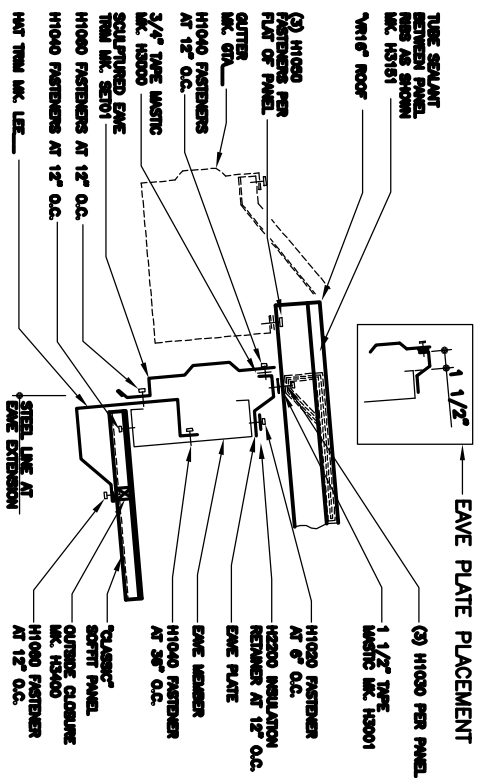
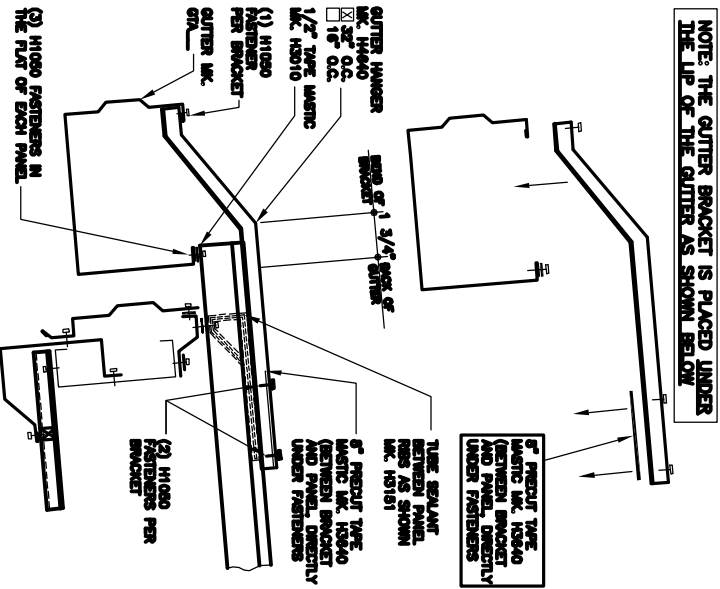


CEILING LINER PANEL LAP DETAIL 1 D12

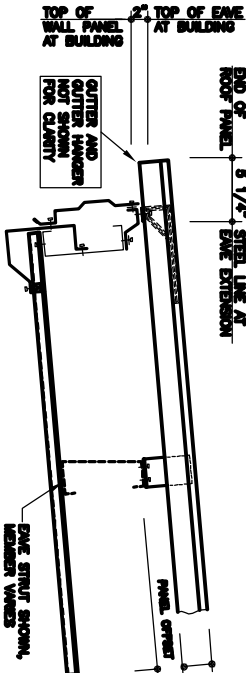
HIGH EAVE CEILING LINER DETAIL 2 D12



AT EAVE EXTENSION STEEL LINE



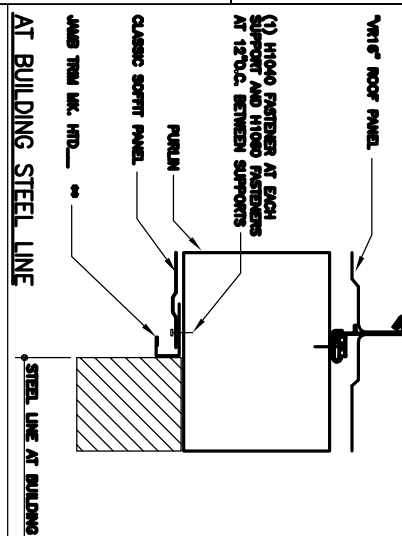
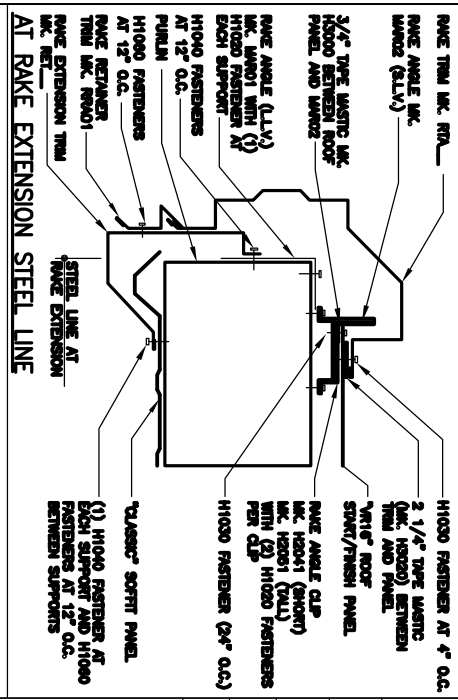
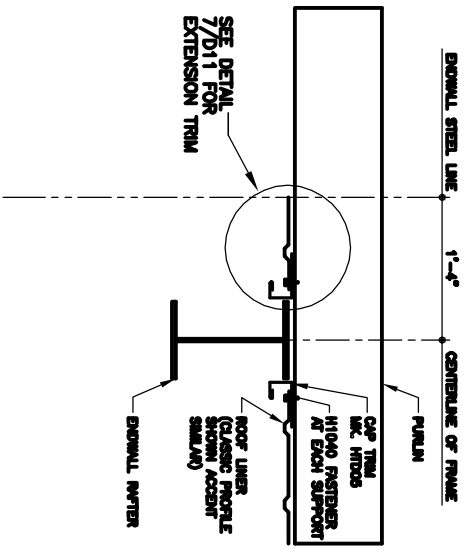
ENLARGED DETAIL AT GUTTER



- 1) SEE THE DETAIL ABOVE FOR EAVE EXTENSION TRIM PART NUMBERS.
- 2) SEE THE DETAIL ABOVE RIGHT FOR GUTTER ASSEMBLY PART NUMBERS.
- 3) SEE DETAIL AT RIGHT FOR TRIM PART NUMBERS AT THE BUILDING STEEL LINE.

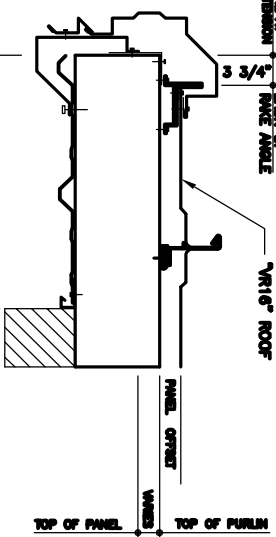
STANDARD EAVE EXTENSION 9 D12

CEILING LINER AT RAKE DETAIL 3 D12



AT BUILDING STEEL LINE

STANDARD RAKE EXTENSION DETAIL 8 D12



DATE	P.E.	ENG.	CHK.	DWN.	ISSUE
11/26/08	ZI	ZI	JR	BW/EV	APPROVAL
01/29/09	ZI	ZI	JR	TJF	REVISED APPROVAL
03/17/09	ZI	ZI	JH	JH	PERMITS FOR APPROVAL
04/08/09				NJS	REVISED APPROVALS

PROJECT NAME:	ASHISH MISHRA
JACKSON, MS	
CUSTOMER:	METAL BUILDERS SUPPLY
PEARL, MS	

JOB NUMBER:	T08H0501A
SHEET NO:	D12 of 14

THIS SEAL PERTAINS ONLY TO THE MATERIALS DESIGNED AND SUPPLIED BY NUCOR BUILDING SYSTEMS. A NUCOR BUILDING SYSTEMS, A DIVISION OF NUCOR CORPORATION, THE DRAWINGS AND THE METAL BUILDING WHICH THEY REPRESENT ARE THE PRODUCT OF NUCOR BUILDING SYSTEMS. ANY UNAUTHORIZED REPRODUCTION OR SEAL APPEARANCE ON THESE DRAWINGS IS PROHIBITED. NUCOR BUILDING SYSTEMS, A DIVISION OF NUCOR CORPORATION, OR REPRESENT THE PROJECT AS ENGINEER OF RECORD AND SHALL NOT BE CONSTRUED AS SUCH.

600 APACHE TRAIL
TERRELL, TX 75160
PHONE: (972) 524-5407
FAX: (972) 524-5417