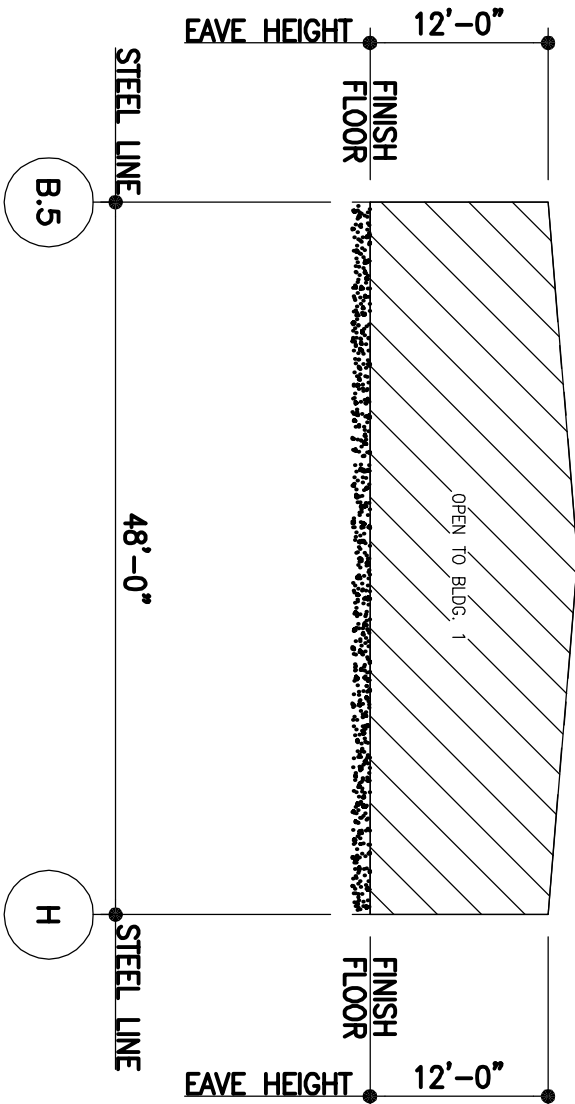
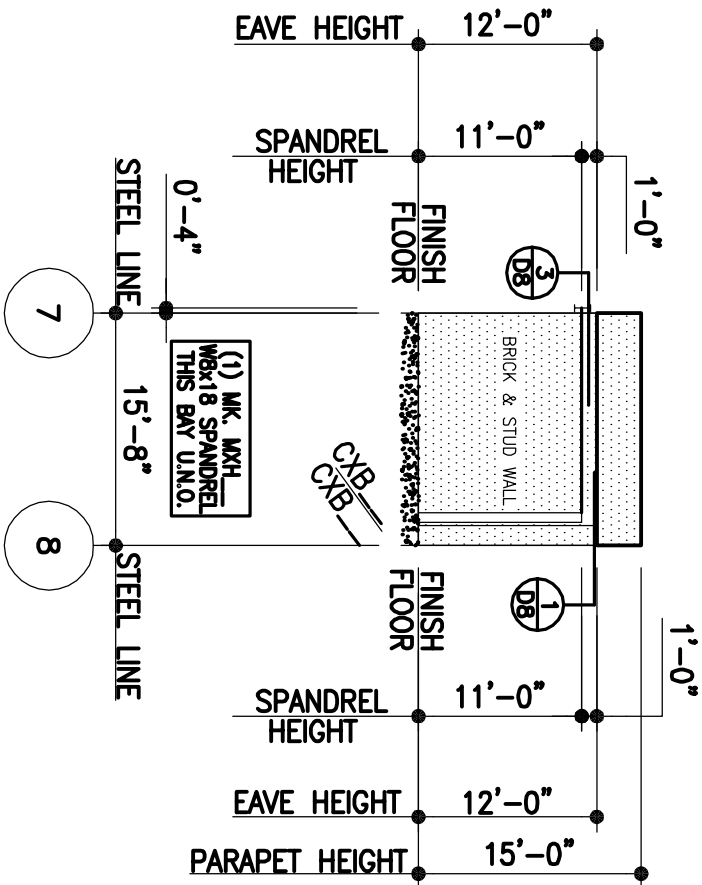


SIDEWALL ELEVATION AT LINE B.5

ENDWALL ELEVATION AT LINE 8

- 1) STUDS TO CANTILEVER AND SUPPORT SELF ABOVE EAVE AT PARAPET
- 2) FOR NESTED PORTAL COLUMN DETAILS SEE 7/D4.

- 1) ● INDICATES (W10x22) WIND COLUMNS. SEE 5/D4 FOR DETAIL.



SIDEWALL ELEVATION AT LINE H

ENDWALL ELEVATION AT LINE 7

- 1) STUDS TO CANTILEVER AND SUPPORT SELF ABOVE EAVE AT PARAPET
- 2) FOR NESTED PORTAL COLUMN DETAILS SEE 7/D4.

FOYER

| DATE | P.E. | ENO | CHK | DWN | ISSUE |
|----------|------|-----|-----|-------|----------------------|
| 11/26/08 | | JZ | JR | BW/EV | APPROVAL |
| 01/29/09 | | JZ | | TJF | REVISED APPROVALS |
| 03/17/09 | | JZ | | JH | PERMITS FOR APPROVAL |
| 04/20/09 | | | | NJS | REVISED APPROVALS |
| | | | | | |
| | | | | | |
| | | | | | |
| | | | | | |

| | |
|---------------|-----------------------|
| PROJECT NAME: | ASHISH MISHRA |
| JACKSON, MS | |
| CUSTOMER: | METAL BUILDERS SUPPLY |
| PEARL, MS | |

| | |
|-------------|-----------|
| JOB NUMBER: | TO8H0501A |
| SHEET NO: | E14 of 31 |

| |
|---|
| THIS SEAL PERTAINS ONLY TO THE MATERIALS DESIGNED AND SUPPLIED BY NUCOR BUILDING SYSTEMS AND NOT TO THE BUILDING OR STRUCTURE. THE DRAWINGS AND REPRESENT THE PRODUCT OF NUCOR BUILDING SYSTEMS. ANY REVISIONS OR CHANGES TO THESE DRAWINGS IS EMPLOYED BY NUCOR BUILDING SYSTEMS AND DOES NOT BE CONSIDERED AS SUCH. |
|---|