

MARK	LEFT COLUMN	RIGHT COLUMN	BRACE	SCREWS EA STUD	BOOT	BOOT TO COLUMN CONNECTION	GRID
SU-1A	(2) 600C150-43	(2) 600C150-43	(2) 4x5-411L STRKRG ELL	4	A	(4) - W/ SCREW	
SU-1B	(2) 600C150-43	(2) 600C150-43	(2) 4x5-411L STRKRG ELL	4	B	(4) - BOLT'S	AB, T
SU-1C	(2) 600C150-43	(2) 600C150-43	(2) 4x5-411L STRKRG ELL	2	B	(4) - BOLT'S	
SU-1D	(2) 600C150-43	(2) 600C150-43	(2) 4x5-411L STRKRG ELL	2	A	(4) - BOLT'S	
SU-1E	(2) 600C150-43	(2) 600C150-43	(2) 4x5-411L STRKRG ELL	4	B	(4) - BOLT'S	C
SU-1F	(2) 600C150-43	(2) 600C150-43	(2) 4x5-411L STRKRG ELL	4	B	(4) - BOLT'S	
SU-1G	(2) 600C150-43	(2) 600C150-43	(2) 4x5-411L STRKRG ELL	2	B	(4) - BOLT'S	
SU-1H	(2) 600C150-43	(2) 600C150-43	(2) 4x5-411L STRKRG ELL	1	A	(4) - W/ SCREW	E
SU-1I	(2) 600C150-43	(2) 600C150-43	(2) 4x5-411L STRKRG ELL	1	B	(4) - BOLT'S	
SU-1J	(2) 600C150-43	(2) 600C150-43	(2) 4x5-411L STRKRG ELL	2	B	(4) - BOLT'S	
SU-1K	(2) 600C150-43	(2) 600C150-43	(2) 4x5-411L STRKRG ELL	4	A	(4) - W/ SCREW	
SU-1L	(2) 600C150-43	(2) 600C150-43	(2) 4x5-411L STRKRG ELL	4	A	(4) - W/ SCREW	
SU-1M	(2) 600C150-43	(2) 600C150-43	(2) 4x5-411L STRKRG ELL	4	A	(4) - W/ SCREW	
SU-1N	(2) 600C150-43	(2) 600C150-43	(2) 4x5-411L STRKRG ELL	4	A	(4) - W/ SCREW	
SU-1O	(2) 600C150-43	(2) 600C150-43	(2) 4x5-411L STRKRG ELL	4	A	(4) - W/ SCREW	
SU-1P	(2) 600C150-43	(2) 600C150-43	(2) 4x5-411L STRKRG ELL	4	A	(4) - W/ SCREW	
SU-1Q	(2) 600C150-43	(2) 600C150-43	(2) 4x5-411L STRKRG ELL	4	A	(4) - W/ SCREW	
SU-1R	(2) 600C150-43	(2) 600C150-43	(2) 4x5-411L STRKRG ELL	4	A	(4) - W/ SCREW	
SU-1S	(2) 600C150-43	(2) 600C150-43	(2) 4x5-411L STRKRG ELL	4	A	(4) - W/ SCREW	
SU-1T	(2) 600C150-43	(2) 600C150-43	(2) 4x5-411L STRKRG ELL	4	A	(4) - W/ SCREW	
SU-1U	(2) 600C150-43	(2) 600C150-43	(2) 4x5-411L STRKRG ELL	4	A	(4) - W/ SCREW	
SU-1V	(2) 600C150-43	(2) 600C150-43	(2) 4x5-411L STRKRG ELL	4	A	(4) - W/ SCREW	
SU-1W	(2) 600C150-43	(2) 600C150-43	(2) 4x5-411L STRKRG ELL	4	A	(4) - W/ SCREW	
SU-1X	(2) 600C150-43	(2) 600C150-43	(2) 4x5-411L STRKRG ELL	4	A	(4) - W/ SCREW	
SU-1Y	(2) 600C150-43	(2) 600C150-43	(2) 4x5-411L STRKRG ELL	4	A	(4) - W/ SCREW	
SU-1Z	(2) 600C150-43	(2) 600C150-43	(2) 4x5-411L STRKRG ELL	4	A	(4) - W/ SCREW	
SU-2A	(2) 600C150-43	(2) 600C150-43	(2) 4x5-411L STRKRG ELL	4	A	(4) - W/ SCREW	
SU-2B	(2) 600C150-43	(2) 600C150-43	(2) 4x5-411L STRKRG ELL	4	A	(4) - W/ SCREW	
SU-2C	(2) 600C150-43	(2) 600C150-43	(2) 4x5-411L STRKRG ELL	4	A	(4) - W/ SCREW	
SU-2D	(2) 600C150-43	(2) 600C150-43	(2) 4x5-411L STRKRG ELL	4	A	(4) - W/ SCREW	
SU-2E	(2) 600C150-43	(2) 600C150-43	(2) 4x5-411L STRKRG ELL	4	A	(4) - W/ SCREW	
SU-2F	(2) 600C150-43	(2) 600C150-43	(2) 4x5-411L STRKRG ELL	4	A	(4) - W/ SCREW	
SU-2G	(2) 600C150-43	(2) 600C150-43	(2) 4x5-411L STRKRG ELL	4	A	(4) - W/ SCREW	
SU-2H	(2) 600C150-43	(2) 600C150-43	(2) 4x5-411L STRKRG ELL	4	A	(4) - W/ SCREW	
SU-2I	(2) 600C150-43	(2) 600C150-43	(2) 4x5-411L STRKRG ELL	4	A	(4) - W/ SCREW	
SU-2J	(2) 600C150-43	(2) 600C150-43	(2) 4x5-411L STRKRG ELL	4	A	(4) - W/ SCREW	
SU-2K	(2) 600C150-43	(2) 600C150-43	(2) 4x5-411L STRKRG ELL	4	A	(4) - W/ SCREW	
SU-2L	(2) 600C150-43	(2) 600C150-43	(2) 4x5-411L STRKRG ELL	4	A	(4) - W/ SCREW	
SU-2M	(2) 600C150-43	(2) 600C150-43	(2) 4x5-411L STRKRG ELL	4	A	(4) - W/ SCREW	
SU-2N	(2) 600C150-43	(2) 600C150-43	(2) 4x5-411L STRKRG ELL	4	A	(4) - W/ SCREW	
SU-2O	(2) 600C150-43	(2) 600C150-43	(2) 4x5-411L STRKRG ELL	4	A	(4) - W/ SCREW	
SU-2P	(2) 600C150-43	(2) 600C150-43	(2) 4x5-411L STRKRG ELL	4	A	(4) - W/ SCREW	
SU-2Q	(2) 600C150-43	(2) 600C150-43	(2) 4x5-411L STRKRG ELL	4	A	(4) - W/ SCREW	
SU-2R	(2) 600C150-43	(2) 600C150-43	(2) 4x5-411L STRKRG ELL	4	A	(4) - W/ SCREW	
SU-2S	(2) 600C150-43	(2) 600C150-43	(2) 4x5-411L STRKRG ELL	4	A	(4) - W/ SCREW	
SU-2T	(2) 600C150-43	(2) 600C150-43	(2) 4x5-411L STRKRG ELL	4	A	(4) - W/ SCREW	
SU-2U	(2) 600C150-43	(2) 600C150-43	(2) 4x5-411L STRKRG ELL	4	A	(4) - W/ SCREW	
SU-2V	(2) 600C150-43	(2) 600C150-43	(2) 4x5-411L STRKRG ELL	4	A	(4) - W/ SCREW	
SU-2W	(2) 600C150-43	(2) 600C150-43	(2) 4x5-411L STRKRG ELL	4	A	(4) - W/ SCREW	
SU-2X	(2) 600C150-43	(2) 600C150-43	(2) 4x5-411L STRKRG ELL	4	A	(4) - W/ SCREW	
SU-2Y	(2) 600C150-43	(2) 600C150-43	(2) 4x5-411L STRKRG ELL	4	A	(4) - W/ SCREW	
SU-2Z	(2) 600C150-43	(2) 600C150-43	(2) 4x5-411L STRKRG ELL	4	A	(4) - W/ SCREW	

BRACE AND LIGHT GAUGE COLUMN SCHEDULE NOTE:

LG COLUMNS:  
 FLATTOP BRIDGING SPACERS • 48"  
 SCREENS AT STRAPS:  
 1/2" DIA. x 2 1/8"  
 AS DETAILED IN THE STEEL NETWORK, INC. LOAD BEARING WALL SYSTEMS' OR ENGINEER APPROVED EQUAL.  
 BOOTS:  
 FLATE HICKERS • 3/4" (UNO)  
 FLATE HICKERS • 3/4" (UNO)  
 WHERE THE BOOT TO COLUMN CONNECTION IS INDICATED AS BOLTS, THE BOLTS SHALL BE 1/2" DIA. A325N.  
 BOOT TO COL. CONN:  
 SHALL BE 1/2" DIA. A325N.  
 WHERE THE BOOT TO COLUMN CONNECTION IS INDICATED AS SCREENS, THE SCREENS SHALL BE 1/2" DIA. A325N.  
 STRAP TRACK:  
 STRAP TRACK IS REQUIRED FOR LG GAUGE (48" H) AND IS PROVIDED TO FIT INSIDE THE SELECTED STANDARD TRACK EXCEPT FOR BOOT WITH A SPACING GREATER THAN OR EQUAL TO 36". WHERE STRAP TRACK IS MADE FROM 1/2" GAUGE (31" H), STEEL PLY 5/8" (31" H) SHALL BE USED INSTEAD OF STRAP TRACK.  
 AS DETAILED IN THE STEEL NETWORK, INC. LOAD BEARING WALL SYSTEMS' OR ENGINEER APPROVED EQUAL.  
 INTERIOR CORNER AT T.O.C. ATTACH TO STUDS IN FIELD OF PANEL AT T.O.C. EXTERIOR CORNER SHALL BE ATTACHED TO STUDS IN FIELD OF PANEL AT T.O.C. EXTERIOR STUDS SHALL BE ATTACHED TO STUDS IN FIELD OF PANEL AT T.O.C. EXTERIOR STUDS WITH 6" SCREENS AT T.O.C. ATTACHED TO STUDS IN FIELD OF PANEL AT T.O.C.

LOCATION	SIZE	SPACING
1ST FLOOR - EXTERIOR	600962-68	16" O.C.
1ST FLOOR - INTERIOR	600962-91	16" O.C.
1ST FLOOR - EXTERIOR	600962-94	16" O.C.
2ND FLOOR - EXTERIOR	600962-94	16" O.C.
2ND FLOOR - INTERIOR	600962-68	16" O.C.
2ND FLOOR - EXTERIOR	600962-43	16" O.C.
3RD FLOOR - EXTERIOR	600962-94	16" O.C.
3RD FLOOR - INTERIOR	600962-43	16" O.C.
4TH FLOOR - EXTERIOR	600962-43	16" O.C.
4TH FLOOR - INTERIOR	600962-43	16" O.C.
4TH FLOOR - EXTERIOR	600962-43	16" O.C.

BEARING WALL STUD SCHEDULE

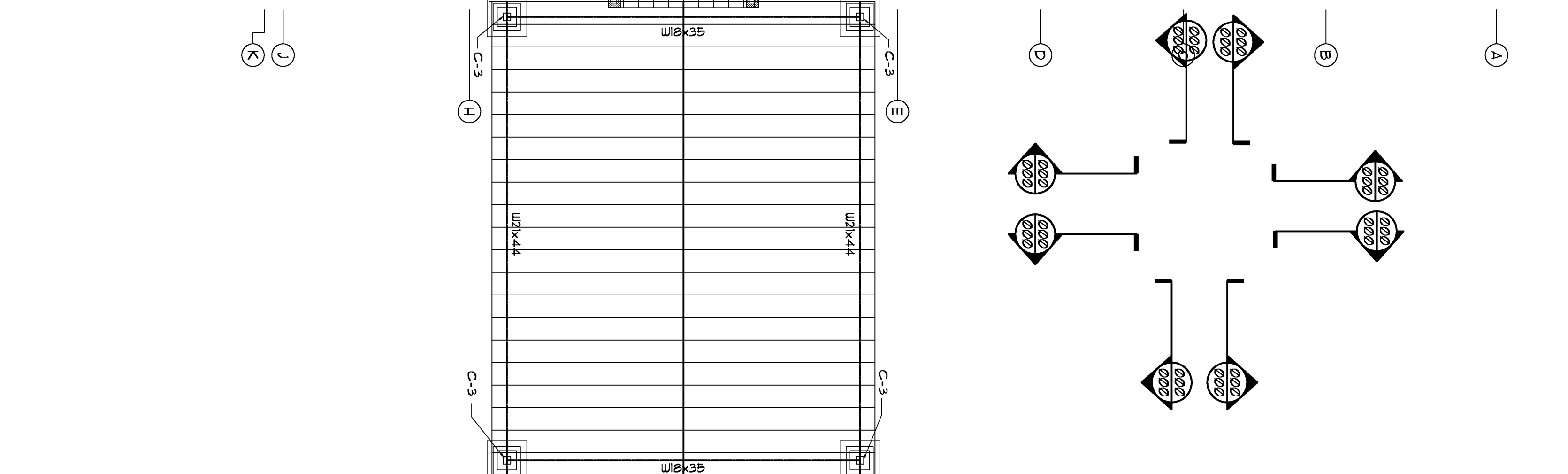
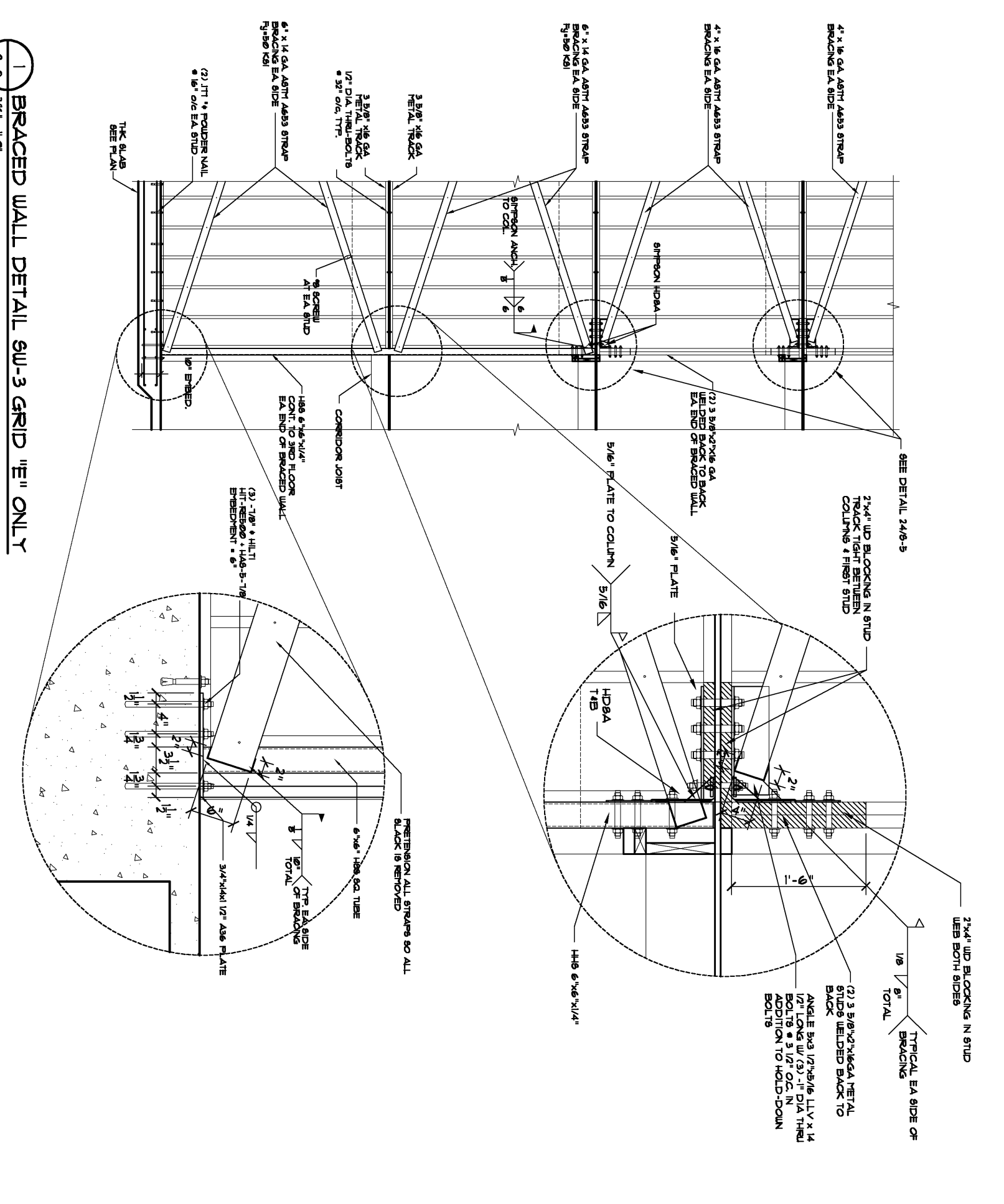
MARK	SIZE	1ST FLOOR KING STUDS	2ND FLOOR KING STUDS	3RD FLOOR KING STUDS	4TH FLOOR KING STUDS	NOTE
H-1	(2) 600962-94 BOXED FILLED W/ INSULATION	(2) 600962-43 BOXED	N/A	N/A	(2) 600962-43 BOXED	
H-2	(2) 600962-43 BOXED FILLED W/ INSULATION	(2) 600962-43 BOXED	N/A	N/A	(2) 600962-43 BOXED	
H-3	(2) 600962-94 BOXED FILLED W/ INSULATION	N/A	(2) 600962-94 BOXED	(2) 600962-43 BOXED	N/A	
H-4	(2) 600962-91 BOXED FILLED W/ INSULATION	N/A	N/A	N/A	N/A	
H-5	(2) 600962-43 BOXED FILLED W/ INSULATION	(2) 600962-43 BOXED	N/A	N/A	N/A	
H-6	(2) 600962-94 BOXED FILLED W/ INSULATION	(2) 600962-43 BOXED	N/A	N/A	N/A	
H-7	8" CPJ BOND BEAM W/ 2 5/8" CONCRETE	N/A	N/A	N/A	N/A	
H-8	(2) 120125K175M4 GA	(2) 600962-94 BOXED	(2) 600962-94 BOXED	(2) 600962-94 BOXED	(2) 600962-43 BOXED	
H-9	(2) 120125K175M4 GA	(2) 600962-94 BOXED	(2) 600962-94 BOXED	(2) 600962-94 BOXED	(2) 600962-43 BOXED	
H-10	(2) 120125K175M4 GA	(2) 600962-94 BOXED	(2) 600962-94 BOXED	(2) 600962-94 BOXED	(2) 600962-43 BOXED	
H-11	(2) 120125K175M4 GA	(2) 600962-94 BOXED	(2) 600962-94 BOXED	(2) 600962-94 BOXED	(2) 600962-43 BOXED	
H-12	(2) 120125K175M4 GA	(2) 600962-94 BOXED	(2) 600962-94 BOXED	(2) 600962-94 BOXED	(2) 600962-43 BOXED	

HEADER SCHEDULE

WALL SHEATHING:  
 ALL EXTERIOR WALL SHEATHING TO BE 5/8" DRYS-GLOSS SHEATHING

WALL STUDS:  
 1) 600962-94 BOXED FOR BEARING WALL STUD SIZE SPACING.  
 2) MATCHED WALL SHEATHING BEARING WALLS

FLOOR SHEATHING:  
 FLOOR DECKING TO BE 600962-94 GA GALVANIZED METAL DECKING WITH GYP-CRTE TOPPING TOTALING 3" INCLUDING DECKING



# SECOND FLOOR FRAMING

SCALE: 1/8" = 1'-0" SHOWING FIRST FLOOR WALLS