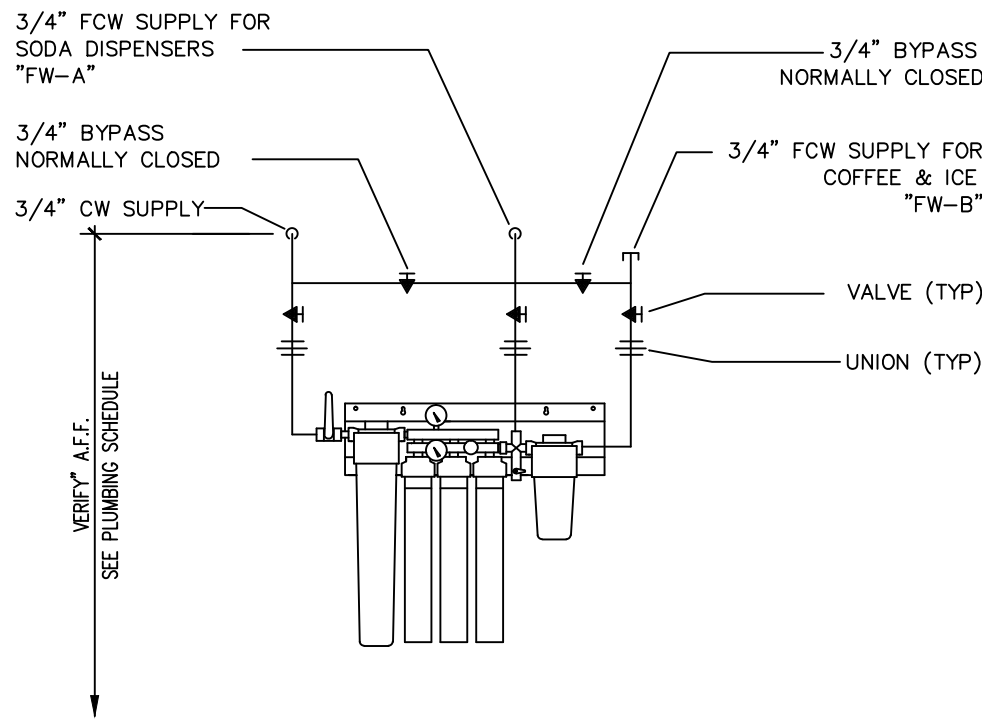
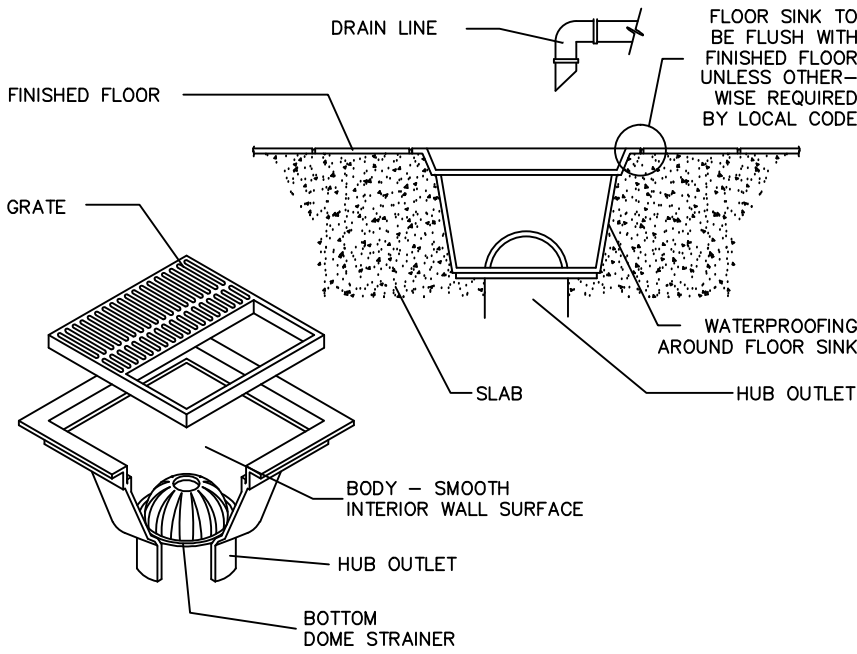


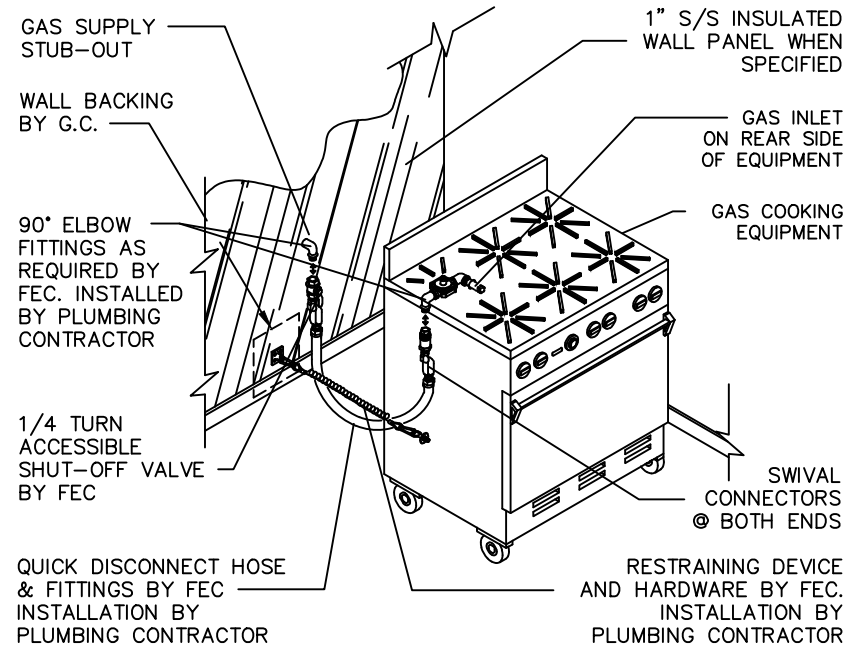
PLUMBING CONNECTIONS SCHEDULE							
NUMBER	SIZE	DESCRIPTION	LOCATION	A.F.F.	SERVICE TO	ITEM NO.	REMARKS
P13	1"	DRAIN TO FLOOR SINK	FLOOR	-	WALK-IN COOLER COIL	K13	P.C. TO BRANCH TO CONNECTION AS REQUIRED
P16	1"	DRAIN TO FLOOR SINK	FLOOR	-	WALK-IN FREEZER COIL	K16	P.C. TO BRANCH TO CONNECTION AS REQUIRED
P31	1/2"	HOT & COLD WATER	WALL	18"	POT SINK	K31	P.C. TO BRANCH TO CONNECTION AS REQUIRED
P31	1 1/2"	DRAIN TO FLOOR SINK	FLOOR	-	POT SINK	K31	P.C. TO BRANCH TO CONNECTION AS REQUIRED
P33	1/2"	HOT & COLD WATER	WALL	18"	PRE-RINSE ASSEMBLY	K33	P.C. TO BRANCH TO CONNECTION AS REQUIRED
P33	1 1/2"	DRAIN	WALL	12"	PRE-RINSE ASSEMBLY	K33	P.C. TO BRANCH TO CONNECTION AS REQUIRED
P34	1/2"	COLD WATER	WALL	18"	DISPOSAL	K34	P.C. TO BRANCH TO CONNECTION AS REQUIRED
P34	2"	DRAIN	WALL	9"	DISPOSAL	K34	P.C. TO BRANCH TO CONNECTION AS REQUIRED
P35A	1/2"	COLD WATER	WALL	62"	DISHMACHINE (VENTLESS)	K35A	P.C. TO BRANCH TO CONNECTION AS REQUIRED
P35B	1/2"	110° HOT WATER	WALL	42"	DISHMACHINE (VENTLESS)	K35B	P.C. TO BRANCH TO CONNECTION AS REQUIRED
P35C	1-1/2"	DRAIN TO FLOOR SINK	FLOOR	-	DISHMACHINE (VENTLESS)	K35C	P.C. TO BRANCH TO CONNECTION AS REQUIRED
P61	1/2"	HOT & COLD WATER	WALL		TABLE W/SINK	K61	P.C. TO BRANCH TO CONNECTION AS REQUIRED
P61	1 1/2"	DRAIN TO FLOOR SINK	FLOOR		TABLE W/SINK	K61	P.C. TO BRANCH TO CONNECTION AS REQUIRED
P64	1/2"	HOT & COLD WATER	WALL	24"	CABINET BASE W/SINK	K65	P.C. TO BRANCH TO CONNECTION AS REQUIRED
P64	1 1/2"	DRAIN TO FLOOR SINK	FLOOR	-	CABINET BASE W/SINK	K65	P.C. TO BRANCH TO CONNECTION AS REQUIRED
P101	1/2"	COLD WATER (RUN THRU FILTER)	WALL	50"	ICE MACHINE	K101	P.C. TO BRANCH TO CONNECTION AS REQUIRED
P101	1/2"	DRAIN TO FLOOR SINK	FLOOR	-	ICE MACHINE	K101	P.C. TO BRANCH TO CONNECTION AS REQUIRED
P104	1/2"	COLD WATER	WALL	24"	DROP-IN ICE & WATER UNIT.	K104	P.C. TO BRANCH TO CONNECTION AS REQUIRED
P104	1"	DRAIN TO FLOOR SINK	FLOOR	-	DROP-IN ICE & WATER UNIT	K104	P.C. TO BRANCH TO CONNECTION AS REQUIRED
P109	1/2"	COLD WATER (RUN THRU FILTER)	WALL	50"	AIR POT COFFEE BREWER	K109	P.C. TO BRANCH TO CONNECTION AS REQUIRED
P123	1/2"	HOT & COLD WATER	WALL	18"	HAND SINK	K123	P.C. TO BRANCH TO CONNECTION AS REQUIRED
P123	1 1/2"	DRAIN	WALL	12"	HAND SINK	K123	P.C. TO BRANCH TO CONNECTION AS REQUIRED
P204	1/2"	COLD WATER		50"	STARBUCKS ESPRESSO UNIT	K204	P.C. TO BRANCH TO CONNECTION AS REQUIRED
P204	1"	DRAIN TO FLOOR DRAIN			STARBUCKS ESPRESSO UNIT	K204	P.C. TO BRANCH TO CONNECTION AS REQUIRED
P222	1/2"	HOT & COLD WATER	FLOOR	2"	UNDERBAR SINK	S222	P.C. TO BRANCH TO CONNECTION AS REQUIRED
P222	1 1/2"	DRAIN TO FLOOR SINK	FLOOR	-	UNDERBAR SINK	S222	P.C. TO BRANCH TO CONNECTION AS REQUIRED
P224	1/2"	HOT & COLD WATER	FLOOR	2"	BLENDER STATION W/SINK	S224	P.C. TO BRANCH TO CONNECTION AS REQUIRED
P224	1 1/2"	DRAIN TO FLOOR SINK	FLOOR	-	BLENDER STATION W/SINK	S224	P.C. TO BRANCH TO CONNECTION AS REQUIRED
P226	1"	DRAIN TO FLOOR SINK	FLOOR	-	COCKTAIL STATION	S226	P.C. TO BRANCH TO CONNECTION AS REQUIRED
PMOP	1/2"	HOT & COLD WATER	WALL	18"	MOP SINK	KMOP	P.C. TO BRANCH TO CONNECTION AS REQUIRED
PMOP	2"	DRAIN	FLOOR	2"	MOP SINK	KMOP	P.C. TO BRANCH TO CONNECTION AS REQUIRED
		VENDING					
P551	1/2"	COLD WATER	WALL	60"	ICE MACHINES	V551	P.C. TO BRANCH TO CONNECTION AS REQUIRED
P551	1"	DRAIN	FLOOR		ICE MACHINES	V551	P.C. TO BRANCH TO CONNECTION AS REQUIRED



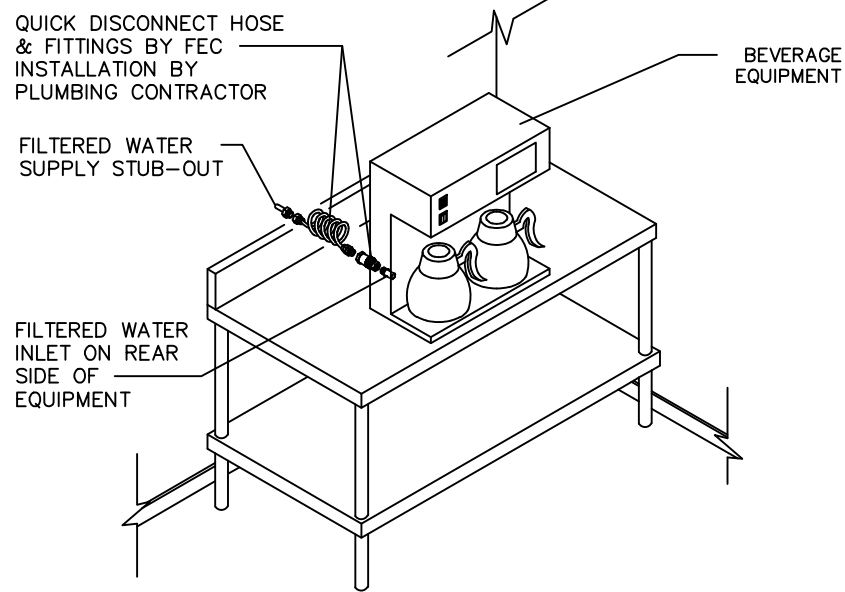
WATER FILTER DETAIL
NOT TO SCALE



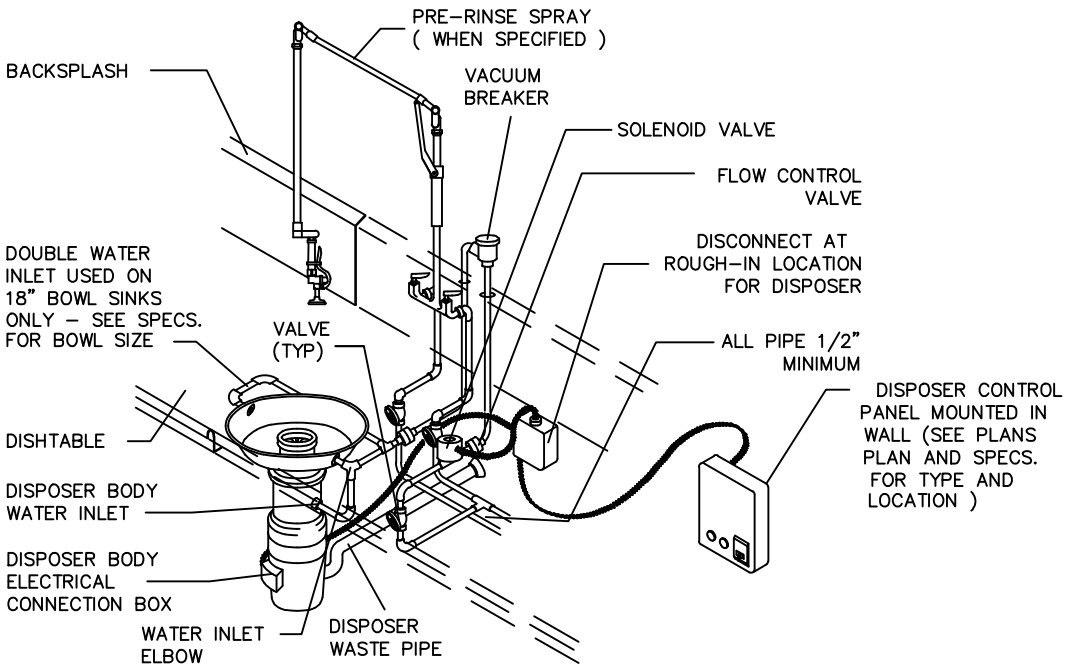
FLOOR SINK DETAIL
NOT TO SCALE



FLEXIBLE GAS LINE DETAIL
NOT TO SCALE



FLEXIBLE WATER LINE DETAIL
NOT TO SCALE



DISPOSER DETAIL
NOT TO SCALE

GAS REQUIREMENTS							
NUMBER	SIZE	DESCRIPTION	LOCATION	A.F.F.	SERVICE TO	ITEM NO.	REMARKS
G89	3/4"	(1) GAS @ 55,000 BTU	WALL	18"	CONVECTION OVEN	K89	P.C. TO BRANCH TO CONNECTION AS REQUIRED/PROVIDE QUICK DISCONNECT
G90	3/4"	(1) GAS @ 15,000 BTU	WALL	18"	CHAR BROILER	K90	P.C. TO BRANCH TO CONNECTION AS REQUIRED/PROVIDE QUICK DISCONNECT
G79	3/4"	(1) GAS @ 55,000 BTU	WALL	18"	GRIDDLE	K79	P.C. TO BRANCH TO CONNECTION AS REQUIRED/PROVIDE QUICK DISCONNECT
G85	3/4"	(1) GAS @ 140,000 BTU	WALL	18"	(4) BURNER RANGE	K85	P.C. TO BRANCH TO CONNECTION AS REQUIRED/PROVIDE QUICK DISCONNECT
G82	1/2"	(1) GAS @ 90,000 BTU	WALL	18"	FRYER	K82	P.C. TO BRANCH TO CONNECTION AS REQUIRED/PROVIDE QUICK DISCONNECT

PLUMBING SYMBOLS			
COLD WATER	CW	○	
HOT WATER	HW	●	
COOLING TOWER WATER	CTW	●	
COOLING TOWER WATER RETURN	CTWR	●	
DRAIN	D	⊙	
INDIRECT WASTE	IW	○	
HUB DRAIN/AIR GAP DRAIN	HD/AGD	○	
FLOOR DRAIN	FD	⊗	
FUNNEL-TYPE FLOOR DRAIN	FFD	⊗	
FLOOR SINK -1/2 GRATE	FS	⊞	
STEAM SUPPLY	SS	⊙	
CONDENSATE RETURN	CR	⊙	
GAS SUPPLY	G	⊙	
POINT OF CONNECTION ON EQUIPMENT			⊙

PLUMBING NOTES

(IF APPLICABLE)
ALL DIMENSIONS SHOWN ARE FROM FINISHED WALLS, FLOORS, CEILINGS AND/OR FROM CENTERLINE OF STRUCTURAL COLUMNS. DIMENSIONS ARE TO BE VERIFIED BY THE KITCHEN EQUIPMENT CONTRACTOR AND ALL TRADES UTILIZING THESE PLANS.

ANY "HOLD" DIMENSIONS ARE CLEAR "FINISH-TO-FINISH" UNLESS OTHERWISE NOTED.

UTILITIES SHOWN ARE FOR ITEMS OF FOODSERVICE EQUIPMENT ONLY AND ARE THE MINIMUM REQUIRED TO OPERATE EQUIPMENT. LOCATIONS OF ANY ADDITIONAL PLUMBING UTILITIES WHICH MAY BE REQUIRED SHALL BE DETERMINED BY THE ARCHITECT/ENGINEER.

PLUMBING PLAN SHOWS OUTLET AND CONNECTION LOCATIONS WITH CAPACITIES. FOR ACTUAL ROUGH-IN LOCATIONS, REFER TO DIMENSIONED DRAWINGS FURNISHED BY KITCHEN EQUIPMENT CONTRACTOR.

FINAL PLUMBING CONNECTIONS INCLUDING MOUNTING OF DRAINS, FAUCETS AND PIPING FROM POINT-OF-CONNECTION ON EQUIPMENT TO BUILDING PLUMBING SYSTEM AND INTERCONNECTIONS BETWEEN EQUIPMENT COMPONENTS SHALL BE PROVIDED BY PLUMBING CONTRACTOR.

PLUMBING CONTRACTOR SHALL PROVIDE FINAL INTERCONNECTION BETWEEN EQUIPMENT AND UTILITY DISTRIBUTION SYSTEM. QUICK DISCONNECT HOSES SHALL BE FURNISHED LOOSE BY THE KITCHEN EQUIPMENT CONTRACTOR.

ALL PLUMBING MATERIALS, INCLUDING PIPE, TRAPS, STOPS, VALVES, FITTINGS, SHUT-OFFS, WATER HAMMER ARRESTORS, PRESSURE REDUCING VALVES, GAUGES, UNIONS AND INSULATION SHALL BE PROVIDED BY PLUMBING CONTRACTOR.

PLUMBING CONTRACTOR SHALL INSTALL ALL FAUCETS AND PLUMBING ACCESSORIES PROVIDED LOOSE BY KITCHEN EQUIPMENT CONTRACTOR.

UTILITIES (GAS, WATER, STEAM) SHALL BE CONCEALED IN WALLS AND STUBBED-OUT OF FINISHED WALLS 6" PIPING STUBBED OUT OF THE FLOOR OR WALL AND RUN EXPOSED SHALL NOT BE ACCEPTABLE AND IS IN VIOLATION OF HEALTH DEPARTMENT CODES. ALL PENETRATIONS SHALL BE SEALED IN WATER TIGHT.

ALL EXPOSED PIPING SHALL BE CHROME PLATED TO SATISFY LOCAL HEALTH DEPARTMENT.

PLUMBING COMPONENTS, PROVIDED BY PLUMBING CONTRACTOR INCLUDING VALVES, TRAPS, SHUT-OFFS, GAUGES AND CONNECTIONS SHALL NOT INTERFERE IN ANY WAY WITH THE OPERATION OF ITEMS OF FOODSERVICE EQUIPMENT.

WATER PRESSURE IN EQUIPMENT AREA SHOULD NOT EXCEED 50 PSI IN BOTH HOT AND COLD WATER SUPPLY LINES. THE WATER PRESSURE TO DISHWASHERS, GLASSWASHERS AND BOOSTER HEATERS SHOULD NOT EXCEED 25 PSI. PRESSURE REDUCING VALVES PROVIDED BY PLUMBING CONTRACTOR MUST MEET EQUIPMENT MANUFACTURER'S FLOW RECOMMENDATIONS.

FLOOR SINKS SHALL BE INSTALLED FLUSH WITH FINISHED FLOOR WITH OR WITHOUT GRATE COVER AS INDICATED ON PLAN.

ALL LINES SHALL BE FLUSHED FREE OF FOREIGN MATTER AND LINE STRAINERS AND FAUCET AERATORS CLEANED PRIOR TO MAKE-UP OF FINAL UTILITY CONNECTIONS BY PLUMBING CONTRACTOR.

GREASE TRAPS SHALL BE PROVIDED BY PLUMBING CONTRACTOR AND SHALL BE RECESS-MOUNTED, FLUSH WITH TOP OF FINISHED FLOOR. GREASE TRAPS SHALL NOT BE LOCATED BENEATH ANY ITEM OF FOODSERVICE EQUIPMENT AND THE REMOVAL OF COVER SHALL NOT INTERFERE WITH THE OPERATION OF ANY FOODSERVICE EQUIPMENT ITEMS.

ALL DRAIN LINES FOR DISPOSERS SHALL BY-PASS GREASE TRAPS.

HOT WATER TEMPERATURE TO BOOSTER HEATER, DISHWACHINE AND GLASSWASHER MUST BE 140°Fahrenheit. HOT WATER LINE FROM BOOSTER HEATER TO GLASSWASHER/ DISHWASHER SHALL BE PROVIDED WITH WATER HAMMER ARRESTOR (ASSE-1010 STD) AT CONNECTION TO DISHWASHER AND SHALL BE PROVIDED BY PLUMBING CONTRACTOR.

DRAIN LINES FROM EVAPORATOR COILS (QUICK-FALL TYPE) SHALL BE TRAPPED OUTSIDE OF WALK-IN FREEZER/COOLER ASSEMBLIES AND EXTENDED OVER BUILDING DRAIN BY PLUMBING CONTRACTOR. ALL PENETRATIONS IN WALK-IN FREEZER/COOLER ASSEMBLIES SHALL BE MADE BY KITCHEN EQUIPMENT CONTRACTOR. REFER TO EVAPORATOR COIL DETAIL.

TRENCH-TYPE DRAIN TROUGH SHALL BE FURNISHED BY THE KITCHEN EQUIPMENT CONTRACTOR TO THE GENERAL CONTRACTOR FOR INSTALLATION. PLUMBING CONTRACTOR SHALL PROVIDE DRAIN CONNECTIONS AS SHOWN ON DETAILS.

GAS MAIN SHALL BE PROVIDED WITH A READILY ACCESSIBLE MANUAL SHUT-OFF VALVE BY PLUMBING CONTRACTOR. LOCATION OF VALVE TO BE COORDINATED WITH FOOD-SERVICE CONSULTANT. A LOOPED GAS SERVICE IS RECOMMENDED TO PROVIDE FOR BALANCED FUEL DISTRIBUTION. SIZE OF GAS LINE TO BE DETERMINED BY ARCHITECT/ENGINEER. SEE PLUMBING SCHEDULE FOR BTU/HOUR REQUIREMENTS.

PLUMBING CONTRACTOR SHALL PROVIDE MANUAL GAS SHUT-OFF DEVICES AT EACH INDIVIDUAL PIECE OF EQUIPMENT NOT BATTERED TOGETHER. LOCATION OF FUEL SHUT-OFF VALVES TO BE COORDINATED WITH FOODSERVICE CONSULTANT. GAS PRESSURE REDUCING VALVES REQUIRED FOR EACH INDIVIDUAL PIECE OF COOKING EQUIPMENT SHALL BE FURNISHED BY KITCHEN EQUIPMENT CONTRACTOR FOR INSTALLATION BY PLUMBING CONTRACTOR.

FOR VENTILATION FIRE SUPPRESSION SYSTEM WITH GAS HEATED COOKING EQUIPMENT, PLUMBING CONTRACTOR SHALL INSTALL MECHANICAL FUEL SHUT-OFF VALVE FURNISHED BY KITCHEN EQUIPMENT CONTRACTOR IN GAS LINES SERVING COOKING EQUIPMENT. LOCATION OF FUEL SHUT-OFF VALVES TO BE COORDINATED WITH FOODSERVICE CONSULTANT. KITCHEN EQUIPMENT CONTRACTOR SHALL PROVIDE REMOTE MANUAL PULL STATION, AND MICRO-SWITCH, GAS SHUT-OFF VALVE, SHALL BE MECHANICALLY ACTIVATED IN CASE OF FIRE BY MECHANICAL/PNEUMATIC MECHANISM. ANY AND ALL ELECTRICAL INTERCONNECTING REQUIRED FOR FAN CONTROL AND/OR ALARM SYSTEMS SHALL BE BY ELECTRICAL CONTRACTOR.

DISPOSER AND/OR WASTE PULPER DRAIN LINES SHALL BE PROVIDED WITH ADEQUATE CLEANOUT FITTINGS.

INTERPIPING BETWEEN DISPOSER SOLENOID VALVE, DISPOSER AND TROUGH AND/OR SINK INLETS SHALL BE PROVIDED BY PLUMBING CONTRACTOR. SEE DETAILS FOR ADDITIONAL INFORMATION.

PLUMBING CONTRACTOR SHALL FURNISH AND INSTALL ALL BELOW GRADE 6" BEVERAGE CONDUITS AS INDICATED WITH 24" MINIMUM SWEEPING BENDS. CUT OFF CONDUIT 6" A.F.F. AND CAP OFF CONDUIT MUST BE WATER TIGHT AND MATERIAL MUST MEET ALL LOCAL AND STATE CODES.

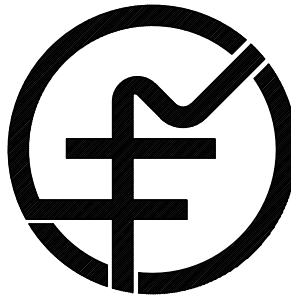
PLUMBING SCHEDULE SHEET

NOT TO SCALE

REVISIONS	BY
07-29-11	MGM
09-22-11	MGM
10-04-11	MGM

COURTYARD by MARRIOTT
Pearl, Mississippi

Hotel & Restaurant Supply
Suppliers/Designer's to the Food Service Industry
3057 Winchester Road • Memphis, Tennessee 38118
901-368-0033 • 877-480-8273 • FAX 901-368-0061



DRAWN MCCALL
DATE 04-18-11
DOCUMENT DATE
SCALE 1/4"=1'-0"
JOB NO.
FILE NAME
SHEET

FS-4