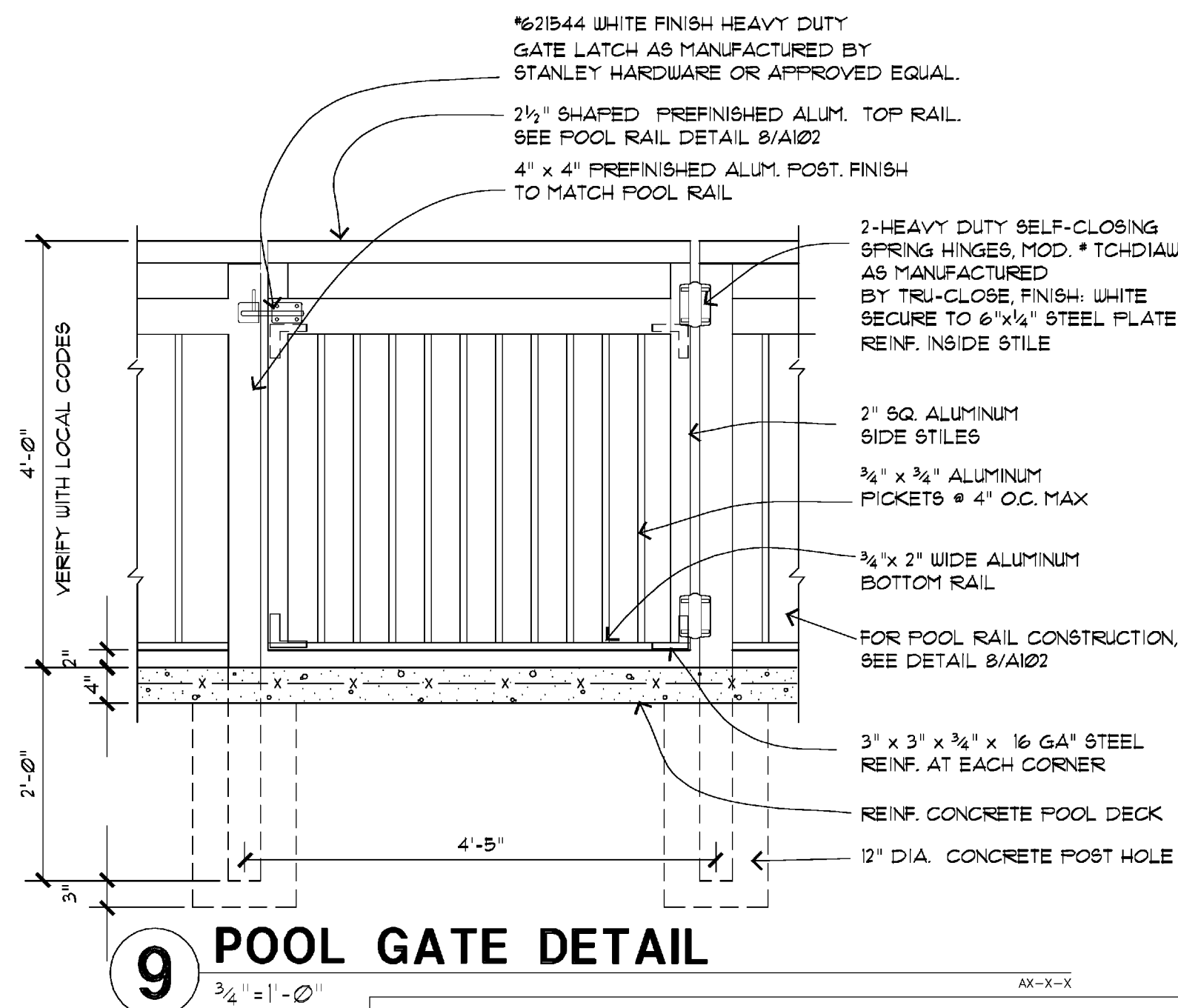


FIRE PIT NOTES

1. CONTRACTOR TO HIRE DESIGN CONSULTANT TO PROVIDE DESIGN OF BURNER ASSEMBLY AND FIRE PIT.
2. CONTRACTOR SHALL OBTAIN DESIGN APPROVAL FROM THE FIRE PIT WITHIN THE LOCAL AUTHORITY HAVING JURISDICTION (BOTH BUILDING OFFICE AND FIRE MARSHALL) PRIOR TO CONSTRUCTION OF FIRE PIT.
3. NO FIREPITS SHOULD BE LOCATED UNDER THE OVERHANGS OF ANY STRUCTURE. ALL GRASS, TREES AND VEGETATION SHOULD BE CLEARED AWAY FROM FIREPITS, SO THAT THEY DO NOT HANG OVER THEM.
4. FIREPITS SHALL BE NO CLOSER THAN 10 FEET FROM ANY STRUCTURE.
5. FIREPITS SHALL BE LAYED OUT ALONG A LINE RUN TO THE FIREPIT WITH AN EMERGENCY SHUT OFF SWITCH WHICH RUNS A FLAME NO MORE THAN 500000 BTU'S.
6. GAS VALVES AND IGNITION SWITCHES MUST BE LOCATED BEHIND A DOOR PANEL WITH LOCK. IGNITION SWITCHES SHOULD BE LOCATED SUCH THAT WHEN THEY ARE TURNED ON HAS A FULL VIEW OF THE FIREPIT AND THE FIREPIT AREA.
7. GAS BURNER DESIGN SHALL BE SUCH THAT "MANUALLY SHUT OFF" IS EASILY ACCESSIBLE BY AUTHORIZED EMPLOYEES. DESIGN OF BURNER SHALL BE "FAIL SAFE" SUCH THAT GAS SUPPLY SHUTS OFF IN CASE OF "FLAME OUT".
8. SEE DETAILING 17/54 FOR WARNING SIGNALS. WARNING SIGNALS MAY BE ETCHED INTO STONE SURFACES.
9. CONTRACTOR TO SELECT FINAL FIREPIT AND FIREPIT AREA FINISHES. BASIS OF DESIGN IS AS FOLLOWS:
 - a. FIELD PAVERS: 4X6 PAVERS;
 - b. EAGLE BAY PAVERS: JAMES RIVER PAVING
 - c. ACCENT PAVERS: 4X8 PAVERS;
 - d. EAGLE BAY USA - SLATE
 - e. FIRE PIT STRUCTURE: EAGLE BAY USA - 6" HIGH HIGHLAND STONE - FREESTANDING - JAMES RIVER PAVING
 - f. FIRE PIT: EAGLE BAY USA - XL HIGHLAND OUT RADIAL CAP - JAMES RIVER PAVING
 - g. FIRE PIT MITER: LAVA ROCK

CRITERIA NOTES

- △ SIGN: "NOTICE: DO NOT LEAVE CHILDREN UNATTENDED." CONTRACTOR TO REFERENCE MARRIOTT SIGNAGE STANDARDS FOR SIGNAGE INFORMATION.
- △ SIGN AT EMERGENCY SHUT OFF LOCATION: "NOTICE: EMERGENCY SHUT OFF."



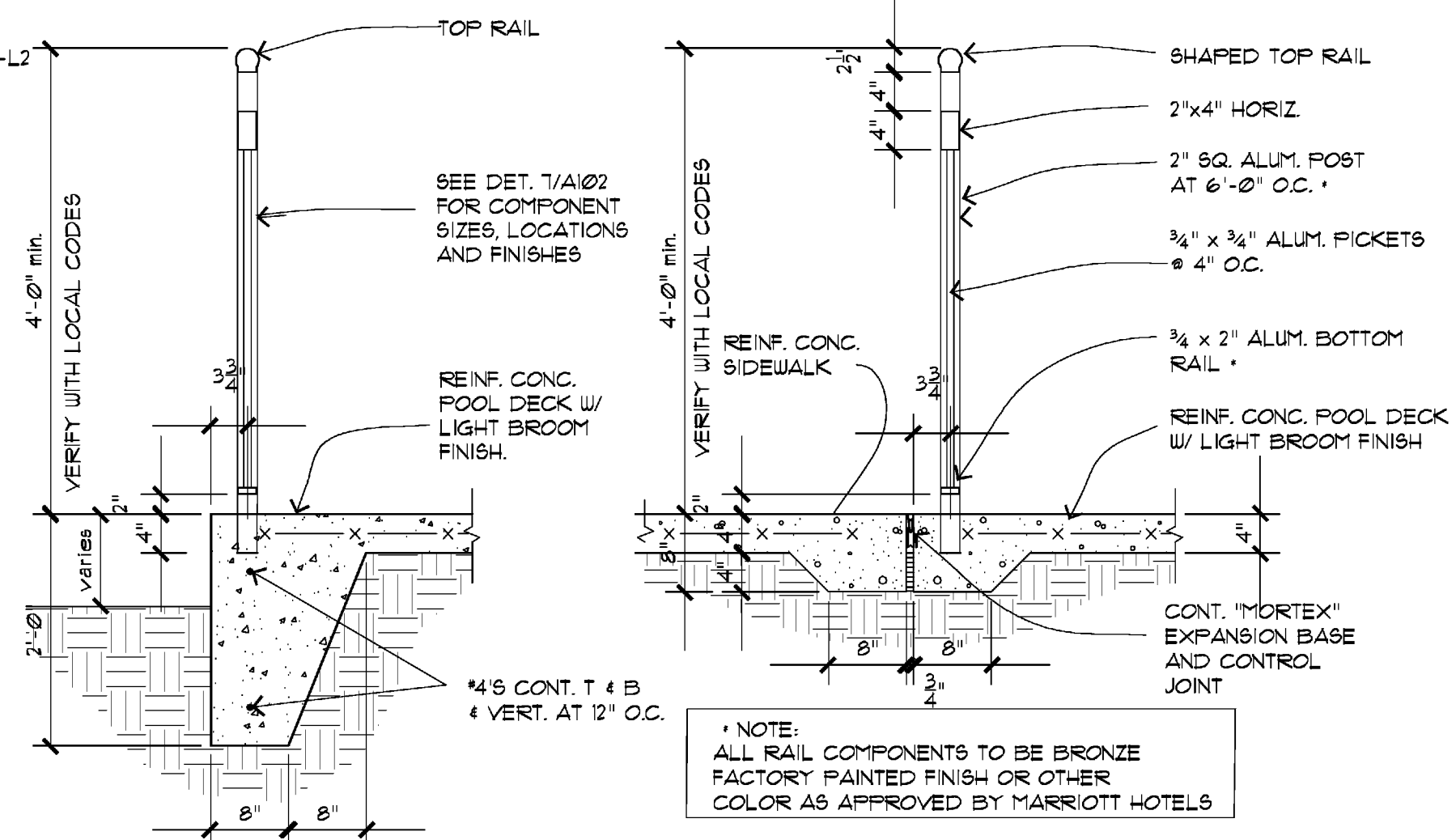
9 POOL GATE DETAIL

RAILING FINISH

Fluoropolymer Coating Full-strength 70 % Kynar 500® coating baked-on for 15 minutes at 450°F (232°C) in a dry film thickness of 10 mils, 30% reflective gloss (ASTM D 523), over 0.3 mil epoxy primer.

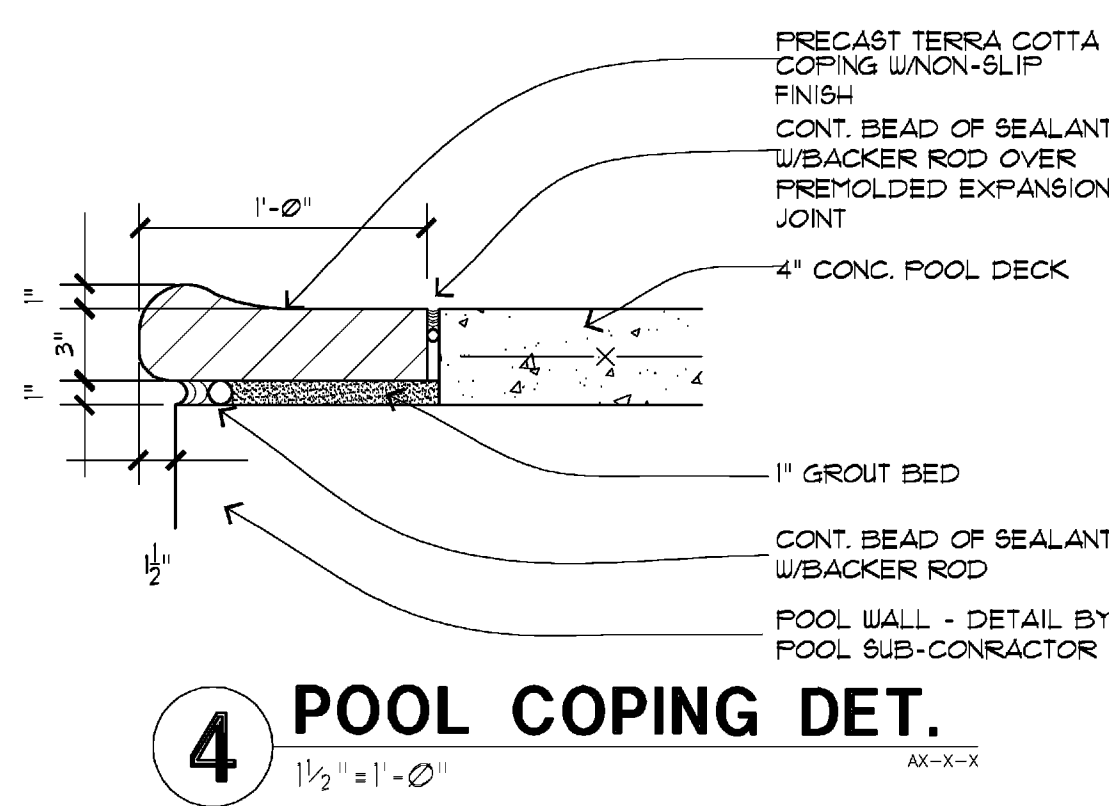
Durability: Provide coating which has been field tested under normal range of weathering conditions for minimum of 20 years without significant peel, blister, flake, chip, crack or check in finish, and without chalking in excess of 5 (ASTM D 653), and without fading in excess of 5 NBS units.

Owner shall choose one color from complete list of manufacturer's standard colors.

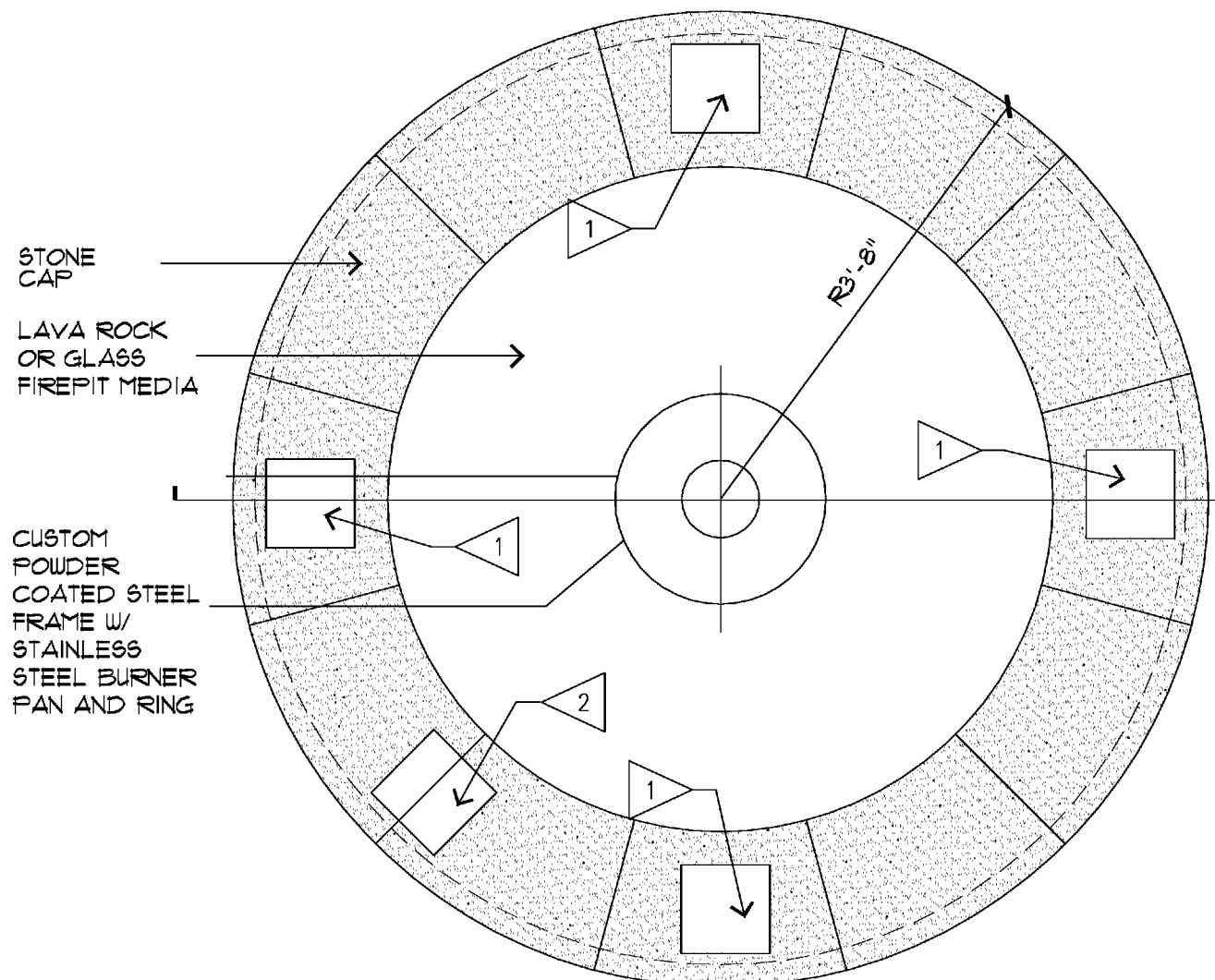


o POOL RAIL DETAIL

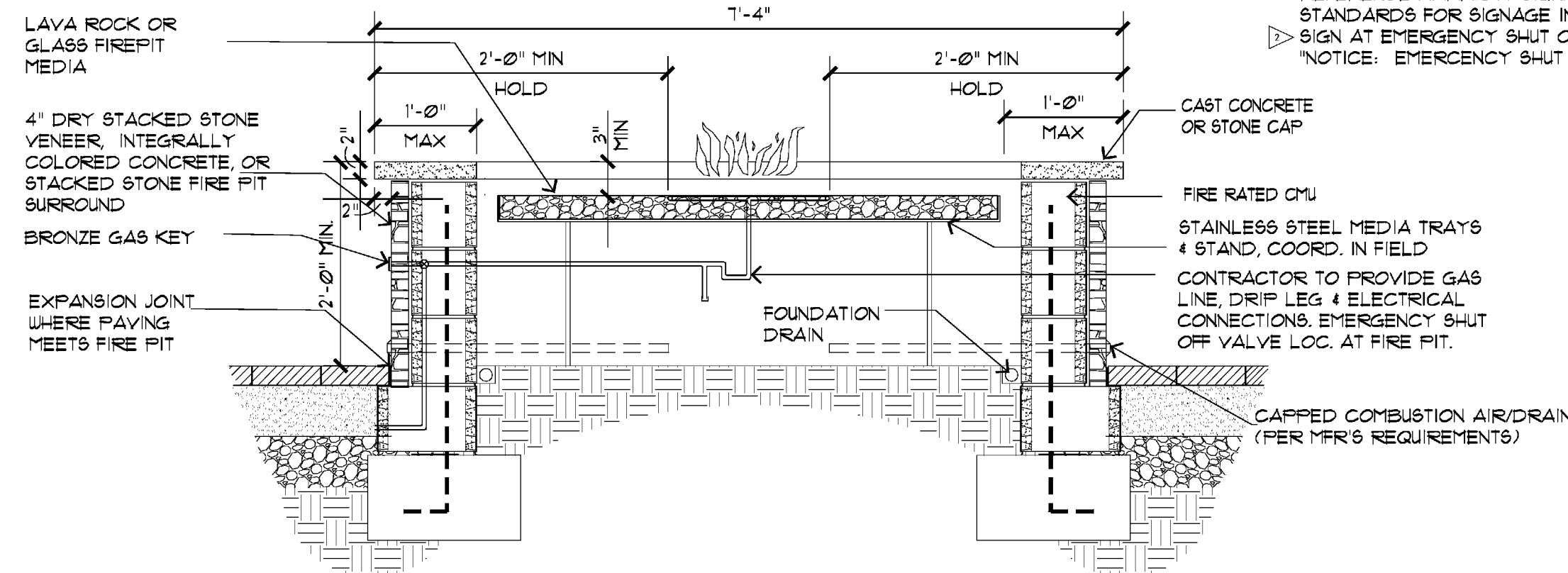
7 POOL RAIL DETAIL



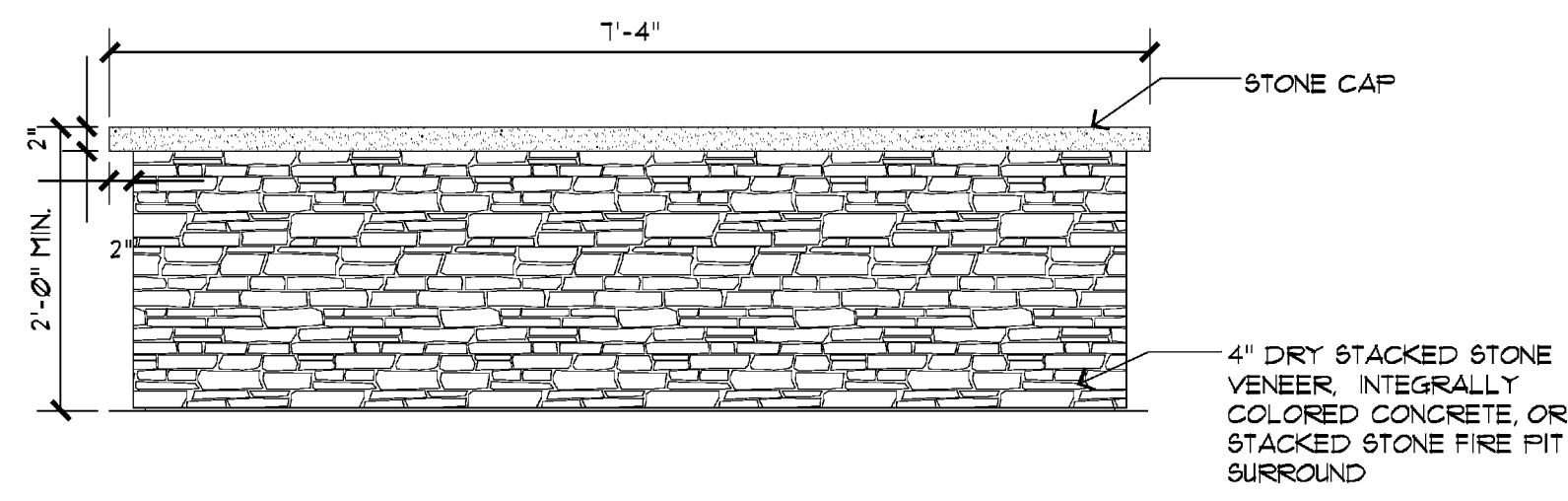
POOL COPING DET.



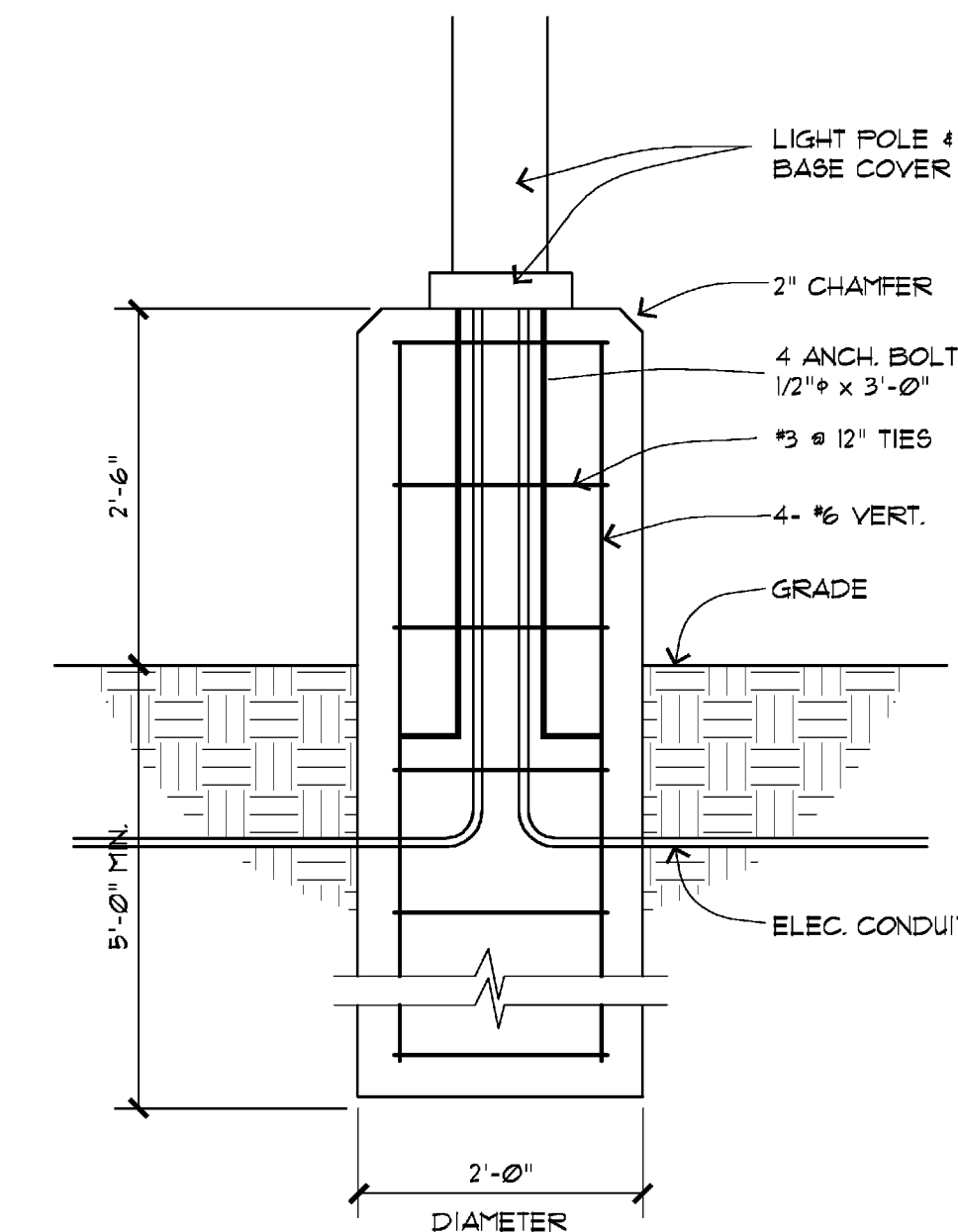
2 FIRE PIT PLAN



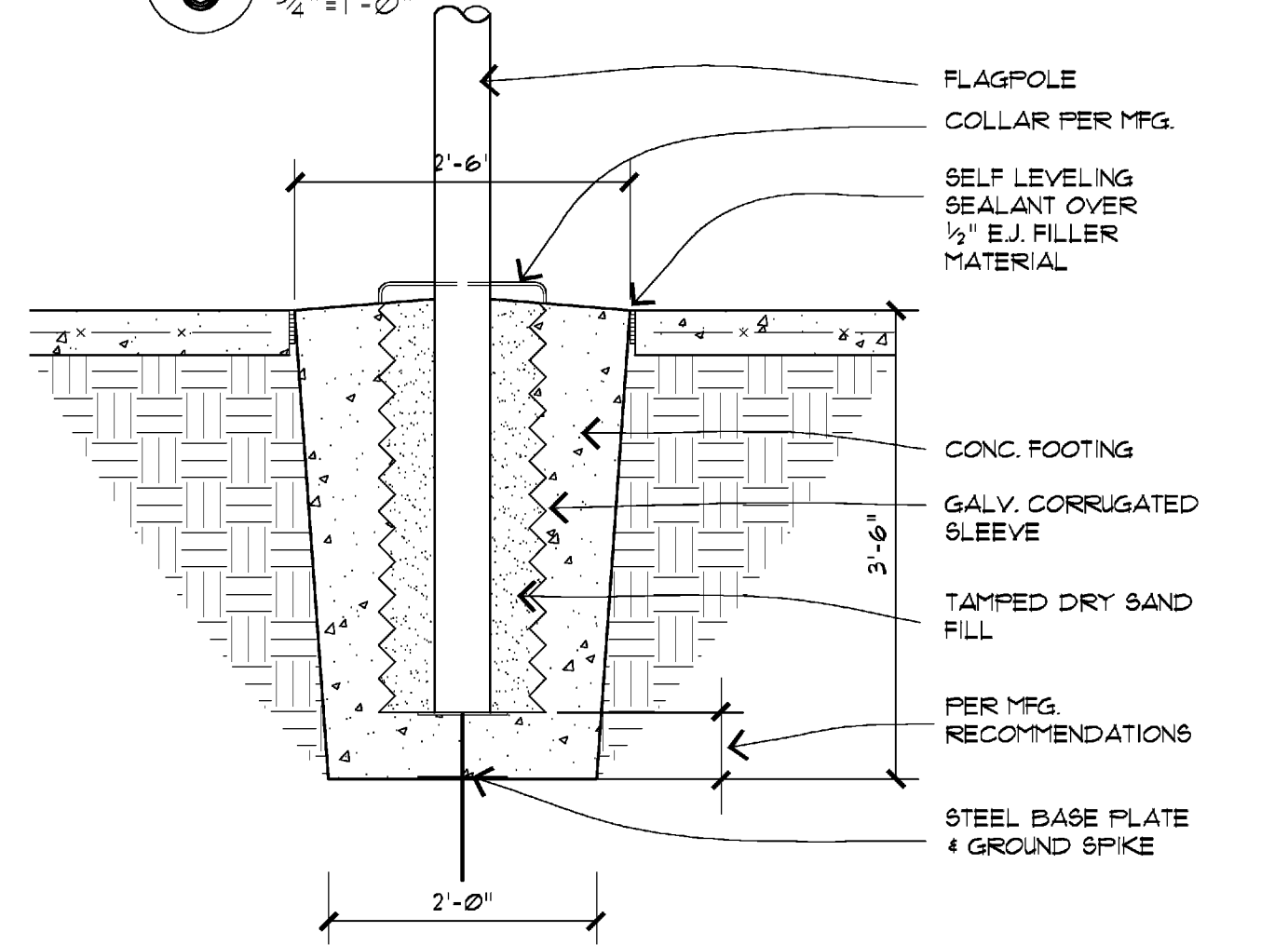
2 FIRE PIT SECTION



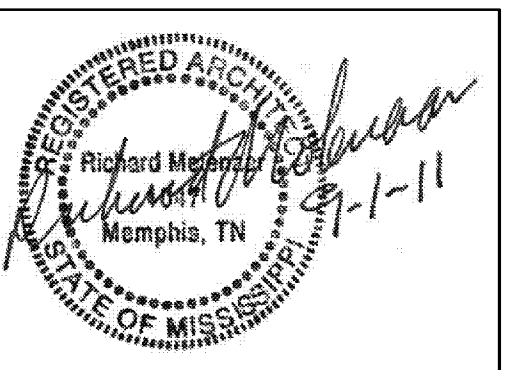
1 FIRE PIT ELEVATION



6 LIGHT POLE BASE



5 FLAGPOLE DETAIL



PROJECT NAME:



Riverwind Drive Pearl, Mississippi

Site Details

PROJECT NO.
9018

TEST REVISION:

DRAWN BY: CI

CHECKED BY:

ET NUMBER:

TE:
/01/2011

A102