

Richard Molenaar

ARCHITECT

FINISH SCHEDULE

Generate Internal Interior Finish Index for Courtyard Finish Specifications

100 Room Number

Room Name Room Name

4/1/1/1 Ceiling Finish

Wall Finish

Floor Finish

Floors

Thin Set Decorative Porcelain Tile 12"x12"

Thin Set Decorative Porcelain Tile 12"x24"

Carpet and Pad

Carpet - Direct Glue Down

Vinyl Composition Tile

Wood grain Look Porcelain Tile-6"x6"

Epoxy Resin Over Concrete

Level Loop carpet tile

Ceramic Tile 7"x7"

Ceramic Tile 6"x6"

Porcelain Tile 6"x12"

Base

4" Vinyl

Porcelain Tile 4"x12"

4" Carpet w/Top Binding Edge

Ceramic Tile 6"x6"

Porcelain Tile 12"x6"

Porcelain Tile 12"x6"

Ceramic Tile 6"x6"

None Required

Epoxy Resin

Walls

Painted Gap Bd (Eggshell) (1) Base (Eme)

Ceramic Tile

Vinyl Wallcovering

Painted Gap Bd (semi-gloss latex Emme)

Painted Concrete Masonry Units (Epoxy Paint)

Painted Gap Bd-Hal

Textured -acrylic based spattle knock-down finish to meet fireproof and/or Ours specifications

Embossed FPE Panels

Coatings

Painted Gap Bd (Smooth Finish) Colour Selected By Interior Designer

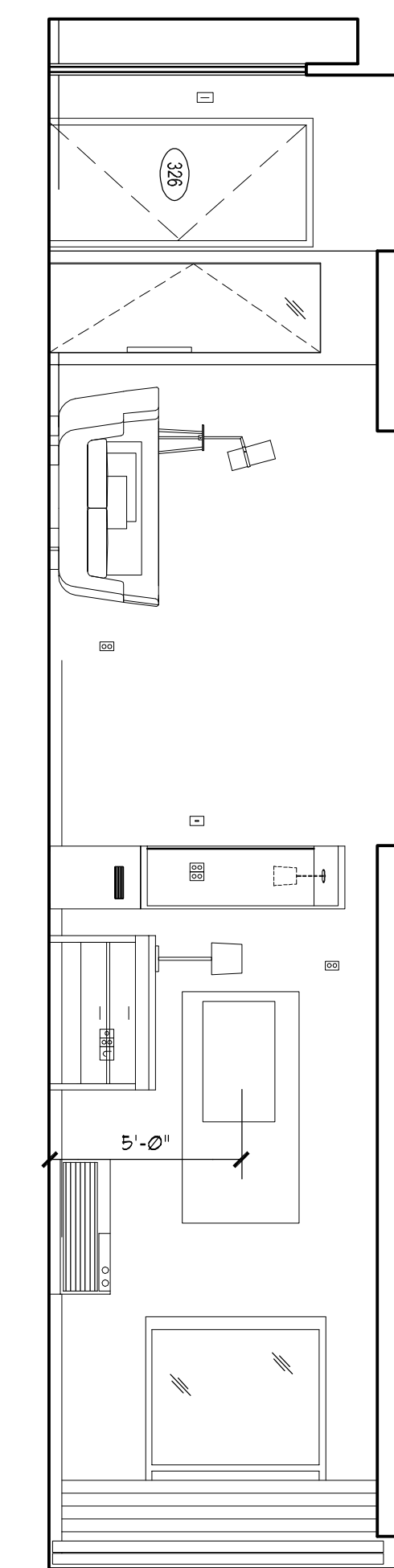
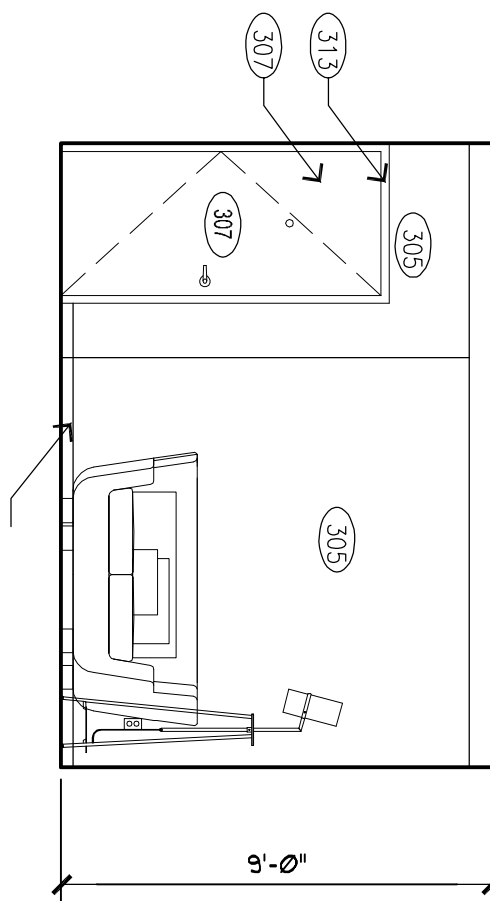
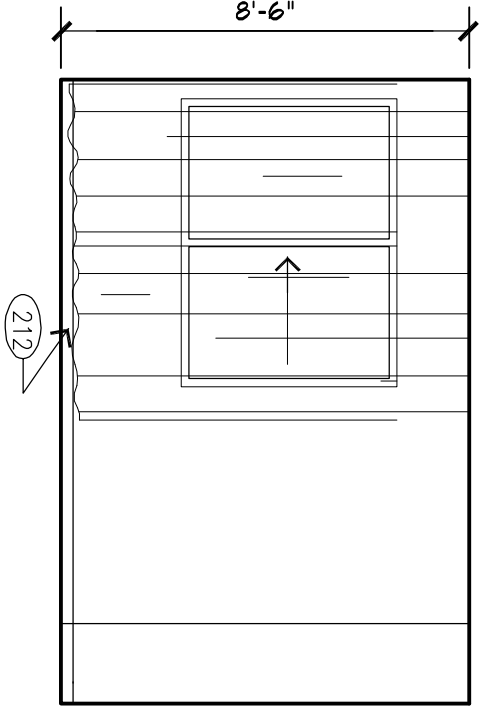
Gap Panel System by Certain Teed Corp

ModelCamere CH-450 Colour White 24"x24"x3/4" Regular 14-1/4" for 3/16" Grid

Gap Panel System by USG Interiors Inc. Pattern: 56031 Clean Room Cleanable Colour: Standard White

24"x48"x3/4" Regular 14-1/4" Panels Grid Model Standard II Fiberglass Colour: White

Textured -acrylic based spattle knock-down finish to meet fireproof and/or Ours specifications



INTERIOR ELEVATION

1/4" = 1'-0"

INTERIOR ELEVATION

1/4" = 1'-0"

INTERIOR ELEVATION

1/4" = 1'-0"

INTERIOR ELEVATION

1/4" = 1'-0"

1/4" = 1'-0"

