

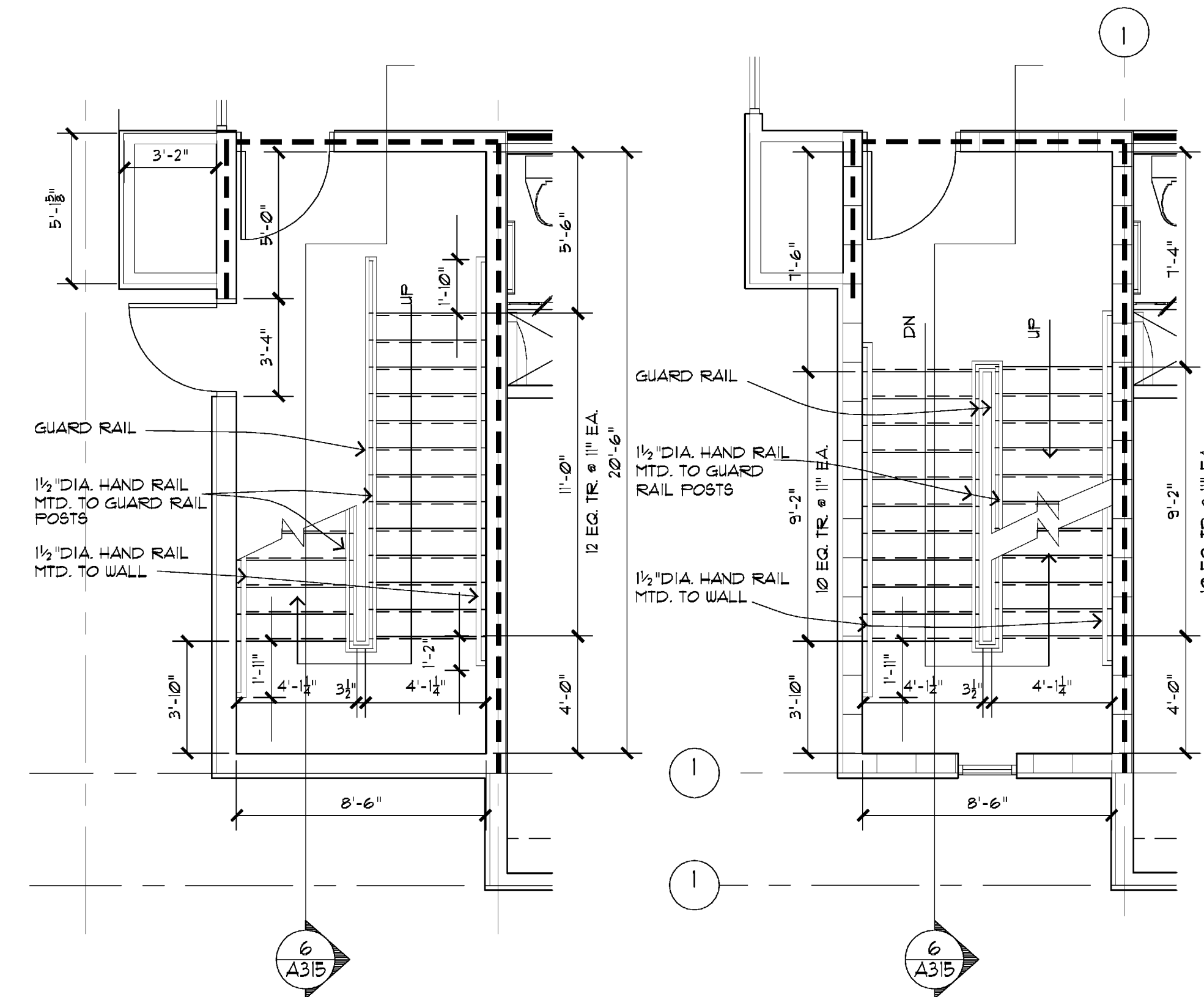
Richard Molenaar

ARCHITECT

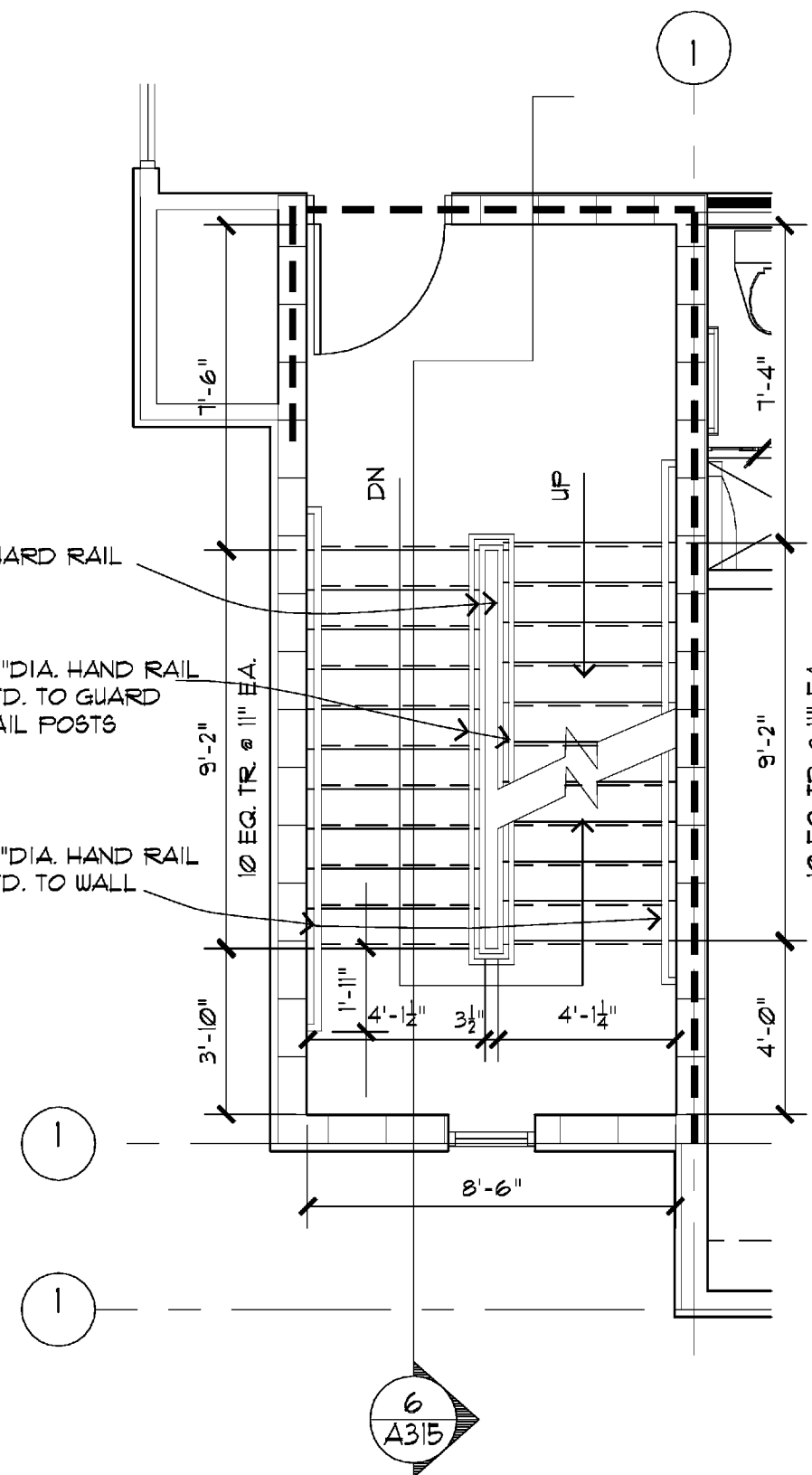
## ALTERNATING TREAD STEEL STAIR

ALTERNATING TREAD STEEL STAIR AS YFG. BY  
LAPEYRE STAIR, INC.  
STAIR CONSTRUCTION: CARBON STEEL  
60" FLUSH HANDRAIL.

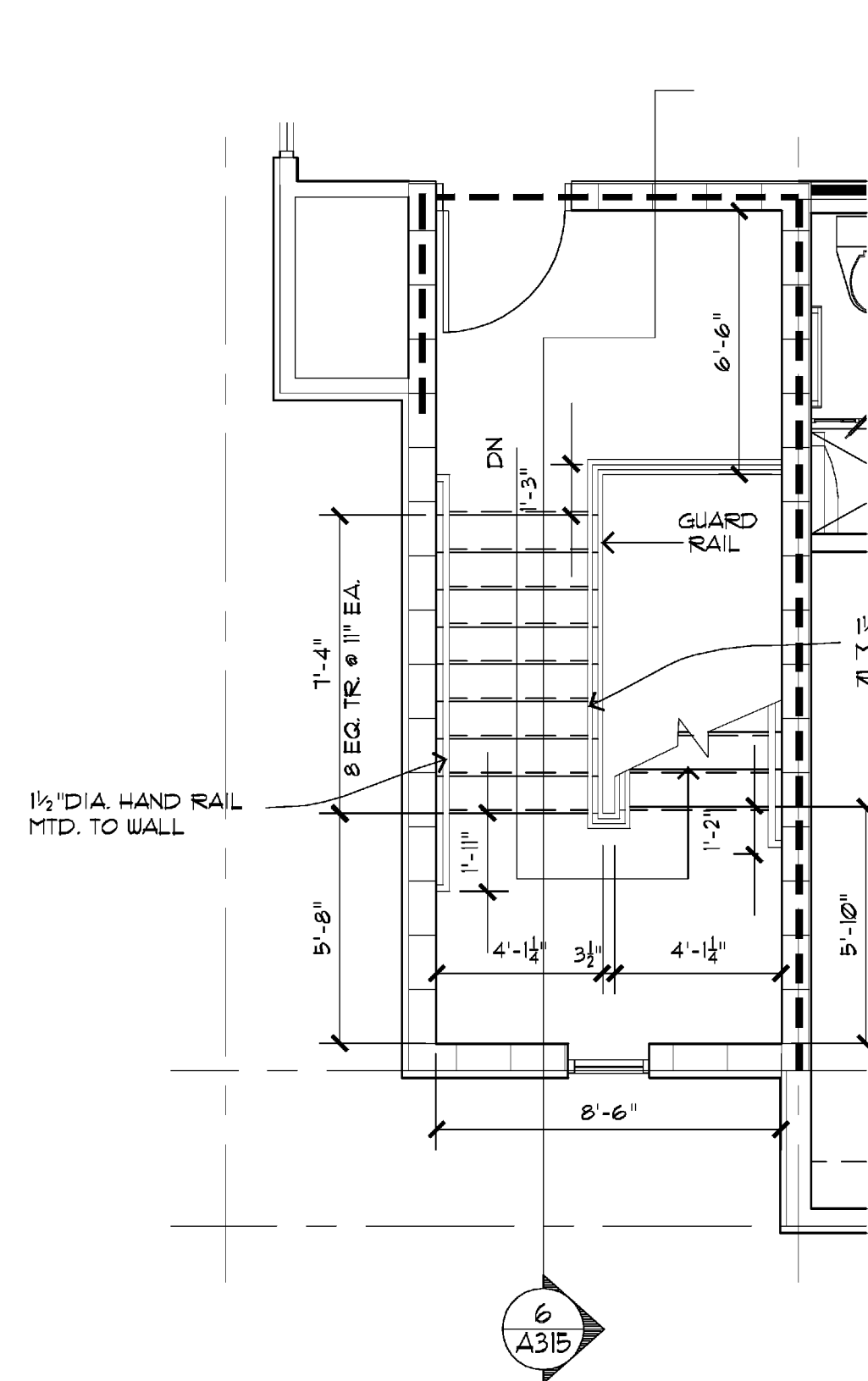
TREADS: 13 GAUGE AISI 1010/15 HRPD PER  
ASTM A569/A1011 GRADE 36 (OR HIGHER)  
LANDING 4 FOOT STAMPINGS: 11 GAUGE AISI  
1010/15 PER ASTM A569/A1011 GRADE 36  
(OR HIGHER)  
STRINGERS: 2"x14"x11 GAUGE U SECTION.  
HANDRAILS: 1 1/2"x20.95" AISI 1010/15 PER  
ASTM A569/A1011 COLD DRAWN, FULLY  
ANNEALED TUBE PER ASTM A513 GRADE  
1020 OR HIGHER AS-WELDED TUBING OR  
ASTM A500 GRADE B.  
HOT DIPPED GALVANIZED FINISH.  
SUBMIT SHOP DRAWINGS FOR APPROVAL  
PRIOR TO FABRICATION.



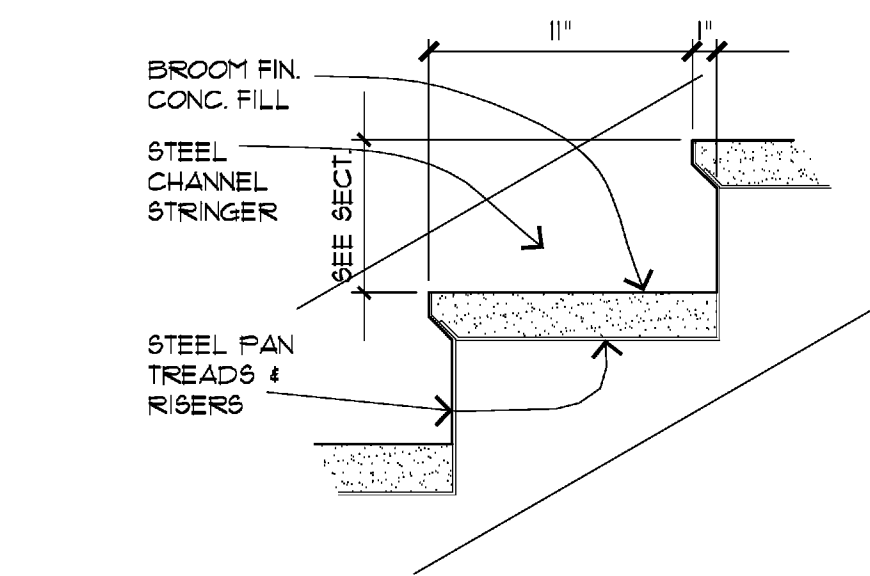
**1 STAIR No. 1-GR. FLR.**  
1/4" = 1'-0" STAIR No. 2 OPPOSITE HAND AX-X-X



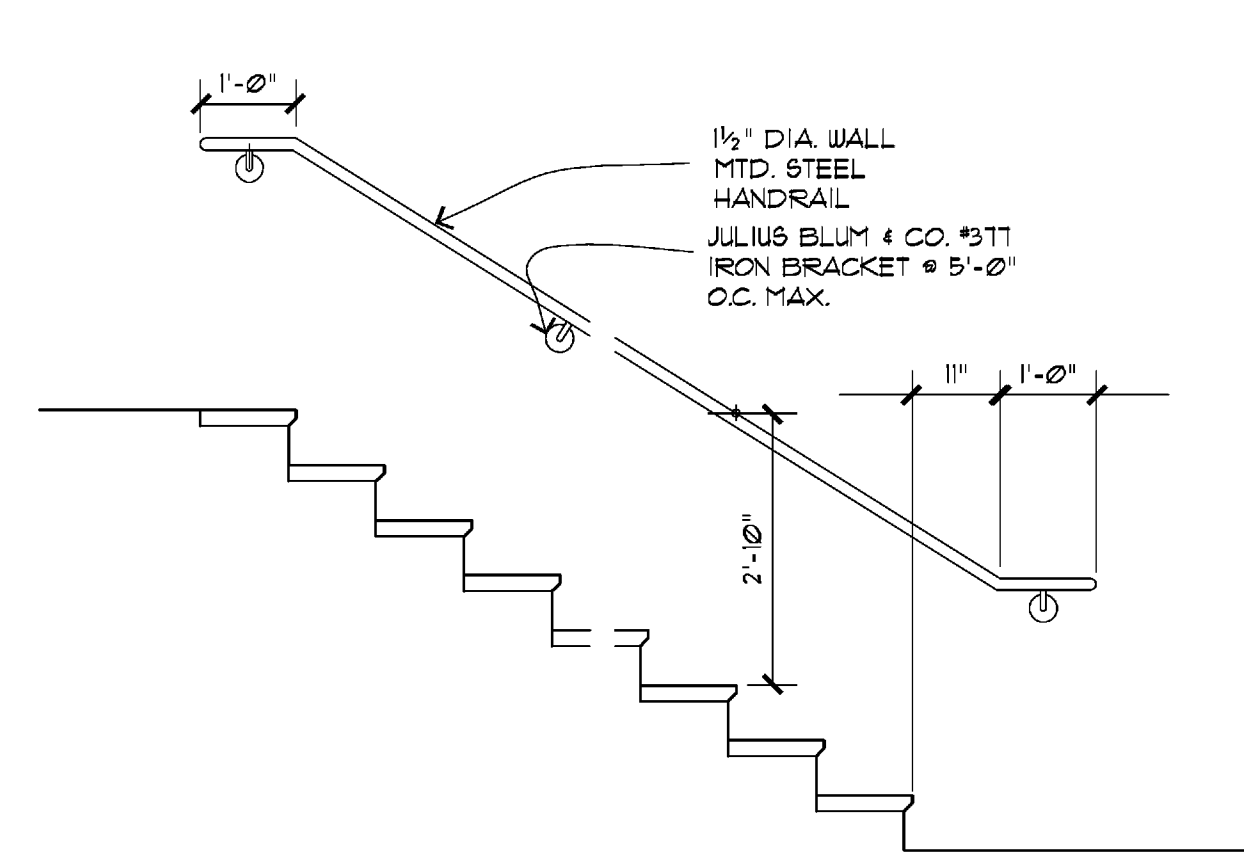
**2 STAIR No. 1-2nd/3rd FLR.**  
1/4" = 1'-0" STAIR No. 2 OPPOSITE HAND AX-X-X



**3 STAIR No. 1-4th FLR.**  
1/4" = 1'-0" STAIR No. 2 OPPOSITE HAND AX-X-X



**4 STAIR TREAD DET.**  
1/2" = 1'-0" AX-X-X

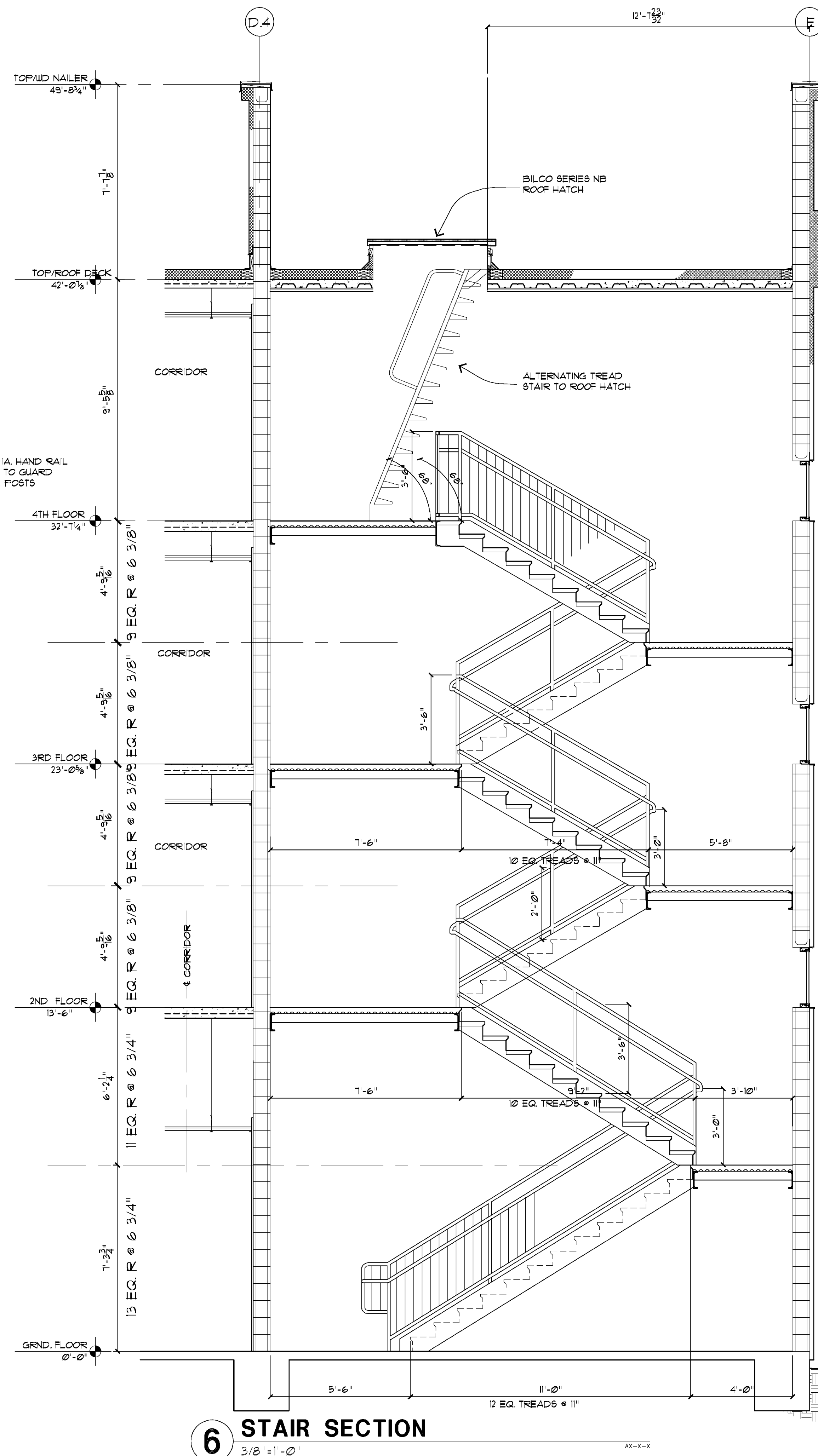


**5 TYP. WALL MTD. RAIL DETAIL**  
1/2" = 1'-0" AX-X-X

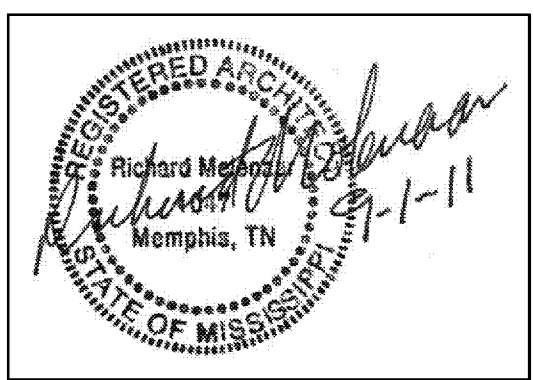
### STAIR NOTES

PROVIDE COMPLETE HANDRAIL/GUARDRAIL SYSTEM  
IN STAIR #1 & #2 IN CONFORMANCE WITH 2006  
INTERNATIONAL BUILDING CODE.

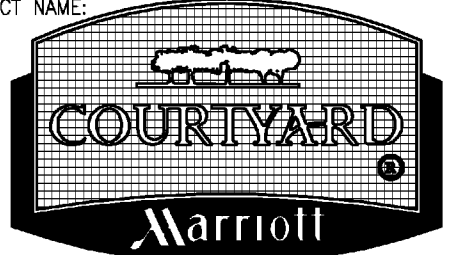
- STAIR HANDRAIL - 1 1/2" DIA. ROUND PAINTED  
STEEL TUBE, HANDRAIL MOUNTED TO WALL  
AND TO GUARDRAIL POSTS.
- GUARDRAIL:
  - TOP RAIL, POSTS AND BOTTOM RAILS - 1 1/2"  
SQUARE PAINTED STEEL TUBE, ANCHOR  
POSTS SECURELY TO STEEL CHANNEL  
STRINGER AND LANDING CONSTRUCTION.
  - FICKET RAILS - 3/4" SQUARE PAINTED  
STEEL TUBES @ 4 1/2" O.C.



**6 STAIR SECTION**  
3/8" = 1'-0" AX-X-X



PROJECT NAME:



SHEET TITLE:

Stair Details

PROJECT NO.  
09018

LATEST REVISION:

DRAWN BY:  
CJ

CHECKED BY:  
RM

SHEET NUMBER:

DATE:  
09/01/2011

A315