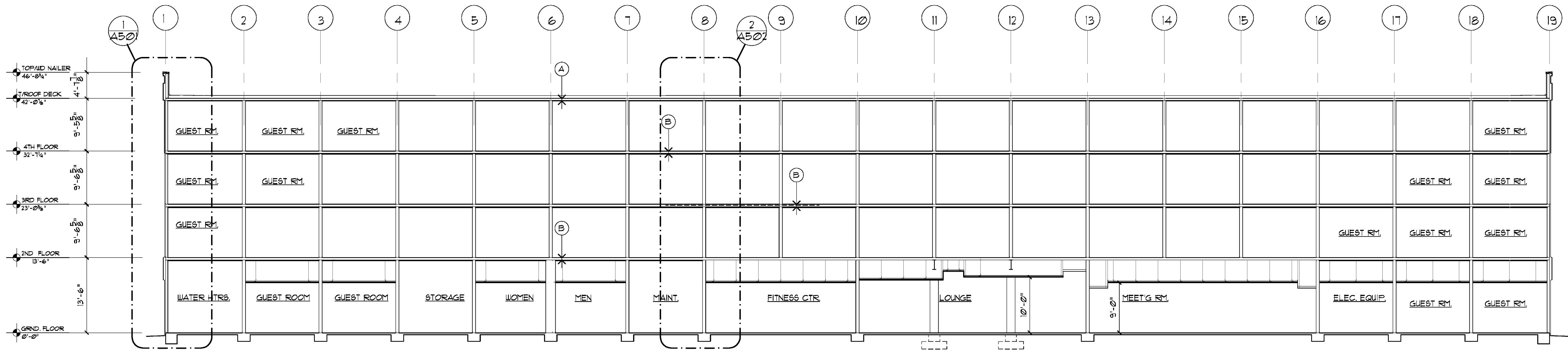


Richard Molenaar

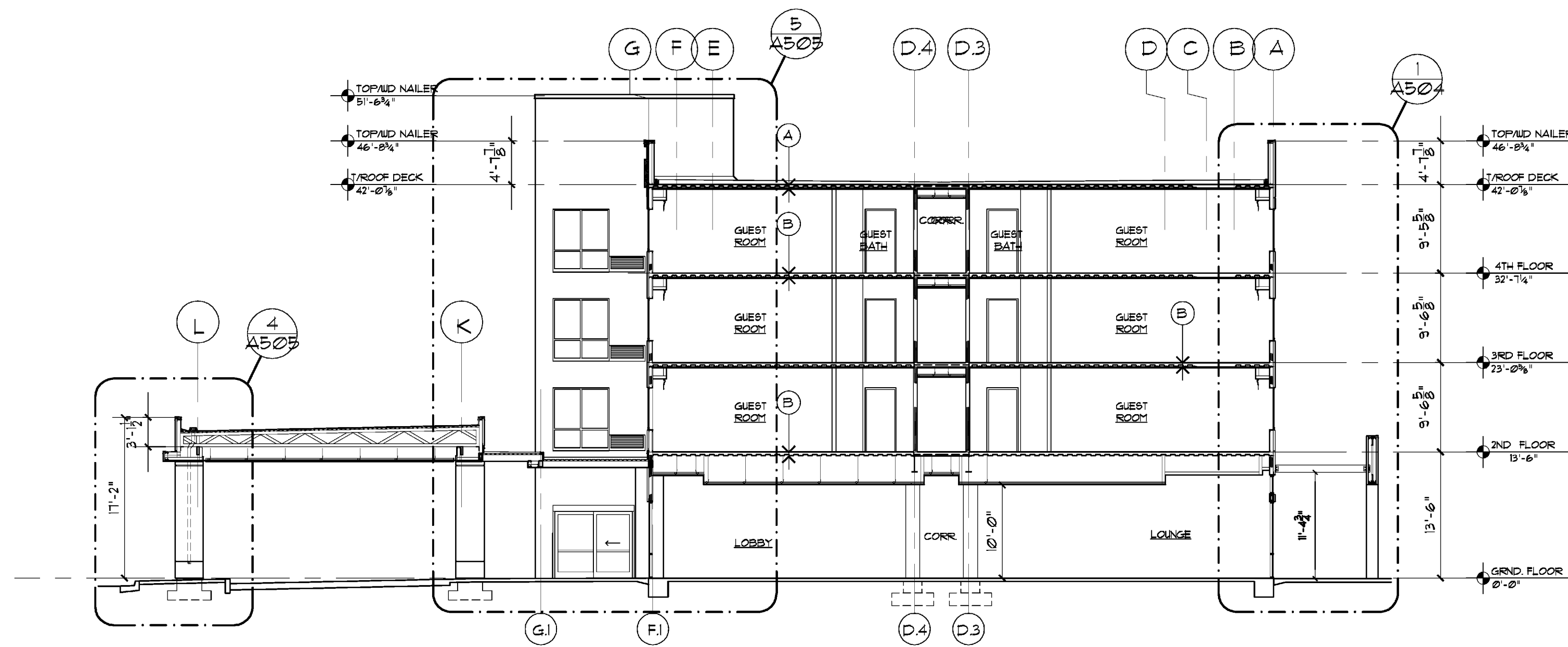
ARCHITECT



1 BUILDING SECTION

3/32" = 1'-0"

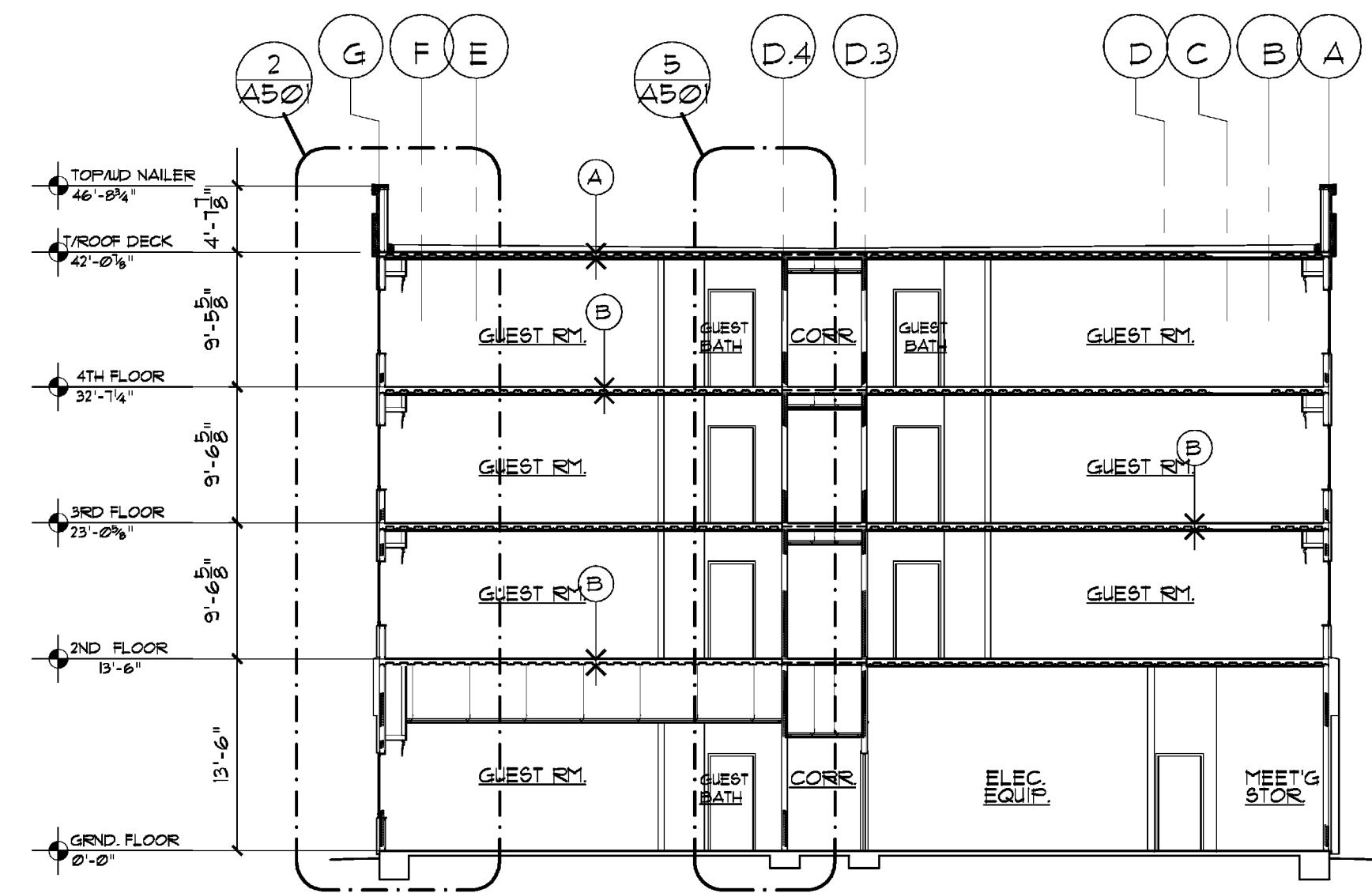
AX-X-X



2 BUILDING SECTION

3/32" = 1'-0"

AX-X-X



3 BUILDING SECTION

3/32" = 1'-0"

AX-X-X

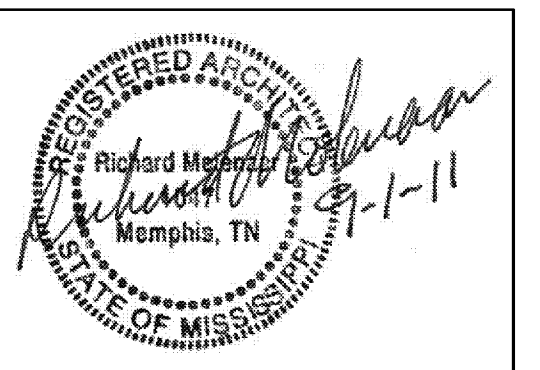
FIRE RESISTANT ASSEMBLIES

- (A) ROOF/CEILING ASSEMBLY - 1 HR.

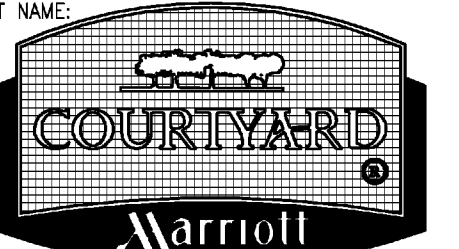
ROOF/CEILING ASSEMBLY ON METAL DECK: ASSEMBLY TO COMPLY WITH UL DESIGN No. D331.
4" LIGHTWEIGHT CONCRETE OVER COMPOSITE 2" DEEP GALV. STEEL FLOOR AND FORM UNITS.
REF. STRUCT. DRAWINGS FOR DECK UNIT TYPE 4 THICKNESS.

- (B) FLOOR/CEILING ASSEMBLY - 1 HR.

FLOOR/CEILING ASSEMBLY ON METAL DECK: ASSEMBLY TO COMPLY WITH UL DESIGN No. D331.
5" LIGHTWEIGHT CONCRETE OVER COMPOSITE 2" DEEP GALV. STEEL FLOOR AND FORM UNITS.
REF. STRUCT. DRAWINGS FOR DECK UNIT TYPE 4 THICKNESS.



PROJECT NAME:



Riverwind Drive Pearl, Mississippi

SHEET TITLE:

PROJECT NO.

09018

LATEST REVISION:



DRAWN BY:

CJ

CHECKED BY:

RM

SHEET NUMBER:

DATE:

9/01/2011

A403