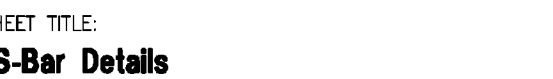




1. COORDINATE WITH FOOD SERVICE DRAWINGS AND FINAL EQUIPMENT INFORMATION, INCLUDING DIMENSIONS AND UTILITY REQUIREMENTS.
2. TO ORDER MENU BOARDS, PLEASE CONTACT JACKIE DIFFENBAUGH FROM GRAPHIC SYSTEMS AT 316-267-4171.
3. FINISH COVER PLATES & RECEPTACLES IN ALL MILLWORK PIECES TO MATCH ADJACENT FINISH COLORS.
4. RUN ELECTRICAL THROUGH CEILING TO S-BAR WHENEVER POSSIBLE.
5. ALL SOLID SURFACE COUNTERTOPS TO HAVE EASED EDGE, TYPICAL.

- 1 MILLWORK WALLS FOR DROP IN REFRIGERATOR MUST BE STRONG ENOUGH TO SUPPORT THE TOTAL WEIGHT OF THE REFRIGERATOR AND MAXIMUM PRODUCT LOAD.
- 2 PROPRIETARY COFFEE SIGNAGE
- 3 NETWORK PLUG CONNECTIONS FOR MICROS & MICROS PRINTERS AT S-BAR SHALL BE SECURED W/ R/4S PLUG LOCK-IN DEVICE. MANUFACTURER: PANUDIT  
MODEL: PSL-DCPL. PROVIDE 1 1/2" DIAMETER CUTOUT AT EACH LOCATION.
- 4 FIXED MENU BOARD PREFERRED, BUT HINGED VERSION IS AVAILABLE. ARCHITECT TO COORDINATE W/ GRAPHIC SYSTEMS & MODIFY MENU BOARD TO BE IN VERTICAL POSITION, IF HINGED OPTION IS USED.
- 5 3" DIAMETER CUTOUT FOR PROPRIETARY COFFEE MACHINE. COORDINATE WITH EQUIPMENT SPECIFICATIONS.
- 6 HOLD OUTLETS AT S-BAR COUNTER AT 6" ABOVE THE COUNTER SURFACE AT THE BACK BAR.
- 7 CONTRACTOR IS TO COORDINATE POWER REQUIREMENTS OUTLINED IN THE AC POWER REQUIREMENTS SECTION OF THE SITE PREPARATION GUIDE FOR ALL MICROS EQUIPMENT. GC TO MEET WITH THE MICROS REP TO SIGN OFF ON WARRANTY.



MEET TITLE:  
**S-Bar Details**

PROJECT NO. 9018 LATEST REVISION:

DRAWN BY: CHECKED BY: SHEET NUMBER:

rm

DATE: 01/01/2011 A713

A713


$$\frac{1}{2}'' = 1' - \emptyset''$$