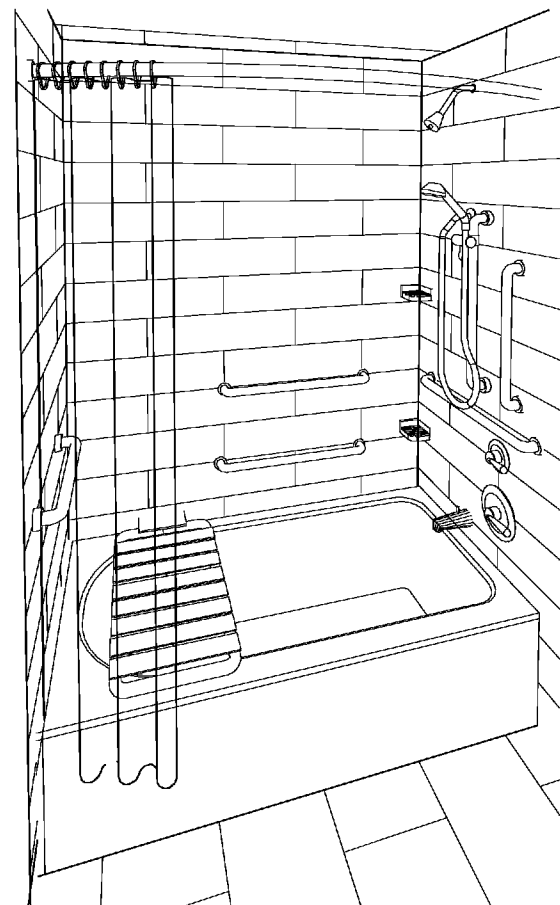
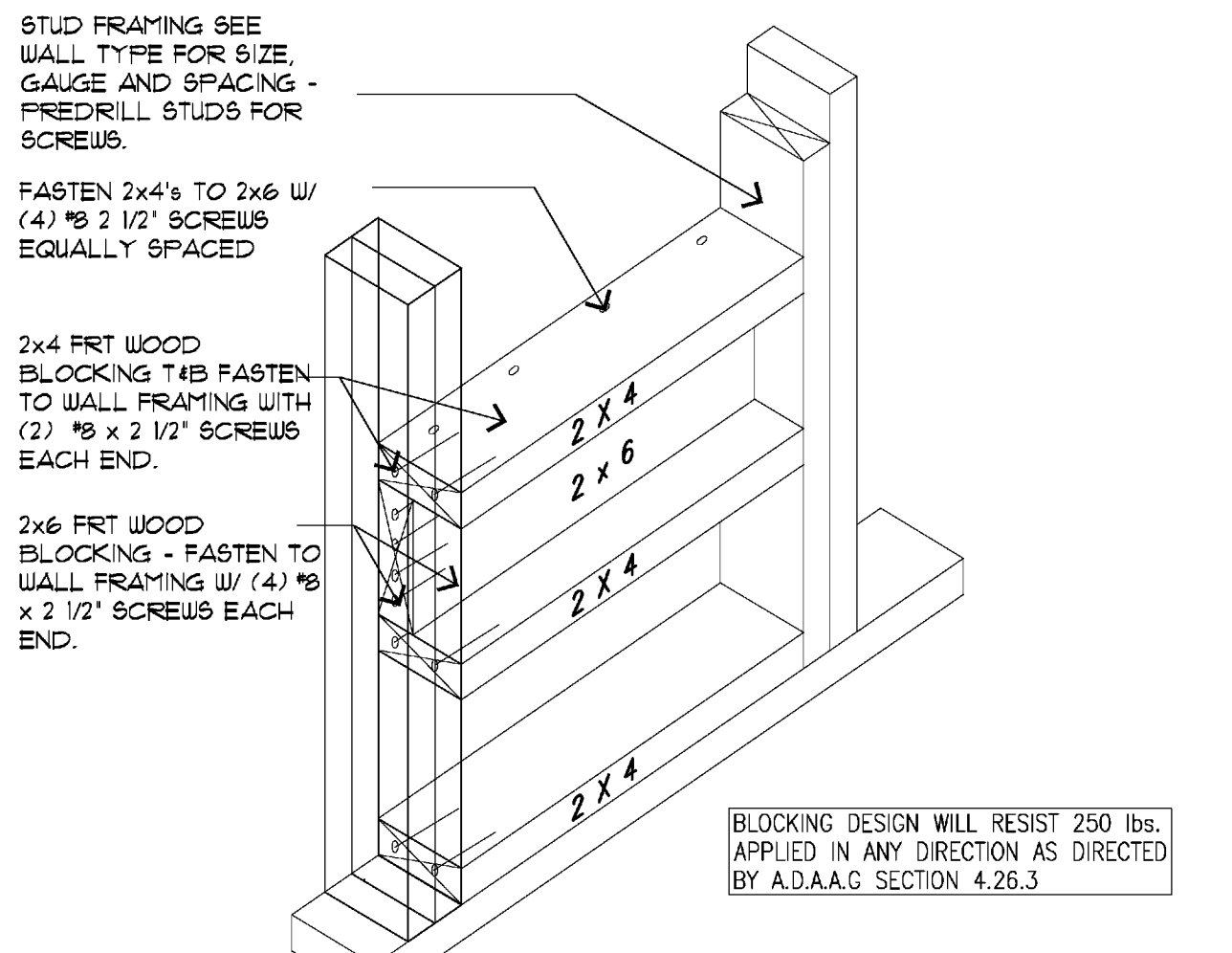


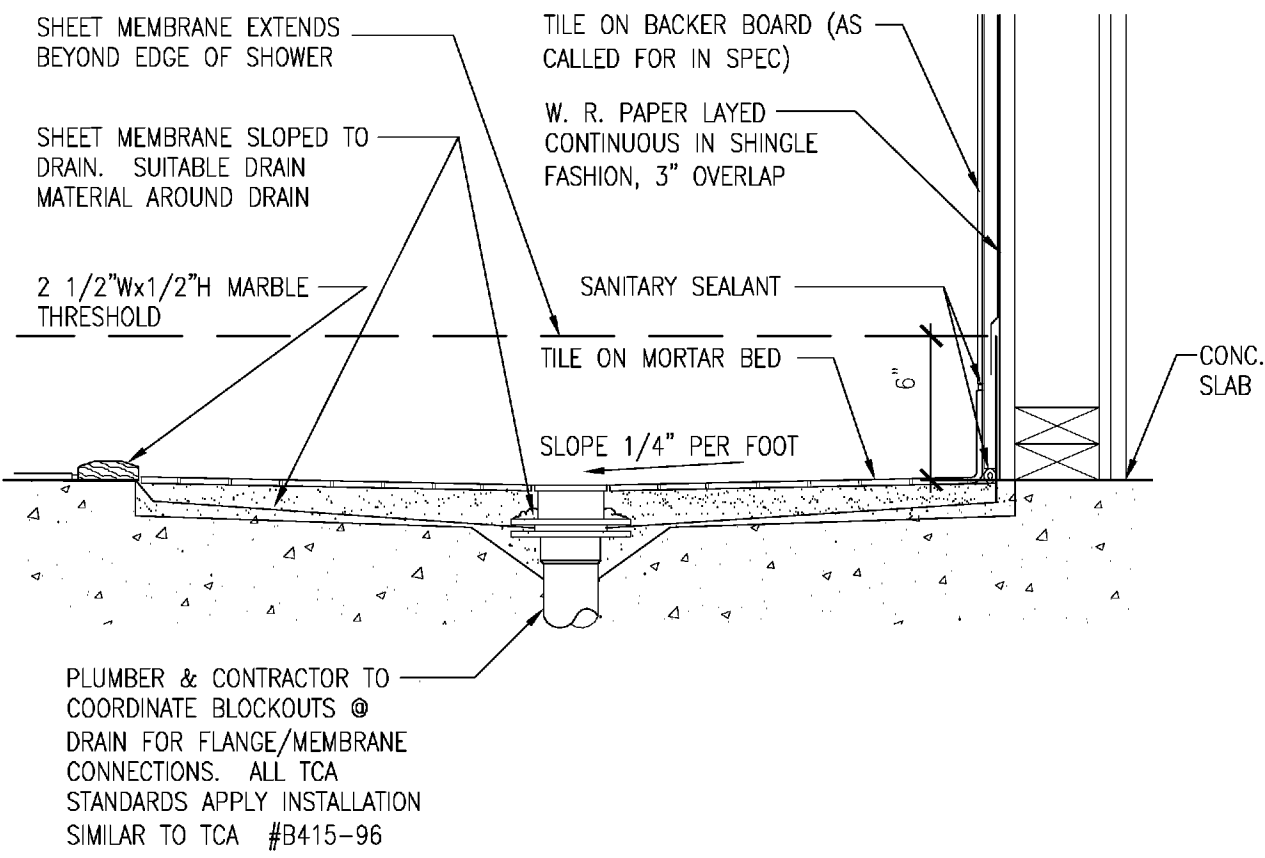
**12 ACCESS. SHOWER**  
NO SCALE  
AX-X-X



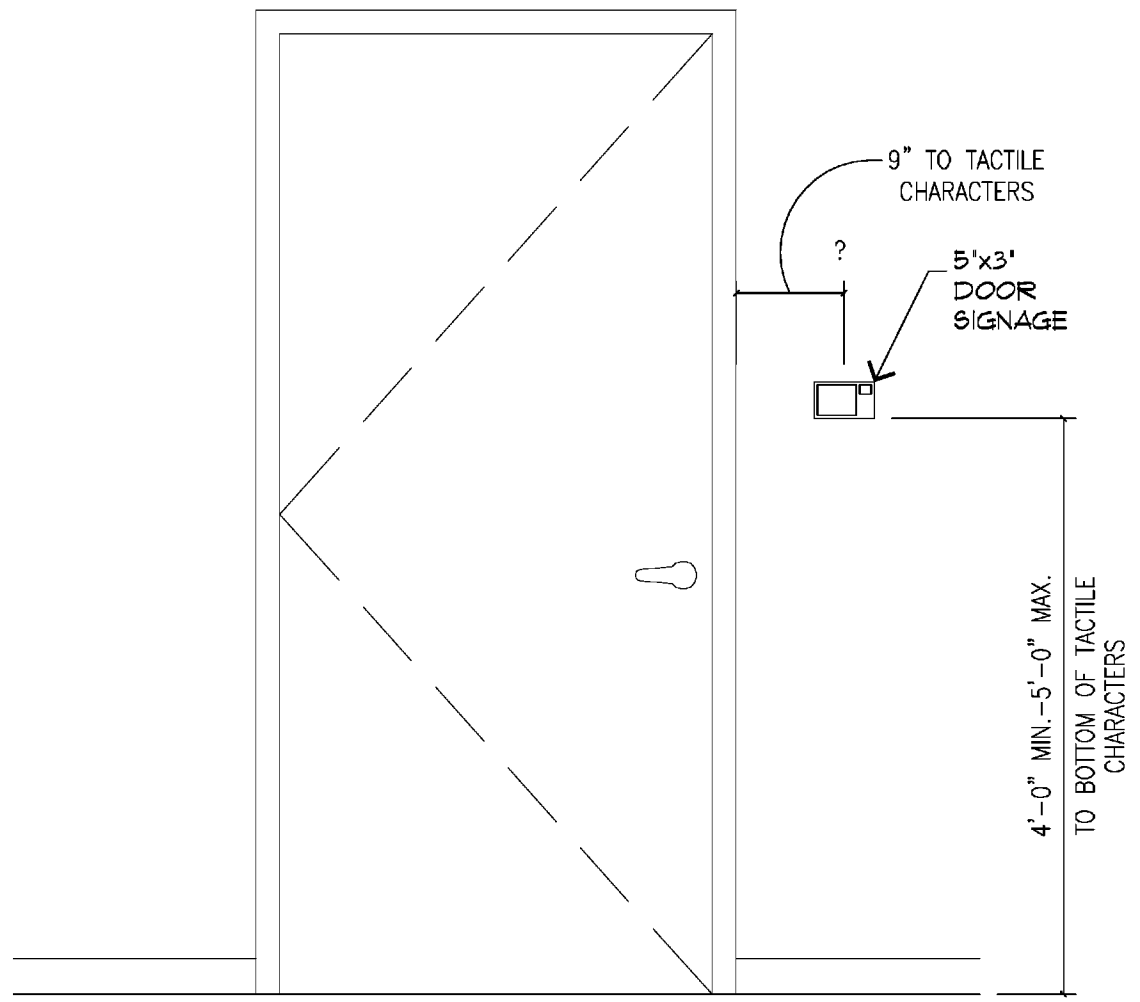
**11 ACCESS. TUB**  
NO SCALE  
AX-X-X



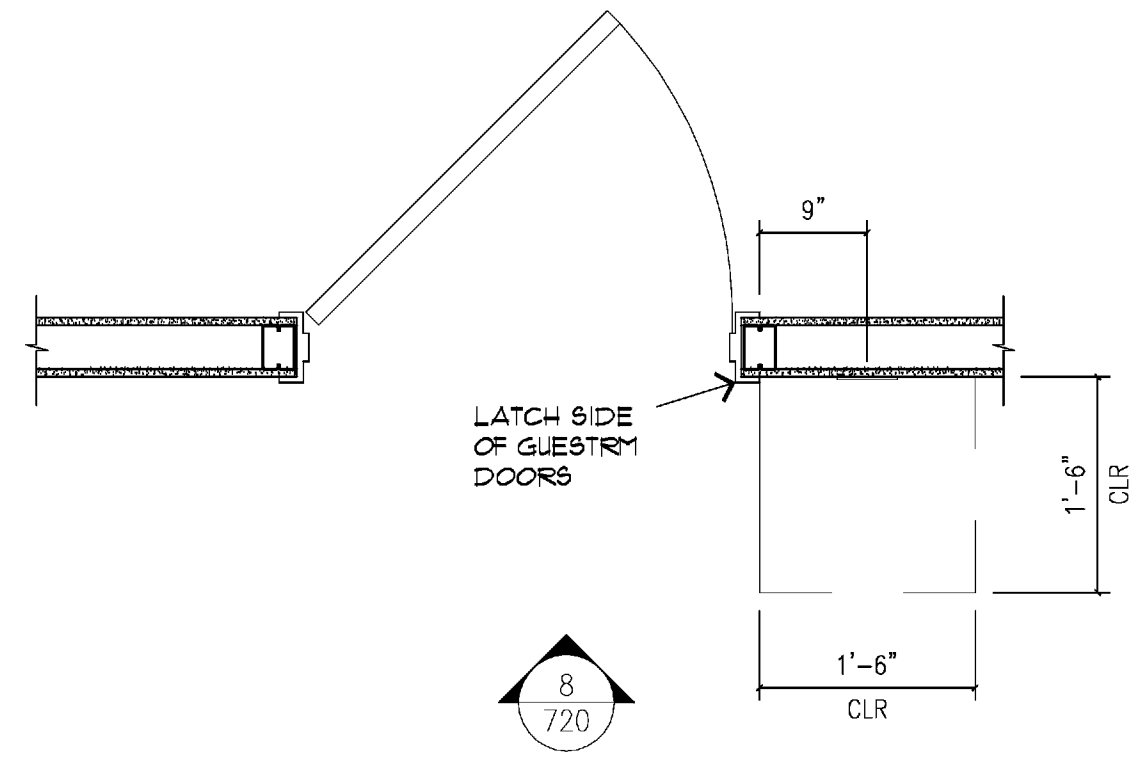
**10 ACCESS. TUB/SHWR SEAT BLK'G**  
3/4" = 1'-0"  
AX-X



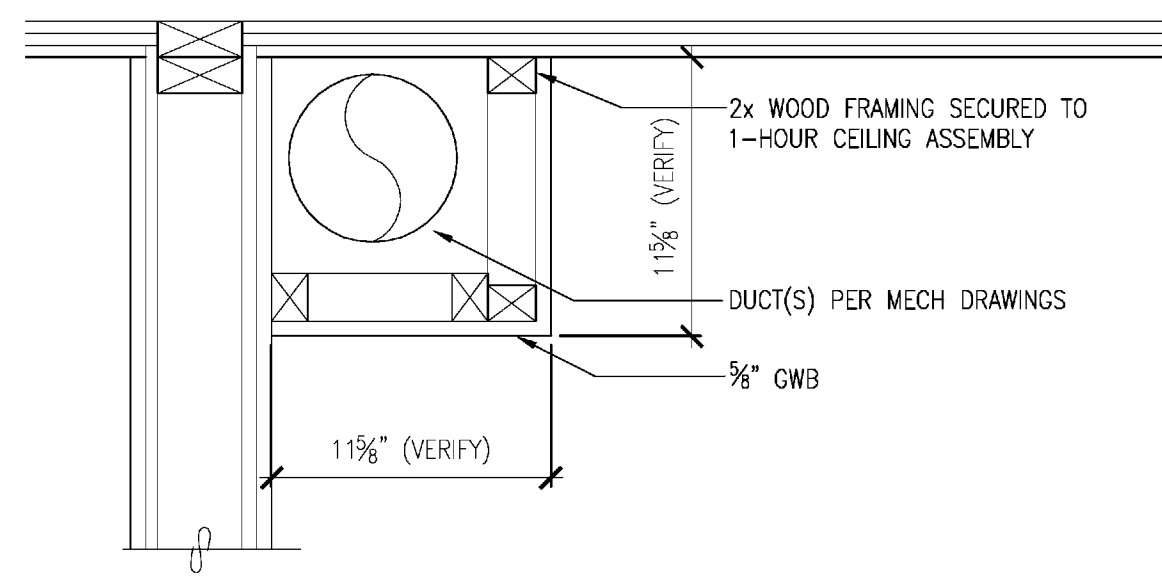
**13 ROLL-IN SHOWER**  
1/2" = 1'-0"  
AX-X-X



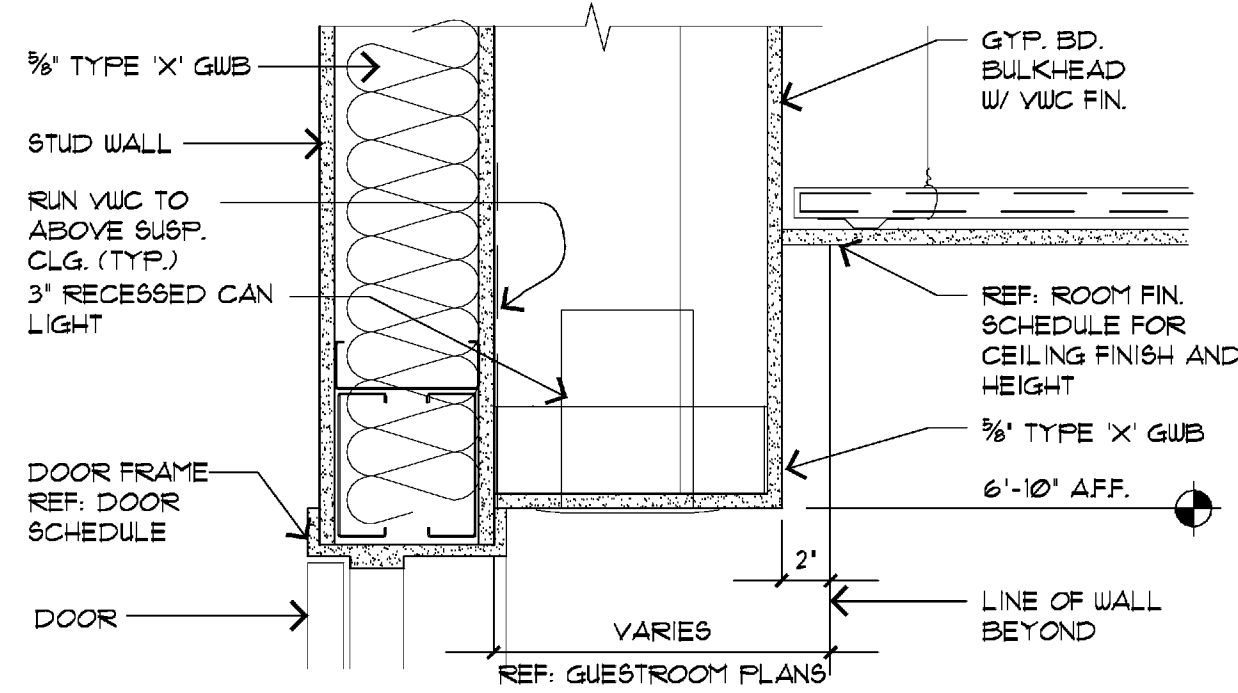
**8 ELEVATION-DOOR SIGNAGE**  
3/4" = 1'-0"  
AX-X-X



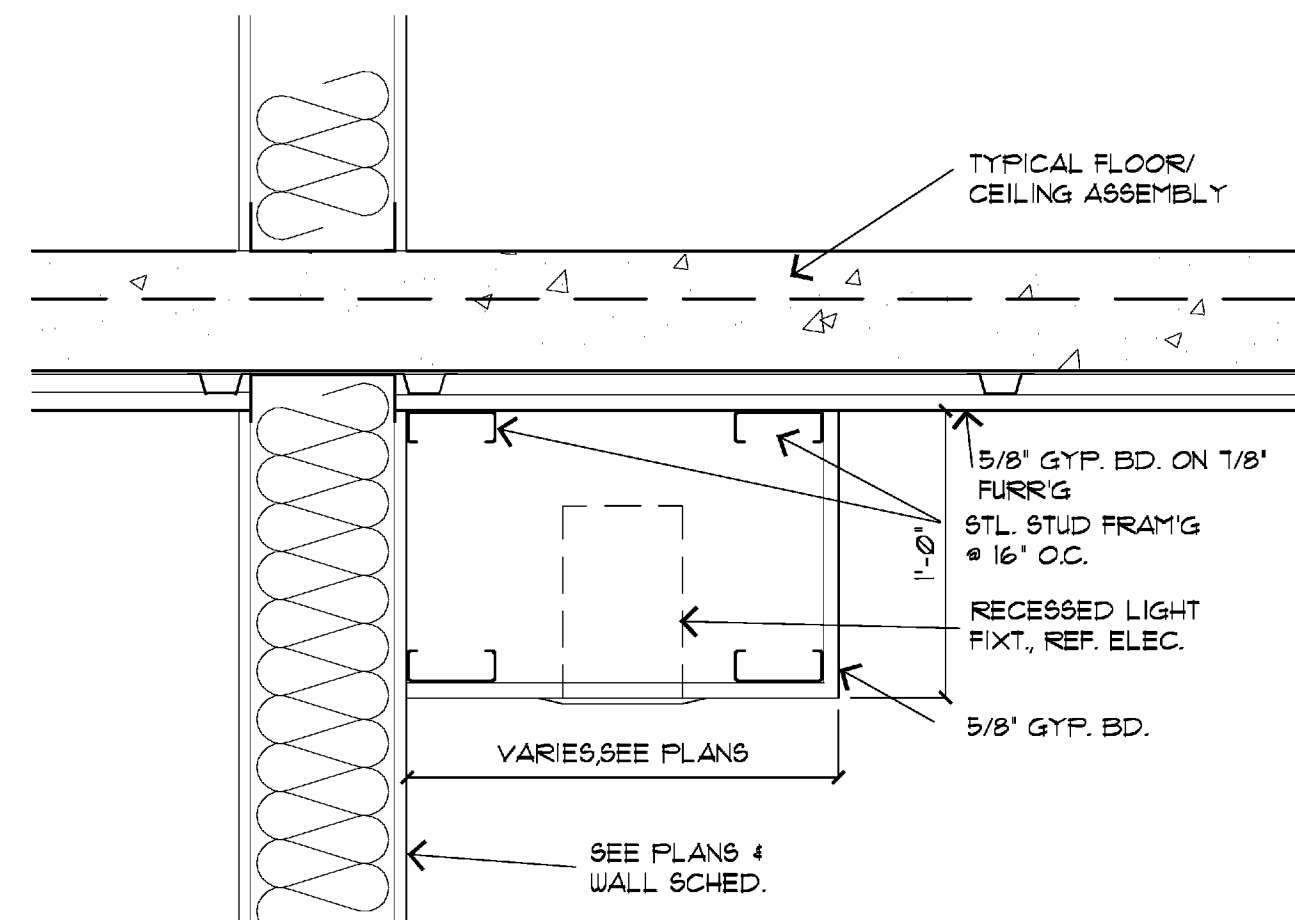
**4 PLAN-DOOR SIGNAGE**  
3/4" = 1'-0"  
AX-X



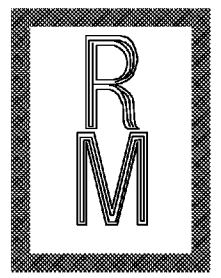
**3 SOFFIT-EXHAUST DUCT**  
1/2" = 1'-0"  
AX-X-X



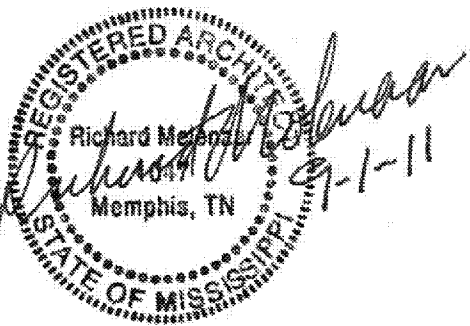
**2 GUESTRM. LIGHT COVE**  
1/2" = 1'-0"  
AX-X-X



**1 SOFFIT DETAIL**  
1/2" = 1'-0"  
AX-X-X



Richard Molenaar  
ARCHITECT



PROJECT NAME:		
Riverwind Drive Pearl, Mississippi		
SHEET TITLE:		
Interior Details		
PROJECT NO.	LATEST REVISION:	
09018		
DRAWN BY:	CHECKED BY:	SHEET NUMBER:
cj		A720
DATE:		
9/01/2011		