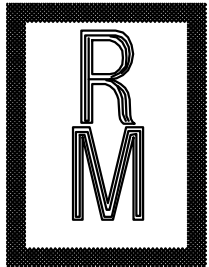
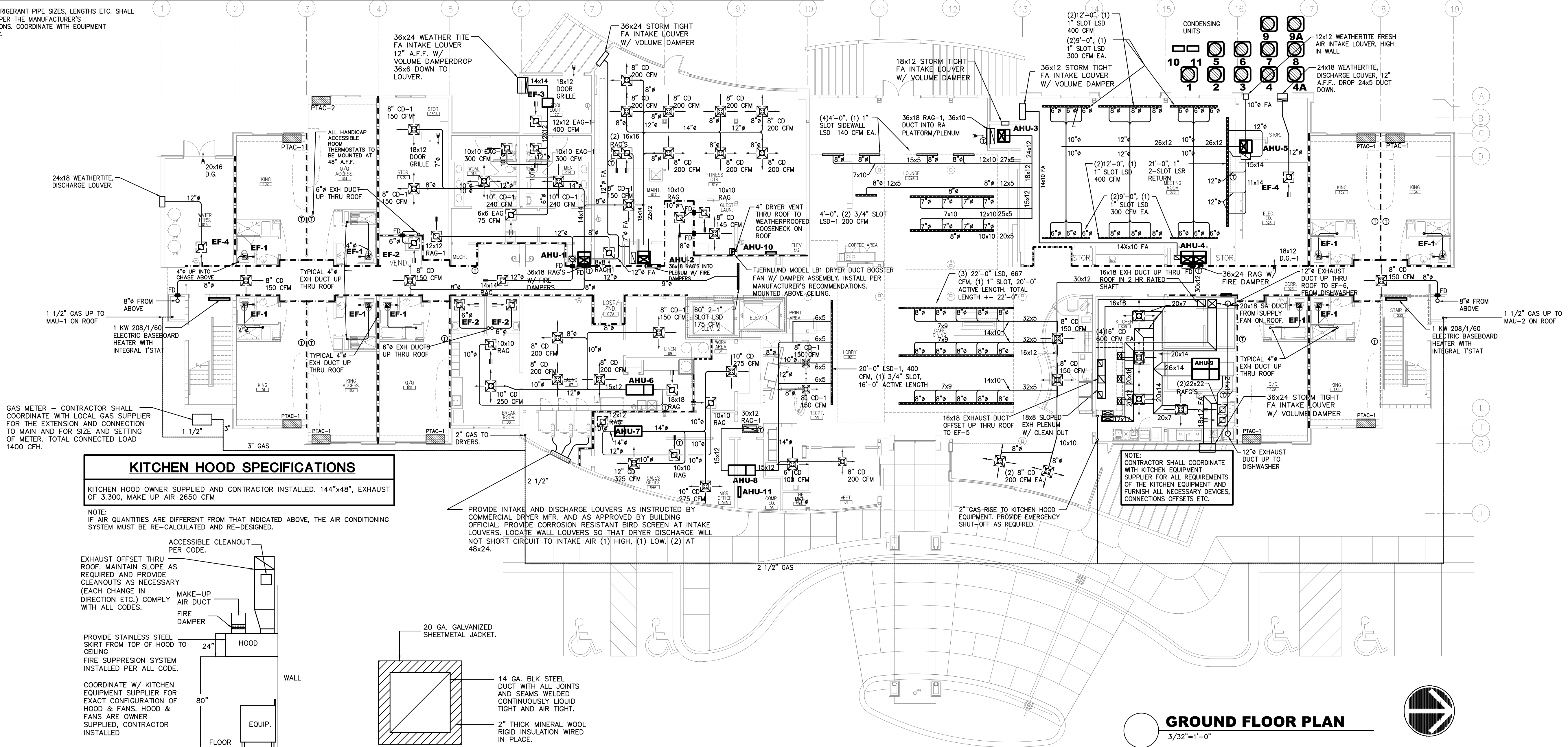


HEATING AND AIR CONDITIONING SCHEDULE											CONDENSING UNIT				AIR HANDLING UNIT	
	MFR. & MODEL	TOTAL CFM	O.S.A. CFM	TOTAL COOLING	SENSIBLE COOLING	E.S.P.	VOLTAGE	H.P.	ELEC. HT KW	SINGLE POINT CONNECTION MCA	MFG. & MODEL	M.C.A.	COMP. R.L.A.	FAN F.L.A.	VOLTAGE	REMARKS
AHU-1	TRANE GAM5A0C48M41SAA	1400	400	41,800	29,500	.8"	208/1/60	3/4	(2) STAGE 7.2 3.6	43.0 22.0	CU-1 TRANE 4TTA3042A3	18.0	13.5	1.3	208/3/60	COMPLETE W/ 2-STAGE WALL MOUNTED T'STAT WITH TIME DELAY AND HARD START KIT.
AHU-2	TRANE GAM5A0C48M51SAA	1600	120	46,800	34,700	.8"	208/1/60	3/4	7.2	43	CU-2 TRANE 4TTA3048A3	20.0	14.6	1.3	208/3/60	COMPLETE W/ WALL MOUNTED T'STAT WITH TIME DELAY AND HARD START KIT.
AHU-3	TRANE GAM5A0C60M51SAA	1800	300	59,700	43,400	.6"	208/1/60	1.0	(2) STAGE 7.2 3.6	43.0 22.0	CU-3 TRANE 4TTA3060A3	24.0	18.1	1.3	208/3/60	COMPLETE W/ WALL MOUNTED T'STAT WITH TIME DELAY AND HARD START KIT.
AHU-4	TRANE GAM5A0C42M41SAA (2) TWINNED UNITS REQUIRED	1200 x2	600	41,800 x2	29,500 x2	.8"	208/1/60	3/4 x2	7.2 x2	48 x2	CU-4 TRANE 4TTA3042A3 (2) UNITS REQUIRED	18.0 x2	13.5 x2	1.3 x2	208/3/60	COMPLETE W/ WALL MOUNTED T'STAT WITH TIME DELAY AND HARD START KIT. COMPLETE W/ TWINNING KIT & 2-STAGE T'STAT
AHU-5	TRANE GAM5A0C60M51SAA	2000	250	59,700	43,400	.6"	208/1/60	1.0	(2) STAGE 7.2 3.6	53.0 22.0	CU-5 TRANE 4TTA3060A3	24.0	18.1	1.3	208/3/60	COMPLETE W/ WALL MOUNTED T'STAT WITH TIME DELAY AND HARD START KIT.
AHU-6	TRANE GAM5A0B36M31SAA	1000	100	29,000	20,600	.7"	208/1/60	1/2	5.76	40	CU-6 TRANE 4TTA3030A3	10	7.4	0.7	208/3/60	COMPLETE W/ WALL MOUNTED T'STAT WITH TIME DELAY AND HARD START KIT.
AHU-7	TRANE GAM5A0B30M31SAA	875	160	28,420	20,190	.7"	208/1/60	1/3	5.76	38	CU-7 TRANE 4TTA3030A3	10	7.4	0.7	208/3/60	COMPLETE W/ WALL MOUNTED T'STAT WITH TIME DELAY AND HARD START KIT.
AHU-8	TRANE GAM5A0B36M31SAA	1000	160	29,000	20,600	.7"	208/1/60	1/2	7.2	48	CU-8 TRANE 4TTA3036A3	15.0	11.5	0.7	208/3/60	COMPLETE W/ WALL MOUNTED T'STAT WITH TIME DELAY AND HARD START KIT.
AHU-9	TRANE GAM5A0C42M41SAA (2) TWINNED UNITS REQUIRED	1200 x2	600	41,800 x2	29,500 x2	.8"	208/1/60	3/4 x2	7.2 x2	48 x2	CU-9 TRANE 4TTA3042A3 (2) UNITS REQUIRED	18.0 x2	13.5 x2	1.3 x2	208/3/60	COMPLETE W/ WALL MOUNTED T'STAT WITH TIME DELAY AND HARD START KIT. COMPLETE W/ TWINNING KIT & 2-STAGE T'STAT
AHU-10	SANYO 12KW71/12KHW71	300		11,900		.1"	115/1/60	1090 WATTS		20	CU-10 SANYO 12KHW71				115/1/60	COMPLETE W/ WALL MOUNTED T'STAT WITH TIME DELAY AND HARD START KIT.
AHU-11	SANYO 12KW71/12KHW71	300		11,900		.1"	115/1/60	1090 WATTS		20	CU-11 SANYO 12KHW71				115/1/60	COMPLETE W/ WALL MOUNTED T'STAT WITH TIME DELAY AND HARD START KIT.

NOTE: ALL REFRIGERANT PIPE SIZES, LENGTHS ETC. SHALL BE INSTALLED PER THE MANUFACTURER'S RECOMMENDATIONS. COORDINATE WITH EQUIPMENT MANUFACTURER.



Richard Molenaar  
ARCHITECT



PROJECT NAME:



Riverwind Drive Pearl, Mississippi

SHEET TITLE:  
GROUND FLOOR  
HVAC

PROJECT NO.

PROJ#

DRAWN BY:

RHP

DATE:

09-01-11

LATEST REVISION:

10-05-11

SHEET NUMBER:

M101