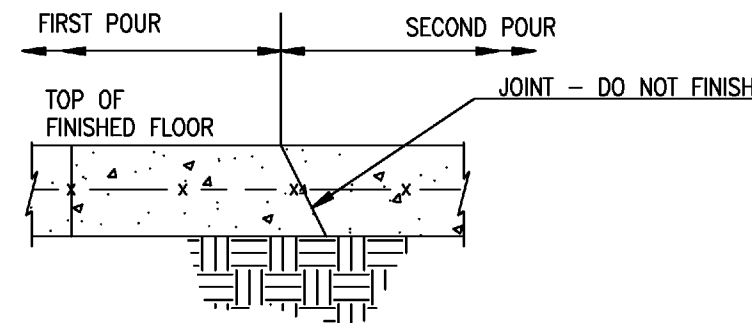
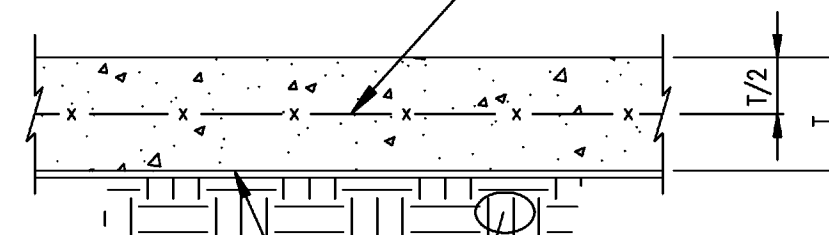


CONTROL JOINT
NTS

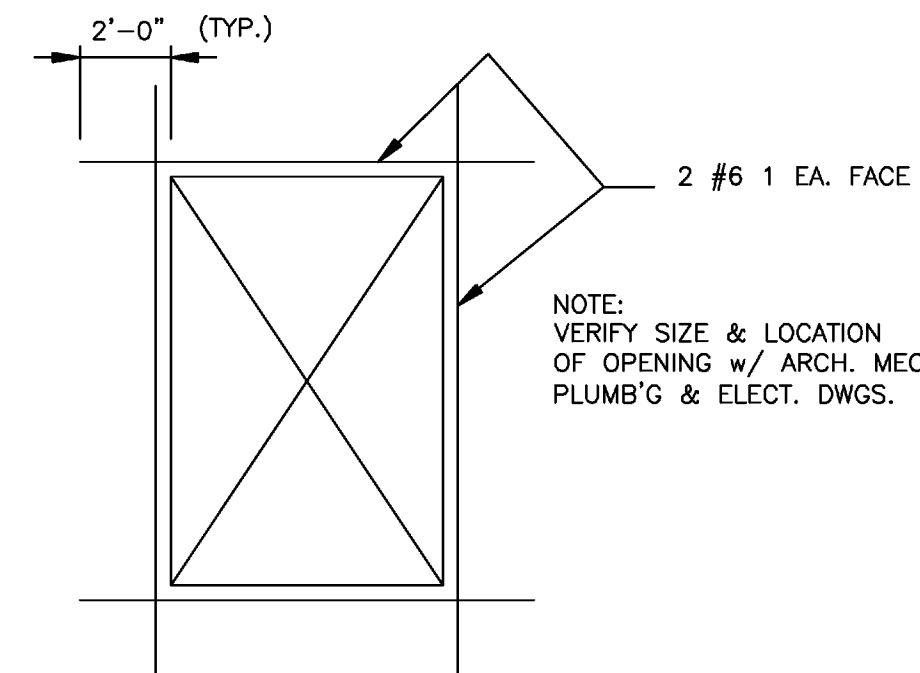


CONSTRUCTION JOINT
NTS

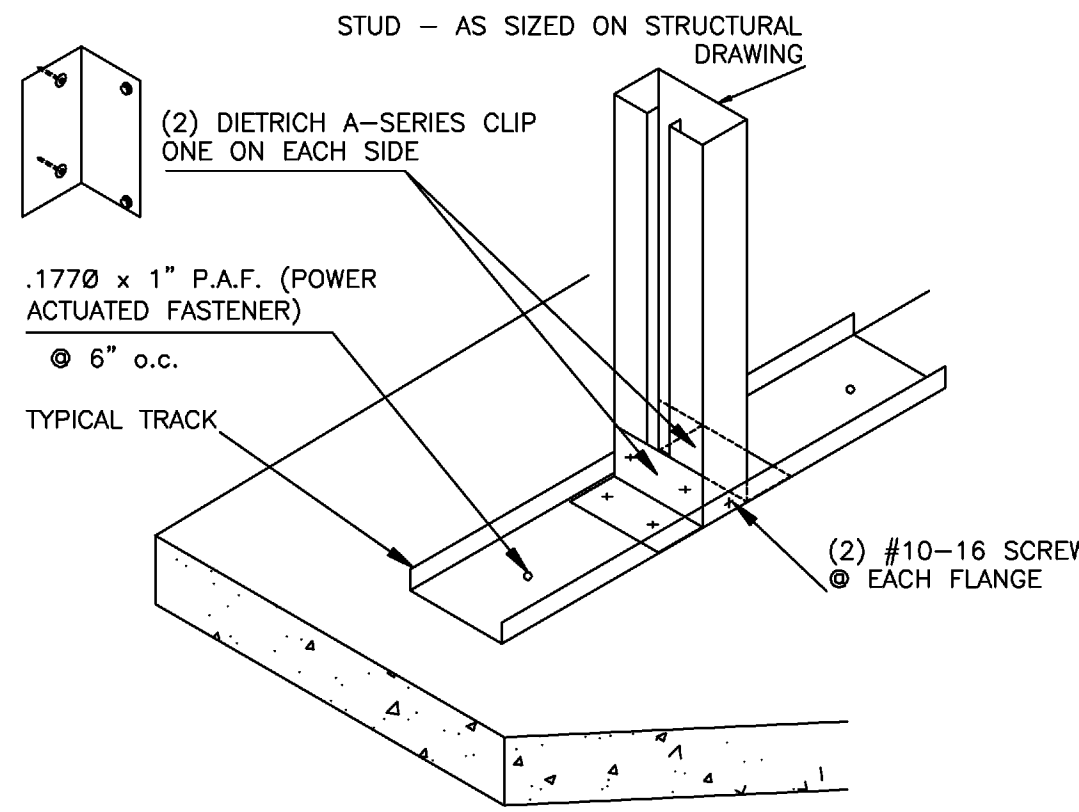
PREPARE A SUPPORTING GRID OF #4 BARS AT 4 FT. O.C. IN BOTH DIRECTIONS SUPPORTED ON CHAIRS TO support wire mesh.
6x6-W2.0 xW2.0 WWF (WELDED WIRE FABRIC)



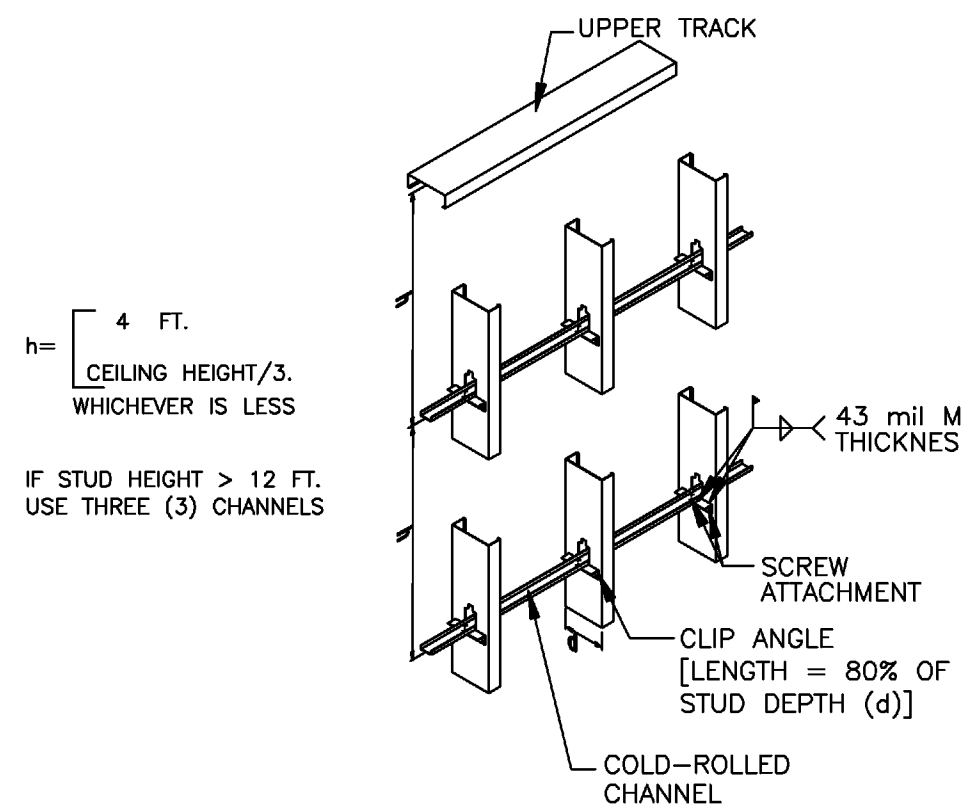
TYPICAL SLAB DETAIL
NTS



TYPICAL DETAIL OF ADDITIONAL REINFORCING AROUND OPENING IN CONCRETE OR CMU WALL

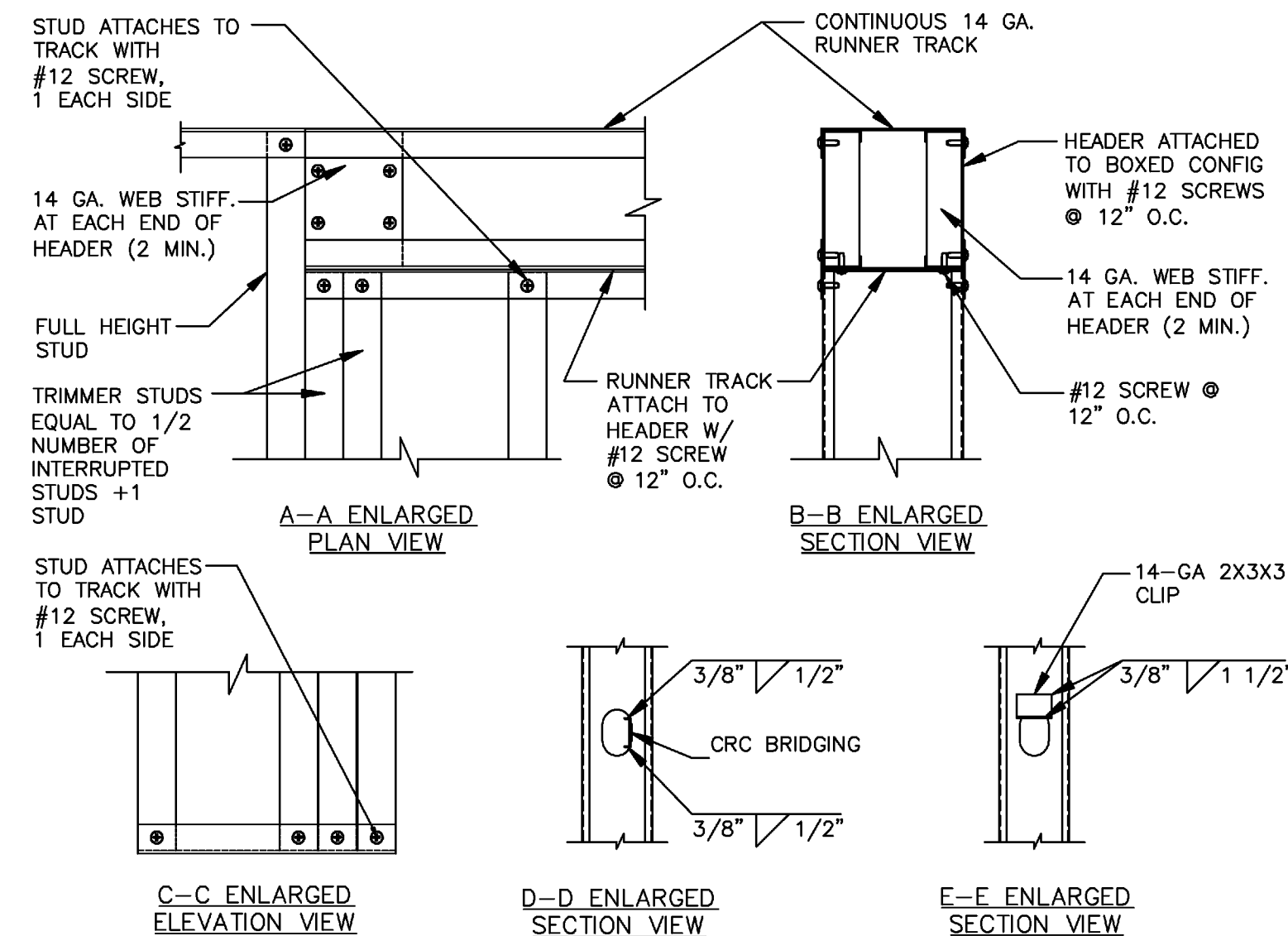
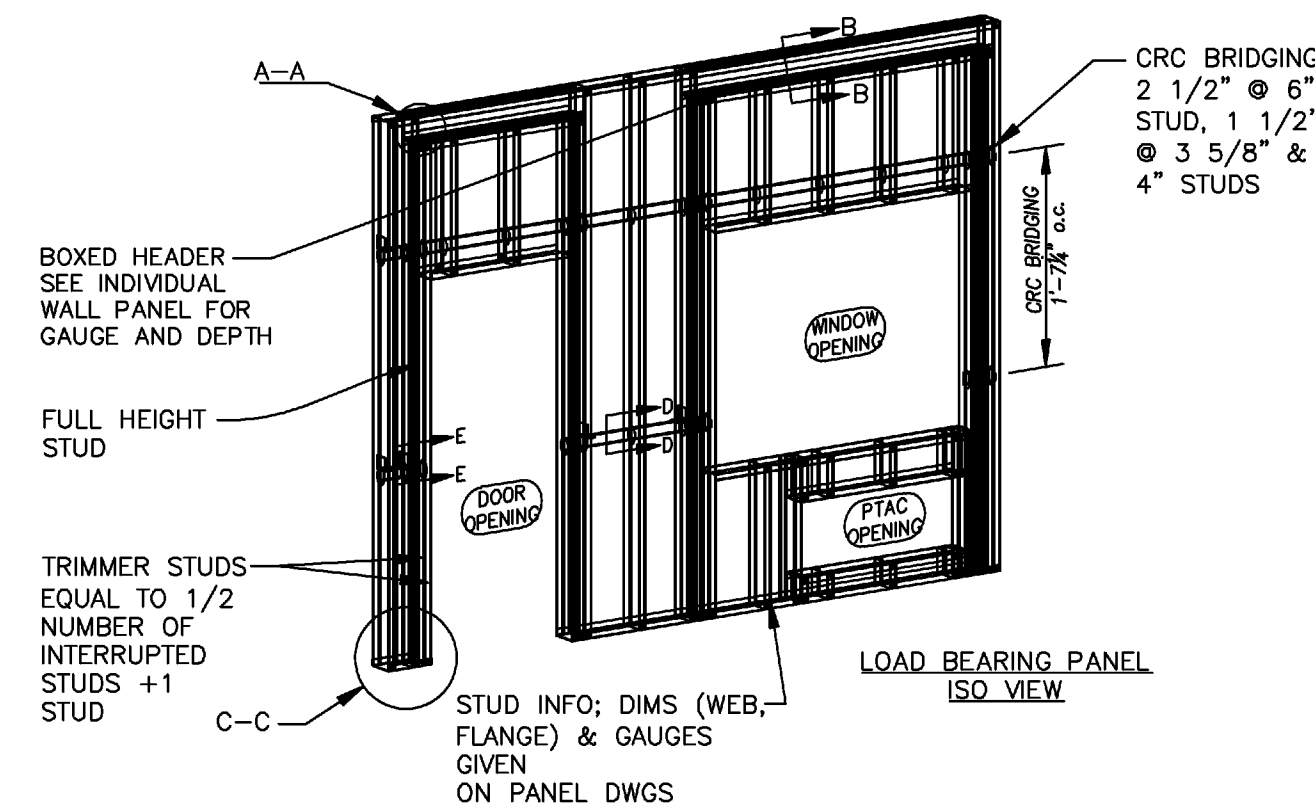


STUD - TRACK CONNECTION OF PANEL & TRACK ATTACHMENT TO SLAB DETAIL
NTS

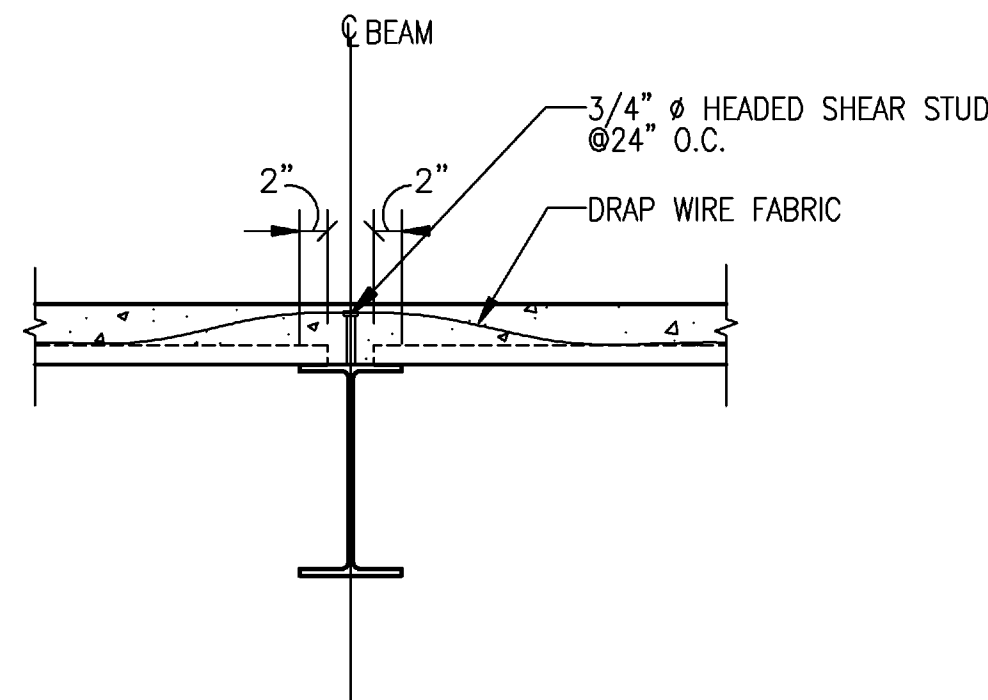


BRIDGING COLD-ROLLED CHANNEL WITH CLIP ANGLE
NTS

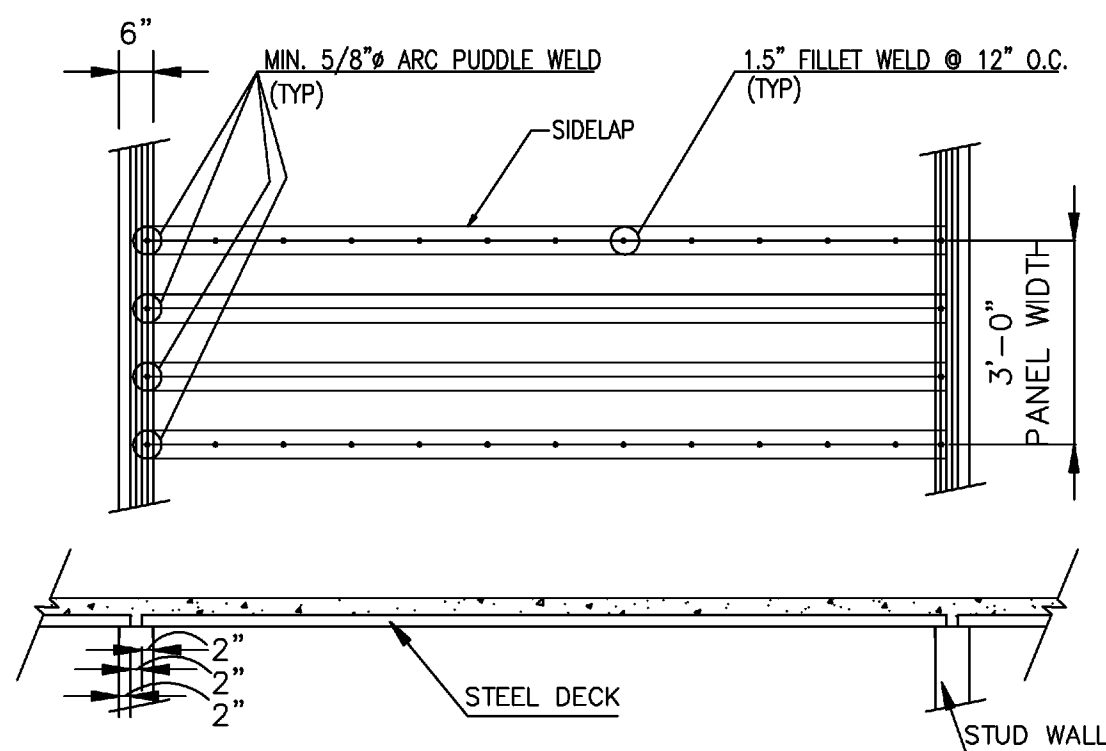
WALL ISOMETRIC
NTS



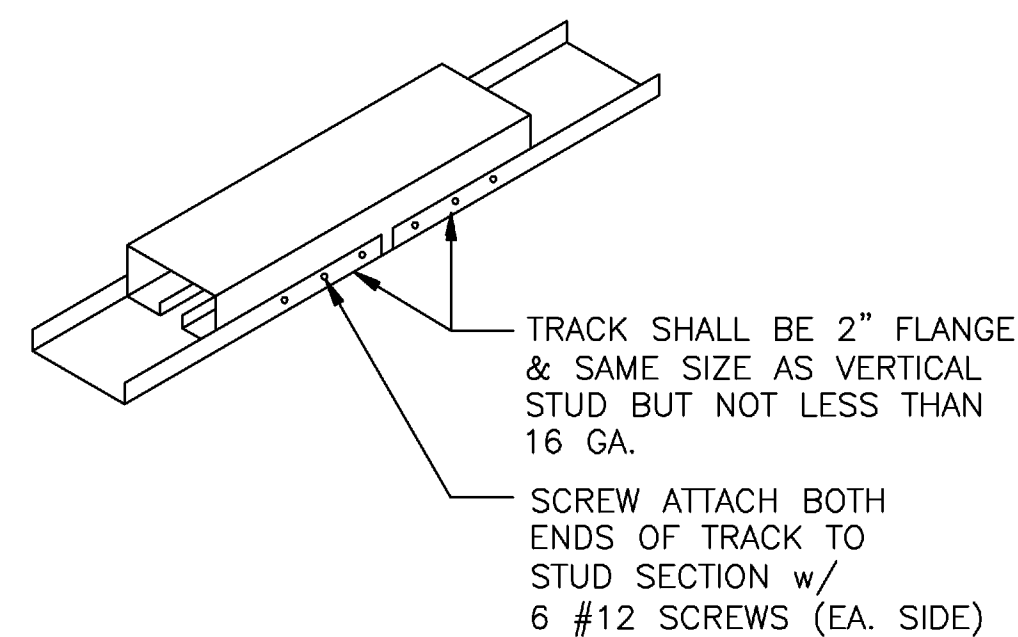
WALL DETAILS
NTS



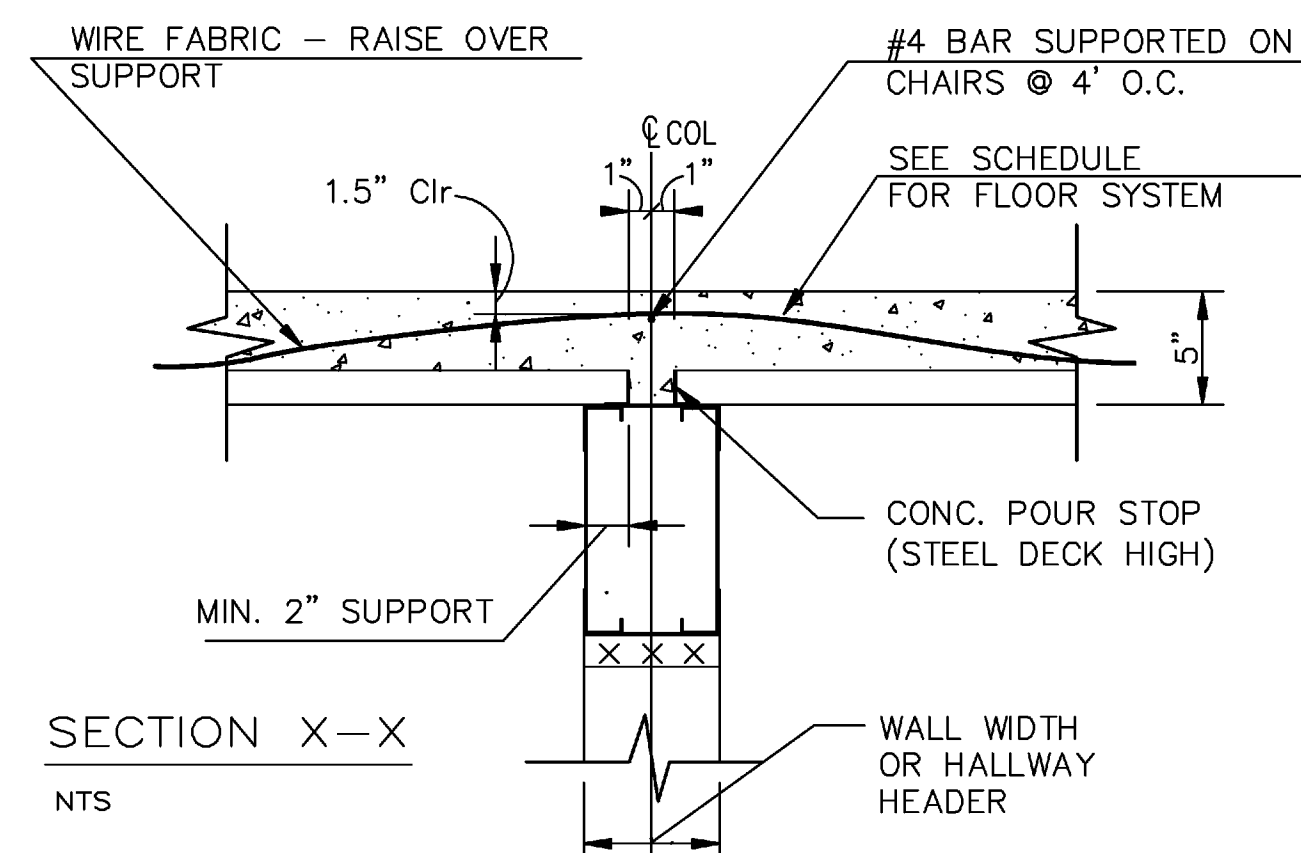
TYPICAL STUD PLACEMENT ON BEAMS
NTS



DECK ANCHORAGE TO SUPPORT WALL AND SIDELAP
NTS

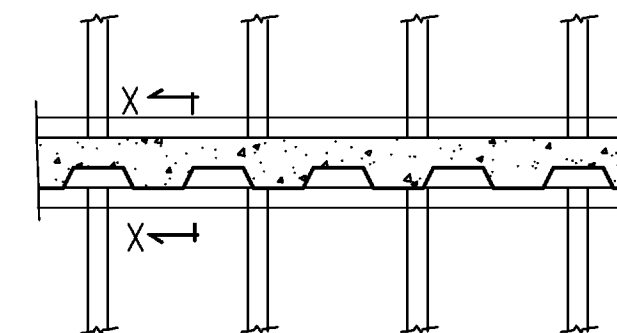


TYPICAL TRACK SPLICE DETAIL
NTS



SECTION X-X
NTS

(N+1) st FLOOR
N= 1,2,3 etc.
Nth FLOOR



INSTALL PANELIZED STUD WALLS SUCH THAT STUDS ARE ALIGNED FROM FLOOR TO FLOOR AS SHOWN HERE.

STUD ALIGNMENT DETAIL
NTS

AURORA ENGINEERING, INC.

JAYANT S. PATEL, Ph.D., P.E.
130 Main Road, Huntsville, AL 35811
PHONE: (256) 852-3098 FAX: (256) 851-0686
aurora@aretnet.net

COURTYARD MARIOTT

RIVERWIND DRIVE
PEARL, MISSISSIPPI

SHEET TITLE
DETAILS

PROJECT:

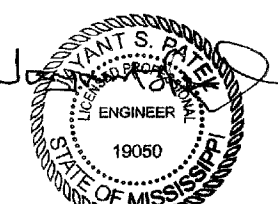
DRAWN: JSP

DATE: 07/26/11

SHEET NO.

S1.1

TOTAL SHEETS: 2 OF 10



09/18/11