

# notes and symbols

| architectural plan symbols                 |   |  |
|--|---|--|
| room tag:<br>room name<br>room number      | elevation tag:<br>elevation ref.<br>sheet ref.  |  |
| section tag:<br>section ref.<br>sheet ref. | detail tag:<br>detail ref.<br>sheet ref.  |  |
| window type:<br>hardware type              | door type:<br>door sched. to legend<br>hardware type  |  |
| ALIGN                                      | Core drill locations (upper floors) or trench stub up (first floor) are shown for design intent only. Dimensions are to center line of core drill/stub up. Coordinate with electrical drawings for device selection.  |  |
| 5LB  | S1B, ABC fire extinguisher wall mounted at not less than 34" AFF.   |  |
| FEC  | Semi-recessed fire extinguisher cabinet with maximum projection from wall of 4". Mount bottom of cabinet not less than 34" AFF, and top of cabinet shall not exceed 60" AFF. Provide S1B, ABC type fire extinguisher. |  |

## architectural plan general notes

All dimensions are from face of finish to face of finish unless noted otherwise.

Coordinate stud size and gauge necessary for height of wall, as well as for structural, mechanical, plumbing, or electrical clearance prior to start of construction. Any discrepancies with layout as dimensioned shall be coordinated immediately with architect.

Reinforce metal stud construction with fire-resistant wood blocking at all locations where wall cabinets, shelving, grab bars, accessories, signs, etc. as required by construction.

Where new gypsum board partitions are a continuation of an existing partition or column encasement, the face of the new gypsum board shall be aligned with the face of the existing surface. Where a new gypsum board partition is shown intersecting a column encasement, the centerline of the wall shall be centered on the column encasement. Where a one hour partition is shown as a continuation of a two-hour partition or column encasement, the face of the gypsum board shall be aligned. Studs shall be offset and additional layers of gypsum board shall be provided as required to provide fire alignment of gypsum board.

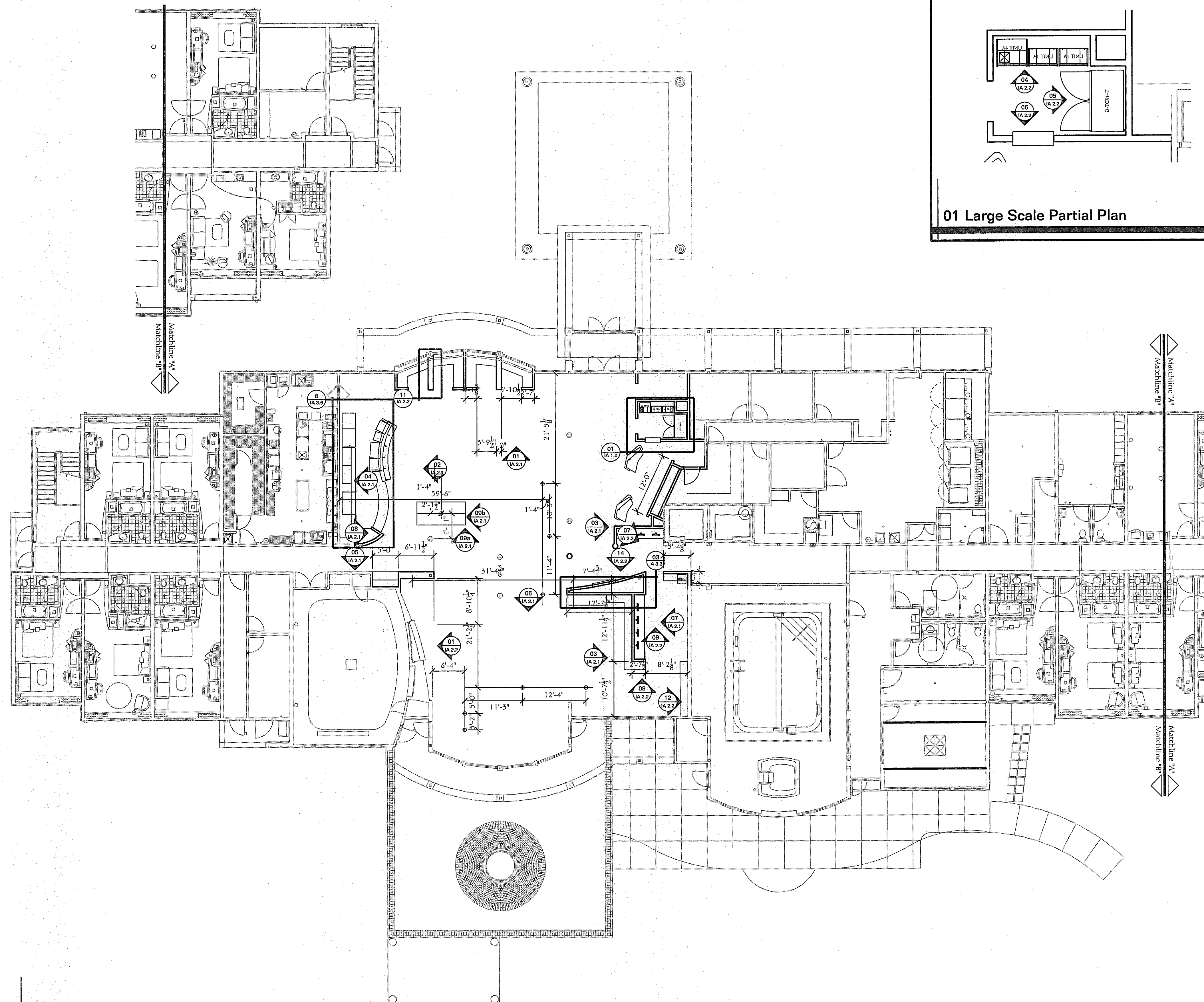
Recessed items (greater than 16 sq. in.) in rated and/or smoke walls, including elec. panels, elec. ducts, med. gas valve boxes, fire ext. cabinets, etc. shall be backed w/ 5/8" type "x" gyp. bd to maintain rating for wall.

Provide 1'-0" clear floor space at the push side of every door; provide 1'-6" clear at the pull side of every door.

# keynotes

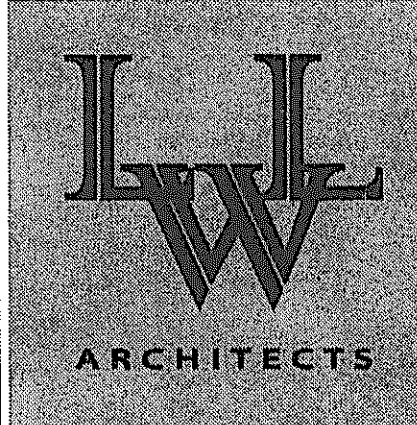
Contractor shall perform the work indicated by these notes in areas designated on the plan specific keynote number.

- 1
- 2
- 3
- 4
- 5



Architectural Floor Plan (Notes & Dimensions)

01 Large Scale Partial Plan



803 S. MOUNT MORIAH  
SUITE 100B  
MEMPHIS, TN 38117  
(901) 683-7175 p.  
(901) 683-2385 f.  
llw@llwarchitects.com

| NO. | ISSUED | DATE |
|-----|--------|------|
|     |        |      |
|     |        |      |
|     |        |      |
|     |        |      |
|     |        |      |

COPYRIGHT BY LLW ARCHITECTS, INC.  
WARNING: UNAUTHORIZED COPYING VIOLATES  
U.S. COPYRIGHT LAWS AND WILL SUBJECT THE  
VIOLATOR TO LEGAL PROSECUTION.

## CONSULTANTS

STRUCTURAL:  
S.K. INTERNATIONAL  
(256) 852-3098

MECHANICAL:  
HARRISON FRENCH  
(479) 273-7780

PLUMBING  
HARRISON FRENCH  
(479) 273-7780

ELECTRICAL:  
HARRISON FRENCH  
(479) 273-7780

SEAL



VICKSBURG,  
MISSISSIPPI

## SHEET NAME

Interior Architectural  
Floor Plan (Notes &  
Dimensions)

## DATE

8/26/08

## DRAWN BY

## CHECKED BY

## FILE NAME

## SCALE

As Noted

## PROJECT NO.

1505

## DRAWING

IA1.0