



803 S. MOUNT MORIAH
SUITE 100B
MEMPHIS, TN 38117
(901) 683-7175 p.
(901) 683-2385 f.
llw@llwarchitects.com

NO.	ISSUED	DATE

COPYRIGHT BY LLW ARCHITECTS, INC.
WARNING: UNAUTHORIZED COPYING VIOLATES
U.S. COPYRIGHT LAWS AND WILL SUBJECT THE
VIOLATOR TO LEGAL PROSECUTION.

CONSULTANTS

STRUCTURAL:
S.K. INTERNATIONAL
(256) 852-3098

MECHANICAL:
HARRISON FRENCH
(479) 273-7780

PLUMBING
HARRISON FRENCH
(479) 273-7780

ELECTRICAL:
HARRISON FRENCH
(479) 273-7780

SEAL



VICKSBURG,
MISSISSIPPI

SHEET NAME

Reflected Ceiling Plan

DATE

8/26/08

DRAWN BY

CHECKED BY

FILE NAME

SCALE

As Noted

PROJECT NO.

1505

DRAWING

notes & symbols

- plan symbols**
- room tag:
conference
room name
room number
- elevation tag:
elevation ref.
sheet ref.
- section tag:
section ref.
sheet ref.
- detail tag:
detail ref.
sheet ref.
- ALIGN
Align finished face of partition
with surfaces indicated.
- 01
Plan or elevation keynote
- Existing construction
to remain
- Existing construction
to be demolished
- 9'-0" ceiling height tag
AC-1
ceiling height reference
ceiling type reference
- hatch designates area not in
contract or existing
- hatch designates drywall soffit
- suspended acoustical
ceiling grid
- recessed 2' X 4' fluorescent
fixture
recessed 2' X 4' fluorescent
fixture with emergency circuit
- recessed 2' X 2' fluorescent
fixture
recessed 2' X 2' fluorescent
fixture with emergency circuit
- fluorescent strip fixture
- recessed downlight (EM
indicates emergency ballast)
- recessed incandescent wall
washer
- recessed incandescent eyeball
downlight
- surface mounted fixture
- ceiling surface mounted
pendant fixture
- light track and fixtures
- recessed projection screen
- wall mounted sconce fixture
- exit sign
(arrow if directional required)
- wiring arc - indicates switching
of fixtures/devices.
- single pole light switch
- three way light switch
- dimmer switch
- projection screen switch
- GFI
ground fault interrupt receptacle
location
- R
indicates electrical component
to be relocated
- E
indicates existing electrical
component to remain
- junction box above ceiling

keynotes

reflected ceiling plan keynotes

Contractor shall perform the work indicated
by these notes in areas designated on the
plan specific keynote number.

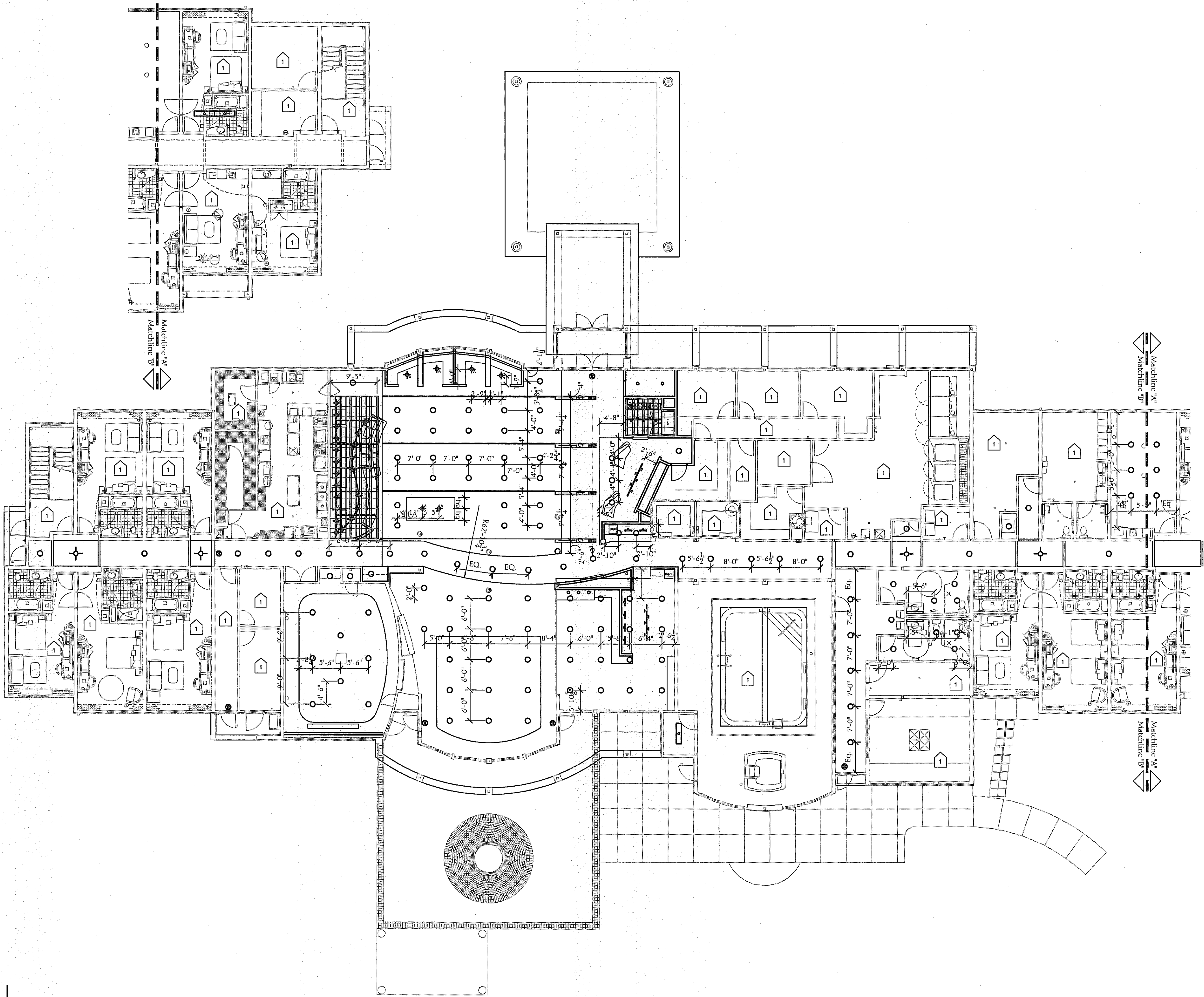
See architectural and engineering
drawings for lighting layout in this
space.

reflected ceiling plan general notes

- Ceiling elements are shown for layout
and design intent only. Refer to
architectural and engineering drawings
for additional information.
- Verify that access panels of type
specified are installed in walls and
non-accessible type ceilings where
service or adjustment to mechanical,
plumbing, or electrical items may be
required. Access panels shall be the fire
rated type equal to the rating of the
wall or ceiling in which they occur,
coordinate the locations and sizes with
the architect before installation.
- Ceiling height as determined by
architect's documents.

light fixture schedule

- type of fixture: recessed
manufacturer:
style/model #:
finish:
lamp:
- type of fixture: surface mtd
manufacturer:
style/model #:
finish:
lamp:
- type of fixture: pendant
manufacturer:
style/model #:
finish:
lamp:
- type of fixture: track-head
manufacturer:
style/model #:
finish:
lamp:
- type of fixture: track pendant
manufacturer:
style/model #:
finish:
lamp:
- type of fixture: track
manufacturer:
style/model #:
finish:
lamp:
- type of fixture: sconce
manufacturer:
style/model #:
finish:
lamp:



Reflected Ceiling Plan

8' 4' 0' 8'

IA1.1