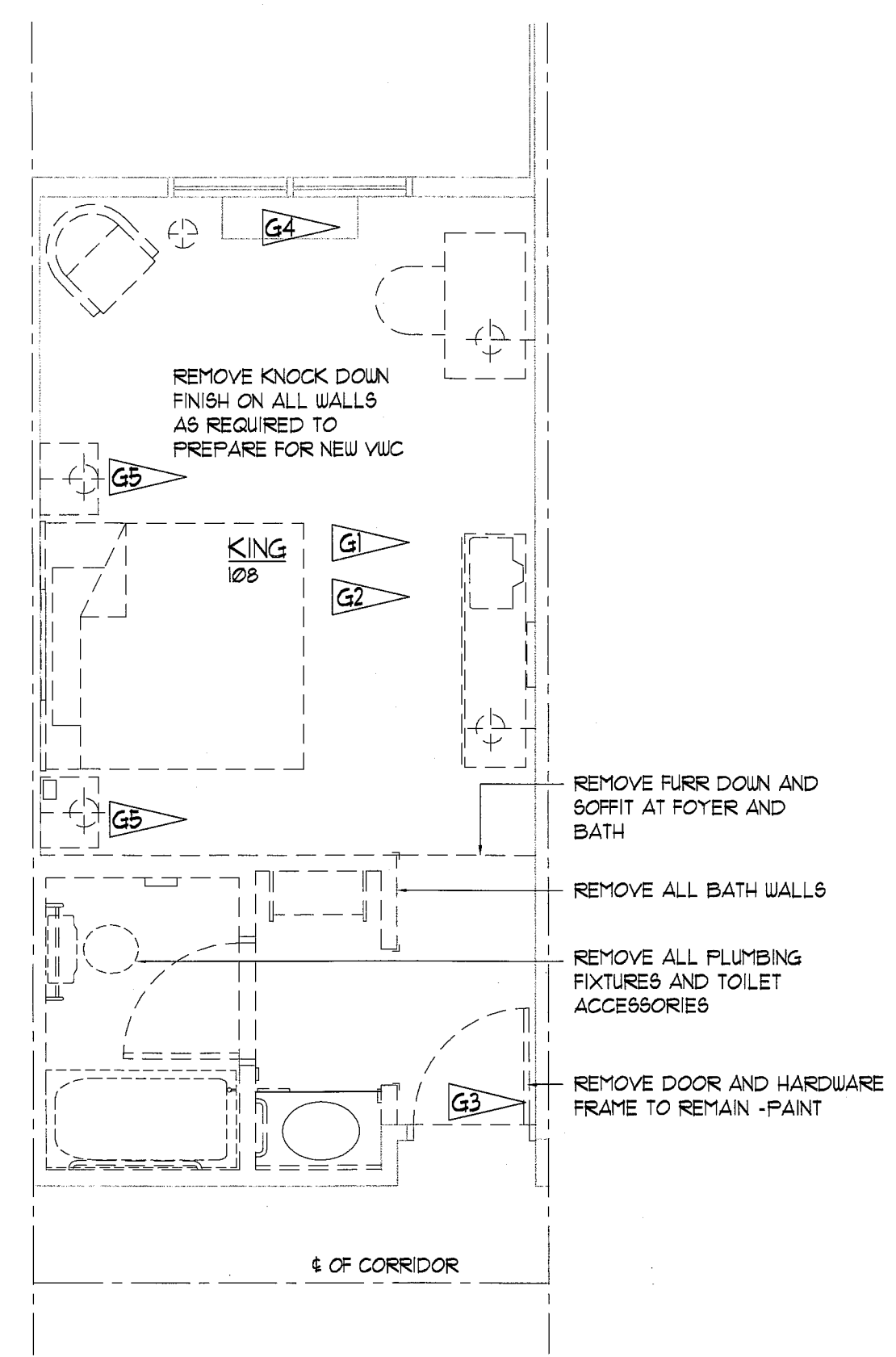
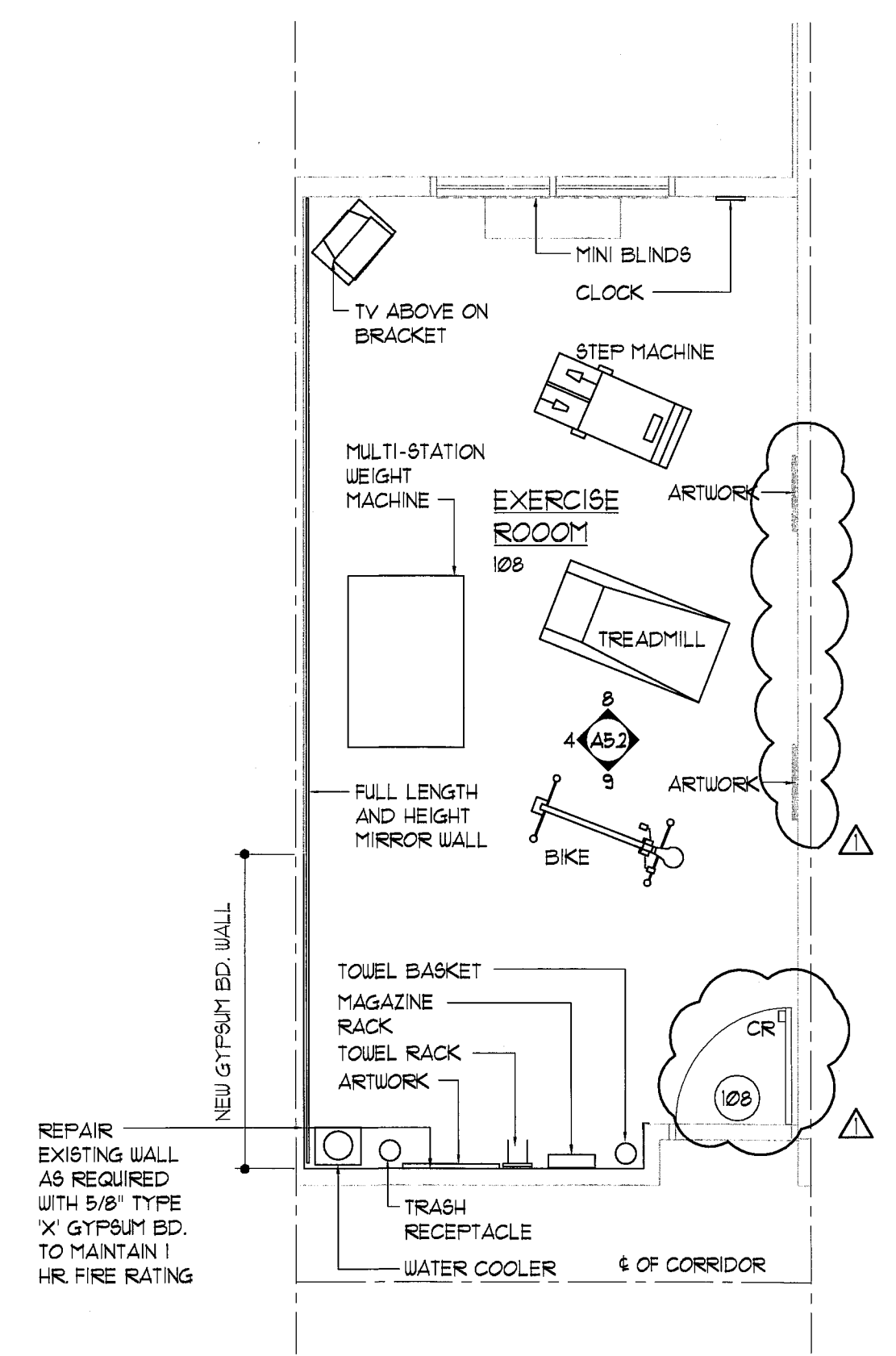


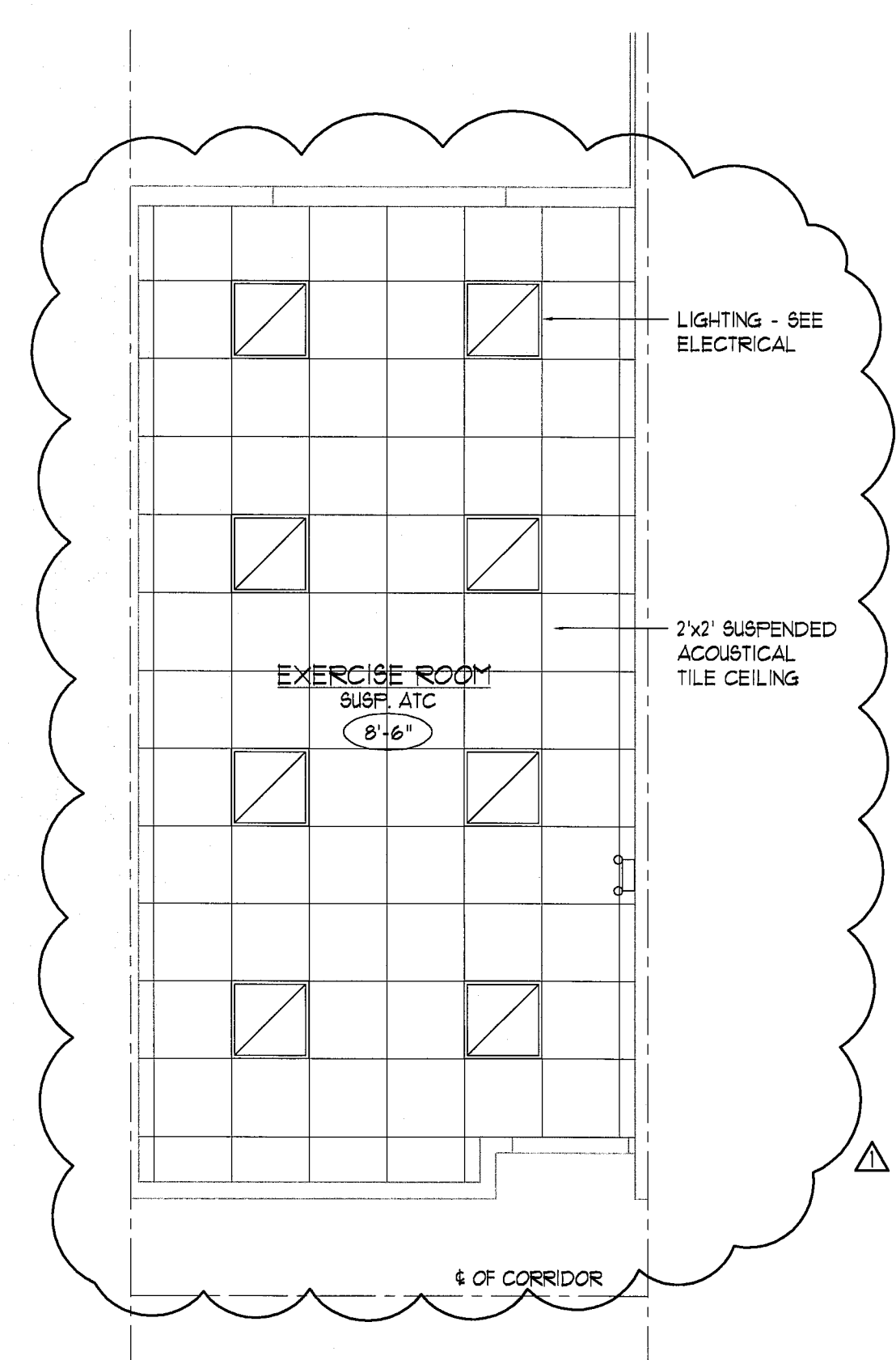
COPYRIGHT BY LLW ARCHITECTS, INC. WARNING: UNAUTHORIZED COPYING VIOLATES U.S. COPYRIGHT LAWS AND WILL SUBJECT THE VIOLATOR TO LEGAL PROSECUTION.



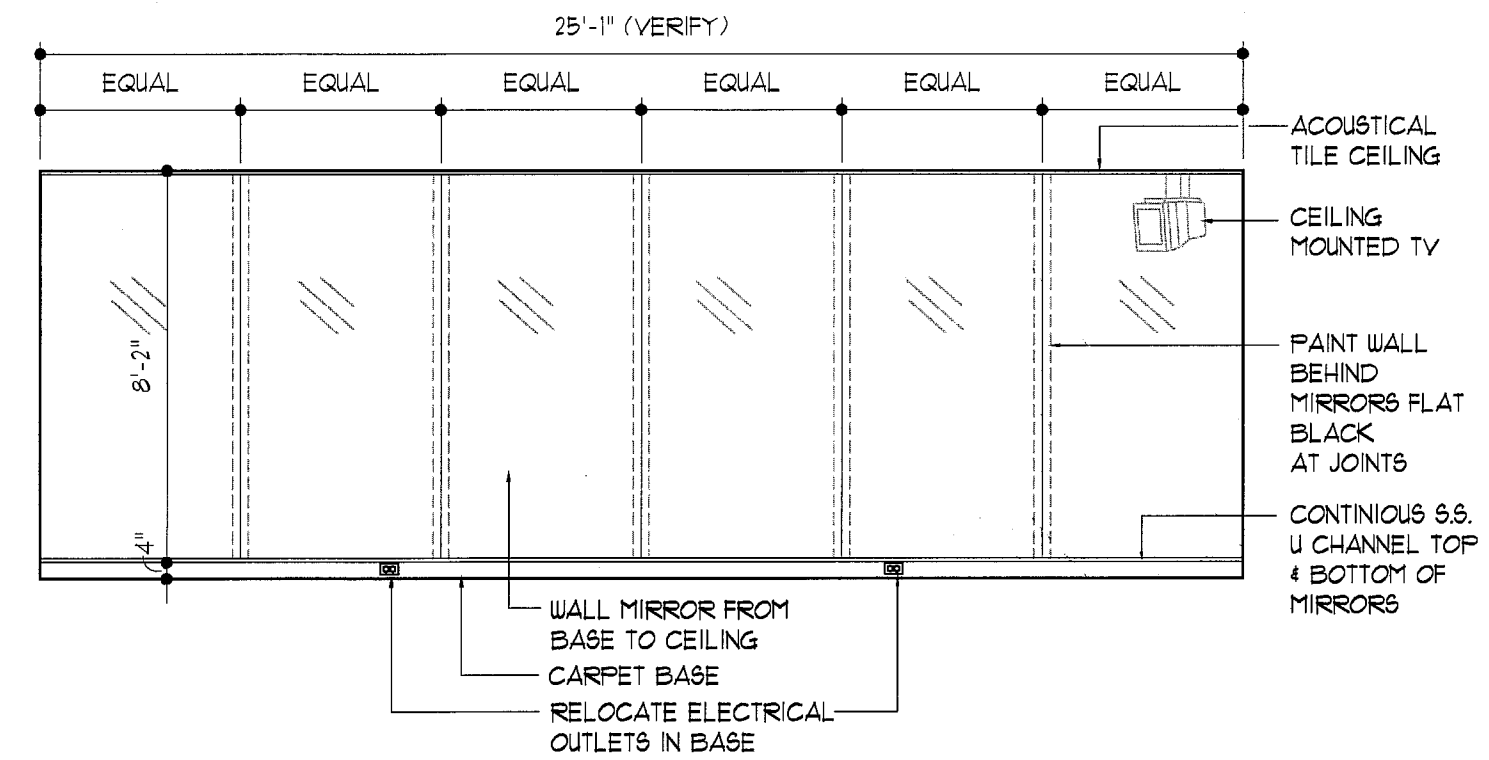
5 Plan Detail King 108 Demolition Plan Scale: 1/4" = 1'-0"



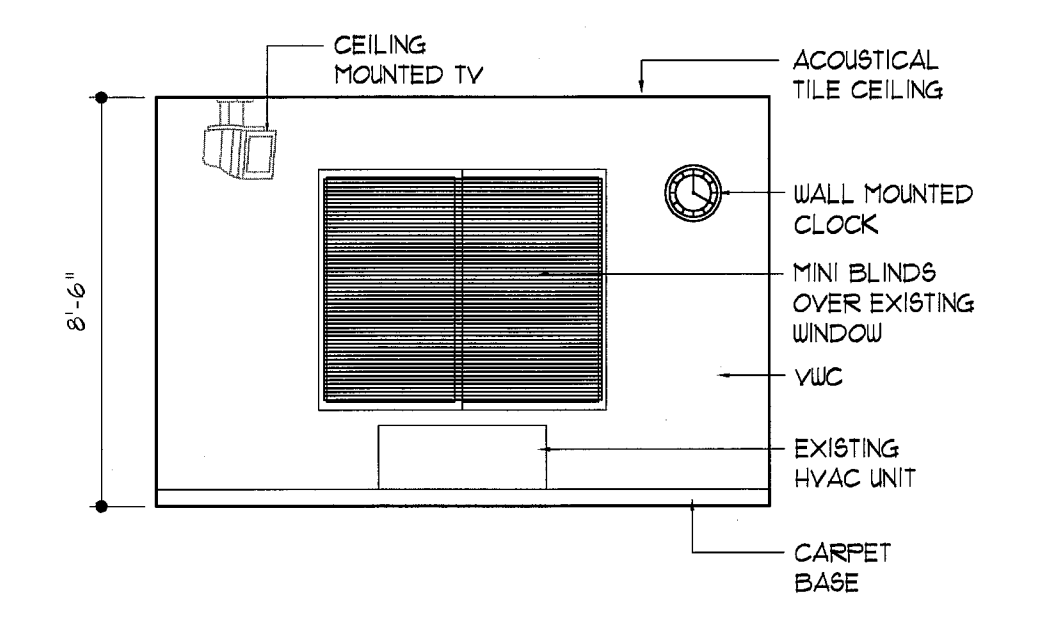
6 Plan Detail Exercise Room Scale: 1/4" = 1'-0"



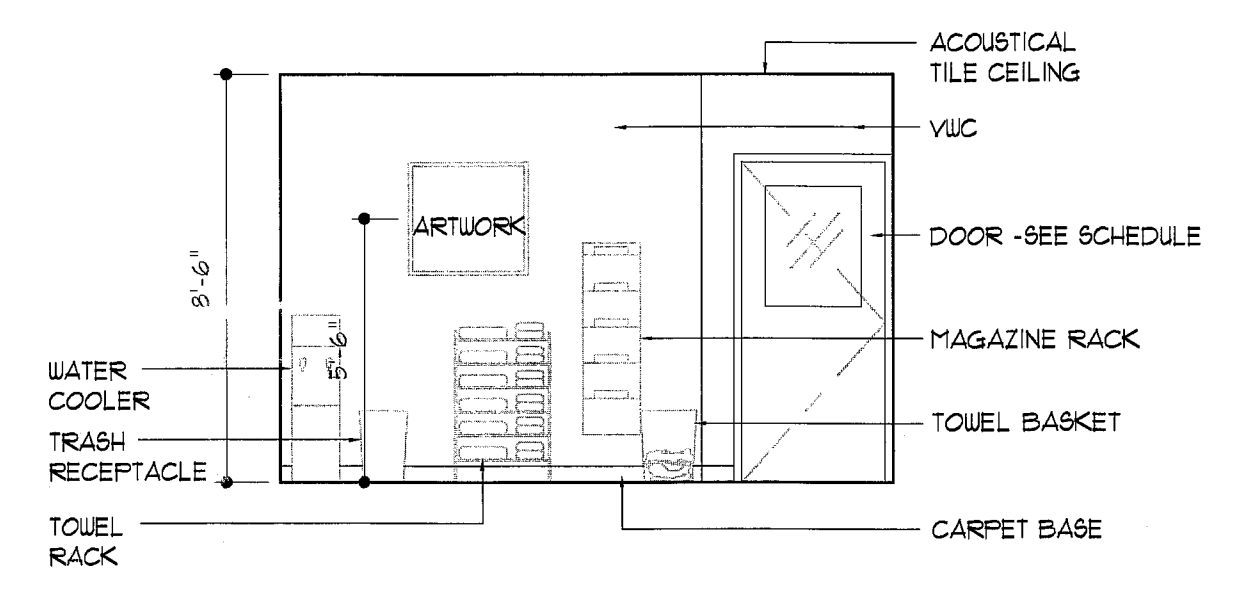
7 Plan Detail Exercise Room Ceiling Scale: 1/4" = 1'-0"



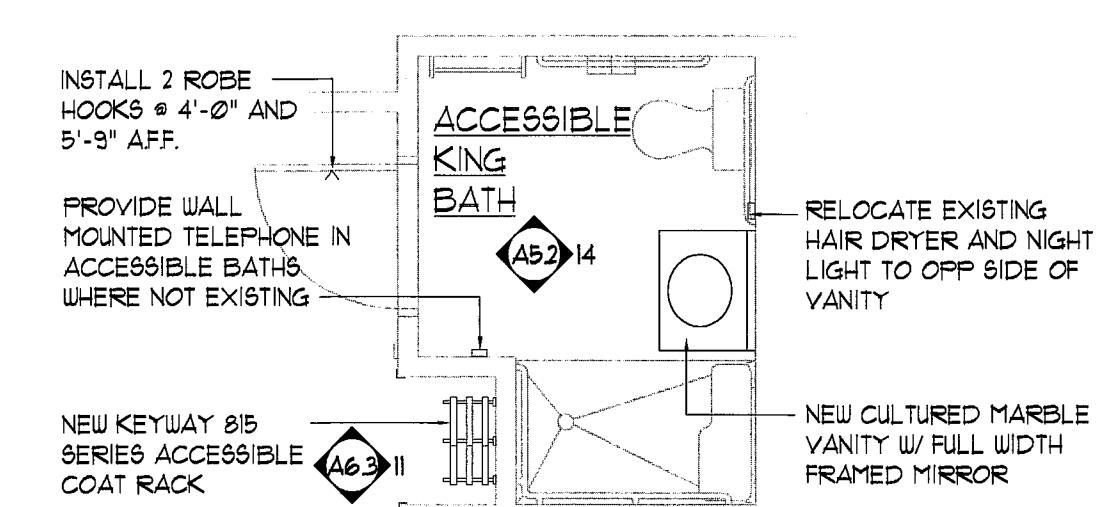
4 Elevation Detail Exercise Room Mirror Wall Scale: 1/4" = 1'-0"



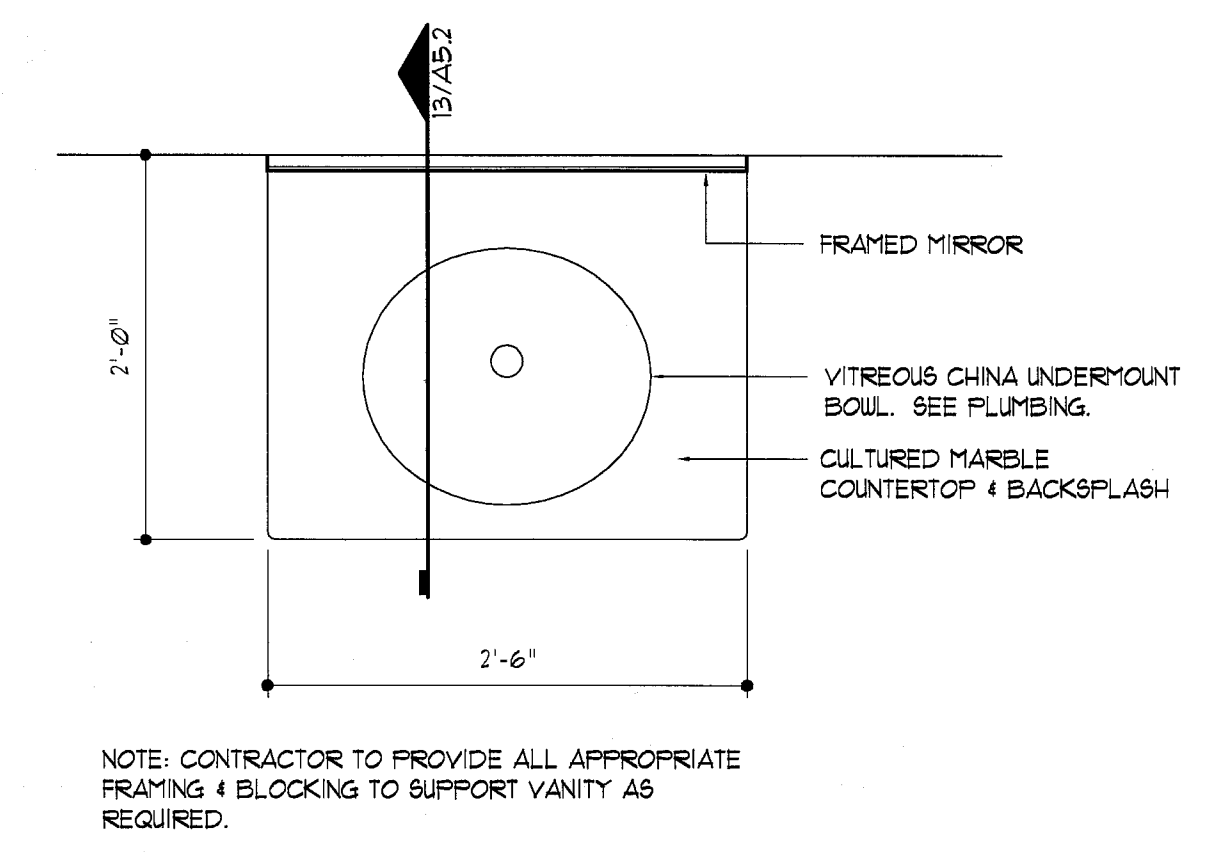
8 Elevation Detail Exercise Room Scale: 1/4" = 1'-0"



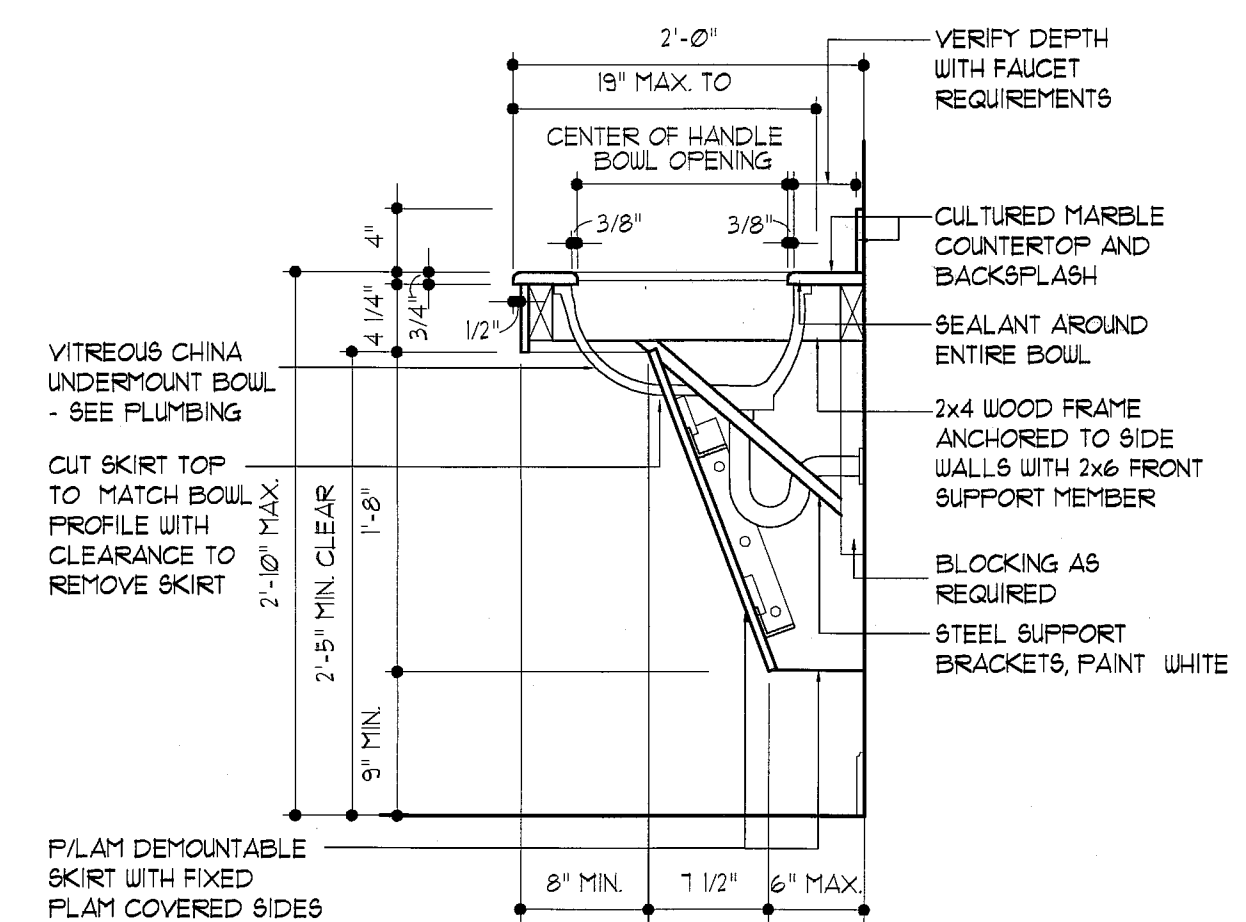
9 Elevation Detail Exercise Room Scale: 1/4" = 1'-0"



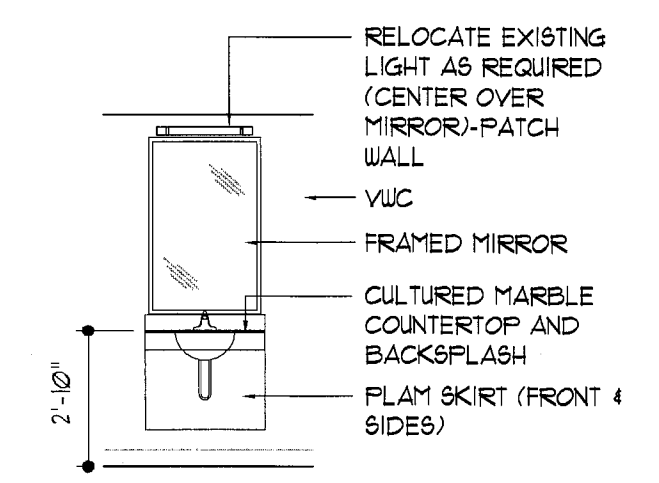
10 Plan Detail Acc. King w/ R.I.S. (Acc King w/ Tub Sim.) Scale: 1/4" = 1'-0"



11 Plan Detail Accessible King Vanity Scale: 1" = 1'-0"



13 Section Detail Accessible Vanity Scale: 1" = 1'-0"



14 Elevation Detail Accessible Vanity Scale: 1/4" = 1'-0"

DEMOLITION LEGEND	
	TO BE REMOVED
	EXISTING TO REMAIN

KEY LEGEND	
	WALL TYPE KEY (SEE SHEET A3.1)
	ROOM FINISH KEY (SEE SHEET A3.1)
	DOOR KEY (SEE SHEET A3.1)
	ELEVATION KEY (SEE SHEET NUMBER INSIDE OF KEY)
	WINDOW KEY (SEE SHEET A3.1)

- TYPICAL GUESTROOM DEMOLITION NOTES:**
- G1 REMOVE ALL FURNITURE
 - G2 REMOVE CARPET & CARPET BASE
 - G3 REMOVE THRESHOLD
 - G4 REMOVE DRAPERY
 - G5 REMOVE WALL MOUNTED LIGHT FIXTURES (PATCH AND REPAIR WALL)
 - G6 REMOVE LAVATORY AND MIRROR (ACCESSIBLE ROOMS ONLY)
 - G7 REMOVE COAT RACK (ACC. AND KING SUITE ROOMS ONLY)

- GUESTROOM FF&E NOTES:**
1. PROVIDE ALL NEW FURNITURE AND FURNISHINGS PER STANDARD TO INCLUDE SOFT SEATING, LIGHTING, ARTWORK AND DRAPERY.
 2. PROVIDE 9" MATTRESS PER NEW STANDARD.
 3. PROVIDE NEW 25" TELEVISION MOUNTED ON SWIVEL FOR ALL GUESTROOMS.
 4. TOUCH UP CABEGOODS TO LIKE-NEW CONDITION.
 5. ALL CABEGOOD FULLS ARE TO MEET ACCESSIBILITY STANDARDS. REPLACE AS REQUIRED.
 6. KING GUESTROOM LOUNGE CHAIRS ARE TO HAVE MATCHING OTTOMANS, WHERE SPACE ALLOWS.
 7. PROVIDE 3 TRACK DRAPERY SYSTEM PER STANDARDS WITH OVER-DRAPE/BLACKOUT LINING, SHEERS AND SIDE PANELS.
 8. PROVIDE 25" TELEPHONE CORDS IF NOT EXISTING.
 9. PROVIDE 2 TELEPHONES IN ALL KING SUITE ROOMS.
 10. PROVIDE FULL LENGTH FRAMED MIRRORS (IF NOT EXISTING) IN ALL KING SUITE ROOMS.
 11. HAIR DRYERS AND COFFEE SERVICE ARE REQUIRED IN ALL KING SUITE ROOMS.
 12. INSTALL NEW RUBBER THRESHOLD AT ALL ENTRY DOORS AND CONNECTING DOORS TO MATCH WIDTH OF EXISTING FRAME.
 13. PROVIDE SPLIT CLOSET RACK IN ACCESSIBLE GUESTROOM CLOSETS.
 14. PROVIDE ERGONOMIC DESK CHAIR IN ACCESSIBLE GUESTROOMS.
 15. REPLACE ALL LAVATORY FAUCETS AT ALL GUESTROOM BATHS. (MUST HAVE HOT & COLD WATER INDICATORS)
 16. REMOVE AND REPLACE ANY HARDWARE IN BATHS THAT IS BENT OR DAMAGED. DEEP CLEAN ALL ITEMS TO REMAIN.
 17. REPLACE ANY GUESTROOM PTAC UNITS THAT ARE NOT IN GOOD WORKING ORDER.
 18. PROVIDE MINI-HORN'S AND SPRINKLERS IN ALL GUESTROOMS WHERE THEY DO NOT EXIST.
 19. CONFIRM ALL SMOKE DETECTORS MEET MARriott INTERNATIONAL FIRE PROTECTION STANDARDS, MODULE 14.
 20. ALL OUTSIDE CORNERS OF INTERIOR WALLS TO HAVE FULL HEIGHT OPAQUE CORNER GUARDS FROM TOP OF BASE TO CEILING.
 21. SECURITY CLEAT ALL ARTWORK TO WALLS.
 22. HIGH-SPEED INTERNET SERVICE MUST BE PROVIDED AT ALL GUESTROOMS.
 23. TOUCH UP ALL EXISTING GUESTROOM DOORS TO LIKE NEW CONDITION AND REPAIR ALL DAMAGED AREAS.
 24. CLEAN EXISTING FLOOR TILE IN BATHS TO LIKE NEW CONDITION. RAKE AND RE-GROUT AS REQUIRED.
 25. EXISTING BATH EXHAUST FAN NOISE SHALL NOT EXCEED 15 SONES. REPLACE FANS AS REQUIRED.