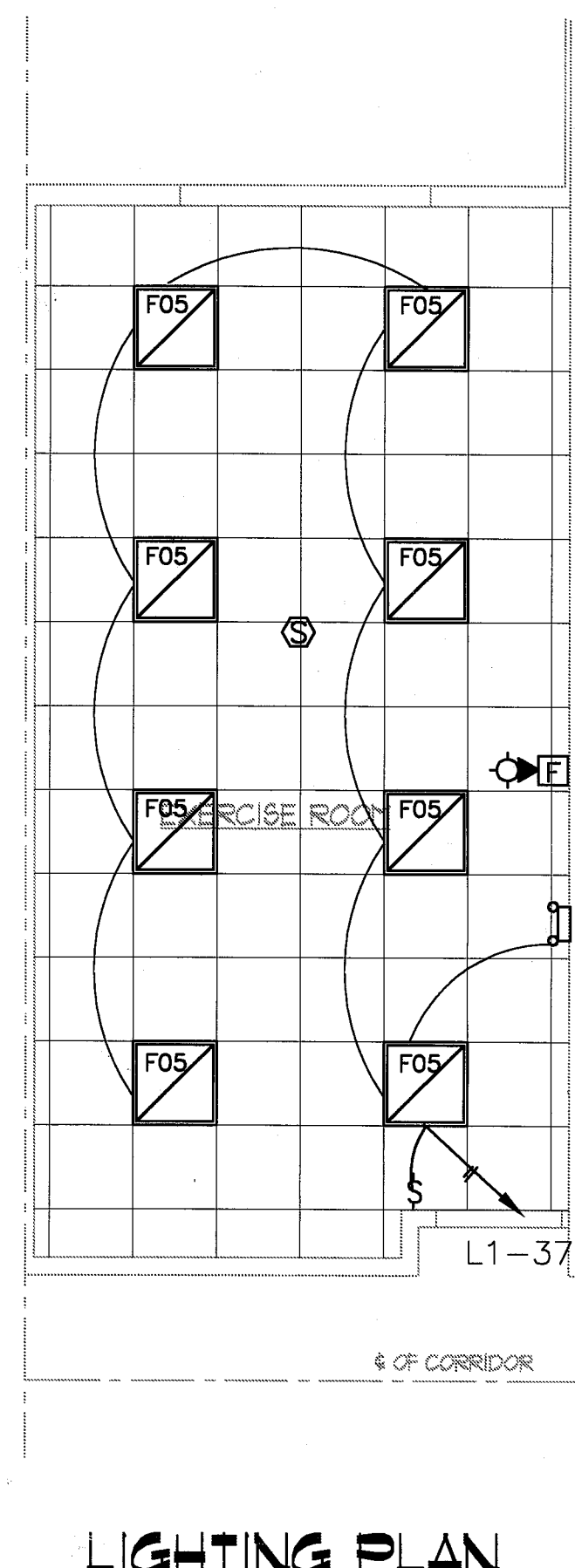
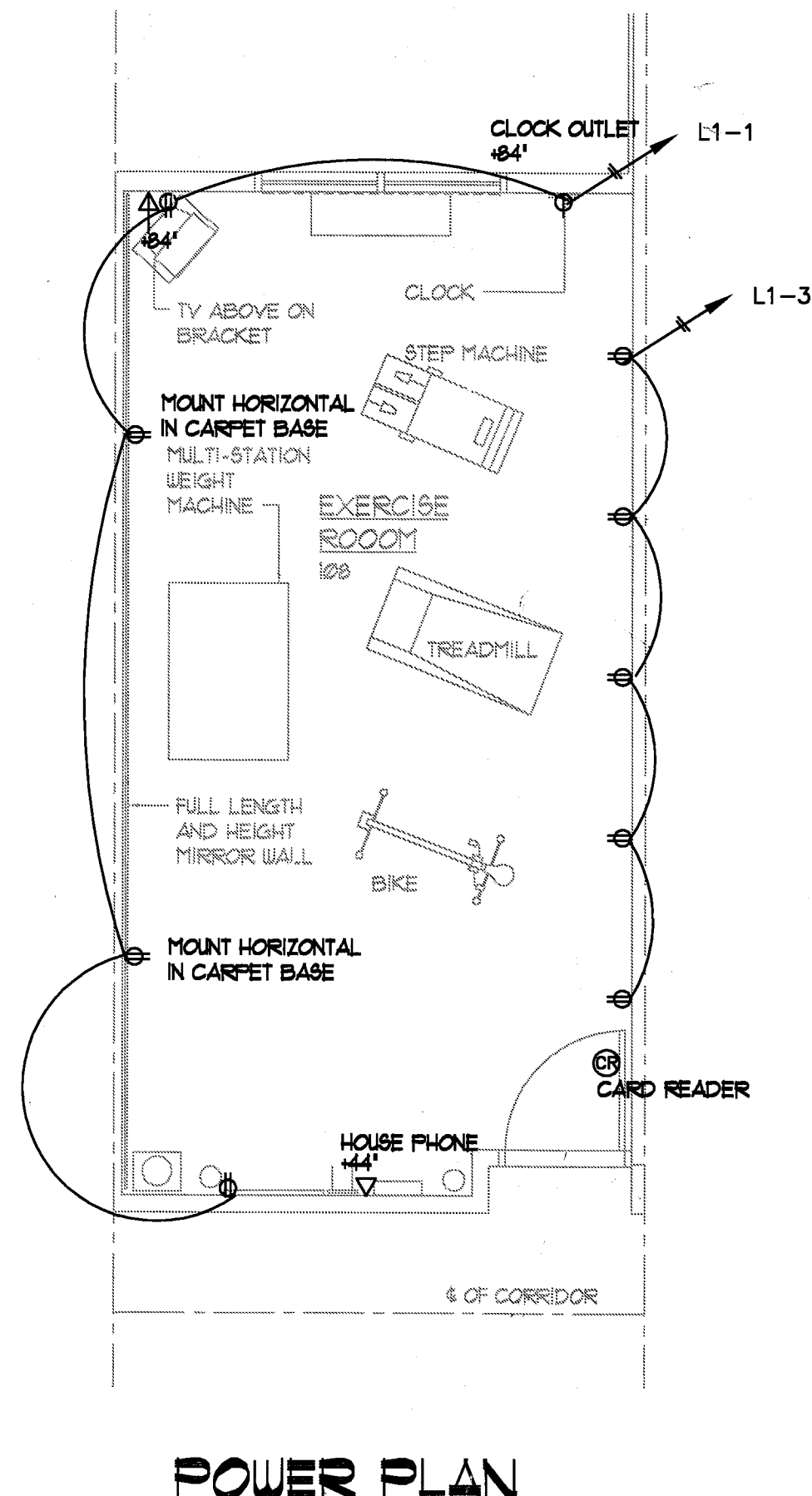
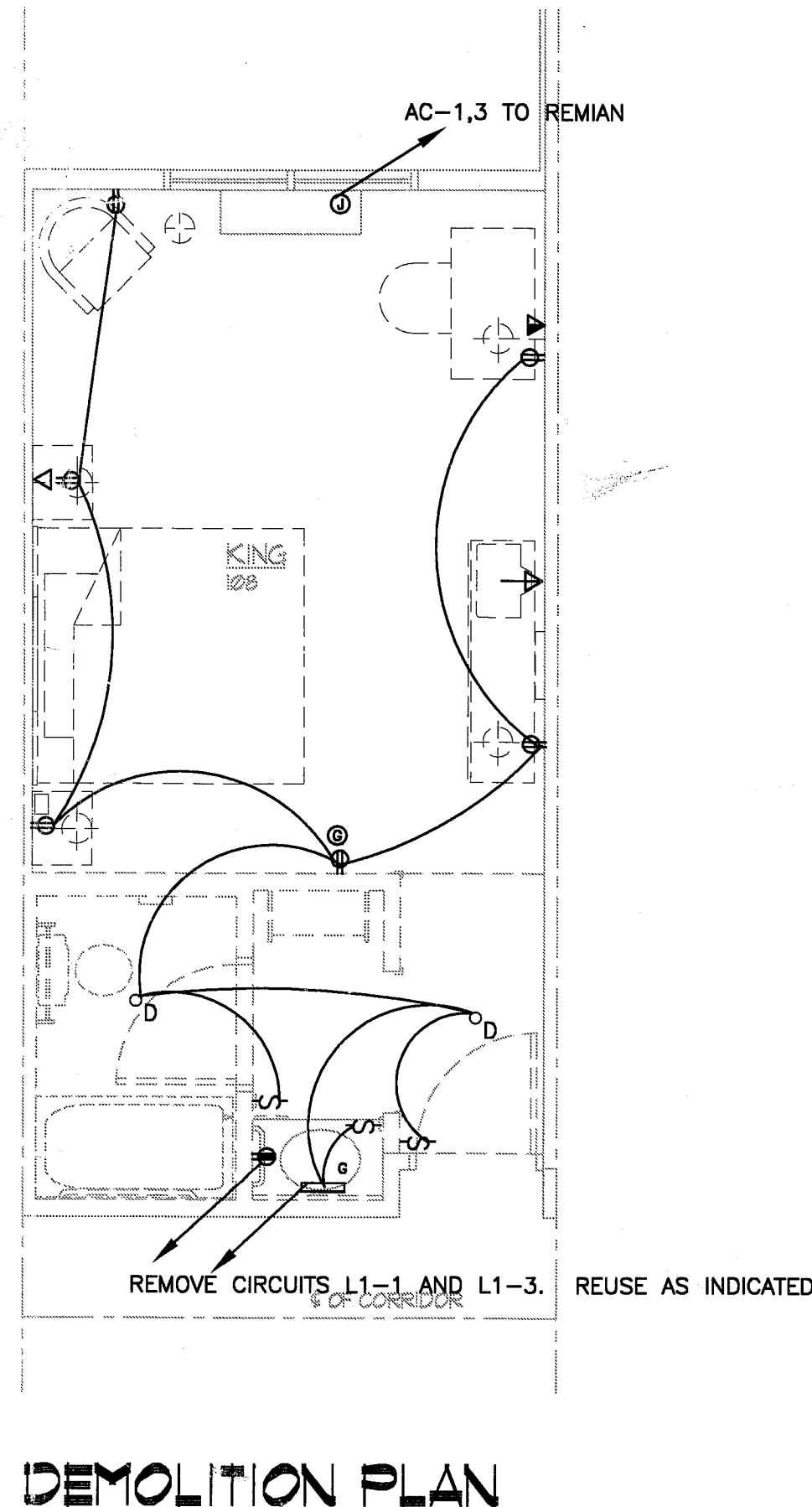


A ROOMS AS INDICATED - SPECIAL KING TO KING SUITE

- ELECTRICAL NOTES**
1. REMOVE ALL EXISTING ELECTRICAL DEVICES WITHIN SIX (6) GUESTROOMS INDICATED FOR DEMOLITION.
 2. REMOVE ALL LIGHT FIXTURES WITHIN SIX(6) GUESTROOMS DESIGNATED FOR DEMOLITION, OTHER THAN RECESSED CAN WITHIN BATH. CLEAN AND RELAMP RECESSED CAN FIXTURE WITHIN BATH.
 3. REMOVE ALL CONDUIT AND WIRING FOR GUESTROOM CIRCUITS TO POINT OF HOMERUN. HOMERUN MAY BE RE-USED FOR NEW GUESTROOM CIRCUITS.
 4. HVAC CIRCUIT SHALL REMAIN IN-PLACE.
 5. REFER TO FIXTURE SCHEDULE FOR ALL NEW LIGHT FIXTURES. FIXTURES SHALL BE AS APPROVED BY MARRIOTT.
 6. CONTRACTOR SHALL PROVIDE CONDUITS AND JUNCTION BOXES AS NEEDED FOR OWNER'S COMMUNICATIONS VENDOR TO INSTALL NEW HIGH-SPEED INTERNET, VOICE, AND MATV SERVICE TO EACH OF THE RENOVATED ROOMS.
 7. CONTRACTOR SHALL CONFIRM THE THREE(3) EXISTING ROOM CIRCUITS - ONE EACH FOR ROOM, BATH, AND HOSPITALITY SUITE AND SHALL REUSE THOSE CIRCUITS AS INDICATED.
 8. REFER TO SHEET A6.2 FOR DETAILED LOCATIONS OF ELECTRICAL DEVICES AND LIGHTING WITHIN ENTERTAINMENT CENTERS.
 9. REFER TO SHEET A6.3 FOR DETAILED LOCATIONS AND ELEVATIONS OF ELECTRICAL DEVICES FOR REFRIGERATOR/MICROWAVE CABINET.
 10. REFER TO SHEET E07 FOR FIRE ALARM SYSTEM DETAILS. CONTRACTOR SHALL INSTALL A NEW, COMPLETE FIRE ALARM SYSTEM IN ACCORDANCE WITH THE REQUIREMENTS OF NFPA, LOCAL CODES, PROJECT MANUAL SECTION 16720 AND MARRIOTT LIFE SAFETY STANDARDS, MODULE 14.
 11. EXISTING FIRE ALARM SYSTEM SHALL REMAIN IN OPERATION DURING INSTALLATION OF NEW SYSTEM. REFER TO PROJECT MANUAL SECTION 16720.

- ELECTRICAL NOTES**
1. REMOVE ALL EXISTING ELECTRICAL DEVICES WITHIN GUESTROOMS INDICATED FOR DEMOLITION.
 2. REMOVE ALL LIGHT FIXTURES WITHIN GUESTROOMS DESIGNATED FOR DEMOLITION, OTHER THAN RECESSED CAN WITHIN BATH. CLEAN AND RELAMP RECESSED CAN FIXTURE WITHIN BATH.
 3. REMOVE ALL CONDUIT AND WIRING FOR GUESTROOM CIRCUITS TO POINT OF HOMERUN. HOMERUN MAY BE RE-USED FOR NEW GUESTROOM CIRCUITS.
 4. HVAC CIRCUIT SHALL REMAIN IN-PLACE.
 5. REFER TO FIXTURE SCHEDULE FOR ALL NEW LIGHT FIXTURES. FIXTURES SHALL BE AS APPROVED BY MARRIOTT.
 6. CONTRACTOR SHALL PROVIDE CONDUITS AND JUNCTION BOXES AS NEEDED FOR OWNER'S COMMUNICATIONS VENDOR TO INSTALL NEW HIGH-SPEED INTERNET, VOICE, AND MATV SERVICE TO EACH OF THE RENOVATED ROOMS.
 7. CONTRACTOR SHALL CONFIRM THE THREE(3) EXISTING ROOM CIRCUITS - ONE EACH FOR ROOM, BATH, AND HOSPITALITY SUITE AND SHALL REUSE THOSE CIRCUITS AS INDICATED.
 8. REFER TO SHEET A6.2 FOR DETAILED LOCATIONS OF ELECTRICAL DEVICES AND LIGHTING WITHIN ENTERTAINMENT CENTERS.
 9. REFER TO SHEET A6.3 FOR DETAILED LOCATIONS AND ELEVATIONS OF ELECTRICAL DEVICES FOR REFRIGERATOR/MICROWAVE CABINET.
 10. REFER TO SHEET E07 FOR FIRE ALARM SYSTEM DETAILS. CONTRACTOR SHALL INSTALL A NEW, COMPLETE FIRE ALARM SYSTEM IN ACCORDANCE WITH THE REQUIREMENTS OF NFPA, LOCAL CODES, PROJECT MANUAL SECTION 16720 AND MARRIOTT LIFE SAFETY STANDARDS, MODULE 14.
 11. EXISTING FIRE ALARM SYSTEM SHALL REMAIN IN OPERATION DURING INSTALLATION OF NEW SYSTEM. REFER TO PROJECT MANUAL SECTION 16720. UPON COMPLETION OF NEW FIRE ALARM SYSTEM. REMOVE ALL DEVICES RELATED TO EXISTING SYSTEM, PATCH AND REPAIR AS NEEDED.

REFER TO SHEET E07 FOR FIRE ALARM DETAILS, AND SCHEDULES.



B ROOM 118 - KING TO EXERCISE ROOM

LLW Architects, Inc.
803 S. Mount Moriah Suite 100B
Memphis, TN 38117
Business 901-683-7175
Fax 901-683-2385
e-mail: llw@llwarchitects.com

▲ revisions:

▲ seal:

Marriott
FAIRFIELD
INN & SUITES
PEARL, MISSISSIPPI

▲ title:
LARGE SCALE
KING SUITE AND
EXERCISE ROOM
ELECTRICAL PLANS

▲ date: 10-08-04
▲ job: 1304
▲ file:
▲ scale: as noted
▲ drawn by: chs

sheet
E04
of 7