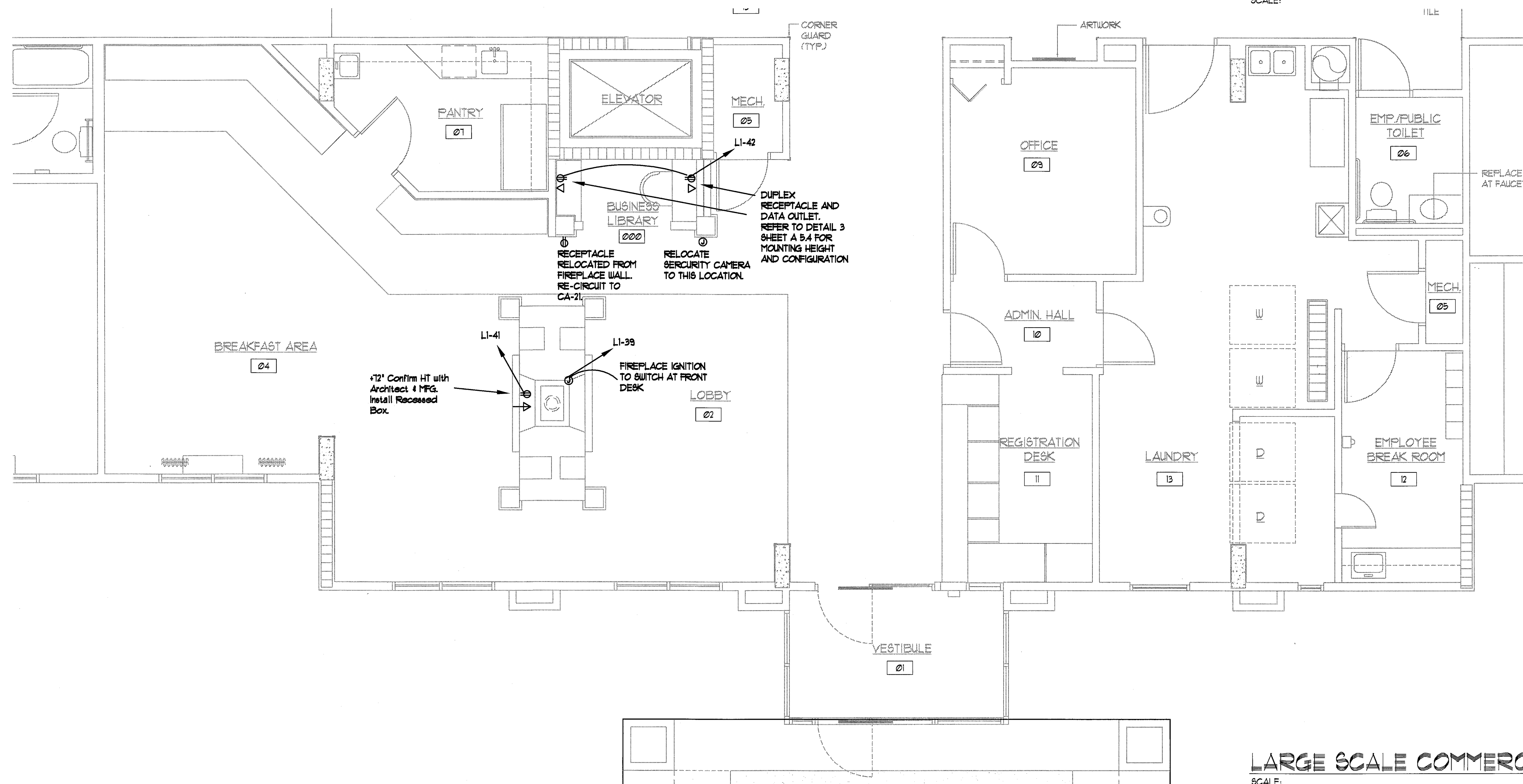


- DEMOLITION NOTES:**
1. ALL DIMENSIONS TO BE VERIFIED IN FIELD.
  2. DEMOLITION OF A WALL INCLUDES THE DISCONNECTION AND REMOVAL OF UTILITIES, ELECTRICAL OUTLETS, SWITCHES, FIXTURES, ETC.
  3. EXISTING CONDITIONS SHOWN ARE BASED ON THE ORIGINAL PLANS AND PHOTOGRAPHS. IT SHALL BE THE RESPONSIBILITY OF THE GENERAL CONTRACTOR TO INSPECT THE EXISTING CONDITIONS AND TO INCLUDE IN THE CONTRACT ALL WORK NECESSARY TO PROVIDE AND INSTALL THE DESCRIBED SYSTEMS WHETHER OR NOT THESE DRAWINGS INDICATE ALL EXISTING CONDITIONS AFFECTING THE WORK.
  4. OPERATION OF EXISTING FACILITIES MUST CONTINUE DURING CONSTRUCTION STAGES. CONTRACTOR MUST COOPERATE WITH OPERATING PERSONNEL TO AVOID OPERATIONAL DISRUPTIONS. GIVE ADEQUATE NOTICE BEFORE NECESSARY DISRUPTION OF SERVICES.
  5. THE INTENT OF THE DEMOLITION SHOWN ON THE PLANS IS TO HELP THE CONTRACTOR LOCATE AND IDENTIFY MAJOR ELEMENTS OF THE EXISTING BUILDING WHICH NEED TO BE DEMOLISHED, RELOCATED, OR OTHERWISE REWORKED TO ACCOMPLISH THE REMODELING OF THIS PROJECT. IT IS NOT A COMPLETE LIST OF DEMOLITION ITEMS. CONTRACTOR IS RESPONSIBLE FOR LOCATING OTHER ITEMS WHICH NEED TO BE DEMOLISHED, REMOVED, RELOCATED OR REWORKED TO COMPLETE THE PROJECT.
  6. PRIOR TO CONSTRUCTION GENERAL CONTRACTOR SHALL VERIFY ALL ITEMS SHOWN AS EXISTING ON THESE DRAWINGS AND NOTIFY THIS OFFICE OF ANY DISCREPANCIES.
  7. CONTRACTOR MUST TAKE PRECAUTIONS TO PROTECT OWNER'S PROPERTY FROM CONSTRUCTION OPERATIONS. BOUNDARY OF CONTRACTOR'S WORK AND STORAGE AREAS WILL BE DEFINED TO MUTUAL AGREEMENT BY CONFERENCE.
  8. SHOULD FIELD CONDITIONS DIFFER FROM PLANS TO THE EXTENT UNNECESSARY COSTS ARE INCURRED OR DELAYS ARE ANTICIPATED, THE OWNER AND ARCHITECT SHALL BE CONSULTED. AN ALTERNATE SCHEME, IF POSSIBLE WILL BE ESTABLISHED TO ATTEMPT TO SOLVE THE PROBLEM DISCOVERED.

**LARGE SCALE COMMERCIAL AREA DEMO POWER PLAN**  
SCALE: 1/4" = 1'-0"



REFER TO SHEET E07 FOR FIRE ALARM DETAILS, AND SCHEDULES.

**LARGE SCALE COMMERCIAL AREA REVISED POWER PLAN**  
SCALE: 1/4" = 1'-0"



revisions:


scale:




title:  
LARGE SCALE COMMERCIAL AREA POWER PLAN

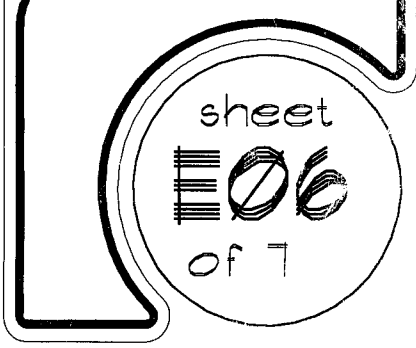
date: 10-08-04

job: 1504

file:

scale: as noted

drawn by: dme



COPYRIGHT BY LLW ARCHITECTS, INC. WARNING: UNAUTHORIZED COPYING VIOLATES U.S. COPYRIGHT LAWS AND WILL SUBJECT THE VIOLATOR TO LEGAL PROSECUTION