



CIVIL:
David Lane Beard & Associates, Inc.
105 Commercial Parkway
West Monroe, LA 71294
Phone: (318) 388-3227
Email:fgadberry@dlbengineering.com

STRUCTURAL:
WGPM, Inc.
11220 Elm Lane, Suite 201
Charlotte, NC 28277
Phone: (704) 542-7199
Fax: (704) 542-7195
Email: lwright@wgpminc.com

ELECTRICAL:
Ritter Engineering
1043 Arroyo Vista Lane
Matthew, NC 28014
Phone: (704) 516-0385
Fax: (704) 644-1464
Email: shane@rittereng.com

MECHANICAL:
Shultz Engineering Group, P.C.
212 North McDowell St., Suite 204
Charlotte, NC 28204
Phone: (704) 334-7363
Fax: (704) 347-0093
Email: don@shultzeg.com

[illegible]

KEY PLAN

Southern Hospitality
Services

Hampton Inn and Suites

5400 I-20 & Frontage Rd.
Monroe, LA 71201

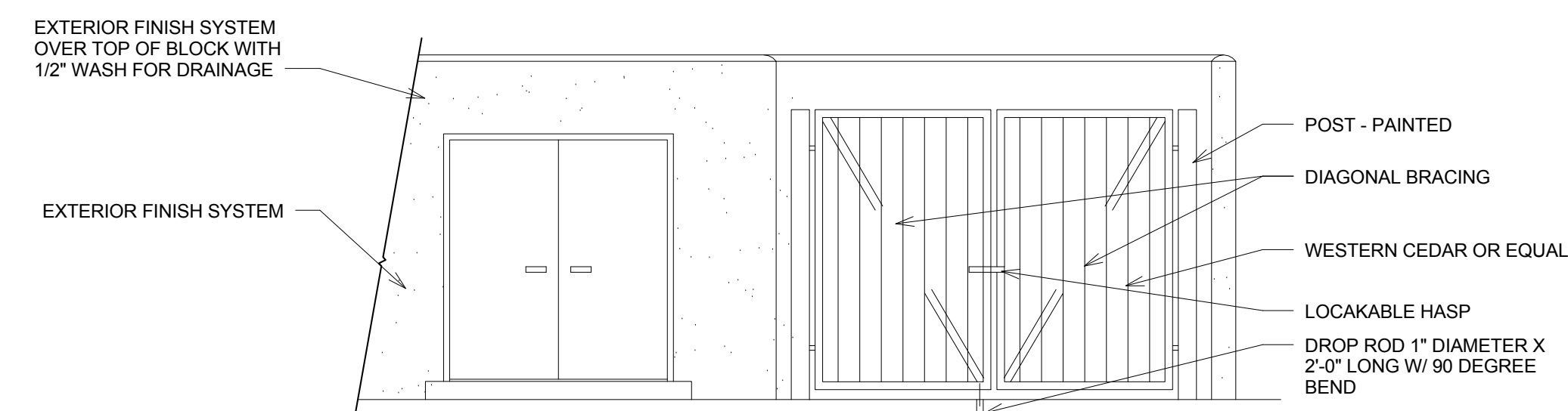
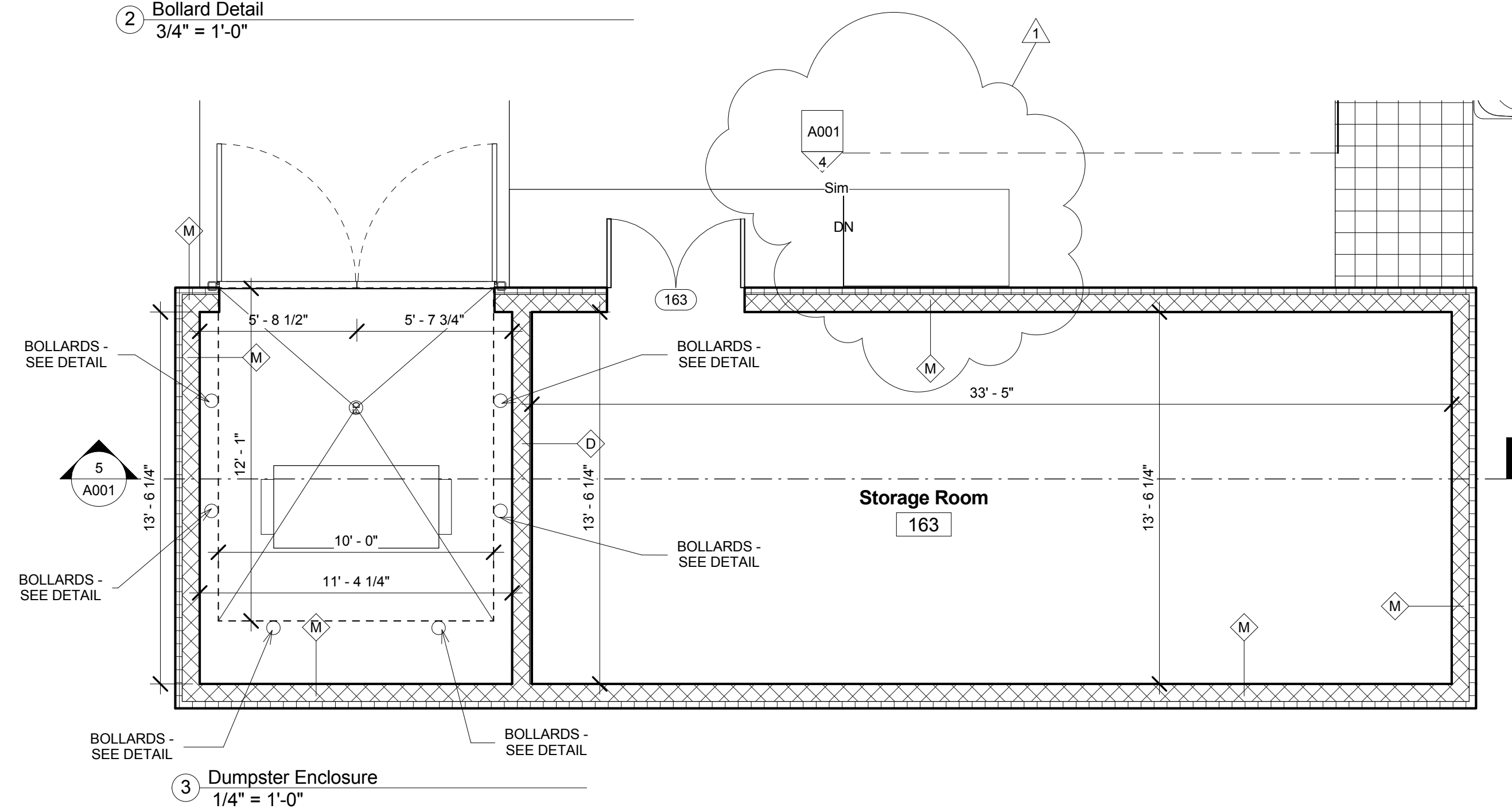
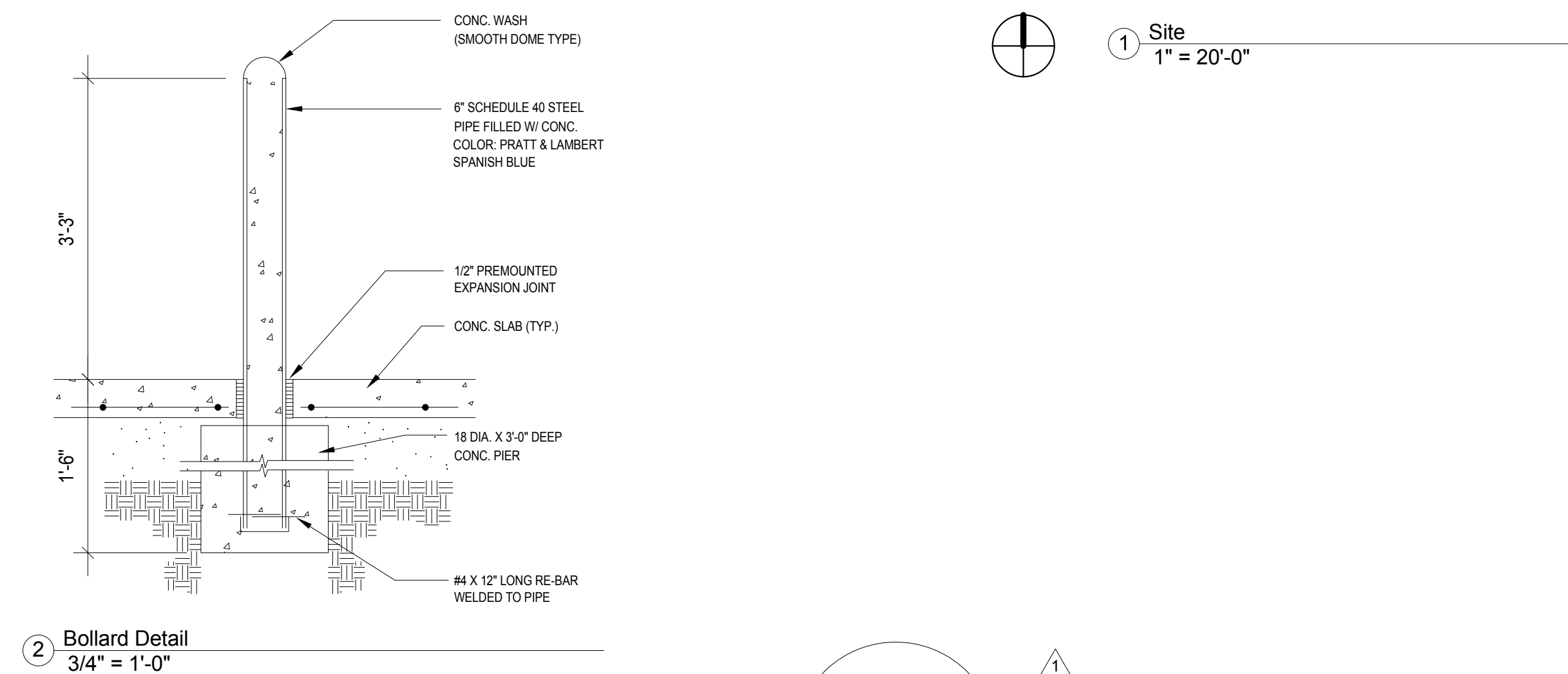
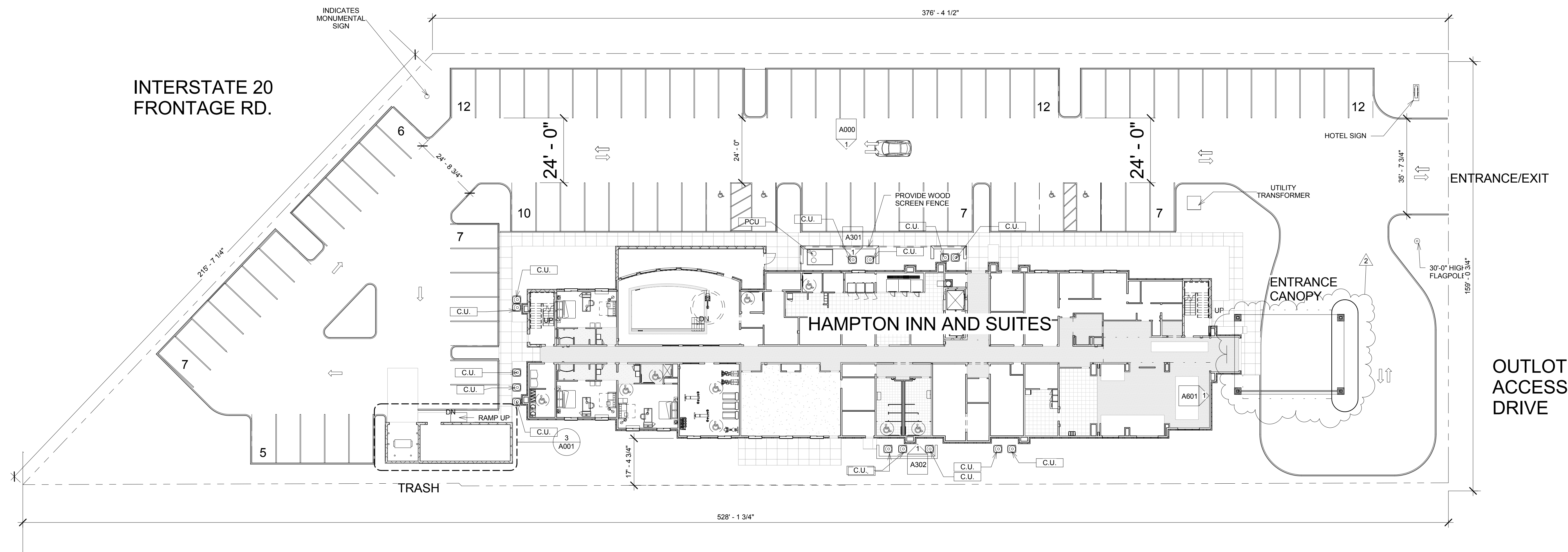
Drawing Title

Site Plan

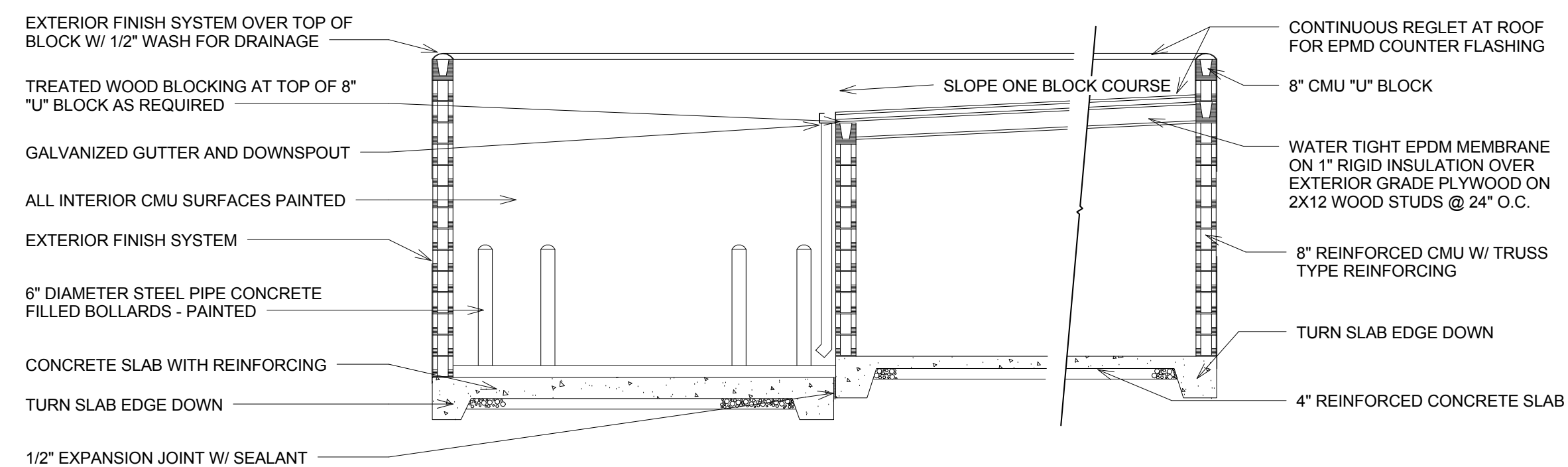
Phase
Construction Documents

Project No.	12-111	Sheet No. A001
Prepared by	Author	
Checked by	Checker	
Date	Sept. 16, 2013	

PERMIT ONLY



4 Elevation of Trash Enclosure
1/4" = 1'-0"



5 Section of Trash Enclosure
1/4" = 1'-0"