

REVISIONS		
No.	Date	Description
1	12/3/13	Hilton review
2	3/11/14	Hilton update

Information contained on this drawing and in all digital files associated is authorized for use on the project named herein only and is the property of MISHRA ARCHITECTURE PLLC and may not be reproduced in any manner without express written or verbal permission from authorized individuals. Original drawing is 24"x36" and scales are as indicated. © 2013 MISHRA ARCHITECTURE PLLC



KEY PLAN

Southern Hospitality
Services

Hampton Inn and
Suites

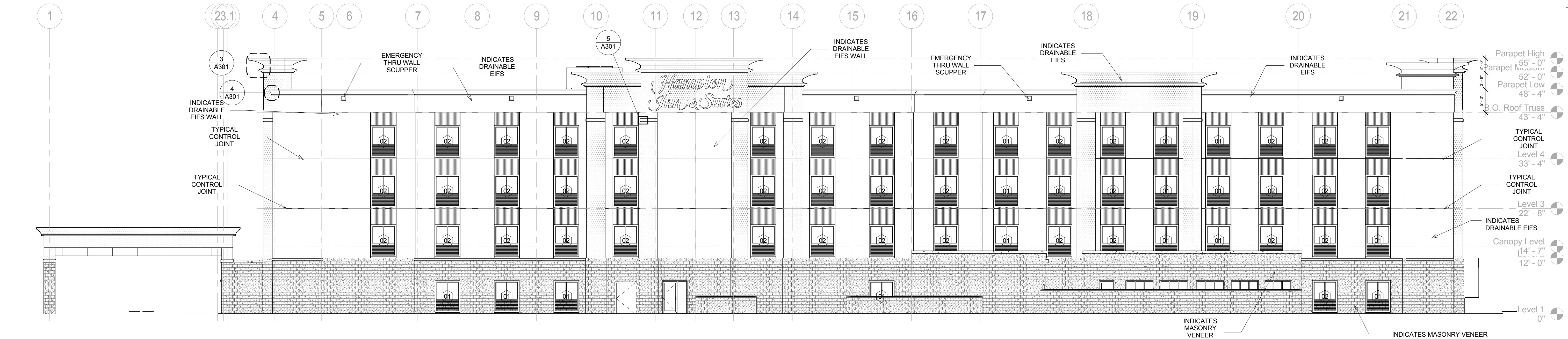
5400 I-20 & Frontage Rd.
Monroe, LA 71201

Drawing Title
Elevations

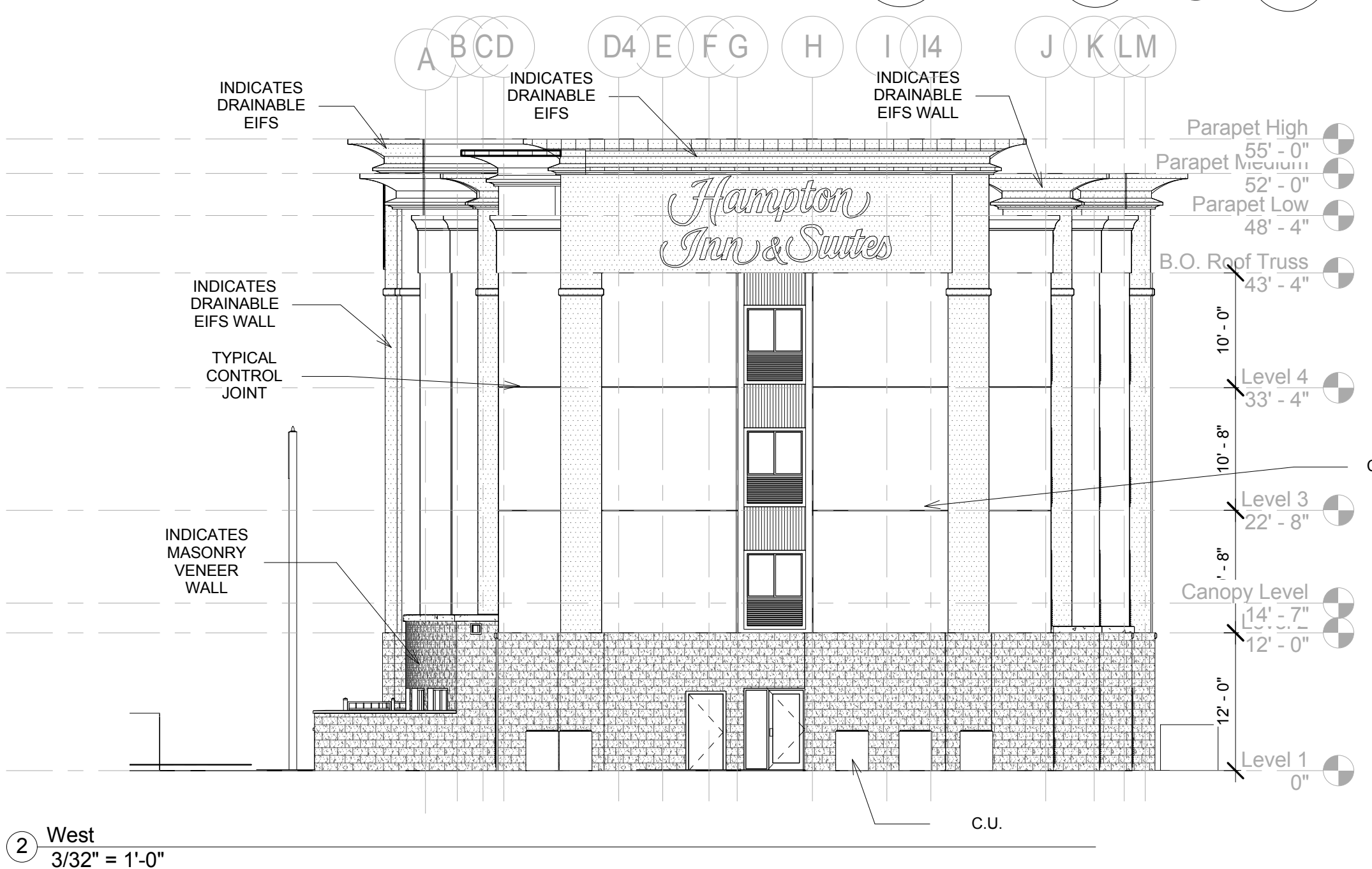
Phase
Construction Documents

Project No.	12-111	Sheet No.	A301
Prepared by	Author		
Checked by	Checker		
Date	Sept. 16, 2013		

Released for
PERMIT ONLY

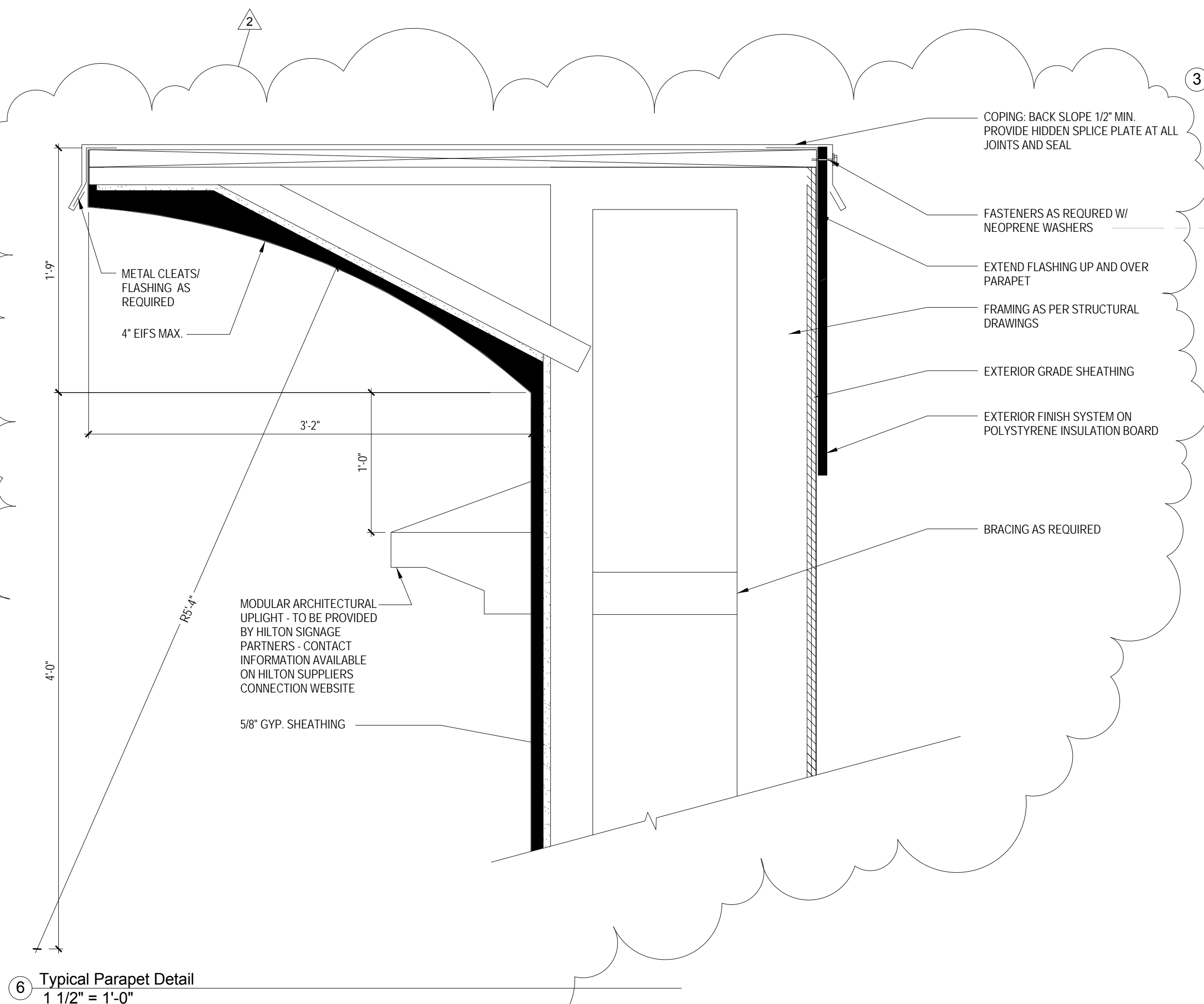


E.I.F.S. COLOR LEGEND	
	COLOR 'A' SW DRYVIT #400 FRENCH TOAST
	COLOR 'B' SW DRYVIT #108 MANOR WHITE
	COLOR 'C' SW #7523 BURNISHED BRANDY
	MASONRY VENEER WILL BE SPLIT-FACE CMU VENEER 'BLOCK USA, SMOKE HOUSE BROWN'
REFERENCE STANDARDS FOR APPROVED COLOR OPTIONS SW STANDS FOR SHERWIN WILLIAMS	

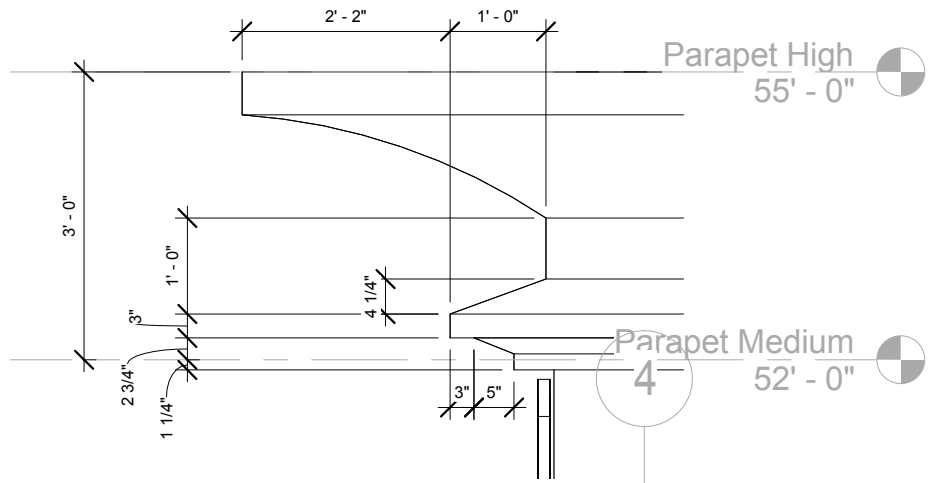


West
3/32" = 1'-0"

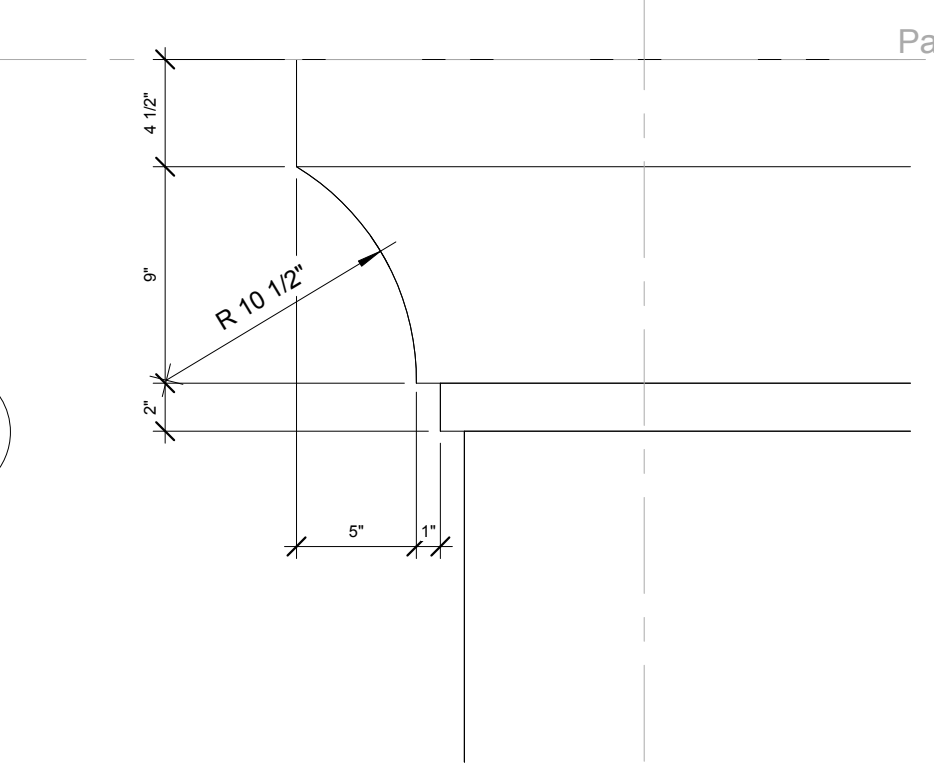
North
3/32" = 1'-0"



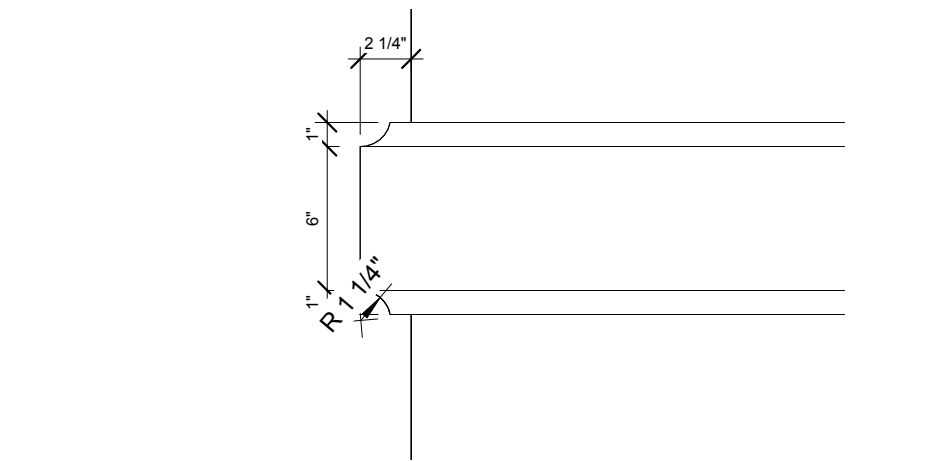
Typical Parapet Detail
1 1/2" = 1'-0"



High Parapet Profile
1/2" = 1'-0"



Low Parapet Profile
1 1/2" = 1'-0"



EIFS Band Detail Typical
1 1/2" = 1'-0"