

REVISIONS		
No.	Date	Description
2	3/11/14	Hilton update

Information contained on this drawing and in all digital files associated is authorized for use on the project named herein only and is the property of MISHRA ARCHITECTURE PLLC and may not be reproduced in any manner without express written or verbal permission from authorized individuals. Original drawing is 24"x36" and scales are as indicated. © 2013 MISHRA ARCHITECTURE PLLC



KEY PLAN

Southern Hospitality
Services

Hampton Inn and
Suites

5400 I-20 & Frontage Rd.
Monroe, LA 71201

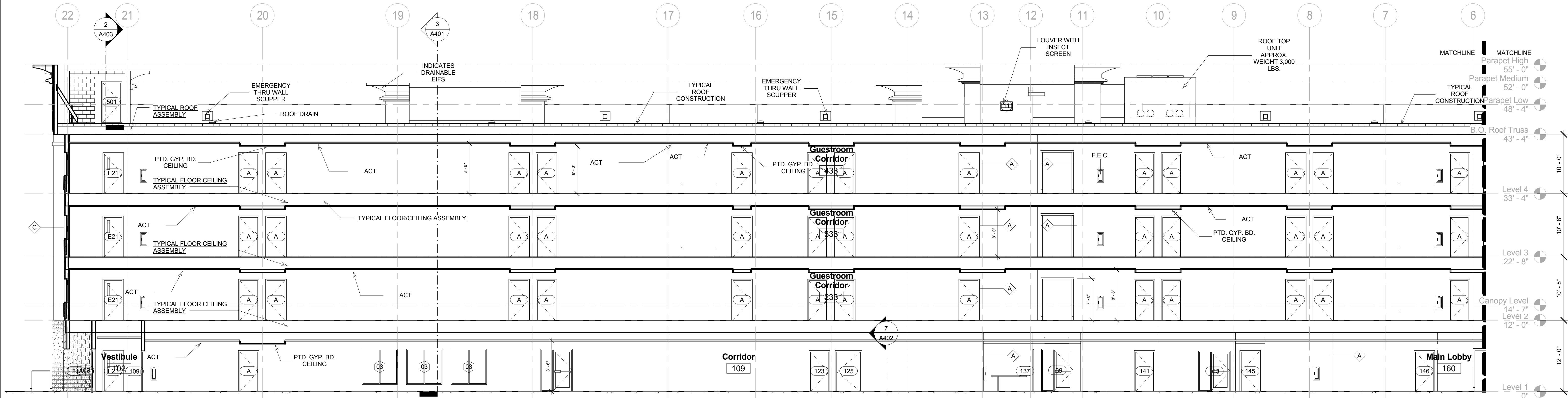
Drawing Title
Sections

Phase
Construction Documents

Project No.	12-111	Sheet No.	A401
Prepared by	Author		
Checked by	Checker		
Date	Sept. 16, 2013		

Released for
PERMIT ONLY

Hampton Inn and Suites



Section 1
1/8" = 1'-0"

TYPICAL EXTERIOR MASONRY WALL ASSEMBLY

FACE BRICK WITH 7/8" WIDE 29 GA. GALV. METAL TIES AT 32" O.C.
HORIZONTAL 16" O.C. VERTICAL W/ 1" AIR GAP 8" CMU BLOCK W/
WATERPROOFING 1" SCORED RIGID INSULATION. FURRYING
CHANNELS W/ 5/8" GYP BD. ON INSIDE

TYPICAL EIFS WALL CONSTRUCTION:

-5/8" GYPSUM ON 6" WOOD STUDS @ 16" O.C. W/ UNFACED R-13 BATT
INSULATION
-5/8" PLYWOOD SHEATHING
-2" DRAINABLE EIFS

TYPICAL ROOF CONSTRUCTION:

ONE HOUR RATED ASSEMBLY AS PER U.L. DESIGN P-522
-60 MIL FULLY ADHERED TPO (THERMOPLASTIC OLEFIN) WHITE
ROOFING MEMBRANE
-4.5" MINIMUM RIGID INSULATION ON ROOF DECK
-5/8" GYP. BD. WITH 6" BATT INSULATION MIN. ON 2 1/2" FURRING
CHANNELS @ 24" O.C. ON CEILING SIDE-SEE STRUCTURAL
DRAWINGS FOR DETAILS

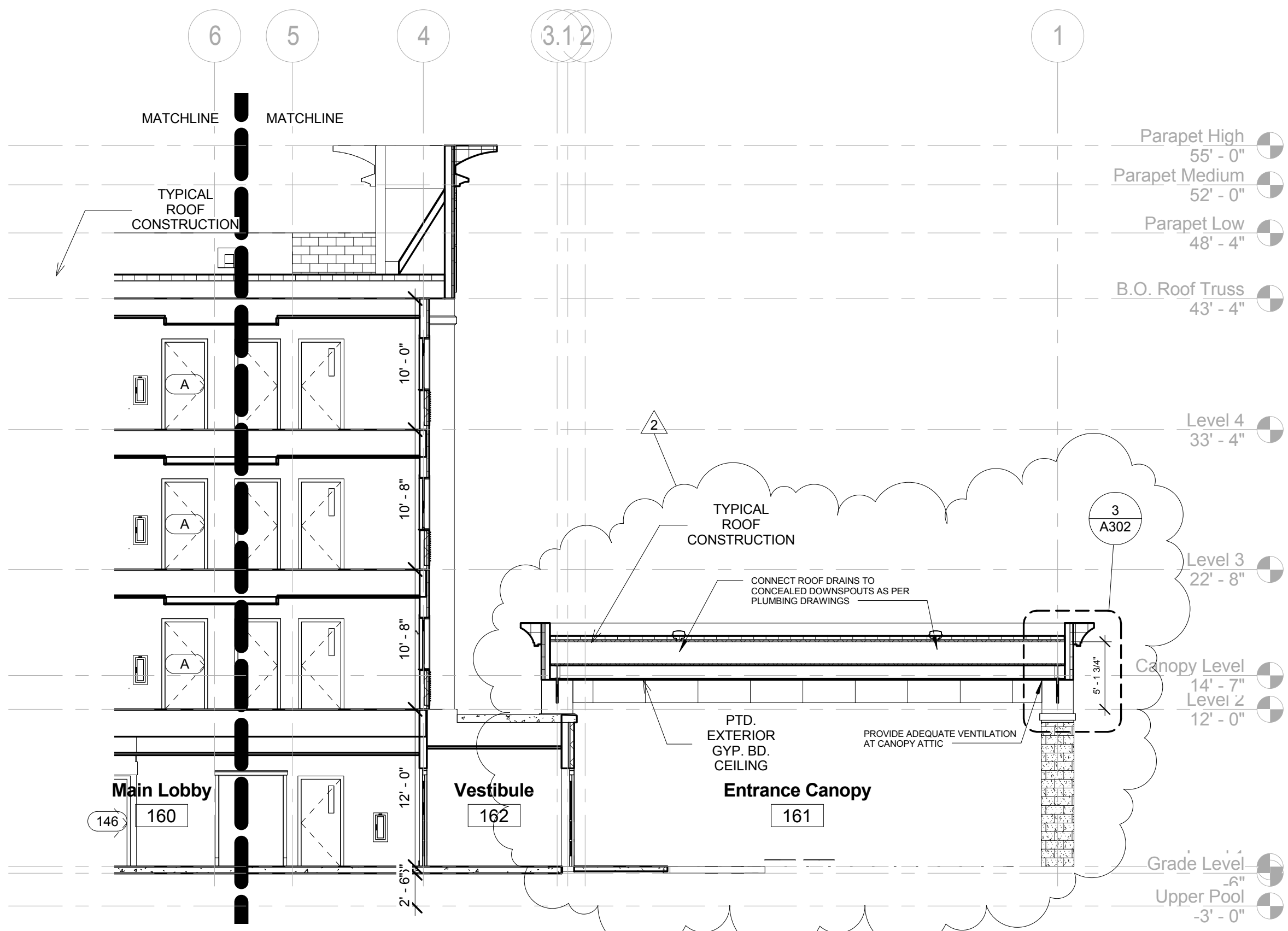
TYPICAL PARAPET CONSTRUCTION:

-PREFINISHED METAL COPING ON TREATED BLOCKING.
-ROOF MEMBRANE ALONG INSIDE FACE, UP AND OVER TOP OF PARAPET
WALL.
-PLYWOOD (FIRE TREATED) NAILER PANEL AT INSIDE FACE OF WALL-SEE
DETAIL

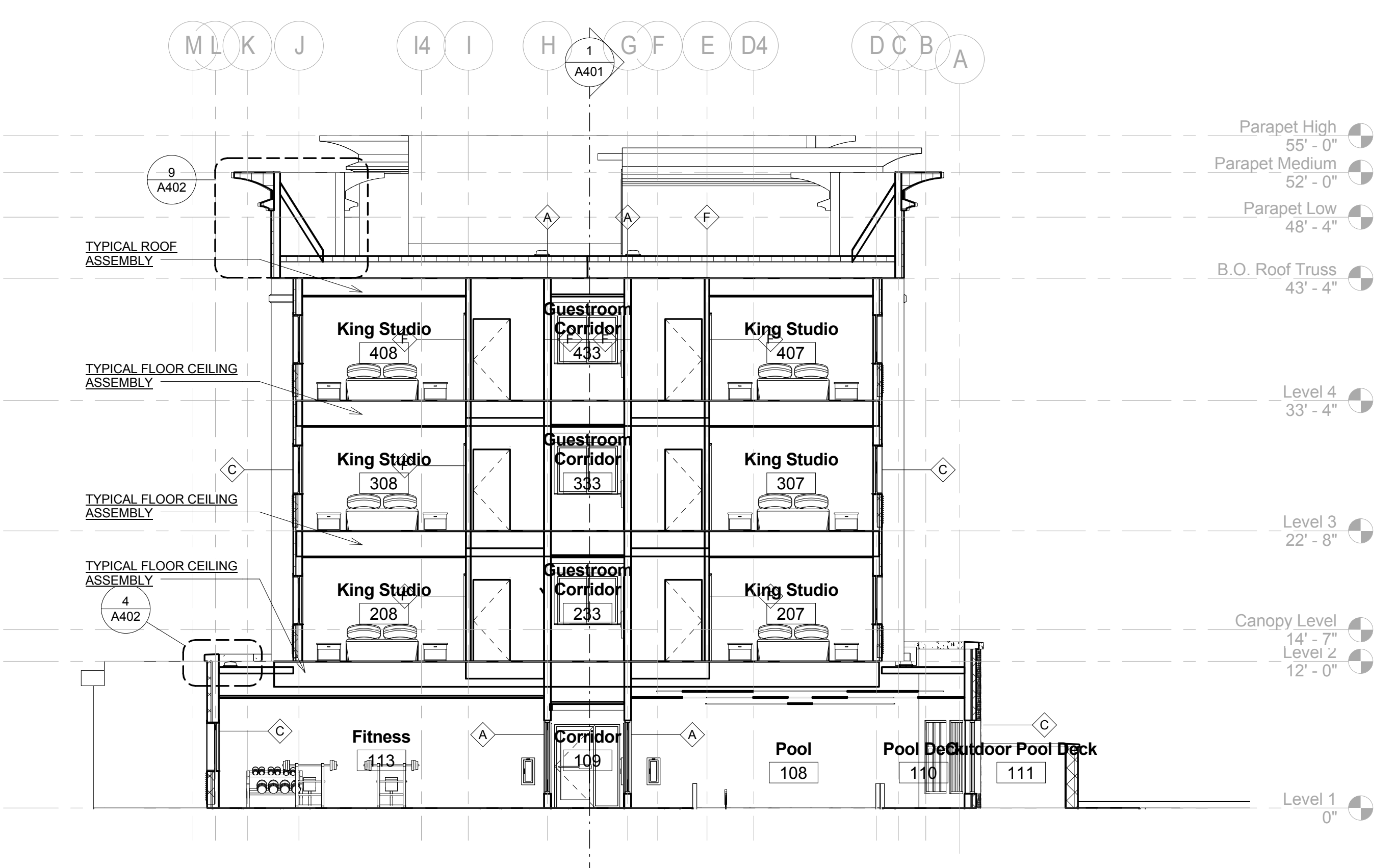
TYPICAL FLOOR/CEILING ASSEMBLY:

ONE HOUR RATED ASSEMBLY AS PER U.L. DESIGN L-528
3/4" GYPCRETE ON SEALANT OVER 23/32" STRUCTURAL PANELS ON 16"
WOOD TRUSSES @ 24" O.C.
5/8" F.C. GYP. BD. ON #26 MSG. RESILIENT CHANNELS @ 16" O.C.

ALL ACOUSTICAL CEILING TILE TO BE INSTALLED BELOW THE
ONE-HOUR RATED FLOOR/CEILING ASSEMBLY WITHOUT COMPROMISING
ON THE ASSEMBLY RATING. ALL PENETRATIONS TO BE FIRE-CAULKED AS
PER UL STANDARDS TO PROVIDE ONE-HOURS FLOOR/CEILING ASSEMBLY
ON ALL FLOORS.



Section 2
1/8" = 1'-0"



Section 3
1/8" = 1'-0"