

3 Laundry Chute Detail  
1/4" = 1'-0"

**TYPICAL EXTERIOR MASONRY WALL ASSEMBLY**  
FACE BRICK WITH 7/8" WIDE 29 GA. GALV. METAL TIES AT 32" O.C. HORIZONTAL 16" O.C. VERTICAL W/ 1" AIR GAP 8" CMU BLOCK W/ WATERPROOFING 1" SCORED RIGID INSULATION. FURRYING CANNELS W/ 5/8" GYP. BD. ON INSIDE

**TYPICAL EIFS WALL CONSTRUCTION:**  
-5/8" GYPSUM ON 6" WOOD STUDS @ 16" O.C. W/ UNFACED R-13 BATT INSULATION  
-5/8" PLYWOOD SHEATHING  
-2" DRAINABLE EIFS

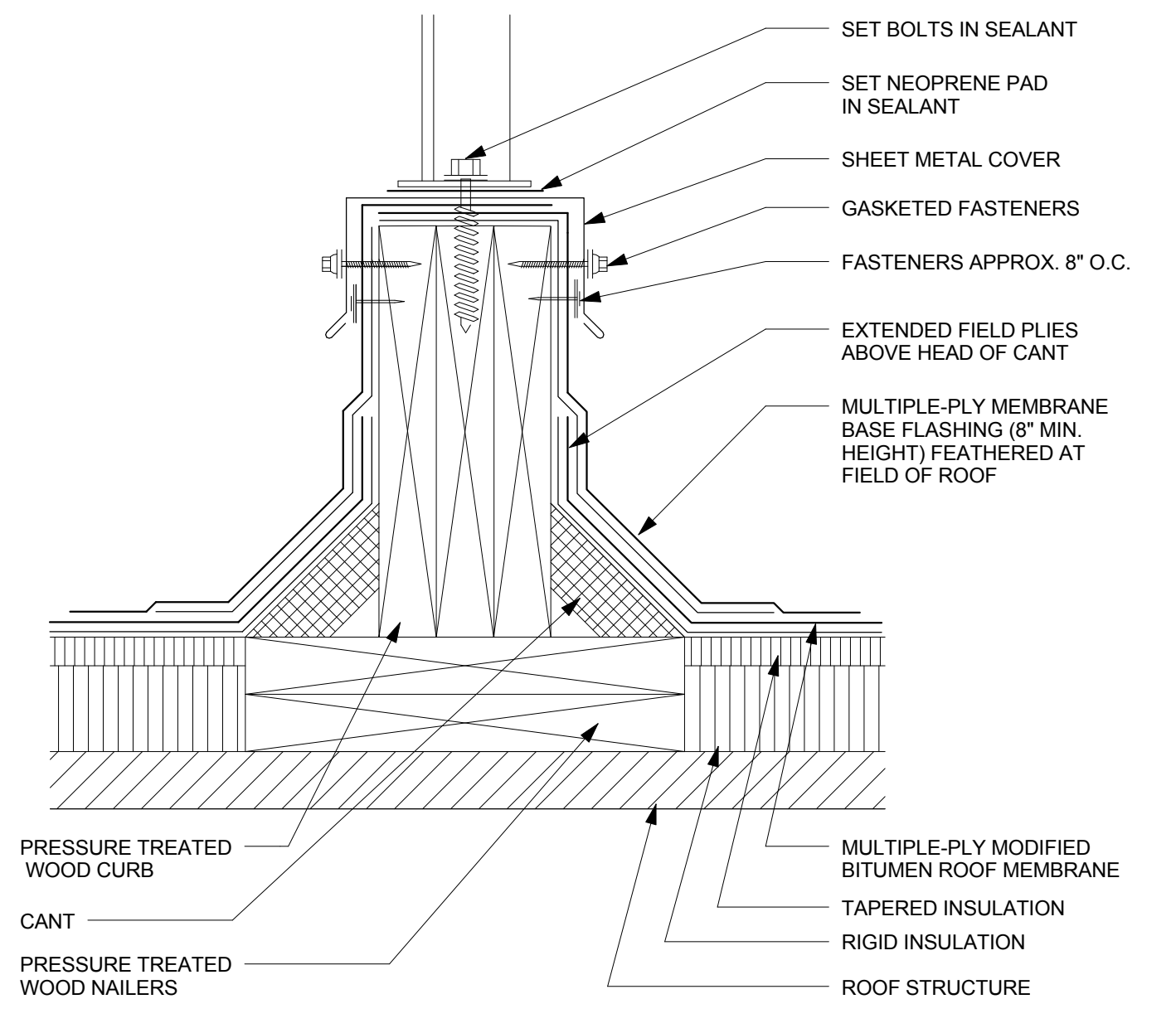
**TYPICAL ROOF CONSTRUCTION:**  
ONE HOUR RATED ASSEMBLY AS PER U.L. DESIGN P-522  
-60 MIL FULLY ADHERED TPO (THERMOPLASTIC OLEFIN) WHITE ROOFING MEMBRANE  
-4 5" MINIMUM RIGID INSULATION ON ROOF DECK.  
-5/8" GYP. BD. WITH 6" BATT INSULATION MIN. ON 2 1/2" FURRING CHANNELS @ 24" O.C. ON CEILING SIDE-SEE STRUCTURAL DRAWINGS FOR DETAILS

**TYPICAL PARAPET CONSTRUCTION:**  
-PREFINISHED METAL COPING ON TREATED BLOCKING.  
-ROOF MEMBRANE ALONG INSIDE FACE, UP AND OVER TOP OF PARAPET WALL.  
-PLYWOOD (FIRE TREATED) NAILER PANEL AT INSIDE FACE OF WALL-SEE DETAIL

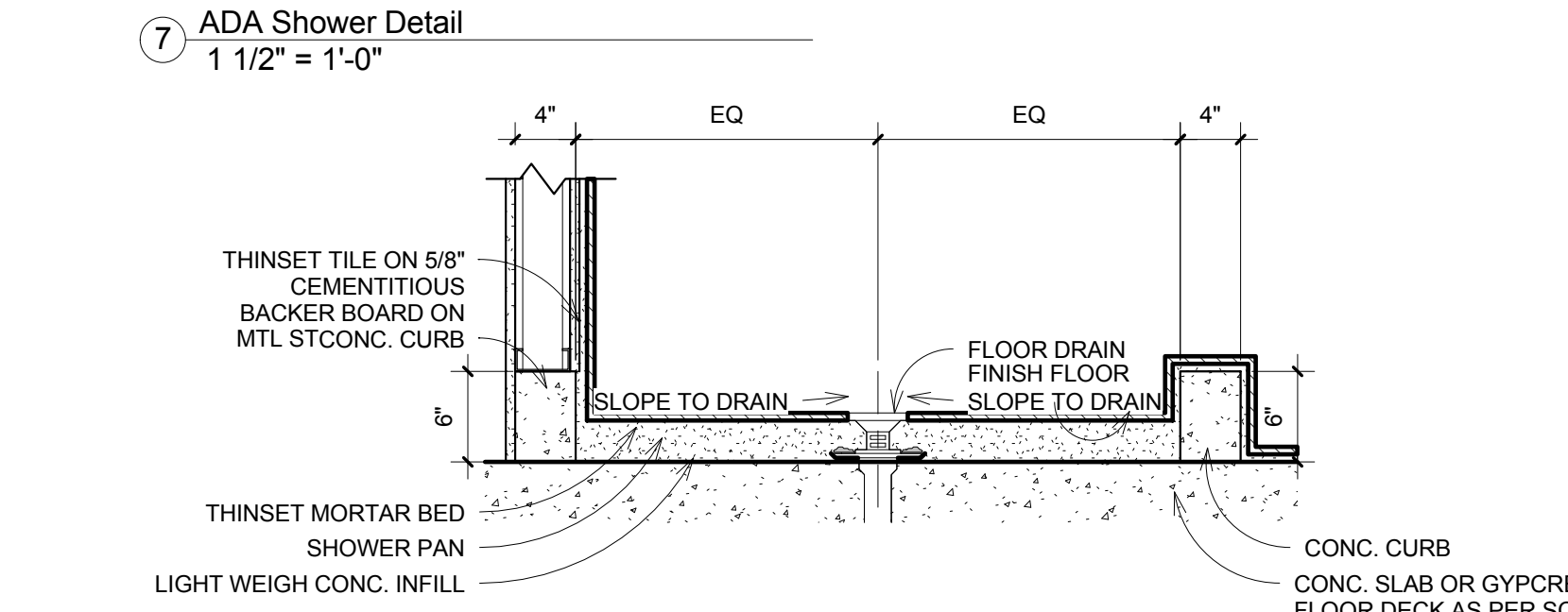
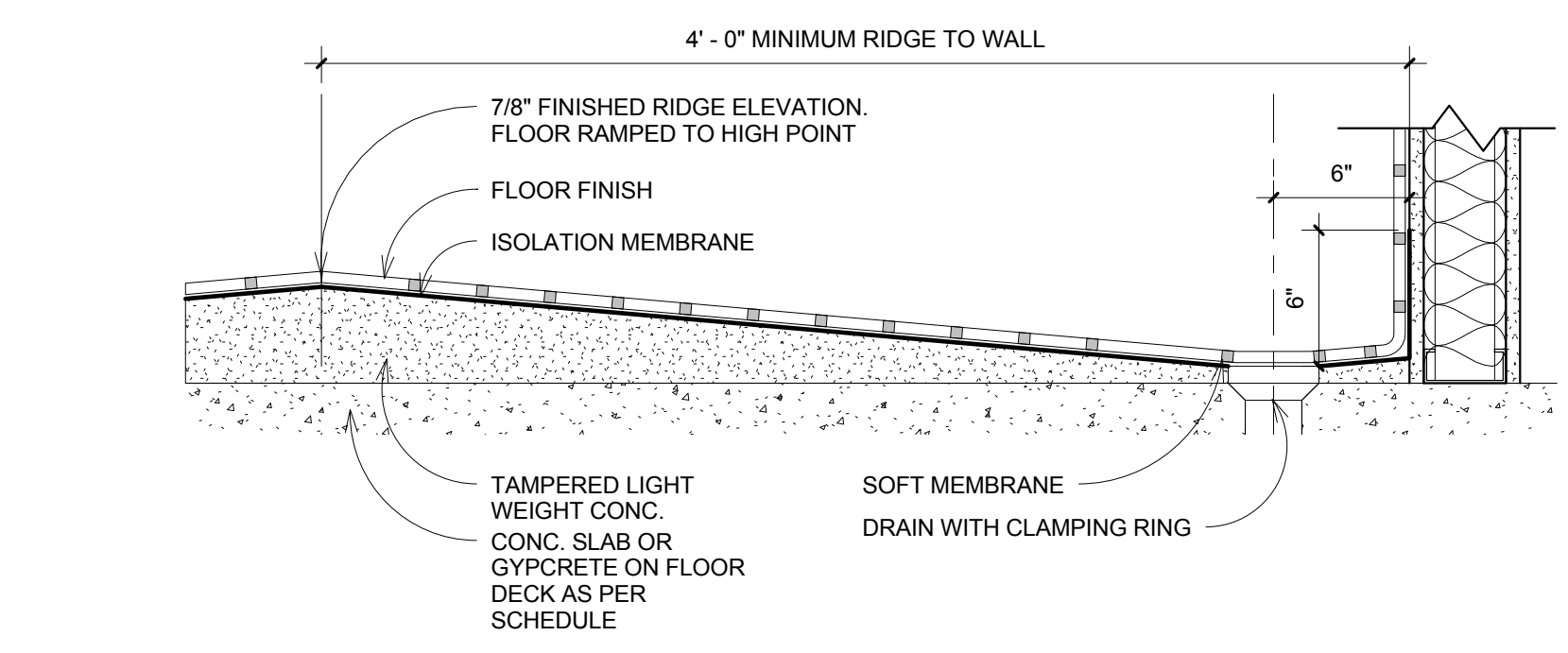
**TYPICAL FLOOR/CEILING ASSEMBLY:**  
ONE HOUR RATED ASSEMBLY AS PER U.L. DESIGN L-528  
3/4" GYPCRETE ON SEALANT OVER 23/32" STRUCTURAL PANELS ON 16" WOOD TRUSSES @ 24" O.C.  
5/8" F.C. GYP. BD. ON #26 MSG. RESILIENT CHANNELS @ 16" O.C.

ALL ACOUSTICAL CEILING TILE TO BE INSTALLED BELOW THE ONE-HOUR RATED FLOOR/CEILING ASSEMBLY WITHOUT COMPROMISING ON THE ASSEMBLY RATING. ALL PENETRATIONS TO BE FIRE-CAULKED AS PER UL STANDARDS TO PROVIDE ONE-HOURS FLOOR/CEILING ASSEMBLY ON ALL FLOORS.

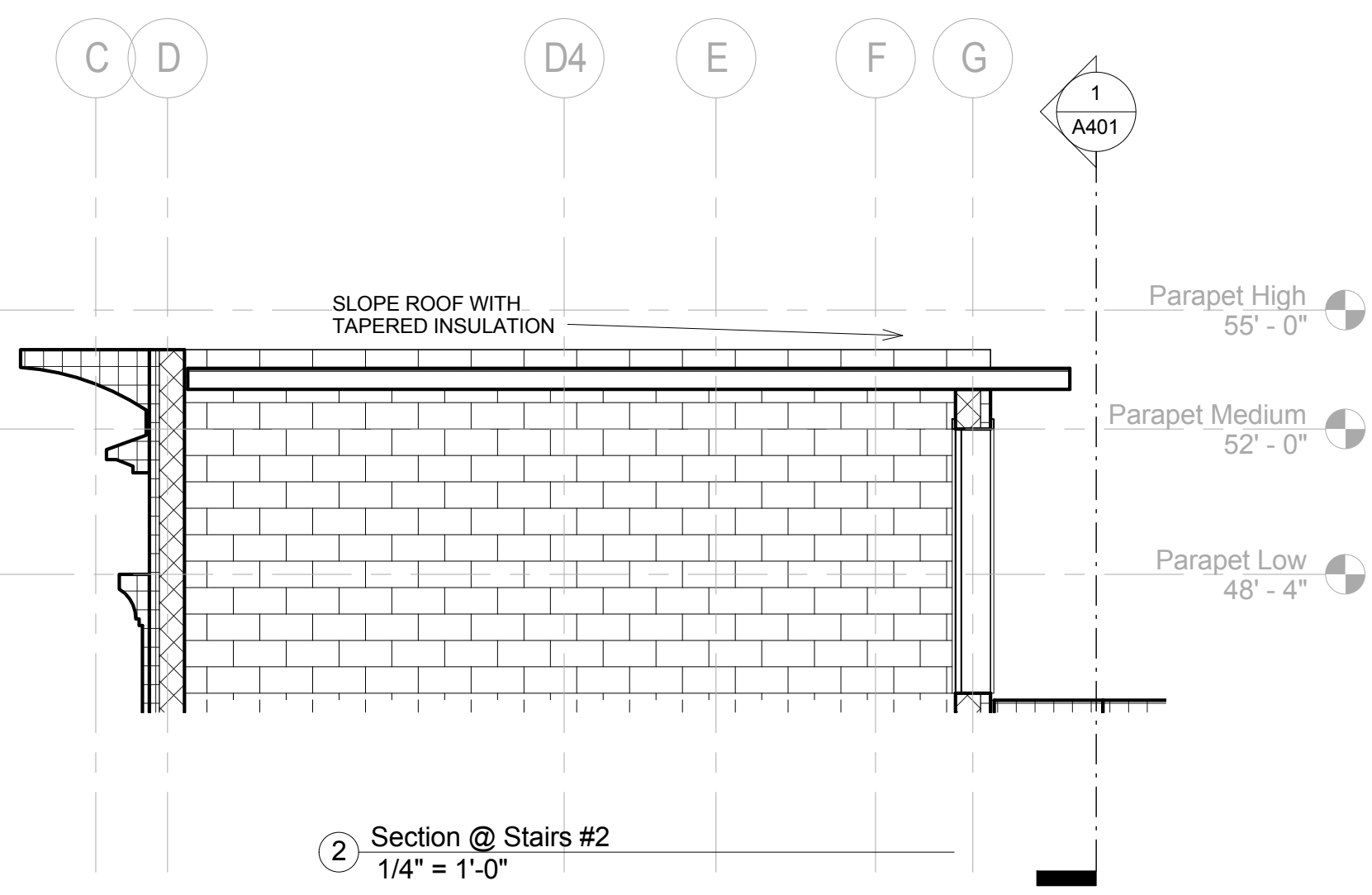
WIDTH OF EQUIPMENT	HEIGHT OF LEGS
UP TO 24" [UP TO 600mm]	24" [600mm]
24" TO 48" [600mm TO 1.2m]	36" [900mm]
48" AND WIDER [1.2m AND WIDER]	48" [1.2m]



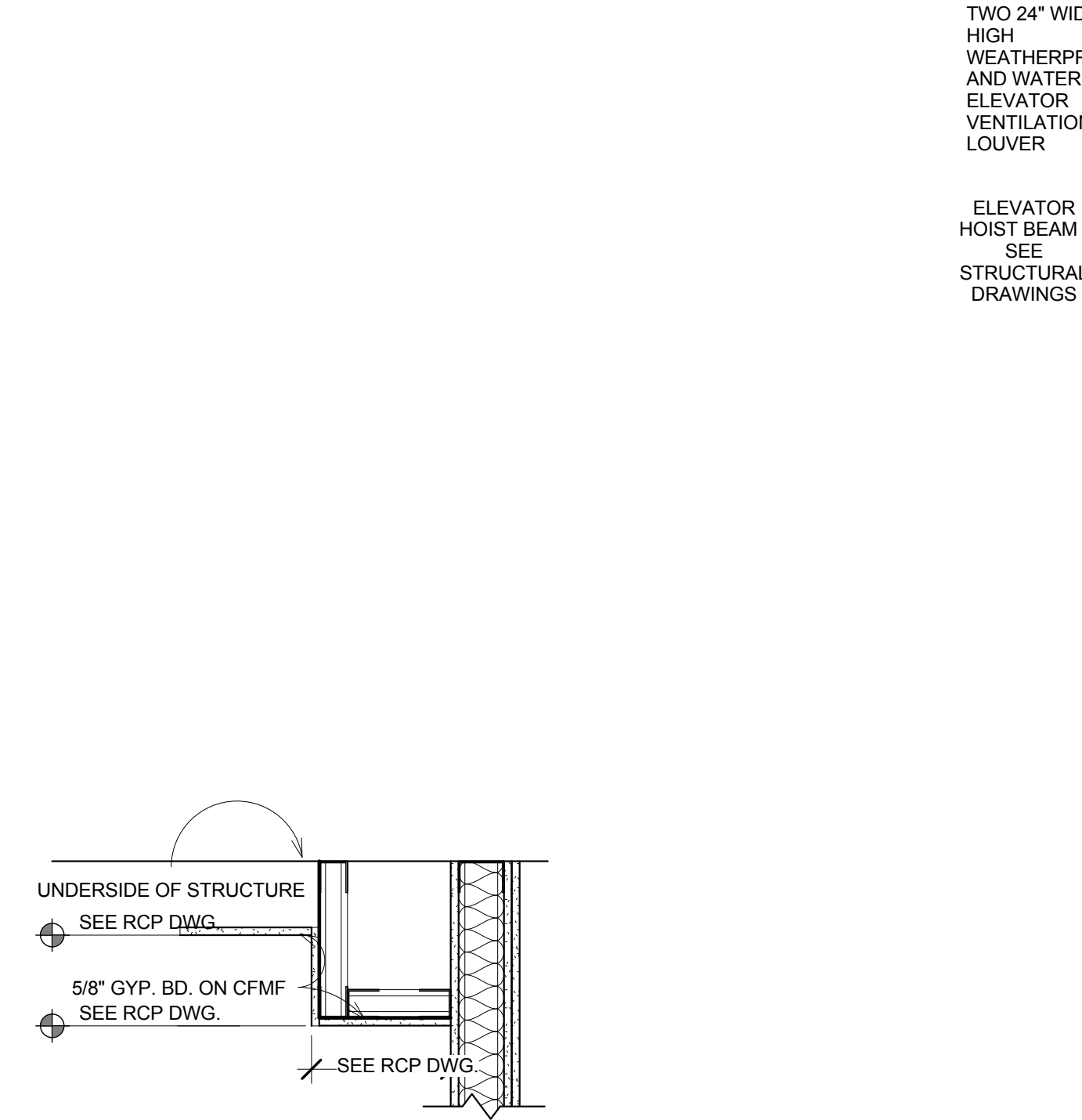
5 Equipment Curb Detail  
12" = 1'-0"



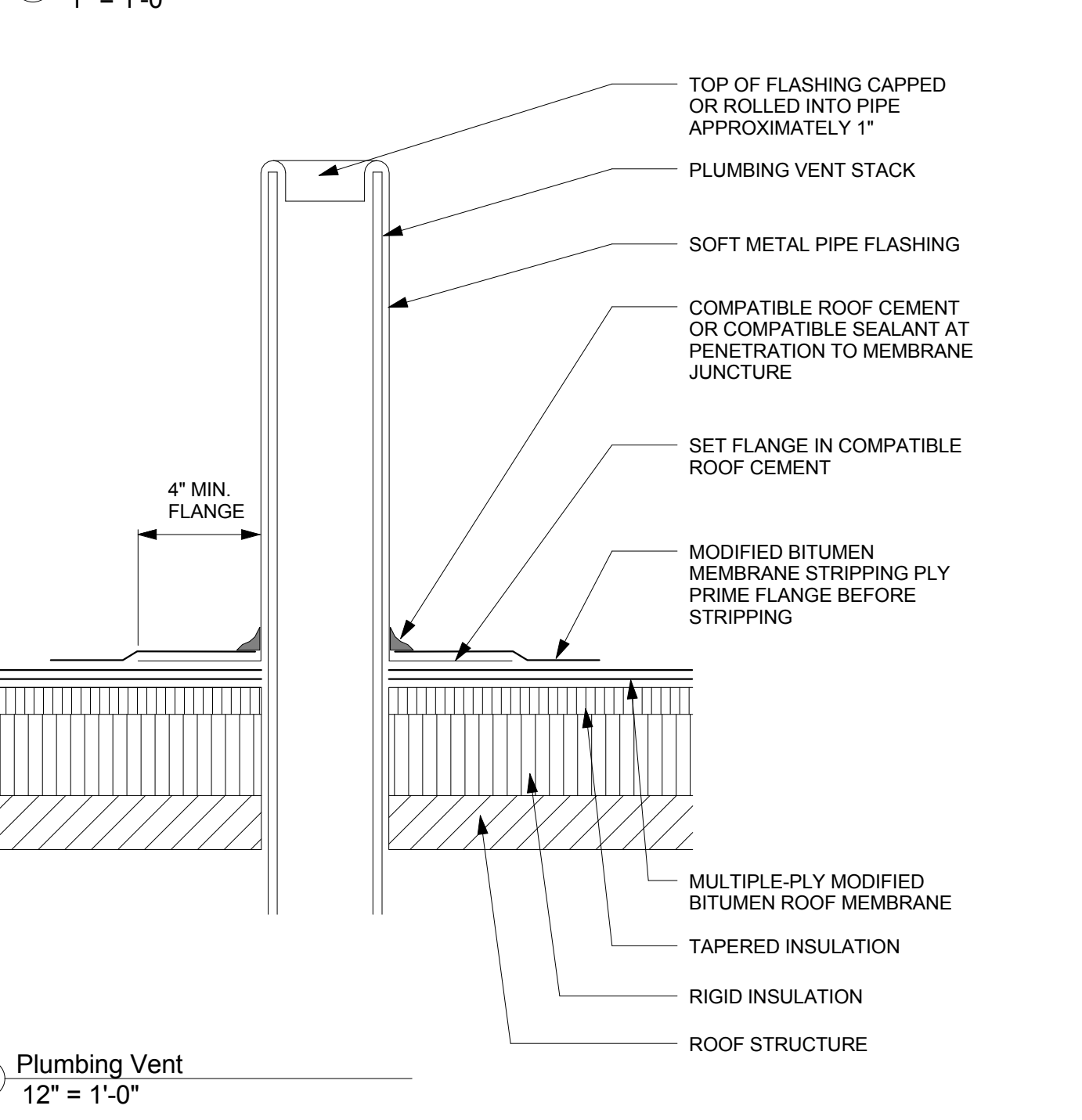
8 Shower Pan Detail  
1" = 1'-0"



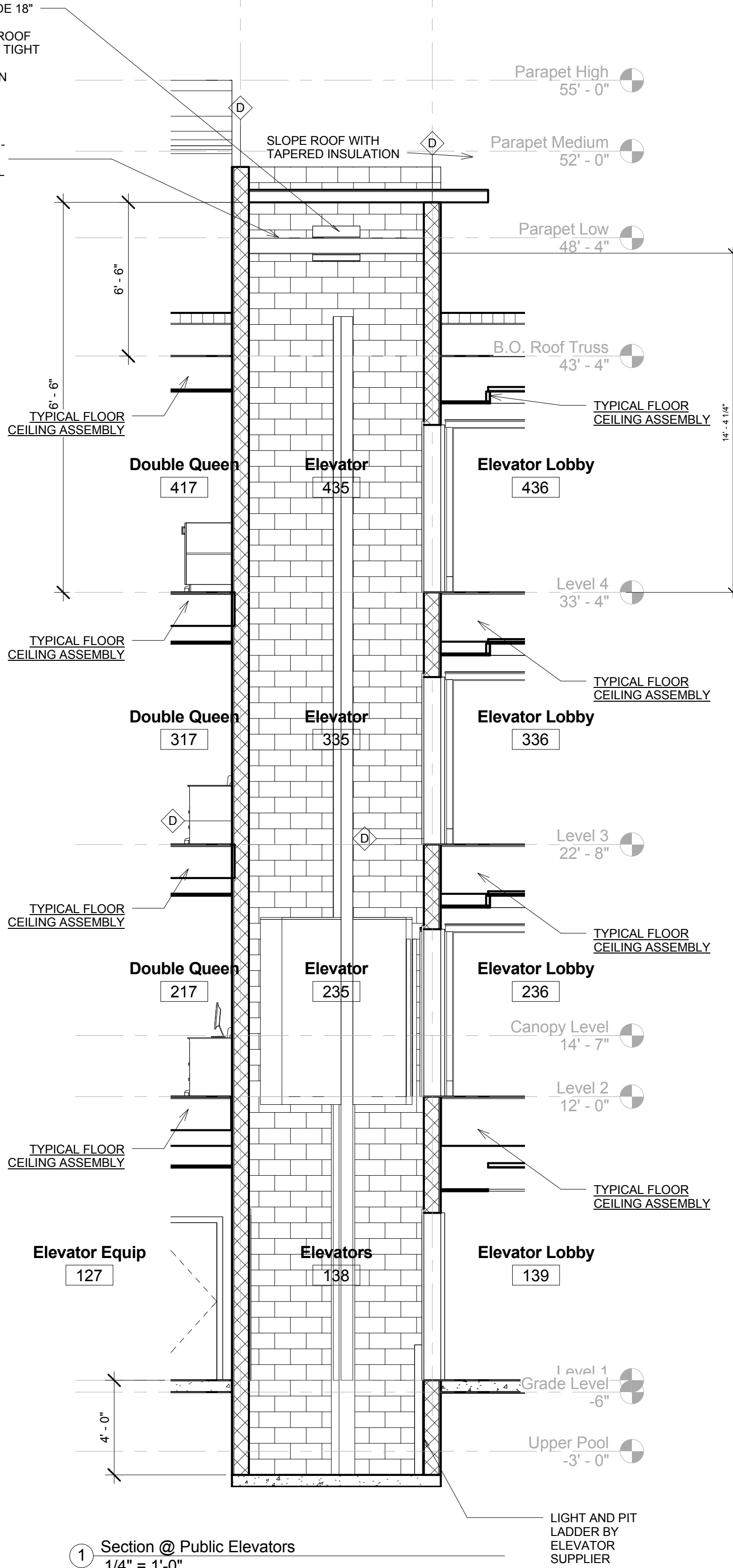
2 Section @ Stairs #2  
1/4" = 1'-0"



6 Room Soffit  
1" = 1'-0"



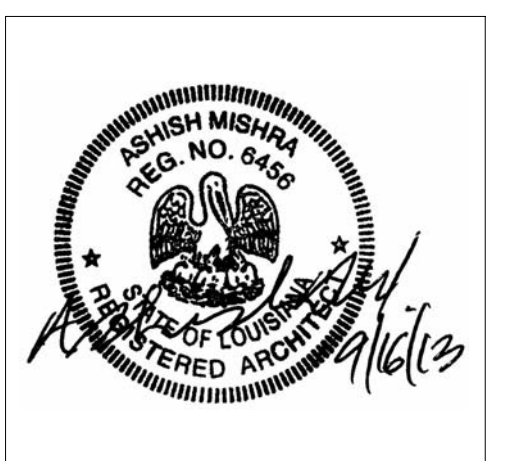
9 Plumbing Vent  
12" = 1'-0"



1 Section @ Public Elevators  
1/4" = 1'-0"

REVISIONS		
No.	Date	Description

Information contained on this drawing and in all digital files associated is authorized for use on the project named herein only and is the property of MISHRA ARCHITECTURE PLLC and may not be reproduced in any manner without express written or verbal permission from authorized individuals. Original drawing is 24"x36" and scales are as indicated. © 2013 MISHRA ARCHITECTURE PLLC



**KEY PLAN**  
Southern Hospitality Services

Hampton Inn and Suites

5400 I-20 & Frontage Rd.  
Monroe, LA 71201

Drawing Title  
**Sections**

Phase  
Construction Documents

Project No. 12-111  
Prepared by Author  
Checked by Checker  
Date Sept. 16, 2013

Sheet No.  
**A403**

Released for PERMIT ONLY