

REVISIONS		
No.	Date	Description

Information contained on this drawing and in all digital files associated is authorized for use on the project named herein only and is the property of MISHRA ARCHITECTURE PLLC and may not be reproduced in any manner without express written or verbal permission from authorized individuals. Original drawing is 24"x36" and scales are as indicated. © 2013 MISHRA ARCHITECTURE PLLC



KEY PLAN

Southern Hospitality
Services

Hampton Inn and
Suites

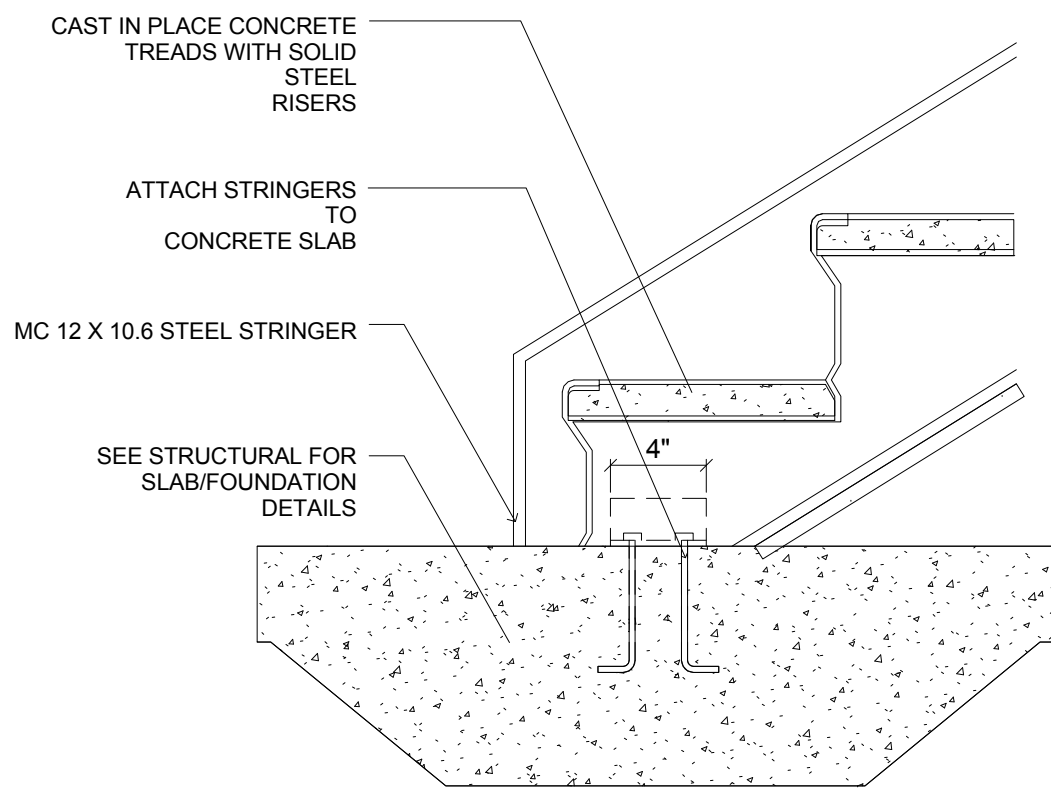
5400 I-20 & Frontage Rd.
Monroe, LA 71201

Drawing Title
Stair Details

Phase
Construction Documents

Project No.	12-111	Sheet No.
Prepared by	Author	A506
Checked by	Checker	
Date	Sept. 16, 2013	

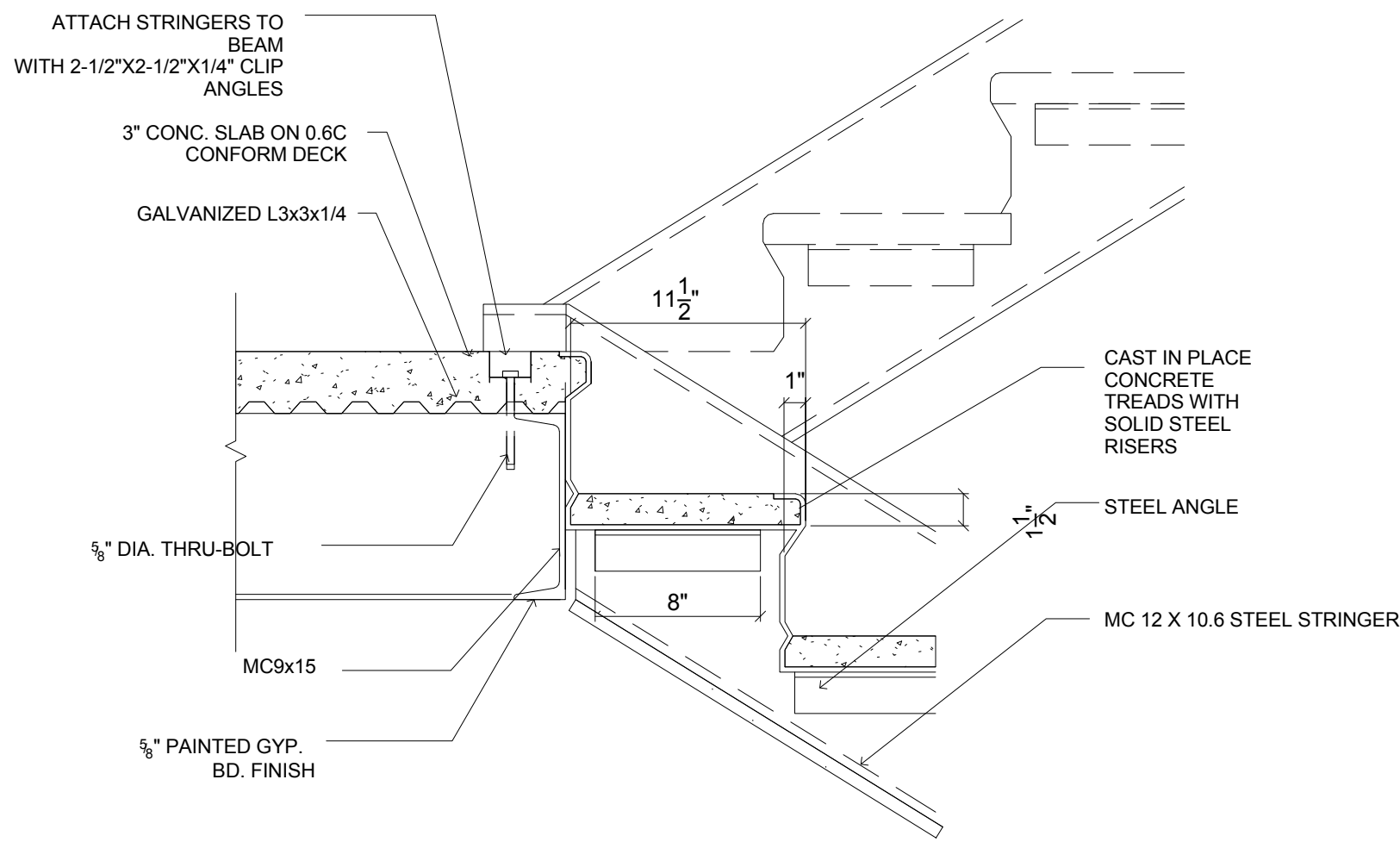
Released for
PERMIT ONLY



A STAIRS DETAIL-FIRST FLIGHT

0 4" 8" 1'-4"

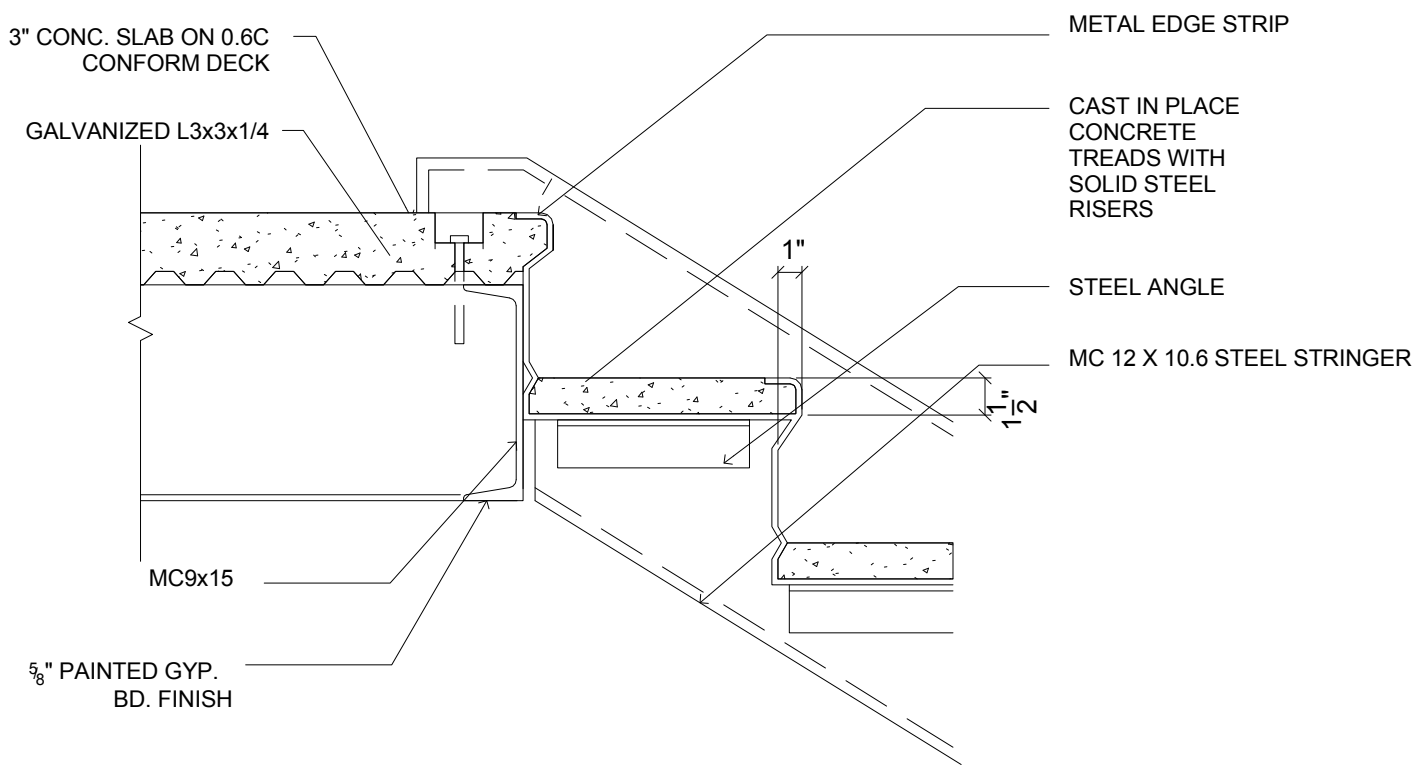
SCALE: 1 1/2" = 1'-0"



B STAIRS DETAIL-TYPICAL FLIGHT

0 4" 8" 1'-4"

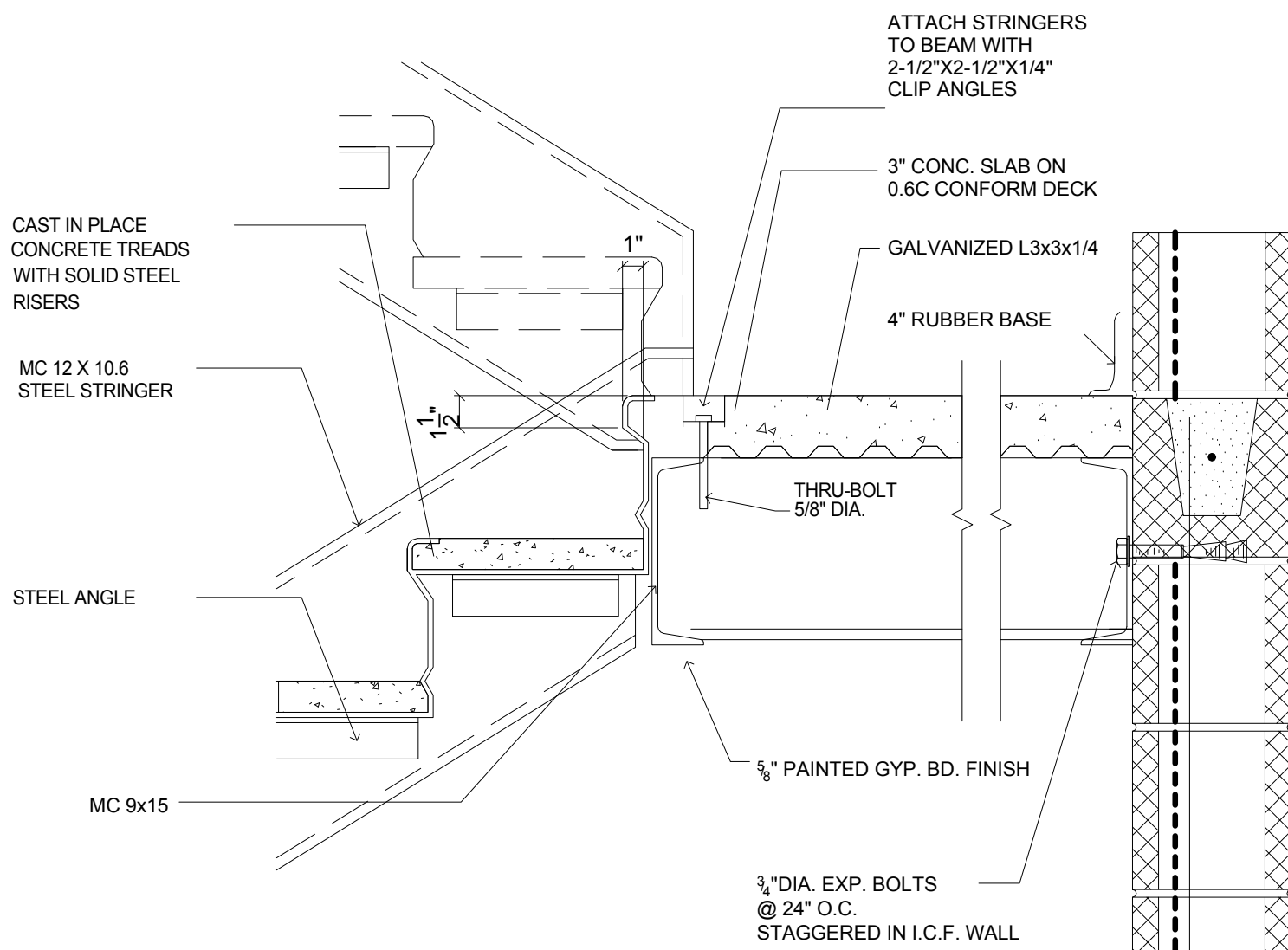
SCALE: 1 1/2" = 1'-0"



C STAIRS DETAIL-LAST FLIGHT

0 4" 8" 1'-4"

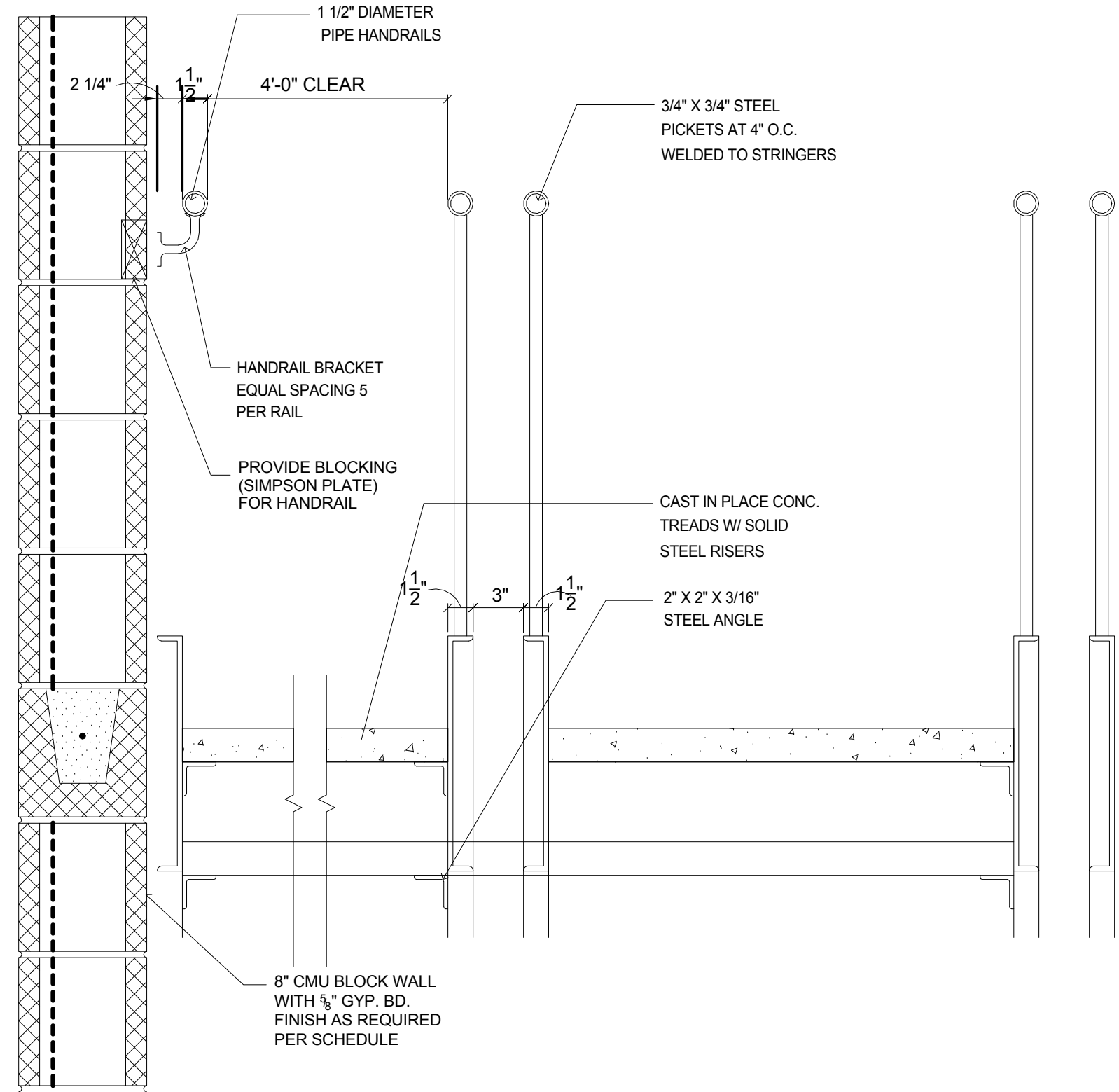
SCALE: 1 1/2" = 1'-0"



D STAIRS DETAIL MID-LANDING

0 4" 8" 1'-4"

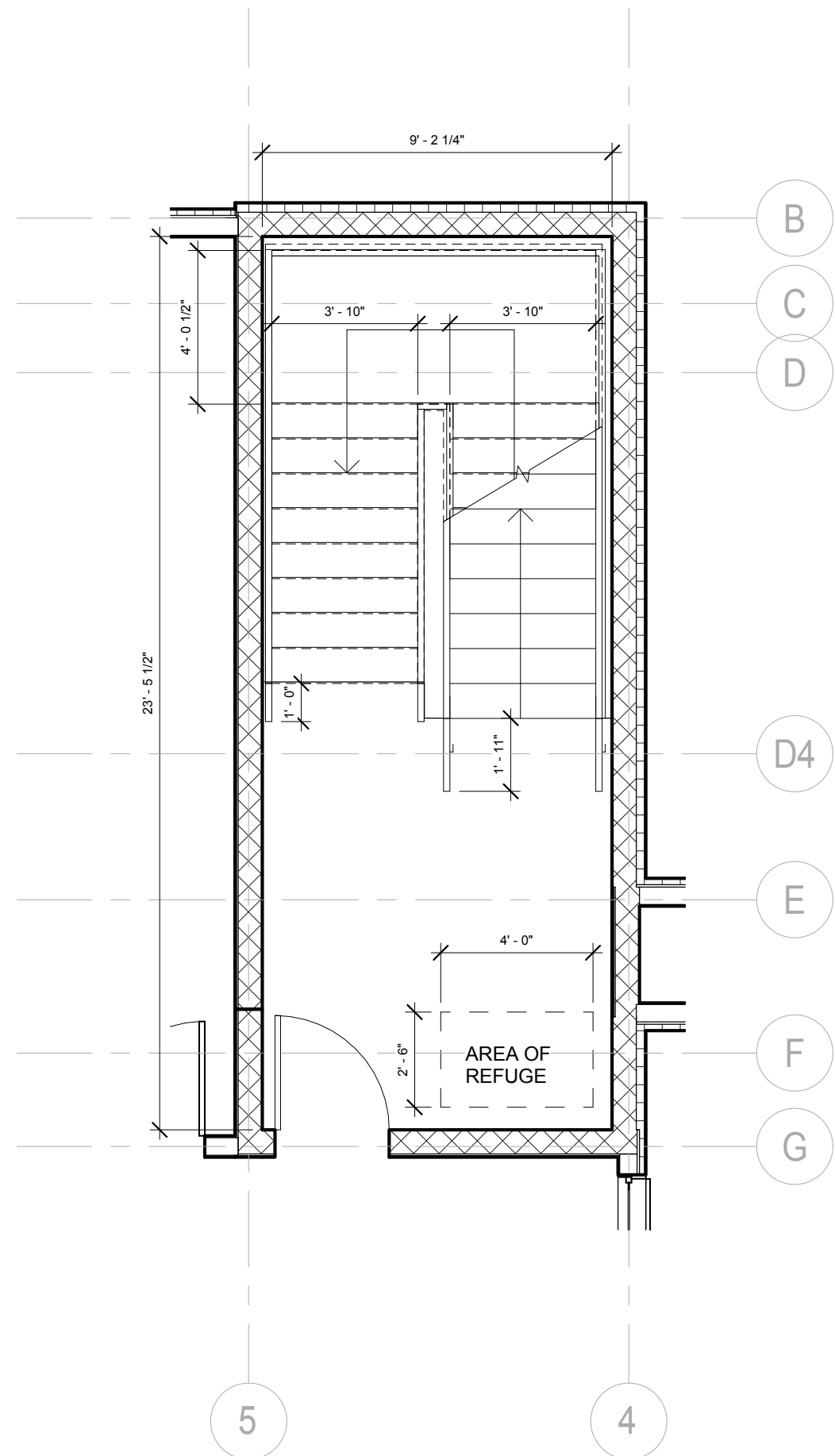
SCALE: 1 1/2" = 1'-0"



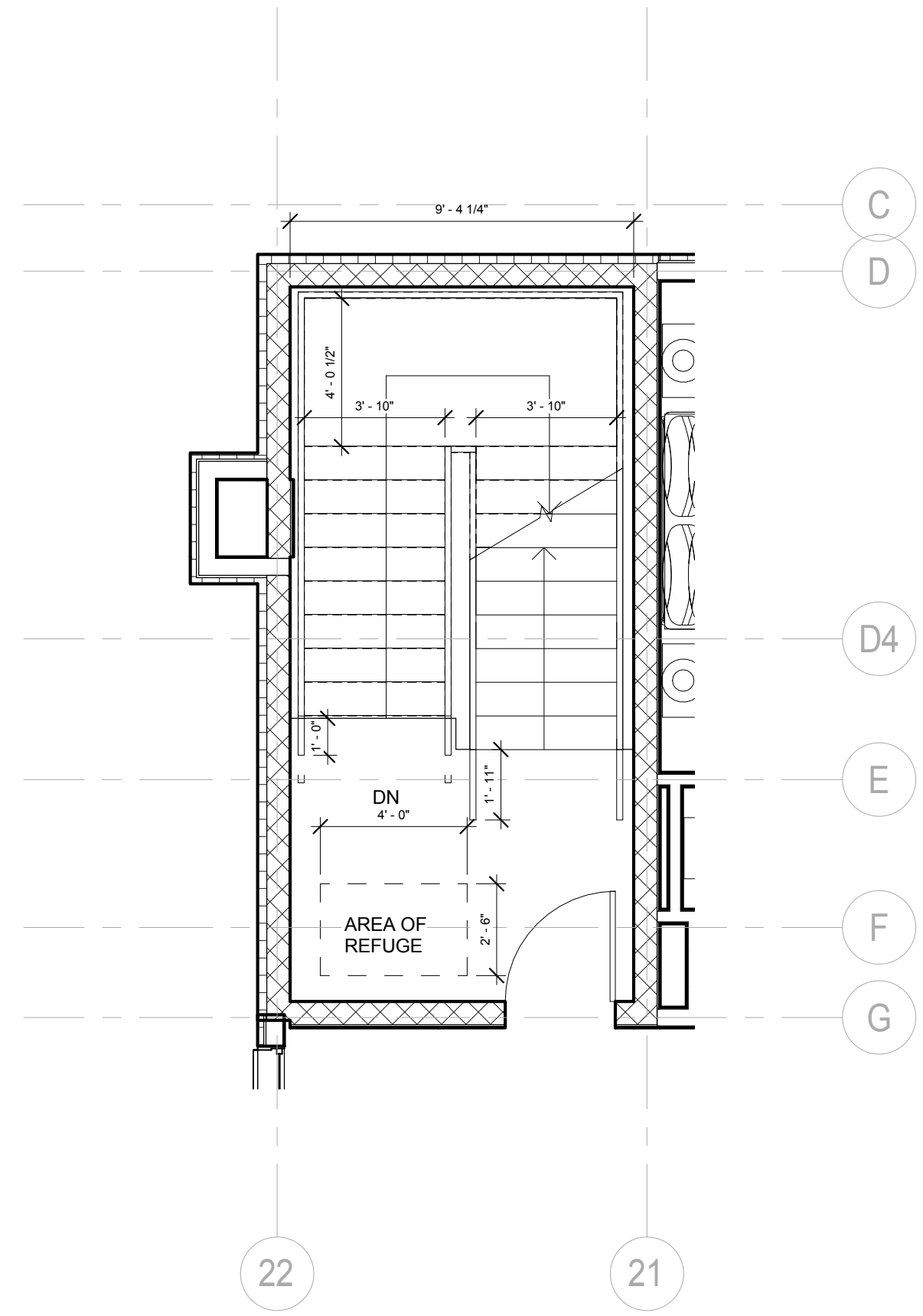
E RAILING DETAIL

0 4" 8" 1'-4"

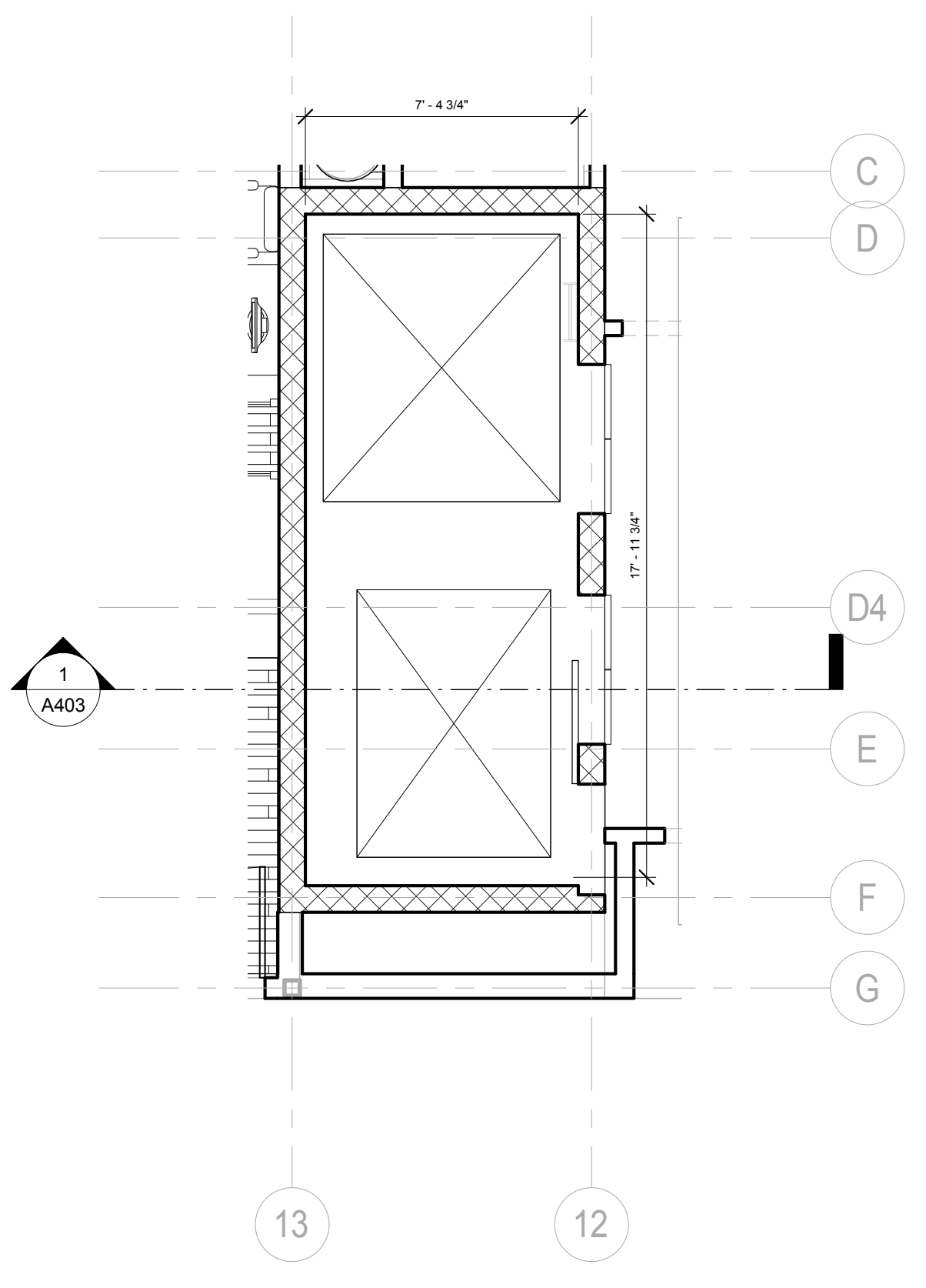
SCALE: 1 1/2" = 1'-0"



1 Stairs #1
1/4" = 1'-0"



3 Stair #2
1/4" = 1'-0"



4 Elevator Shaft
1/4" = 1'-0"