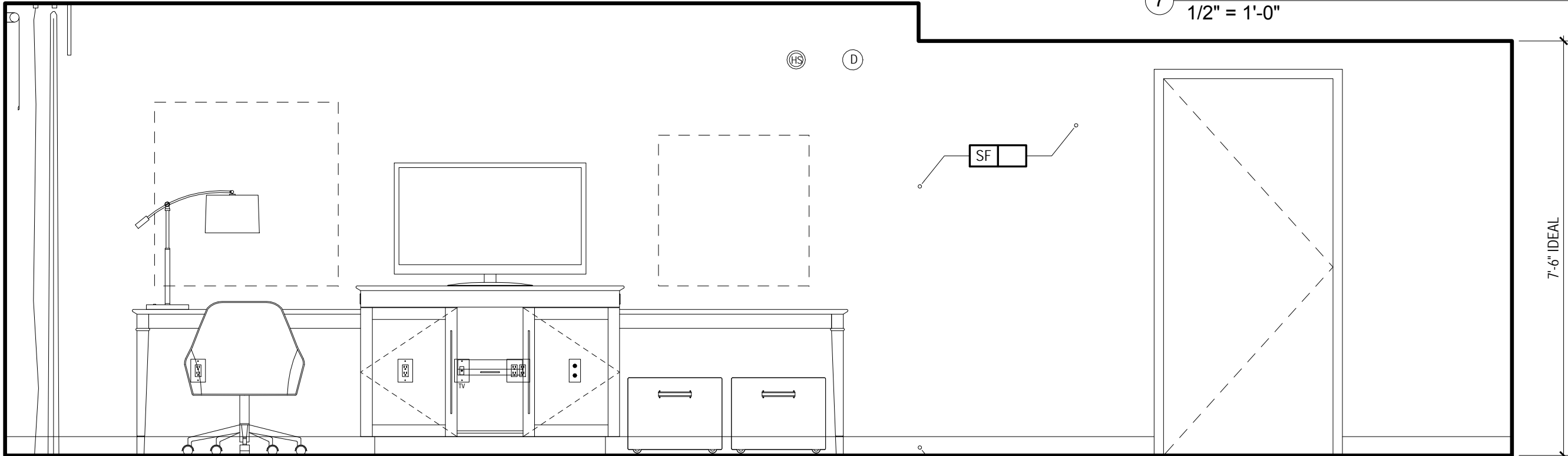
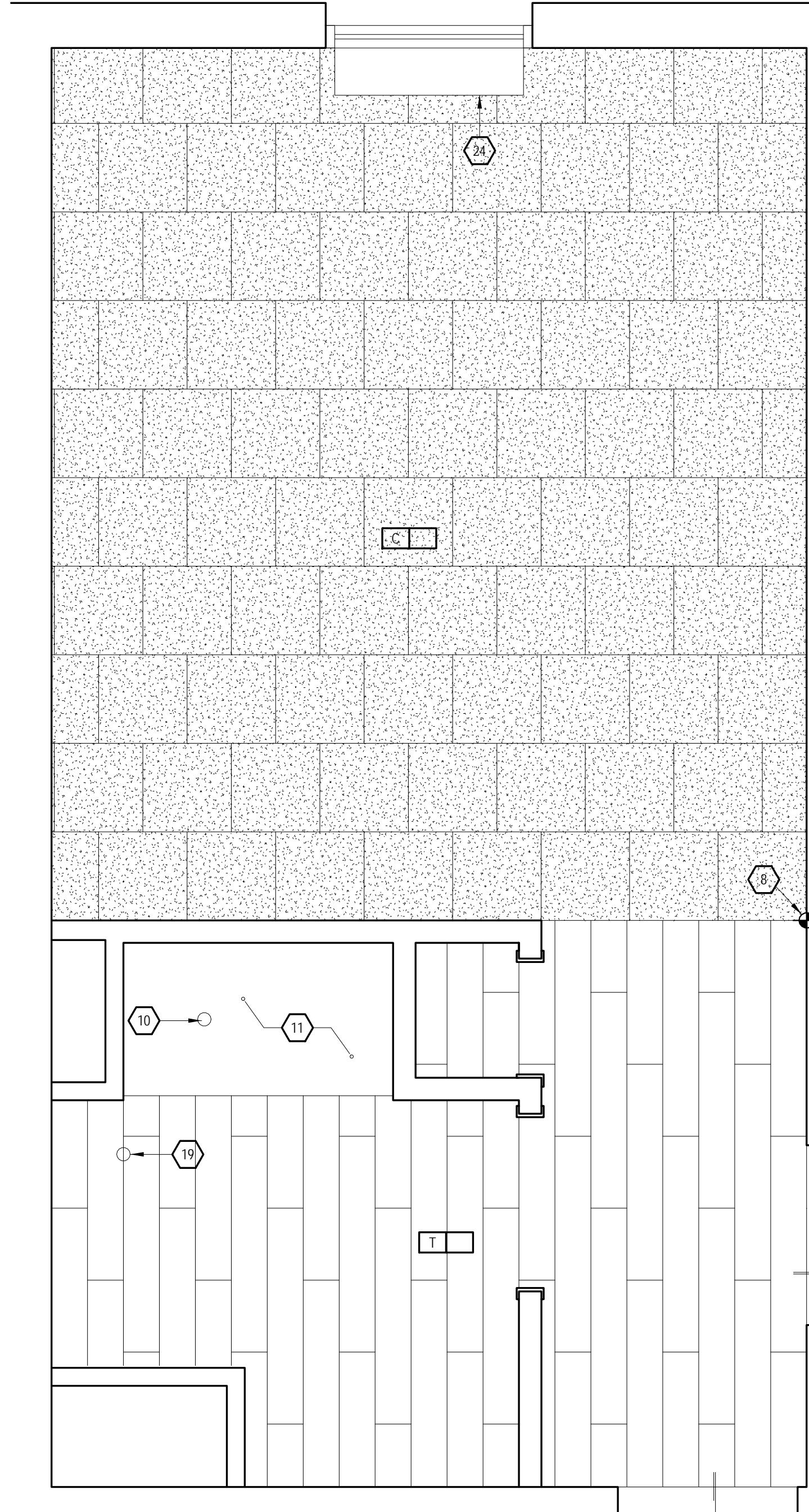


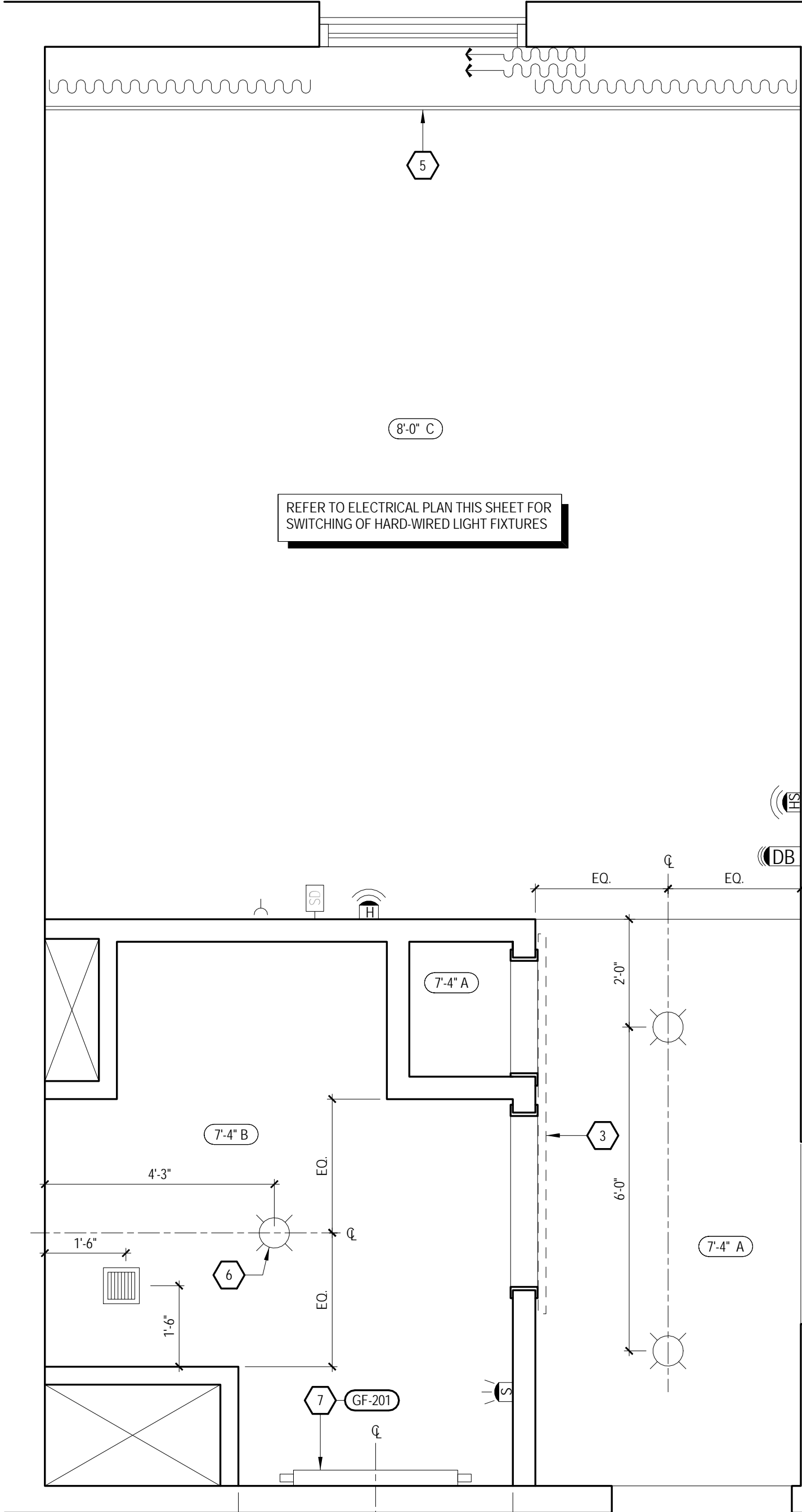
7 INTERIOR ELEVATION - BED WALL
1/2" = 1'-0"



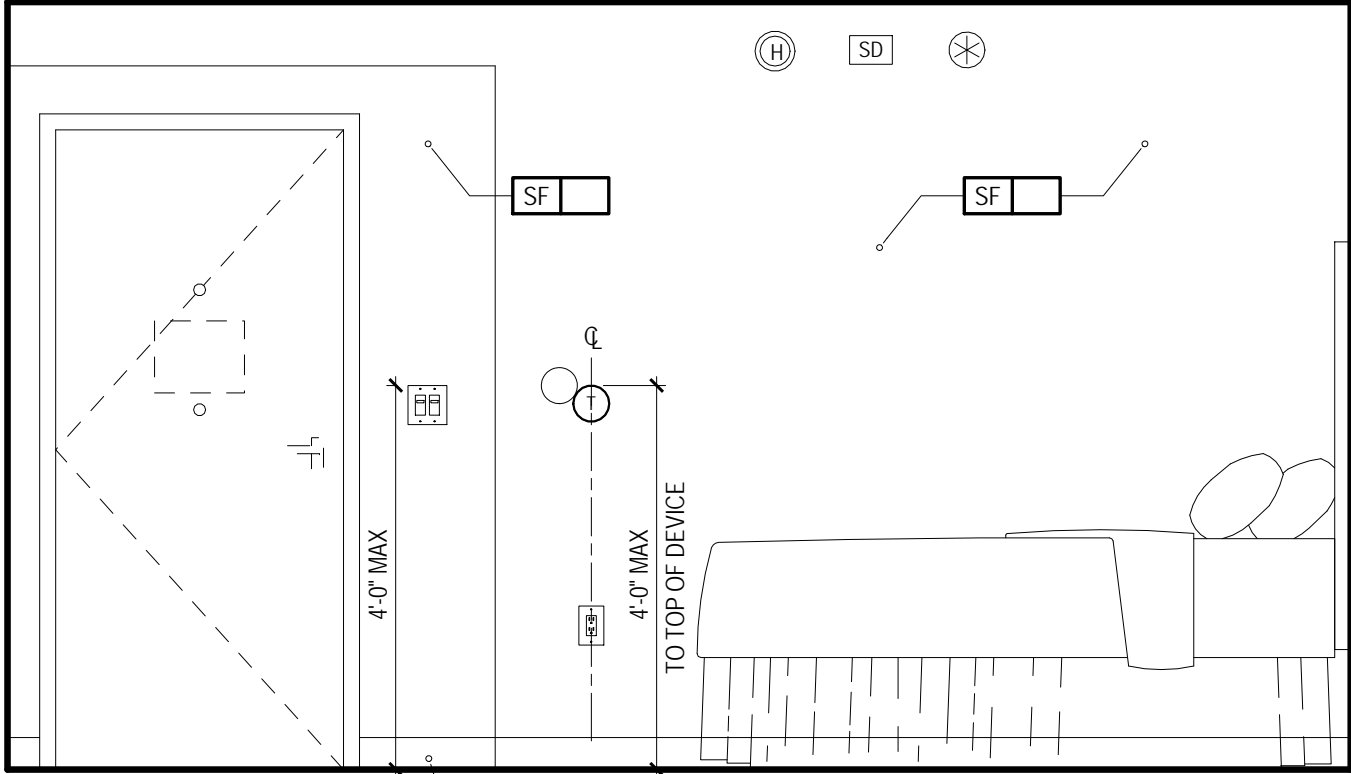
5 INTERIOR ELEVATION - DESK WALL
1/2" = 1'-0"



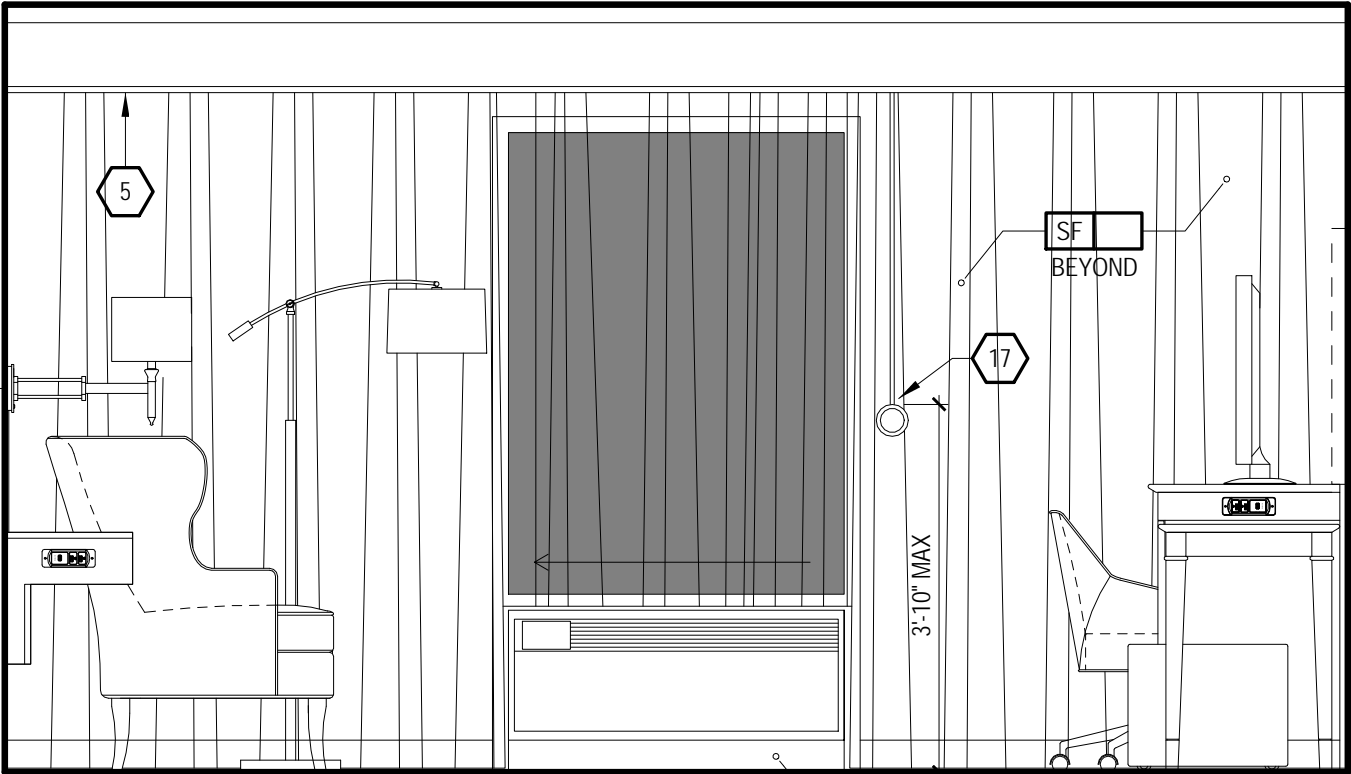
2 FLOOR FINISH PLAN
1/2" = 1'-0"



3 CEILING PLAN
1/2" = 1'-0"



8 INTERIOR ELEVATION - BATHOW WALL
1/2" = 1'-0"



6 INTERIOR ELEVATION - WINDOW WALL
1/2" = 1'-0"

!ALERT!
ELECTRICAL OUTLETS MUST FIT WITHIN THE PARTITIONED SECTION OF MILLWORK AS INDICATED. ELECTRICAL CONTRACTOR MUST STAGGER OUTLETS AS PER NOTES AND DETAILS IN THESE DRAWINGS WHILE MAINTAINING RELATIVE POSITIONS AS SHOWN.

ELECTRICAL OUTLET HEIGHTS (UNO.)
TYPICAL WALL OUTLET 18" A.F.F.
BATHROOM VANTY OUTLET 48" A.F.F.
ACC. BATHROOM VANTY OUTLET 44" A.F.F.

!ALERT!
ACCESSIBLE CLEARANCES INDICATED IN THESE DRAWINGS ARE FOR DESIGN INTENT ONLY. ARCHITECT OF RECORD SHALL BE RESPONSIBLE FOR COMPLIANCE WITH ACCESSIBILITY REQUIREMENTS PER LOCAL AND NATIONAL CODES WHICHEVER IS STRICTER.

KEY NOTES

- HARDWIRED PACKAGED TERMINAL AIR CONDITIONER
- EXTERIOR WINDOW AND ASSOCIATED TREATMENTS
- BARN DOOR ON EXPOSED HARDWARE - REFER TO DOOR SCHEDULE FOR MIRROR INSET APPLICATION
- COMMUNICATING DOOR LOCATION WHEN USED
- ARCHITECTURAL MILLWORK VALANCE PAINT TO MATCH GENERAL WALL COLOR - ANCHOR FROM CEILING
- LIGHTS IN THIS AREA MUST BE DAMP LOCATION RATED AND W/ SHATTER PROOF LENSES
- WALL MOUNTED VANTY LIGHT - PROVIDE JUNCTION BOX COORDINATED WITH FIXTURE
- STARTING POINT OF TILE - BEGIN WITH FULL TILE
- ALL ROOMS TO HAVE HSPA PER HILTON STANDARDS. IF HARD WIRED INTERNET ACCESS IS DESIRED, A RECEPTACLE MUST BE PLACED @ 36" A.F.F.
- SHOWER / BATH DRAIN LOCATION
- NO FINISHES UNDER SHOWER PAN / TUB
- PROVIDE DEDICATED ELECTRICAL CIRCUIT FOR EACH UNDERCOUNTER APPLIANCE
- DOORBELL ON/OFF SWITCH FOR COMMUNICATION
- FEATURE ROOMS ONLY - SIGNAGE AS REQUIRED
- THRESHOLD - REFER TO STANDARDS MANUAL
- SHOWER INDICATED BATH TUBS MAY BE SUBSTITUTED - REFER TO STANDARDS
- DASHED BOXES AND CIRCLES REPRESENT ACCESSIBLE CLEAR FLOOR AREAS - REFER TO ACCESSIBLE PLANS SHEET FOR ADDITIONAL INFORMATION
- ACCESSIBLE DRAPEY CONTROL
- DESK MUST PROVIDE MIN. 30" WIDE CLEAR FLOOR SPACE AND A MIN. 27" HIGH KNEE CLEARANCE
- PROVIDE DRAIN IN THIS LOCATION IN GUEST BATHS EQUIPPED WITH ROLL IN SHOWERS. FISH DRAIN AT A 6" RADIUS (1/48 SLOPE MAX), PROVIDE TRAP PRIMER
- FLAT SCREEN TV
- CLOCK
- TELEPHONE
- CENTER SCOOCE ABOVE NIGHTSTAND
- EDGE OF PTAC SKIRT AT FLOOR

FURNISHING LEGEND:

- GF-100 ACTIVITY CHAIR
- GF-101 OTTOMAN
- GF-102 SOFA SLEEPER
- GF-103 SINGLE ARM SOFA SLEEPER
- GF-104 SINGLE ARM CHAISE
- GF-105 LOUNGE CHAIR
- GF-201 GUESTROOM VANTY LIGHT
- GF-202 BEDSIDE TABLE LAMP AT NIGHTSTAND
- GF-303 SINGLE NIGHTSTAND SCOOCE
- GF-204 DOUBLE NIGHTSTAND SCOOCE
- GF-305 DESK LAMP
- GF-306 FLOOR LAMP
- GF-300 STREAMLINE UNIT
- GF-301 KING HEADBOARD
- GF-302 QUEEN HEADBOARD
- GF-303 DOUBLE HEADBOARD
- GF-304 NIGHTSTAND
- GF-305 NIGHTSTAND WITH POWER
- GF-306 DOUBLE NIGHTSTAND WITH POWER
- GF-307 C-TABLE
- GF-308 68" VANTY AT GUEST BATH
- GF-309 58" VANTY AT GUEST BATH
- GF-310 ADA VANTY AT GUEST BATH
- GF-311 STREAMLINE DIVIDER UNIT
- GF-312 ADA STREAMLINE UNIT
- GF-313 ADA STREAMLINE DIVIDER UNIT
- GF-314 ADA STREAMLINE UNIT
- GF-315 ADA STREAMLINE DIVIDER UNIT
- GF-316 ADA VANTY AT GUEST BATH
- GF-317 STREAMLINE DESK UNIT
- GF-400 WINDOW TREATMENT WITH PTAC
- GF-401 WINDOW TREATMENT WITHOUT PTAC
- GF-402 ROLLER SHADE
- GF-500 ARTWORK AT GUESTROOM
- GF-501 ARTWORK AT GUEST BATH
- GF-502 ARTWORK AT SOFA IN SUITES
- GF-503 FRAMED MIRROR AT VANTY
- GF-504 FRAMED MIRROR AT ADA VANTY
- GF-601 KING BED SET
- GF-602 KING BED BASE
- GF-603 ADA KING BED SET
- GF-604 ADA KING BED BASE
- GF-605 QUEEN BED SET
- GF-606 QUEEN BED BASE
- GF-607 ADA QUEEN BED SET

FINISH LEGEND:

- B BASE
- C CARPET
- MIR MIRROR
- PT PAINT
- ST STONE
- SF SPECIAL FINISH
- T TILE
- VCT VINYL COMPOSITE TILE
- WC WALL COVERING
- WD WOOD FINISH

CEILING LEGEND:

- A PRIME & PAINTED GYPSUM BOARD
- B PRIME & PAINTED GYPSUM BOARD - MOISTURE RESISTANT
- C UNDERSLIDE OF FLOOR/ROOF SYSTEM - PRIME & PAINTED - REFER TO STANDARDS

ELECTRICAL LEGEND:

- DUPLX OUTLET
- QUADRUPLY OUTLET
- GFI OUTLET
- TELEPHONE OUTLET
- TV OUTLET
- SWITCH
- REMOTE THERMOSTAT
- SMOKE DETECTOR
- STROBE (IN C.F. ROOMS ONLY)
- FIRE HORN/STROBE (IN C.F. ROOMS ONLY, OMIT FIRE HORNS WHEN THESE ARE USED)
- FIRE HORN (NON-C.F. ROOMS)
- SIDE WALL SPRINKLER HEAD
- DOORBELL LIGHT (C.F. ROOMS ONLY)
- HSPA (WIRED WHERE APPLICABLE)
- JUNCTION BOX
- EXHAUST FAN
- LIGHT AT CEILING
- DOORBELL MOUNT AT 48" AFF TO CENTER OF BUTTON (C.F. ROOMS ONLY)

CEILING LAYOUT LEGEND:

- CENTER FIXTURE IN SPACE
- CENTER THE FIXTURE IN SPACE IDENTIFIED BY DIAGONAL LINE
- ALIGN FIXTURES
- ALIGN FIXTURES ALONG CENTERLINE SHOWN
- CENTER OVER
- CENTER FIXTURE OVER CENTERLINE OF ADJACENT CONSTRUCTION

GENERAL NOTES:

- WALLS BETWEEN ADJACENT ROOMS - ELECTRICAL OUTLET LOCATIONS, INCLUDING TV AND TELEPHONE OUTLETS, SHALL BE OFFSET 6" MIN. HORIZONTALLY - BACK TO BACK OUTLETS ARE NOT ALLOWED.
- COMMUNICATION FEATURE ROOMS SHALL BE EQUIPPED WITH VISIBLE FIRE ALARMS AND NOTIFICATION DEVICES FOR DOOR KNOCKBELL AND TELEPHONE.
- COMMUNICATION FEATURE ROOM MUST HAVE A VISIBLE NOTIFICATION DEVICE FOR THE TELEPHONE.
- ACCESSIBLE ROOMS SHALL BE EQUIPPED WITH TOGGLE-TYPE SWITCHES.



6800 S Creek Rd, Charlotte, NC 28277
Ph: (704) 625-6554 Fax: (704) 919-5822
EMAIL: ashish@mishraarch.com
WEB: www.mishraarch.com

STRUCTURAL:
David Lane Beard & Associates, Inc.
11220 Elm Lane, Suite 201
Charlotte, NC 28277
Phone: (704) 542-7199
Fax: (704) 542-7195
Email: lwright@wspninc.com

ELECTRICAL:
Ritter Engineering
1043 Arroyo Vista Lane
Matthew, NC 28014
Phone: (704) 516-0385
Fax: (704) 644-1464
Email: shane@rittereng.com

MECHANICAL:
Shultz Engineering Group, P.C.
212 North McDowell St., Suite 204
Charlotte, NC 28204
Phone: (704) 334-7363
Fax: (704) 347-0093
Email: don@shultzeg.com

REVISIONS		
No.	Date	Description

Information contained on this drawing and in all digital files associated is authorized for use on the project named herein only and is the property of MISHRA ARCHITECTURE PLLC and may not be reproduced in any manner without express written or verbal permission from authorized individuals. Original drawing is 24"x36" and scales are as indicated. ©2013 MISHRA ARCHITECTURE PLLC



KEY PLAN

Southern Hospitality Services

Hampton Inn and Suites

5400 I-20 & Frontage Rd.
Monroe, LA 71201

Drawing Title

Enlarged Acc. King Plans
Elevations

Phase
Construction Documents

Project No.	12-111	Sheet No.	A507
Prepared by	Author	Checked by	Checker
Date	Sept. 16, 2013		

Released for
PERMIT ONLY