



**CIVIL:**  
David Lane Beard & Associates, Inc.  
105 Commercial Parkway  
West Monroe, LA 71294  
Phone: (318) 388-3227  
Email:fgadberry@dlbengineering.com

WGPM, Inc.  
11220 Elm Lane, Suite 201  
Charlotte, NC 28277  
Phone: (704) 542-7199  
Fax: (704) 542-7195  
Email: lwright@wgpminc.com

Ritter Engineering  
1043 Arroyo Vista Lane  
Matthew, NC 28014  
Phone: (704) 516-0385  
Fax: (704) 644-1464  
Email: [shane@rittereng.com](mailto:shane@rittereng.com)

Shultz Engineering Group, P.C.  
212 North McDowell St., Suite 204  
Charlotte, NC 28204  
Phone: (704) 334-7363  
Fax: (704) 347-0093  
Email: don@shultzeg.com

Information contained on this drawing and in all digital files associated is authorized for use on the project named herein only and is the property of MISHRA ARCHITECTURE PLLC and may not be reproduced in any manner without express written or verbal permission from authorized individuals. Original drawing is 24"x36" and scales are as indicated. © 2013 MISHRA ARCHITECTURE PLLC



## Hampton Inn and Suites

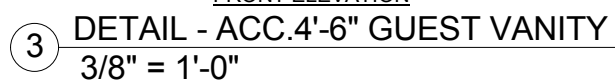
Drawing Title

Bathroom Accessory Legend  
Typ. Details

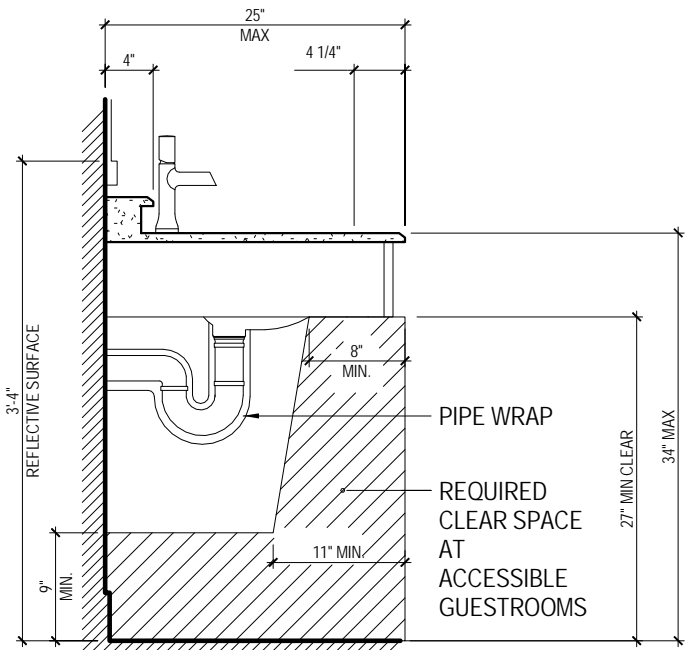
A550

Released for  
PERMIT ONLY

Hampton Inn and Suites



VER 'BACK' WALL



5 ACC. VANITY DETAIL  
3/4" = 1'-0"


$$1/2'' = 1'-0''$$
$$1/2'' = 1'-0''$$
$$1/2'' = 1'-0''$$

NOTE: ALL GRAB BARS AND SEATS MUST BE  
BLOCKED/ RE-INFORCED TO WITHSTAND  
ACCESSIBILITY REQUIRED LOAD LIMITS

NOTE: ALL GRAB BARS AND SEATS MUST BE  
BLOCKED / REINFORCED TO WITHSTAND  
ACCESSIBILITY REQUIRED LOAD LIMITS





**A** HOTEL STANDARD SHOWER HEAD

**B** HAND HELD SHOWER HEAD ATTACHED TO WALL WITH COMPATIBLE MOUNTING POST CONNECTED TO 90° PLUMBING ELBOW (CHROME W/ ESCUTCHEON FACING DOWN) WITH MIN. 5/8" SPT VINYL HOSE (WHITE) - PROVIDE POSITIVE SHUT OFF SWITCH - UNIT SHALL DELIVER WATER AT 120" MAXIMUM - HOSE SHALL BE USABLE IN A HORIZONTAL OR VERTICAL POSITION TO ANY POSITION AT AN ADJUSTABLE BAR

**C** DIVERTER FAUCET WITH PERMANENT LABELS  
INDICATING OPERATION DIRECTION - WHEN FAUCET 1 "POINTING" TOWARDS STANDARD SHOWER HEAD (AS INDICATED) IT OPERATES THE STANDARD SHOWER HEAD, WHEN POINTING TOWARDS THE HAND-HELD SHOWER HEAD IT OPERATES THE HAND-HELD SHOWER HEAD - LABELS SHALL READ: "UPPER SHOWER HEAD" & "HAND HELD SHOWER HEAD" AND BE PERMANENTLY AFFIXED TO WALL

**D** CONTROLS MOUNTED OFF CENTER TOWARDS SHOWER SEAT

**E** SHOWER SEAT (FOLDING)  
-- REFER TO TOILET ACCESSORY SCHEDULE

|   |   |
|---|---|
|  | GRAB BARS - TYP.<br>-- REFER TO MOUNTING HEIGHTS  |
|  | ACCESSIBLE "REACH" MAXIMUM HEIGHT   |
|  | SOAP DISHES CENTERED AS INDICATED OR PER LAYOUT   |
|  | OPERATION: WATER FLOWS FROM MIXING VALVE TO DIVERTER FAUCET THEN:<br>- ACTIVATION OF DIVERTER FAUCET SWITCH BETWEEN HAND HELD AND STANDARD SPOUT/SHOWER |

**A** HOTEL STANDARD SHOWER HEAD

**B** HAND HELD SHOWER HEAD W/60" HOSE ATTACHED TO ADJUSTABLE HEIGHT BAR. MOUNT BAR TO ALLOW SHOWER HEAD TO BE PLACED WITHIN ACCESSIBLE REACH RANGE. MOUNT ADJUSTABLE BAR SO AS NOT TO CONFLICT WITH GRAB BAR - PROVIDE POSITIVE SHUT OFF SWITCH - UNIT SHALL DELIVER WATER AT 120°F MAXIMUM

**C** DIVERTER FAUCET WITH PERMANENT LABELS  
INDICATING OPERATION DIRECTION - WHEN FAUCET  
 'POINTING' TOWARDS FOOT/FRONT (AS INDICATED) IT  
 OPERATES THE TUB SPOUT AND STANDARD SHOWER  
 HEAD, WHEN 'POINTING' TOWARDS THE HEAD/REAR  
 TUB IT OPERATES THE HAND HELD SHOWER HEAD -  
LABELS SHALL READ: "TUB/UPPER SHOWER HEAD"  
 "HAND HELD SHOWER HEAD" AND BE PERMANENTLY  
 AFFIXED TO WALL.

**D** CONTROLS MOUNTED OFF CENTER TOWARDS OPEN  
EDGE OF TUB

- (F) GRAB BAR - TYP.
  - REFER TO MOUNTING HEIGHTS
- (G) ACCESSIBLE "REACH" MAXIMUM HEIGHT
- (L) SOAP DISHES
- (M) OPERATION: WATER FLOWS FROM MIXING DIVERTER FAUCET BACK THEN TO TUB SHOWER HEAD:
  - ACTIVATION OF STANDARD DIVERTER FAUCET SPOUT OR MIXING VALVE OPERATES STANDARD SHOWER HEAD
  - ACTIVATION OF DIVERTER FAUCET SWITCH BETWEEN HAND HELD AND STANDARD TUB SPOUT/SHOWER

**N** PROVIDE BLOCKING AS NECESSARY

NOTE: ALL GRAB BARS AND SEATS MUST BE BLOCKED / REINFORCED TO WITHSTAND

 CONTROLS MOUNTED OFF CENTER TOWARDS SHOWER SEAT

4/14/2014 3:19:24 PM