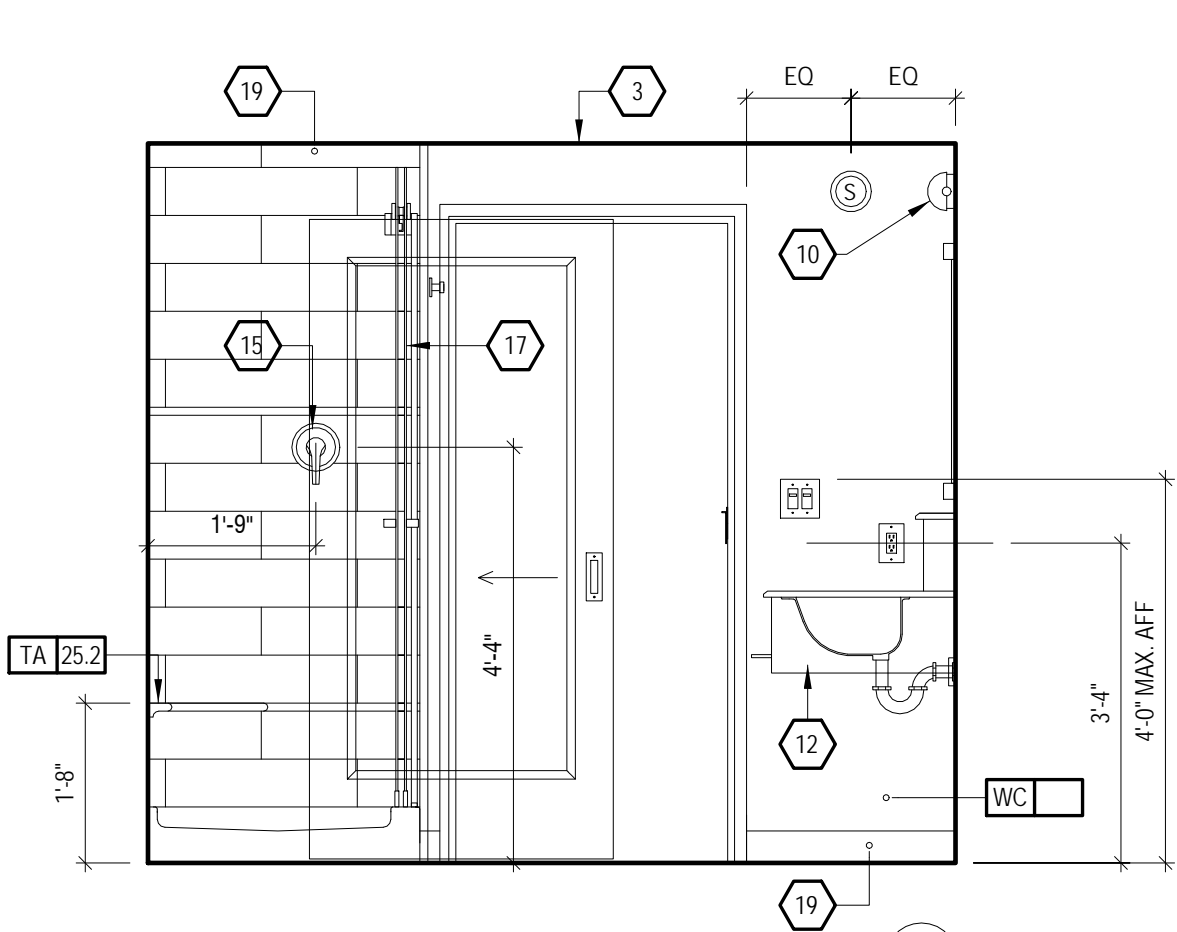
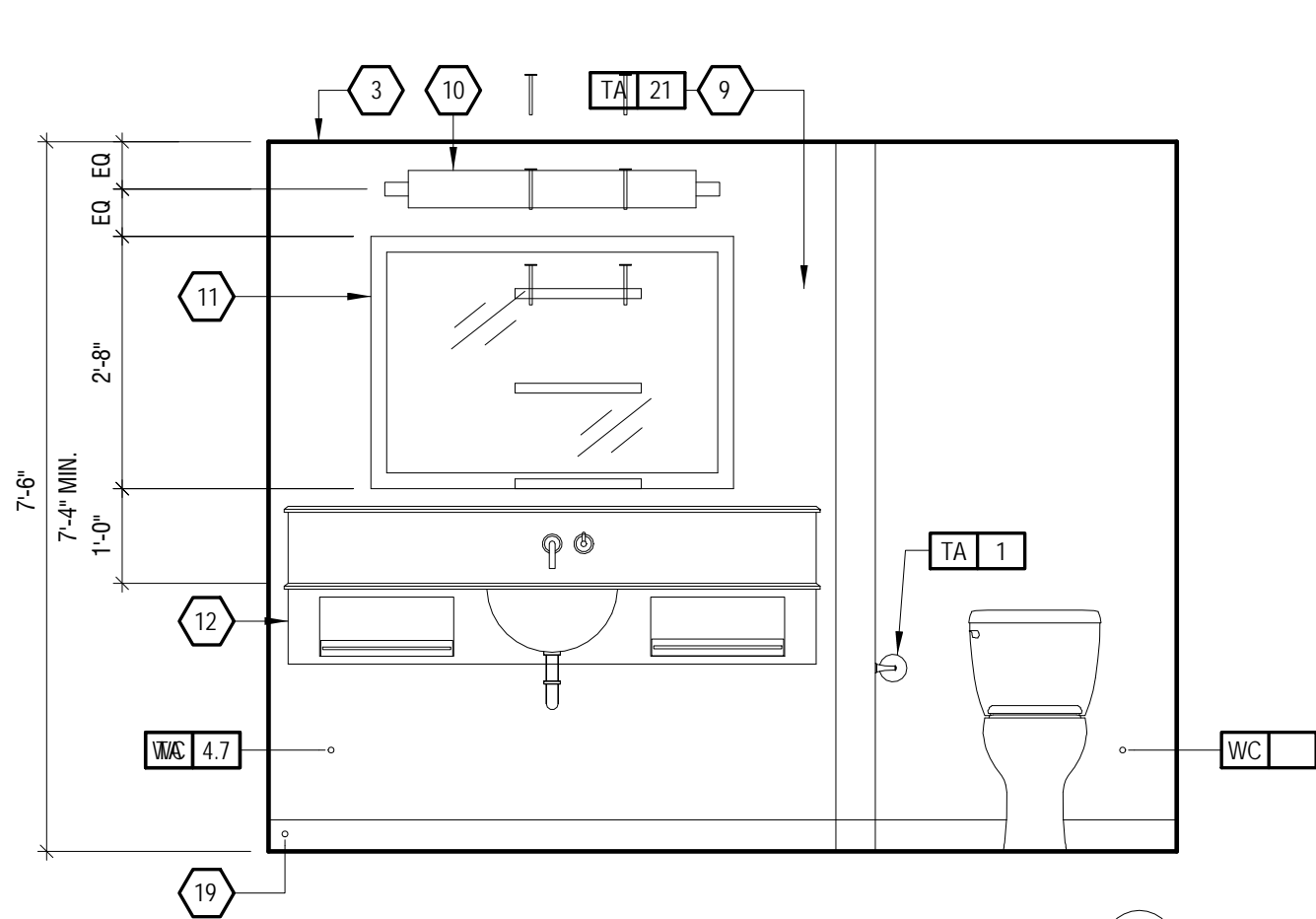


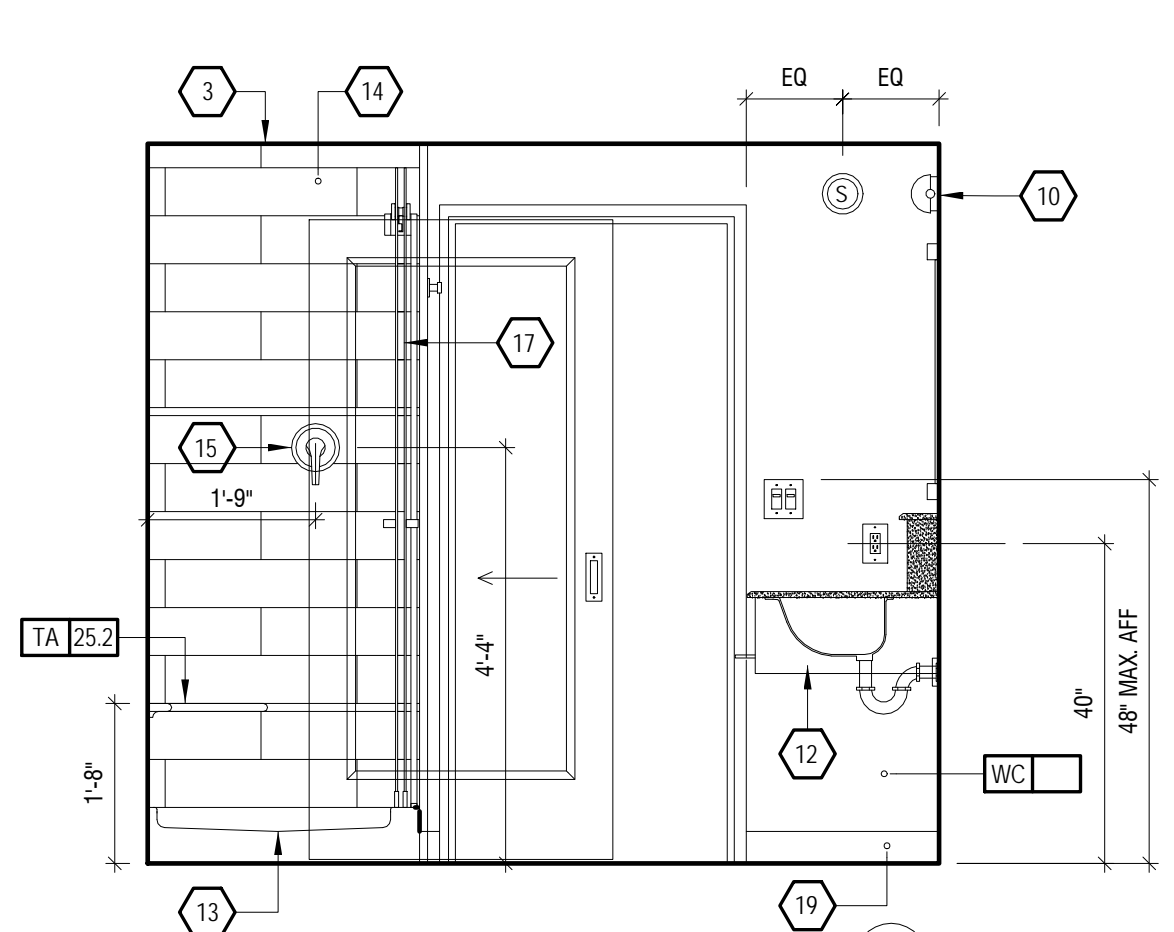
A



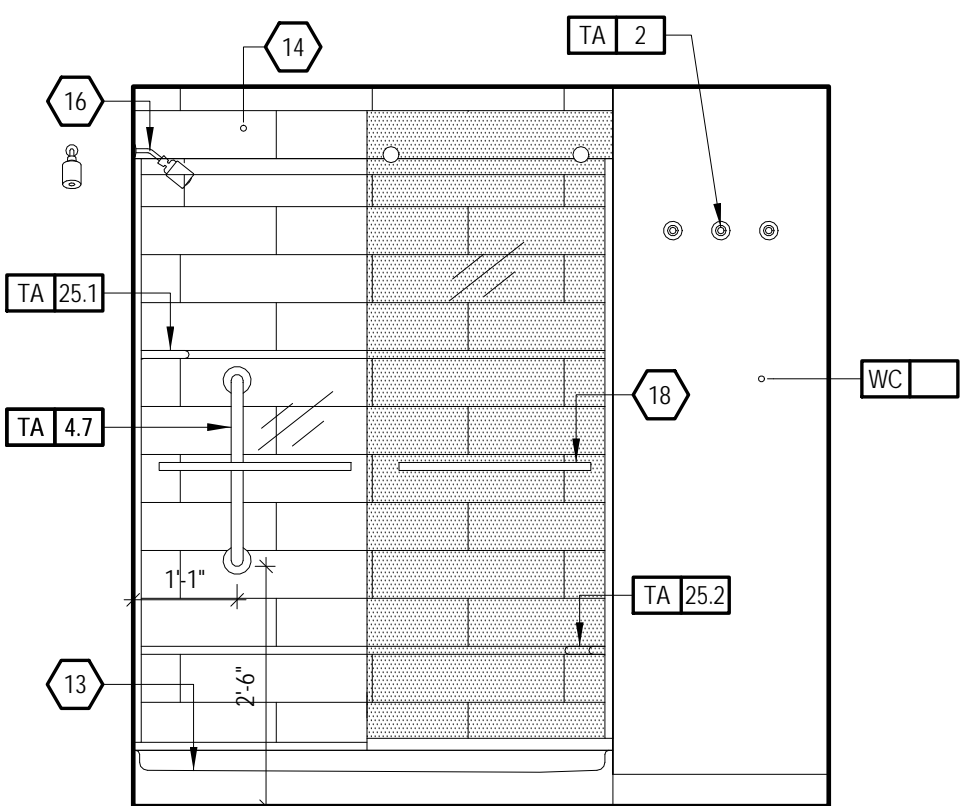
B



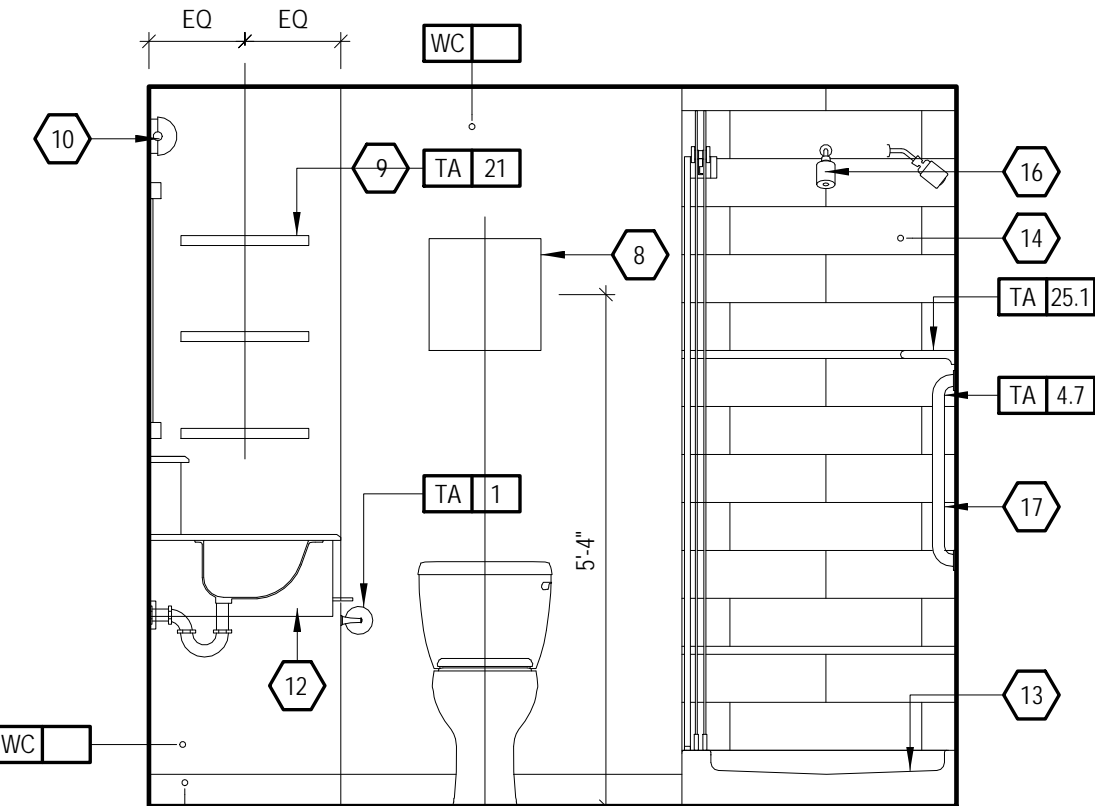
A



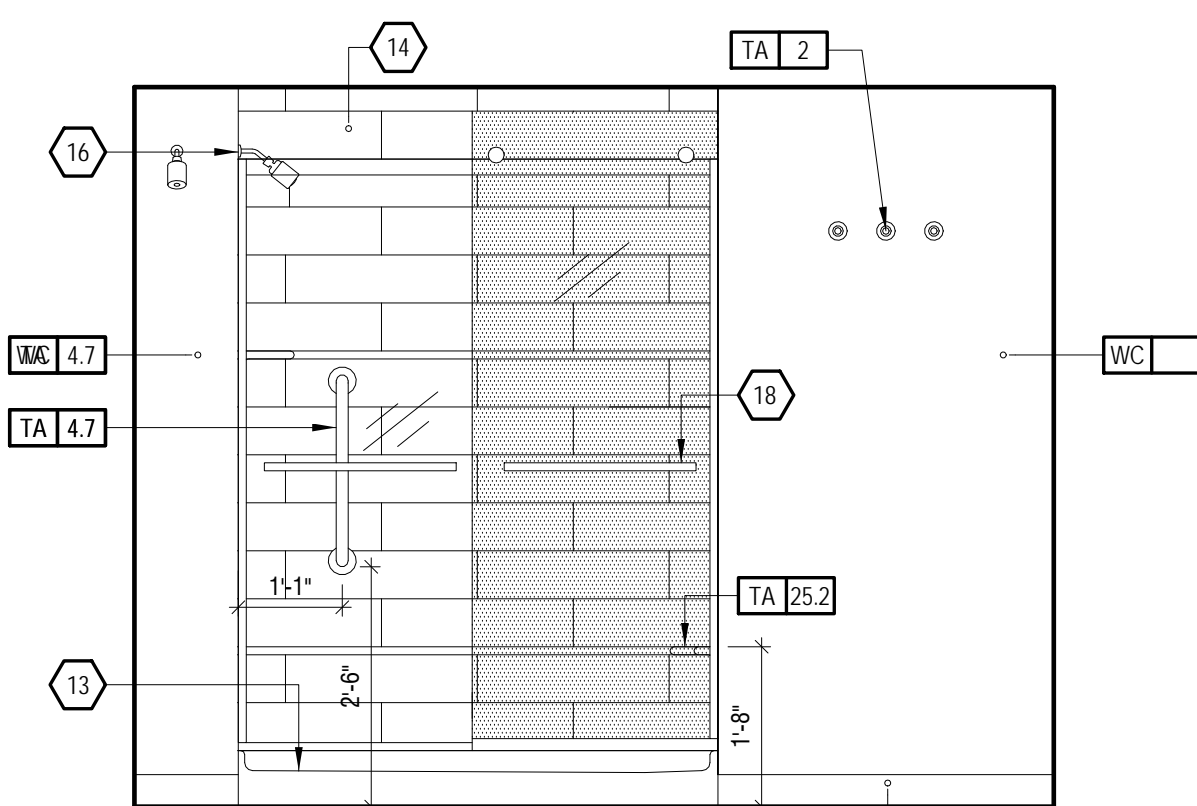
B



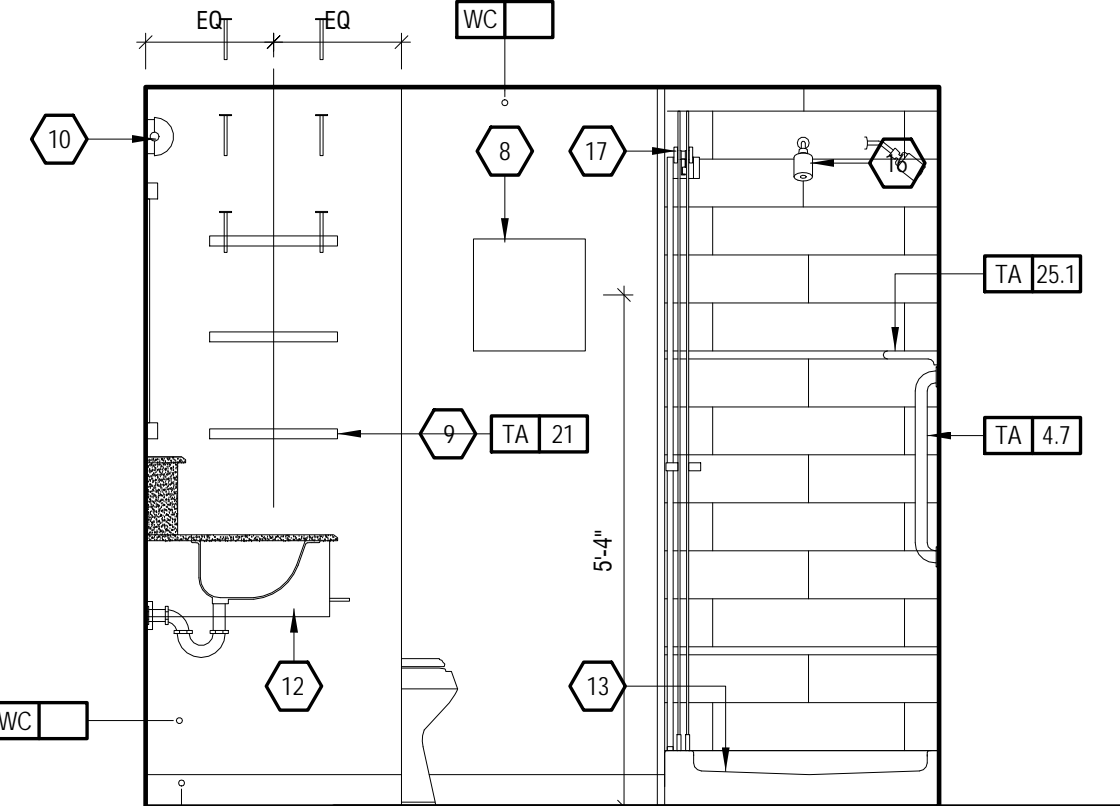
C



D



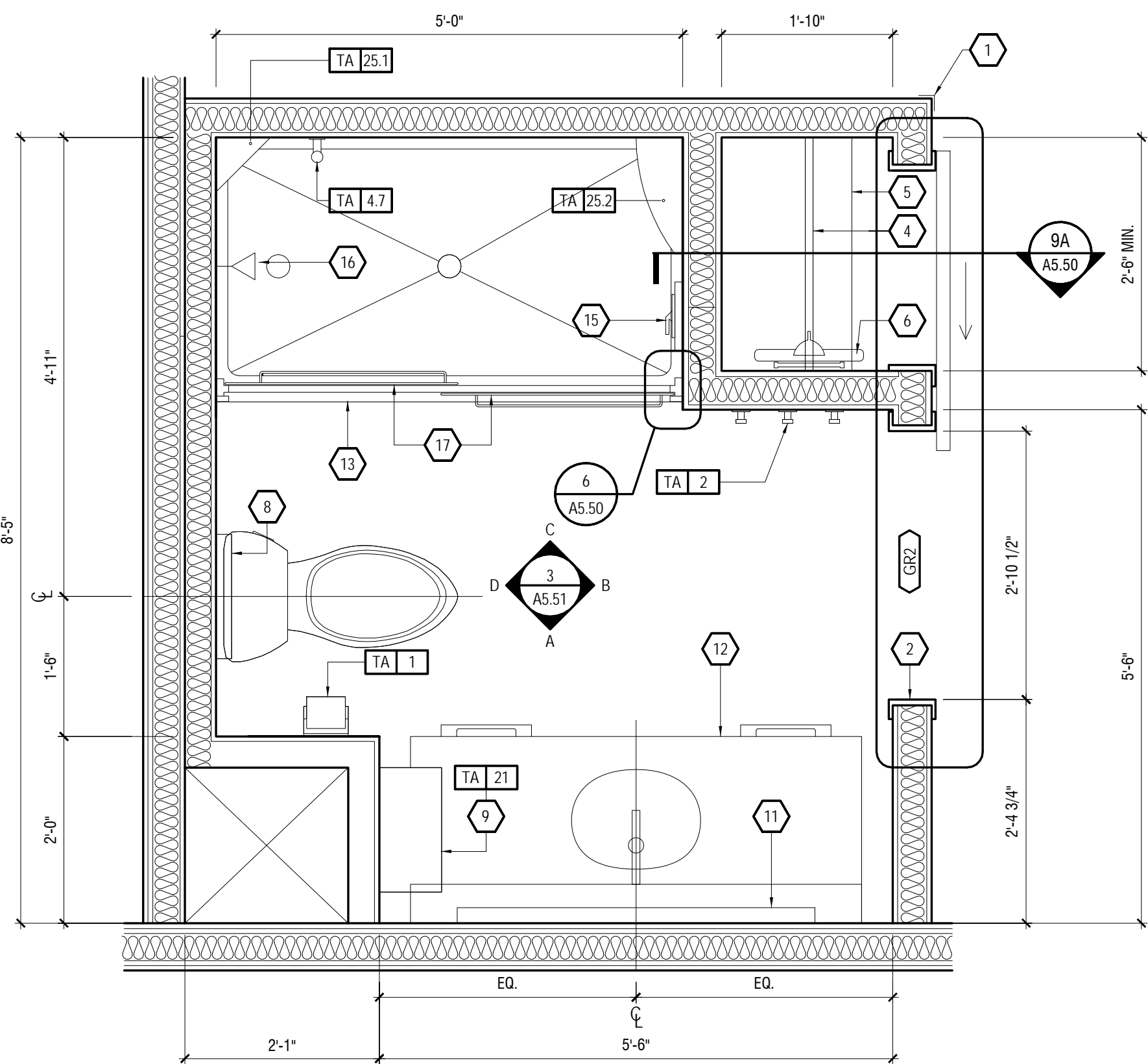
C



D

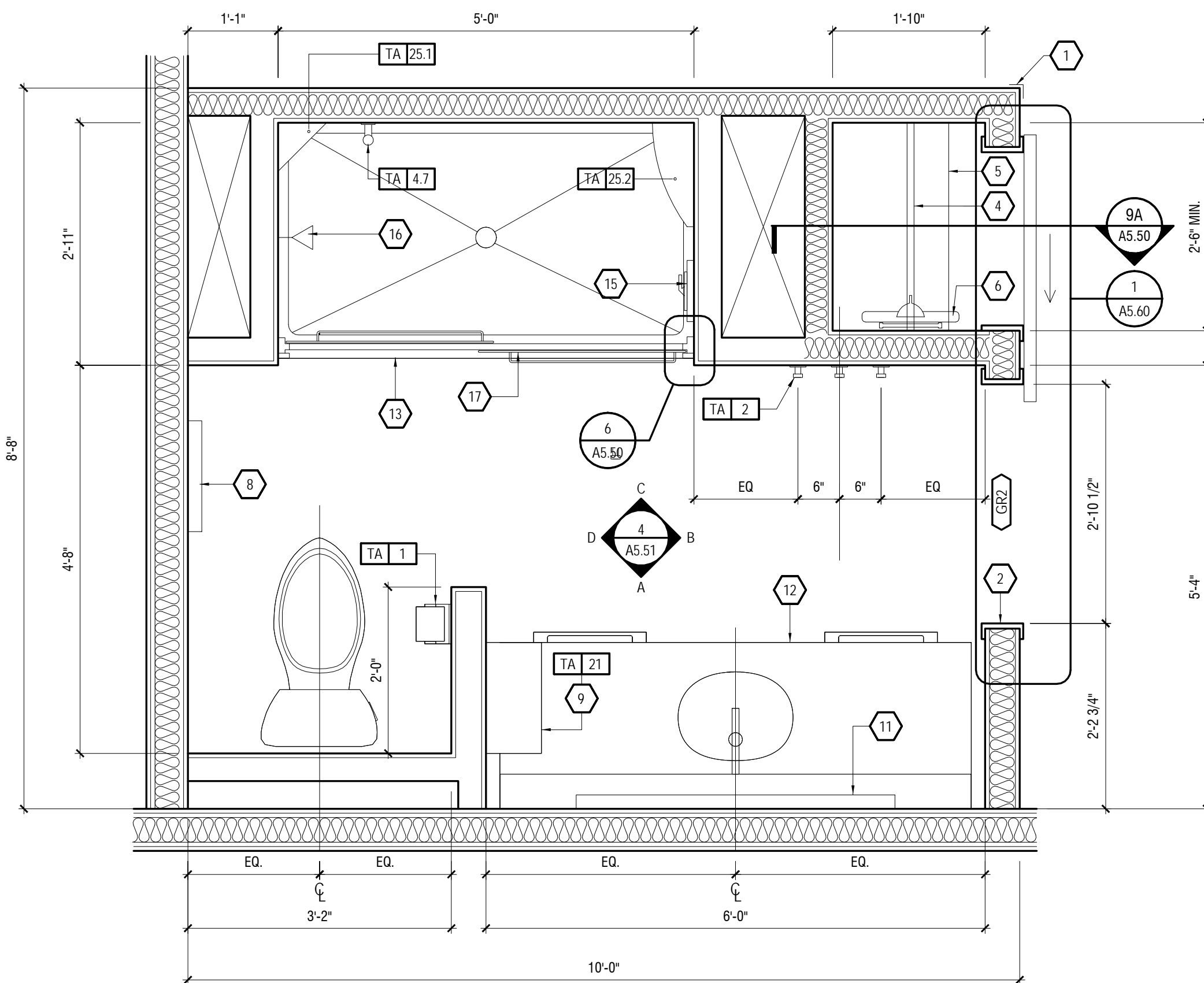
INTERIOR ELEVATIONS - TYPICAL 12'-0"
3 GUESTROOM BATH
1/2" = 1'-0"

INTERIOR ELEVATIONS - TYPICAL 14'-0"
4 GUESTROOM BATHROOM W/ SHOWER
1/2" = 1'-0"



ENLARGED PLAN - TYPICAL 12'-0"
2 GUESTROOM BATHROOM W/ SHOWER
1/2" = 1'-0"

NOTE:
REFER TO SHEET A5.50 FOR RESTROOM ACCESSORY
LEGEND AND ACCESSORY HTS.



ENLARGED PLAN - TYPICAL 14'-0"
1 GUESTROOM BATHROOM W/ SHOWER
1/2" = 1'-0"

- KEYNOTES
1. FULL HEIGHT CORNER GUARD, NO EXPOSED FASTENERS, COLOR TO COORDINATE WITH WALL CASING OPENING - PAINTED
 2. CLOSET ROD TURNING 770 1/2 CHR. FLANGE #735 CHR. MFG BY KNAPE AND VOGT #616-459-3311
 3. KNAPEANDVOGT COM. MOUNT AT 60" A.F.F. IN TYP. GUESTROOM AT ACCESSIBLE GUESTROOMS PROVIDE HALF THE CLOSET ROD LENGTH AT 44" A.F.F. PROVIDE ACCESSIBLE TUBING ON MOST ACCESSIBLE SIDE OF CLOSET - REFER TO CLOSET DETAIL
 4. TYP. GUESTROOM CLOSET WOOD SHELF W/ HARDWOOD EDGE @ 40" A.F.F. IN ACCESSIBLE GUESTROOMS WITH MOBILITY FEATURES, PROVIDE HALF THE CLOSET SHELF @ 48" A.F.F. PROVIDE ACCESSIBLE HANG ROD ON MOST ACCESSIBLE SIDE OF CLOSET - REFER TO CLOSET DETAIL
 5. TYP. GUESTROOM CLOSET WOOD SHELF W/ HARDWOOD EDGE @ 40" A.F.F. IN ACCESSIBLE GUESTROOMS WITH MOBILITY FEATURES, PROVIDE HALF THE CLOSET SHELF @ 48" A.F.F. PROVIDE ACCESSIBLE HANG ROD ON MOST ACCESSIBLE SIDE OF CLOSET - REFER TO CLOSET DETAIL
 6. IRONING BOARD
 7. NOT USED
 8. ARTWORK
 9. FLOATING TOWEL SHELVES (TA 21) - REFER TO DETAIL 7/14/20
 10. WALL MOUNTED LIGHT FIXTURE
 11. FRAMED MIRROR
 12. TYPICAL GUEST VANITY - REFER TO GUEST ROOM DRAWINGS FOR GUEST ROOM FURNITURE SPECIFICATIONS
 13. APPROVED SHOWER PAN - REFER TO HAMPTON STANDARD
 14. APPROVED SHOWER SURROUND - REFER TO HAMPTON STANDARDS
 15. CONTR. VALVE
 16. SHOWER HEAD, ROUGH IN HEIGHT BETWEEN 6'-10" AND 7'-0" ABOVE FINISH
 17. SLIDING GLASS SHOWER DOOR - CUSTOM HEIGHT SHOWER BARS (DRAWERS) PULL TO BE USED AS SECONDARY TOWEL HOLDER
 18. VINYL BASE
 19. BATHTUB - REFER TO HAMPTON STANDARDS
 20. FLUSH LEVER MUST BE POSITIONED ON OPEN SIDE OF WATER CLOSET AS SHOWN
 21. MIRROR COMPLIANT WITH ACCESSIBILITY RECS.
 22. MOUNT BOTTOM OF GLASS AT 40" MAX. AFF
 23. TYPICAL ACCESSIBLE GUEST VANITY - REFER TO GUEST ROOM DRAWINGS FOR GUEST ROOM FURNITURE SPECIFICATIONS
 24. PROTECT PIPES PER ACCESSIBILITY REQUIREMENTS
 25. ACCESSIBLE SHOWER FLOOR NOT TO EXCEED 1/4" IN ANY DIRECTION
 26. PROVIDE INSULATED FLOOR DRAIN IN THIS LOCATION FOR GUEST BATHS EQUIPPED WITH A ROLL IN SHOWER DRAIN WITH 1/2" DIA. DRAIN FLOOR SLOPE NOT TO EXCEED 1/4" IN ANY DIRECTION. PROVIDE TRAP PRIMER - COMPLY ALSO WITH LOCAL CODE WHERE APPLICABLE
 27. CONTROL VALVE LOCATION FOR ACCESSIBLE ROOMS WITH MOBILITY FEATURES
 28. ACCESSIBLE ADJUSTABLE SHOWER HEAD FOR ACCESSIBLE ROOMS WITH MOBILITY FEATURES - REFER TO HAMPTON STANDARDS
 29. PADDED REMOVABLE ACCESSIBLE TUB SEAT - TO BE 15'-16" DEEP AND AT 17'-19" ABOVE FINISHED FLOOR WHEN IN USE
 30. ACCESSIBLE BATH TUB
 31. REFER TO TYPICAL BATH TUB DRAWING - 2 / A5.53
 32. PROVIDE ADDITIONAL TOWEL HOOK WITH TUB OPTION

ELECTRICAL LEGEND

- PLAN
- 1. DUPLEX OUTLET
 - 2. QUADPLEX OUTLET
 - 3. GFI OUTLET
 - 4. TELEPHONE OUTLET
 - 5. TV OUTLET
 - 6. SWITCH
 - 7. REMOTE CONTROL
 - 8. STROBE (IN C.F. ROOMS ONLY)
 - 9. FIRE HORN/STROBE (IN C.F. ROOMS ONLY, OMIT FIRE HORNS WHEN THESE ARE PRESENT IN STANDARD ROOMS)
 - 10. SIDE WALL SPRINKLER HEAD
 - 11. DOORBELL LIGHT (C.F. ROOMS ONLY)
 - 12. HSA (W/RED WHERE APPLICABLE)
 - 13. JUNCTION BOX
 - 14. FAN
 - 15. LIGHT AT CEILING
 - 16. DOORBELL MOUNT AT 48" AFF TO CENTER OF BUTTON (C.F. ROOMS ONLY)

!ALERT!
VISUAL ALARMS TO BE FULLY VISIBLE FROM ALL AREAS OF ROOM

GENERAL NOTES

1. AT ADJACENT ROOMS, ELECTRICAL OUTLET LOCATIONS, INCLUDING TV AND TELEPHONE OUTLETS, SHALL BE OFFSET 6" FOR INSTALLATION. BACK TO BACK OUTLETS ARE ALLOWED.
2. ELECTRICAL CORDS SHOULD BE HIDDEN FROM VIEW. REFER TO OUTLET DETAIL.
3. LIGHT SWITCH AND GFI OUTLETS CAN BE MOUNTED IN A COMMON 64 BOX WITH COVER PLATE. COORDINATE CLEARANCES AS REQUIRED.
4. THE HEIGHT OF ALL SWITCHES, OUTLETS, ETC., TO MEET ACCESSIBILITY STANDARDS AT A MINIMUM AND/OR LOCAL CODE REQUIREMENTS, WHICHEVER IS STRICTER. SWITCHES ON LAMPS MUST BE TOGGLE TYPE.
5. ELECTRICAL OUTLETS AT DESKS ARE TO BE COORDINATED WITH HAMPTON STANDARDS. DEPENDING ON FPLAE PROVIDED, CERTAIN OUTLETS MAY NOT BE REQUIRED.
6. CEILING MOUNTED LIGHT FIXTURE AND FAN AT ALL GUEST ROOM BATHS TO BE SWITCHED SEPARATELY FROM LIGHT.
7. SLOPE FLOORS TO DRAIN, SLOPE NOT TO EXCEED 1/4" IN ANY DIRECTION.
8. ANY LIGHT FIXTURES OVER WET AREAS TO BE DAMP LOCATION RATED W/ SHATTERPROOF LENS.
9. COORDINATE BATH DOOR SWING WITH MOUNTING LOCATION OF CURVED SHOWER ROD AND STYLE OF DOOR STOP.
10. ROLL IN SHOWER COMPARTMENTS ARE REQUIRED IN A MINIMUM NUMBER OF ACCESSIBLE ROOMS PER ACCESSIBILITY REQUIREMENTS.
11. ALL WALLS IN BATH SHALL BE MOISTURE RESISTANT GYPSUM BOARD. CEILING AT BATH SHALL BE EXTERIOR RATED CEILING BOARD.
12. WALL CONSTRUCTION SHOWN FOR REFERENCE ONLY. DESIGNERS OF RECORD SHALL DETERMINE WALL CONSTRUCTION, STRUCTURES, METHOD OF STC COMPLIANCE, ETC.
13. REFER TO GUEST BATH ACCESSORY LEGEND-REFER TO HAMPTON STANDARDS FOR SPECIFIC REQUIREMENTS
14. ACCESSIBLE CLEARANCES INDICATED IN THESE DRAWINGS ARE FOR DESIGN INTENT ONLY. DESIGNER OF RECORD SHALL BE RESPONSIBLE FOR COMPLIANCE WITH ACCESSIBILITY REQUIREMENTS PER LOCAL AND NATIONAL CODES.
15. WALL MOUNTED EQUIPMENT, FIXTURES, ETC. BETWEEN 27" AND 40" A.F.F. SHALL NOT PROTRUDE FURTHER THAN 4" FROM WALL PER ACCESSIBILITY STANDARDS.

MISHRA
ARCHITECTURE PLLC

6800 S Creek Rd, Charlotte, NC 28277
Ph: (704) 625-6554 Fax: (704) 919-5822
EMAIL: ashish@mishraarch.com
WEB: www.mishraarch.com

CIVIL:
Dwight Lane Beard & Associates, Inc.
105 Commercial Parkway
West Monroe, LA 71294
Phone: (318) 388-3227
Email: fgaodberry@dlbengineering.com

STRUCTURAL:
Ritter Engineering
1043 Arroyo Vista Lane
Suite 201
Charlotte, NC 28277
Phone: (704) 542-7199
Fax: (704) 542-7195
Email: lwright@wsprinc.com

ELECTRICAL:
WGFM, Inc.
11220 Elm Lane, Suite 204
Charlotte, NC 28277
Phone: (704) 516-0385
Fax: (704) 644-1464
Email: shane@rittereng.com

MECHANICAL:
Shultz Engineering Group, P.C.
212 North McDowell St., Suite 204
Charlotte, NC 28204
Phone: (704) 334-7363
Fax: (704) 347-0093
Email: don@shultzeg.com

REVISIONS		
No.	Date	Description

Information contained on this drawing and in all digital files associated is authorized for use on the project named herein only and is the property of MISHRA ARCHITECTURE PLLC and may not be reproduced in any manner without express written or verbal permission from authorized individuals. Original drawing is 24"x36" and scales are as indicated. © 2013 MISHRA ARCHITECTURE PLLC



KEY PLAN

Southern Hospitality
Services

Hampton Inn and
Suites

5400 I-20 & Frontage Rd.
Monroe, LA 71201

Drawing Title
Enlarged Bathroom Plans,
Elevations Details

Phase
Construction Documents

Project No.	12-111	Sheet No.
Prepared by	Author	A551
Checked by	Checker	
Date	Sept. 16, 2013	

Released for
PERMIT ONLY