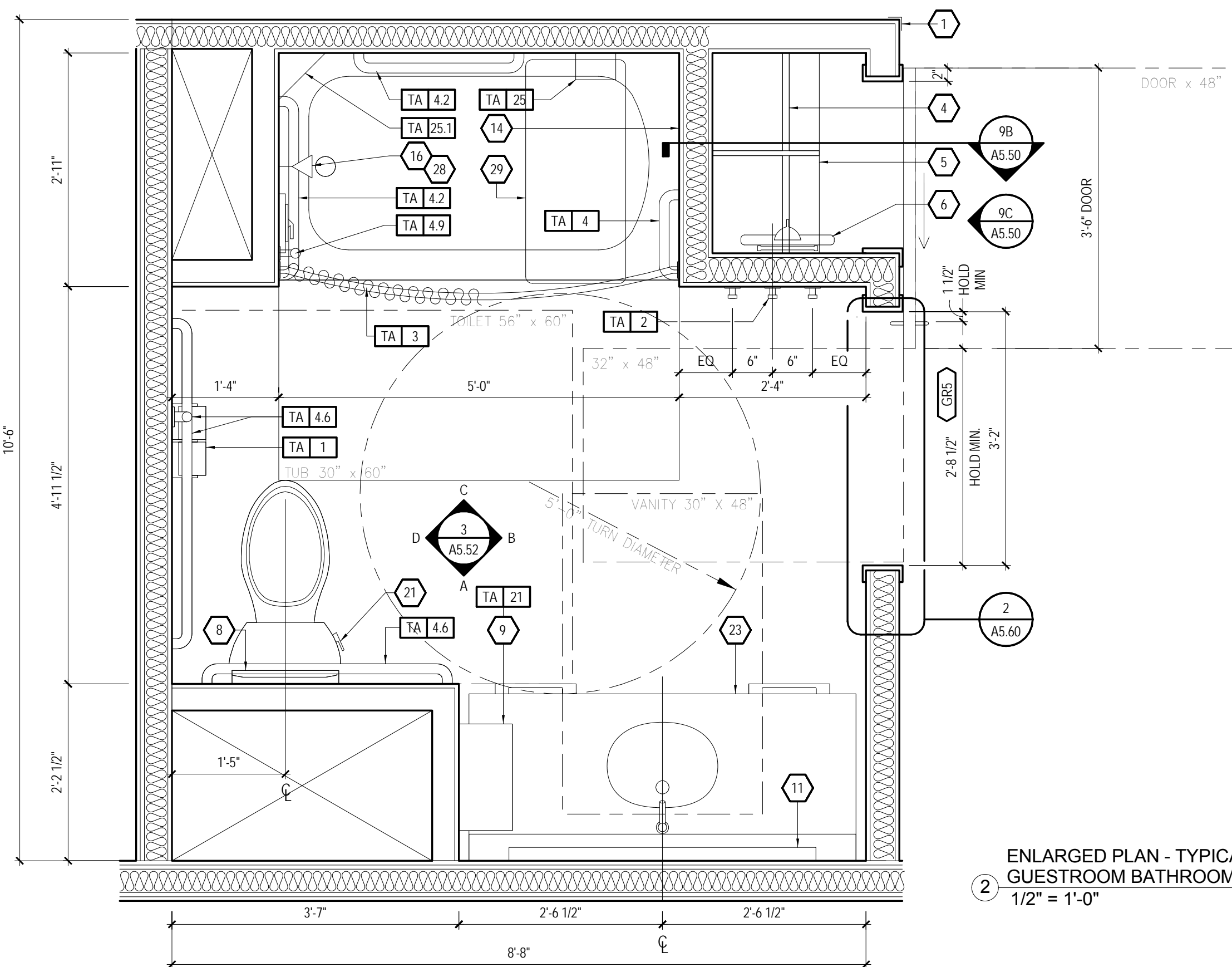


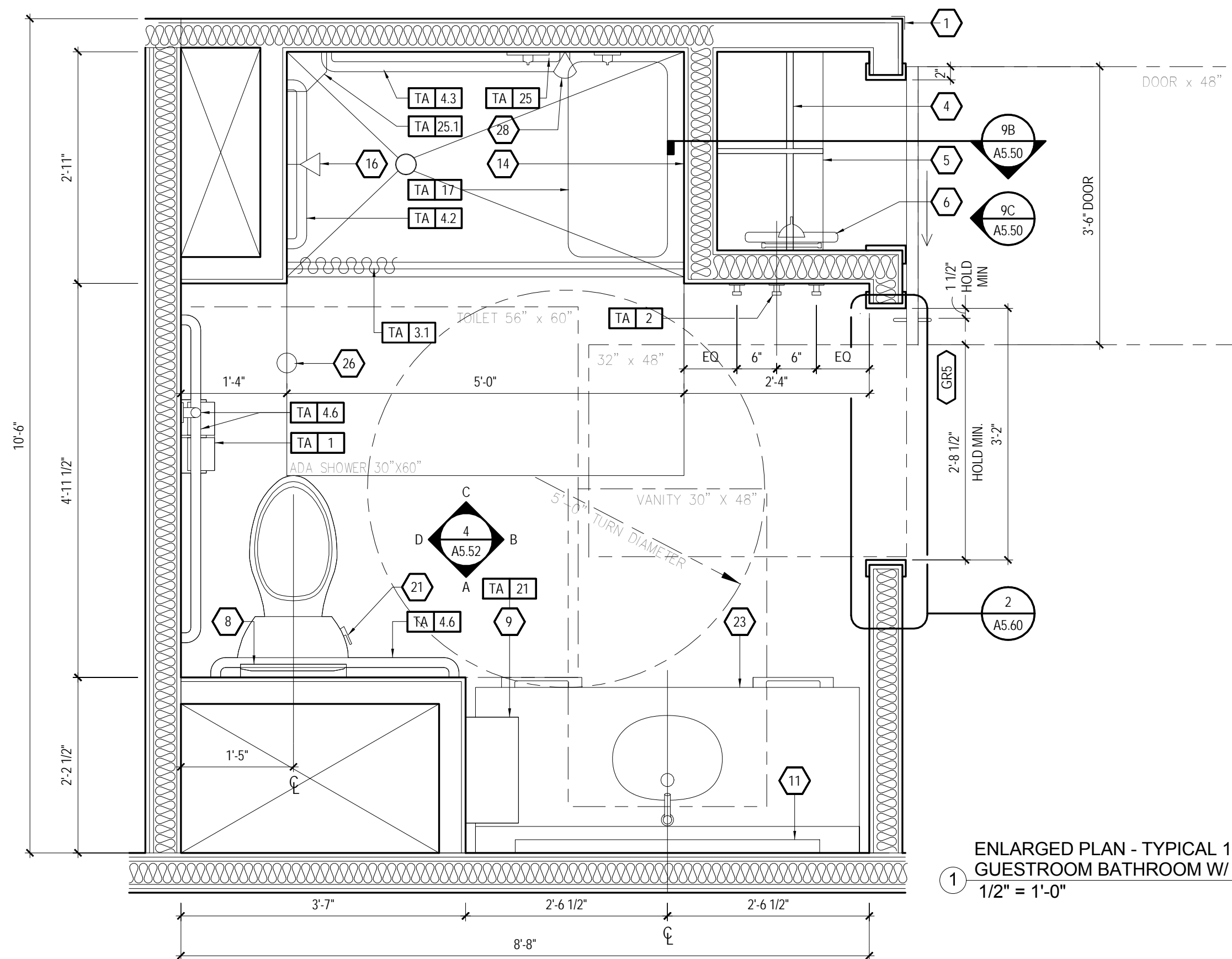
INTERIOR ELEVATIONS - TYPICAL 12'-0"
 3 GUESTROOM BATHROOM W/ SHOWER
 1/2" = 1'-0"

INTERIOR ELEVATIONS - TYPICAL 14'-0"
GUESTROOM BATHROOM W/ SHOWER
1/2" = 1'-0"



NOTE:

REFER TO SHEET A5.50 FOR RESTROOM ACCESSORY
LEGEND AND ACCESSORY HTS.



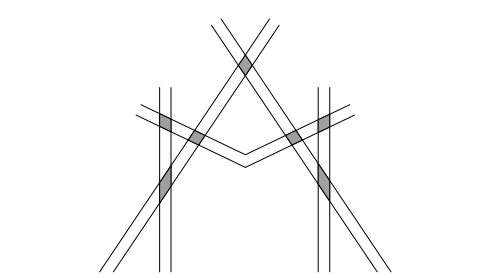
- | | |
|-----|--|
| 1 | KEYNOTES: |
| 2 | FULL HEIGHT CORNER GUARD, NO EXPOSED FASTENERS, COLOR TO COORDINATE WITH WALL. |
| 3 | CASE OPENING - PAINTED |
| 4 | MOUNTED ON 2" X 4" CLOSING ROD (BYP.) |
| 5 | CLOSING ROD HEIGHT 7'00" X 1" CHANCE 175% CIR. |
| 6 | MFG BY HANDBY AND WEIGHT 0.6-0.99 31131 |
| 7 | 2" X 4" CLOSING ROD MOUNTED AT 4' 6" TPV |
| 8 | TPV GUESTROOM AT ACCESSIBLE GUESTROOMS PROVIDE |
| 9 | ADJUSTABLE ROD LENGTH AT 4' 6" TPV |
| 10 | PROVIDE ACCESSIBLE TURNING ON ACCESSIBLE SIDE |
| 11 | OF CLOSET |
| 12 | ADJUSTABLE CLOSET WOOD SHELF W/ |
| 13 | HARDWOOD EDGE @ 48" AF, IN ACCESSIBLE |
| 14 | GUESTROOMS WITH MOBILITY FEATURES, PROVIDE |
| 15 | ADJUSTABLE SHELF @ 48" AF |
| 16 | ACCESSIBLE HANG ROD ON MOST ACCESSIBLE SIDE |
| 17 | OF CLOSET TO CLOSET DETAIL |
| 18 | PROVIDE BATH |
| 19 | NOT USED |
| 20 | PROVIDE BATH |
| 21 | FLATING BAND |
| 22 | FLATING WOOD FLEXIBLE (7A-21): REFER TO DETAIL |
| 23 | 17.02.02 |
| 24 | WALL MOUNTED LIGHT SWITCH |
| 25 | FRAMED MIRROR |
| 26 | TYPICAL GUEST VANITY - REFER TO GUEST ROOM |
| 27 | DETAIL FOR GUEST ROOM FURNITURE SPECIFICATIONS |
| 28 | SHOWER FLOOR FINISH - REFER TO HAMPTON |
| 29 | STANDARD SHOWER PAN - REFER TO HAMPTON |
| 30 | APPROVED SHOWER CURTAIN - REFER TO HAMPTON |
| 31 | STANDARD SHOWER CURTAIN - REFER TO HAMPTON |
| 32 | CONTROL VALVE |
| 33 | SHOWER HANG, ROUGH IN HEIGHT BETWEEN 6'-0" AND |
| 34 | 7'-0" ABOVE FINISH |
| 35 | SLIDING GLASS SHOWER ROD - CUSTOM HEIGHT |
| 36 | SHOWER BAR/ DRAINER PULP TO BE USED AS |
| 37 | SHOWER BAR/ DRAINER PULP TO BE USED AS |
| 38 | WALL BASE |
| 39 | SHOWER BAR/ DRAINER PULP TO BE USED AS |
| 40 | SHOWER BAR/ DRAINER PULP TO BE USED AS |
| 41 | FLEX/FLUVER MUST BE POSITIONED ON OPEN SIDE OF |
| 42 | WATER CLOSURE AS SHOWN |
| 43 | SHOWER GLASS WITH ACCESSIBILITY RBS |
| 44 | MOUNT BOTTOM OF GLASS AT 40" MAX. AFF |
| 45 | TYPICAL GUEST VANITY - REFER TO GUEST ROOM |
| 46 | DETAIL FOR GUEST ROOM FURNITURE SPECIFICATIONS |
| 47 | SHOWER FLOOR FINISH - REFER TO HAMPTON |
| 48 | APPROVED SHOWER FLOOR NO TO EXCEED 1/4" IN |
| 49 | ANY DIRECTION |
| 50 | EXPOSED GLAZED FLOOR DRAIN IN A ROLL IN SHOWER |
| 51 | FOR GUEST BATHS EQUIPPED WITH A ROLL IN SHOWER |
| 52 | DRAIN WITH 1/2" DIA. DISH FLOOR SLOPE NOT TO |
| 53 | EXCEED 1/4" IN ANY DIRECTION. PROVIDE TRAP TIGHT |
| 54 | COMPPLY AS LOCAL CODE. CODE WHERE APPLICABLE |
| 55 | CONTROL VALVE LOCATION FOR ACCESSIBLE ROOMS |
| 56 | SHOWER FLOOR FINISH - REFER TO HAMPTON |
| 57 | APPROVED SHOWER FLOOR FINISH - REFER TO |
| 58 | APPROVED SHOWER FLOOR FINISH - REFER TO |
| 59 | APPROVED SHOWER FLOOR FINISH - REFER TO |
| 60 | APPROVED SHOWER FLOOR FINISH - REFER TO |
| 61 | APPROVED SHOWER FLOOR FINISH - REFER TO |
| 62 | APPROVED SHOWER FLOOR FINISH - REFER TO |
| 63 | APPROVED SHOWER FLOOR FINISH - REFER TO |
| 64 | APPROVED SHOWER FLOOR FINISH - REFER TO |
| 65 | APPROVED SHOWER FLOOR FINISH - REFER TO |
| 66 | APPROVED SHOWER FLOOR FINISH - REFER TO |
| 67 | APPROVED SHOWER FLOOR FINISH - REFER TO |
| 68 | APPROVED SHOWER FLOOR FINISH - REFER TO |
| 69 | APPROVED SHOWER FLOOR FINISH - REFER TO |
| 70 | APPROVED SHOWER FLOOR FINISH - REFER TO |
| 71 | APPROVED SHOWER FLOOR FINISH - REFER TO |
| 72 | APPROVED SHOWER FLOOR FINISH - REFER TO |
| 73 | APPROVED SHOWER FLOOR FINISH - REFER TO |
| 74 | APPROVED SHOWER FLOOR FINISH - REFER TO |
| 75 | APPROVED SHOWER FLOOR FINISH - REFER TO |
| 76 | APPROVED SHOWER FLOOR FINISH - REFER TO |
| 77 | APPROVED SHOWER FLOOR FINISH - REFER TO |
| 78 | APPROVED SHOWER FLOOR FINISH - REFER TO |
| 79 | APPROVED SHOWER FLOOR FINISH - REFER TO |
| 80 | APPROVED SHOWER FLOOR FINISH - REFER TO |
| 81 | APPROVED SHOWER FLOOR FINISH - REFER TO |
| 82 | APPROVED SHOWER FLOOR FINISH - REFER TO |
| 83 | APPROVED SHOWER FLOOR FINISH - REFER TO |
| 84 | APPROVED SHOWER FLOOR FINISH - REFER TO |
| 85 | APPROVED SHOWER FLOOR FINISH - REFER TO |
| 86 | APPROVED SHOWER FLOOR FINISH - REFER TO |
| 87 | APPROVED SHOWER FLOOR FINISH - REFER TO |
| 88 | APPROVED SHOWER FLOOR FINISH - REFER TO |
| 89 | APPROVED SHOWER FLOOR FINISH - REFER TO |
| 90 | APPROVED SHOWER FLOOR FINISH - REFER TO |
| 91 | APPROVED SHOWER FLOOR FINISH - REFER TO |
| 92 | APPROVED SHOWER FLOOR FINISH - REFER TO |
| 93 | APPROVED SHOWER FLOOR FINISH - REFER TO |
| 94 | APPROVED SHOWER FLOOR FINISH - REFER TO |
| 95 | APPROVED SHOWER FLOOR FINISH - REFER TO |
| 96 | APPROVED SHOWER FLOOR FINISH - REFER TO |
| 97 | APPROVED SHOWER FLOOR FINISH - REFER TO |
| 98 | APPROVED SHOWER FLOOR FINISH - REFER TO |
| 99 | APPROVED SHOWER FLOOR FINISH - REFER TO |
| 100 | APPROVED SHOWER FLOOR FINISH - REFER TO |

ELECTRICAL LEGEND	
	PANEL
	ELEV.
	DUPLEX OUTLET
	QUADPLEX OUTLET
	GFI OUTLET
	TELEPHONE OUTLET
	TV OUTLET
	SWITCH
	REMOTE CONTROL
	SMOKE DETECTOR
	STORAGE (IN C.F. ROOMS ONLY)
	FIRE HOSE CONNECTION (IN C.F. ROOMS ONLY) NOT FIRE FIGHTING WHEN THESE ARE HORN , STANDARD ROOMS
	WALL SWIVEL SPEAKER HEAD
	DOORBELL LIGHT (C.F. ROOMS ONLY)
	HSA (WIRED WHERE APPLICABLE)
	JUNCTION
	EXHAUST FAN
	LIGHT AT CEILING
	DOORBELL MOUNT AT 40° OFF TO CENTER OF BUTTONG (C.F. ROOMS ONLY)

!ALERT!

VISUAL ALARMS TO BE FULLY VISIBLE FROM ALL AREAS OF ROOM

- # GENERAL NOTES
1. AT ADJACENT ROADS, ELECTRICAL OUTLETS INCLUDING TWO TELEPHONE OUTLETS SHALL BE OFFSET 6" FOR INSTALLATION. BACK TO BACK OUTLETS SHALL BE OFFSET 12".
 2. ELECTRICAL OUTLETS SHALL BE VIEWED FROM VIEW REFER TO OUTLET TO DETAIL.
 3. ELECTRICAL OUTLETS CAN BE MOUNTED IN A COMMON 64 WALL WITH COVER PLATE. COORDINATE CLEARANCES AS REQUIRED.
 4. ELECTRICAL OUTLETS SHALL BE MOUNTED TO MEET ACCESSIBILITY STANDARDS AT A MINIMUM AND/OR LOCAL CODE REQUIREMENTS, WHICHEVER IS MORE STRINGENT. ELECTRICAL OUTLETS TOGGLE TYPE.
 5. ELECTRICAL OUTLETS AT DECK ARE TO BE MOUNTED WITH HOURGLASS TYPE OUTLETS. DEPENDING ON FIRE PROVIDED, CERTAIN OUTLETS MAY NOT BE REQUIRED.
 6. ELECTRICAL OUTLETS FOR LIGHT FIXTURES AND FAN AT GUEST ROOM FLOORS TO BE SWITCHED SEPARATELY FROM SLOPE BATHS TO DRAIN. SLOPE NOT TO EXCEED 1/4 IN ANY DIRECTION.
 7. ALL ELECTRICAL WIRING OVER WEIR ARE TO BE DAMP LOCATION RATED IN WATERPROOF LENS. COORDINATE WITH DRAIN SWING WITH MOUNTING.
 8. ELECTRICAL CUBES SHOW SHOWER AND STOVE OF STOVE.
 9. ROLL IN SHOWER COMPARTMENTS ARE REQUIRED IN A COMMON 64 WALL WITH COVER PLATE PER ACCESSIBILITY REQUIREMENTS.
 10. ALL WALLS IN BATH SHALL BE MOISTURE RESISTANT TYPE. CEILING SHALL BE GYP. SHALL SHALL BE EXTERIOR RATED CEILING BOARD.
 11. ALL CONSTRUCTION SHOWN FOR REFERENCE ONLY. METHOD OF RECORDING TO DETERMINE WALL CONSTRUCTION, STRUCTURES, METHOD OF ETC.
 12. REFER TO QUEST BATH ACCESSORY LEGEND-REFER TO HAMPONS STANDARDS FOR SPECIFIC REQUIREMENTS.
 13. ACCESSIBLE CLEARANCES INDICATED IN THESE DRAWINGS ARE FOR DESIGN INTENT ONLY.
 14. WALLS OF RECORD SHALL BE RESPONSIBLE FOR COMPLIANCE WITH ACCESSIBILITY REQUIREMENTS FOR LOCAL AND NATIONAL CODES.
 15. WALLS OF EQUIPMENT FOOTPRINTS, ETC. BETWEEN 27" AND 80" AFF. SHALL NOT PROVIDE CLEARANCE.
 16. FURTHER THAN 4" FROM WALL PER ACCESSIBILITY STANDARDS.



6800 S Creek Rd, Charlotte, NC 28277
Ph:(704) 625-6554 Fax:(704) 919-5822
EMAIL:ashish@mishraarch.com
WEB: www.mishraarch.com

CIVIL:
David Lane Beaird & Associates, Inc.
105 Commercial Parkway
West Monroe, LA 71294
Phone: (318) 388-3227
Email:fgadberry@dlbengineering.com

STRUCTURAL:
WGPM, Inc.
11220 Elm Lane, Suite 201
Charlotte, NC 28277
Phone: (704) 542-7199
Fax: (704) 542-7195
Email: lwright@wgpminc.com

ELECTRICAL:
Ritter Engineering
1043 Arroyo Vista Lane
Matthew, NC 28014
Phone: (704) 516-0385
Fax: (704) 644-1464
Email: shane@rittereng.com

MECHANICAL:
Shultz Engineering Group, P.C.
212 North McDowell St., Suite 204
Charlotte, NC 28204
Phone: (704) 334-7363
Fax: (704) 347-0093
Email: don@shultzeg.com

[illegible]

Information contained on this drawing and in all digital files associated is authorized for use on the project named herein only and is the property of MISHRA ARCHITECTURE PLLC and may not be reproduced in any manner without express written or verbal permission from authorized individuals. Original drawing is 24"x36" and scales are as indicated. ©2013 MISHRA ARCHITECTURE PLLC



KEY PLAN

Southern Hospitality
Services

Hampton Inn and Suites

5400 I-20 & Frontage Rd.
Monroe, LA 71201

Drawing Title

Enlarged Bathroom Plans
and Elevations

Phase
Construction Documents

Project No.	12-111	Sheet No. A552
Prepared by	Author	
Checked by	Checker	
Date	Sept. 16, 2013	

Released for
PERMIT ONLY

Hampton Inn and Suites