

MISHRA
ARCHITECTURE PLLC

6800 S. Creek Rd., Charlotte, NC 28277
Ph: (704) 625-6554 Fax: (704) 919-5822
EMAIL: sashish@mishraarch.com
WEB: www.mishraarch.com

OWNER: Gary Reisler & Associates, Inc.
105 Commercial Parkway
West Monroe, LA 71294
Phone: (318) 386-3227
Email: garyreisler@gabongengineering.com

STRUCTURAL:
MCDERMOTT, Inc., Suite 201
11201 North McDowell St.,
Charlotte, NC 28277
Phone: (704) 542-7199
Fax: (704) 542-7195
Email: mcd@mcdinc.com

ELECTRICAL:
R. Srinivas Rengar, P.E.
11201 North McDowell St.,
Matthew, NC 28014
Phone: (704) 516-0385
Email: srinase@rlengr.com
Project Number: 130115

MECHANICAL:
Mishra Engineering Group, P.C.
212 North McDowell St., Suite 204
Charlotte, NC 28204
Phone: (704) 334-7863
Fax: (704) 334-4069
Email: dmr@msheng.com

REVISIONS		
No.	Date	Description
1	11-5-13	Review Comments
2	11-15-13	Franchise Comments
3	04-10-14	Hilton Update

Information contained on this drawing and in all digital files associated is authorized for use on the project named herein only and is the property of MISHRA ARCHITECTURE PLLC and may not be reproduced, stored in a retrieval system, written or verbal permission from authorized individuals. Original drawing is 24"x36" and scales are as indicated. 2011 MISHRA ARCHITECTURE PLLC



KEY PLAN

Southern Hospitality
Services

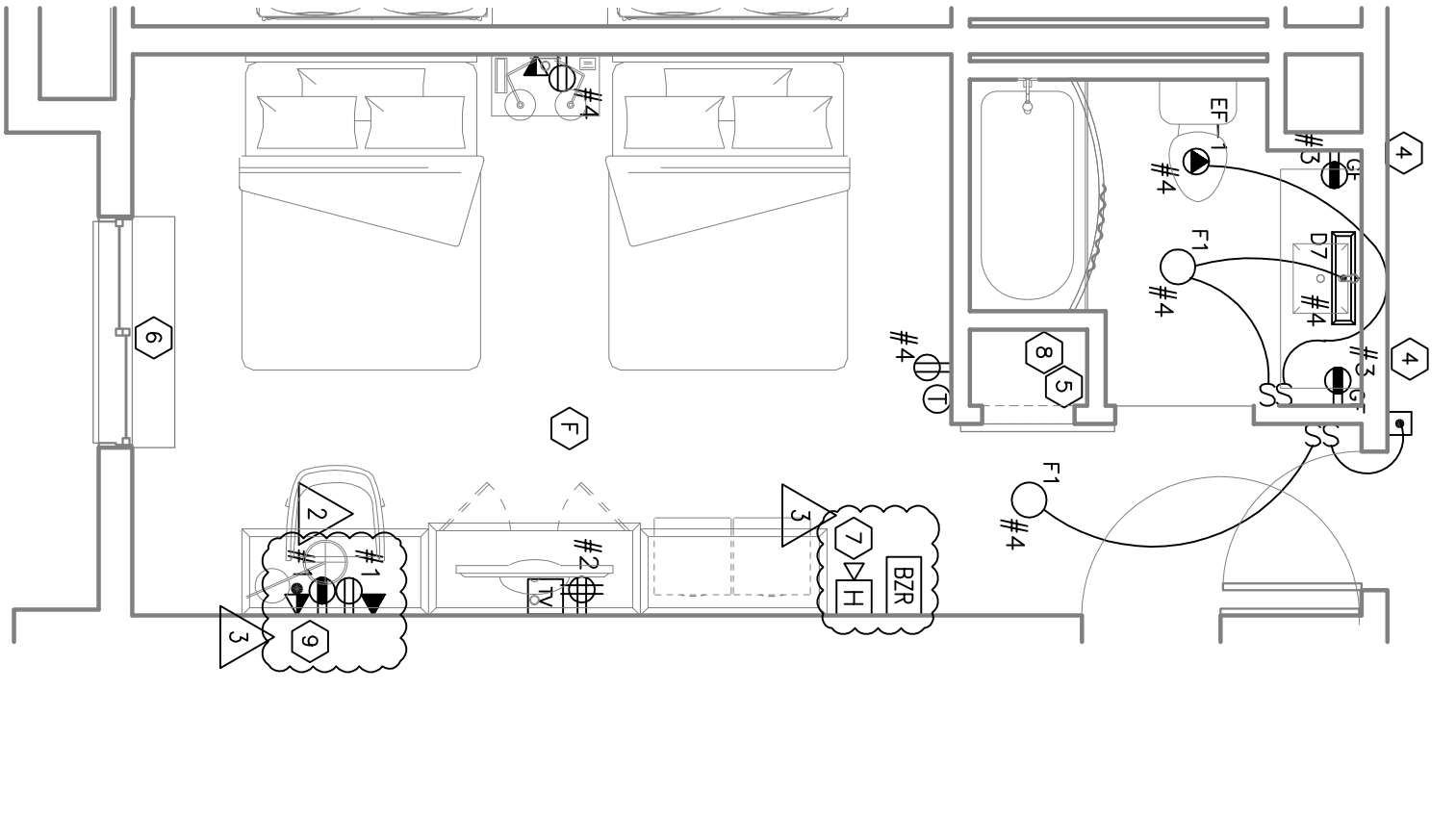
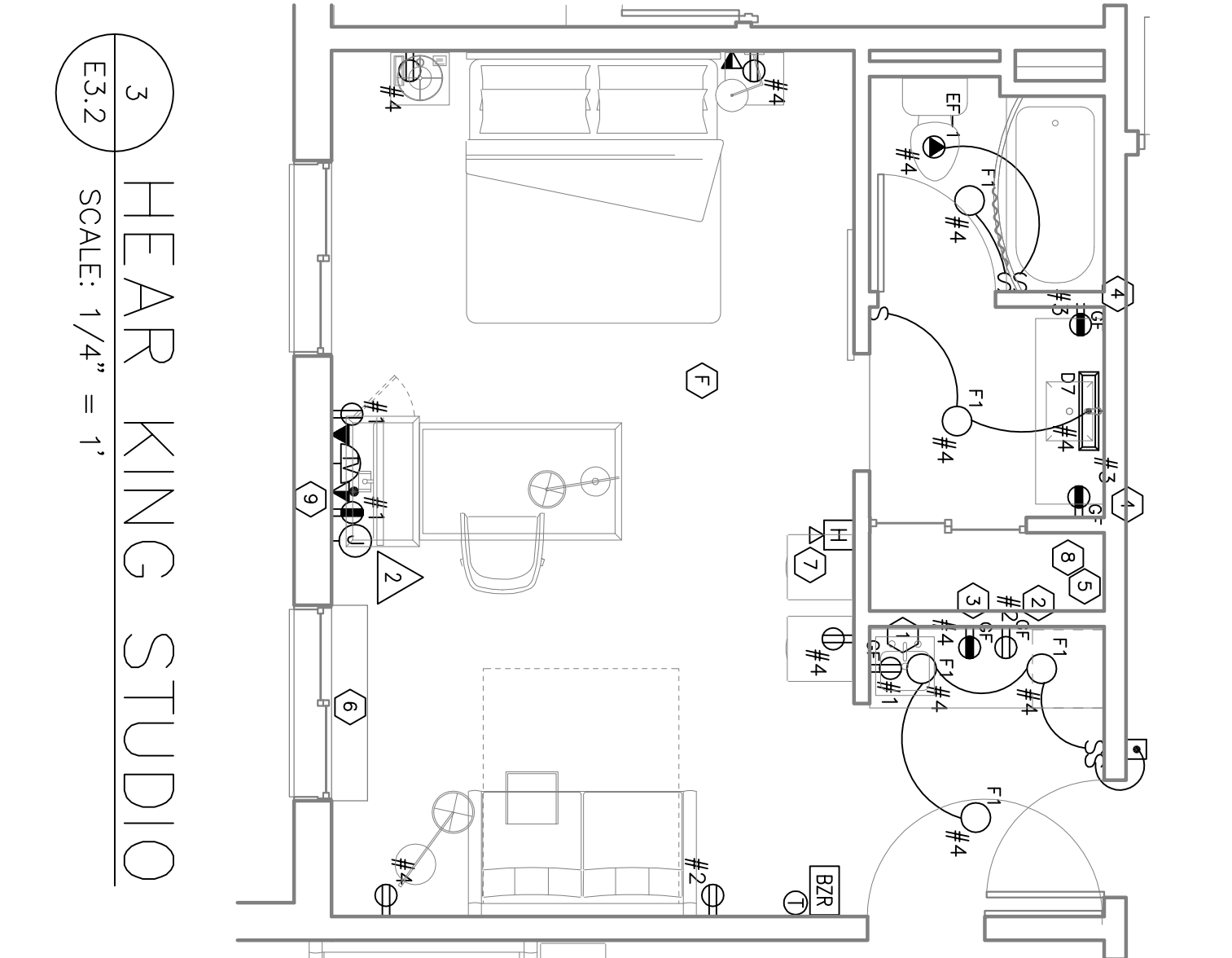
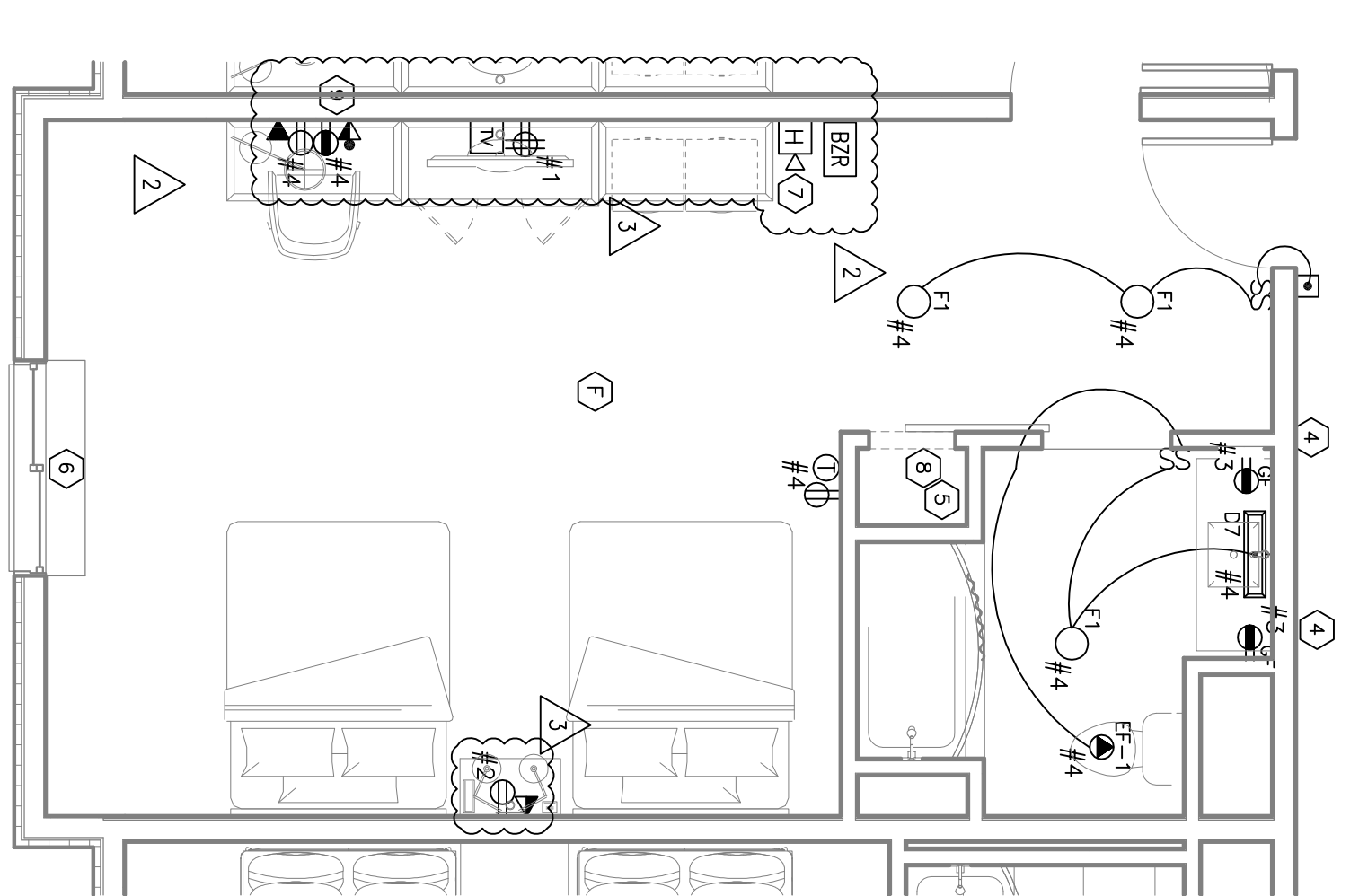
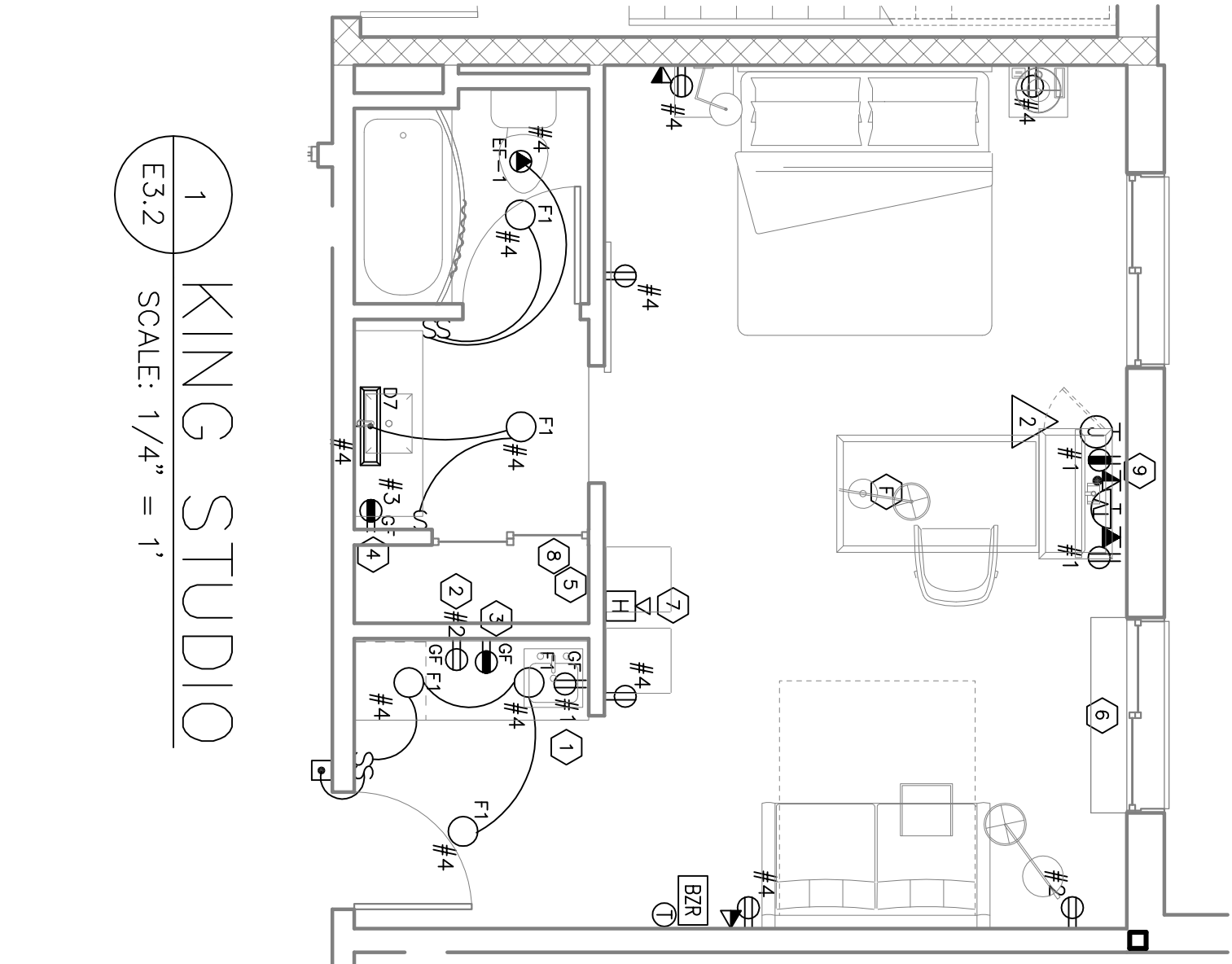
Hampton Inn and
Suites

5400 I-20 & Frontage Rd.
Monroe, LA 71201

Drawing Title
Typical Guest Room
Electrical Plans - Part 2

Phase Construction Documents		Sheet No. E3.2
Project No.	12-111	
Prepared by	RSR	
Checked by	RSR	
Date	Sept. 16, 2013	

Released for
PERMIT ONLY



GENERAL GUEST ROOM ELECTRICAL NOTES:

1. OUTLETS ARE NOT BE LOCATED BACK TO BACK IN COMMON WALLS BETWEEN ROOMS. VERIFY ALL LOCATIONS BEFORE ROUGH-IN.
2. ALL OUTLETS TO BE MOUNTED 15" AFF TO THE CENTER OF THE DEVICE UNLESS OTHERWISE NOTED.
3. LIGHT SWITCHES MUST BE MOUNTED NO MORE THAN 48" AFF.
4. COORDINATE WITH FF&E VENDOR FOR RESPONSIBILITY OF FIXTURE PROVISIONS FOR EACH FIXTURE TYPE. FIXTURE TO BE SUPPLIED BY CONTRACTOR MUST BE APPROVED BY THE FRANCHISE BEFORE PURCHASE.
5. THE LOCATION AND INSTALLATION OF ALL FIXTURES SHALL BE IN COMPLIANCE WITH THE FRANCHISE STANDARDS AND GUIDELINES.
6. COORDINATE THE EXACT LOCATIONS AND MOUNTING HEIGHTS FOR ALL RECEPTACLES AND DEVICES WITH THE MILLWORK DETAILS AND THE FINAL INTERIOR DESIGN PLANS BEFORE ROUGH-IN. REFER TO ARCHITECTURAL PLANS FOR THIS INFORMATION AND ADDITIONAL REQUIREMENTS.
7. GENTEX #9210 SERIES CEILING MOUNTED PHOTOELECTRIC SMOKE DETECTOR WITH AUDIBLE ALARM AND BATTERY BACKUP TO BE INSTALLED IN EACH DWELLING UNIT. TYPICAL FOR ALL NON-HANDICAPPED ROOMS. THESE SMOKE DETECTORS SHALL BE CONNECT TO 120V SUPPLY. DWELLING ROOM DETECTORS TO ALARM LOCALLY IN GUESTROOM, AND NOT PUT SYSTEM IN GENERAL ALARM. AUXILIARY CONTACTS OF DETECTOR SHALL BE USED TO ANNUNCIATE PROXIMITY ALARM ON REMOTE ANNUNCIATOR LOCATED AT FRONT DESK.
8. IN ALL HANDICAPPED AND ACCESSIBLE ROOMS INSTAL A WALL MOUNTED PHOTOELECTRIC SMOKE DETECTOR 80" AFF WITH AN AUDIBLE ALARM, BATTERY BACKUP, AND AN ADA APPROVED STROBE. ALL OF THESE SMOKE DETECTORS SHALL BE CONNECTED TO 120V POWER SUPPLY. THESE ROOMS SHALL HAVE A MINIMUM OF TWO (2) OF THESE DEVICES; ONE IN THE BEDROOM, AND ONE STROBE ONLY IN THE BATHROOM.
9. MOUNT THE LIGHT SWITCH AND GFI RECEPTACLE IN GUEST ROOM TOILETS UNDER A SINGLE COVER PLATE (WHERE POSSIBLE).
10. WHERE TWO OUTLETS ARE SHOWN ON TOP OF ONE ANOTHER IN GUEST ROOMS, INSTALL ONE AT 15" AFF AND THE OTHER OUTLET AT 48" AFF. COORDINATE LOCATIONS AND REQUIREMENTS WITH EQUIPMENT TO BE SERVED.
11. ALL DOORS TO HAVE ELECTRONIC LOCKS. CONNECT POWER FOR THESE LOCKS TO CIRCUIT #4 (UNSWITCHED). VERIFY REQUIREMENTS WITH THE OWNER/ARCHITECT.
12. CONTRACTOR SHALL MAKE ALL FINAL CONNECTIONS TO ALL MECHANICAL EQUIPMENT INCLUDING WINDOW/WALL AC UNITS, EXHAUST FANS IN BATHROOMS, ETC. EXHAUST FANS SHALL BE CONTROLLED BY A SEPARATE MOTOR RATED TOGGLE SWITCH LOCATED NEXT TO LIGHT SWITCH.
13. ROOM LAYOUTS ARE TYPICAL AND SHOW THE NUMBER OF HOME RUN CIRCUIT REQUIRED FOR EACH ROOM GENERALLY DESIGNATED AS #1 THROUGH #4. SEE FLOOR PLANS FOR THE DEFINITION OF THESE CIRCUITS FOR EACH ROOM.
14. ALL BREAKERS FEEDING CIRCUITS IN GUEST ROOMS OR DWELLING UNITS SHALL BE ARCH FAULT INTERRUPT TYPE. CONTRACTOR FOR SUPPLYING ALL ADDITIONAL EQUIPMENT, MATERIALS AND LABOR TO ACCOMPLISH THIS.
15. THE CONTRACTOR SHALL COORDINATE THESE DRAWINGS WITH THE FRANCHISE DESIGN GUIDELINES & STANDARDS, AND PROTOTYPICAL DOCUMENTS. FRANCHISE DOCUMENTS SHALL TAKE PRECEDENT OVER THE ENGINEERED DRAWINGS DEVICE REQUIREMENTS AND LOCATIONS.
16. THE FRANCHISE GUIDELINES, STANDARDS, SPECIFICATIONS, AND PROTOTYPICAL DOCUMENTS ARE AVAILABLE ONLINE AT THE FRANCHISE WEBSITE, OR FROM THE ARCHITECT FOR THE CONTRACTORS USE.
17. ALL LIGHT SWITCHES SHALL BE PILOT LIGHT TYPE.
18. PROVIDE TWO NON-SWITCHED ELECTRICAL SOCKETS ABOVE THE BEDSIDE SURFACE IN THE BASE OF LIGHT FIXTURES OR RECESSED IN THE WALL. SOCKETS ARE NOT ALLOWED IN WALL-HUNG FIXTURES.

PLAN KEY NOTES:

- ① RECEPTACLE FOR BELOW COUNTER MINI REFRIGERATOR. VERIFY LOCATION, MOUNTING HEIGHT, AND REQUIREMENTS BEFORE ROUGH-IN.
- ② RECEPTACLE FOR MICROWAVE OVEN. VERIFY LOCATION, MOUNTING HEIGHT, AND REQUIREMENTS BEFORE ROUGH-IN.
- ③ RECEPTACLE FOR COFFEE MAKER (AND CONVENIENCE OUTLET). VERIFY LOCATION AND MOUNTING HEIGHT BEFORE ROUGH-IN.
- ④ GFI TYPE RECEPTACLE FOR RESTROOM USE. VERIFY LOCATION AND MOUNTING HEIGHT BEFORE ROUGH-IN.
- ⑤ ACCESSIBLE BOX WITH REMOVABLE COVER. MOUNT HIGH IN CLOSET, ABOVE SHELF. PAINT COVER TO MATCH WALL FINISH. INSCRIBE PANEL WITH CIRCUIT DESIGNATIONS UTILIZED IN BOX ON INSIDE COVER. EXTEND GUEST ROOM CIRCUITRY AS INDICATED AND REFER TO FLOOR PLANS AND PANELS SCHEDULES FOR CIRCUIT DESIGNATIONS FOR EACH ROOM.
- ⑥ PROVIDE DISCONNECT SWITCH ON THE OUTSIDE FACE OF THE SUB-BASE OR THE AC UNIT. REFER TO FLOOR PLANS AND PANEL SCHEDULES FOR CIRCUIT DESIGNATIONS FOR EACH ROOM. COORDINATE ALL WORK WITH DIVISION 15 CONTRACTOR. ALL ELECTRICAL WORK TO BE CONCEALED FROM VIEW.
- ⑦ FIRE ALARM SYSTEM MINI-HORN AND DETECTOR. CONNECT DEVICES TO NOTIFICATION CIRCUITRY. SEE FIRE ALARM RISER FOR MORE DETAILS.
- ⑧ HOMERUN FOR GENERAL CIRCUITS #1, #2, #3, AND #4. ALL HOMERUNS TO USE #10 WIRE IN A 1" CONDUIT MINIMUM. CIRCUIT ASSIGNMENTS FOR #1, #2, #3 AND #4 GENERAL CIRCUITS ARE DEFINED ON THE POWER AND COMMUNICATIONS FLOOR PLANS. REFER TO SPECIFIC ROOM LOCATION OF THESE FLOOR PLANS FOR CIRCUIT DEFINITION FOR EACH ROOM.
- ⑨ OUTLETS MOUNTED ABOVE DESK TO BE INSTALLED HORIZONTALLY.