

MISHRA
ARCHITECTURE PLLC

6800 S. Creek Rd., Charlotte, NC 28277
Ph: (704) 625-6554 Fax: (704) 919-5822
EMAIL: sashh@mishraarch.com
WEB: www.mishraarch.com

Civil: Dr. Sushant Arora, Board of Associates, Inc.
105 Commercial Parkway
West Monroe, LA 71204
Phone: (318) 386-3227
Email: gauberry@gauberryengineering.com

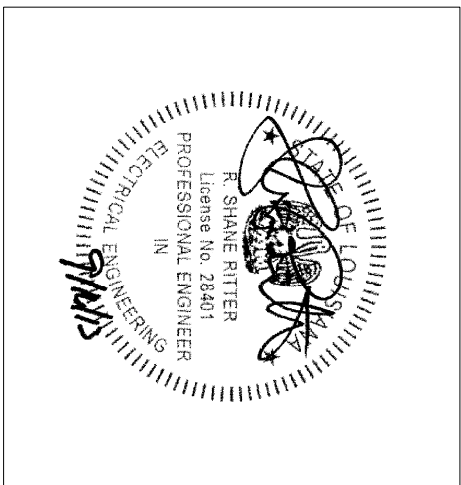
STRUCTURAL:
WSPRI, Inc.
11225 E. Main Street, Suite 201
Charlotte, NC 28277
Phone: (704) 542-7199
Fax: (704) 542-7195
Email: jmrigby@wspri.com

ELECTRICAL:
R. Stane Riter, P.E.
11022 W. Highway 101, Suite 200
Matthew, NC 28074
Phone: (704) 516-0385
Email: stane@riterey.com
Project Number: 130115

MECHANICAL:
Southern Hospitality Group, P.C.
212 North McDowell St., Suite 204
Charlotte, NC 28204
Phone: (704) 334-7963
Fax: (704) 334-4085
Email: don@shltdg.com

REVISIONS	
No.	Date Description

Information contained on this drawing and in all digital files associated is authorized for use on the project named herein only and is the property of MISHRA ARCHITECTURE PLLC and may not be reproduced, stored in a retrieval system, written or verbal permission from authorized individuals. Original drawing is 24x36" and scales are as indicated. 2011 MISHRA ARCHITECTURE PLLC



KEY PLAN

Southern Hospitality
Services

Hampton Inn and
Suites

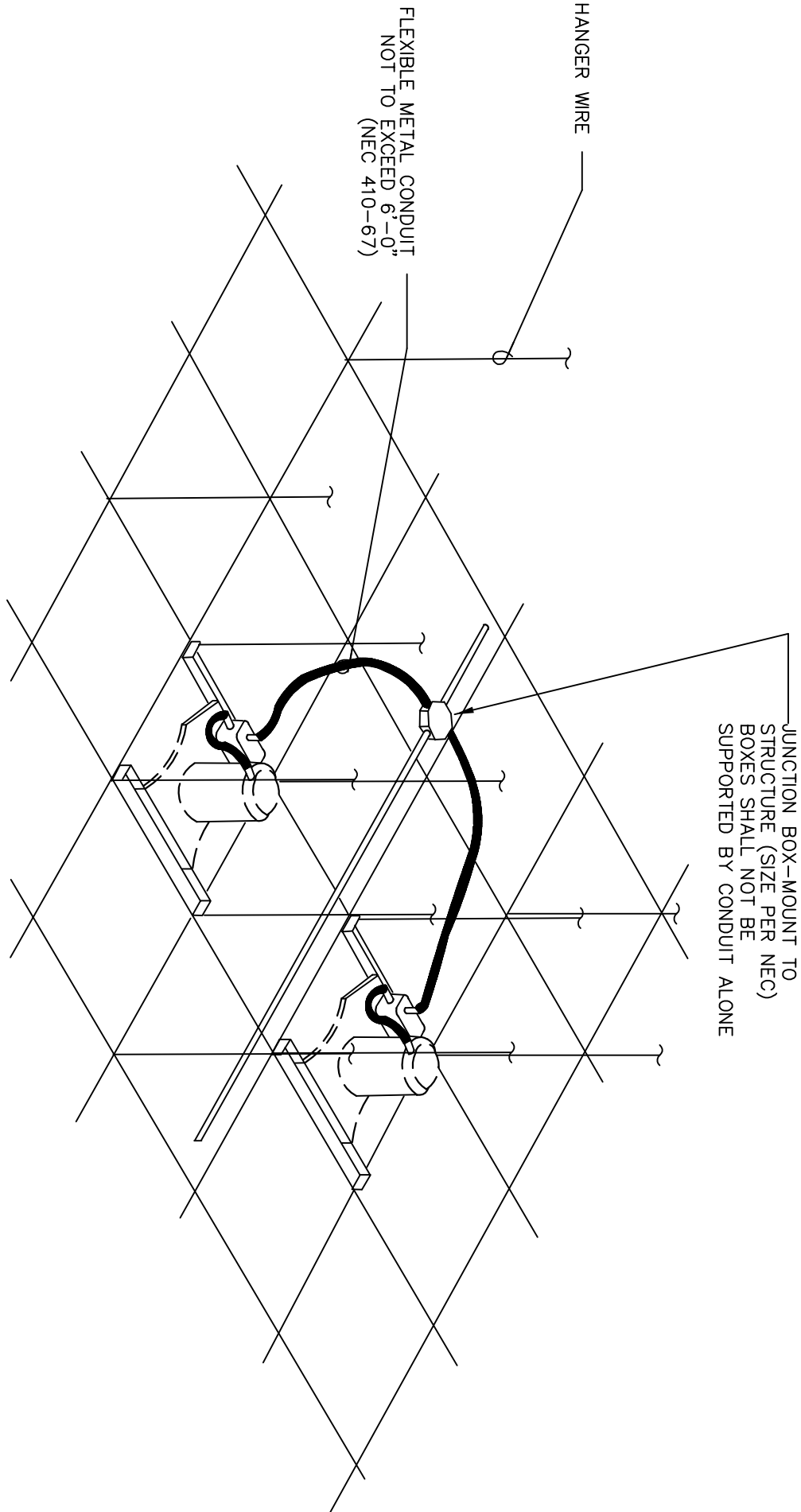
5400 I-20 & Frontage Rd.
Monroe, LA 71201

Drawing Title
Electrical Lighting Details

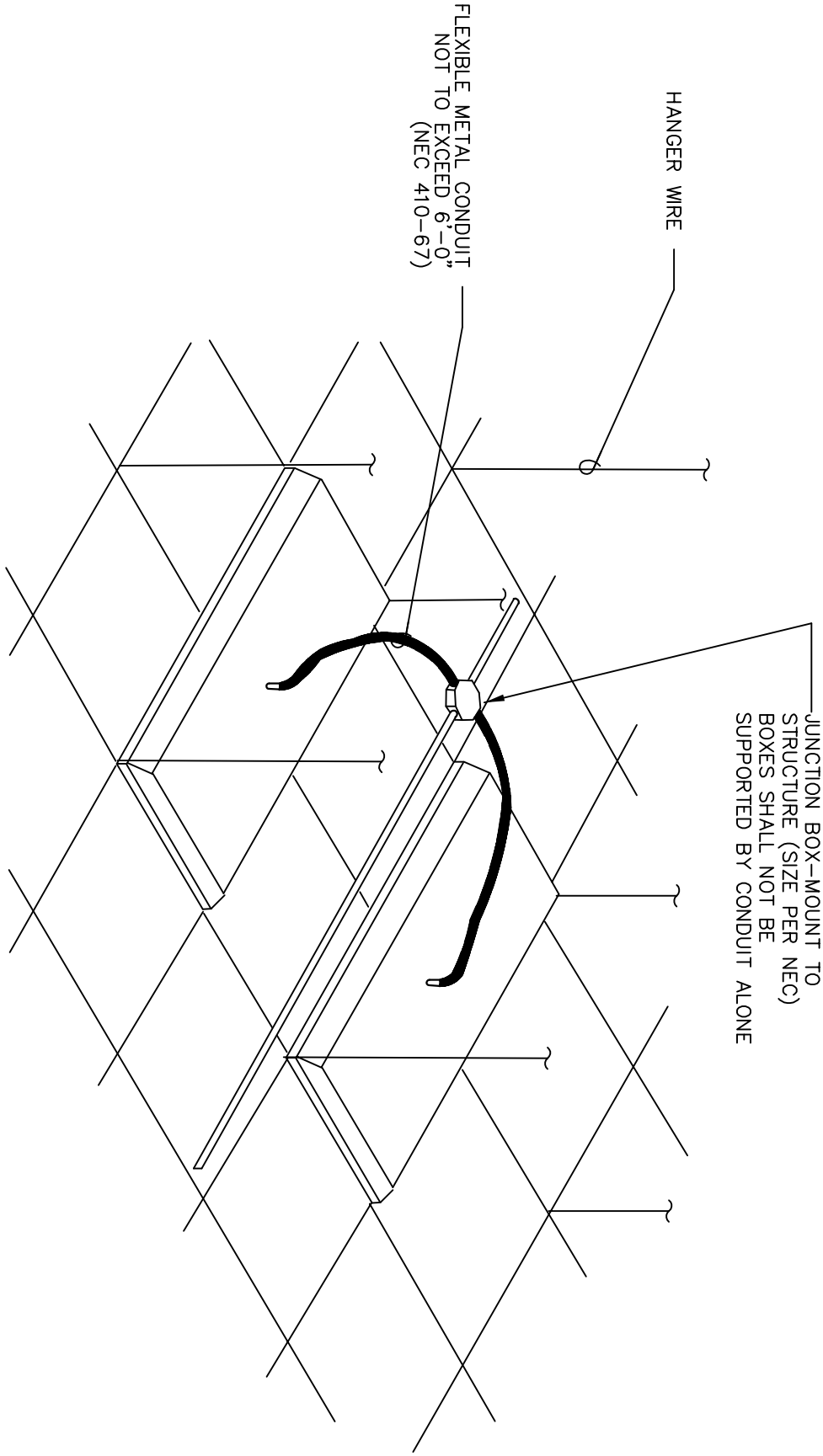
Phase
Construction Documents

Project No.	12-111	Sheet No.
Prepared by	RSR	
Checked by	RSR	E6.2
Date	Sept. 16, 2013	

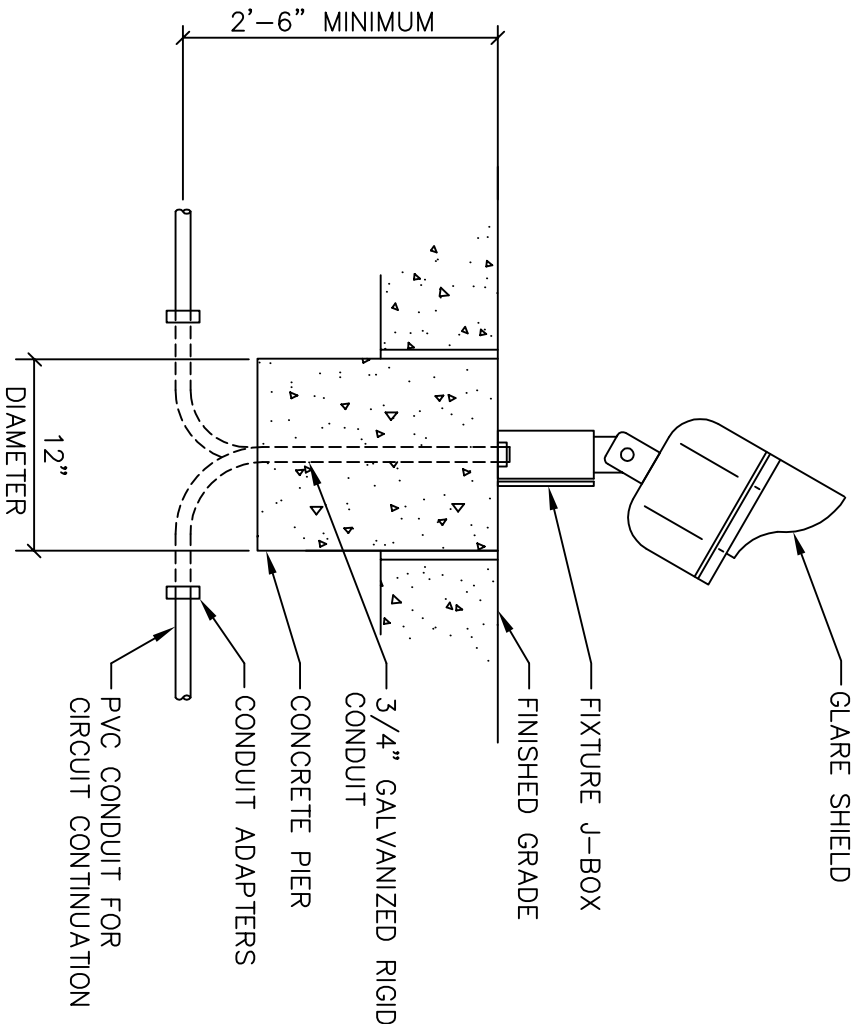
Released for
PERMIT ONLY



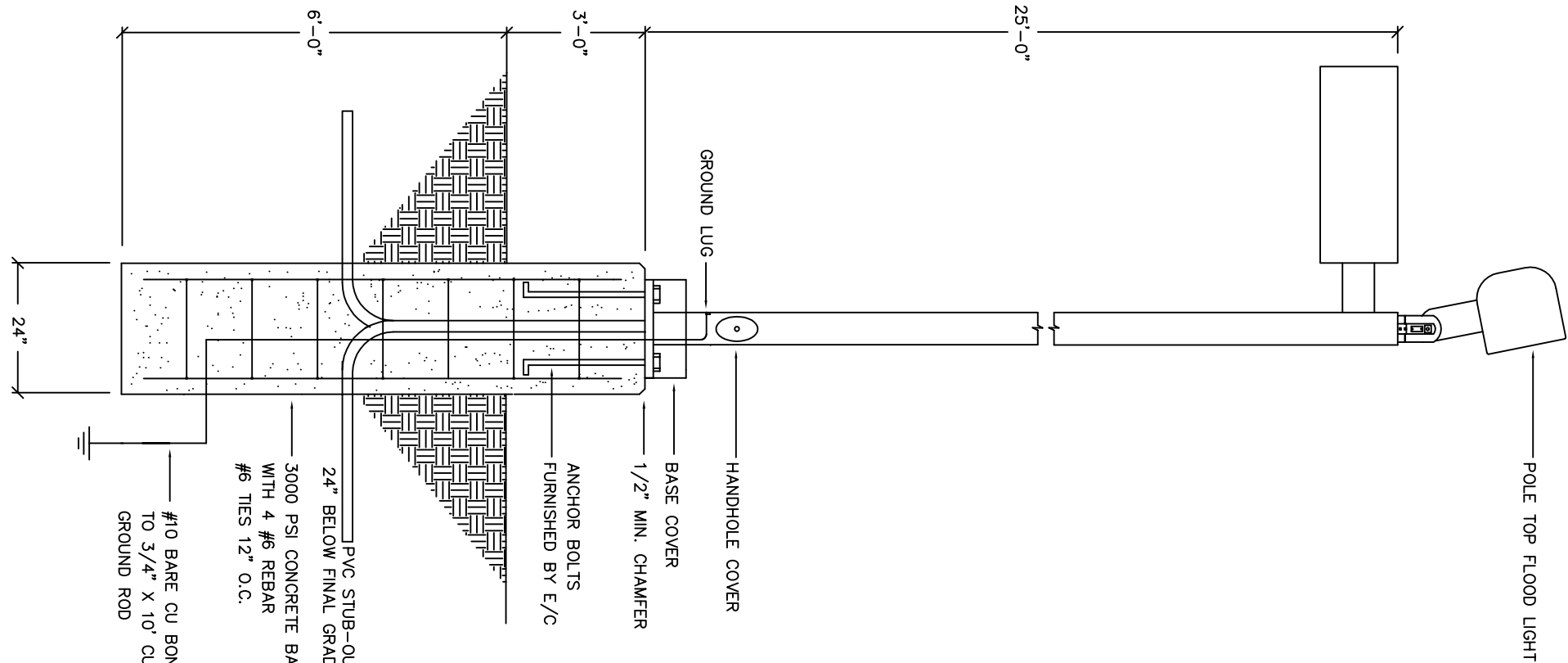
1 RECESSED DOWNLIGHT
E6.2 SCALE: NO SCALE



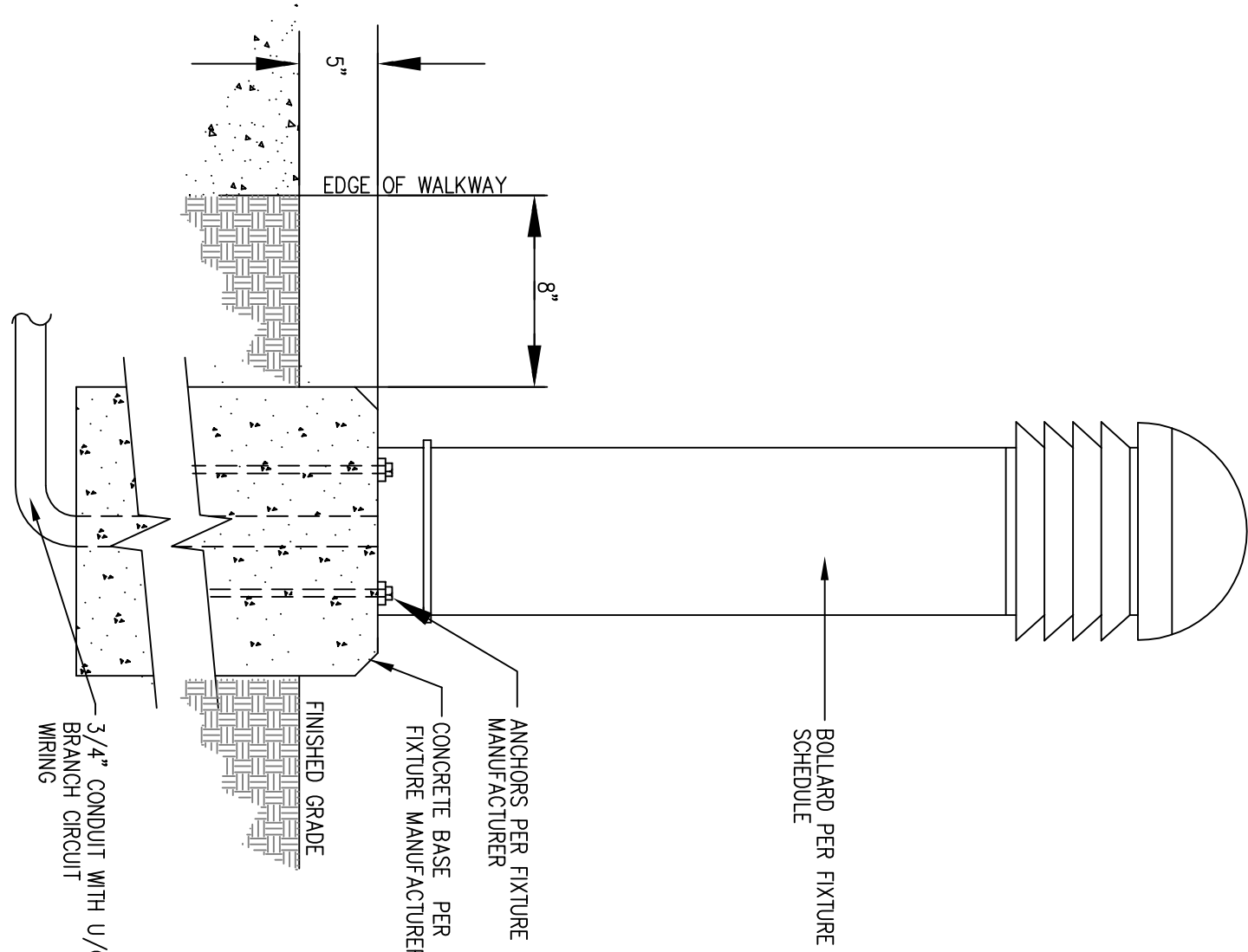
4 2X4 LAY-IN FIXTURE
E6.2 SCALE: NO SCALE



3 FLAG POLE LIGHT DETAIL
E6.2 SCALE: NO SCALE



2 POLE LIGHT DETAIL
E6.2 SCALE: NO SCALE



5 BOLLARD DETAIL
E6.2 SCALE: NO SCALE