



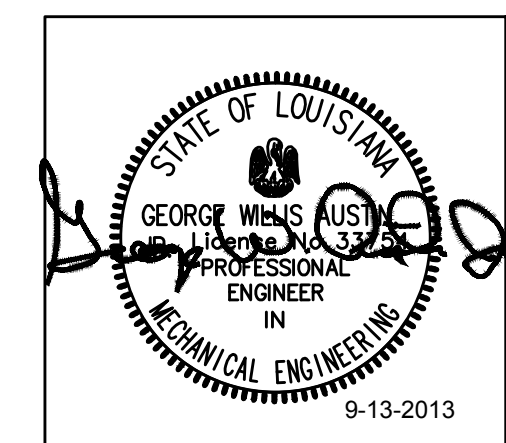
6800 S Creek Rd, Charlotte, NC 28277  
Ph:(704) 625-6554 Fax:(704) 919-5822  
EMAIL:ashish@mishraarch.com  
WEB: www.mishraarch.com



212 N. McDowell St.  
Suite 204  
Charlotte, NC 28204  
(P) 704.334.7363  
(F) 704.347.0093  
www.shultzeg.com  
SEG - 13-039

[illegible]

Information contained on this drawing and in all digital files associated is authorized for use on the project named herein only and is the property of MISHRA ARCHITECTURE PLLC and may not be reproduced in any manner without express written or verbal permission from authorized individuals. Original drawing is 24"x36" and scales are as indicated. © 2011 MISHRA ARCHITECTURE PLLC



### KEY PLAN

Southern Hospitality  
Services

Hampton Inn and Suites

5400 I-20 & Frontage Rd.  
Monroe, LA 71201

Drawing Title

Third Floor Plan - Fire Protection

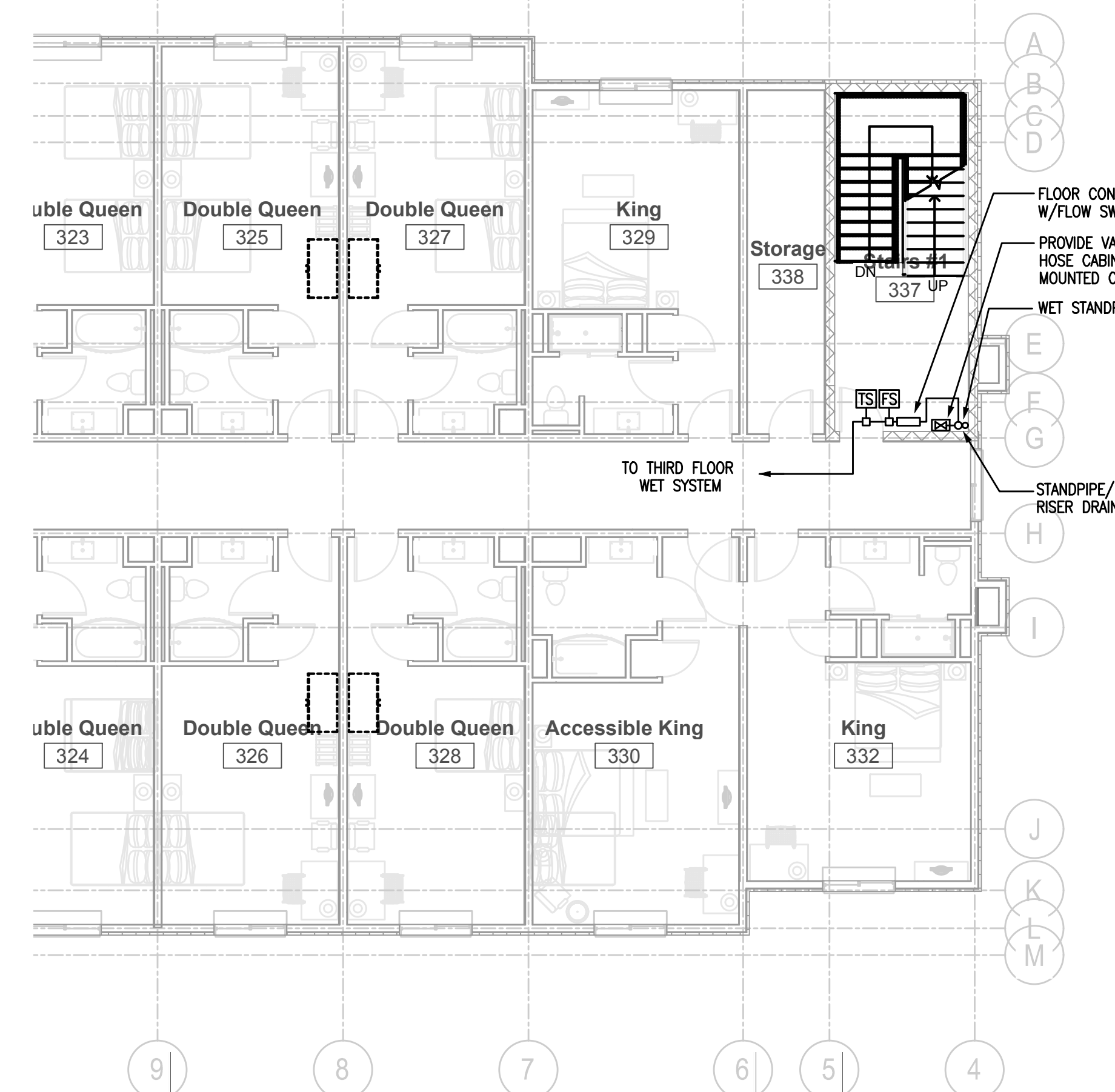
Phase  
FOR CONSTRUCTION

Project No.	12-111
Prepared by	JCF
Checked by	WGA
Date	September 16, 2013

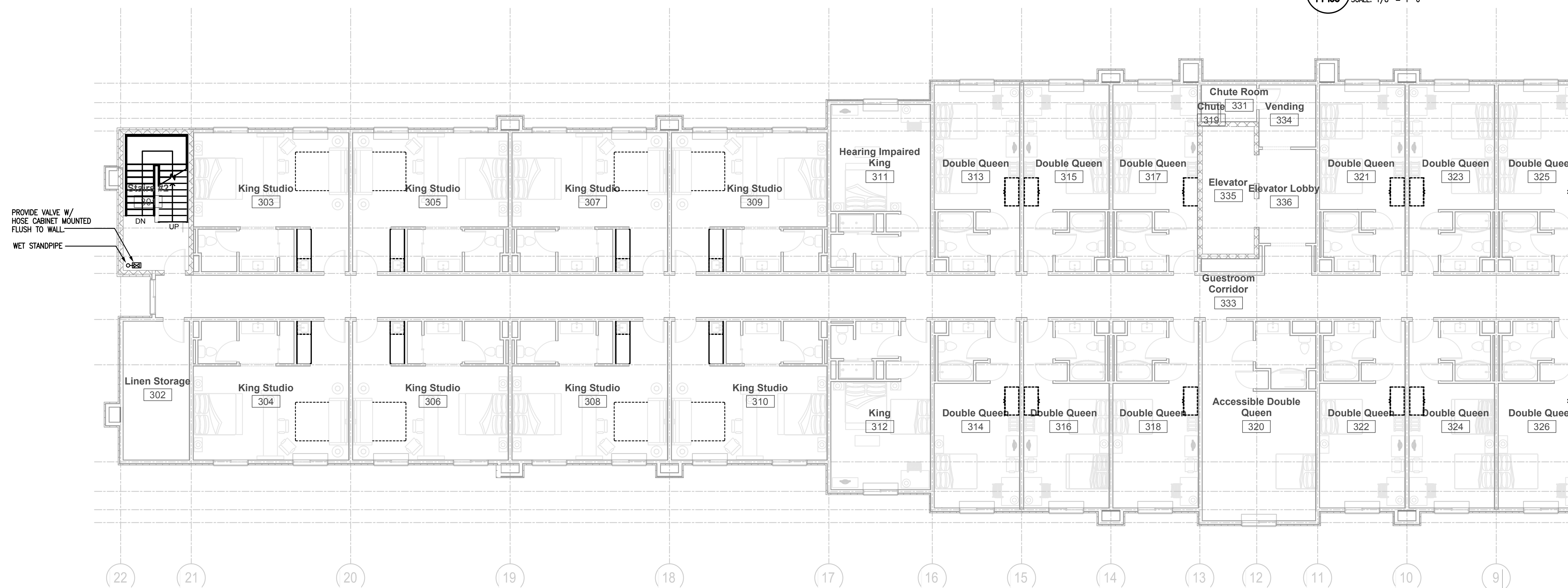
Sheet No.

FP103

Released fo



1 PARTIAL THIRD FLOOR PLAN - FIRE PROTECTION  
FP103 SCALE: 1/8" = 1'-0"



**1** PARTIAL THIRD FLOOR PLAN - FIRE PROTECTION  
**FP103** SCALE: 1/8" = 1'-0"

Hampton Inn and Suites