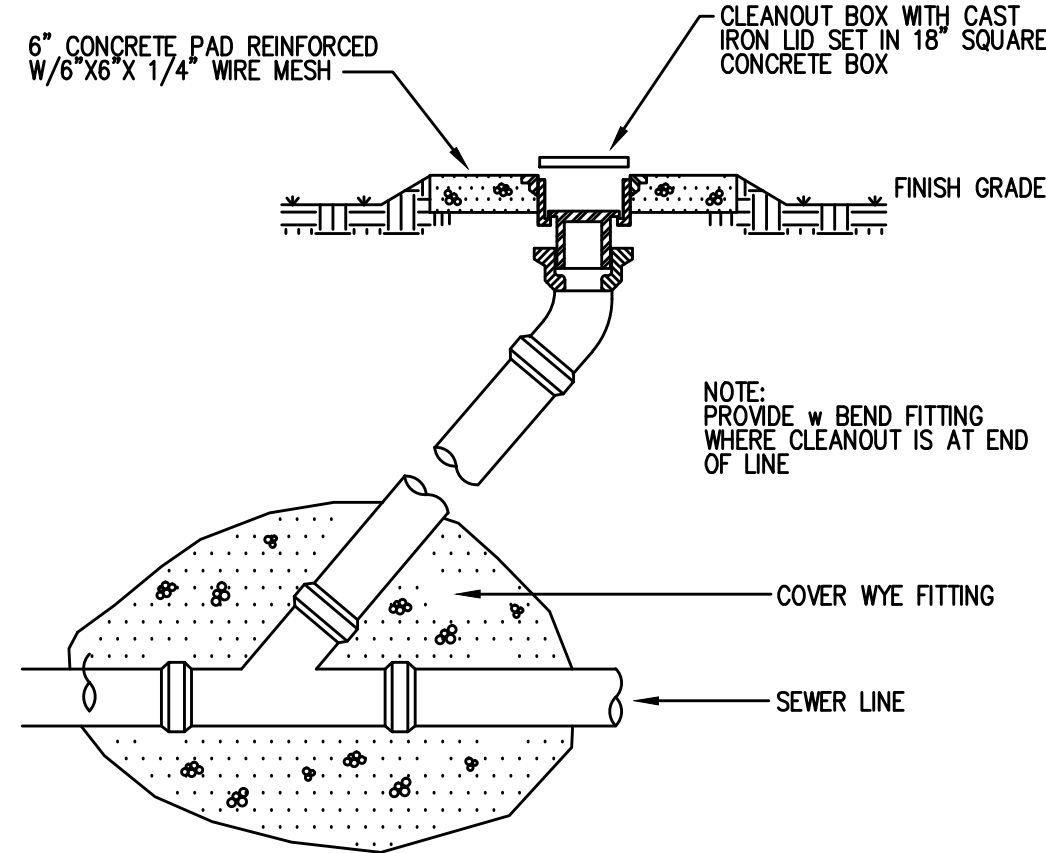
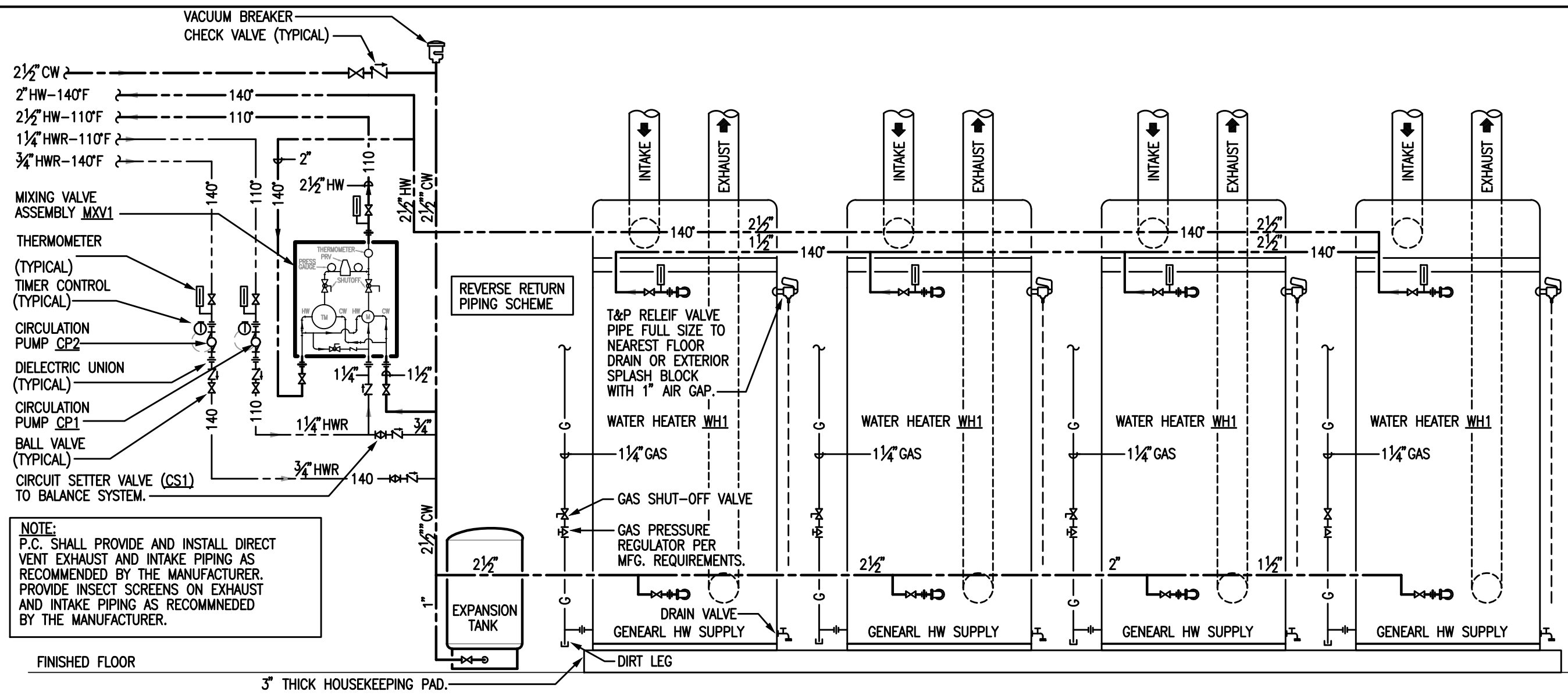


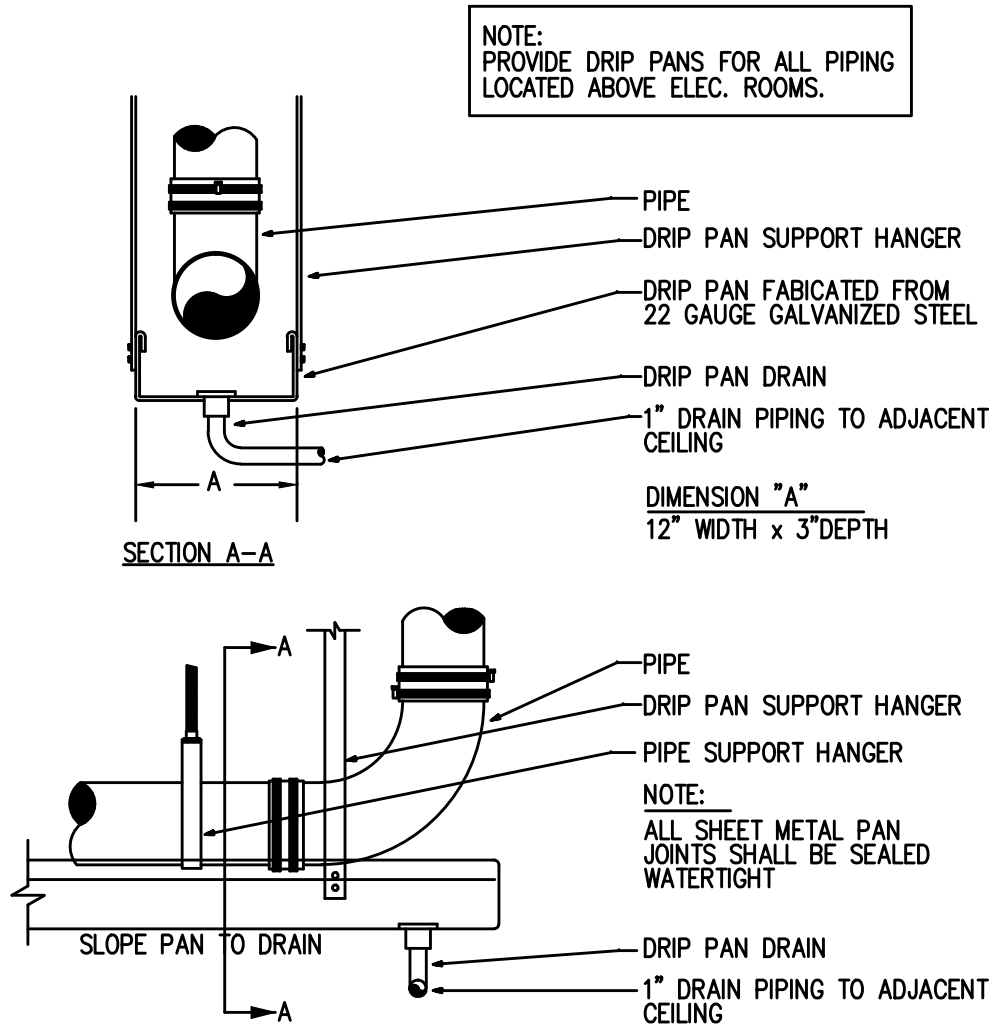
3 MOP SINK PIPING SCHEMATIC
P003 NO SCALE



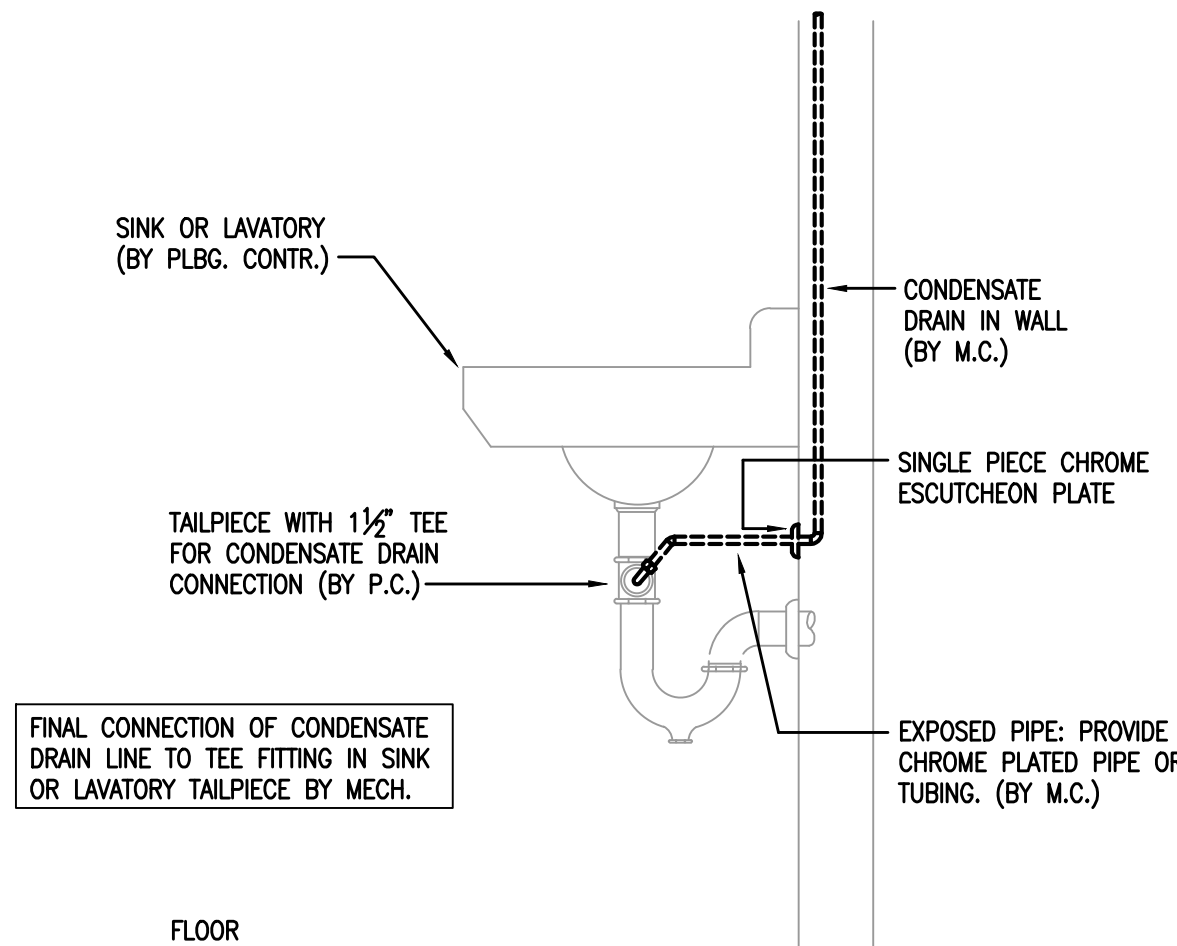
2 YARD CLEANOUT SCHEMATIC
P003 NO SCALE



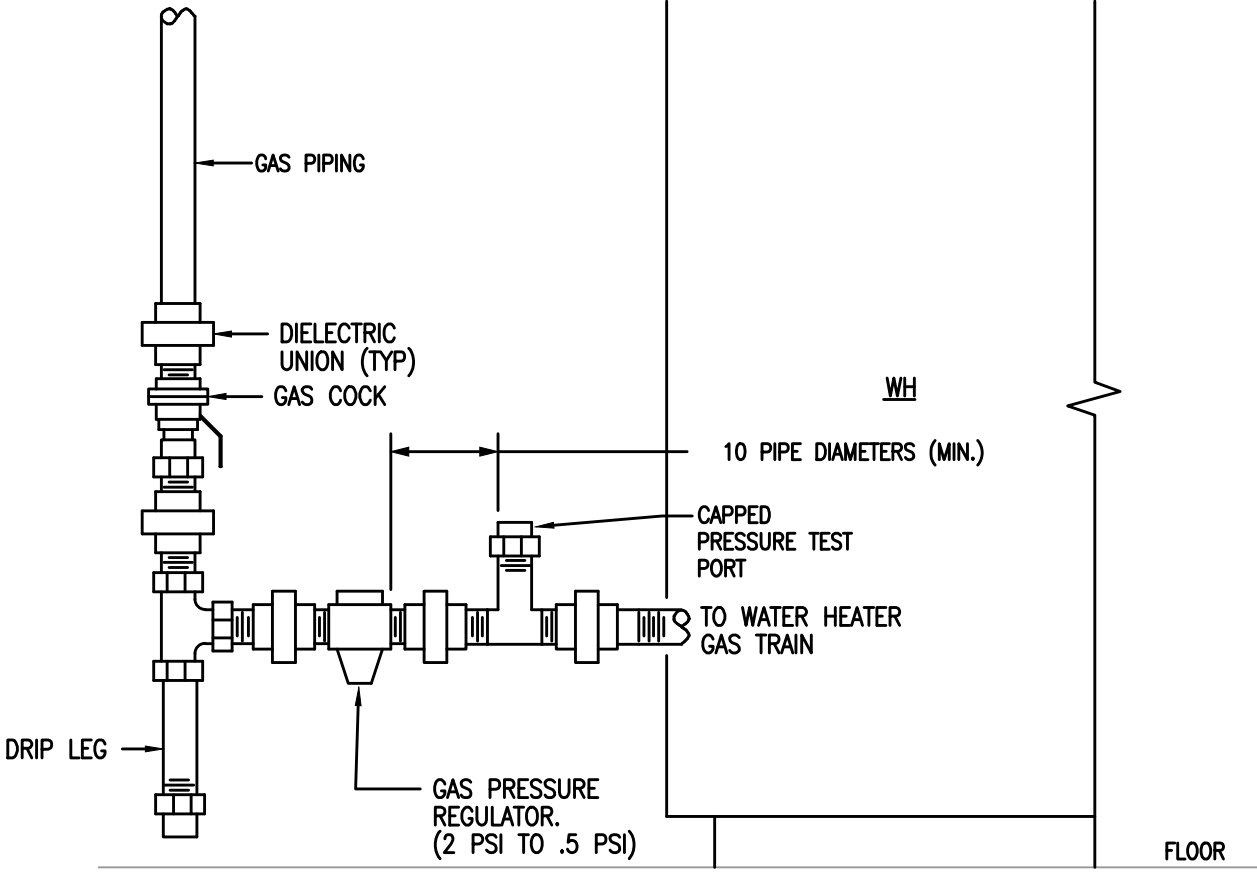
1 GAS FIRED WATER HEATING PIPING AND EQUIPMENT SCHEMATIC
P003 NO SCALE



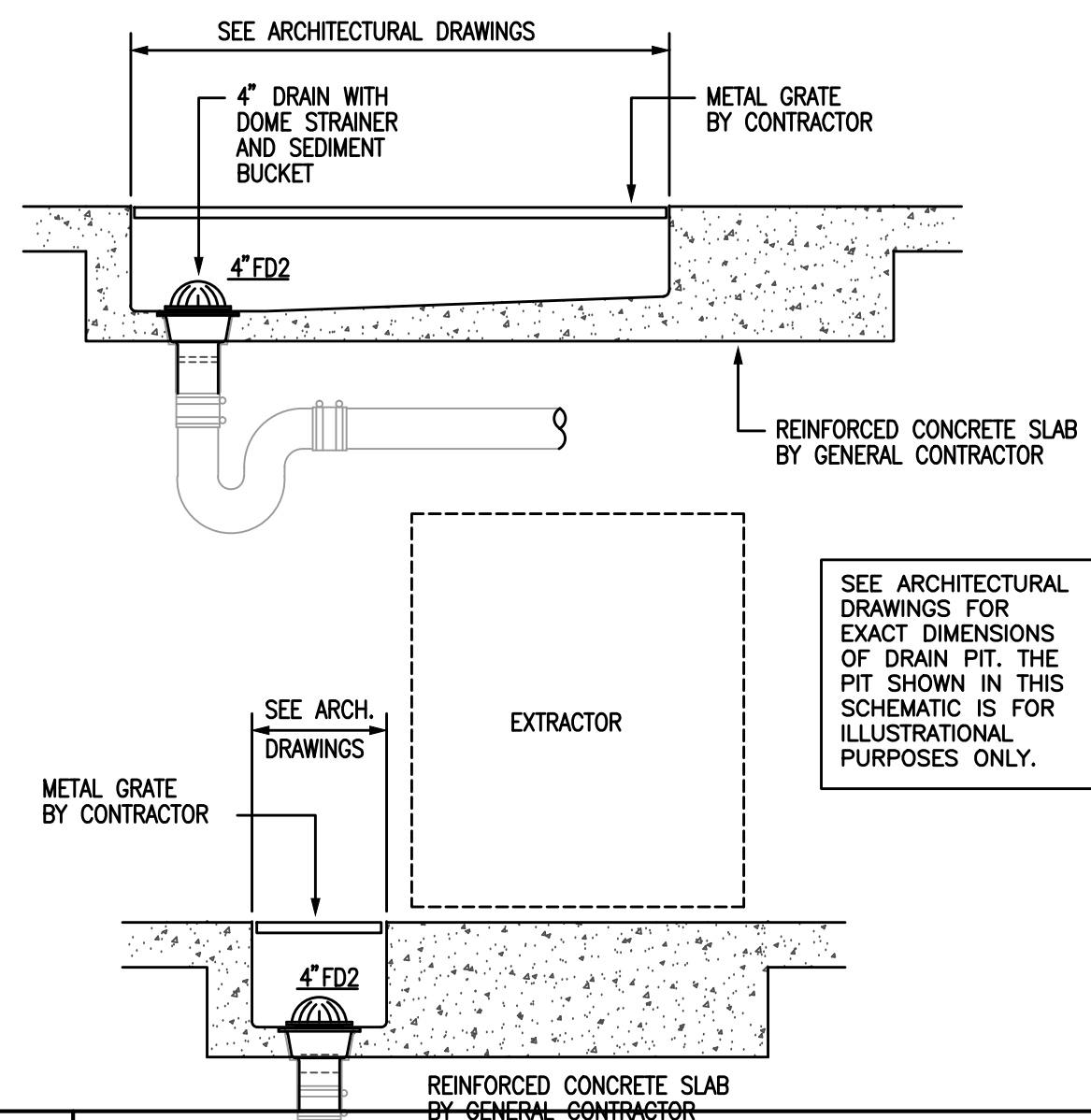
7 DRIP PAN SCHEMATIC
P003 NO SCALE



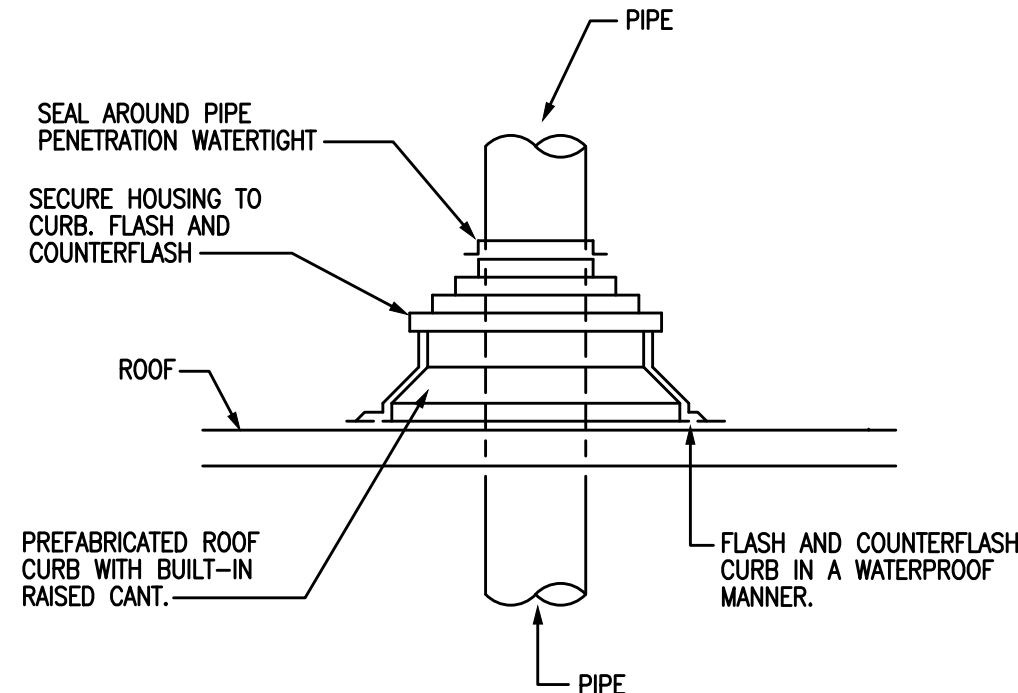
6 CONDENSATE DRAIN CONNECTION
P003 NO SCALE



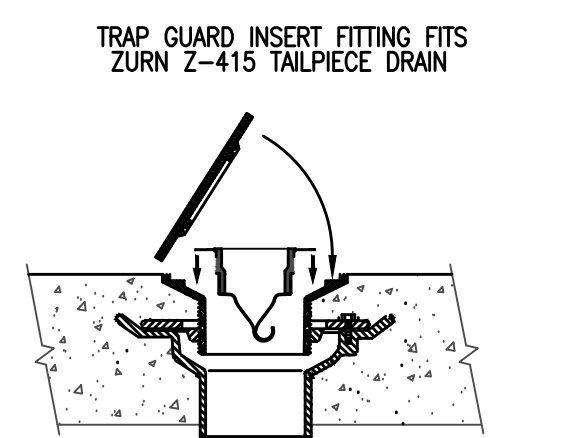
5 GAS SERVICE PRV PIPING SCHEMATIC
P003 NO SCALE



4 WASHER EXTRACTOR DRAIN SCHEMATIC
P003 NO SCALE

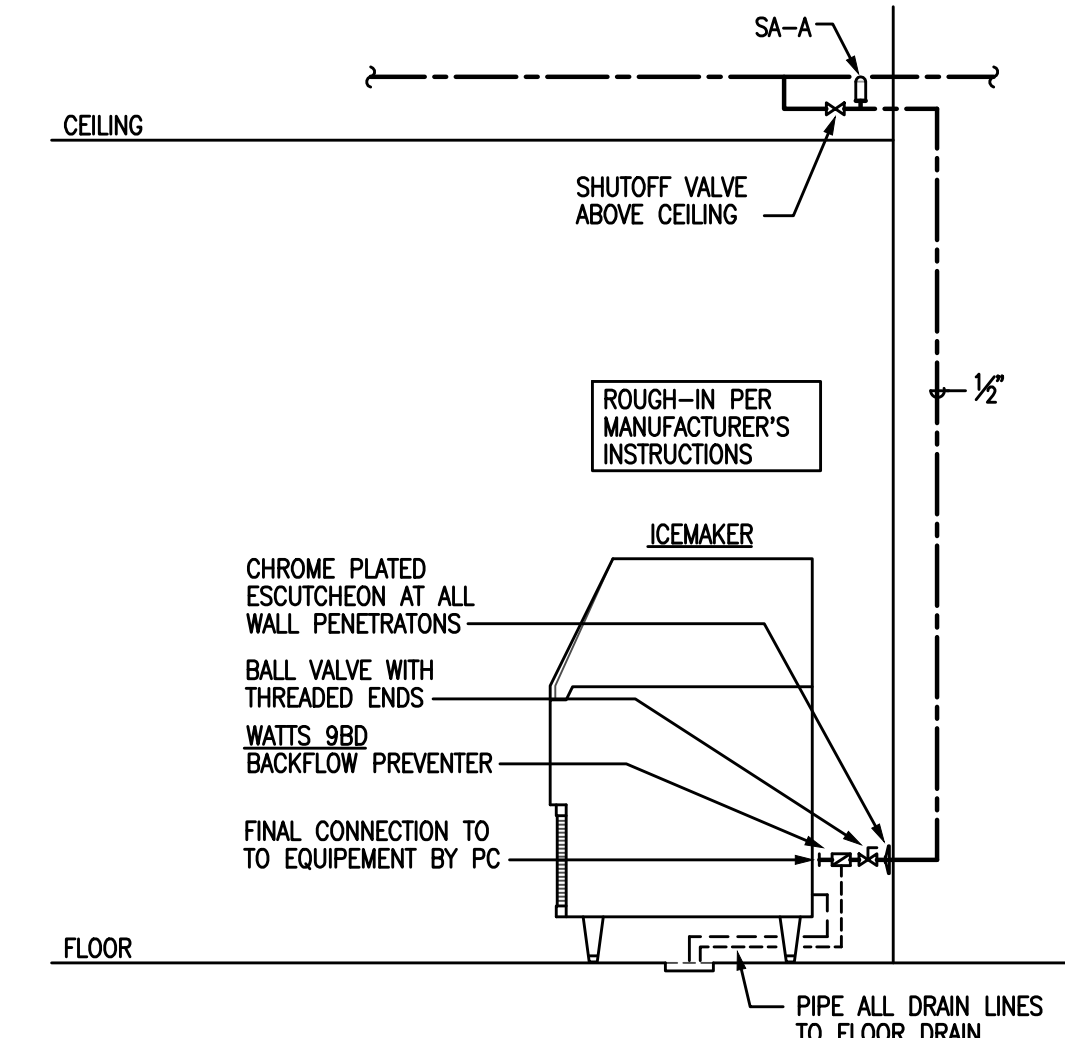


10 PIPE PORTAL DETAIL
P003 NO SCALE



- IMPORTANT NOTES:**
1. THIS TRAP GUARD INSERT CAN BE INSTALLED INTO ZURN #415 DRAIN TOPS TO PREVENT SEWER GAS.
 2. THE EXTRA WIDE FLANGE NEEDS TO HAVE AN ADHESIVE TYPE CAULK INSTALLED AROUND THE BOTTOM EDGE.
 3. MOST Z415 TAIL PIECES HAVE 4 PROTRUSIONS INSIDE THE 3 1/2" OPENING SO THE SEAL MUST BE MADE AROUND THE EDGE OF THE TO FLANGE. MAKE SURE INSIDE OF TAILPIECE IS CLEAN.
- NOTE: CARE SHOULD BE TAKEN NOT TO TOUCH THE ELASTOMERIC FLEXIBLE MATERIAL WITH THE PRIMER.

9 TRAP GUARD INSERT FOR FLOOR DRAINS
P003 NO SCALE



8 ICEMAKER PIPING SCHEMATIC
P003 NO SCALE

REVISIONS		
No.	Date	Description

Information contained on this drawing and in all digital files associated is authorized for use on the project named herein only and is the property of MISHRA ARCHITECTURE PLLC and may not be reproduced in any manner without express written or verbal permission from authorized individuals. Original drawing is 24"x36" and scales are as indicated. © 2011 MISHRA ARCHITECTURE PLLC

