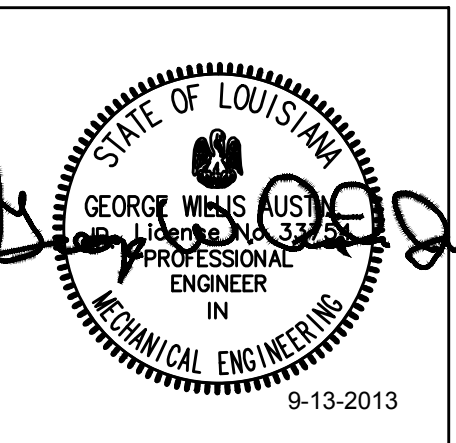




REVISIONS		
No.	Date	Description

Information contained on this drawing and in all digital files associated is authorized for use on the project named herein only and is the property of MISHRA ARCHITECTURE PLLC and may not be reproduced in any manner without express written or verbal permission from authorized individuals. Original drawing is 24"x36" and scales are as indicated. © 2011 MISHRA ARCHITECTURE PLLC



KEY PLAN

Southern Hospitality  
Services

Hampton Inn and  
Suites

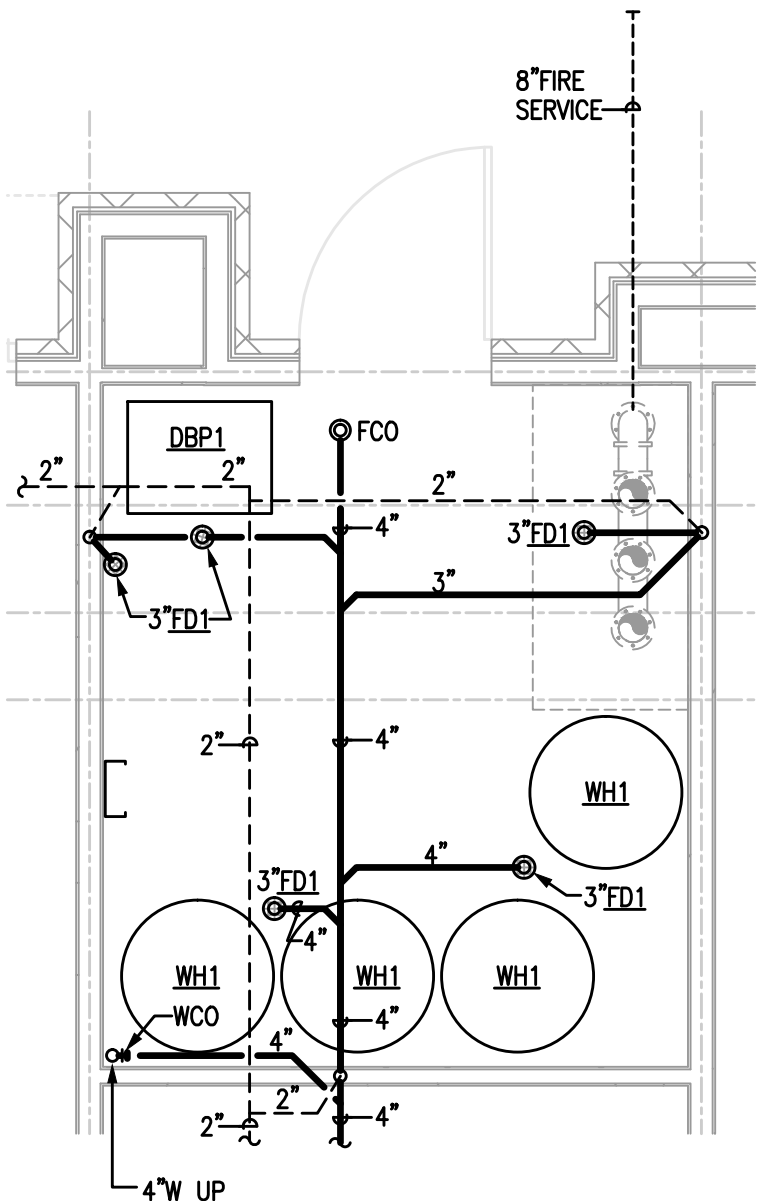
5400 I-20 & Frontage Rd.  
Monroe, LA 71201

Drawing Title  
Enlarged Plans - Plumbing

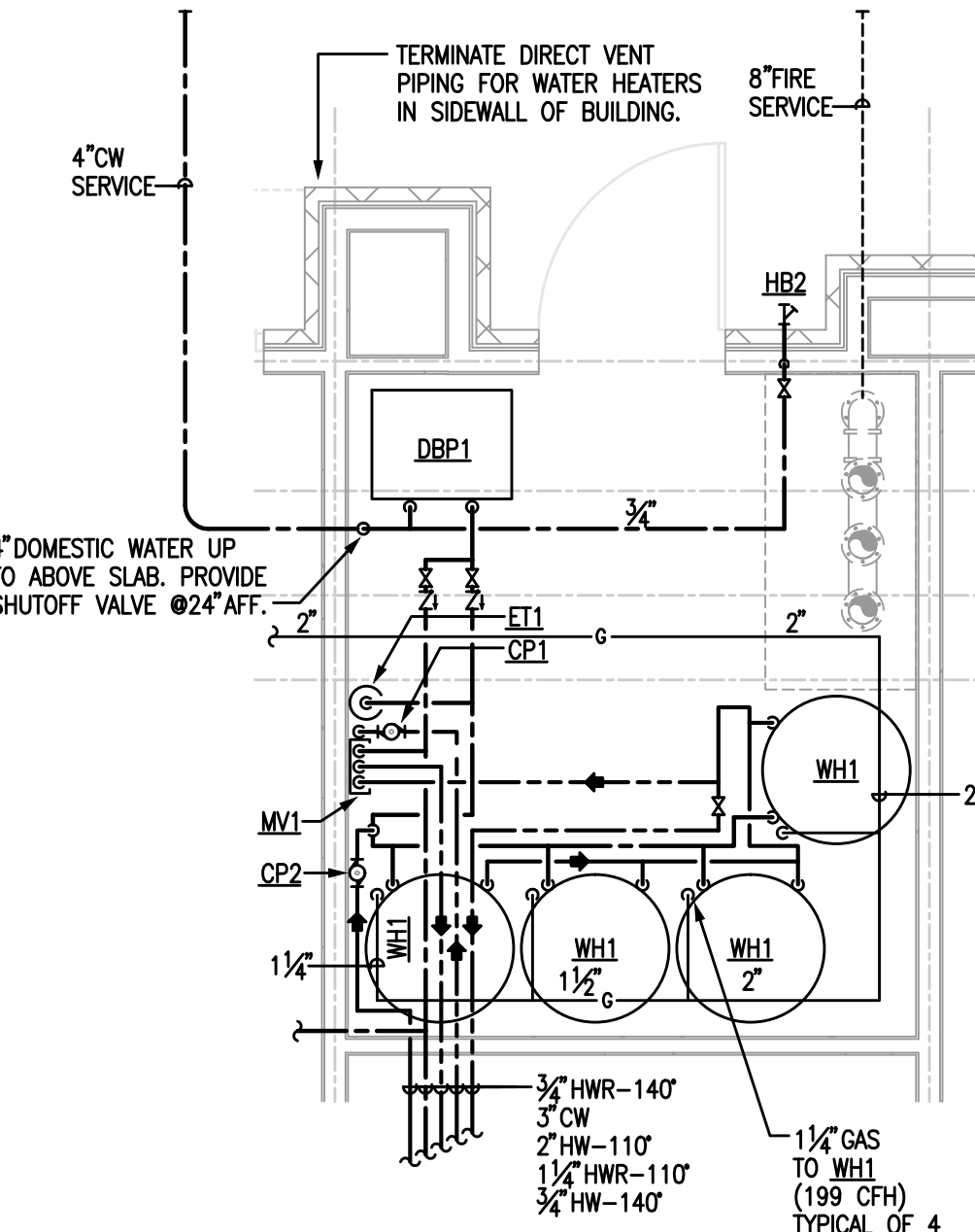
Phase  
FOR CONSTRUCTION

Project No.	12-111	Sheet No.	P301
Prepared by	JCF		
Checked by	WGA		
Date	September 16, 2013		
Released for			

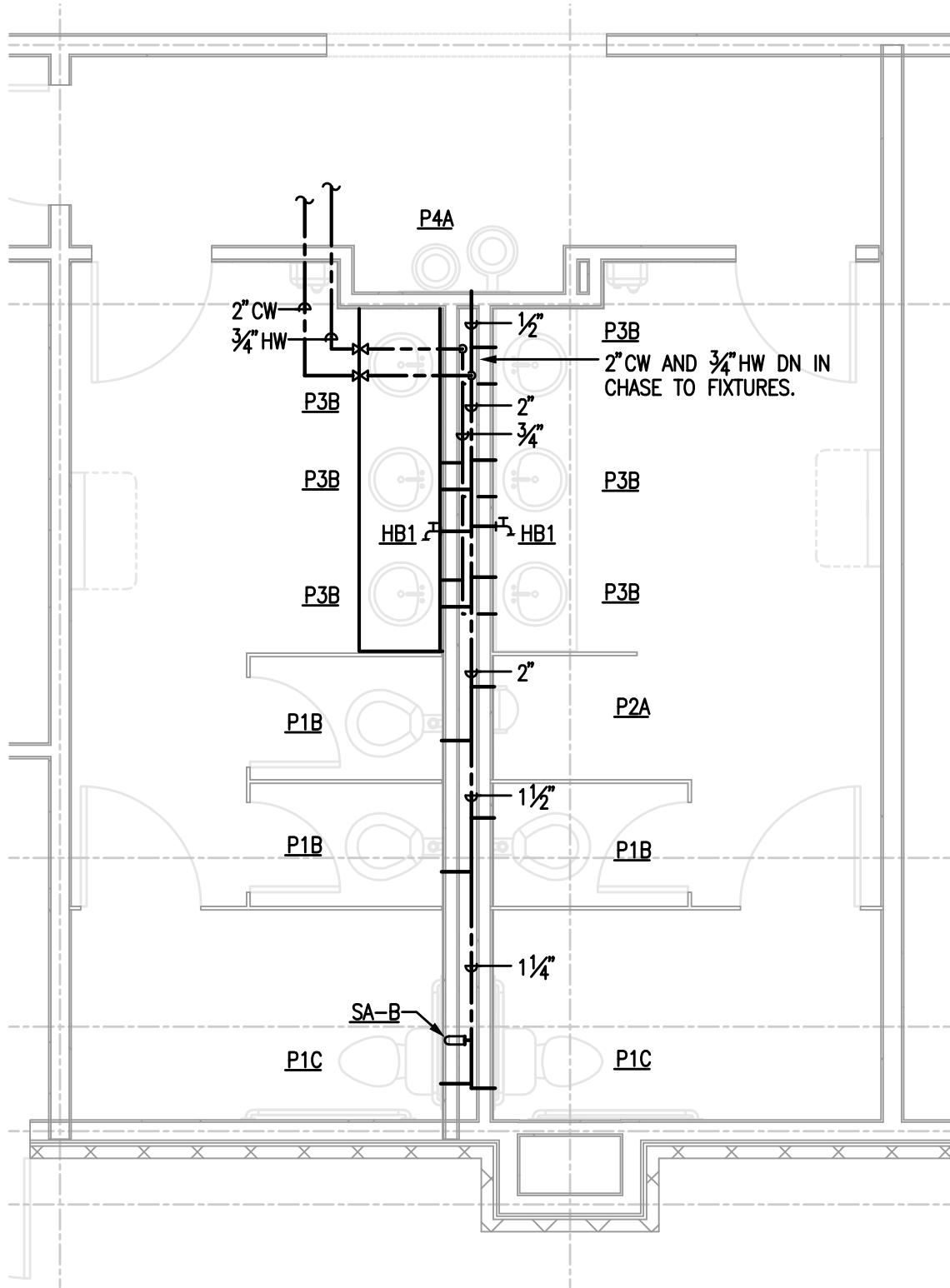
Hampton Inn and Suites



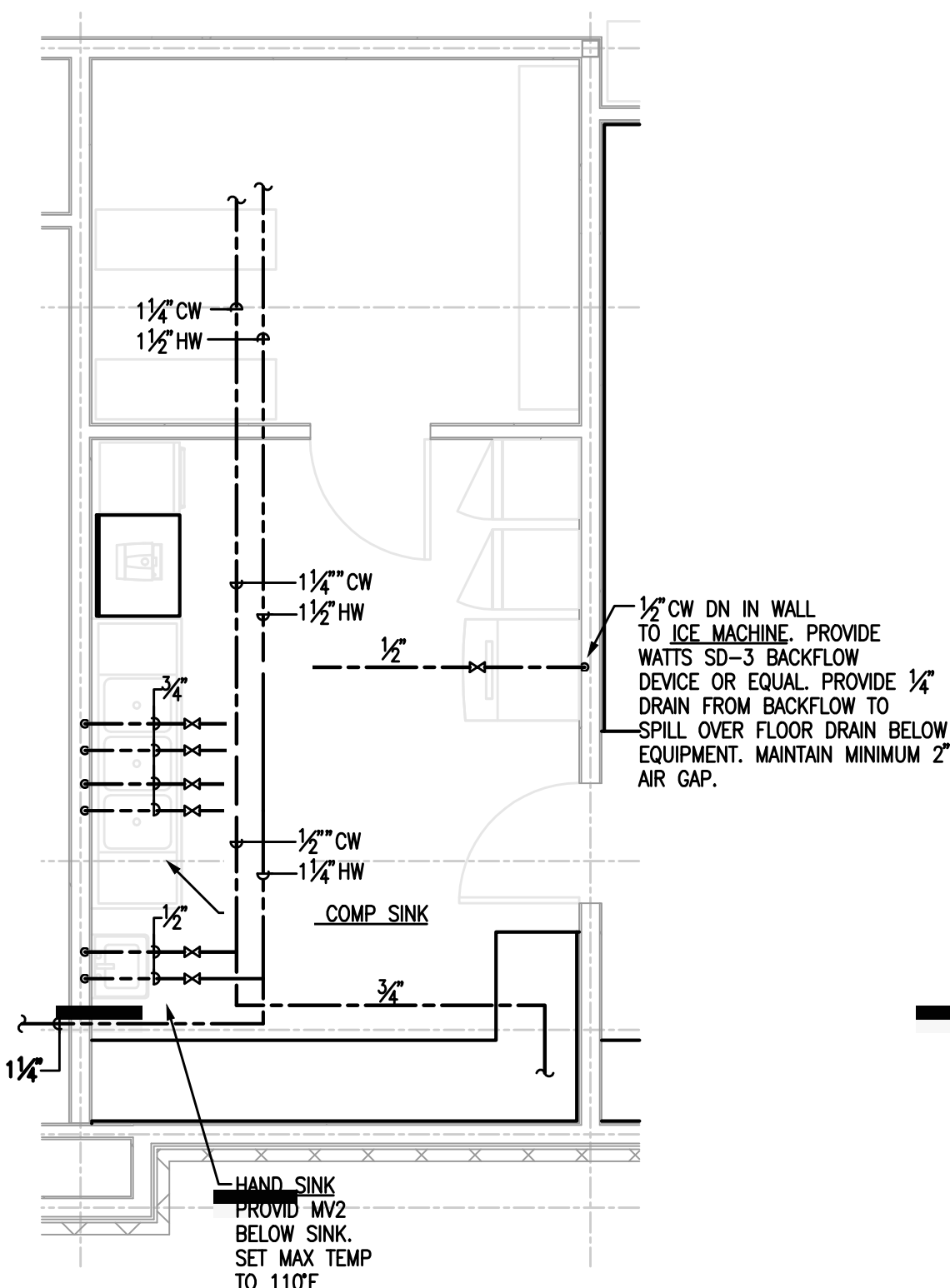
8 ENLARGED DOUBLE QUEEN PLAN - PLUMBING  
P301 SCALE: 1/4" = 1'-0"



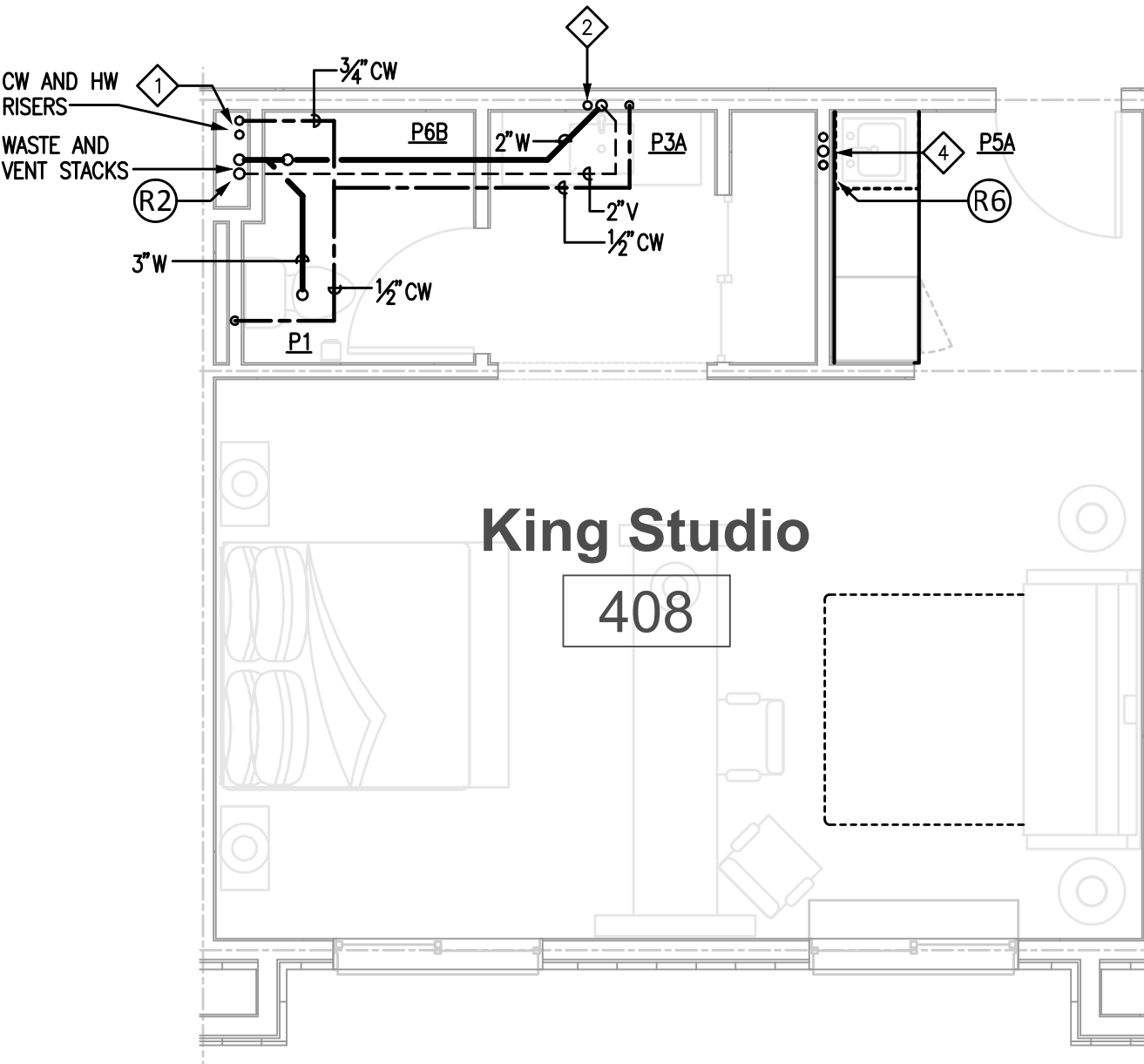
7 ENLARGED DOUBLE QUEEN PLAN - PLUMBING  
P301 SCALE: 1/4" = 1'-0"



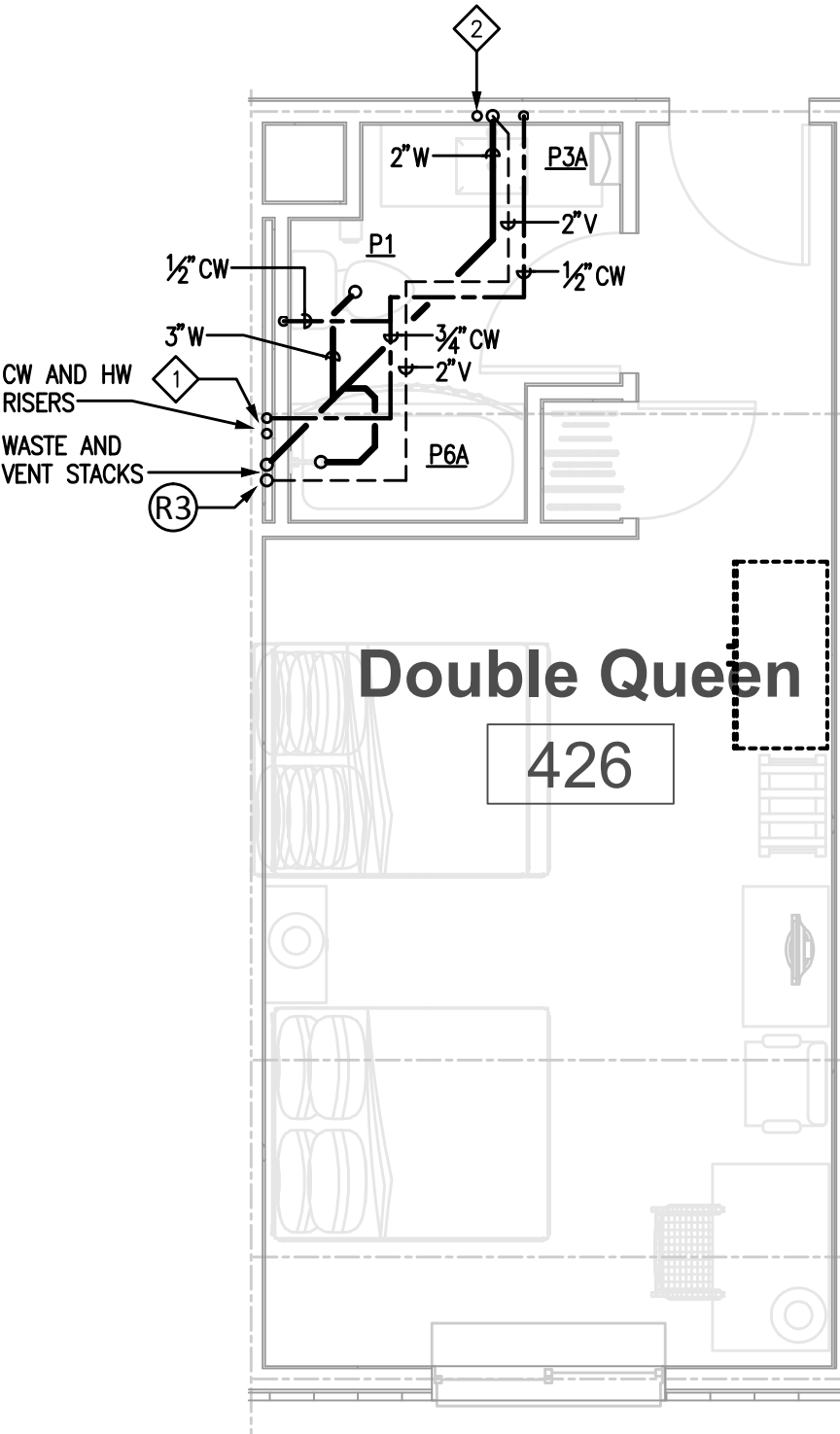
6 ENLARGED KING PLAN - PLUMBING  
P301 SCALE: 1/4" = 1'-0"



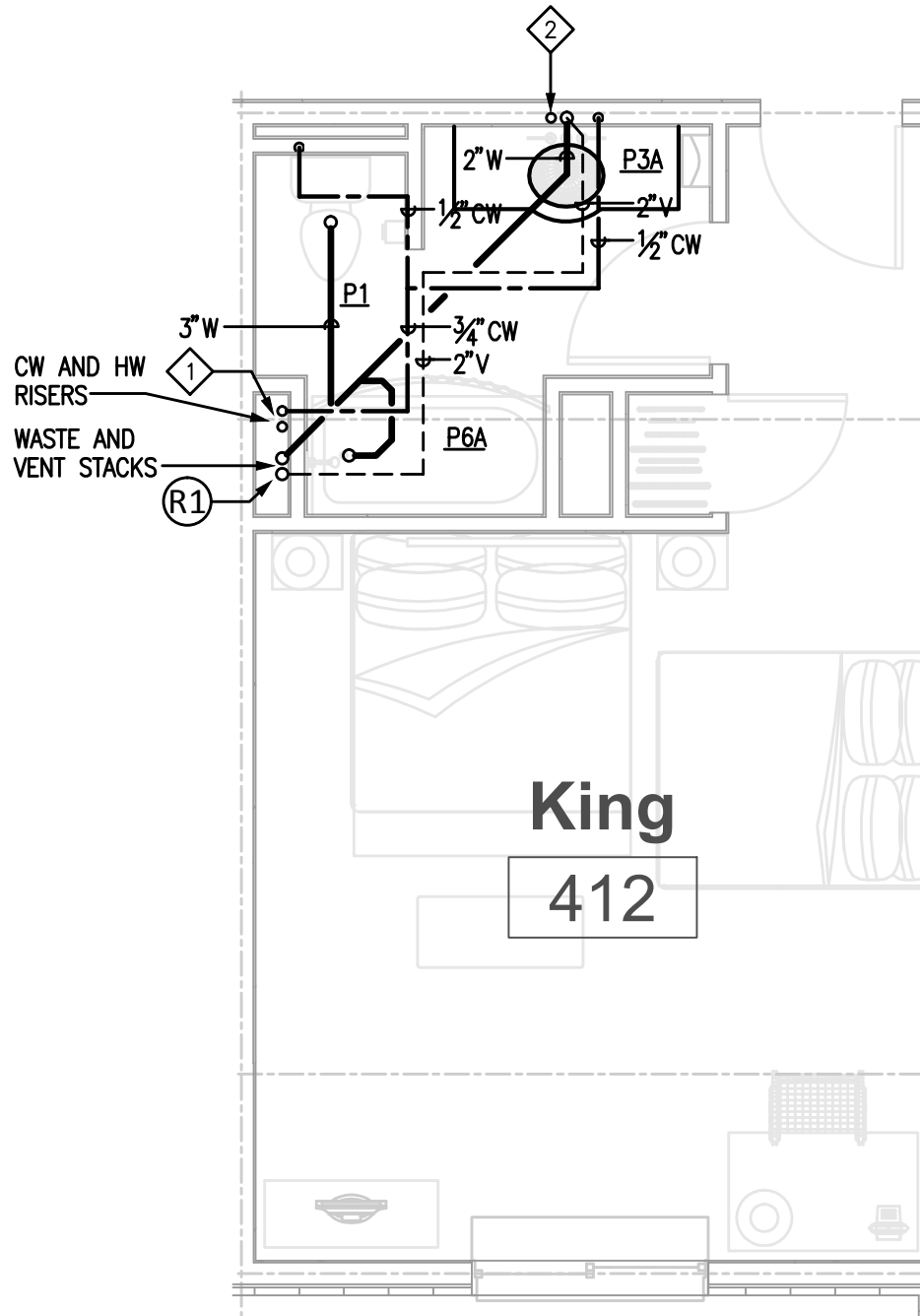
5 ENLARGED ACCESSIBLE KING PLAN - PLUMBING  
P301 SCALE: 1/4" = 1'-0"



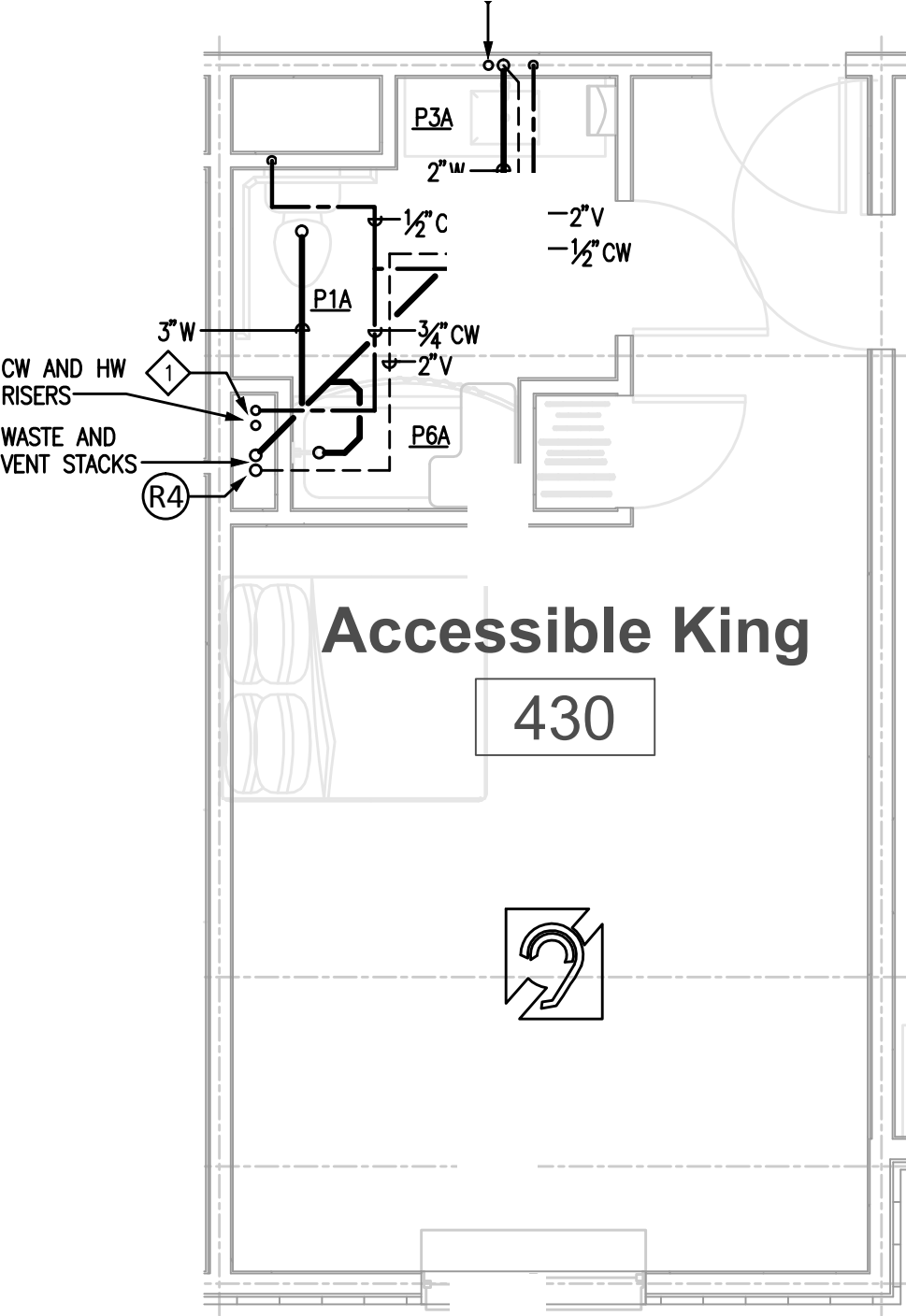
4 ENLARGED KING STUDIO PLAN - PLUMBING  
P301 SCALE: 1/4" = 1'-0"



3 ENLARGED DOUBLE QUEEN PLAN - PLUMBING  
P301 SCALE: 1/4" = 1'-0"



2 ENLARGED KING PLAN - PLUMBING  
P301 SCALE: 1/4" = 1'-0"



1 ENLARGED ACCESSIBLE KING PLAN - PLUMBING  
P301 SCALE: 1/4" = 1'-0"