

REVISIONS		
No.	Date	Description
1	11.01.13	Pool Equip., Ftgs & Rf Slope

Information contained on this drawing and in all digital files associated is authorized for use on the project named herein only and is the property of MISHRA ARCHITECTURE PLLC and may not be reproduced in any manner without express written or verbal permission from authorized individuals. Original drawing is 24"x36" and scales are as indicated. © 2011 MISHRA ARCHITECTURE PLLC

KEY PLAN

Southern Hospitality
Services

Hampton Inn and
Suites

5400 I-20 & Frontage Rd.
Monroe, LA 71201

Drawing Title

Foundation
Sections and
Details

Phase
Construction Documents

Project No. 12-111

Prepared by AB/LW

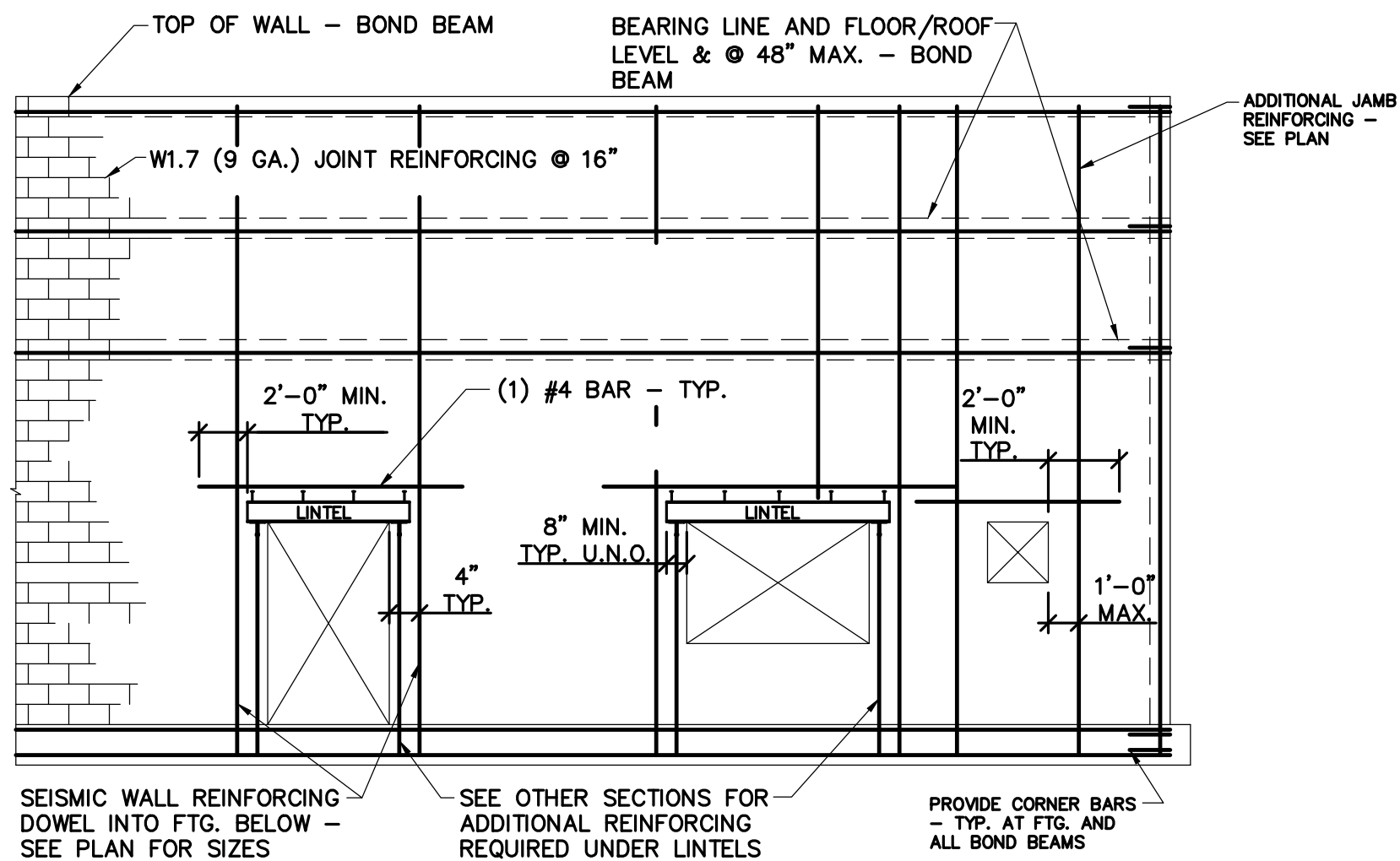
Checked by HLW

Date September 16, 2013

Released for

Sheet No. S302

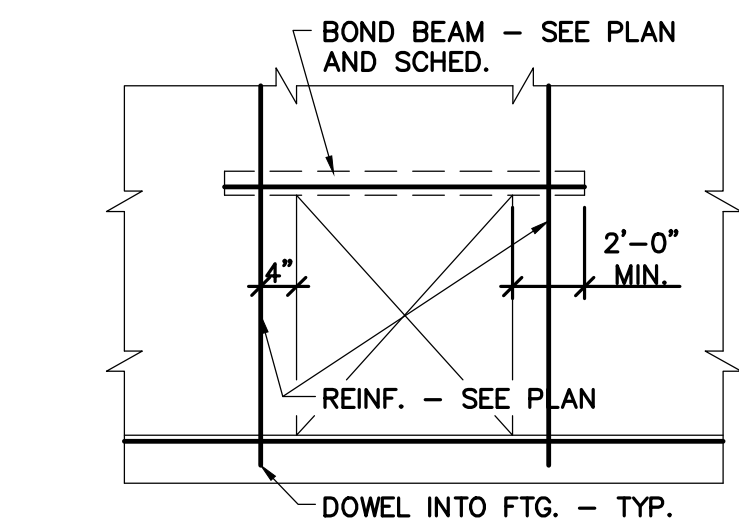
Hampton Inn and Suites



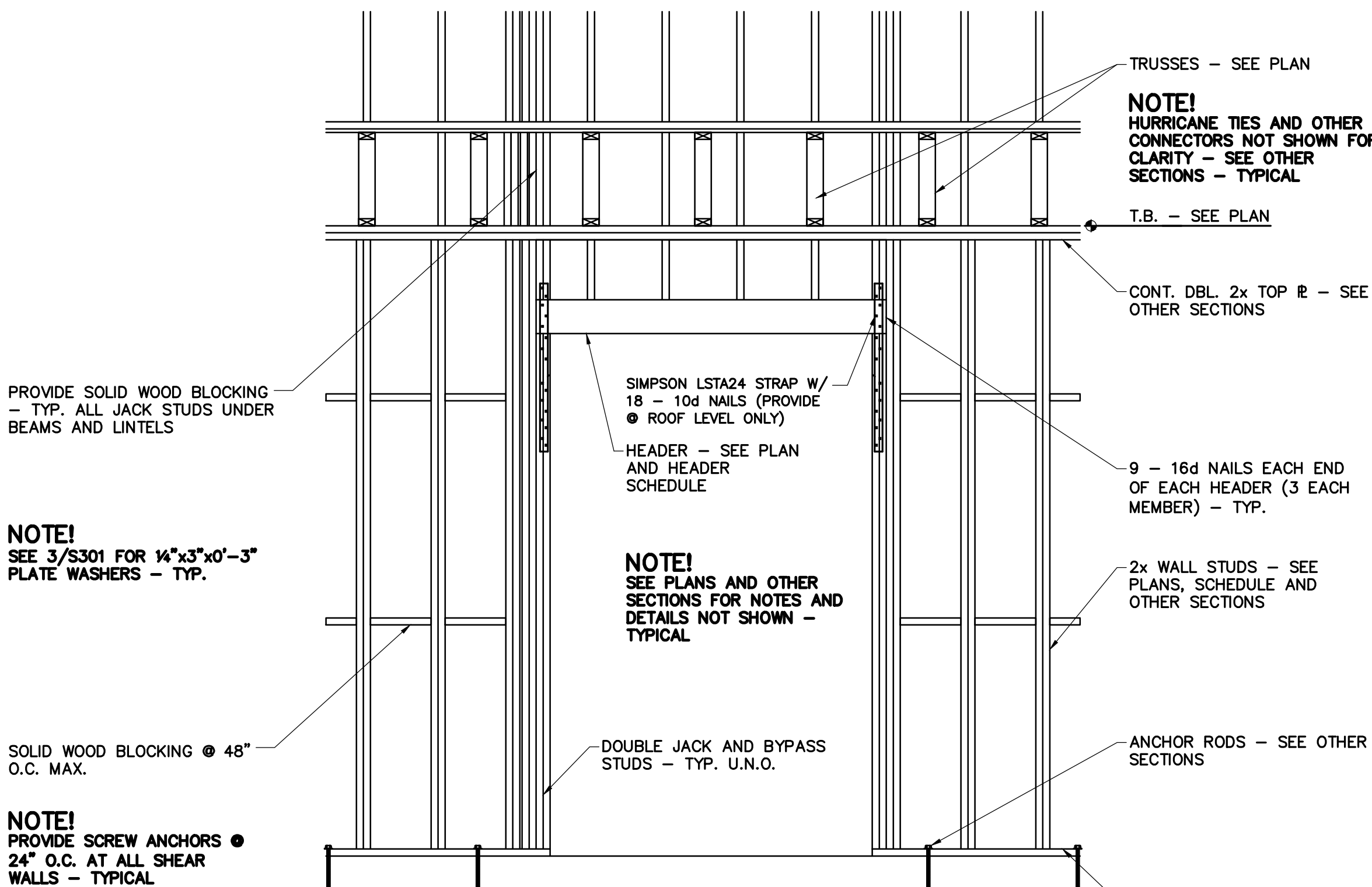
1 CMU WALL ELEVATION
NO SCALE - SPECIAL REINF. CMU WALL

INTERIOR & EXTERIOR SEISMIC MASONRY WALL REQUIREMENTS - (U.N.O.)

1. VERTICAL REBAR (SEE PLAN) DOWELED INTO FOOTING.
2. HORIZONTAL REBAR AT TOP OF WALL, AT BEARING LINES, AT TOP OF FOOTING AND @ 48" O.C. MAX.
3. PROVIDE W1.7 (9 GA.) TRUSS TYPE HORIZONTAL JOINT REINFORCEMENT @ 16" O.C.
4. PROVIDE REBAR (OR LINTEL) AROUND OPENINGS.
5. VERTICAL REBAR REQ'D EA. SIDE OF ALL VERT. WALL JOINTS (CONTROL & EXPANSION JOINTS).
6. LAP VERTICAL REBAR 48 BARØ (MIN. LAP 24").
7. GROUT ALL CELLS SOLID WHERE REBAR OCCURS.
8. ALL VERTICAL REBAR TO BE POSITIONED IN BLOCK CELL BY PREFABRICATED WIRE POSITIONER - SUBMIT FOR APPROVAL.
9. SEE BEAM OR LINTEL BEARING DETAILS FOR ADDITIONAL WALL REINFORCING REQUIRED UNDER LINTELS.
10. ALL BRICK TIES SHALL CONFORM WITH SEISMIC DESIGN CATEGORY REQUIREMENTS - SUBMIT FOR APPROVAL.
11. CONSTRUCT ALL WALLS IN 4'-0" LIFTS.
12. SEE OTHER SECTIONS FOR NOTES AND DETAILS NOT SHOWN.

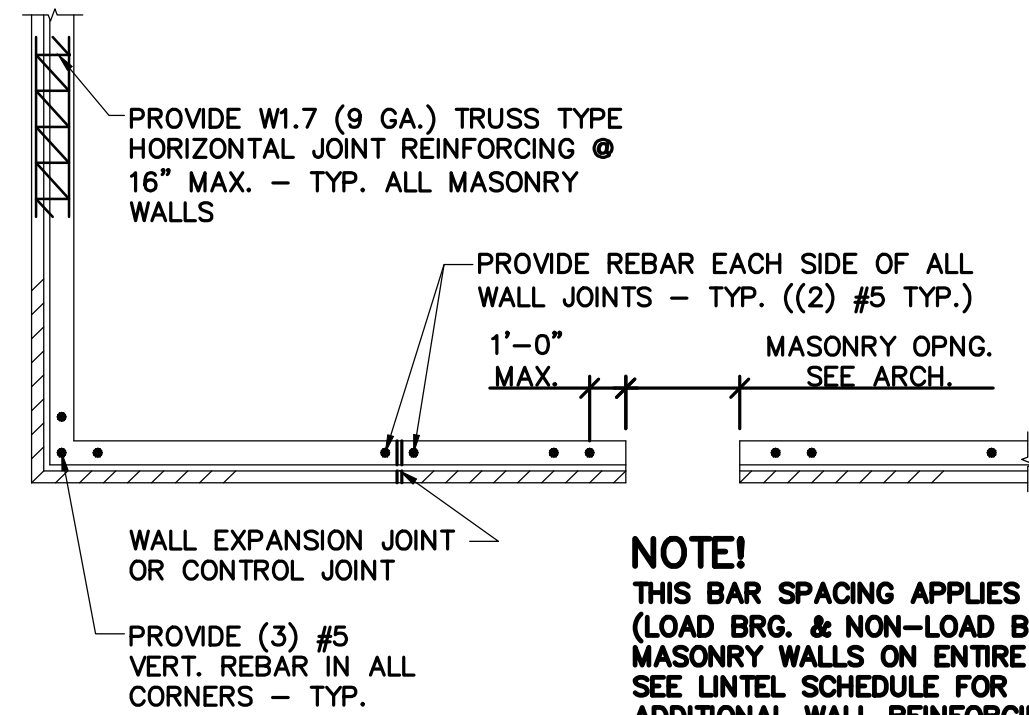


5 CMU BOND BEAM ELEVATION
NO SCALE SDC=D



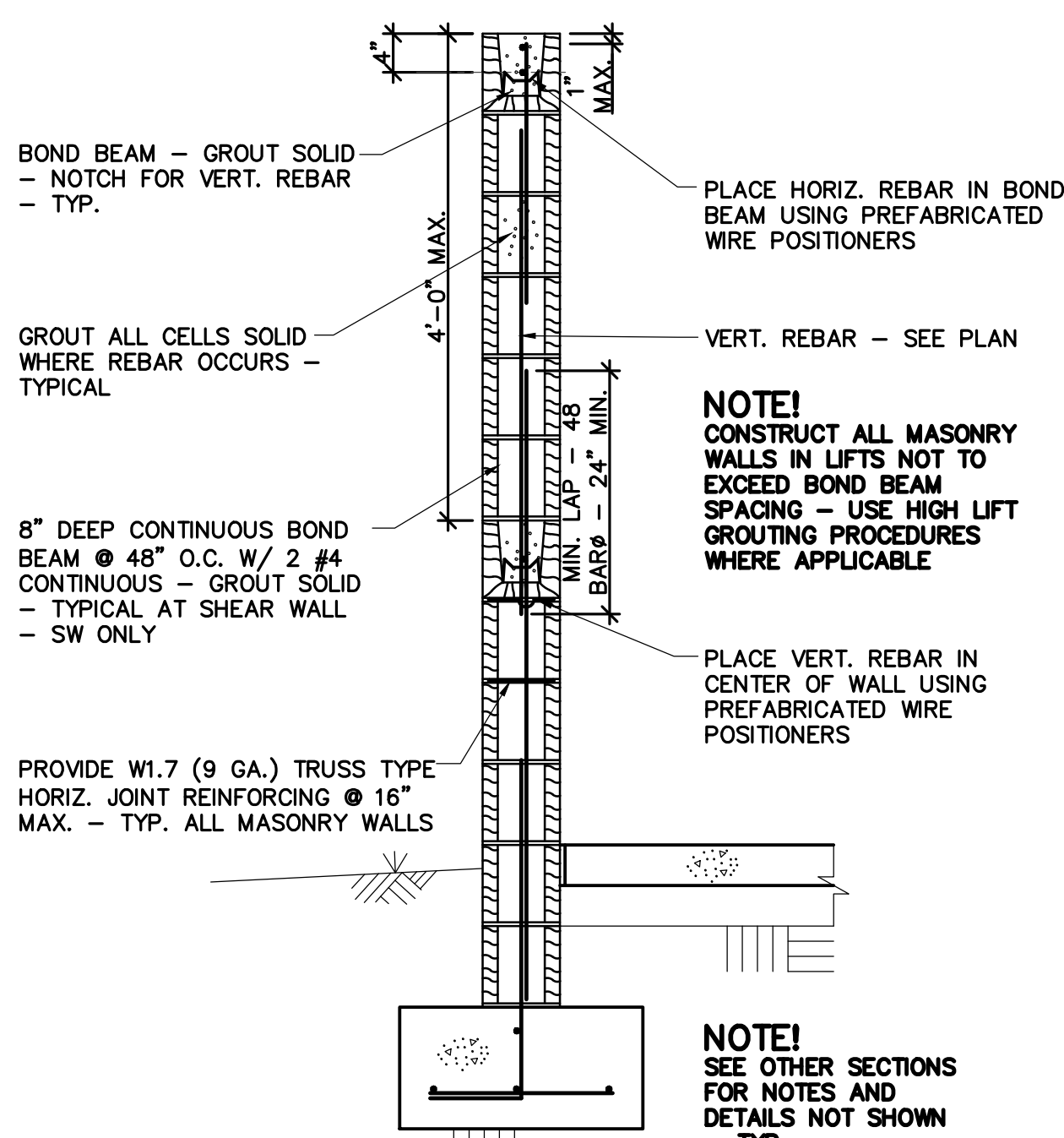
8 ELEVATION LOAD BEARING WOOD STUD WALL
NO SCALE

#5 @ 24" VERTICAL ALL 8" CMU WALLS - SEE SHEET S302 - PROVIDE W1.7 (9 GA.) TRUSS TYPE HORIZONTAL JOINT REINFORCING @ 16" MAX. ALL MASONRY WALLS - TYPICAL UNLESS NOTED OTHERWISE

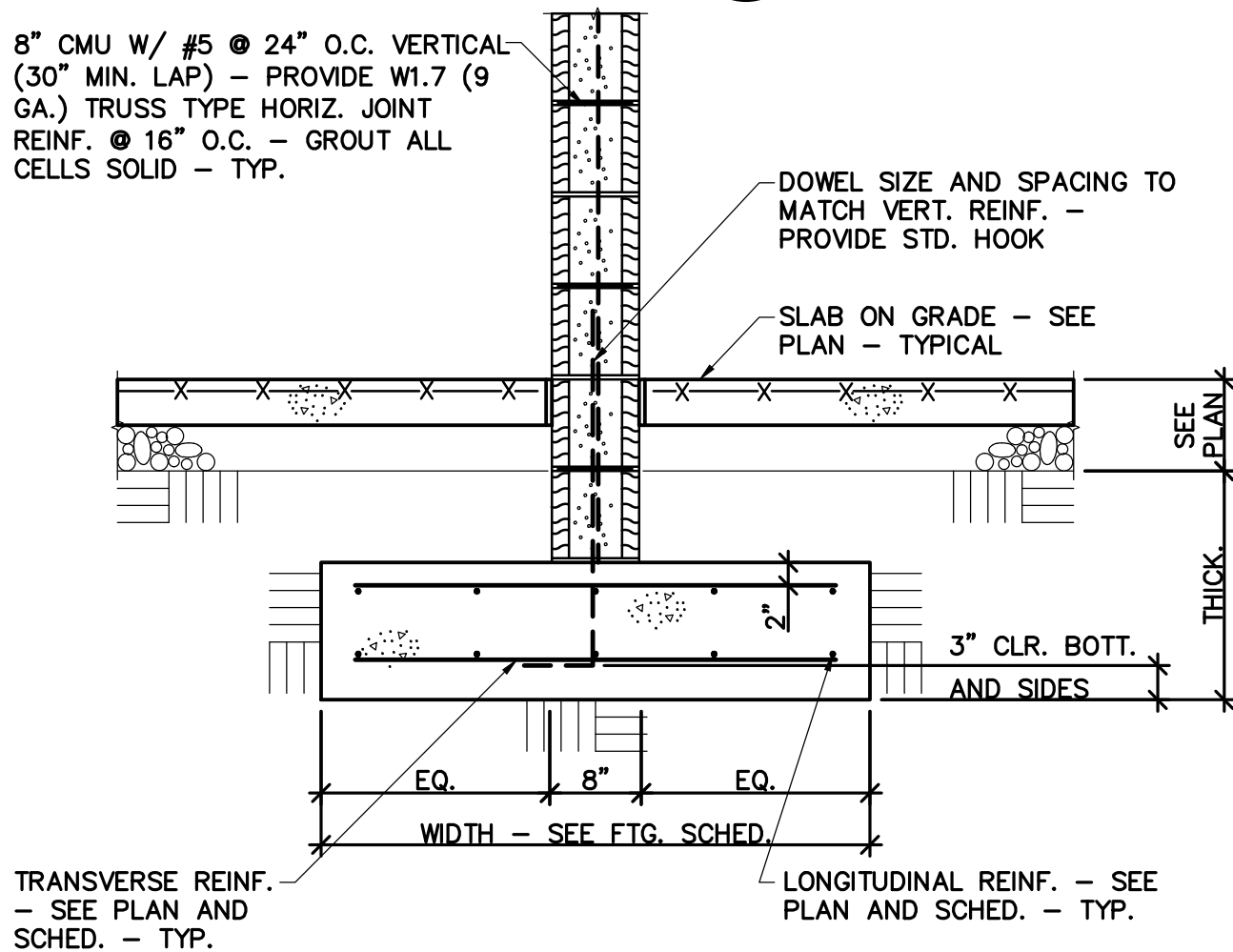


2 CMU WALL REINFORCING
NO SCALE

NOTE!
THIS BAR SPACING APPLIES TO ALL (LOAD BRG. & NON-LOAD BRG.) MASONRY WALLS ON ENTIRE JOB. SEE LINTEL SCHEDULE FOR ADDITIONAL WALL REINFORCING REQ'D. UNDER LINTEL BRG.



3 CMU WALL SECTION
NO SCALE



6 INTERIOR WALL FOOTING
3/4" = 1'-0"

NOTE!
SEE ARCH. DWGS. FOR NOTES AND DETAILS NOT SHOWN - TYPICAL

SEE ARCH. DWGS. FOR EXTERIOR FINISH - TYP.

SEE CIVIL/SITE DWGS. - TYPICAL

BASE R AND ANCHOR RODS - SEE 10/S302 - TYP.

ENCASE STEEL COLUMN IN LEAN CONCRETE

9 SECTION AT COLUMN
3/4" = 1'-0"

NOTE!
SEE ARCH. DWGS. FOR NOTES AND DETAILS NOT SHOWN - TYPICAL

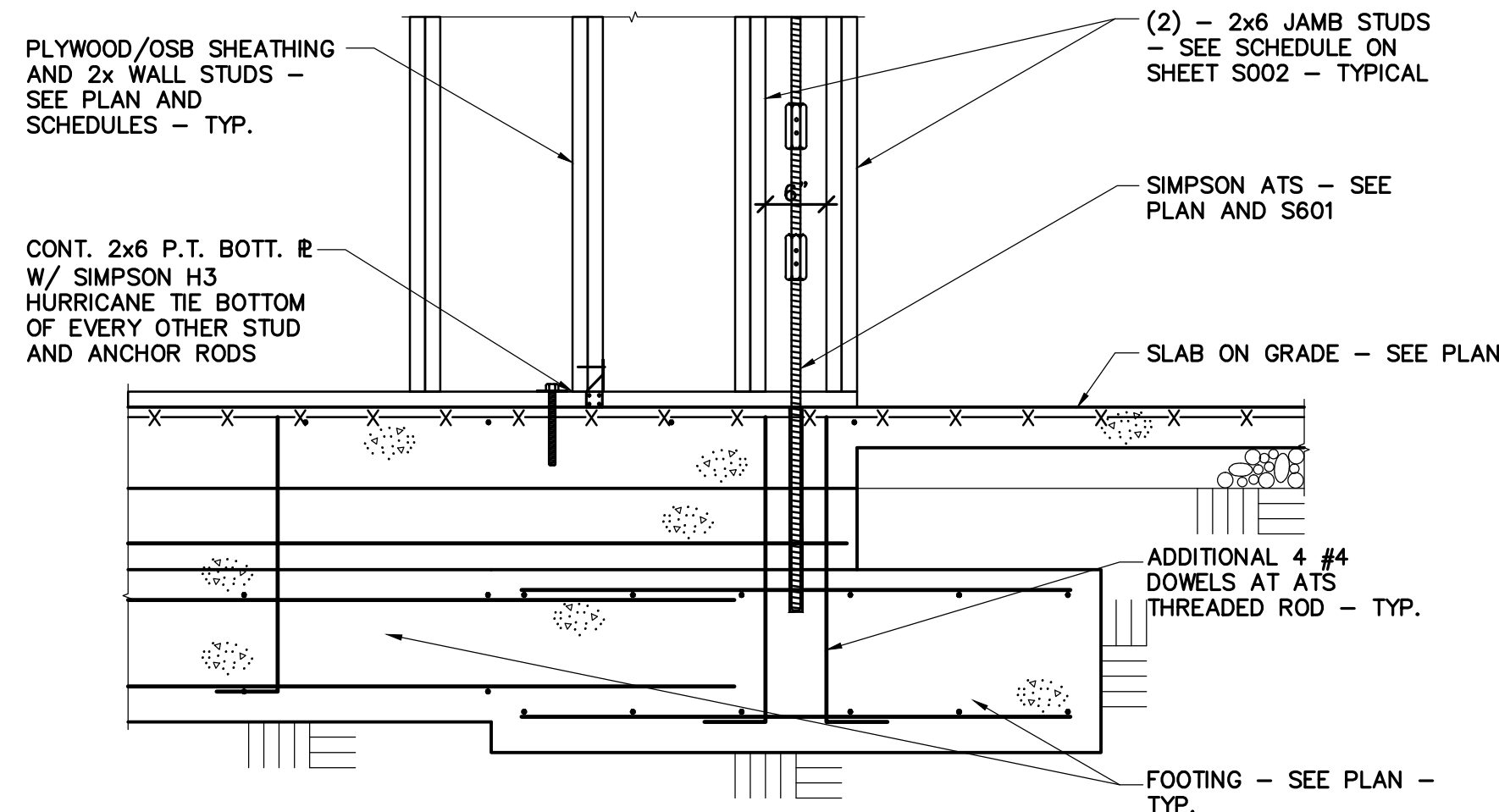
NOTE!
SEE ARCH. DWGS. FOR NOTES AND DETAILS NOT SHOWN - TYPICAL

SEE CIVIL/SITE DWGS. - TYPICAL

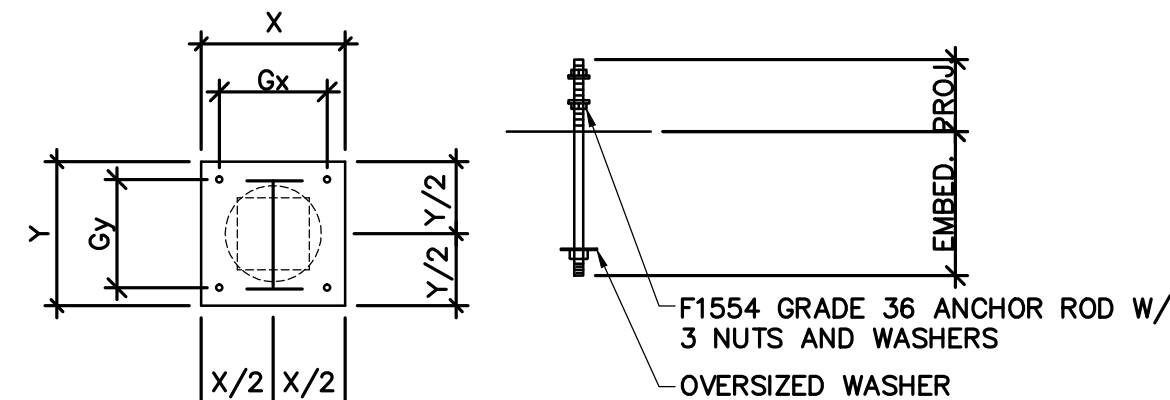
TRANSVERSE REINF. - SEE PLAN AND SCHED. - TYP.

LONGITUDINAL REINF. - SEE PLAN AND SCHED. - TYP.

4 SECTION AT EXTERIOR WALL
3/4" = 1'-0"



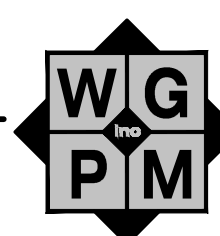
7 ELEVATION AT ATS
3/4" = 1'-0"



COLUMN	BASE PLATE			GAGE		ANCHOR ROD		GROUT
	THICK.	X	Y	Gx	Gy	DIA.	PROJ. EMBED.	
HSS 5x5	1"	12"	12"	9"	9"	3/4"	5"	2"
HSS 8x8	1 1/4"	16"	16"	12"	12"	1"	6"	2"

NOTE!
PROVIDE PJP GROOVE WELD (1/8" ROOT FACE) ALL AROUND FROM COLUMNS TO BASE R'S - TYPICAL

10 COL. BASE PL. & ANCH. ROD SCHED.
NO SCALE



WGPM, Inc.
Fright - Gibson - Patton
STRUCTURAL ENGINEERING
11220 Elm Lane, Suite 201
Charlotte, North Carolina 28277
704-542-7199 Fax: 704-542-7195
www.wgpmc.com
JOB NUMBER: 57-13



9/16/13