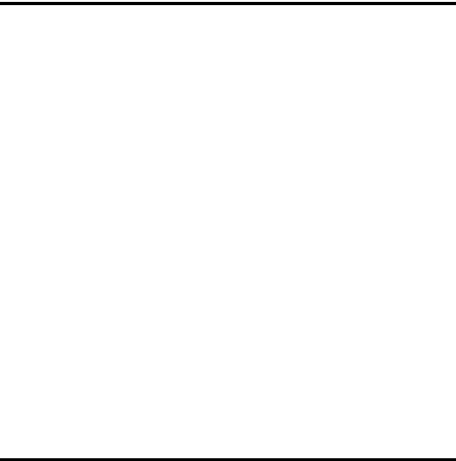


REVISIONS		
No.	Date	Description
1	11.01.13	Pool Equip., Ftgs & Rf Slope

Information contained on this drawing and in all digital files associated is authorized for use on the project named herein only and is the property of MISHRA ARCHITECTURE PLLC and may not be reproduced in any manner without express written or verbal permission from authorized individuals. Original drawing is 24"x36" and scales are as indicated. © 2011 MISHRA ARCHITECTURE PLLC



KEY PLAN

Southern Hospitality  
Services

Hampton Inn and  
Suites

5400 I-20 & Frontage Rd.  
Monroe, LA 71201

Drawing Title

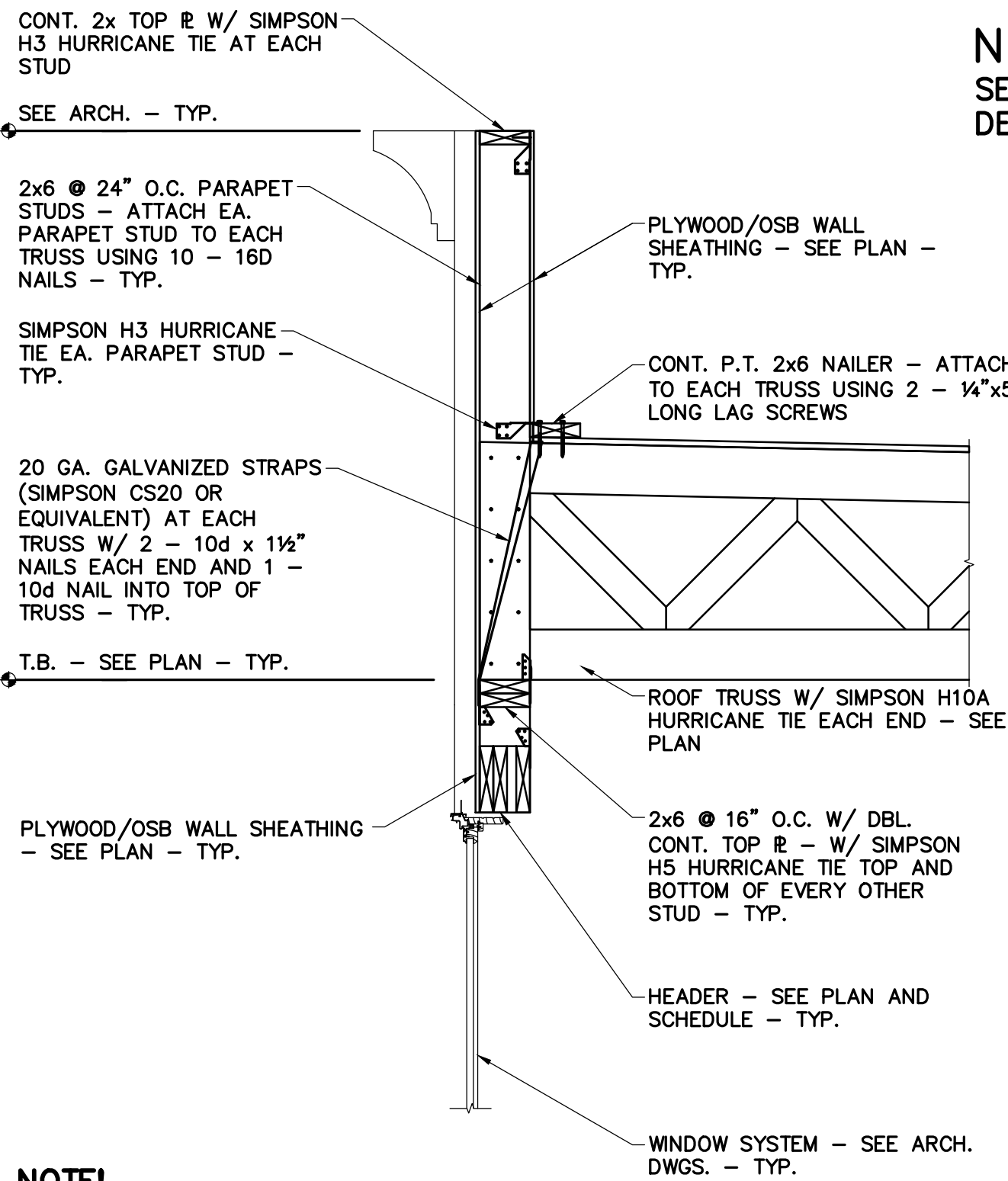
Roof Framing  
Sections and  
Details

Phase  
Construction Documents

Project No.	12-111	Sheet No.	S501
Prepared by	AB/LW		
Checked by	HLW		
Date	September 16, 2013		

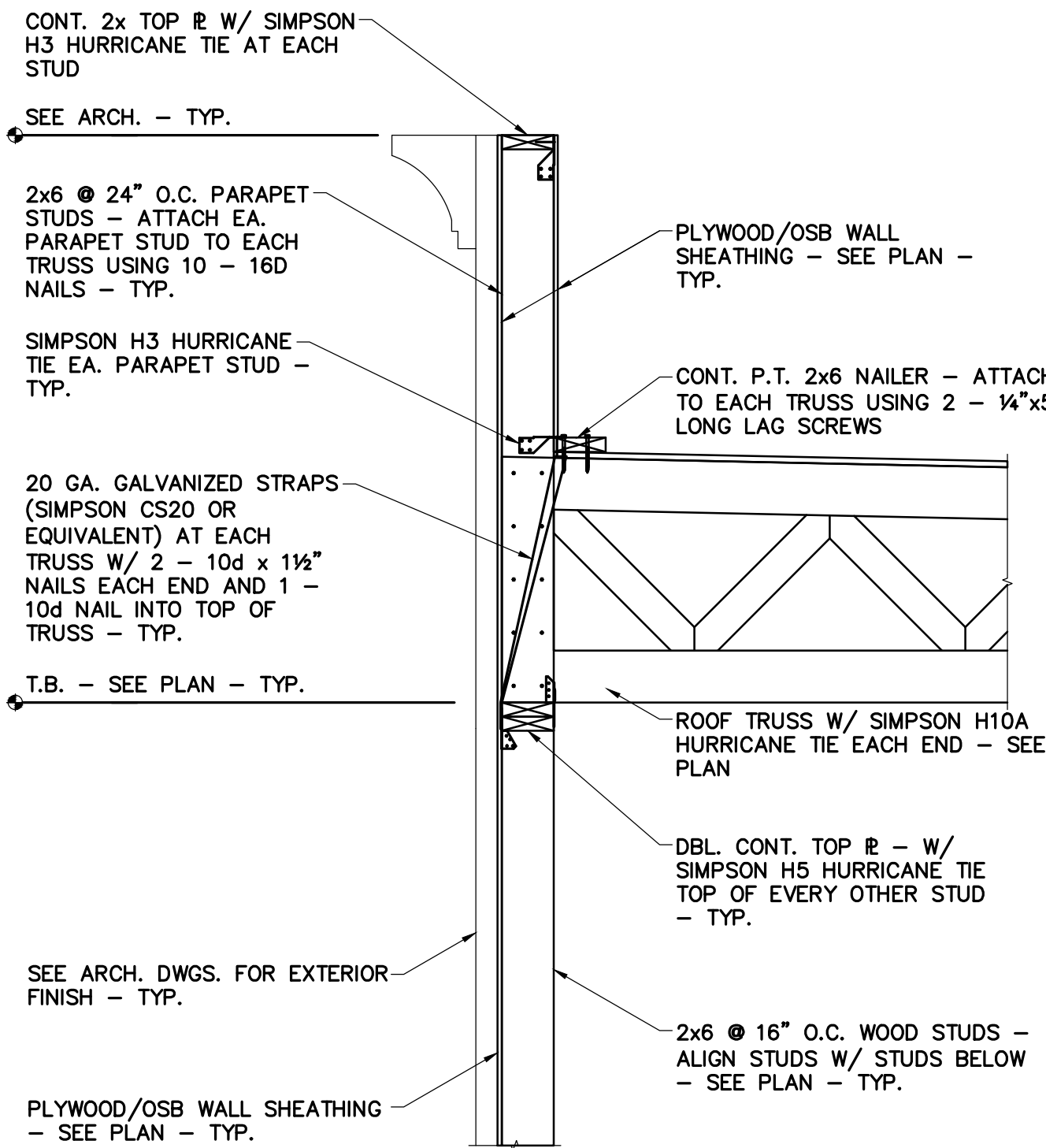
Released for

Hampton Inn and Suites



NOTE!  
SEE ARCH. DWGS. FOR NOTES  
AND DETAILS NOT SHOWN -  
TYPICAL

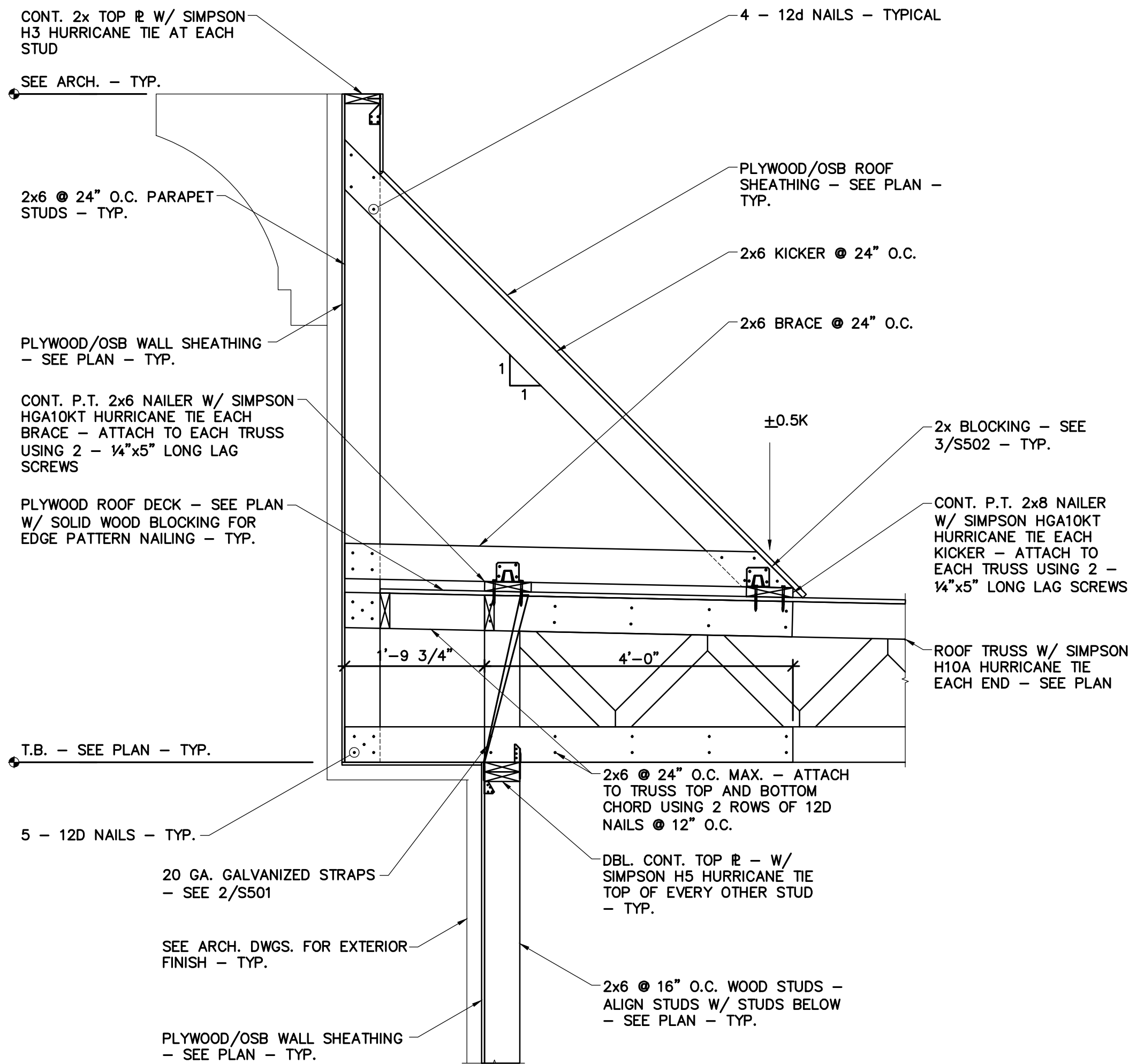
1 SECTION AT EXTERIOR WALL  
3/4" = 1'-0"



NOTE!  
SEE ARCH. DWGS. FOR NOTES  
AND DETAILS NOT SHOWN -  
TYPICAL

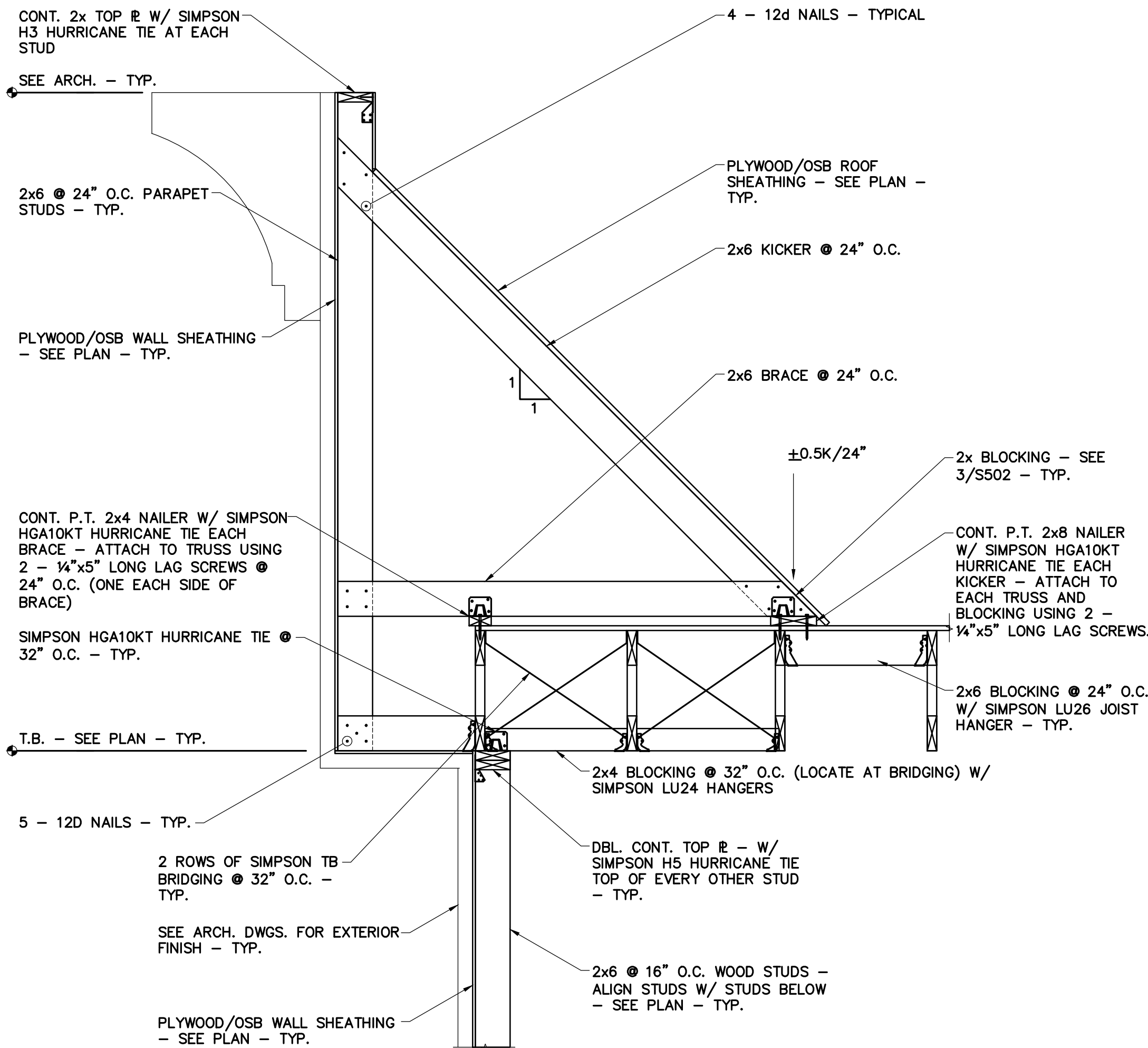
2 SECTION AT EXTERIOR WALL  
3/4" = 1'-0"

3 DID NOT USE  
3/4" = 1'-0"



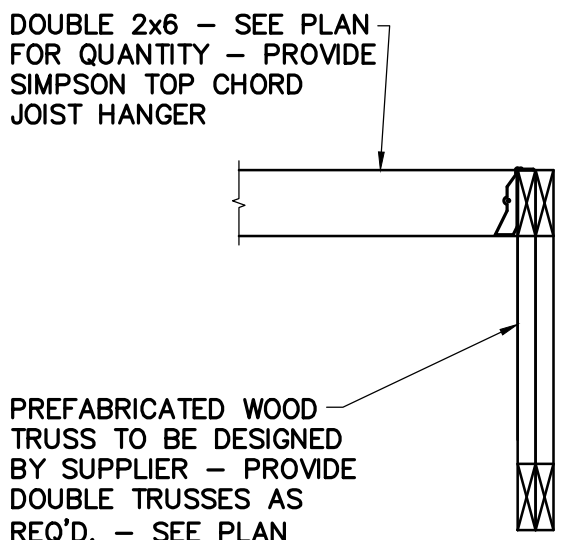
NOTE!  
SEE OTHER SECTIONS AND  
ARCH. DWGS. FOR NOTES AND  
DETAILS NOT SHOWN - TYPICAL

4 SECTION AT HIGH PARAPET  
3/4" = 1'-0"



NOTE!  
SEE OTHER SECTIONS AND  
ARCH. DWGS. FOR NOTES AND  
DETAILS NOT SHOWN - TYPICAL

5 SECTION AT HIGH PARAPET  
3/4" = 1'-0"



6 SECTION AT RTU  
3/4" = 1'-0"



WGPM, Inc.  
11220 Elm Lane, Suite 201  
Charlotte, North Carolina 28277  
704-542-7199 Fax: 704-542-7195  
www.wgpmc.com  
JOB NUMBER: 57-13

