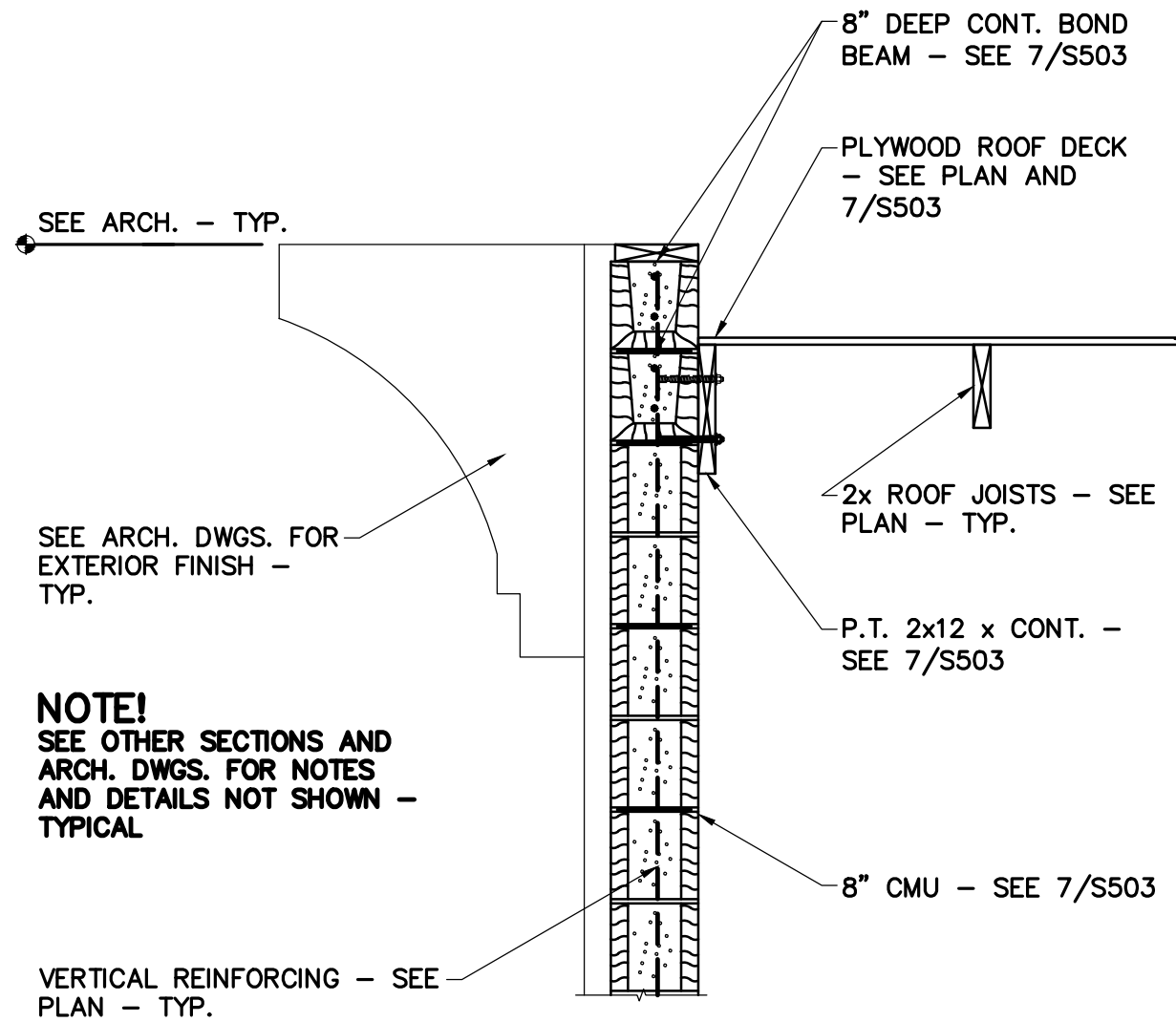


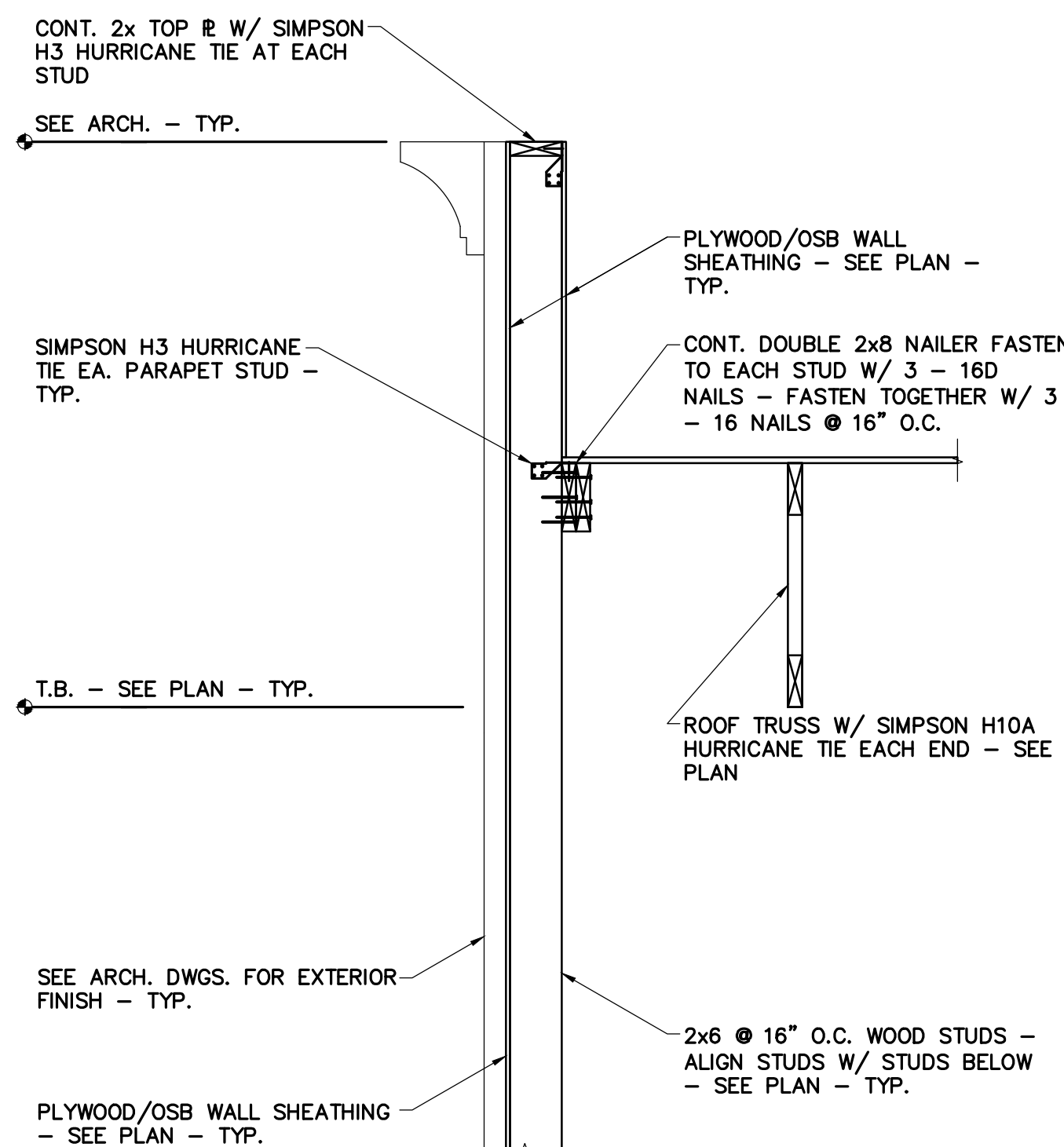
NOTE!
SEE ARCH. DWGS. FOR NOTES AND DETAILS NOT SHOWN - TYPICAL

1 ELEVATION STUDS AND TRUSSES
3/4" = 1'-0"



NOTE!
SEE OTHER SECTIONS AND ARCH. DWGS. FOR NOTES AND DETAILS NOT SHOWN - TYPICAL

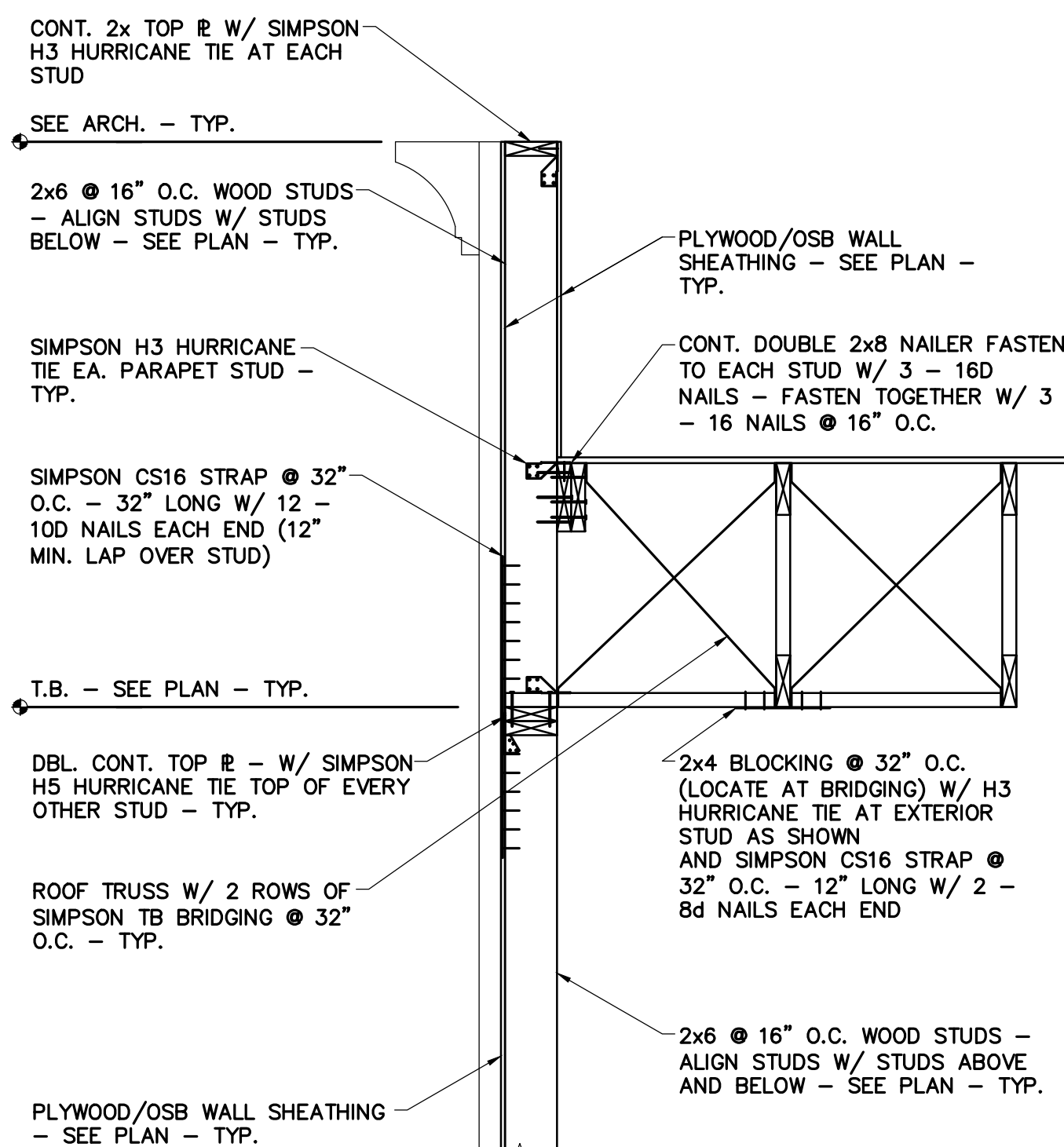
2 SECTION AT STAIR/ELEVATOR
3/4" = 1'-0"



NOTE!
SEE ARCH. DWGS. FOR NOTES AND DETAILS NOT SHOWN - TYPICAL

NOTE!
GENERAL CONTRACTORS OPTION TO USE SECTIONS 3/S503 OR 4/S503

3 SECTION AT EXTERIOR WALL
3/4" = 1'-0"

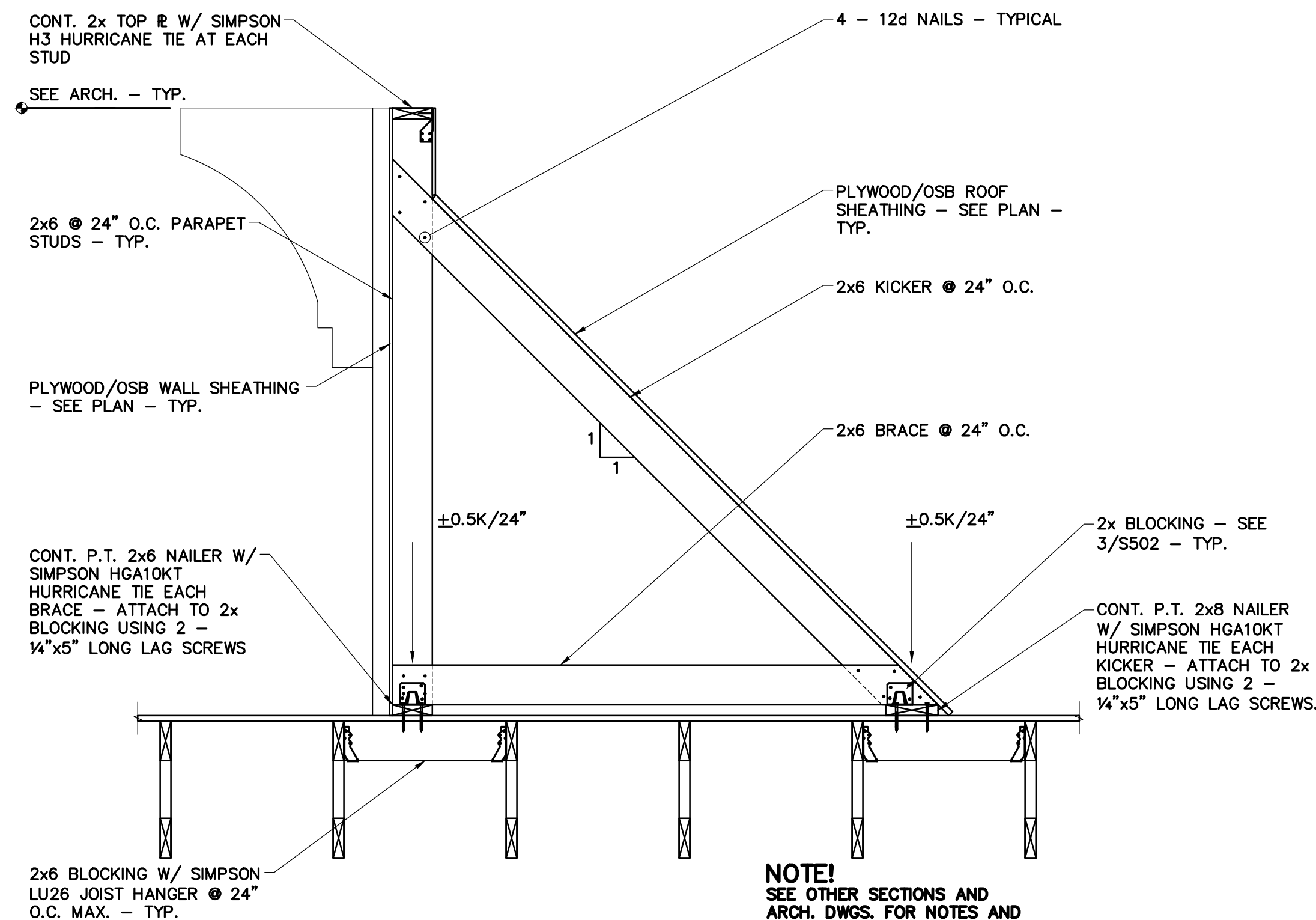


NOTE!
SEE ARCH. DWGS. FOR NOTES AND DETAILS NOT SHOWN - TYPICAL

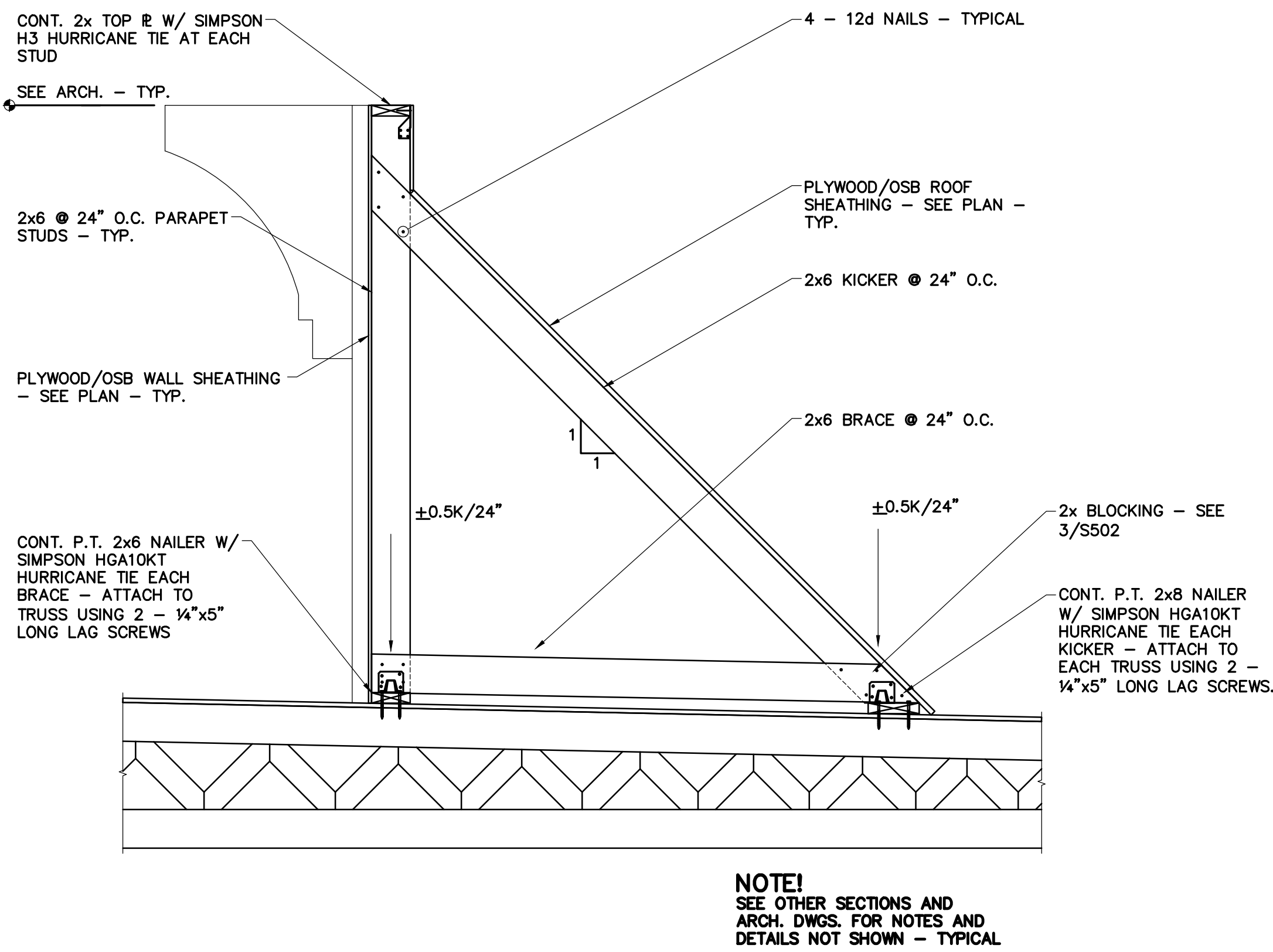
4 SECTION AT EXTERIOR WALL
3/4" = 1'-0"

REVISIONS		
No.	Date	Description
1	11.01.13	Pool Equip.,
		Ftgs & Rf Slope

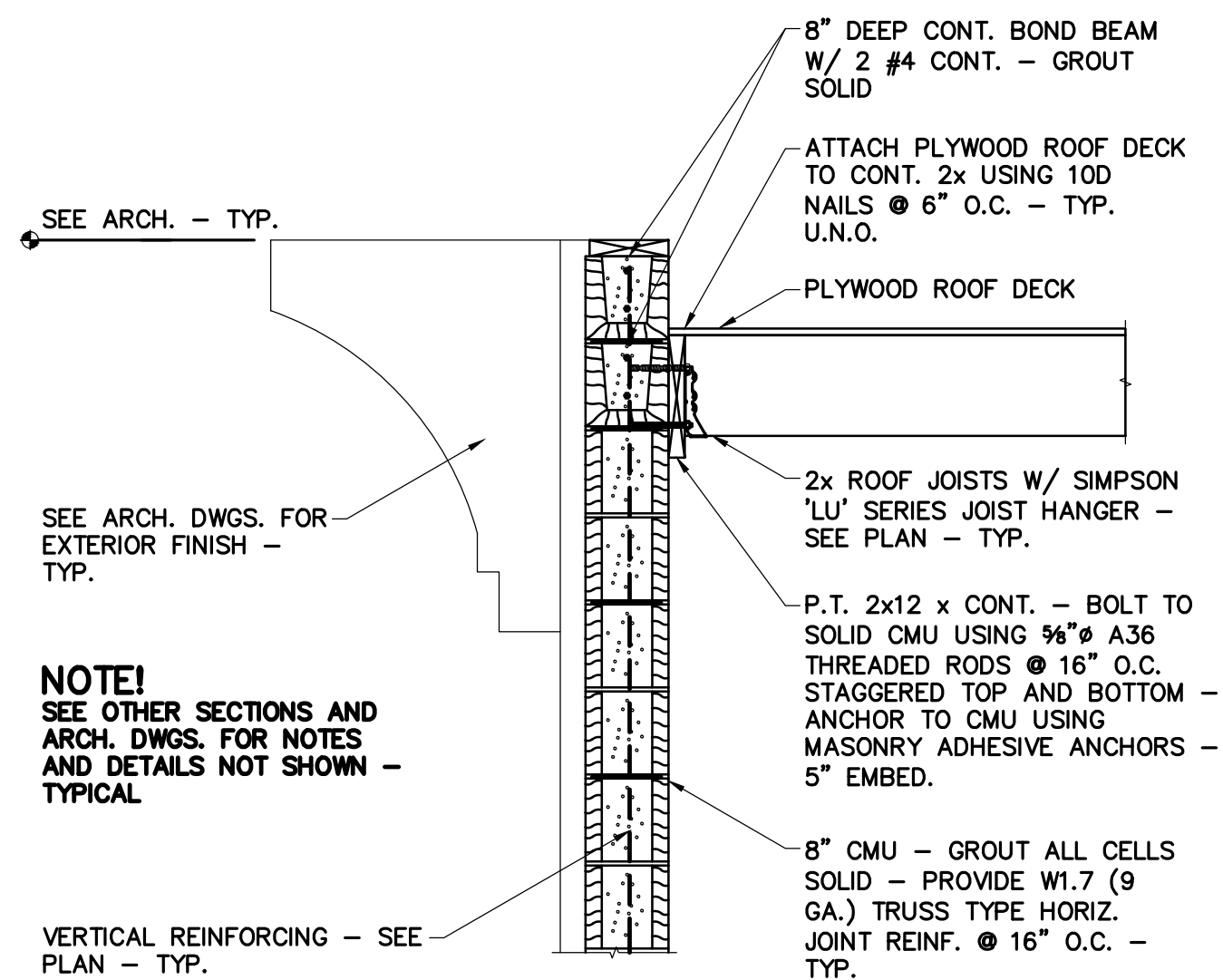
Information contained on this drawing and in all digital files associated is authorized for use on the project named herein only and is the property of MISHRA ARCHITECTURE PLLC and may not be reproduced in any manner without express written or verbal permission from authorized individuals. Original drawing is 24"x36" and scales are as indicated. © 2011 MISHRA ARCHITECTURE PLLC



5 SECTION AT PARAPET FRAMING
3/4" = 1'-0"



6 SECTION AT PARAPET FRAMING
3/4" = 1'-0"



7 SECTION AT STAIR/ELEVATOR
3/4" = 1'-0"

KEY PLAN

Southern Hospitality
Services

Hampton Inn and
Suites

5400 I-20 & Frontage Rd.
Monroe, LA 71201

Drawing Title

Roof Framing
Sections and
Details

Phase
Construction Documents

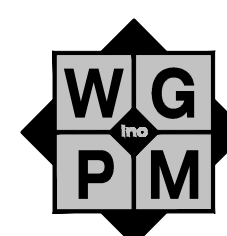
Project No. 12-111

Prepared by AB/LW

Checked by HLW

Date September 16, 2013

Released for



WGPM, Inc.
Fright - Gibbon - Patton
STRUCTURAL ENGINEERING
11220 Elm Lane, Suite 201
Charlotte, North Carolina 28277
704-542-7199 Fax: 704-542-7195
www.wgpmnc.com
JOB NUMBER: 57-13

