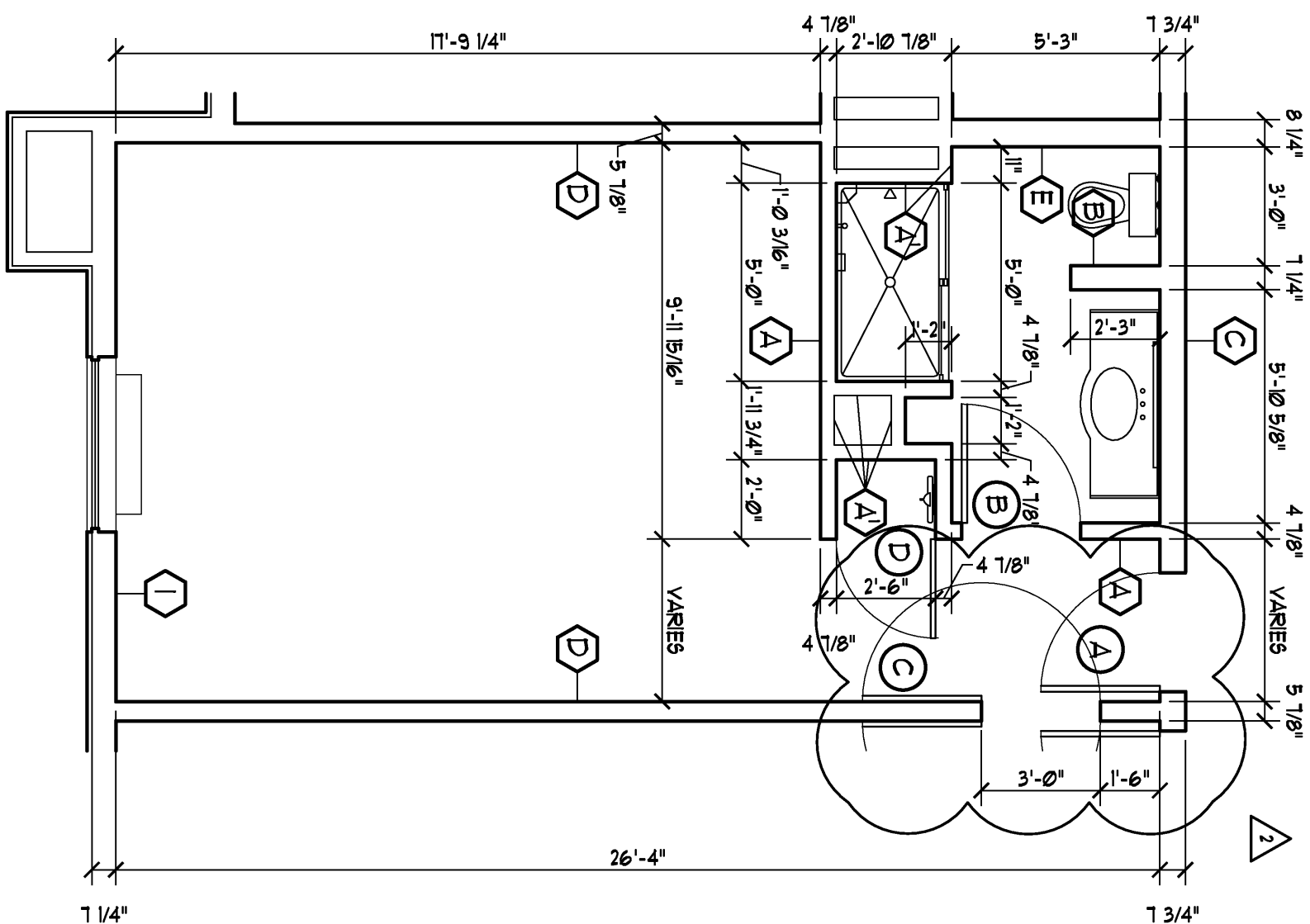
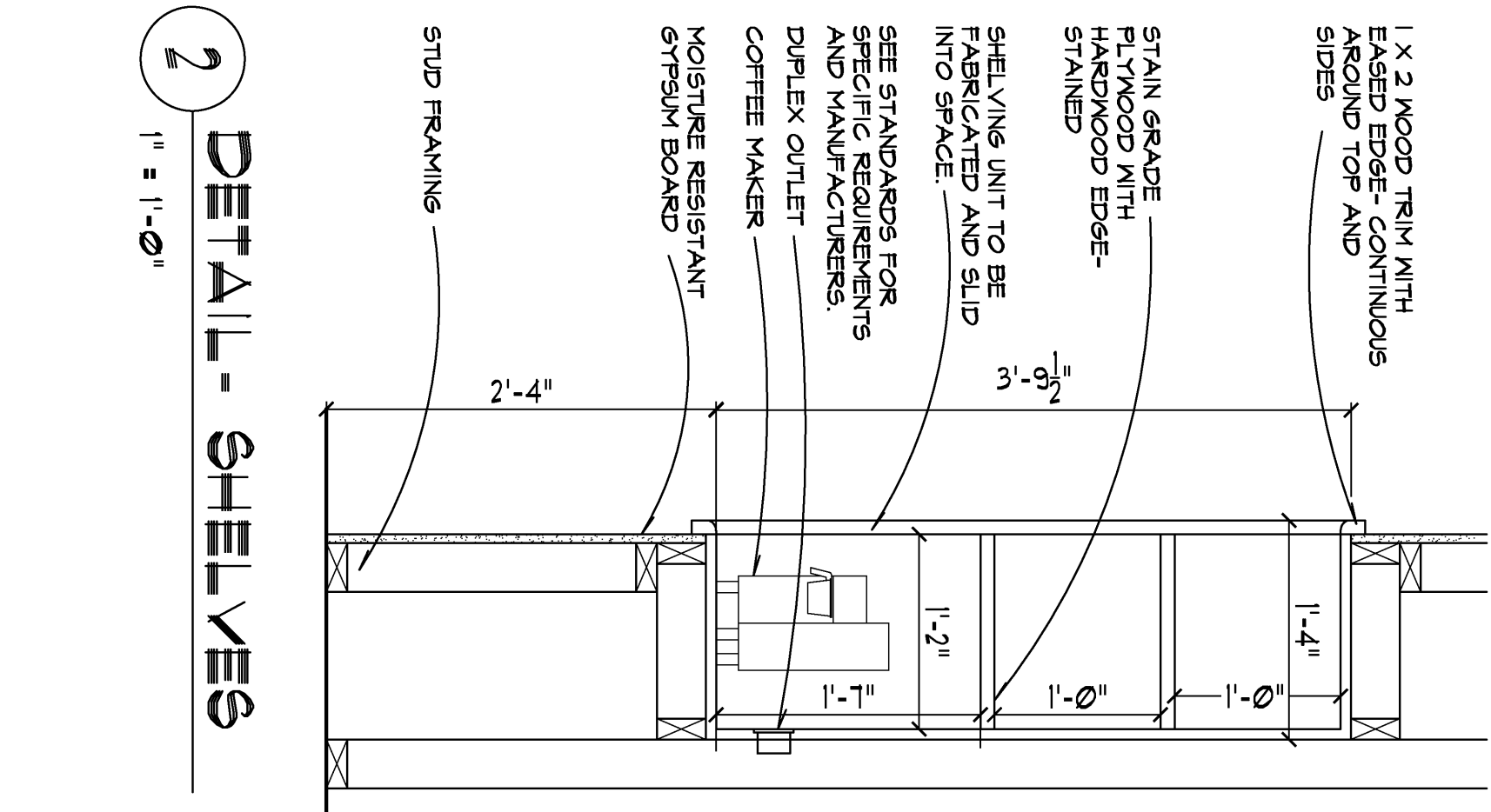


SCALE: 1/4" = 1'-0"

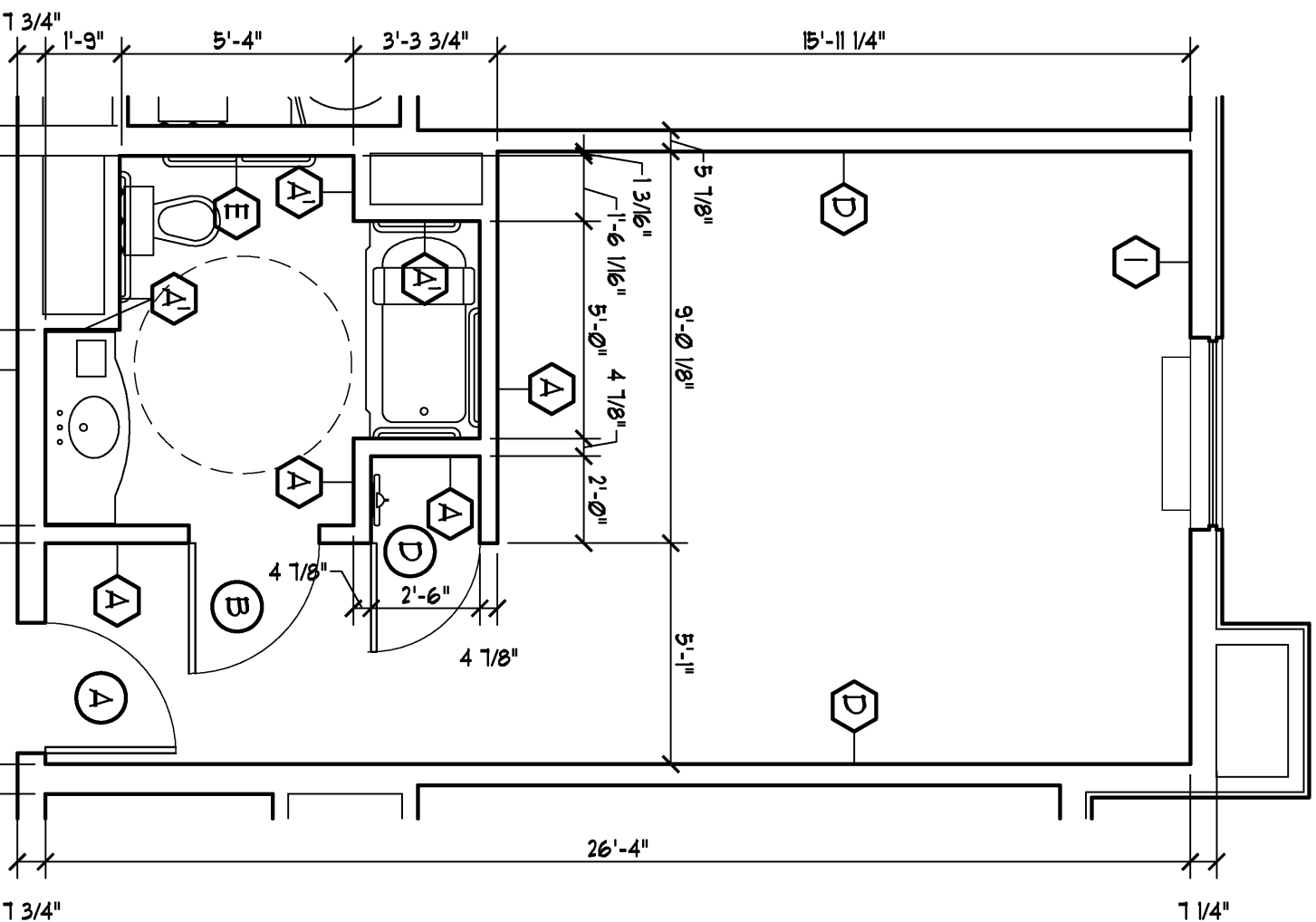


SCALE: 1/4" = 1'-0"

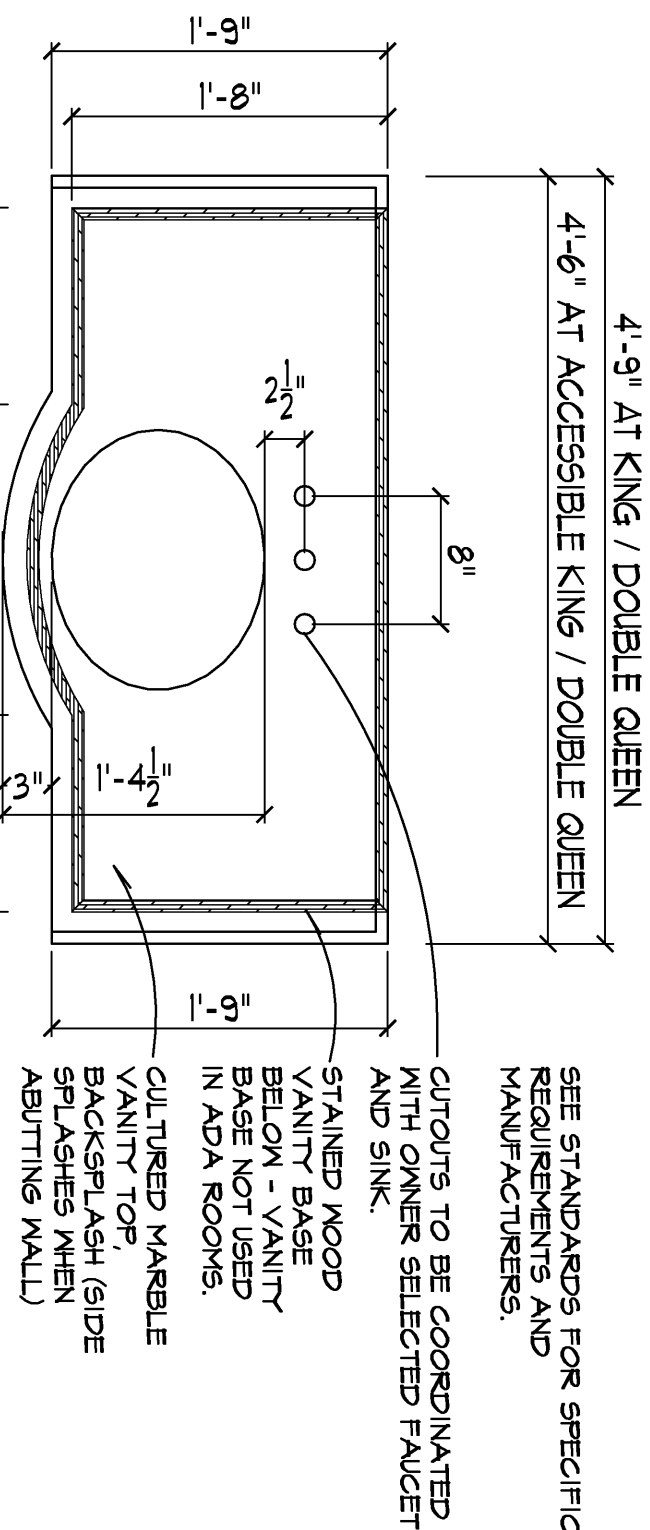
SCALE: 1/4" = 1'-0"



SCALE: 1/4" = 1'-0"


$$\begin{aligned} & \textcircled{\text{V}} \\ & \text{---} \\ & \text{=} \\ & \text{---} \\ & \text{= } \end{aligned}$$


二、



1. GRANITE MAY BE USED AS AN ALTERNATE FOR CULTURED MARBLE.
2. OPENINGS LESS THAN 4'-0" WIDE MUST HAVE MALL-TO-MALL TOP AND BASE LEGS MUST BE 3 MINIMUM AWAY FROM SIDE WALLS.
3. FREESTANDING TOPS MUST BE 4" MINIMUM AWAY FROM SIDE WALLS.

SEE STANDARDS FOR SPECIFIC REQUIREMENTS, AND MANUFACTURERS.

CULTURED MARE
VANITY TOP,
BACKSPLASH (S
SPLASHES WHEN
ABUTTING WALL.

date	comments
5-22-08 REVISED PER APPROACH #1 2-23-08 NO CHANGE	<div>  </div>
<div> <div>REVISIONS</div> <div> <div>Job: 2232-1107</div> <div>Date: 12-07-07</div> </div> </div>	