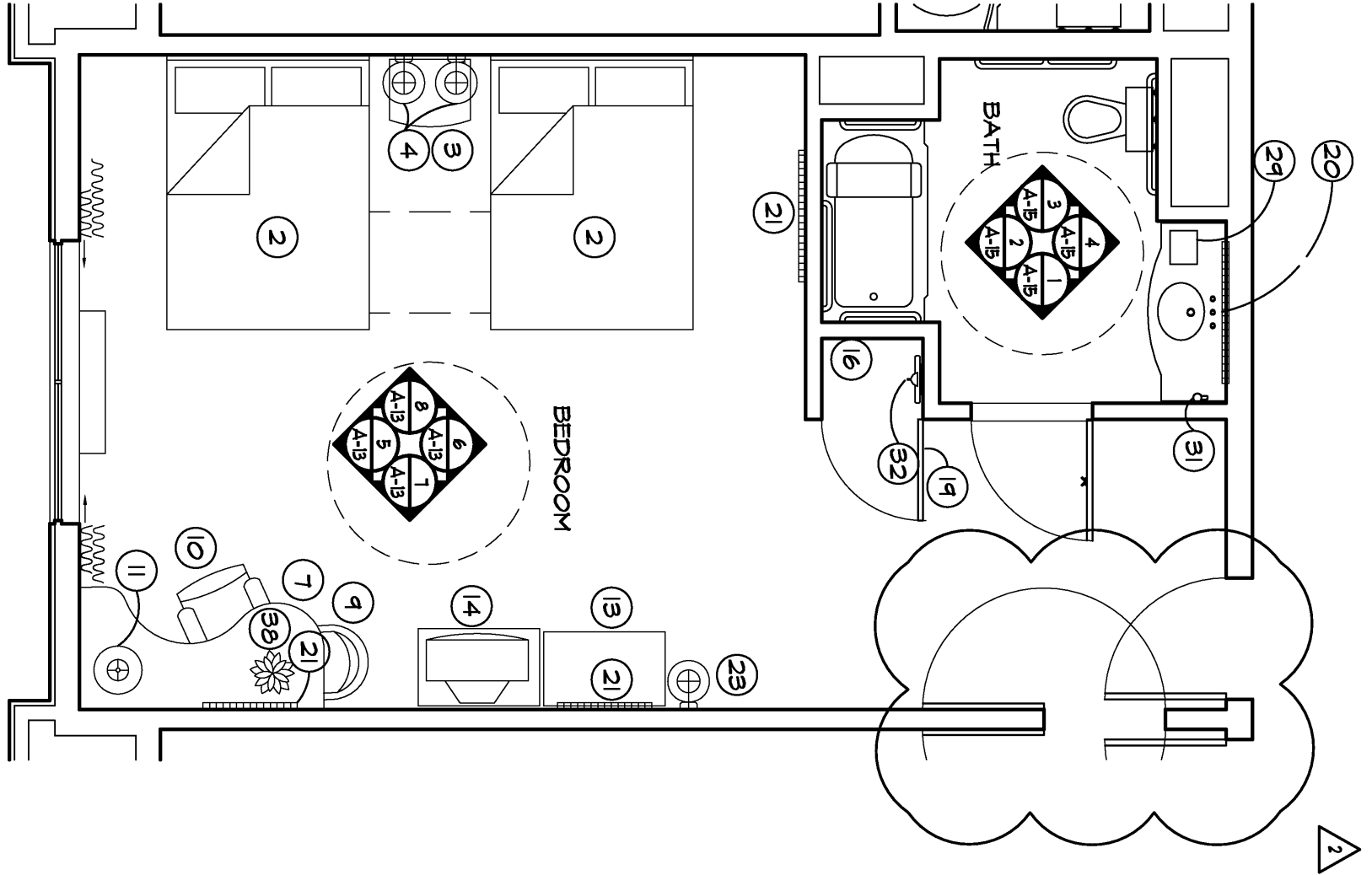
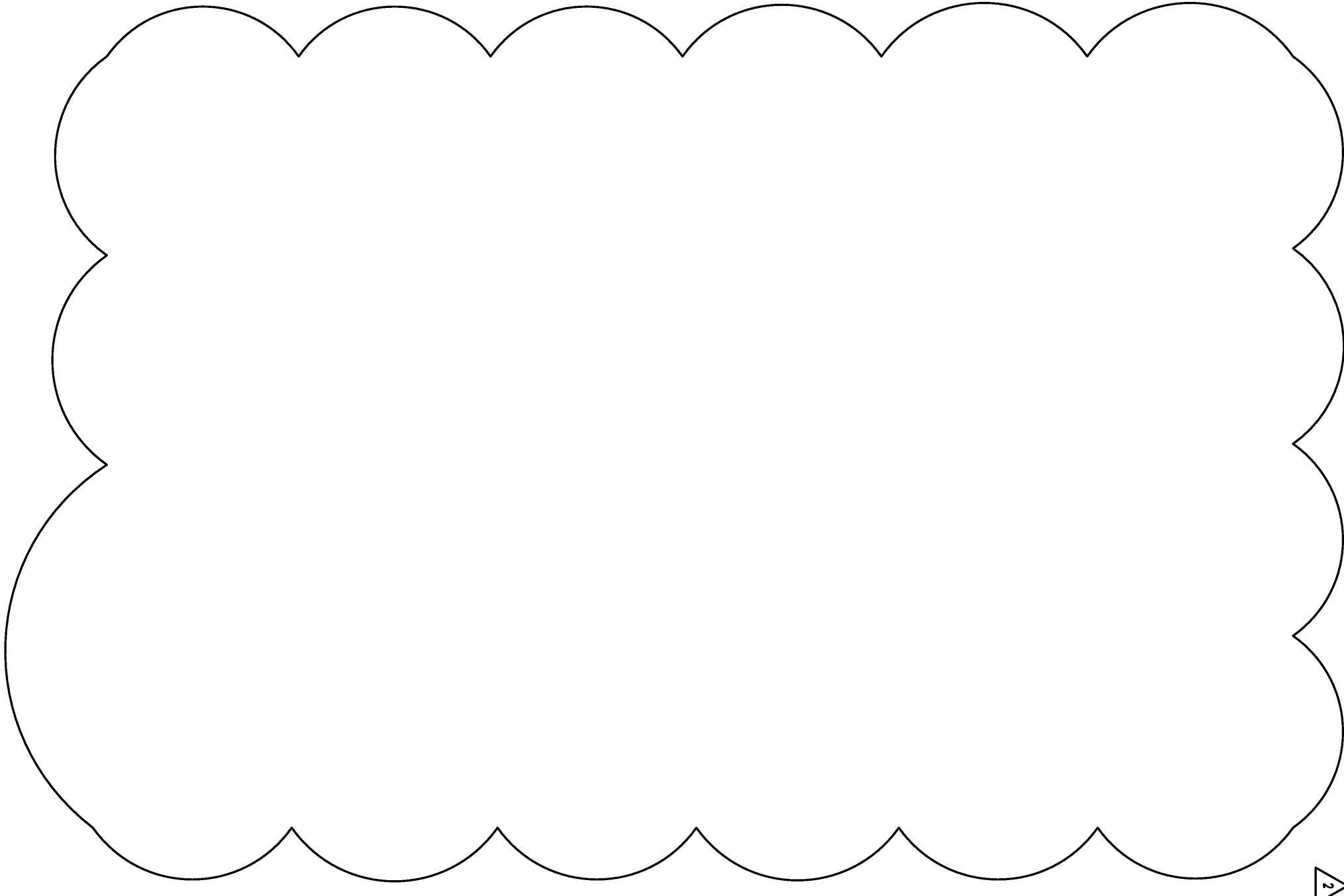
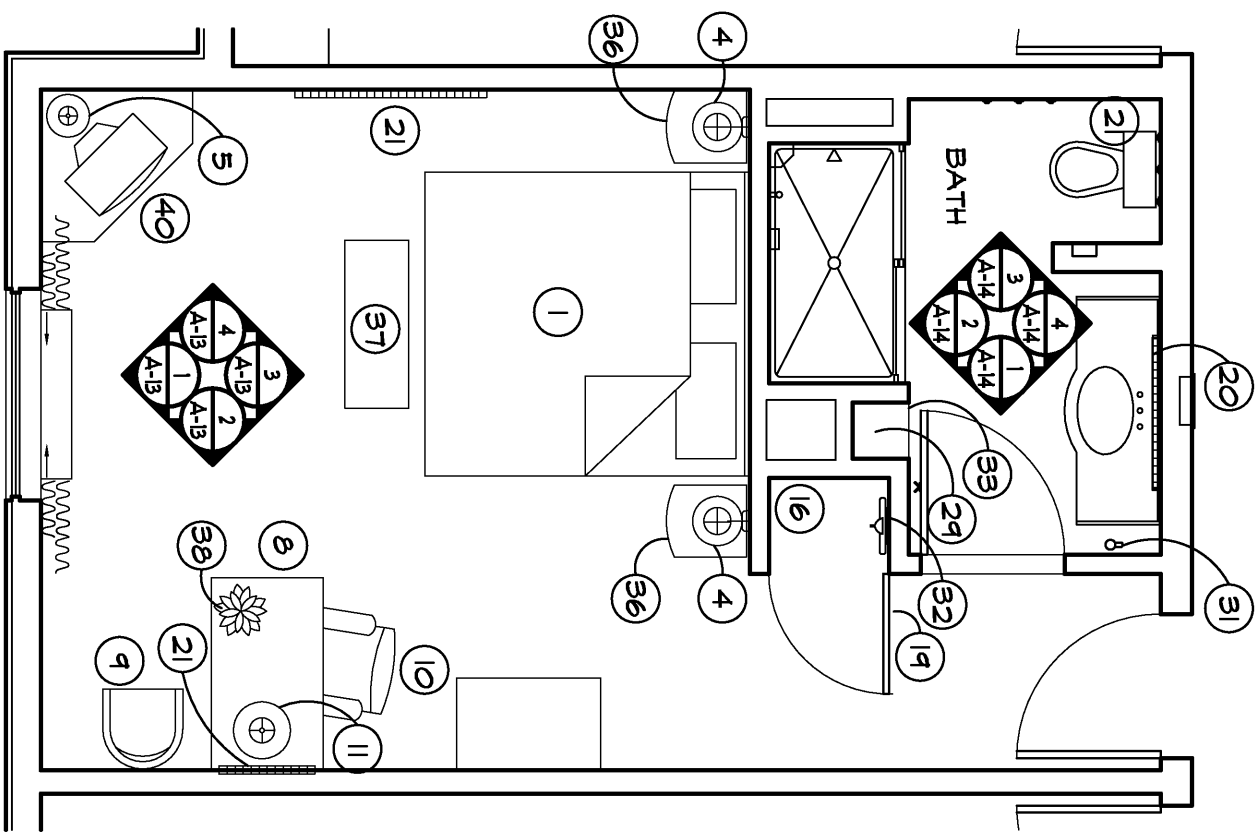


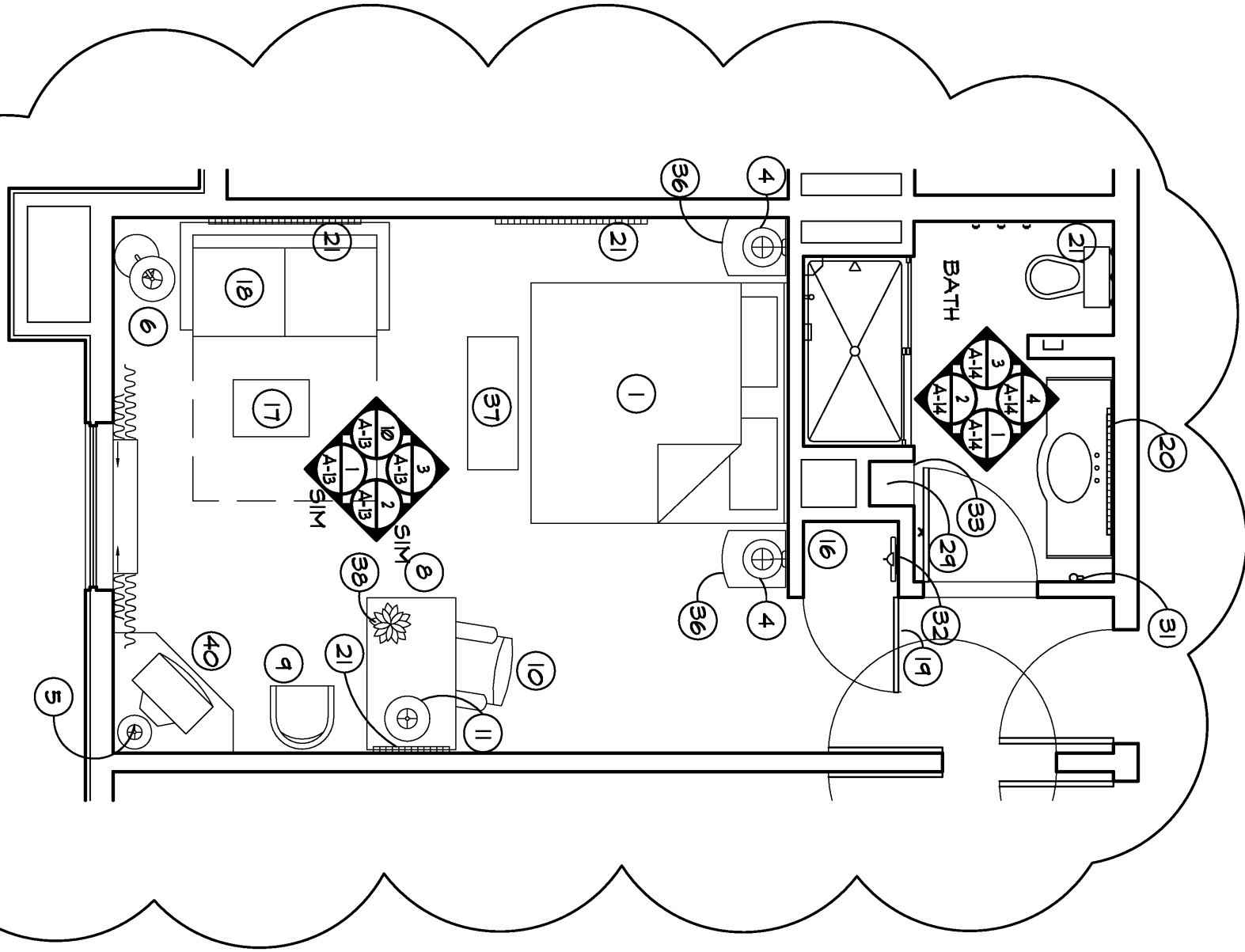
TYP. DOUBLE QUEEN
SCALE: 1/4" = 1'-0"



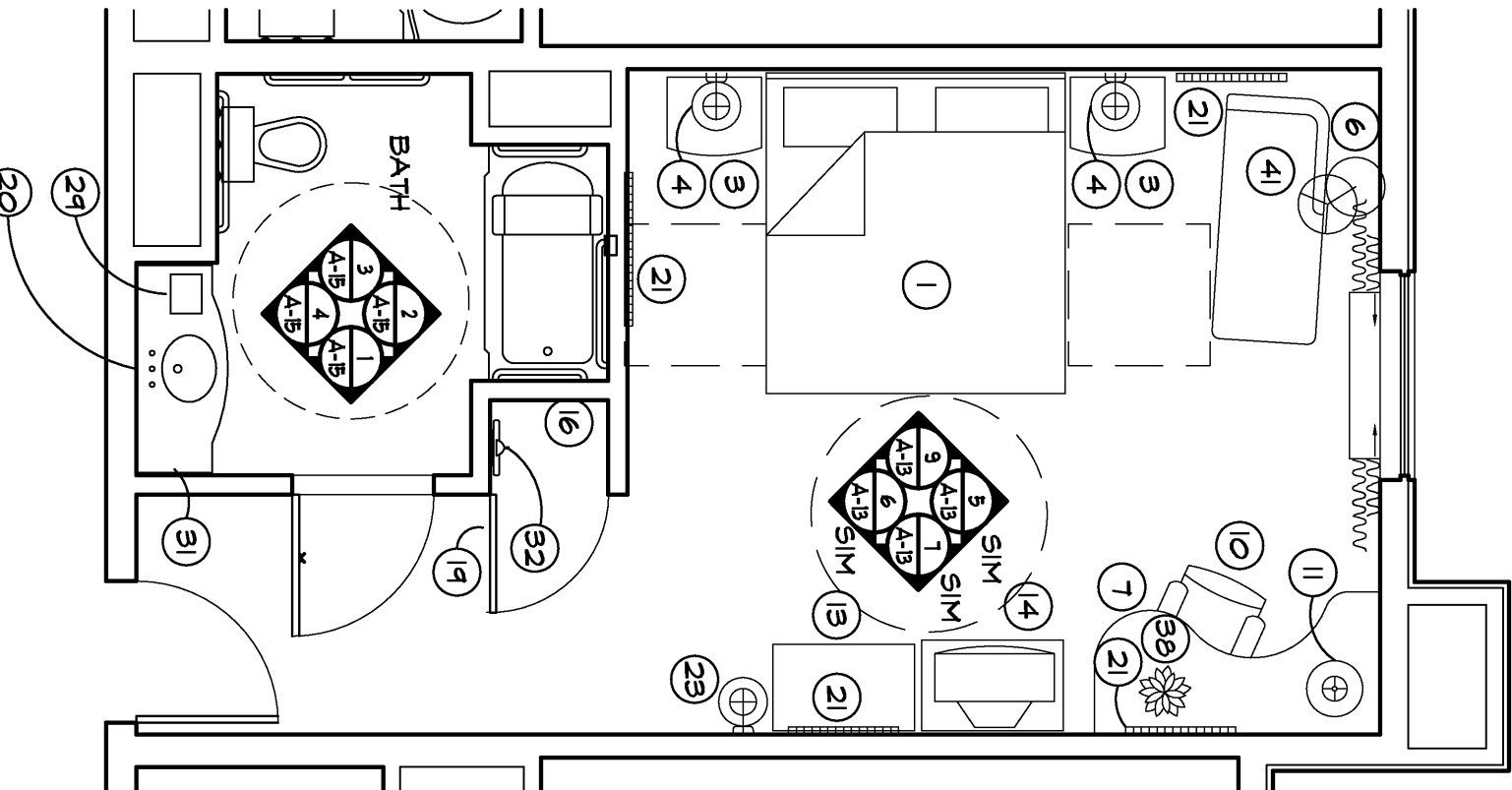
ACCESSIBLE DOUBLE QUEEN
SCALE: 1/4" = 1'-0"



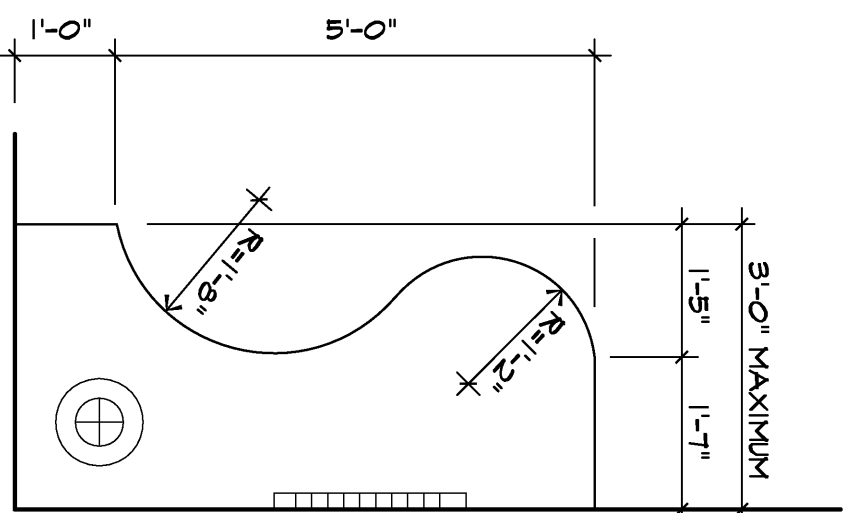
TYP. KING
SCALE: 1/4" = 1'-0"



DELUXE KING
SCALE: 1/4" = 1'-0"



ACCESSIBLE KING
SCALE: 1/4" = 1'-0"



CURVED DESK DTL.
SCALE: 1" = 1'-0"

FURNISHINGS LEGEND

- 1 KING BED - HEAD BOARD
- 2 QUEEN BED - HEAD BOARD
- 3 NIGHT STAND - 24"W
- 4 WALL MOUNTED LAMP - PLUG WIRED
- 5 LAMP AT BACHELOR'S CHEST
- 6 FLOOR LAMP - PLUG WIRED
- 7 CURVED WORK DESK - 72"W x 42"D x 30"H
- 8 EXECUTIVE DESK - 48"W x 28"D x 30"H
- 9 ACTIVITY CHAIR
- 0 5 STAR DESK CHAIR
- 11 DESK LAMP - PLUG WIRED
- 12 BACHELOR'S CHEST WITH 32" TV (STUDIOS ONLY)
- 13 LUGGAGE BENCH
- 14 BACHELOR'S CHEST WITH TV
- 15 LOUNGE CHAIR WITH OTTOMAN
- 16 LAMINATE COVERED SHELF - 15"D W/ 1" DIA. ROD
- 17 COFFEE TABLE
- 18 SOFA-SLEEPER
- 19 FULL LENGTH MIRROR - 18"W x 60"H
- 20 FRAMED MIRROR
- 21 ARTWORK
- 22 CEILING MOUNTED LIGHT
- 23 WALL MOUNTED LIGHT
- 24 NOT USED
- 25 END TABLE - 20"W x 24"H x 24"D
- 26 TABLE LAMP - PLUG WIRED
- 27 MET BAR WITH UNDERCOUNTER REFRIGERATOR
- 28 NOT USED
- 29 COFFEE MAKER
- 30 NOT USED
- 31 HAIR DRYER
- 32 IRON & IRONING BOARD
- 33 SHELVING UNIT (SEE DETAIL 2/A-11)
- 34 PREMIUM LOUNGE CHAIR WITH ARMS & OTTOMAN
- 35 NIGHT STAND
- 36 NIGHT STAND - 18"W
- 37 BENCH
- 38 12" W PLANT
- 39 30" W PLANT
- 40 CORNER BACHELOR'S CHEST W/ TV
- 41 CHAISE LOUNGE CHAIR
- 42 WHIRLPOOL TUB
- 43 ARMCHAIR

TV ARMCHAIR MAY BE SUBSTITUTED BUT MINIMUM WIDTH TO BE 36"

NOTE: MICROWAVE/REFRIGERATOR IN FREESTANDING CABINETS ARE NO LONGER ALLOWED TO BE ADDED. MET BARS WITH MICROWAVE/REFRIGERATOR ARE STILL REQUIRED IN SUITES.

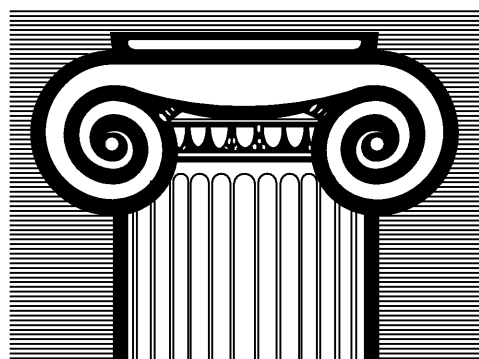
ELECTRICAL LEGEND

- ⊕ DUPLEX OUTLET
- ⊕ QUADPLEX OUTLET
- ▽ TELEPHONE OUTLET (W DATA PORT)
- TV OUTLET
- \$ SWITCH
- EXHAUST FAN
- ⊖ REMOTE THERMOSTAT

NOTE:
HEAD REQUIRED WITH
KID'S ROOMS
DESK AT 36" AFF

NOTES

1. AT ADJACENT ROOMS, ELECTRICAL OUTLET LOCATIONS, INCLUDING TV AND TELEPHONE OUTLETS, SHALL BE SHIFTED 6" FOR INSTALLATION. ELECTRICAL CORDS SHOULD BE HIDDEN FROM VIEW. BACK TO BACK OUTLETS ARE NOT ALLOWED.
2. LIGHT SWITCH AND GFI: OUTLETS CAN BE MOUNTED IN A COMMON 4X4 BOX WITH COVER PLATE. COORDINATE CLEARANCE WITH MIRROR.
3. HEIGHT OF ALL SWITCHES, OUTLETS, ETC., TO MEET A.D.A. REQUIREMENTS.
4. ELECTRICAL OUTLETS AT DESKS ARE TO BE COORDINATED WITH HAMPTON INN STANDARDS. DEPENDING ON FTEE PROVIDED, CERTAIN OUTLETS MAY NOT BE REQUIRED.
5. CEILING MOUNTED LIGHT FIXTURE AND FAN AT ALL GUEST ROOM BATHS TO BE SWITCHED SEPARATELY FROM LIGHT.
6. HEARING IMPAIRED ROOMS SHALL BE EQUIPPED WITH DETECTOR STROBES AND DOOR BUZZER STROBES AS REQUIRED BY ADA.



RICHARD F. STELDT
& ASSOCIATES, LTD.
ARCHITECTS
(282) 502-4500
N85 W16058 APPLETON AVE., MENOMONEE FALLS, WI 53051

Drawn: AAP
Approved:

REVISIONS

date	comments
12-07-07	REVISED PER APPROACH #

Job: 2232-1107
Date: 12-07-07

Hampton Inn.
98 UNITS FLOWOOD, MS