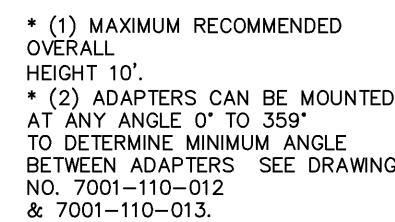


1. BOXES TO BE PRECAST (4000 PSI 28 DAY COMPRESSIVE STRENGTH) OR 8" SOLID BLOCK. 8" SOLID BLOCK MUST COMPLY WITH ASTM C55 AND THE WALLS ARE TO HAVE 3/4" MORTAR ON ALL INTERIOR AND EXTERIOR SURFACES. CONTRACTOR MAY USE POURED IN PLACE INLET IN COMPLIANCE WITH ALL APPLICABLE CODES.
2. WIDTHS AND DEPTHS OF CATCH BASINS DETERMINED BY PIPE SIZES AND ANGLES AND CASTINGS TO BE USED. MAXIMUM HEIGHTS TO BE 8" UNLESS APPROVED BY ENGINEER.
3. PROVIDE HEAVY DUTY GRATES FOR TRAFFIC AREAS.
4. RISERS MAY BE USED TO GET ADDITIONAL SEPARATION BETWEEN THE TOP OF THE INLET AND THE PAVEMENT STRUCTURE.
5. CONCRETE PIPE TO BE CLASS III.
6. CONTRACTOR TO INSURE THAT WATER IS NOT ALLOWED TO POND BEHIND THE INLET BOXES DURING RAIN.
7. ON PRECAST CONCRETE BOXES THE LIFT HOLES ON EACH SECTION TO BE SEALED WATERTIGHT WITH NONSHRINK GROUT INSIDE AND OUT.
8. STEPS REQ'D. IN STRUCTURES GREATER THAN 48" IN DEPTH. FIRST STEP TO BE 18" FROM THE BOTTOM WITH 12" SPACING BETWEEN REMAINING STEPS.



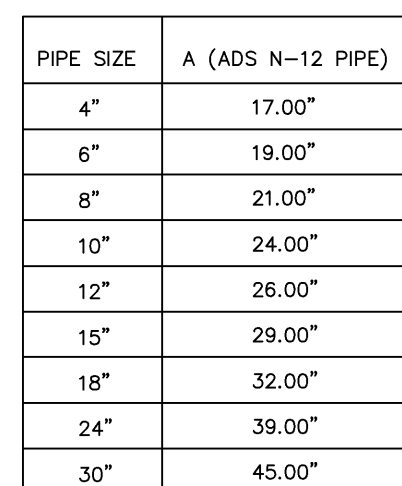
TRENCH GRATE DETAIL

FRAME: C.L. DEWS CATALOG NUMBER FS,
DESC. STEEL TRENCH FRAME
GRATE: C.L. DEWS CATALOG NUMBER DF-1424,
DESC. TRENCH GRATING (H-20 RATED)
FRAME AND GRATE TO BE INSTALLED ACCORDING
TO MANUFACTURER'S RECOMMENDATIONS

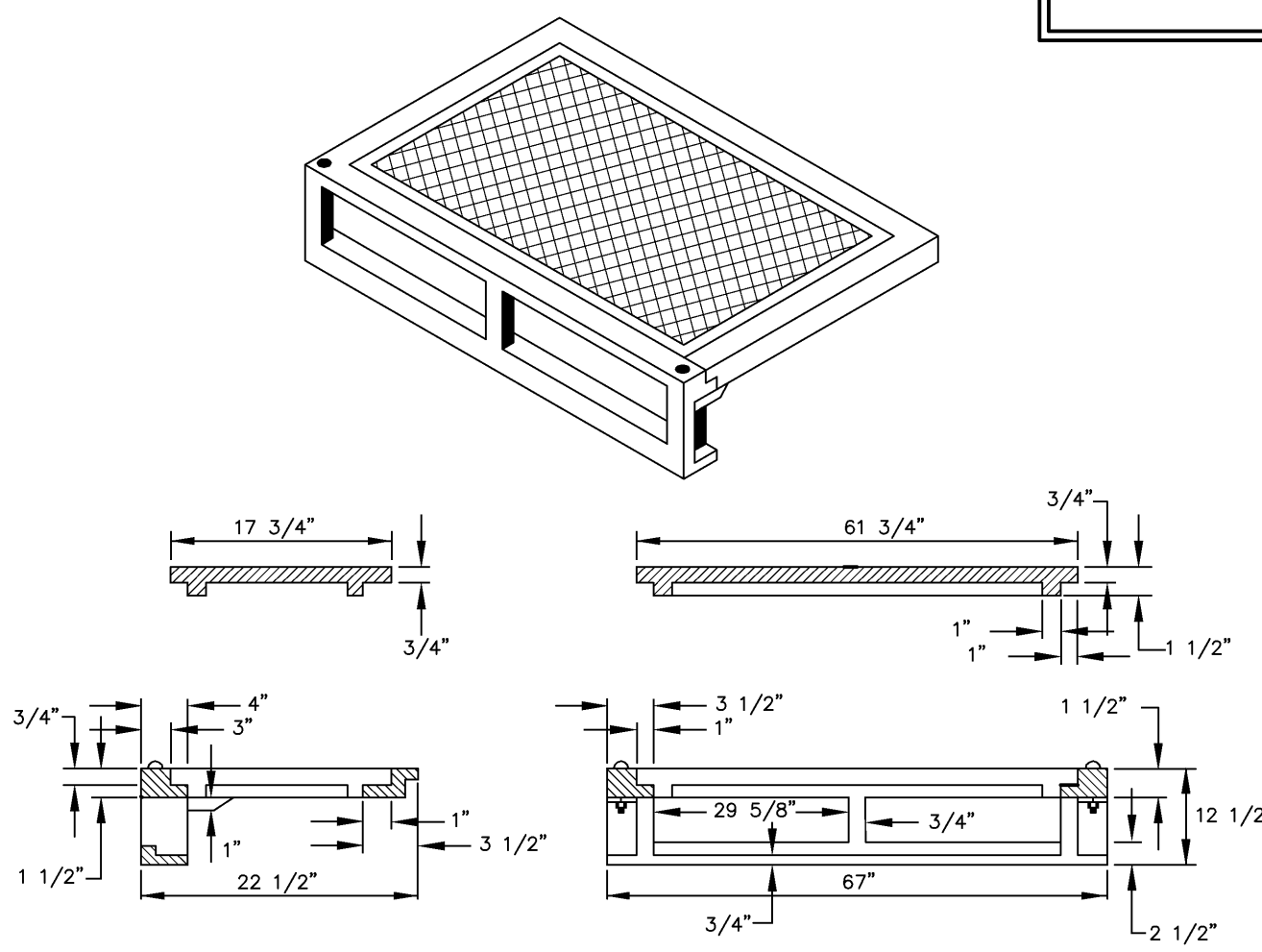


GENERAL NOTES:

1. STORM SEWER CONSTRUCTION TO COMPLY WITH THE LATEST EDITION OF THE MISSISSIPPI STANDARD SPECIFICATIONS FOR ROAD AND BRIDGE CONSTRUCTION.
2. CONTRACTOR TO COMPLY WITH ADS INSTALLATION SPECIFICATIONS FOR NYLOPLAST STRUCTURES.



2'x3' ADS NYLOPLAST GRATE INLET INSTALLATION DETAILS



STANDARD CURB INLET CASTING

(CONTRACTOR MAY USE PRECAST TOPS IN COMPLIANCE WITH MDOT STANDARDS)