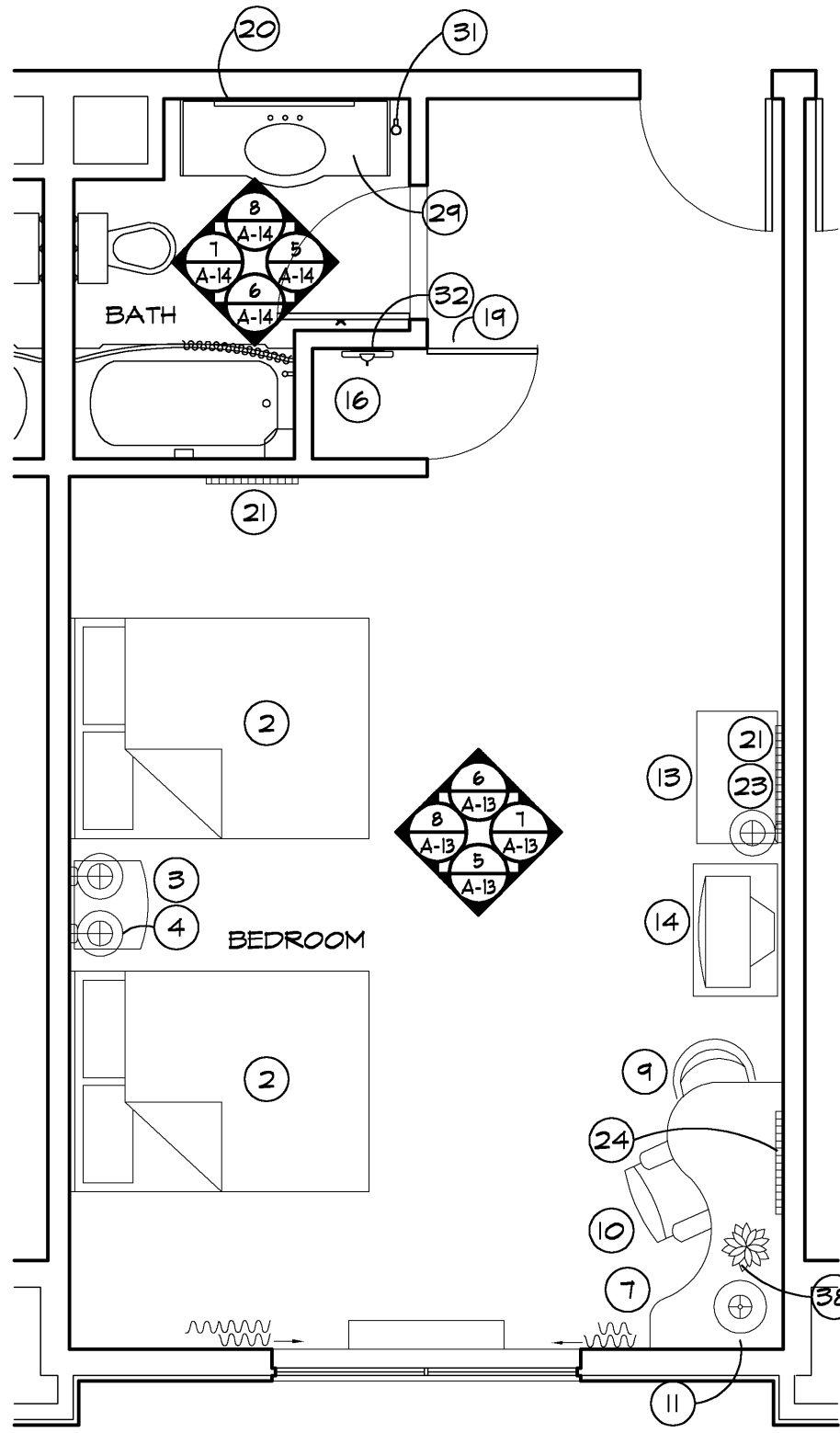


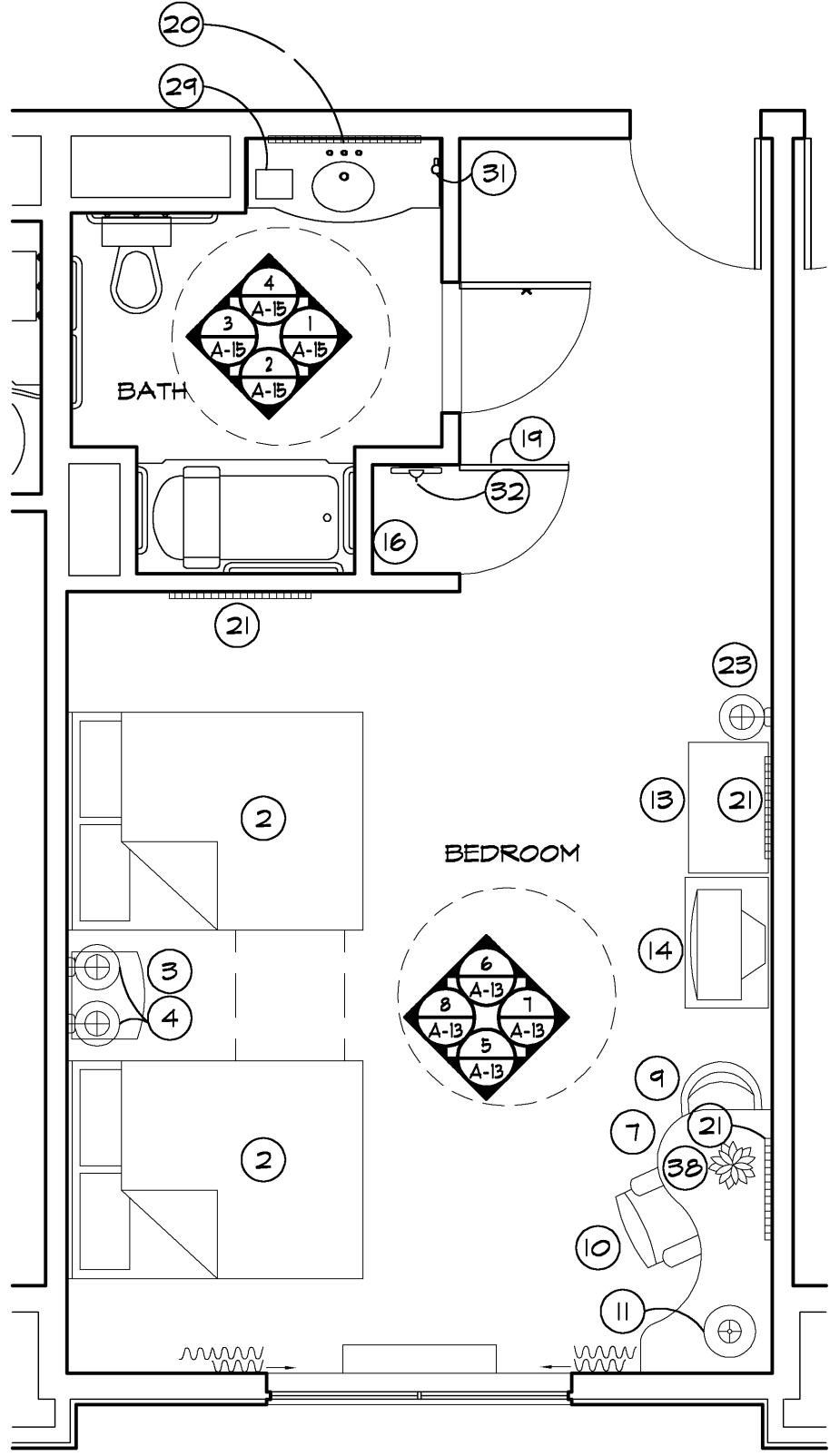
TYP. DOUBLE QUEEN

SCALE: 1/4" = 1'-0"



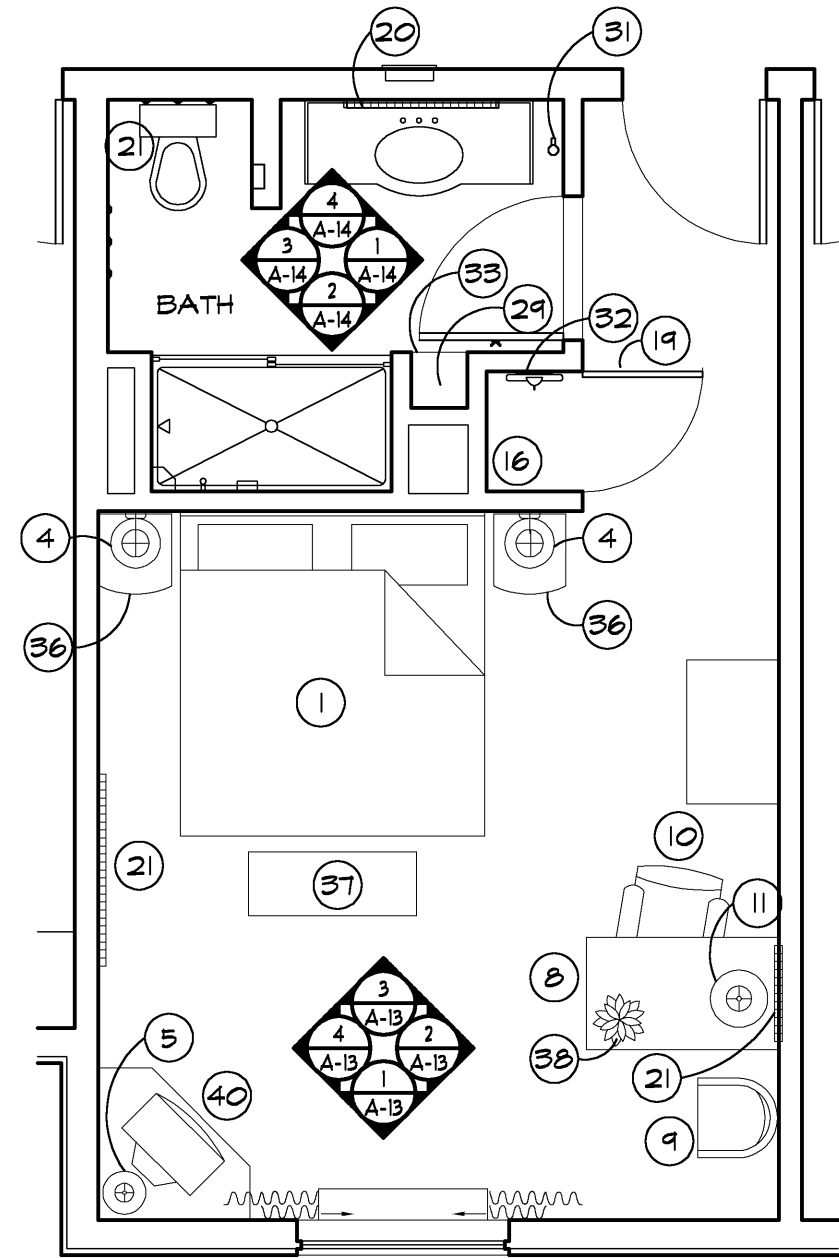
DELUXE DOUBLE QUEEN

SCALE: 1/4" = 1'-0"



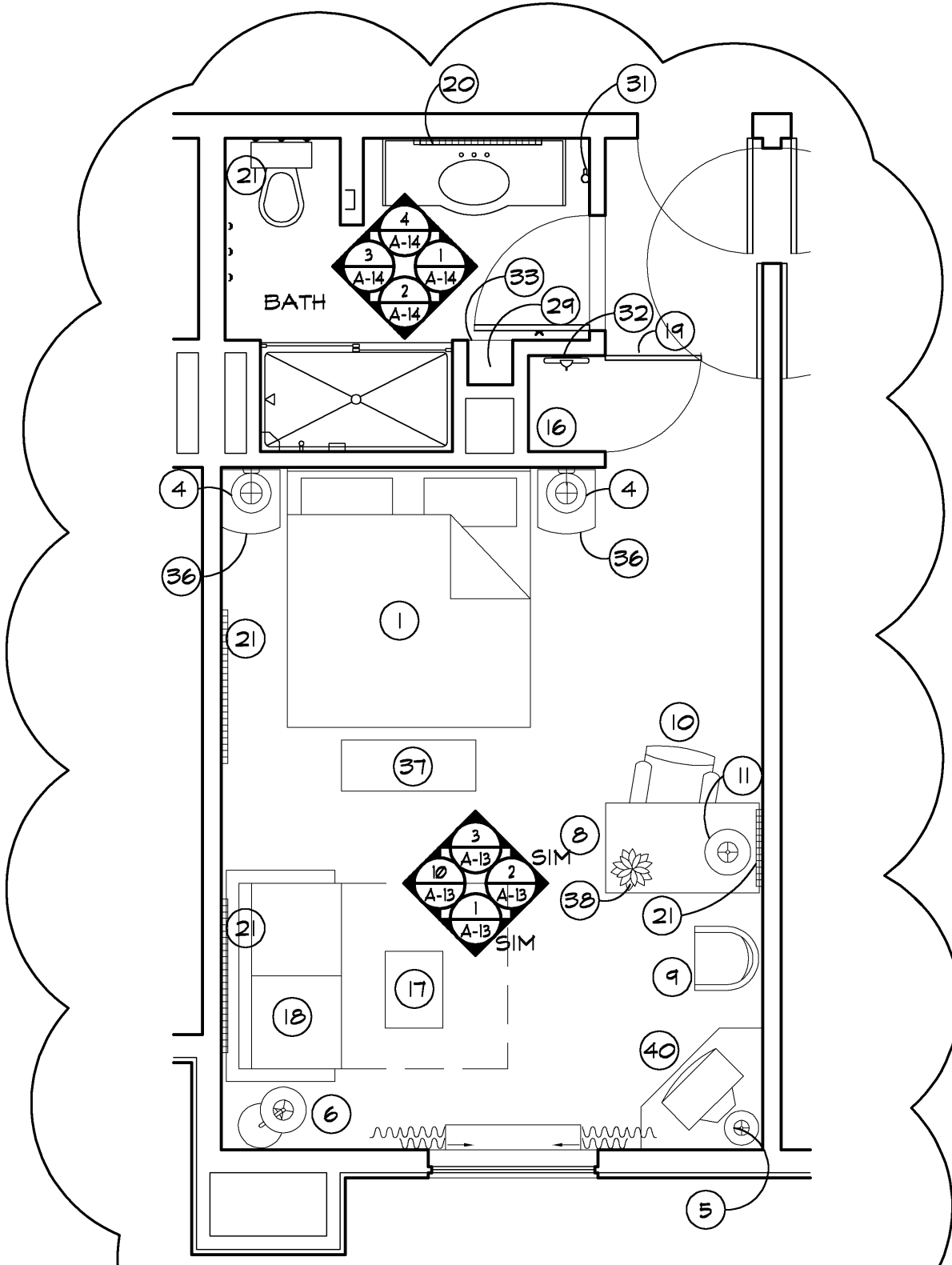
ACCESSIBLE DOUBLE QUEEN

SCALE: 1/4" = 1'-0"



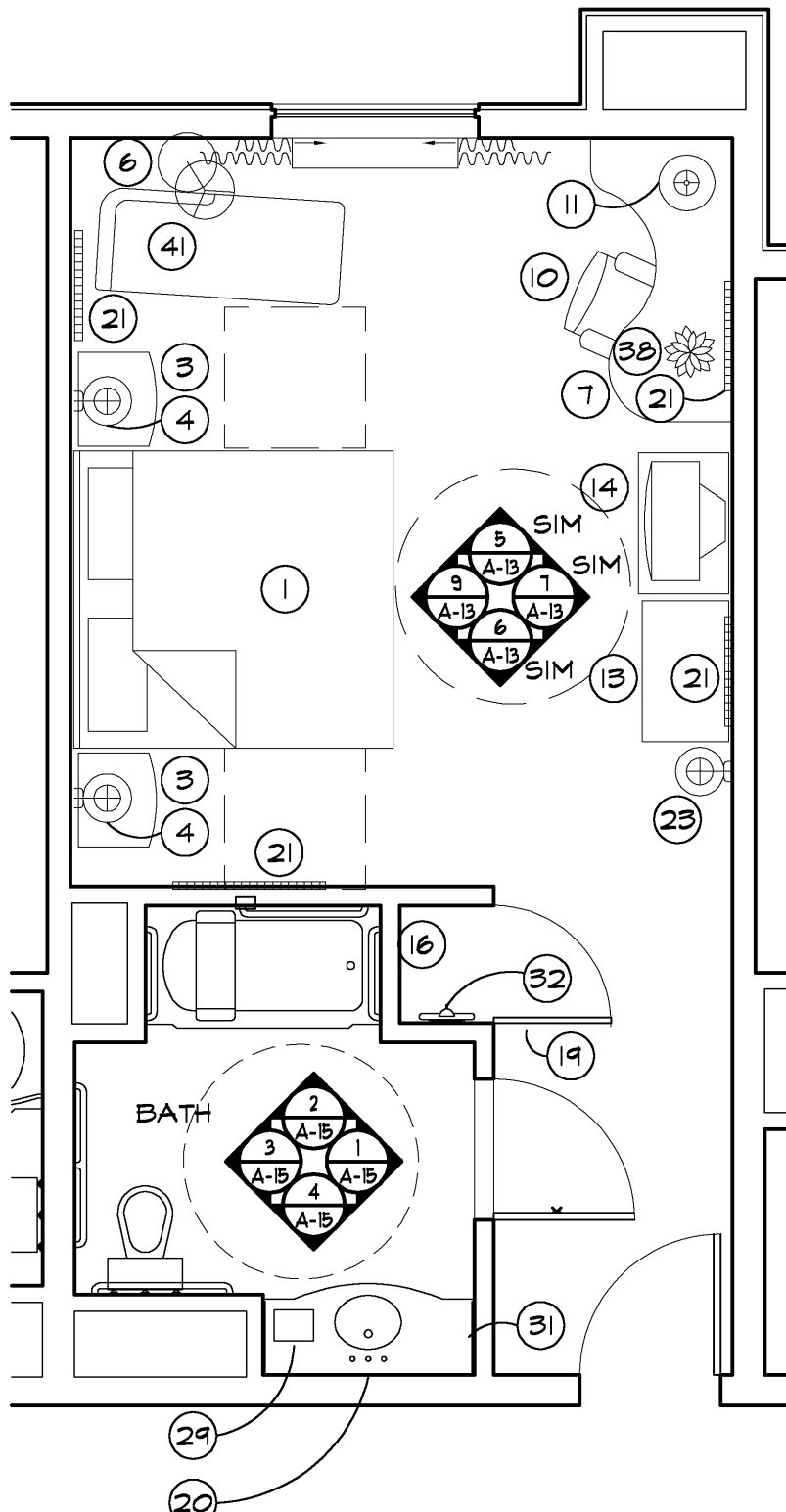
TYP. KING

SCALE: 1/4" = 1'-0"



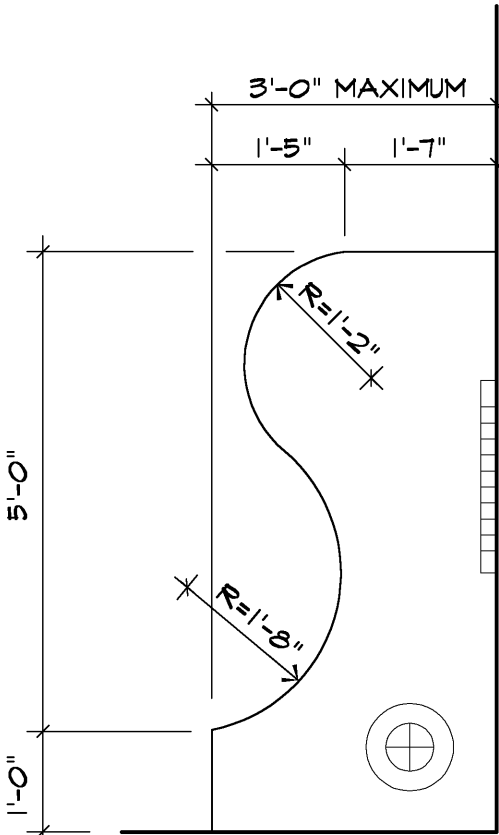
DELUXE KING

SCALE: 1/4" = 1'-0"



ACCESSIBLE KING

SCALE: 1/4" = 1'-0"



CURVED DESK DTL.

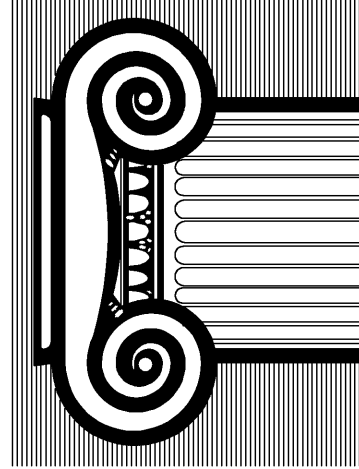
SCALE: 1" = 1'-0"

FURNISHINGS LEGEND	
1	KING BED - HEAD BOARD
2	QUEEN BED - HEAD BOARD
3	NIGHT STAND - 24"W
4	WALL MOUNTED LAMP - PLUG WIRED
5	LAMP AT BACHELOR'S CHEST
6	FLOOR LAMP - PLUG WIRED
7	CURVED WORK DESK - 72"W x 42"D x 30"H
8	EXECUTIVE DESK - 48"W x 28"D x 30"H
9	ACTIVITY CHAIR
10	5 STAR DESK CHAIR
11	DESK LAMP - PLUG WIRED
12	BACHELOR'S CHEST WITH 32" TV (STUDIOS ONLY)
13	LUGGAGE BENCH
14	BACHELOR'S CHEST WITH TV
15	LOUNGE CHAIR WITH OTTOMAN
16	LAMINATE COVERED SHELF -15"D W/ 1" DIA. ROD
17	COFFEE TABLE
18	SOFA-SLEEPER
19	FULL LENGTH MIRROR - 18"W x 60"H
20	FRAMED MIRROR
21	ARTWORK
22	CEILING MOUNTED LIGHT
23	WALL MOUNTED LIGHT
24	NOT USED
25	END TABLE - 20"W x 24"H x 24"D
26	TABLE LAMP - PLUG WIRED
27	WET BAR WITH UNDERCOUNTER REFRIGERATOR AND MICROWAVE
28	NOT USED
29	COFFEE MAKER
30	NOT USED
31	HAIR DRYER
32	IRON & IRONING BOARD
33	SHELVING UNIT (SEE DETAIL 2/A-11)
34	PREMIUM LOUNGE CHAIR WITH ARMS & OTTOMAN
35	NIGHT STAND
36	NIGHT STAND - 18"W
37	BENCH
38	12" W PLANT
39	30" W PLANT
40	CORNER BACHELOR'S CHEST W/ TV
41	CHAISE LOUNGE CHAIR
42	WHIRLPOOL TUB
43	ARMOIRE
TV ARMOIRE MAY BE SUBSTITUTED BUT MINIMUM WIDTH TO BE 36"	
NOTE: MICROWAVE/REFRIGERATOR IN FREESTANDING CABINETS ARE NO LONGER ALLOWED TO BE ADDED. WET BARS WITH MICROWAVE/REFRIGERATOR ARE STILL REQUIRED IN SUITES.	

ELECTRICAL LEGEND	
⊕	DUPLEX OUTLET
⊕⊕	QUADPLEX OUTLET
▼	TELEPHONE OUTLET (W/ DATA PORT)
TV	TV OUTLET
\$	SWITCH
■	EXHAUST FAN
⊖	REMOTE THERMOSTAT
NOTE: HSA REQUIRED WITH ALL ROOMS AT THE DESK AT 36" AFF	

NOTES	
1. AT ADJACENT ROOMS, ELECTRICAL OUTLET LOCATIONS, INCLUDING TV AND TELEPHONE OUTLETS, SHALL BE SHIFTED 6" FOR INSTALLATION. ELECTRICAL CORDS SHOULD BE HIDDEN FROM VIEW. BACK TO BACK OUTLETS ARE NOT ALLOWED.	
2. LIGHT SWITCH AND G.F.I. OUTLETS CAN BE MOUNTED IN A COMMON 4x4 BOX WITH COVER PLATE. COORDINATE CLEARANCE WITH MIRROR.	
3. HEIGHT OF ALL SWITCHES, OUTLETS, ETC., TO MEET A.D.A. REQUIREMENTS AND/OR LOCAL CODES. SWITCHES ON LAMPS MUST BE TOGGLE TYPE.	
4. ELECTRICAL OUTLETS AT DESKS ARE TO BE COORDINATED WITH HAMPTON INN STANDARDS. DEPENDING ON FF&E PROVIDED, CERTAIN OUTLETS MAY NOT BE REQUIRED.	
5. CEILING MOUNTED LIGHT FIXTURE AND FAN AT ALL GUEST ROOM BATHS TO BE SWITCHED SEPARATELY FROM LIGHT.	
6. HEARING IMPAIRED ROOMS SHALL BE EQUIPPED WITH DEVICES SUCH AS FIRE ALARM STROBES, SMOKE DETECTOR STROBES AND DOOR BUZZER STROBES AS REQUIRED BY ADA.	

RICHARD F. STELDT
& ASSOCIATES, LTD.



Drawn: AAP

Approved:

2-23-08 REVISED PER ADDENDUM #1

date comments

REVISIONS

Job: 2232-1107

Date: 12-07-07

Hampton Inn.
98 UNITS FLOWOOD, MS

Sheet

A-12

RICHARD F. STELDT & ASSOCIATES, LTD. ARCHITECTS
OWNERSHIP OF DOCUMENTS
This document, and the ideas and designs incorporated herein, as an instrument of professional service, is the property of Richard F. Steldt and Associates, Ltd. and is not to be used in whole or in part, for any other project without the written authorization of Richard F. Steldt and Associates, Ltd.