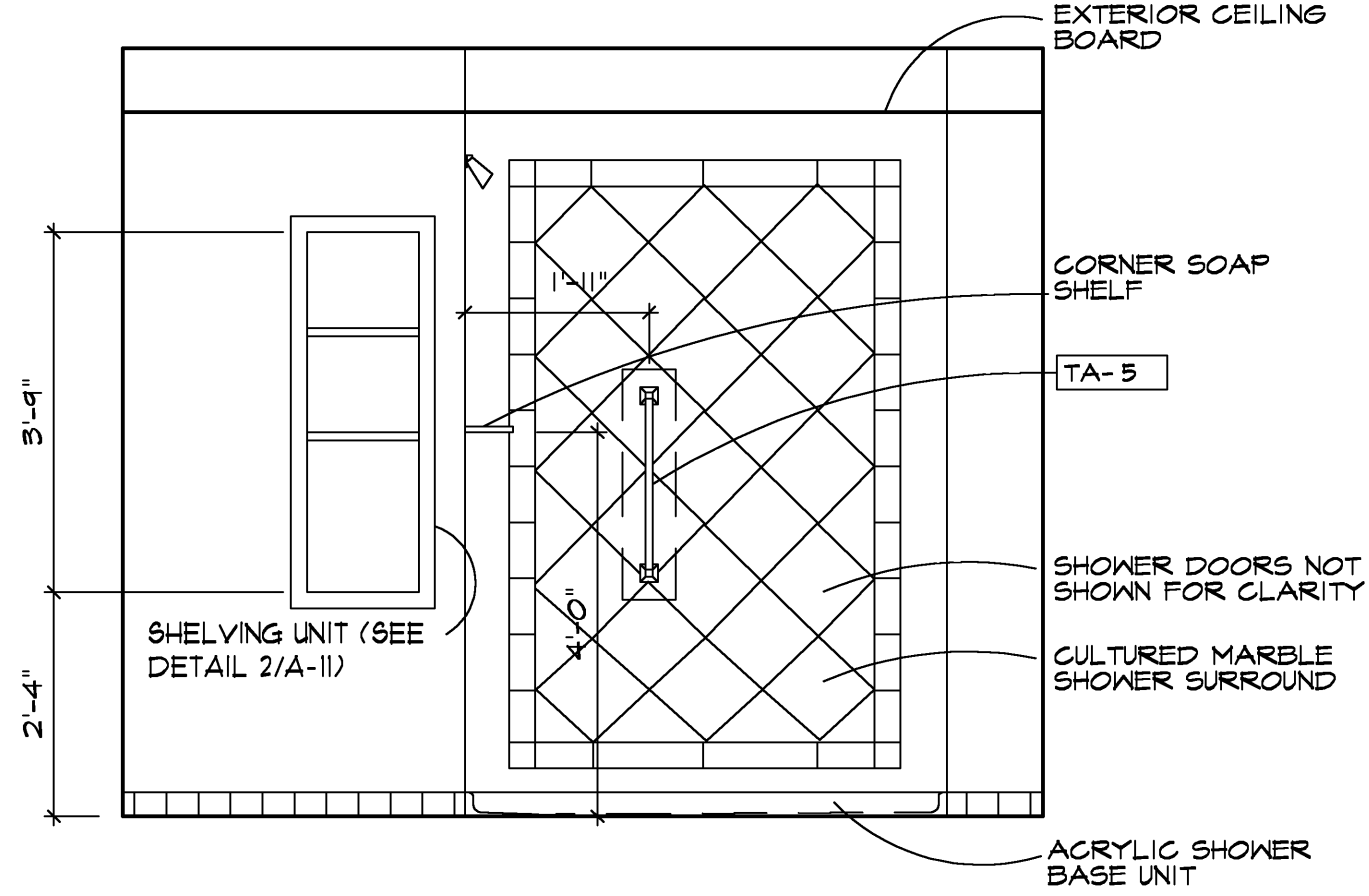
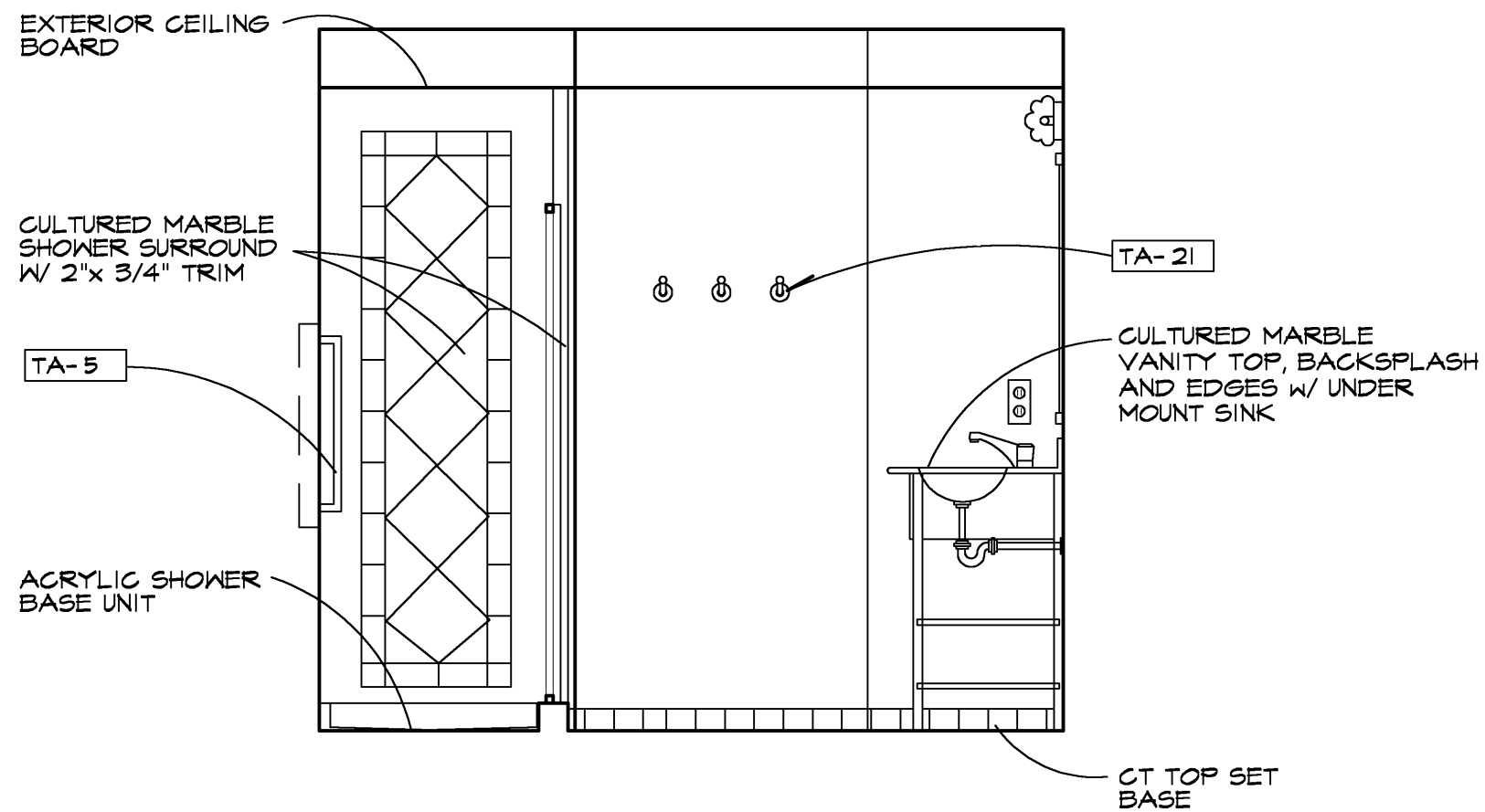


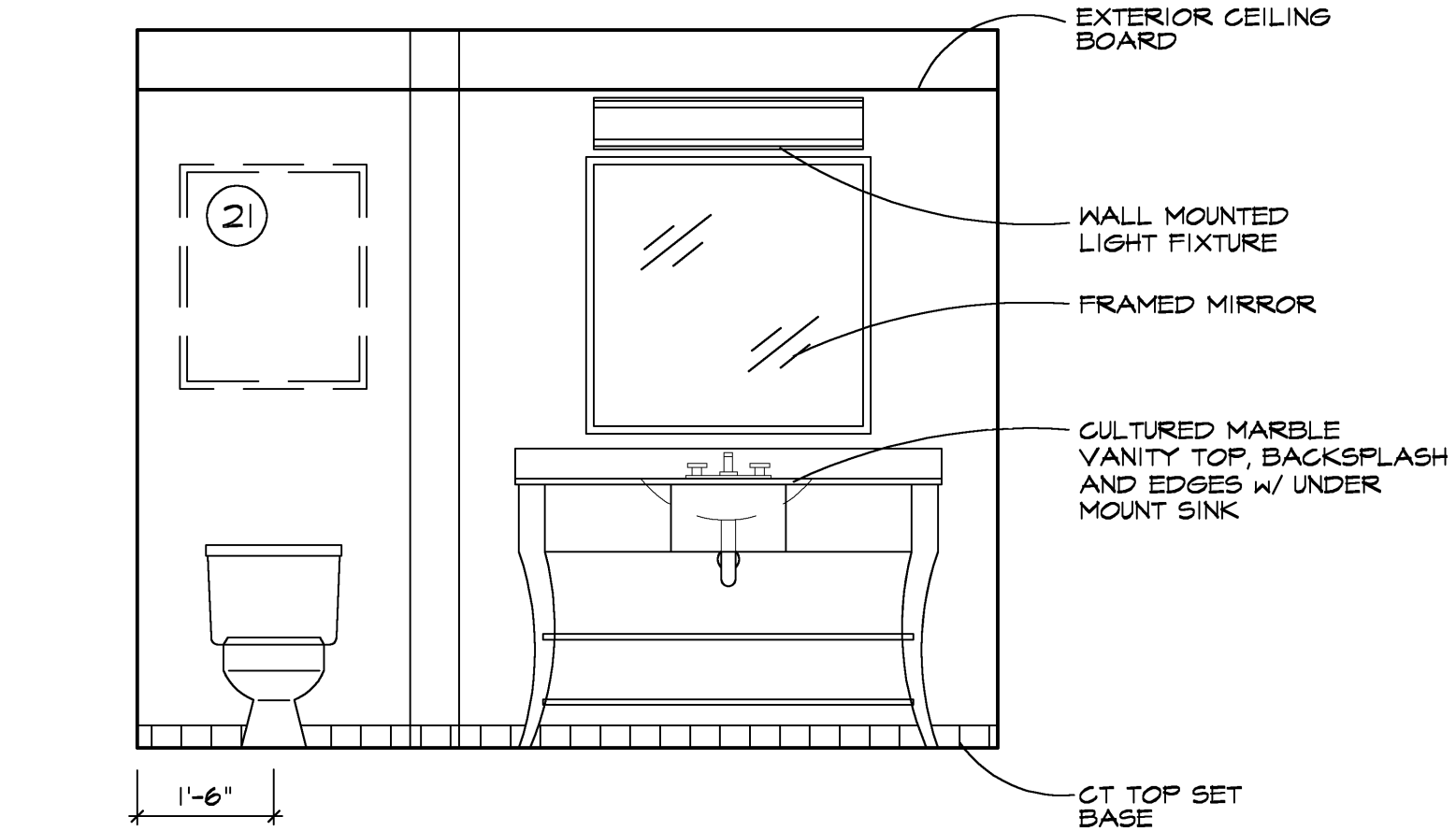
1 KING BATH
1/2" = 1'-0"



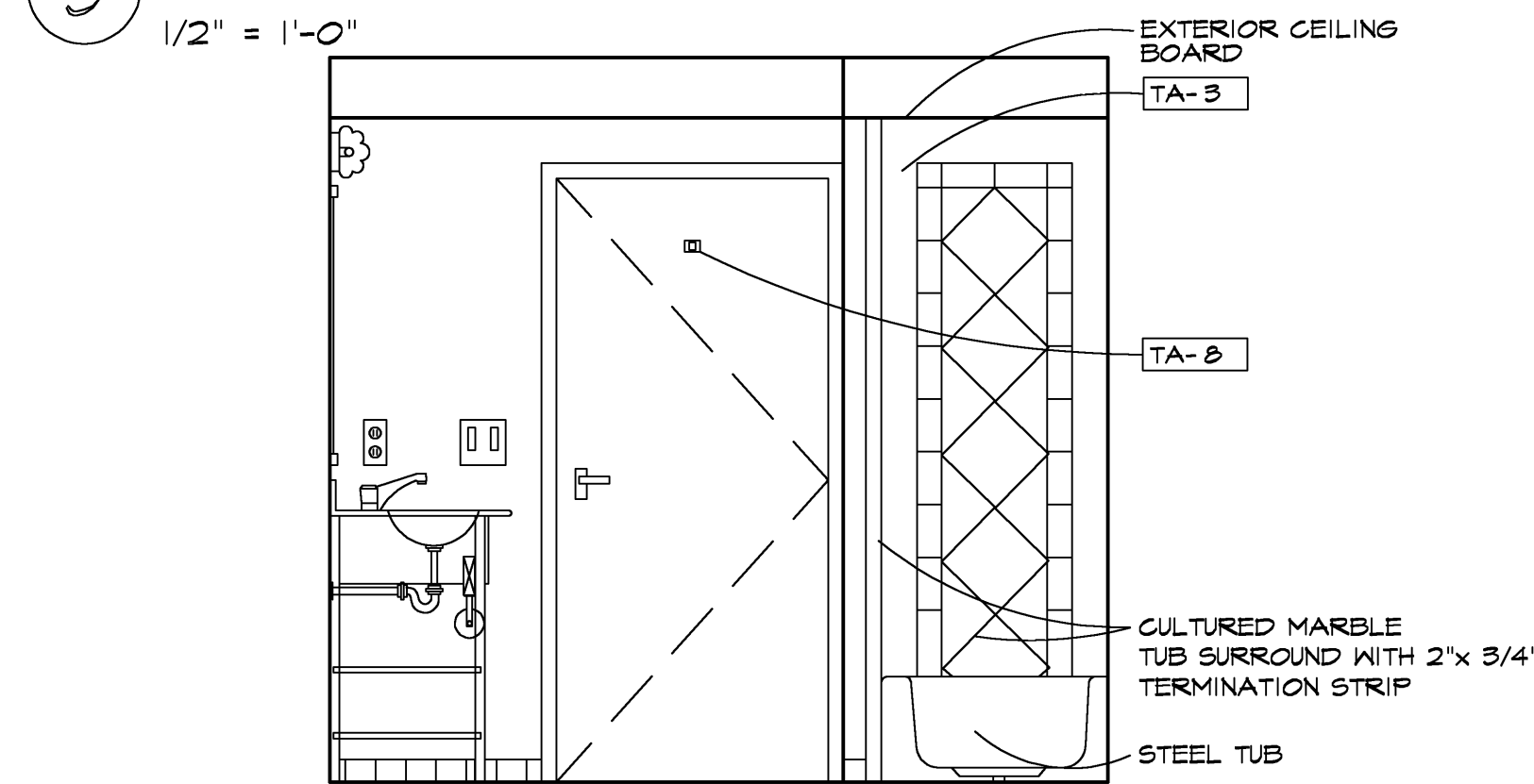
2 KING BATH
1/2" = 1'-0"



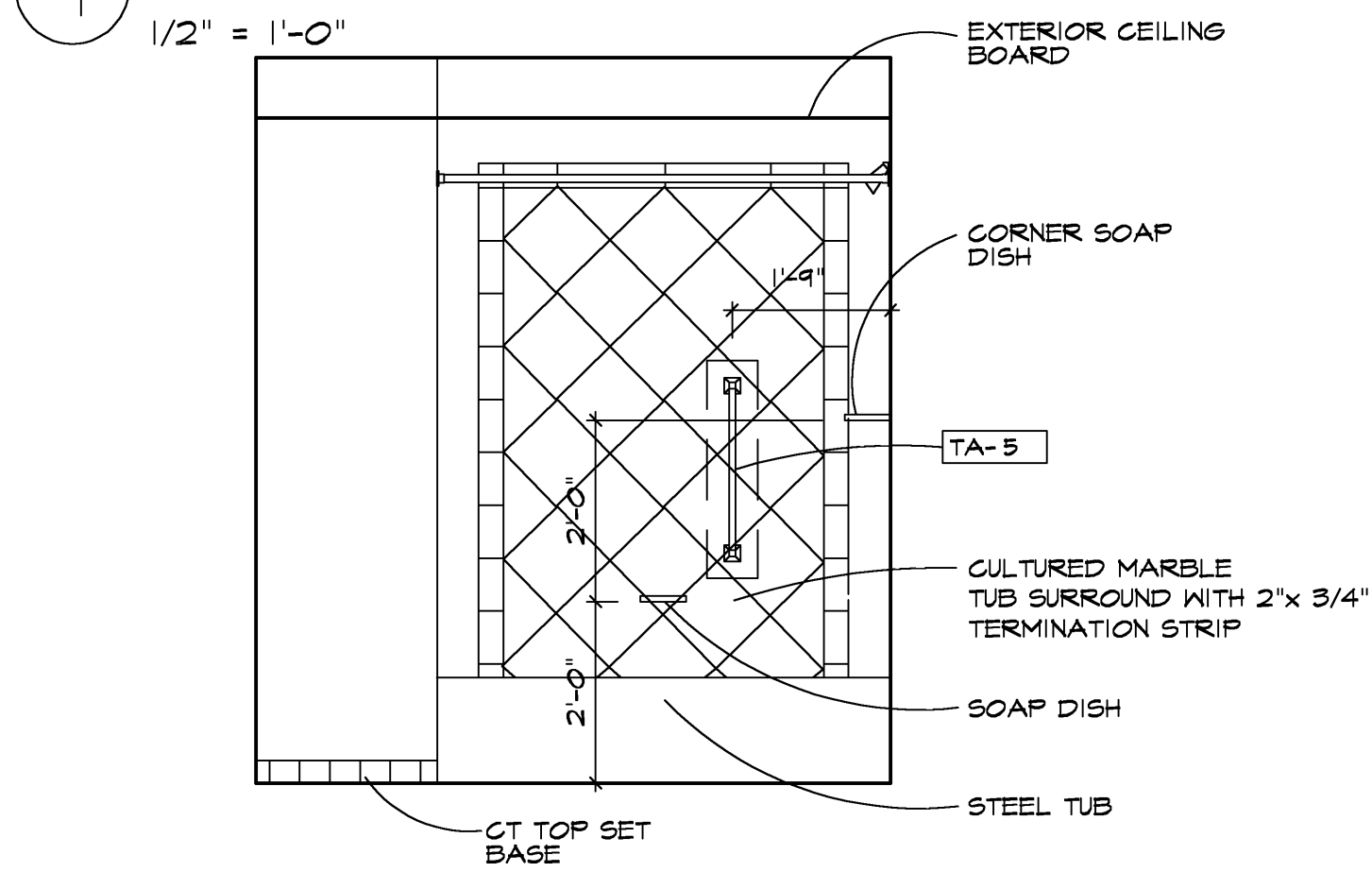
3 KING BATH
1/2" = 1'-0"



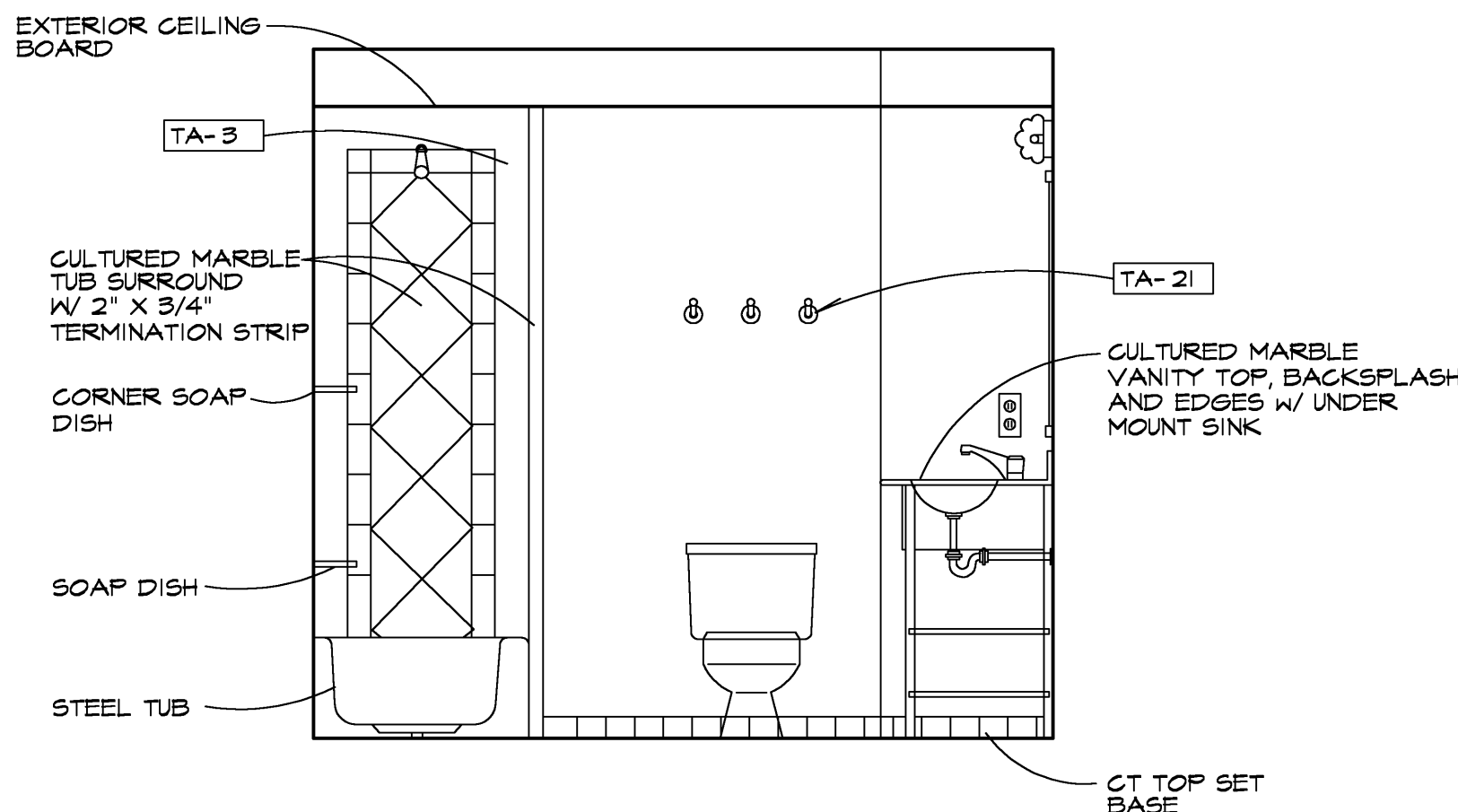
4 KING BATH
1/2" = 1'-0"



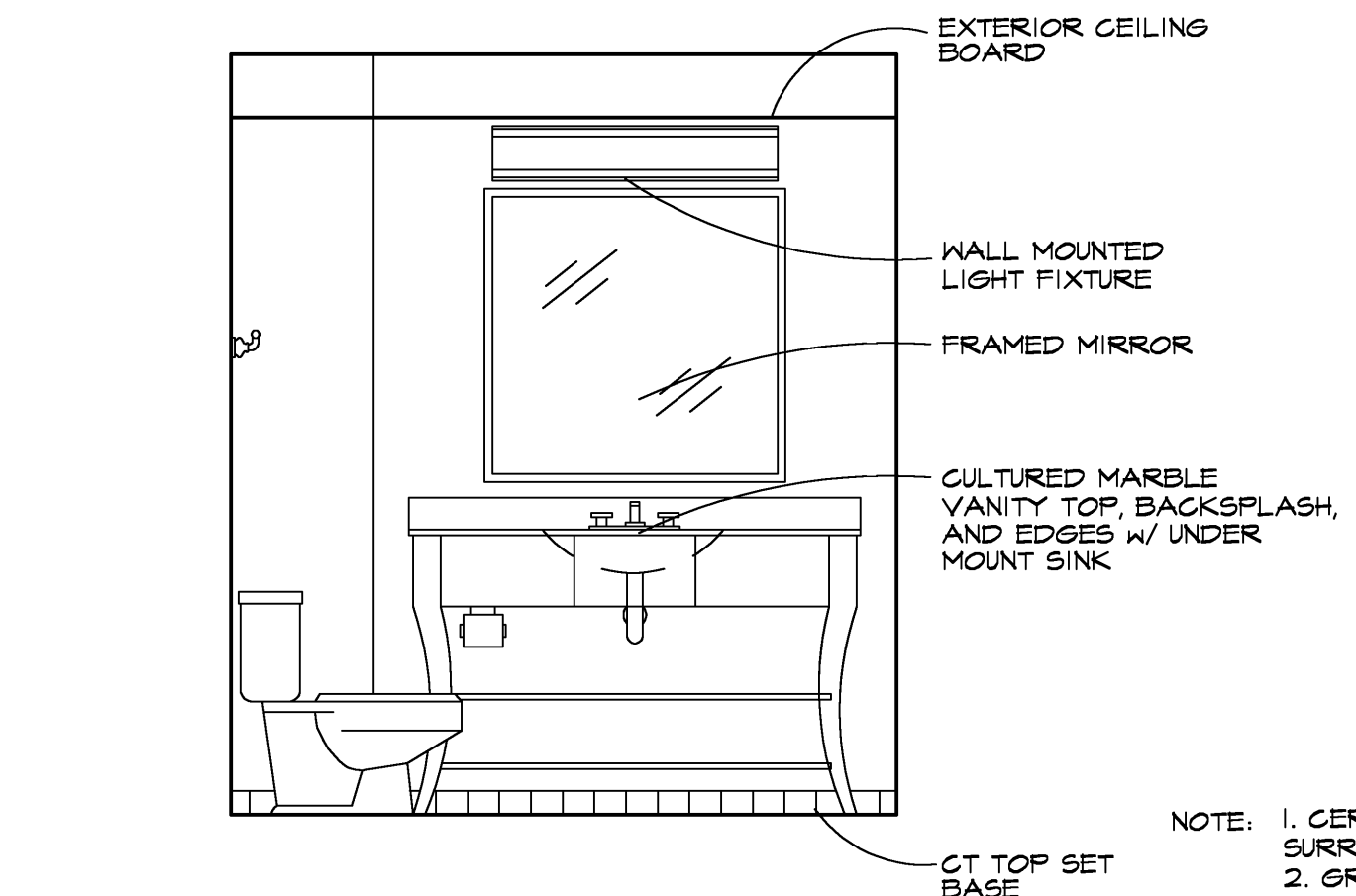
5 DOUBLE QUEEN BATH
1/2" = 1'-0"



6 DOUBLE QUEEN BATH
1/2" = 1'-0"



7 DOUBLE QUEEN BATH
1/2" = 1'-0"



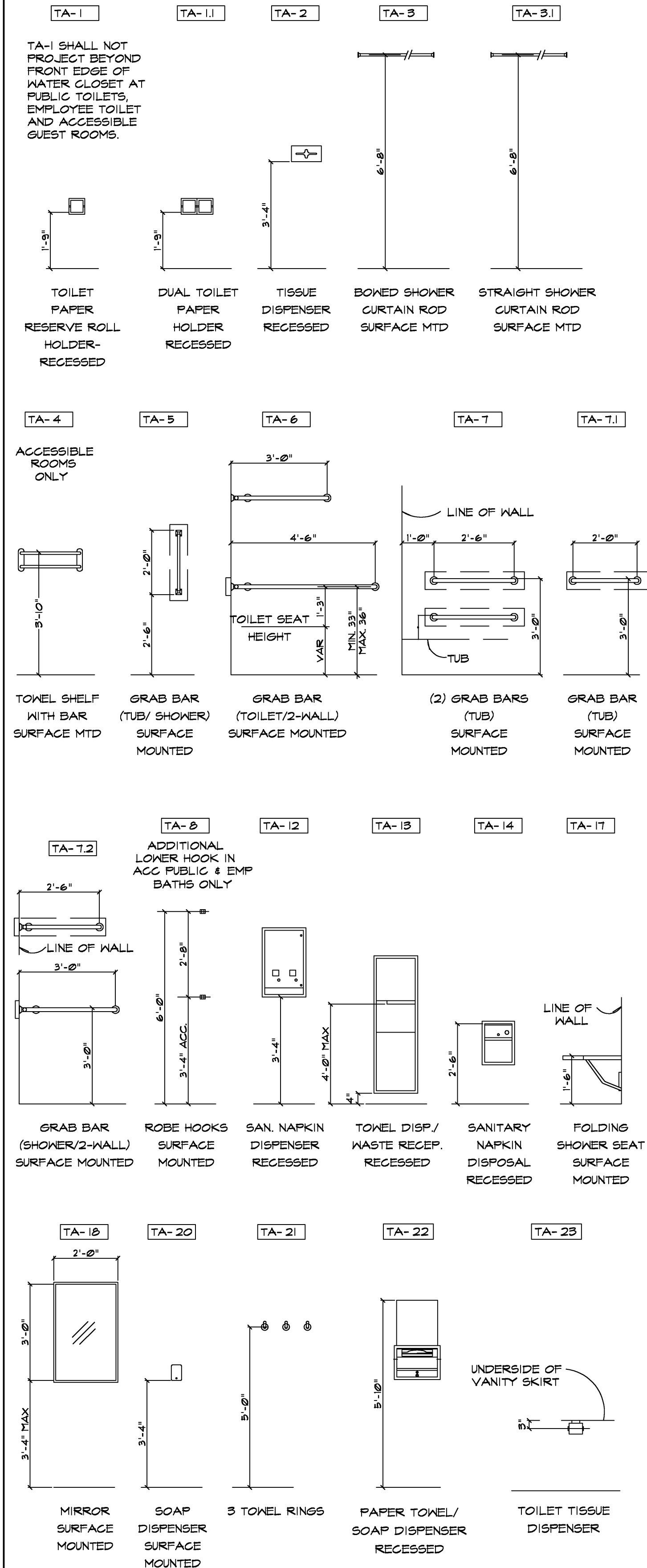
8 DOUBLE QUEEN BATH
1/2" = 1'-0"

NOTE: 1. CERAMIC TILE MAY BE USED AS AN ALTERNATE FOR CULTURED MARBLE SURROUND. TILE MUST MATCH FLOOR TILE AND HAVE RECTIFIED EDGES.
2. GRANITE MAY BE USED AS AN ALTERNATE FOR CULTURED MARBLE VANITIES.

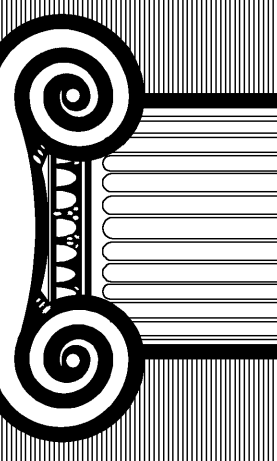
RICHARD F. STELDT & ASSOCIATES, LTD. ARCHITECTS
OWNERSHIP OF DOCUMENTS
This document, and the ideas and designs incorporated herein, as an instrument of professional service, is the property of Richard F. Steldt and Associates, Ltd. and is not to be used in whole or in part, for any other project without the written authorization of Richard F. Steldt and Associates, Ltd.

TOILET ACCESSORIES

NOTE: PROVIDE WOOD BLOCKING FOR ALL TOILET ACCESSORIES MOUNTED IN GYP. BD. PARTITIONS. MAINTAIN INTEGRITY OF FIRE RATING WHERE ACCESSORIES ARE IN RATED WALLS.



RICHARD F. STELDT
ARCHITECT
502-4500
N85 W10056 APPLETON AVE., MENOMONEE FALLS, WI 53051



Drawn: AAP

Approved:

2-23-08
NO CHANGE

date comments

REVISIONS

Job: 2232-1107

Date: 12-07-07

Hampton Inn.
98 UNITS
FLOWOOD, MS

Sheet

A-14