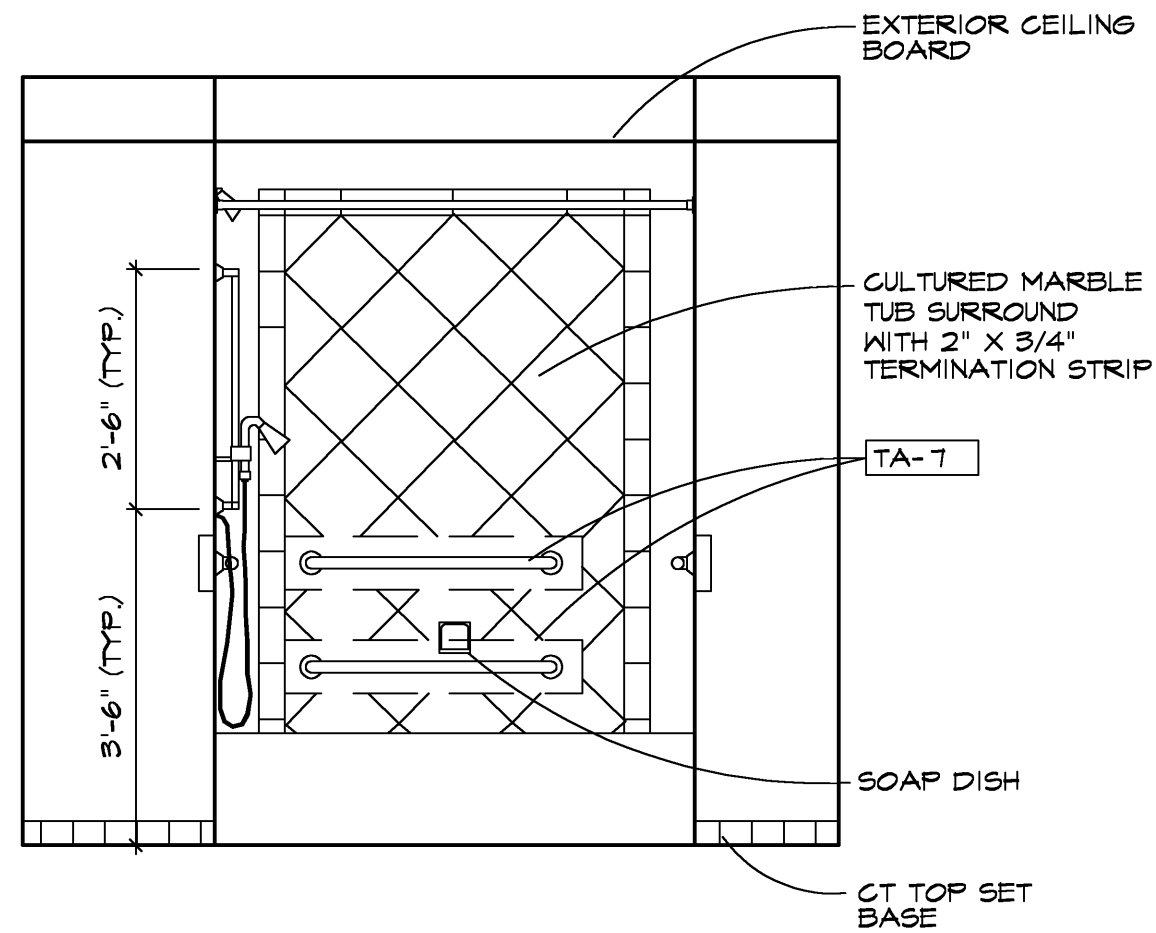
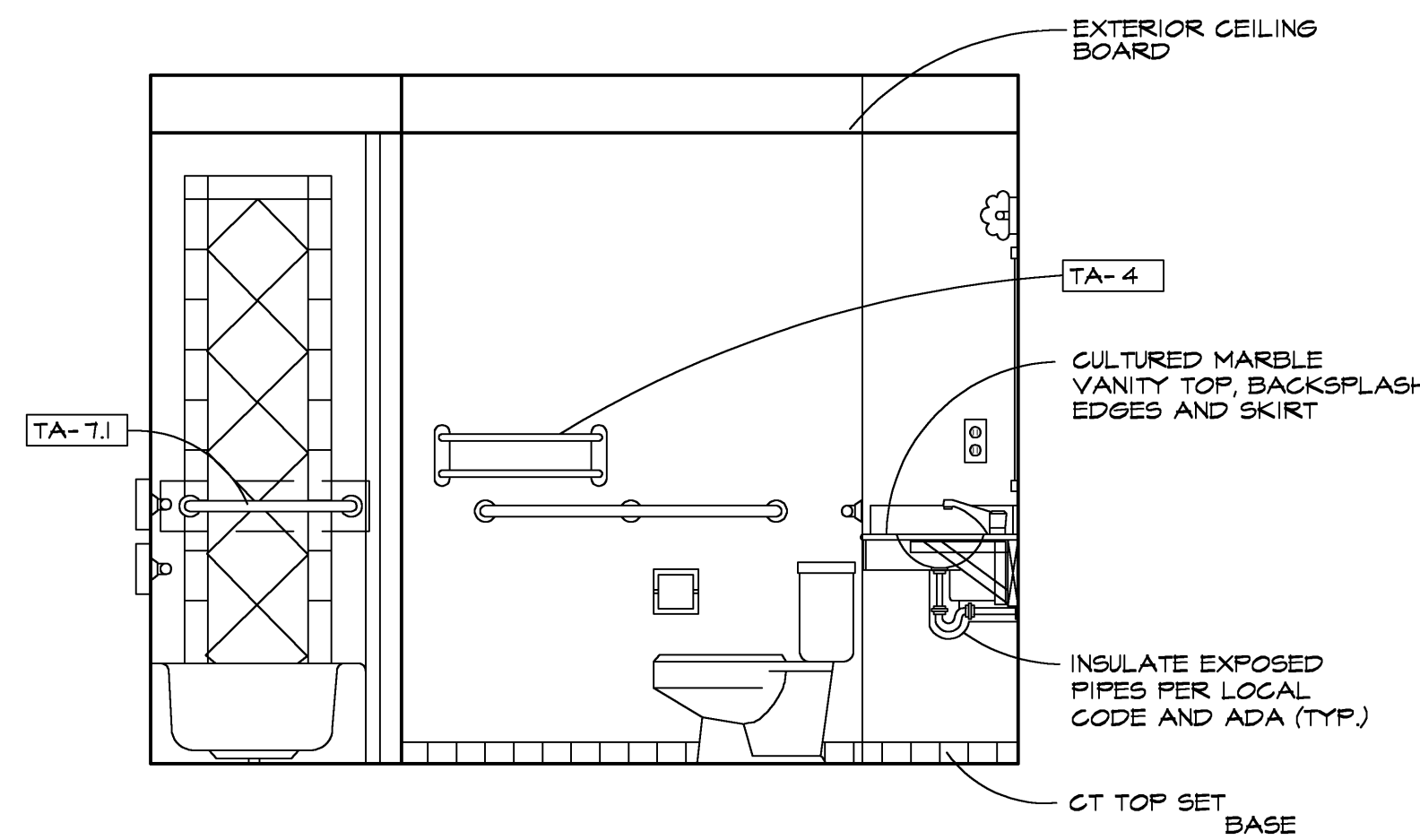


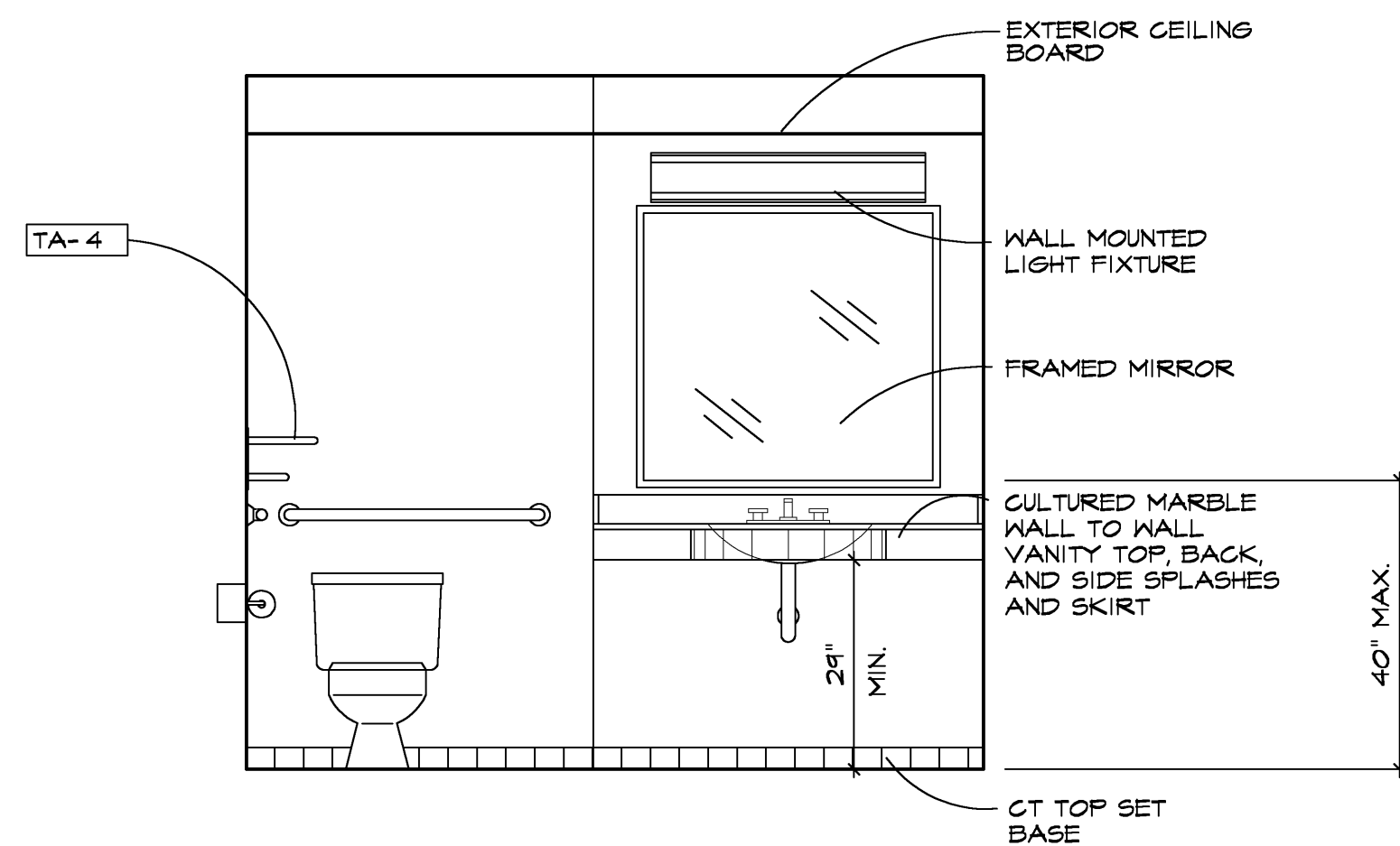
① ACC KING BATH
1/2" = 1'-0" ACC DOUBLE QUEEN



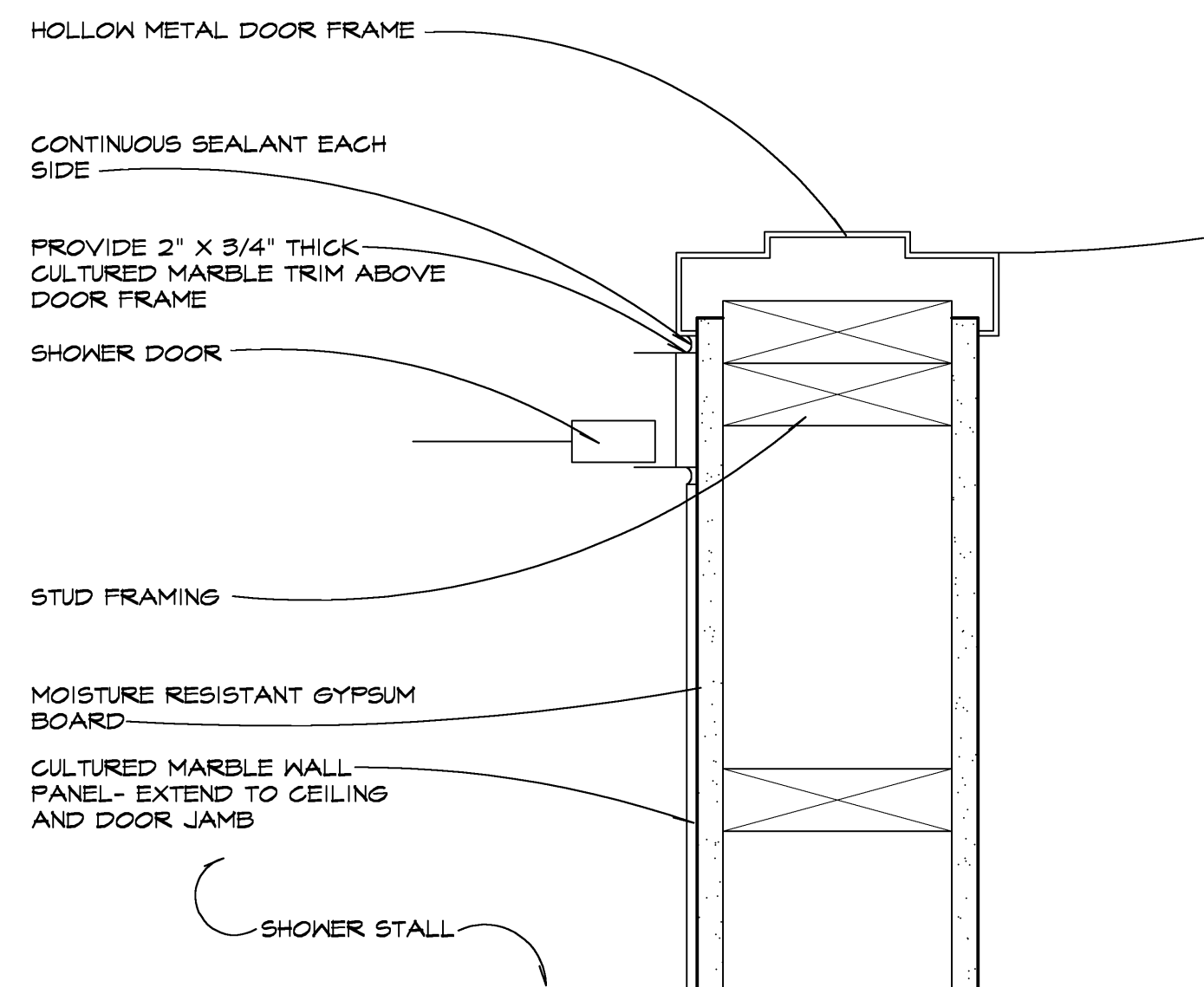
② ACC KING BATH
1/2" = 1'-0" ACC DOUBLE QUEEN



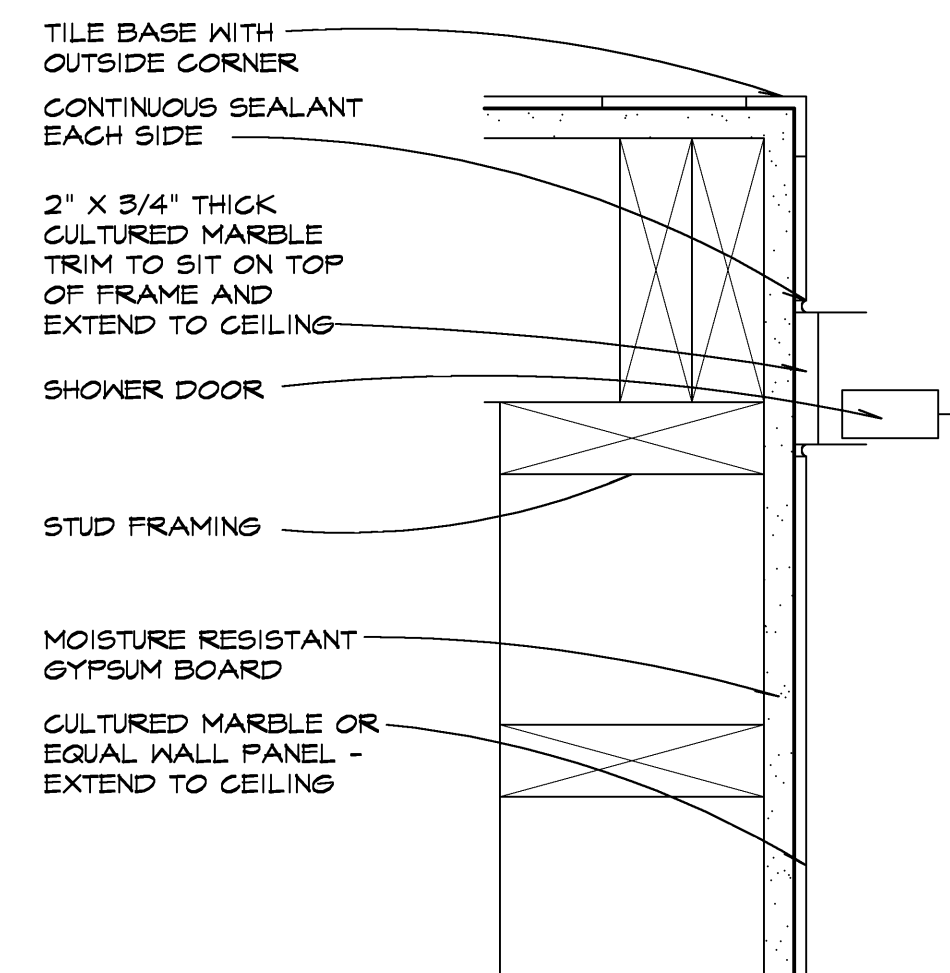
③ ACC KING BATH
1/2" = 1'-0" ACC DOUBLE QUEEN



④ ACC KING BATH
1/2" = 1'-0" ACC DOUBLE QUEEN

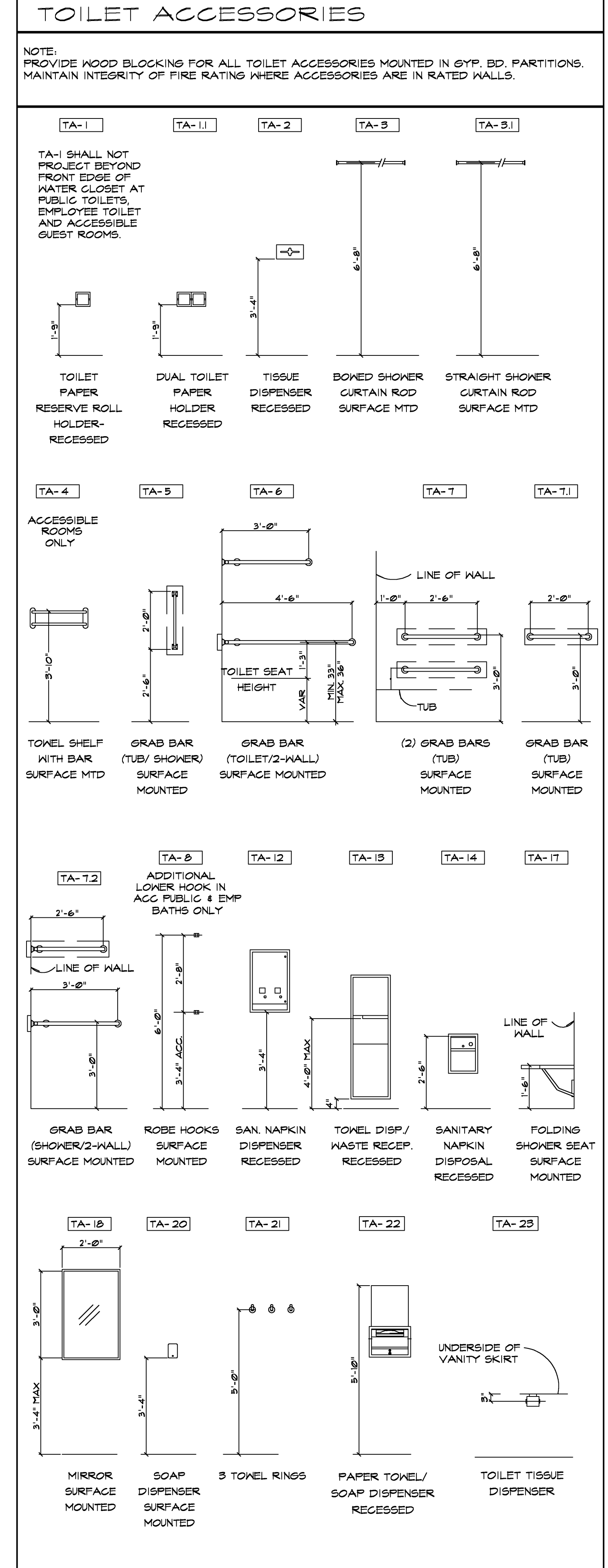


⑤ SHOWER DOOR DETAIL
3" = 1'-0"

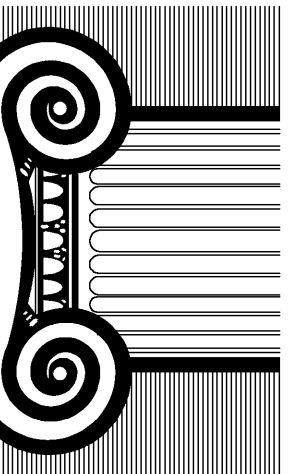


⑥ SHOWER DOOR DETAIL
3" = 1'-0"

RICHARD F. STELDT & ASSOCIATES, LTD. ARCHITECTS
OWNERSHIP OF DOCUMENTS
This document, and the ideas and designs incorporated herein, are an instrument of professional service, is the property of Richard F. Steldt and Associates, Ltd. and is not to be used in whole or in part, for any other project without the written authorization of Richard F. Steldt and Associates, Ltd.



RICHARD F. STELDT
ARCHITECT
N85 W10056 APPLETON AVE., MENOMONEE FALLS, WI 53051
(262) 502-4500



Drawn: AAP

Approved:

7-23-08 NO CHANGE

date comments

REVISIONS

Job: 2232-1107

Date: 12-07-07

Hampton Inn.
98 UNITS
FLOWOOD, MS

Sheet

A-15