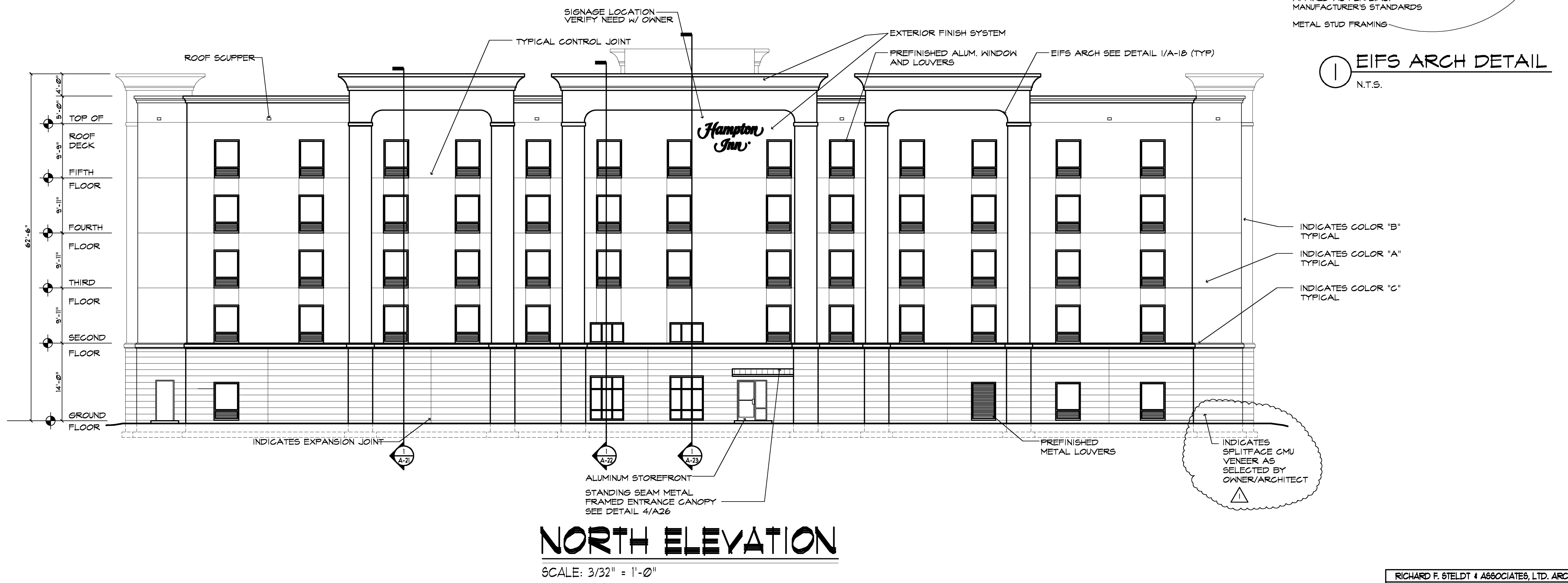


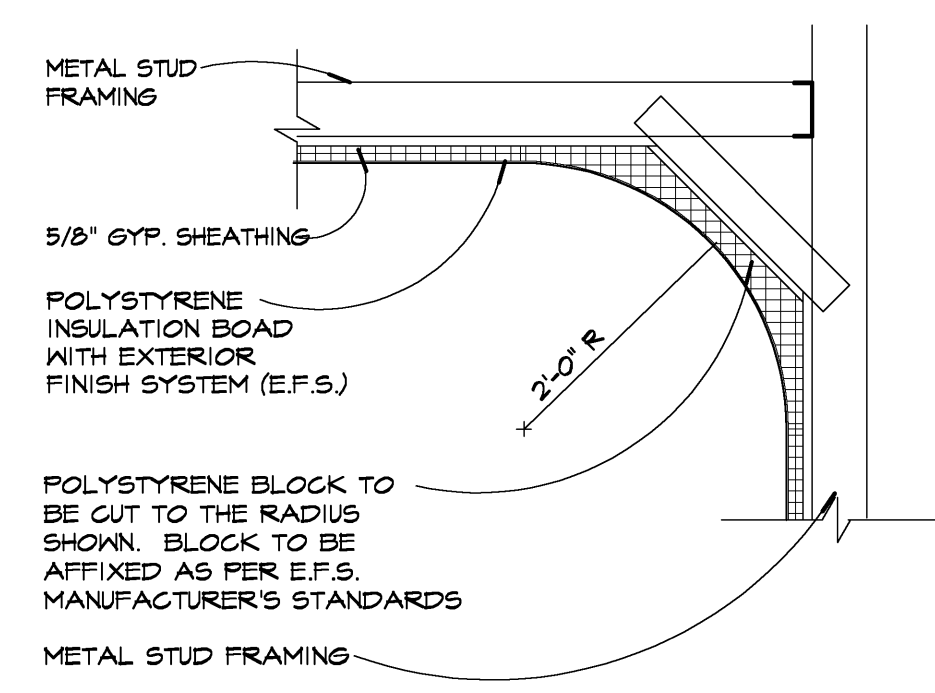
SOUTH ELEVATION

SCALE: 3/32" = 1'-0"



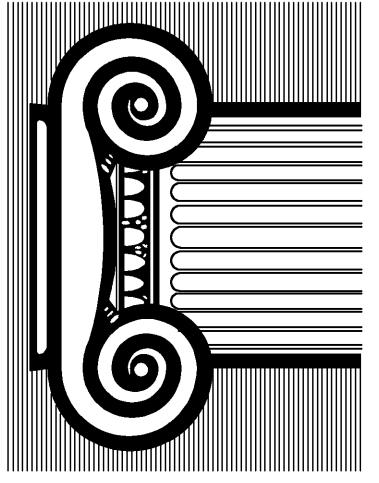
NORTH ELEVATION

SCALE: 3/32" = 1'-0"



EIFS ARCH DETAIL

N.T.S.



RICHARD F. STELDT
ARCHITECT

(282) 502-4500
N85 W10056 APPLETON AVE., MENOMONEE FALLS, WI 53051

Drawn: AAP

Approved:

2-29-08
REVISED PER ADDENDUM 1

date comments

REVISIONS

Job: 2232-1107

Date: 12-07-07

Hampton Inn.
98 UNITS
FLOWOOD, MS

Sheet

A-18

RICHARD F. STELDT & ASSOCIATES, LTD. ARCHITECTS
OWNERSHIP OF DOCUMENTS
This document, and the ideas and designs incorporated herein, are an instrument of professional service to the property of Richard F. Steldt and Associates, Ltd. and is not to be used in whole or in part, for any other project without the written authorization of Richard F. Steldt and Associates, Ltd.