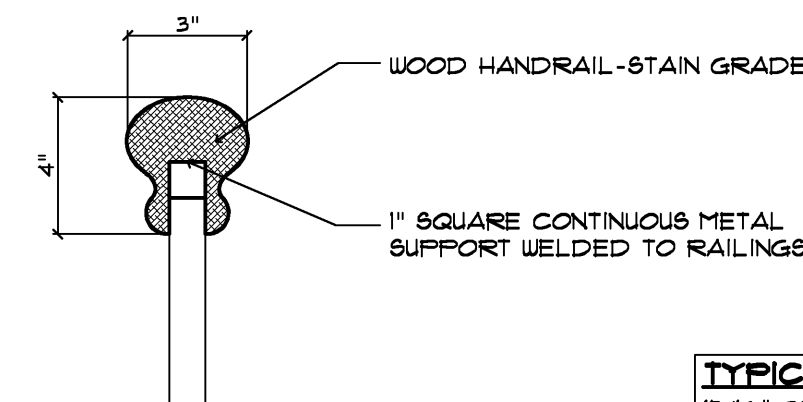


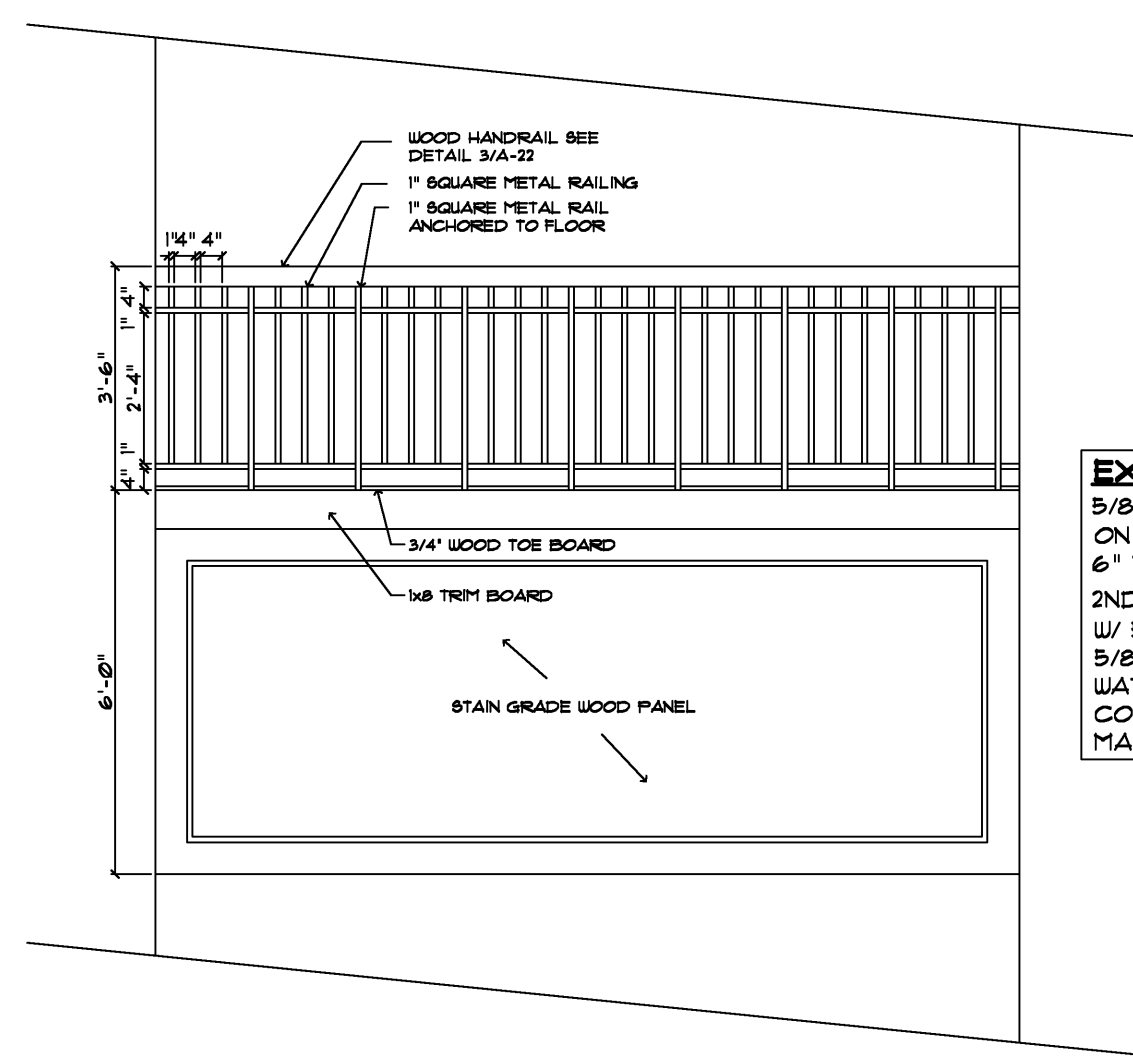
4 COLUMN DETAILS

1" = 1'-0"



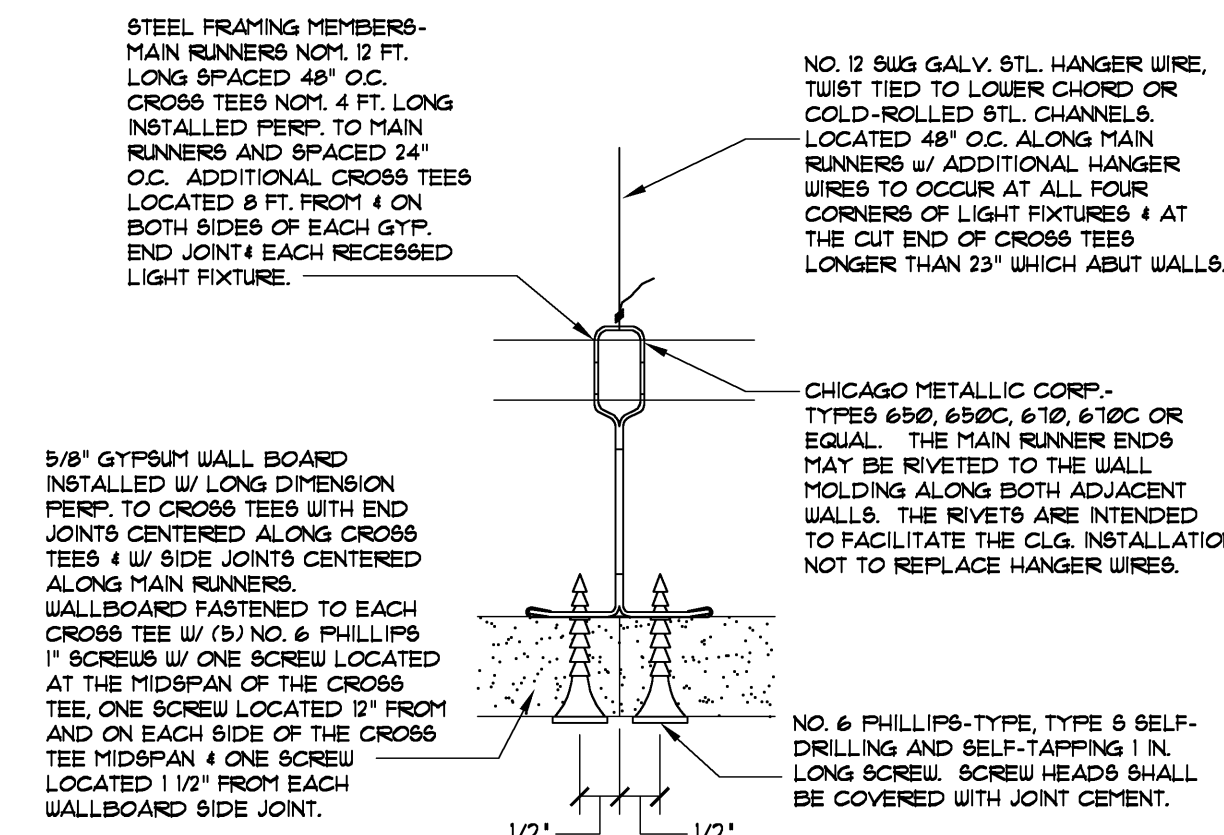
3 RAILING DETAIL

N.T.S.



2 RAILING ELEVATION

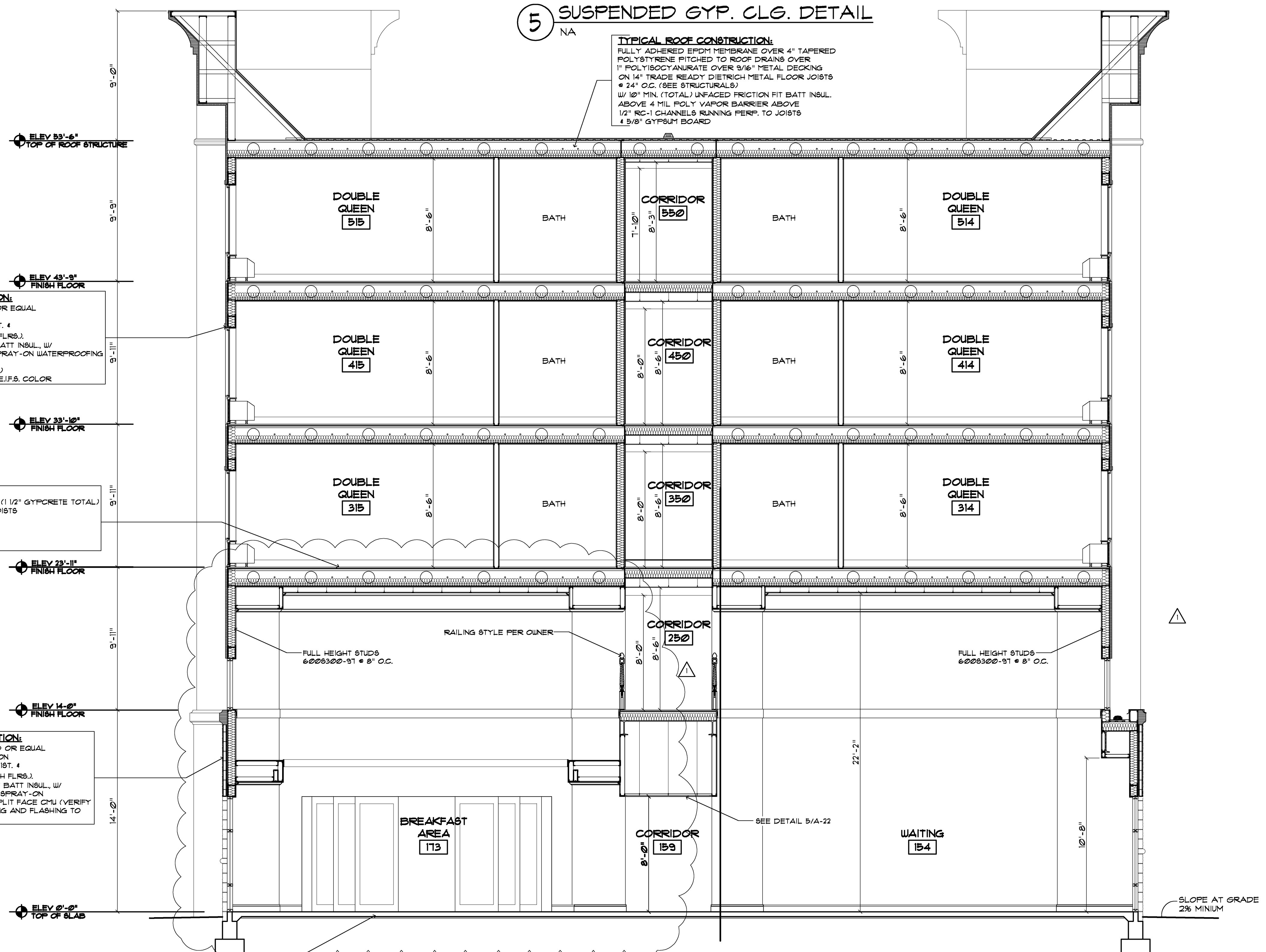
3/8" = 1'-0"



5 SUSPENDED GYP. CLG. DETAIL

NA

TYPICAL ROOF CONSTRUCTION:
FULLY ADHERED EPDM MEMBRANE OVER 4" TAPERED POLYSTYRENE FITTED TO ROOF DRAINS OVER 1" POLYISOCYANURATE OVER 9/16" METAL DECKING ON 14" TRADE READY DIETRICH METAL FLOOR JOISTS @ 24" O.C. (SEE STRUCTURALS.)
w/ 10" MIN. (TOTAL) UNFACED FRICTION FIT BATT INSUL. ABOVE 4 MIL POLY VAPOR BARRIER ABOVE 1/2" RC-1 CHANNELS RUNNING PERP. TO JOISTS & 5/8" GYPSUM BOARD



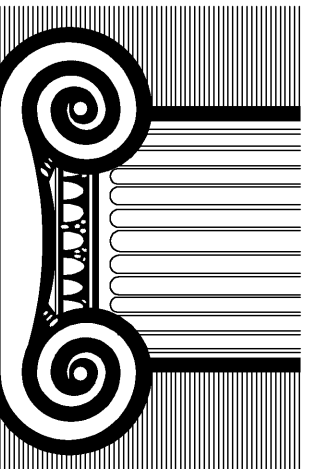
1 TRANSVERSE SECTION THRU 2 STORY SPACE

1/4" = 1'-0"

RICHARD F. STELDT & ASSOCIATES, LTD. ARCHITECTS
DESIGNER OF DOCUMENTS
This document, and the ideas and designs incorporated herein, as an instrument of professional service, is the property of Richard F. Steldt and Associates, Ltd. and is not to be used in whole or in part, for any other project without the written authorization of Richard F. Steldt and Associates, Ltd.

RICHARD F. STELDT
ARCHITECT

N85 W10056 APPLETON AVE., MENOMONEE FALLS, WI 53051
(262) 502-4500



Drawn: AAP/DD5

Approved:

2-25-08
REVISED PER ADDENDUM 1

date comments

REVISIONS

Job: 2232-1107

Date: 12-07-07

Hampton Inn.
98 UNITS
FLOWOOD, MS

Sheet

A-22