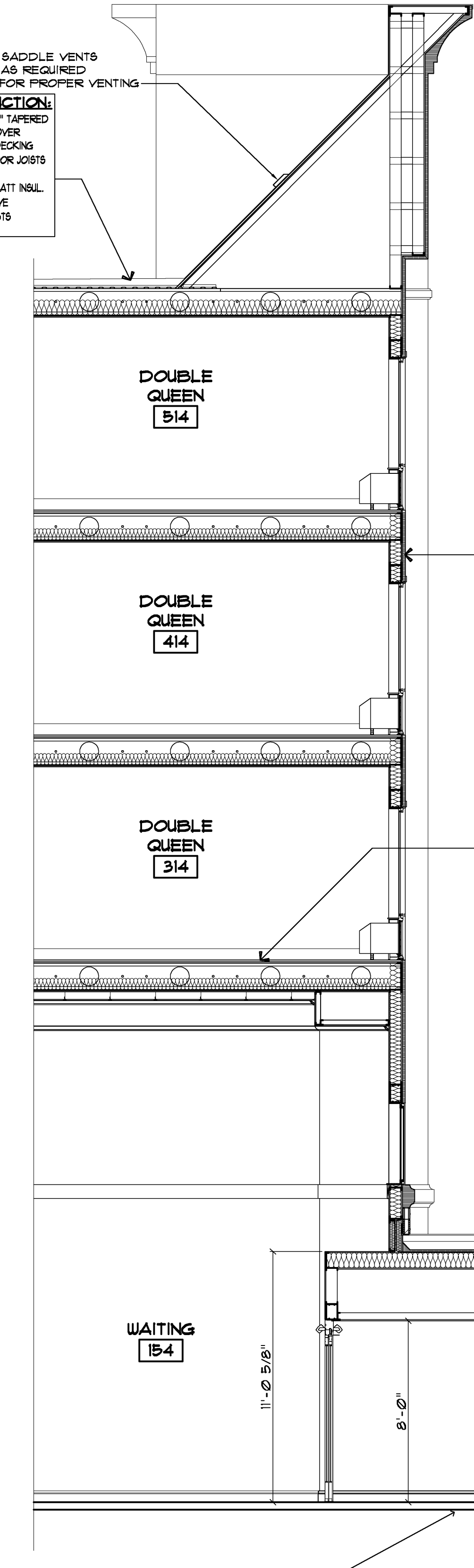


**TYPICAL ROOF CONSTRUCTION:**  
FULLY ADHERED EPDM MEMBRANE OVER 4" TAPERED POLYSTYRENE PITCHED TO ROOF DRAIN OVER 1" POLYSTYRENE INSULATE OVER 3/8" METAL DECKING ON 14" TRADE READY DIETRICH METAL FLOOR JOISTS @ 24" O.C. (SEE STRUCTURALS)  
W/ 10" MIN. (TOTAL) UNFACED FRICTION FIT BATT INSUL. ABOVE 4 MIL. POLY VAPOR BARRIER ABOVE 1/2" RC-1 CHANNELS RUNNING PERP. TO JOISTS & 5/8" GYPSUM BOARD

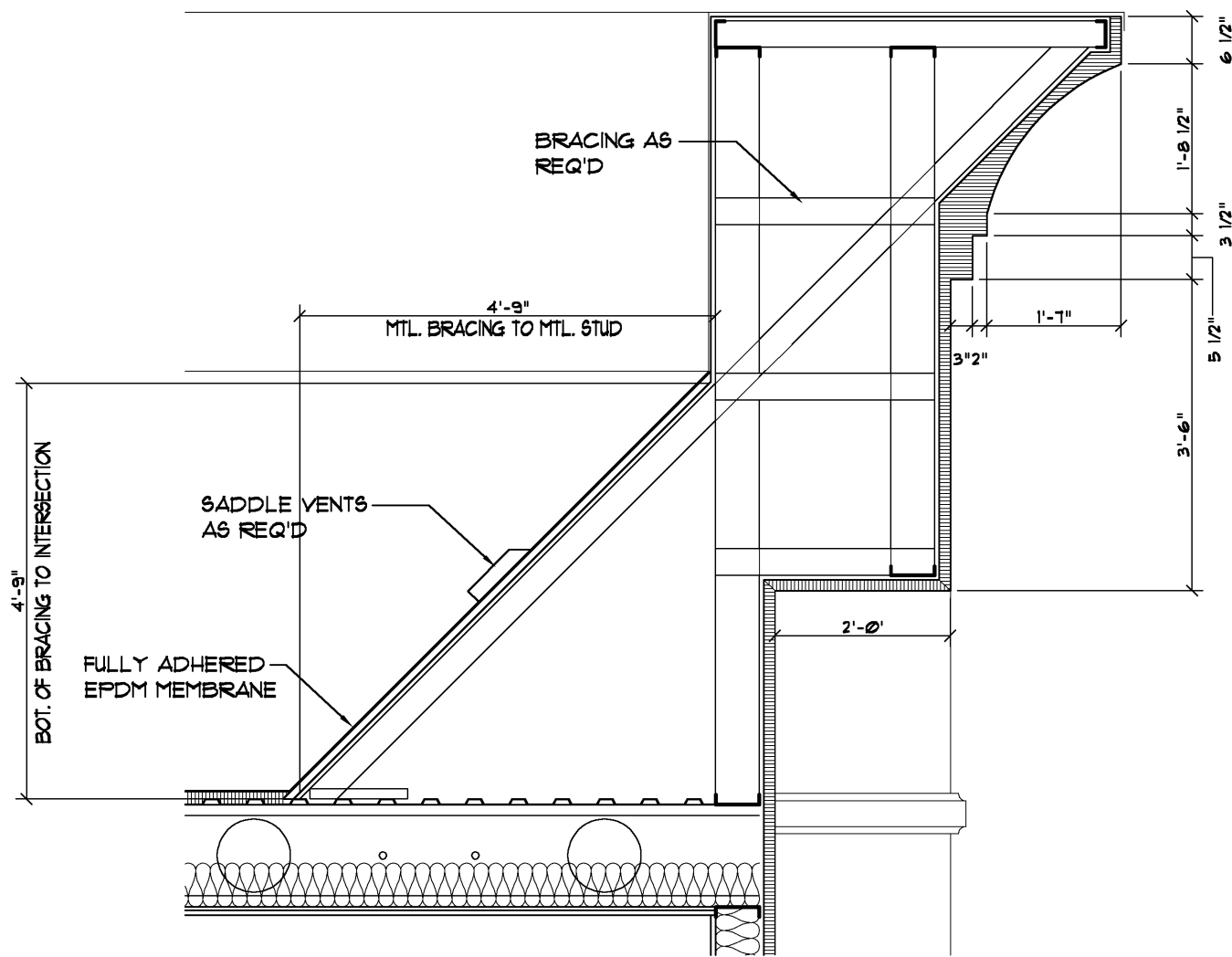


**EXTERIOR WALL CONSTRUCTION:**  
5/8" WR. TYPE "X" GYPSUM BOARD OR EQUAL ON 4 MIL. POLY VAPOR BARRIER ON 6" MTL. STUDS @ 16" O.C. (1/6" GA. @ 1ST, 4TH & 5TH FLRS., 1/8" GA. @ 2ND, 3RD, 4TH & 5TH FLRS.)  
W/ 5 1/2" R-19 UNFACED FRICTION FIT BATT INSUL. W/ 5/8" DENS GLASS SHEATHING WITH SPRAY-ON WATERPROOFING W/ ADHERED 1 1/2" EPS (SEE EXTERIOR ELEVATIONS FOR COLORS)  
CAULKING AND FLASHING TO MATCH E.I.F.S. COLOR

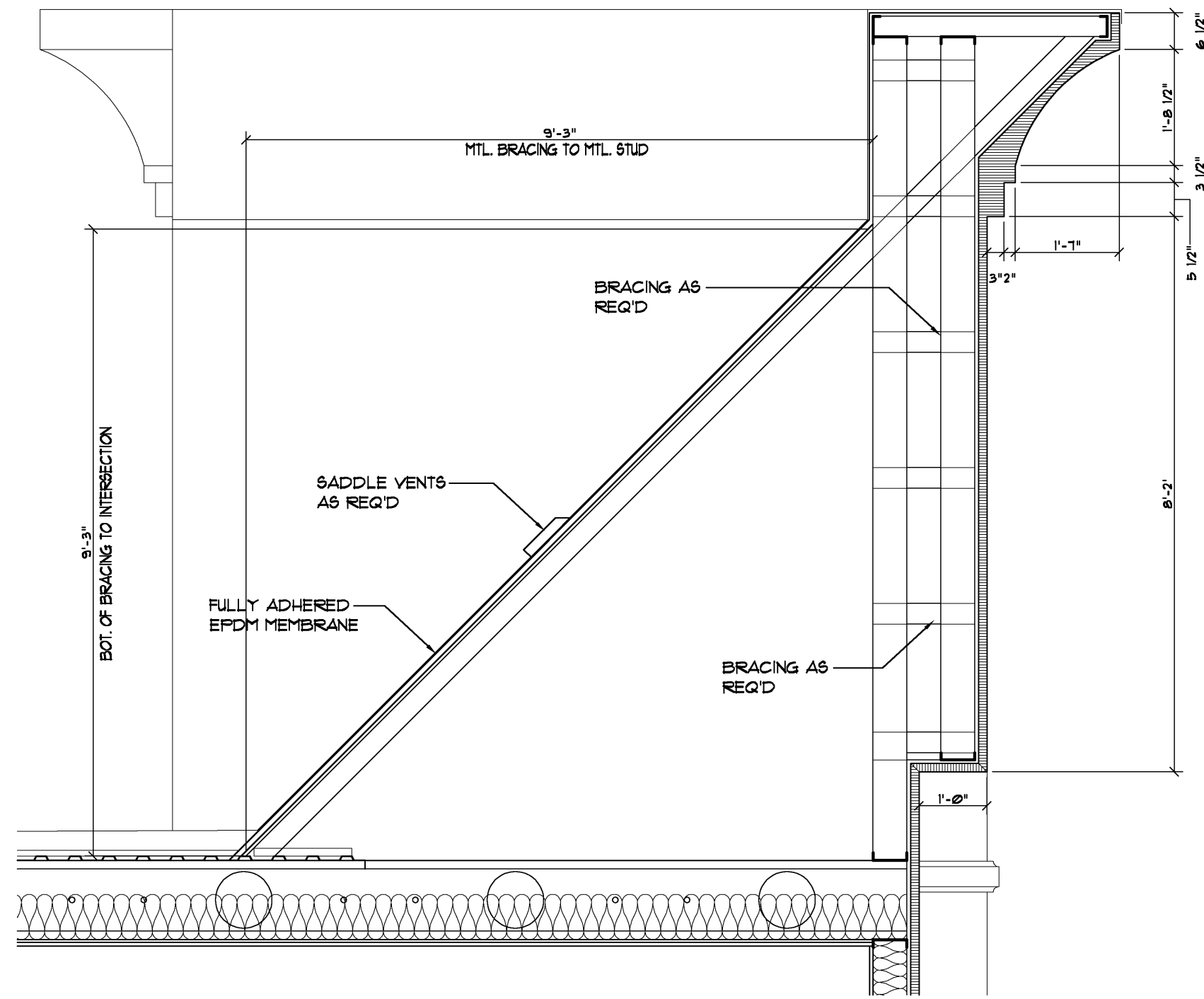
**TYPICAL FLOOR CONSTRUCTION:**  
15/16" GYPCRETE FILLING INTO 3/16" METAL DECK (1 1/2" GYPCRETE TOTAL) ON 14" TRADE READY DIETRICH METAL FLOOR JOISTS @ 24" O.C. (OR SEE STRUCTURALS)  
W/ 5 1/2" R-19 UNFACED FRICTION FIT BATT INSUL. 1/2" RC-1 CHANNELS RUNNING PERP. TO JOISTS & 5/8" GYPSUM BOARD

**TYPICAL FLOOR CONSTRUCTION:**  
4" THICK CONC. SLAB REINFORCE W/ 6/16 W4XW4 WWM. ON 6 MIL. VAPOR BARRIER ON 2" SAND OR GEOTEXTILE MAT ON 6" CRUSHED COMPACTED STONE BASE ON UNDISTURBED SOIL.

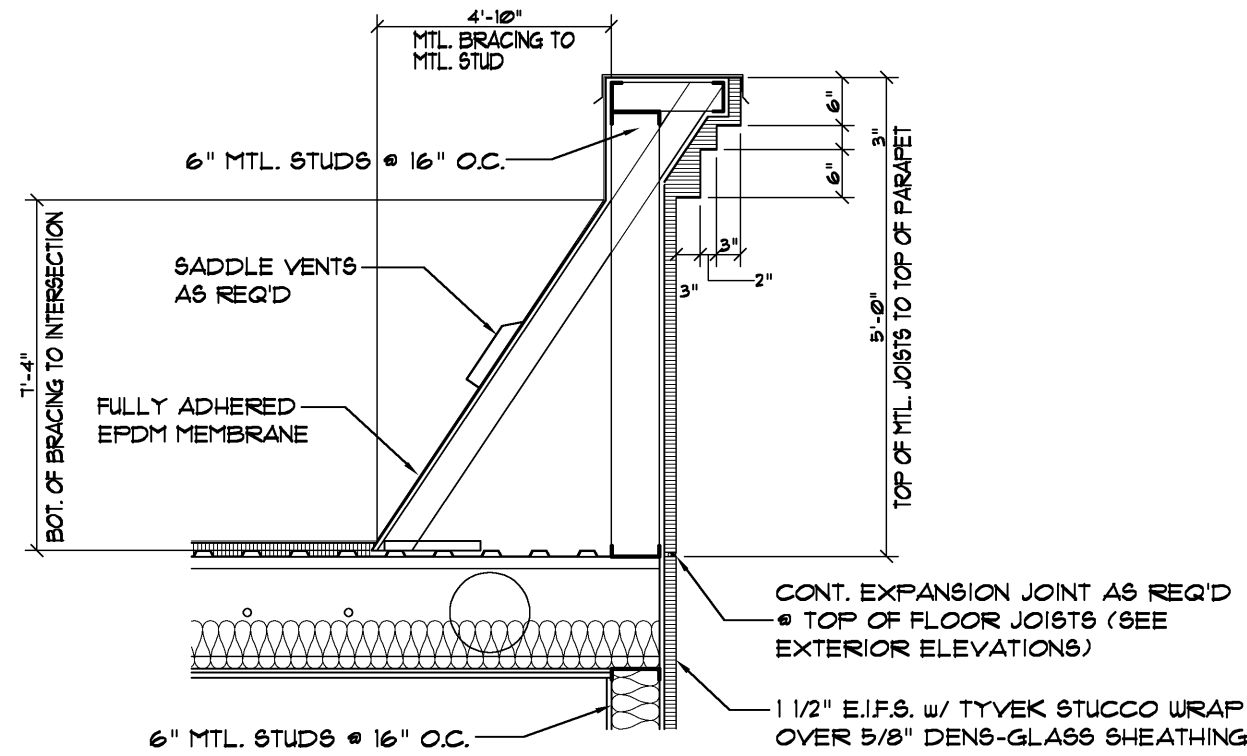
1 CANOPY SECTION  
1/4" = 1'-0"



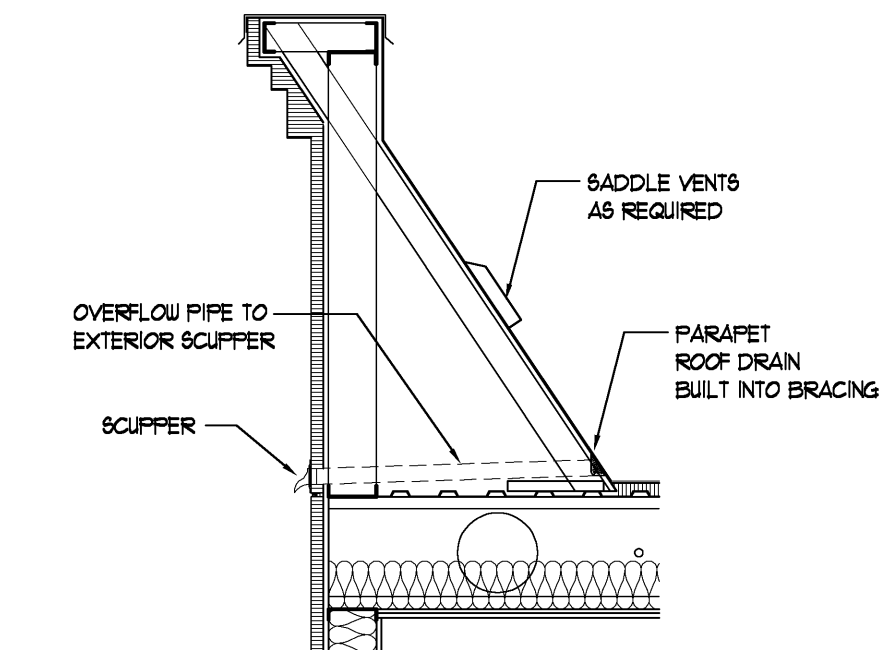
2 LOW PROJECTED PARAPET DETAIL  
1/2" = 1'-0"



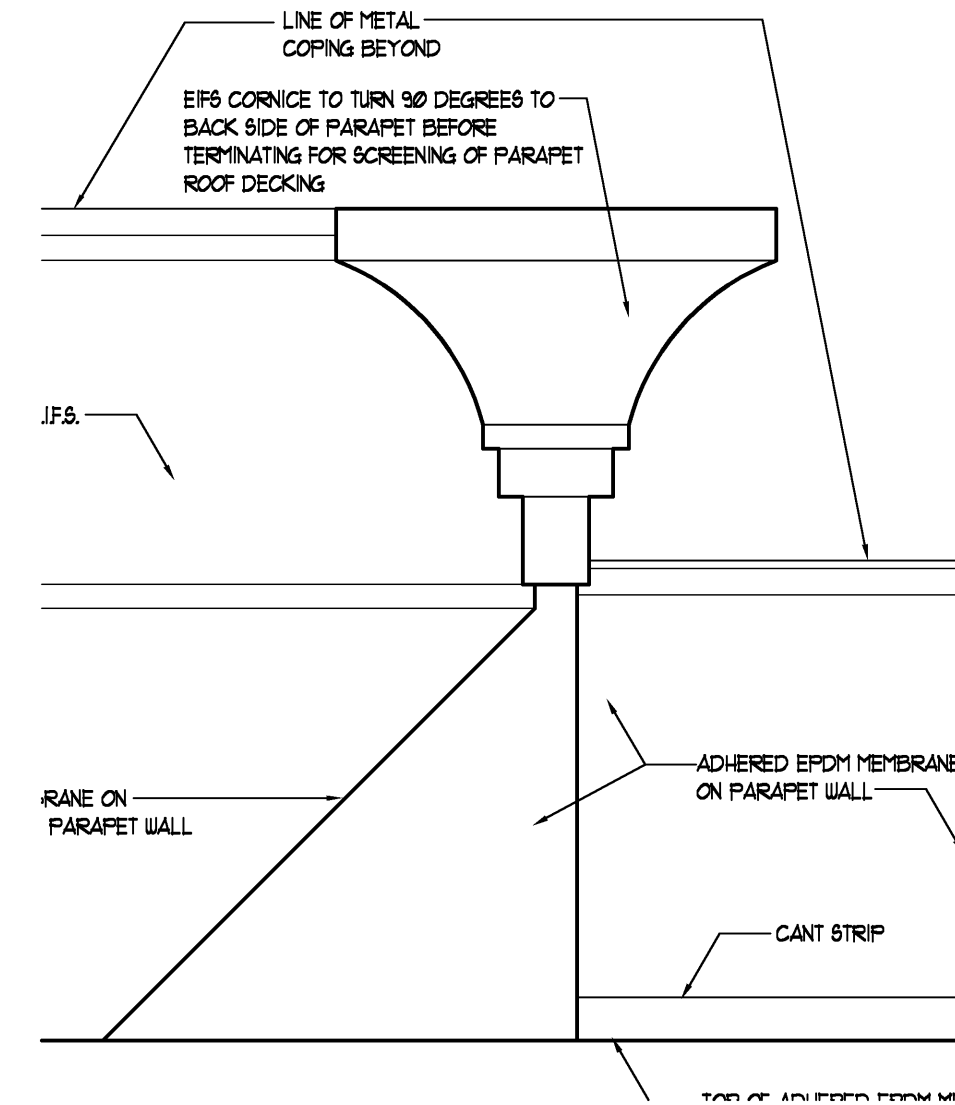
3 HIGH PROJECTED PARAPET DETAIL  
1/2" = 1'-0"



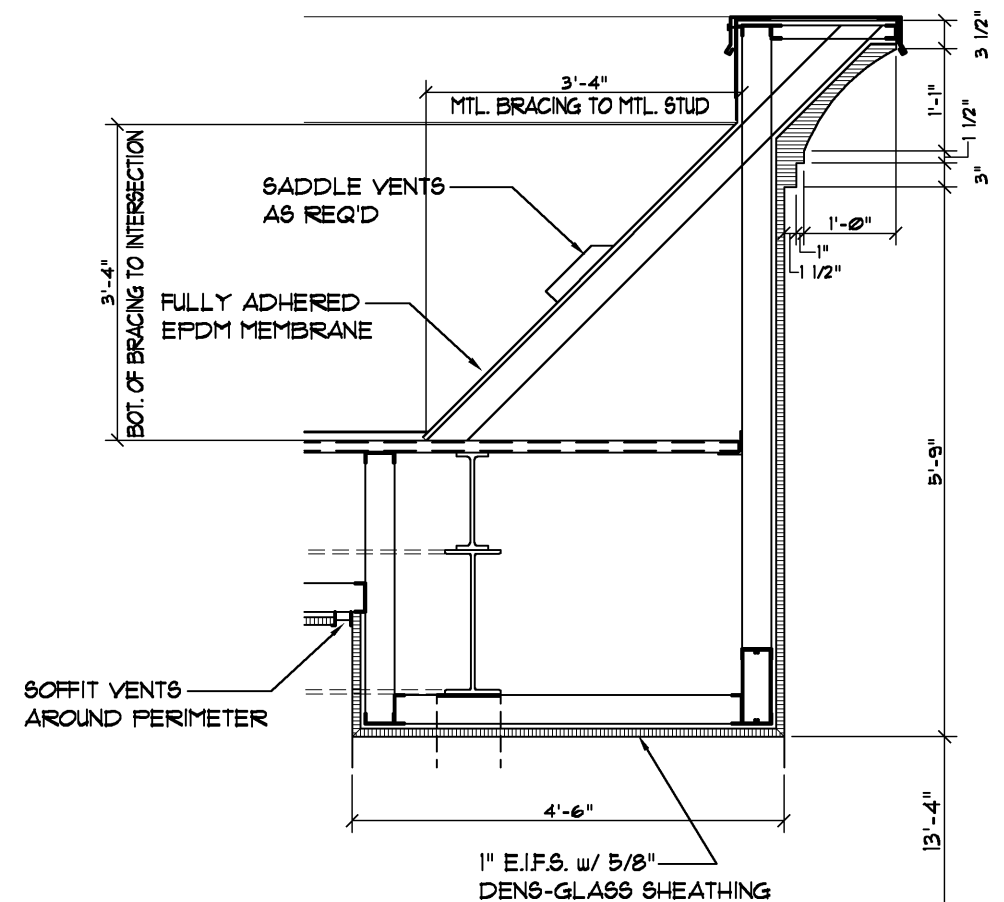
4 LOW PARAPET DETAIL  
1/2" = 1'-0"



5 SCUPPER DETAIL  
1/2" = 1'-0"



6 PARAPET RETURN DETAIL  
1/2" = 1'-0"



7 CANOPY PARAPET DETAIL  
1/2" = 1'-0"