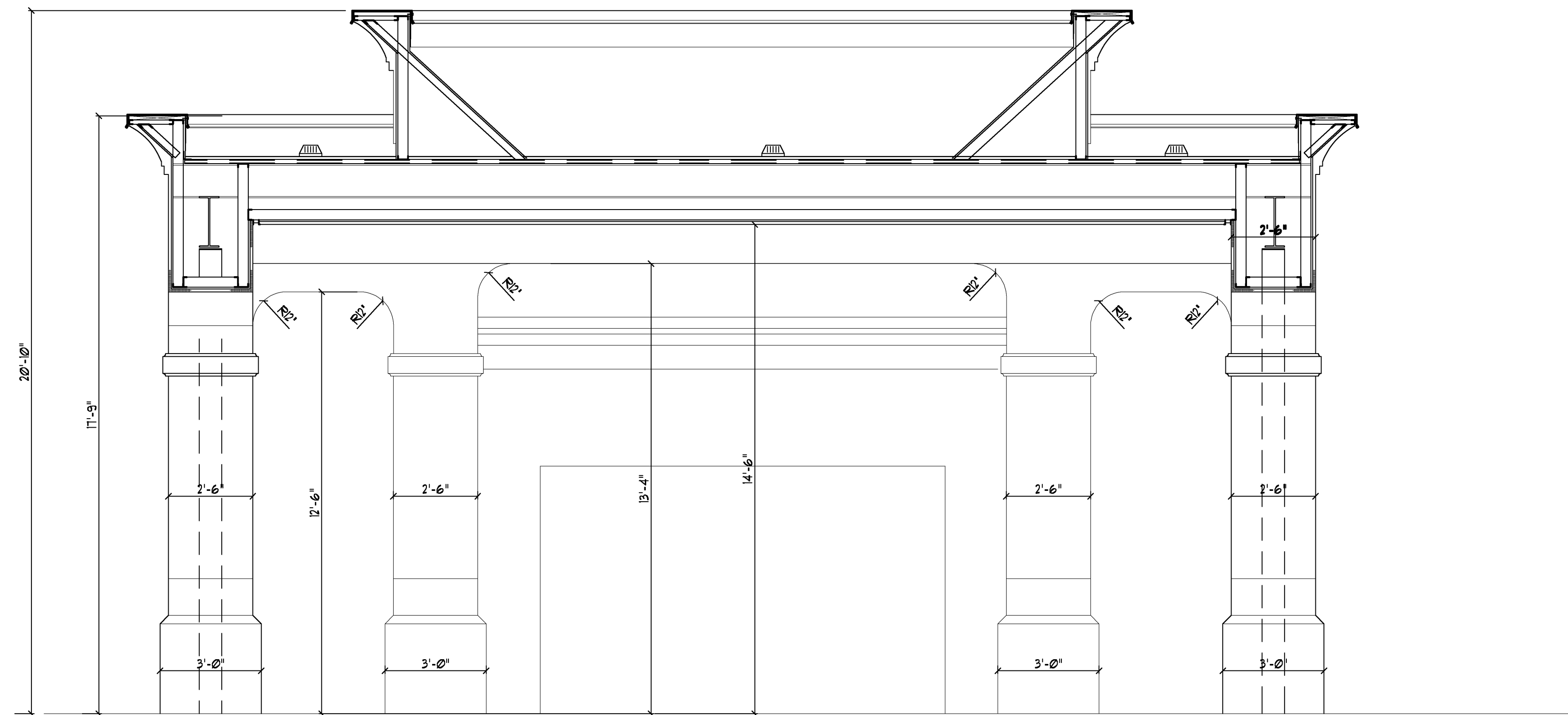
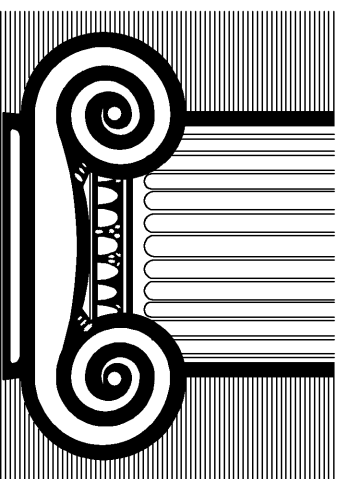


1 PORTE-COCHERE CANOPY SECTION
3/8" = 1'-0"



2 PORTE-COCHERE CANOPY SECTION
3/8" = 1'-0"

RICHARD F. STELDT
ARCHITECT
N85 W10056 APPLETON AVE., MENOMONEE FALLS, WI 53051
(262) 502-4500



Drawn: AAP/SEB

Approved:

2-23-08
NO CHANGE

date comments

REVISIONS

Job: 2232-1107

Date: 12-07-07

98 UNITS
Hampton Inn.
FLOWOOD, MS

Sheet

A-24

RICHARD F. STELDT & ASSOCIATES, LTD. ARCHITECTS
OWNERSHIP OF DOCUMENTS
This document, and the ideas and designs incorporated herein, as an instrument of professional service, is the property of Richard F. Steldt and Associates, Ltd. and is not to be used in whole or in part, for any other project without the written authorization of Richard F. Steldt and Associates, Ltd.