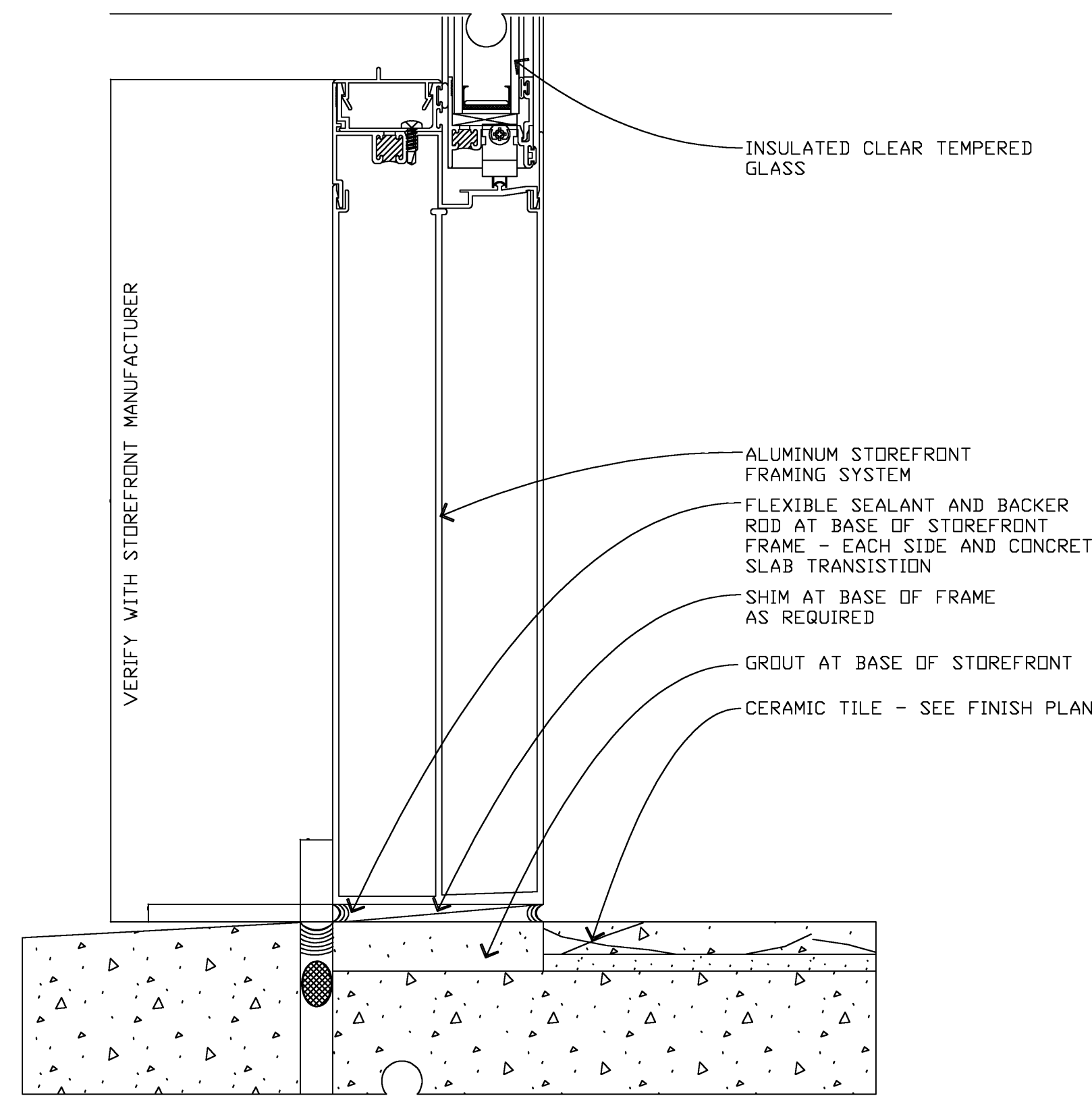
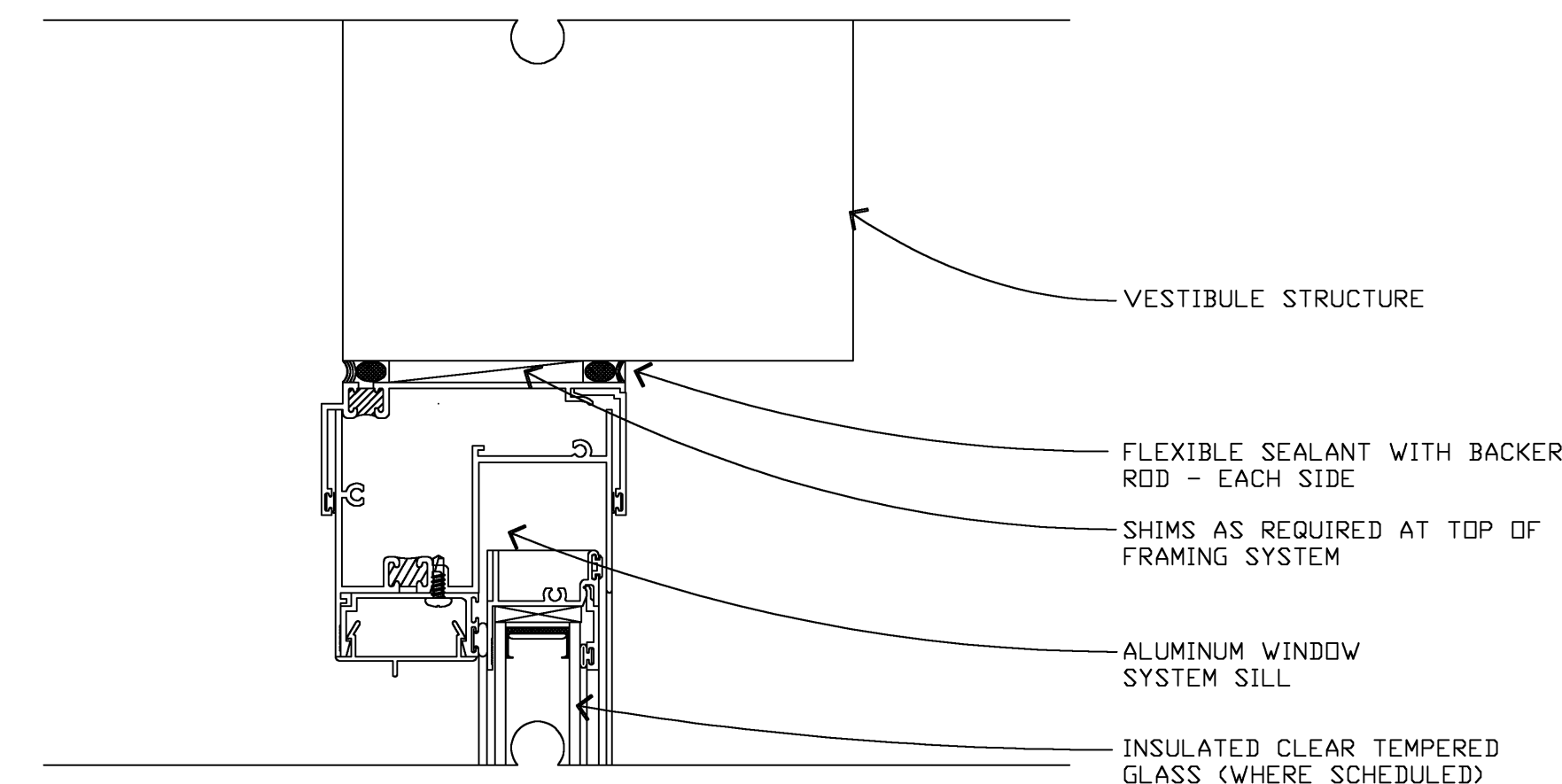


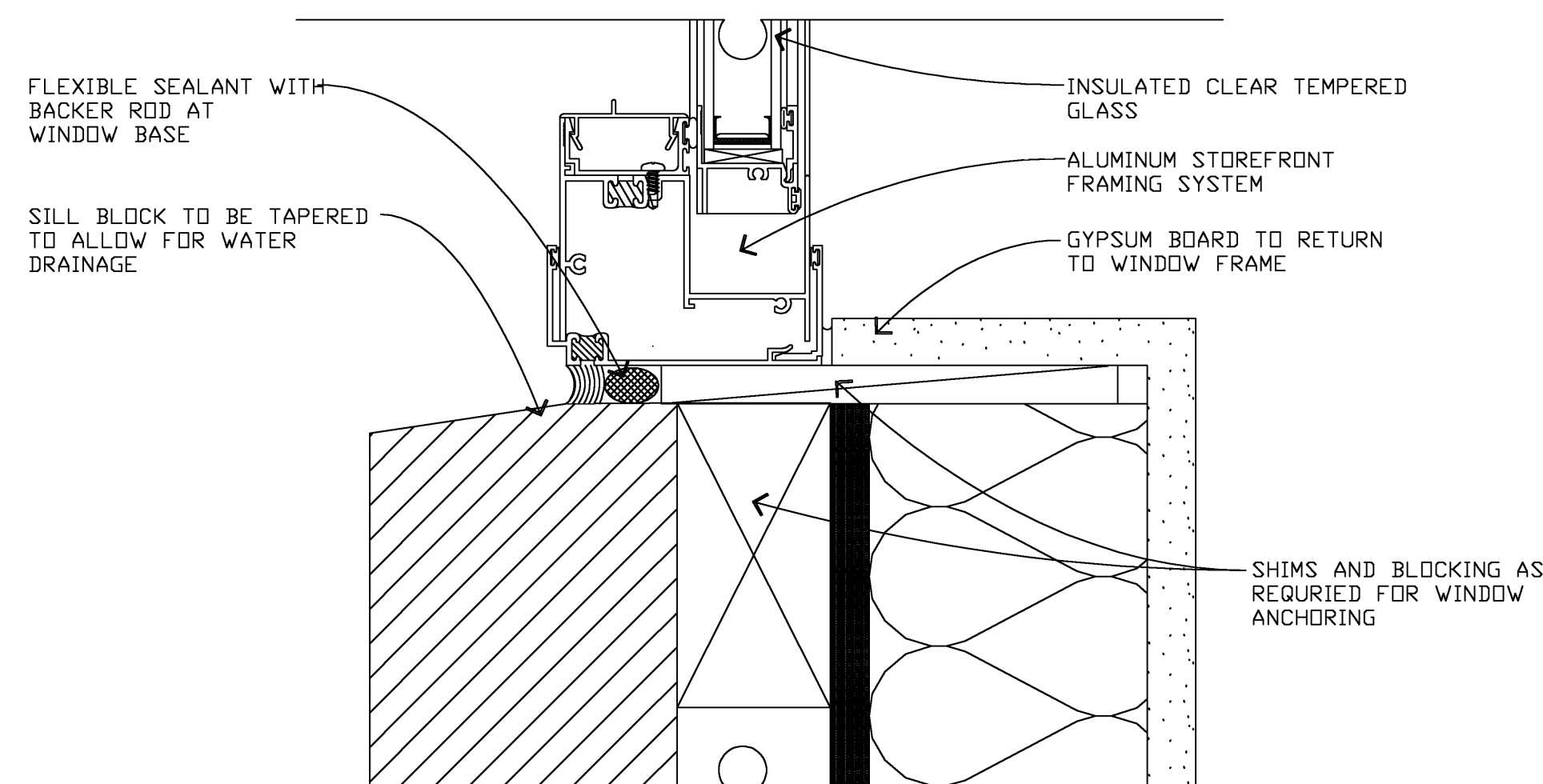
RICHARD F. STELDT & ASSOCIATES, LTD. ARCHITECTS
 OWNERSHIP OF DOCUMENTS
 This document, and the ideas and designs incorporated herein, as an instrument of professional service, is the property of Richard F. Steldt and Associates, Ltd. and is not to be used in whole or in part, for any other project without the written authorization of Richard F. Steldt and Associates, Ltd.



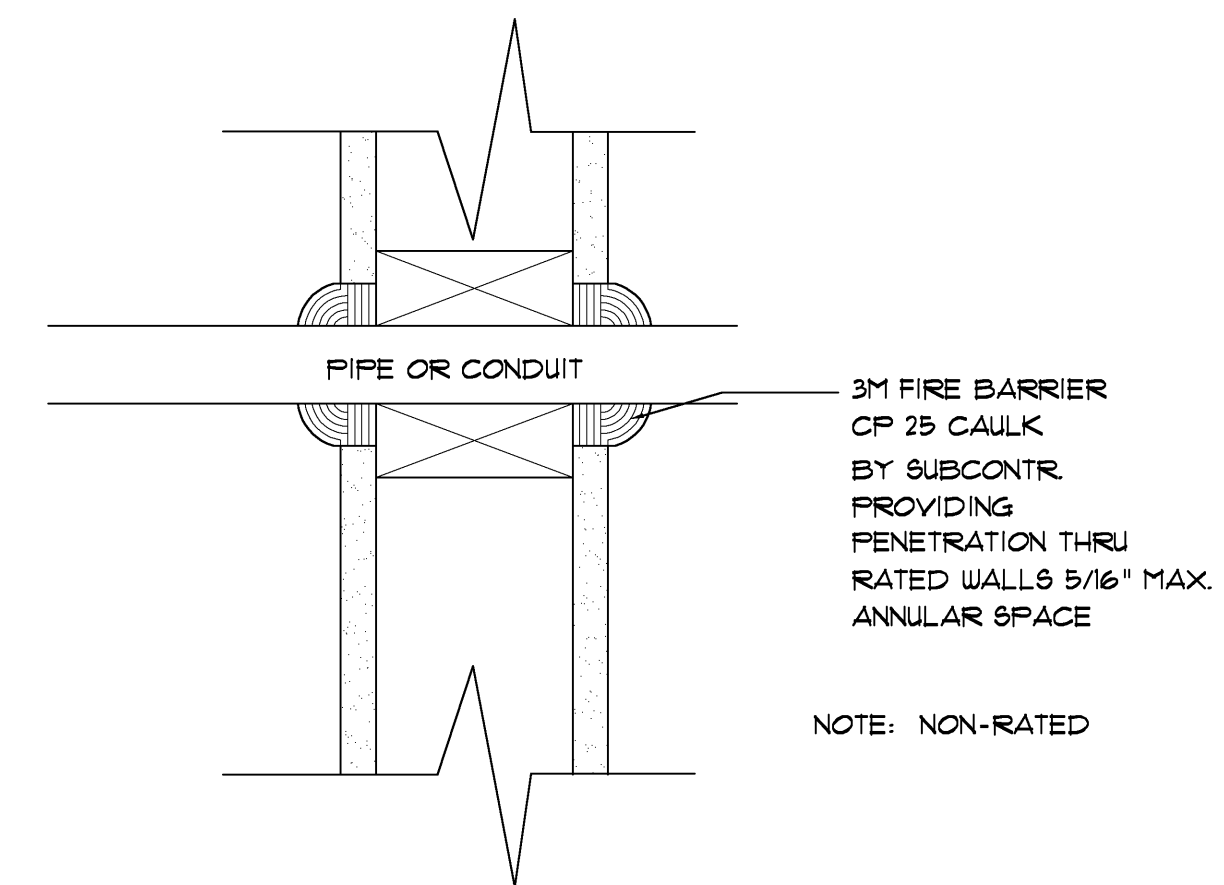
1 SILL AT STOREFRONT
A37 HALF SCALE



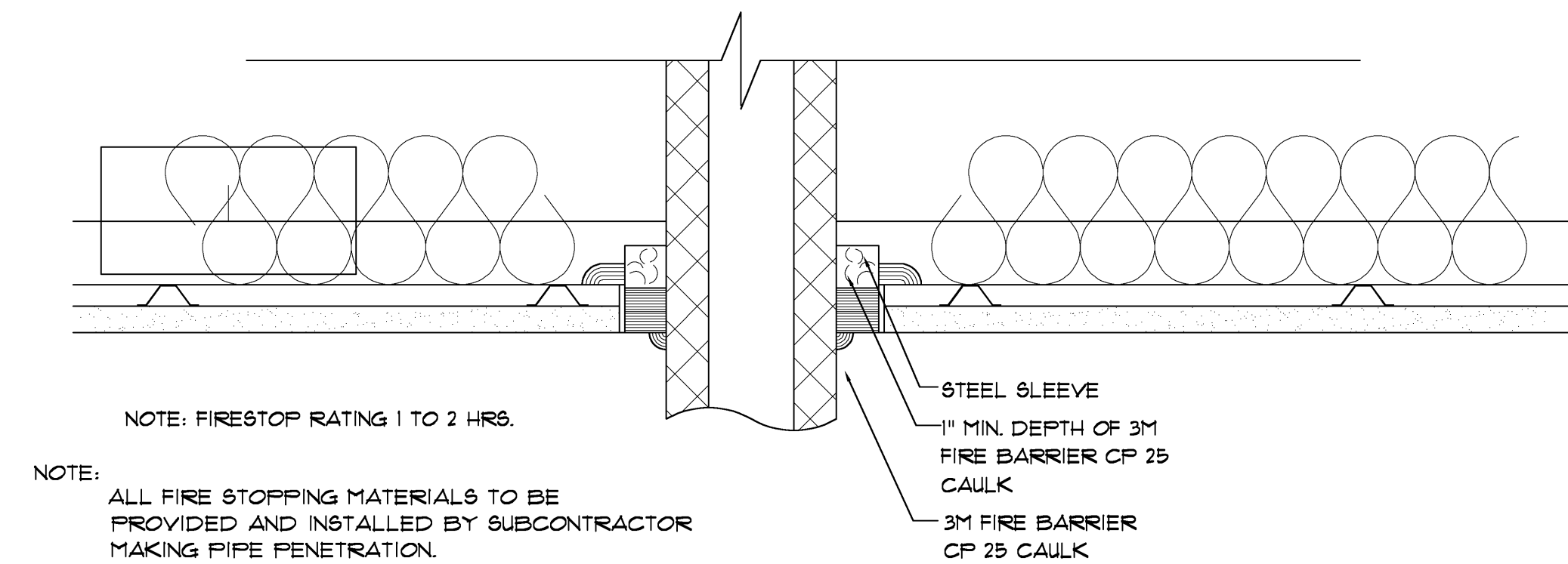
2 HEAD AT VENEER WALL
A37 HALF SCALE



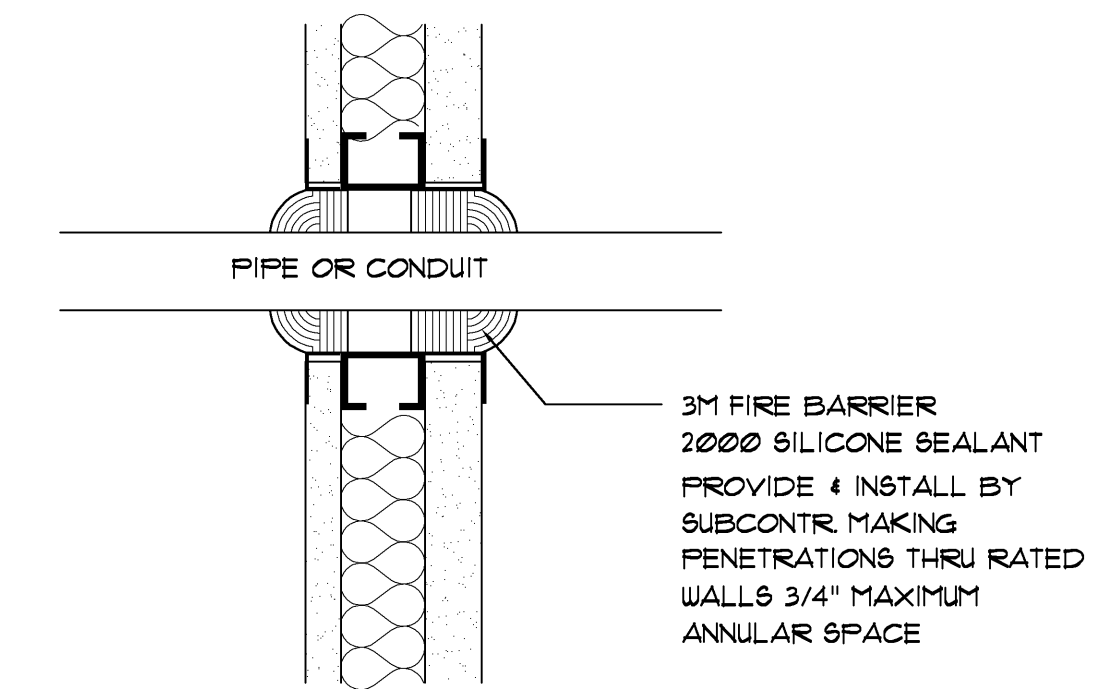
3 SILL @ VENEER WALL
A37 HALF SCALE



FIRESTOP PENETRATION DETAIL @ WALLS

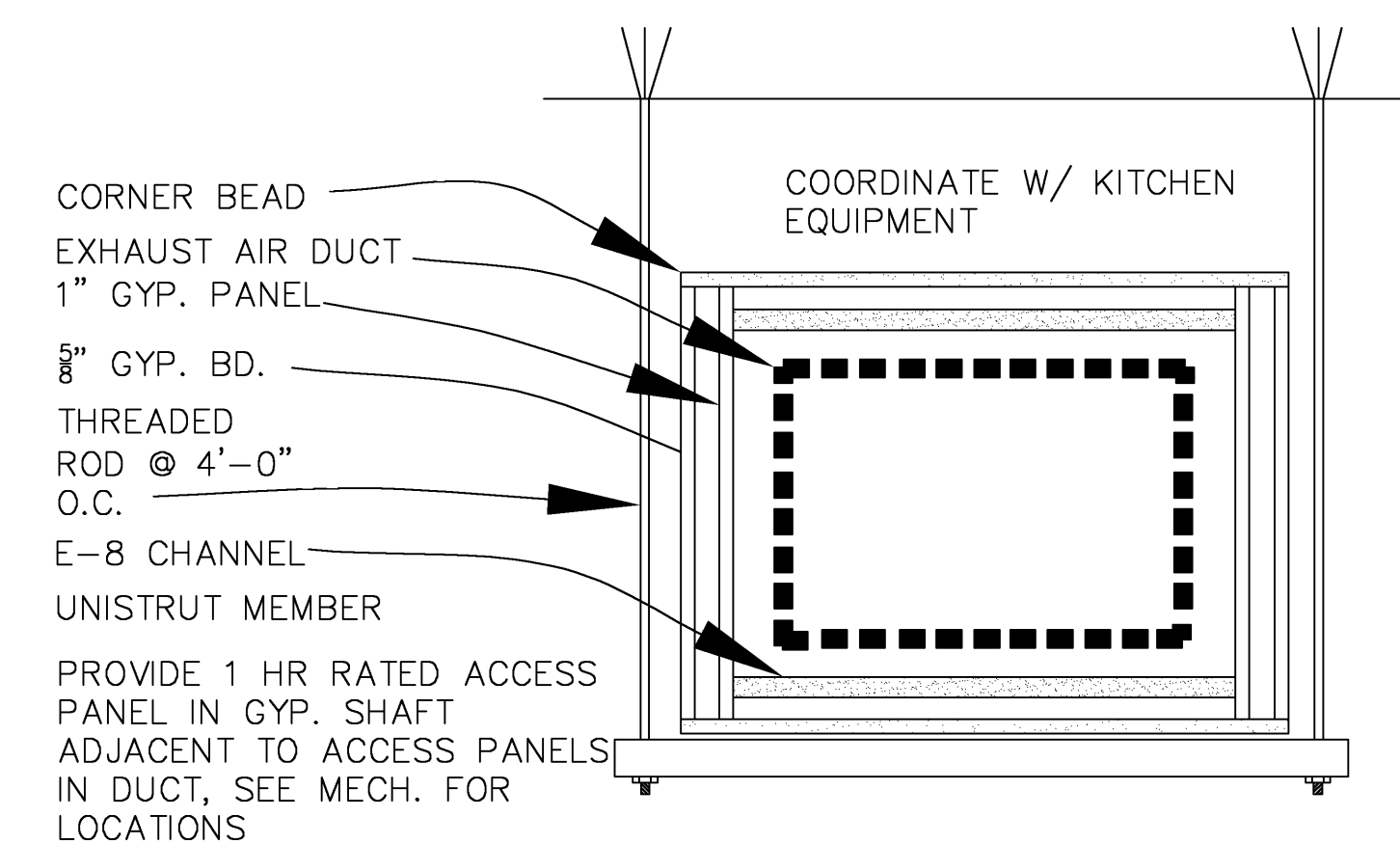


FIRESTOP PENETRATION DETAIL @ FLOOR



FIRESTOP PENETRATION DETAIL @ WALLS

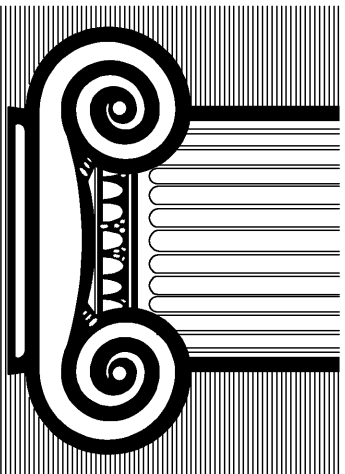
5 FIRESTOP PENETRATION DETAILS
A37 NTS



4 HORIZONTAL SHAFT ENCLOSURE DETAIL
A37 NTS

RICHARD F. STELDT
ARCHITECT

(262) 502-4500
 N85 W16056 APPLETON AVE., MENOMONEE FALLS, WI 53051



Drawn: AAP

Approved:

2-23-09
NO CHANGE

date comments

REVISIONS

Job: 2232-1107

Date: 12-07-07

Hampton Inn.
 98 UNITS
 FLOOD, MS

Sheet

A-37