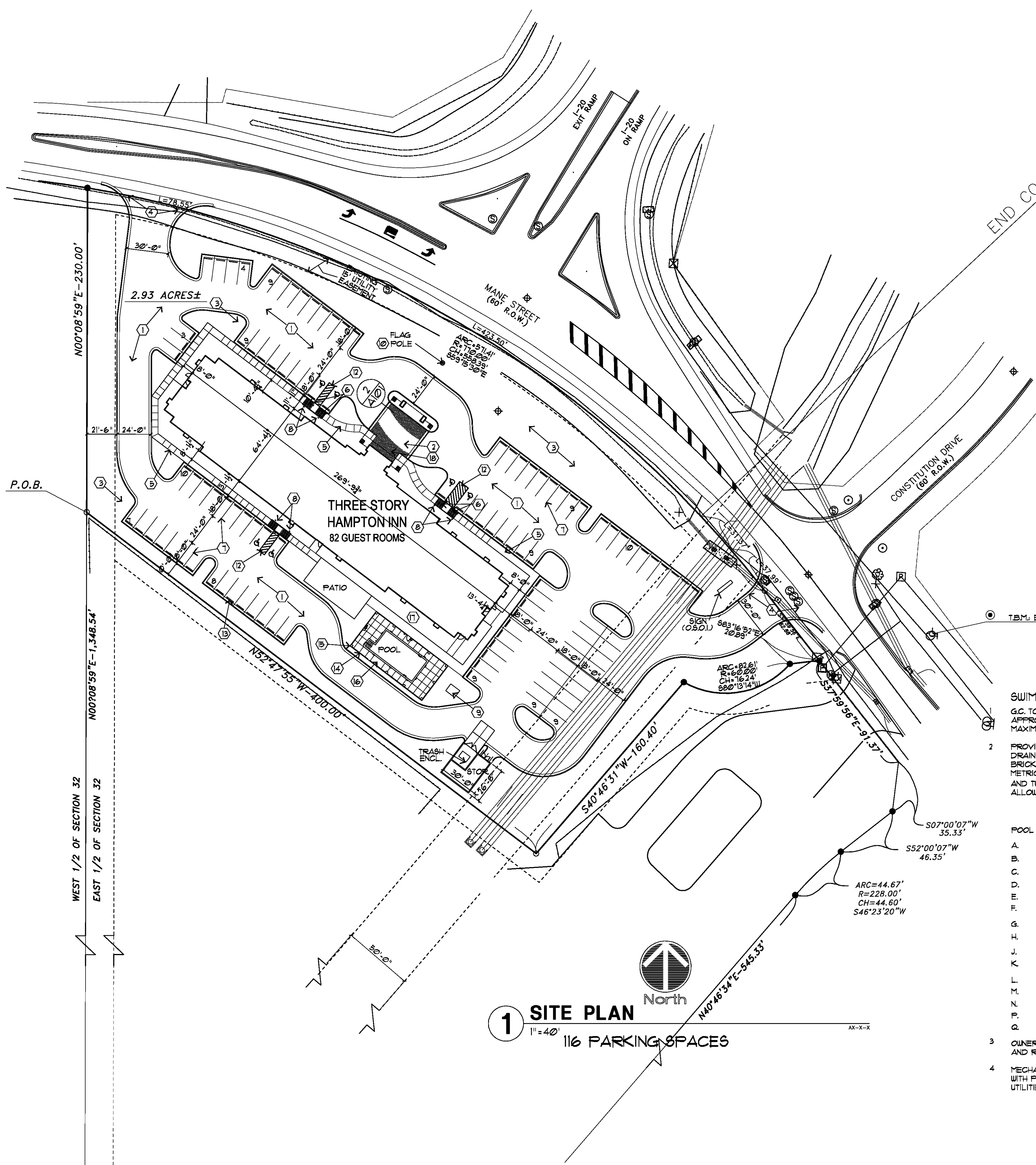
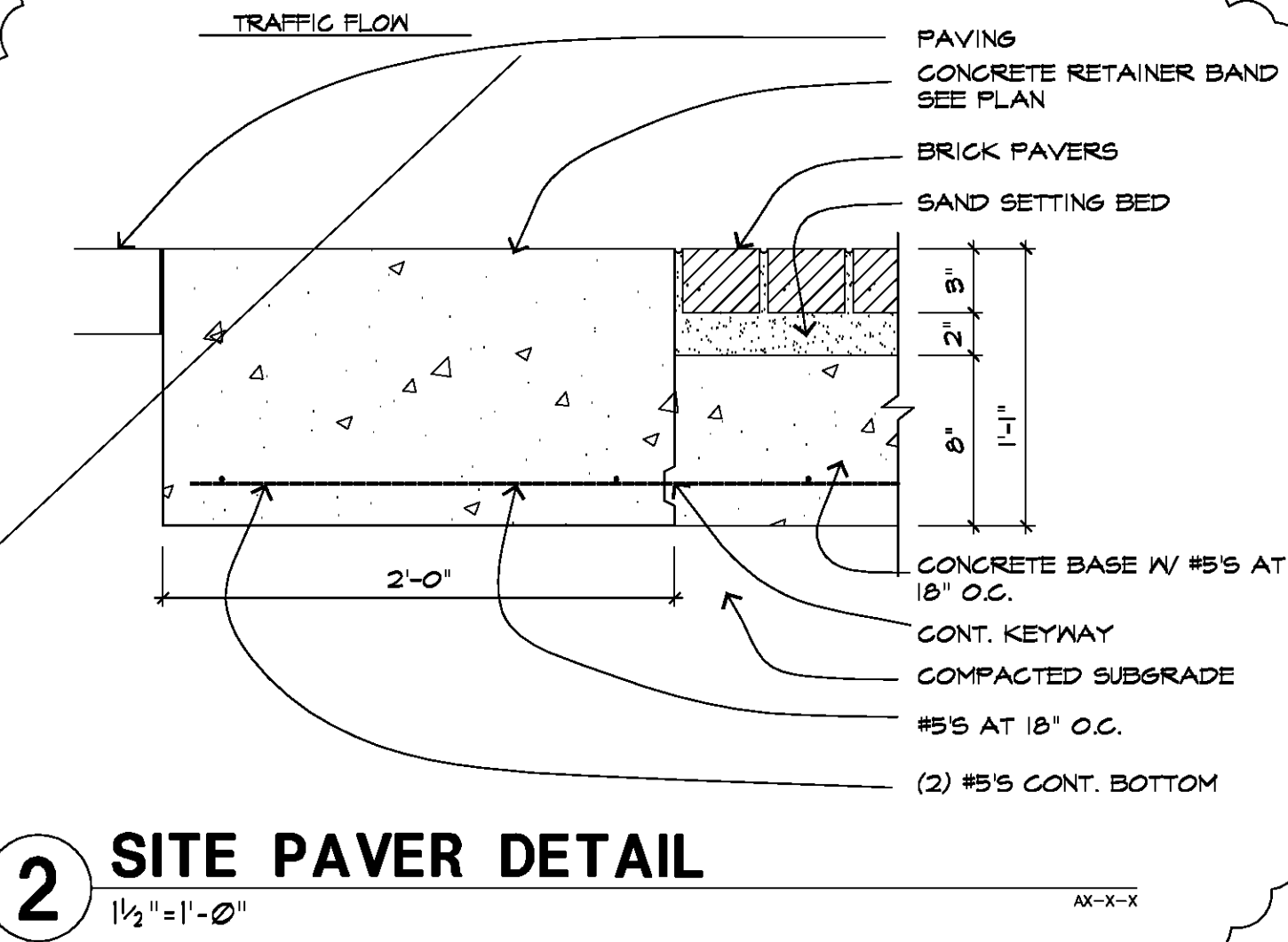


BEGIN COA

END COA



1 SITE PLAN
1" = 40'
116 PARKING SPACES



2 SITE PAVER DETAIL
1/2" = 1'-0"

SITE KEYNOTES

- ASPHALT VEHICULAR PAVEMENT. PERIMETER TO HAVE CONCRETE CURB, SEE CIVIL ENGR. DETAILS.
- PRE-CAST CONC. PAVERS ON SAND SETTING BED ON REINFORCED CONCRETE SLAB, PATTERN AND COLOUR AS SELECTED BY OWNER.
- PROVIDE COMPLETE LANDSCAPE AND IRRIGATION SYSTEM UNDER A LUMP SUM ALLOWANCE OF \$25,000.00.
- DRIVEWAY CURB CUT PER CITY STANDARDS.
- CONCRETE SIDEWALK, SEE CIVIL ENGR. DETAILS.
- CONCRETE CURB RAMP WITH SLIP RESISTANT FINISH IN ACCORDANCE WITH ADA (ADA ACCESSIBILITY GUIDELINES) 4.1. RUNNING SLOPE SHALL NOT EXCEED 1 IN 12.
- 4" WIDE WHITE PAINTED LINES.
- HANDICAP PARKING SIGN IN ACCORDANCE WITH ADA 4.6.4.
- CONCRETE PAD FOR TRANSFORMER. VERIFY SIZE.
- 25' TALL (ABOVE GRADE) FLAGPOLE. PROVIDE CONCRETE BASE AS RECOMMENDED BY MFR. SEE DETAIL.
- HC ACCESSIBLE ROUTE SHALL NOT EXCEED 5% ALONG THE RUNNING SLOPE. NOWHERE SHALL THE CROSS SLOPE OF AN ACCESSIBLE ROUTE EXCEED 2% (1/4" PER FT.).
- ACCESSIBLE AISLE PROVIDED ON PAVEMENT SURFACE WITH 4" WIDE DIAGONAL WHITE PAINTED LINES @ 24" O.C. MAX.
- PAVEMENT SLOPES IN ANY DIRECTION AT HC PARKING STALLS AND ADJACENT ACCESSIBLE AISLES SHALL NOT EXCEED 2% (ADA 4.6.3).
- PROVIDE PRECAST CONC. WHEEL STOP DOUELLED PROPERLY TO PAVEMENT AT ALL PARKING STALLS AS SHOWN.
- POOL RAILING. SEE SITE DETAILS.
- POOL RAILING POST. SEE SITE DETAILS.
- 4" CONC. POOL DECK WITH NON-SLIP FINISH AS SELECTED BY OWNER. PROVIDE JOINTS TO MINIMIZE CRACKING.
- 3' HIGH CMU SCREEN WALL WITH EIFS FINISH, TYPICAL @ ALL PAD MOUNTED COND. UNITS.
- PROVIDE ACCESS AISLE 5' WIDE x 20' LONG ADJACENT & PARALLEL TO VEHICLE FULL-UP SPACE, NOT TO EXCEED 25 SLOPE IN ANY DIRECTION.

NOTES:

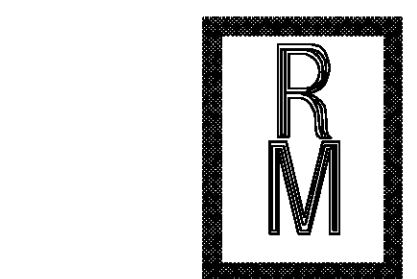
- CONSTRUCT ASPHALT AND CONCRETE VEHICULAR PAVEMENTS AND SUB-GRADES IN ACCORDANCE WITH SOILS ENGINEER'S RECOMMENDATIONS (FURNISHED BY OWNER).
- CONSTRUCT A LOCALLY STANDARD 30" HIGH CONCRETE BASE FOR EACH AREA POLE LIGHT FIXTURE. SEE UTILITY SITE PLAN FOR LOCATIONS.
- REFERENCE CIVIL ENGINEER'S DRAWINGS FOR LOCATION(S) OF HEAVY DUTY PAVEMENT AND CONCRETE PAVING AT TRASH STORAGE AREA.
- PROVIDE IRRIGATION SLEEVES AS DIRECTED BY OWNER (REF. CIVIL DUGS).

SWIMMING POOL

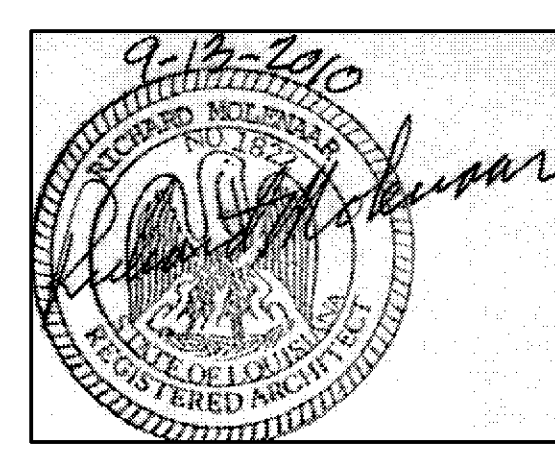
- G.C. TO PROVIDE SHOP DRAWINGS AND OBTAIN ALL APPROVALS FOR THE SWIMMING POOL. MAXIMUM SWIMMING POOL DEPTH TO BE 5'.
- PROVIDE A COMPLETE INSTALLATION INCLUDING DECK, DRAIN SYSTEMS, CONCRETE POOL SHELLS, POOL EQUIPMENT, BRICK COPIING, UNDERWATER LIGHTING, DEPTHS INDICATED IN METRIC AND ENGLISH ON TOP AND SIDE OF SWIMMING POOL EDGE, AND TWO (2) CHROME PLATED METAL LADDERS UNDER AN ALLOWANCE OF SIXTY THOUSAND DOLLARS (\$60,000.00 US).

POOL SHALL ALSO INCLUDE THE FOLLOWING:

- CONCRETE STEPS.
 - LARGE POOL LIGHT IN DEEP END.
 - 2 SKIMMERS.
 - THREE (3) RETURNS.
 - WATER MIZER (SELF LEVELER).
 - VAC LINE.
 - TWO (2) MAIN DRAINS.
 - 1 1/2 HP MIN. PUMP.
 - 3/4" FILTER.
 - 2" IN-LINE CHLORINATOR.
 - OVERFLOW LINE.
 - STEP BORDER TILE AND ROPE LINE TILE.
 - ALL ANCHORS ARE BRASS.
 - ROPE WITH FLOATS AND ANCHORS IN WALLS.
 - THROW RING WITH ROPE AND MAINTENANCE EQUIPMENT.
- OWNER WILL PROVIDE LIFE SAFETY DEVICES, DECK FURNITURE AND RULES SIGN(S) TO BE INSTALLED BY G.C.
 - MECHANICAL AND ELECTRICAL CONTRACTORS SHALL CONFER WITH POOL CONTRACTOR AND PROVIDE ALL REQUIRED UTILITIES FOR THE EXTERIOR SWIMMING POOL.



Richard Molenaar
ARCHITECT



PROJECT NAME:
Hampton Inn
Main Street
West Monroe, Louisiana

SHEET TITLE:

PROJECT NO. 09017
LATEST REVISION: 1

DRAWN BY: CHECKED BY: SHEET NUMBER:

DATE: 9/13/10
A101