

Richard Molenaar

ARCHITECT

KEY

- (A) TEXTURED ACRYLIC BASED SPLATTER KNOCK-DOWN ON GYP. BD.
- (B) PAINTED GYP. BD. CEILING / SOFFIT
- (C) UNFINISHED CEILING/STRUCTURE
- SUSP. ACOUSTICAL CEILING
- RECESSED LIGHT FIXTURE WALL WASH
- RECESSED LIGHT FIXTURE
- CEILING MOUNTED PENDANT LIGHT FIXTURE
- WALL FIXTURE
- EXIT LIGHT, WALL MOUNTED
- EXIT LIGHT, CEILING MOUNTED
- SMOKE DETECTOR
- 24"x24" FLUORESCENT LIGHT FIXTURE
- 24"x48" 4-LAMP FLUORESCENT LIGHT FIXTURE
- 12"x48" 2-LAMP FLUORESCENT LIGHT FIXTURE
- FLUORESCENT STRIP LIGHT FIXTURE
- 16"x16" METAL HALIDE LIGHT FIXTURE
- EXHAUST AIR REGISTER
- SUPPLY AIR VENT
- SUPPLY AIR SLOT DIFFUSER
- RETURN AIR VENT
- CONCEALED SPRINKLER HEAD
- CEILING FAN
- CEILING OR SOFFIT ELEVATION ABOVE FINISH FLOOR

PROJECT NAME:

Hampton Inn

Mane Street
West Monroe, Louisiana

SHEET TITLE:

PROJECT NO.
09017

LATEST REVISION:

DRAWN BY:

CJ

CHECKED BY:

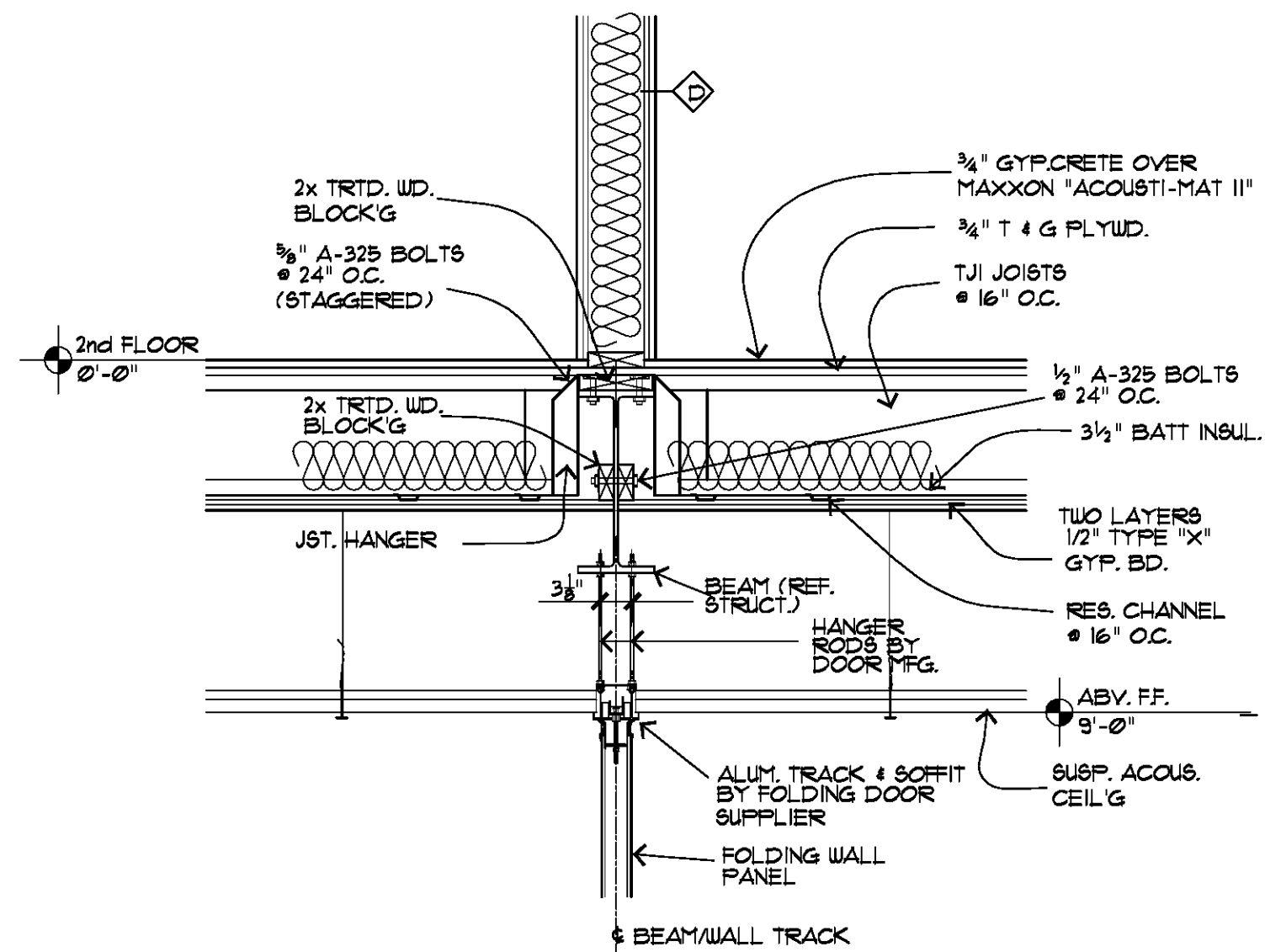
RM

SHEET NUMBER:

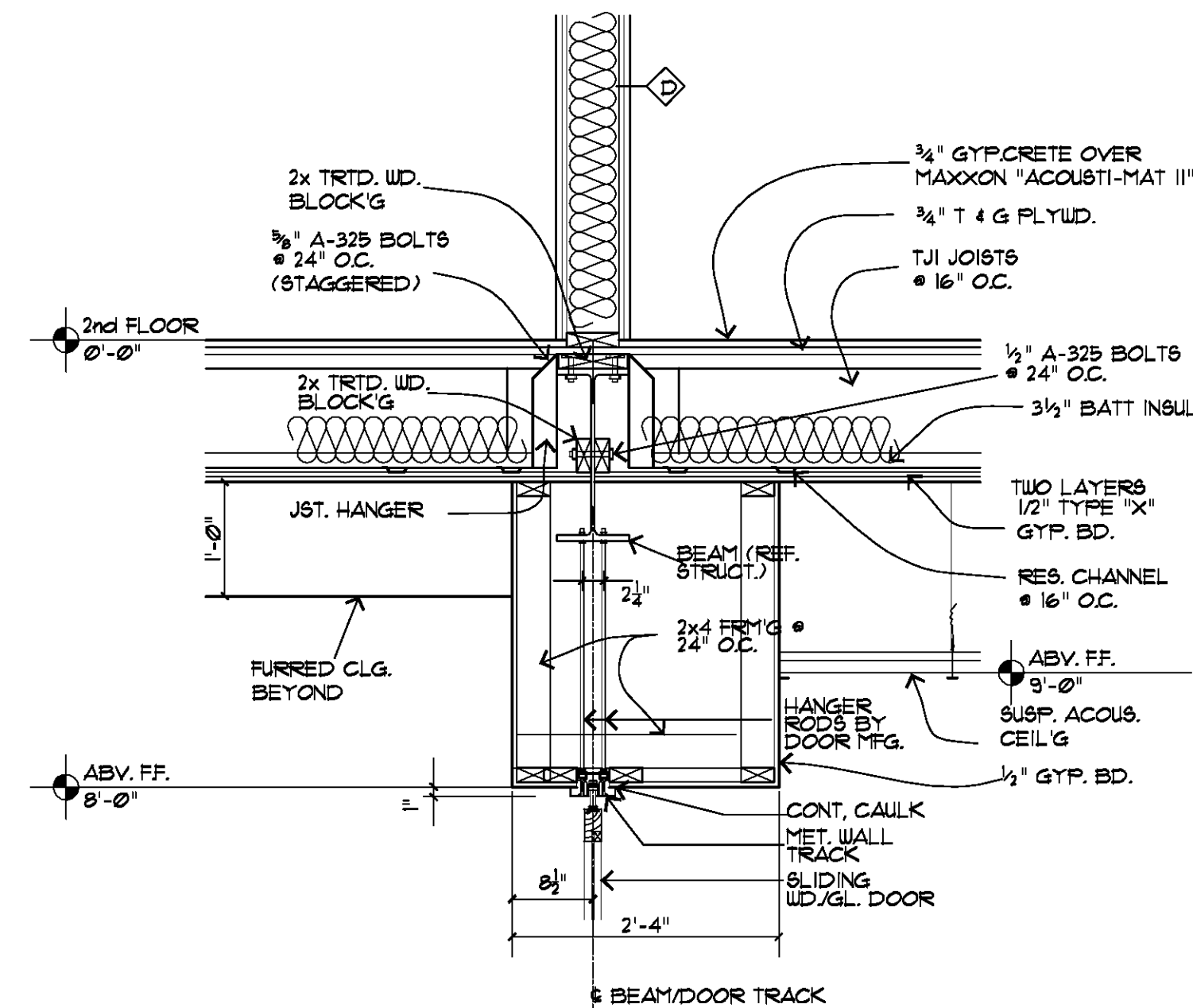
DATE:

9/13/10

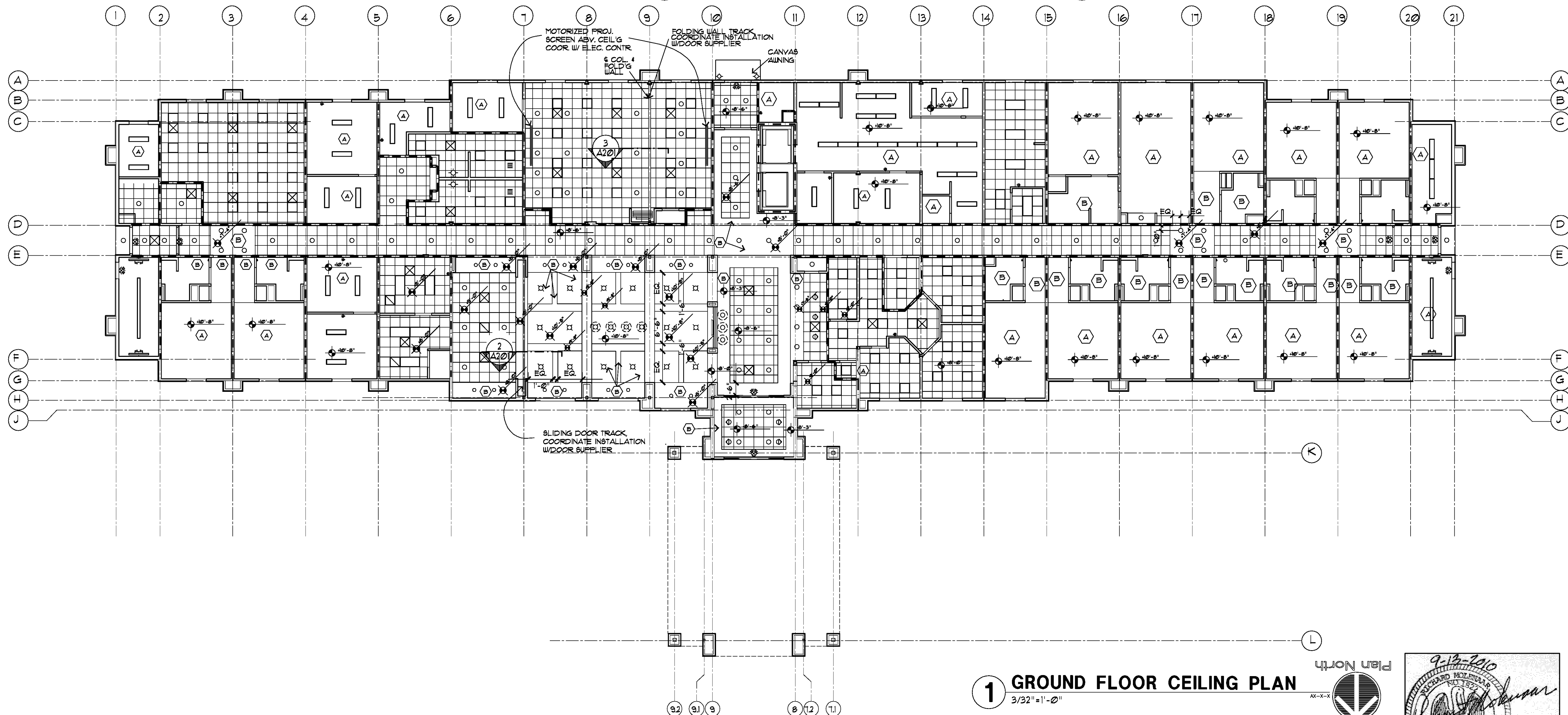
A201



3 HEAD OF FOLDING WALL DETAIL
3/4" = 1'-0"



2 HEAD OF SLIDING WALL DETAIL
3/4" = 1'-0"



1 GROUND FLOOR CEILING PLAN
3/32" = 1'-0"

