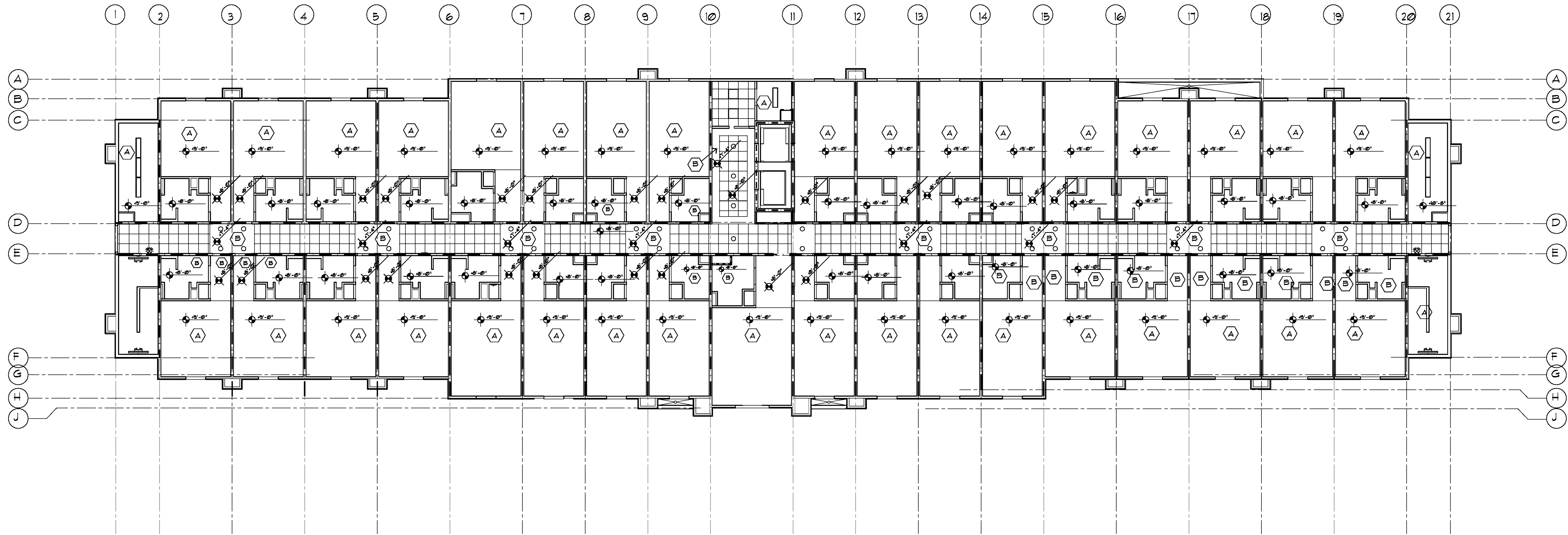


Richard Molenaar

ARCHITECT

KEY

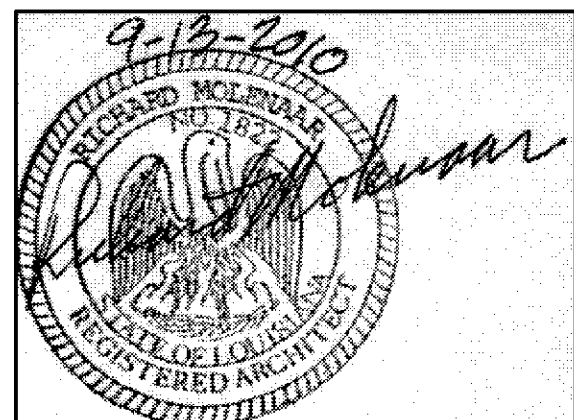
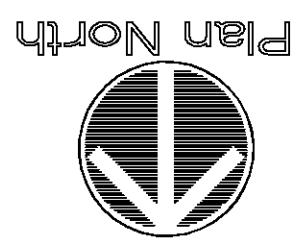
- SPRAY TEXTURE ON GYP. BD.
- PAINTED GYP. BD. CEILING / SOFFIT
- UNFINISHED CEILING/STRUCTURE
- SUSP. ACOUSTICAL CEILING
- RECESSED LIGHT FIXTURE WALL WASH
- RECESSED LIGHT FIXTURE
- CEILING MOUNTED PENDANT LIGHT FIXTURE
- WALL FIXTURE
- EXIT LIGHT, WALL MOUNTED
- EXIT LIGHT, CEILING MOUNTED
- SMOKE DETECTOR
- 24"x24" FLUORESCENT LIGHT FIXTURE
- 24"x48" 4-LAMP FLUORESCENT LIGHT FIXTURE
- 12"x48" 2-LAMP FLUORESCENT LIGHT FIXTURE
- FLUORESCENT STRIP LIGHT FIXTURE
- 16"x16" METAL HALIDE LIGHT FIXTURE
- EXHAUST AIR REGISTER
- SUPPLY AIR VENT
- SUPPLY AIR SLOT DIFFUSER
- RETURN AIR VENT
- CONCEALED SPRINKLER HEAD
- CEILING FAN
- CEILING OR SOFFIT ELEVATION ABOVE FINISH FLOOR



1 3rd FLOOR CEILING PLAN

3/32"=1'-0"

AX-X-X



PROJECT NAME:

Hampton Inn
Main Street
West Monroe, Louisiana

SHEET TITLE:

PROJECT NO.
09017

LATEST REVISION:

DRAWN BY:

CJ

CHECKED BY:

RM

SHEET NUMBER:

DATE:
9/13/10

A203