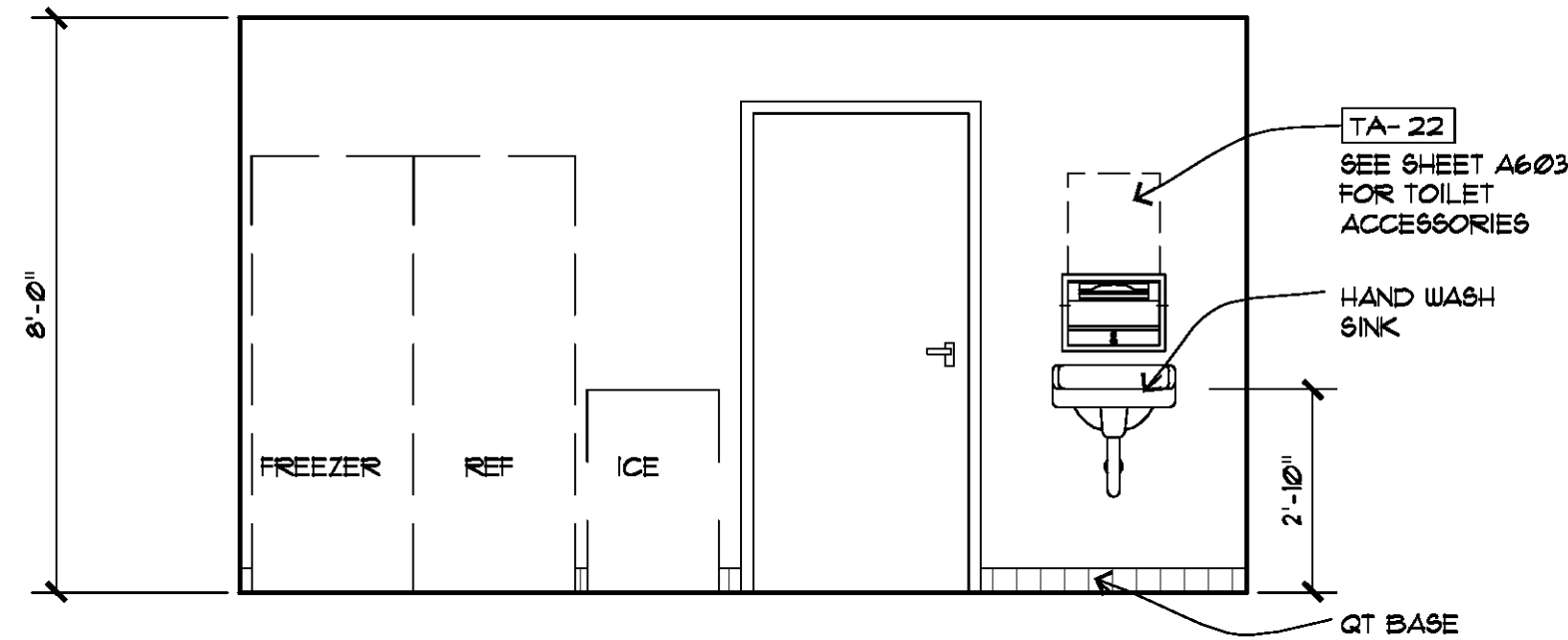
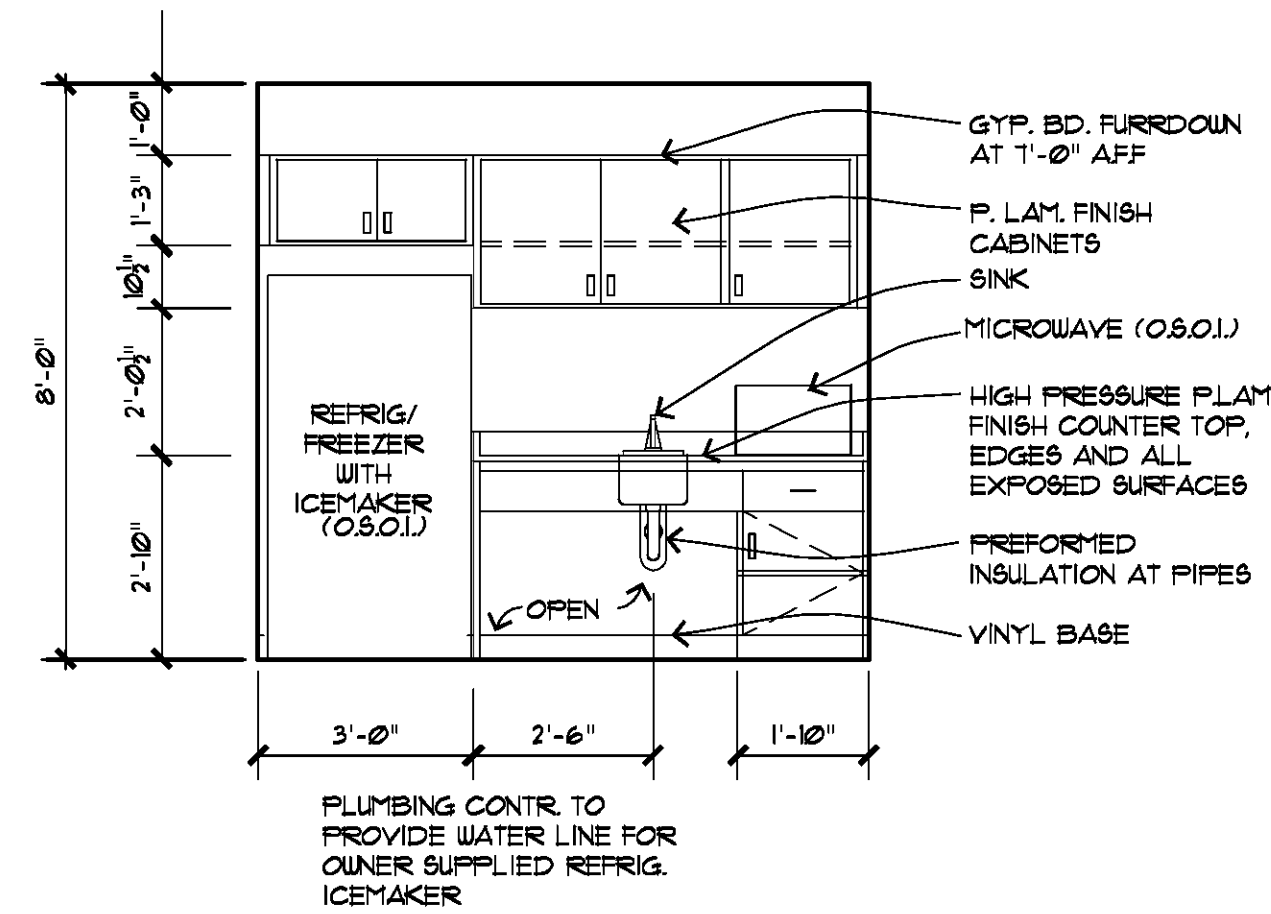


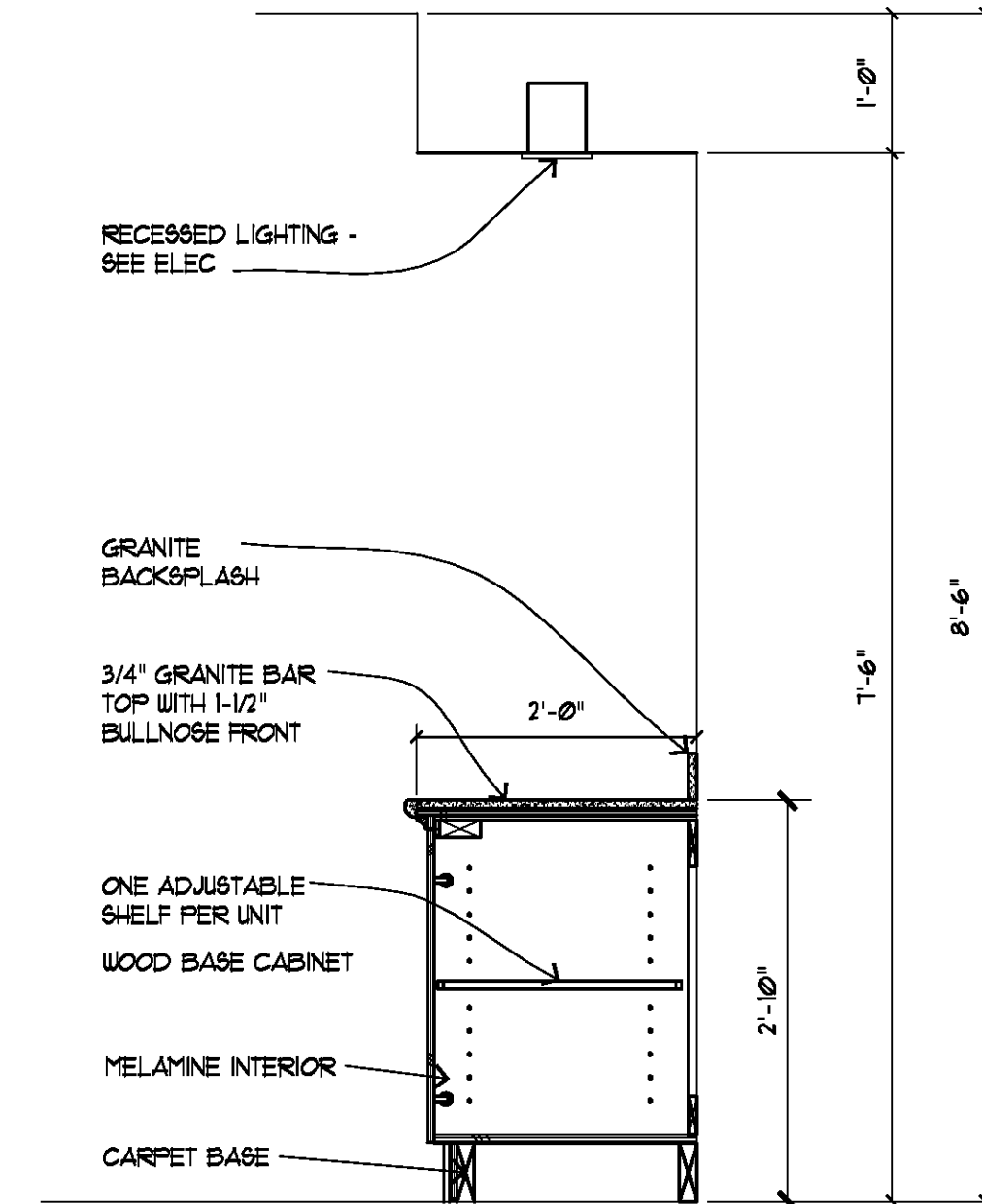
**1 FOOD PREP ELEVATION**  
3/8"=1'-0"



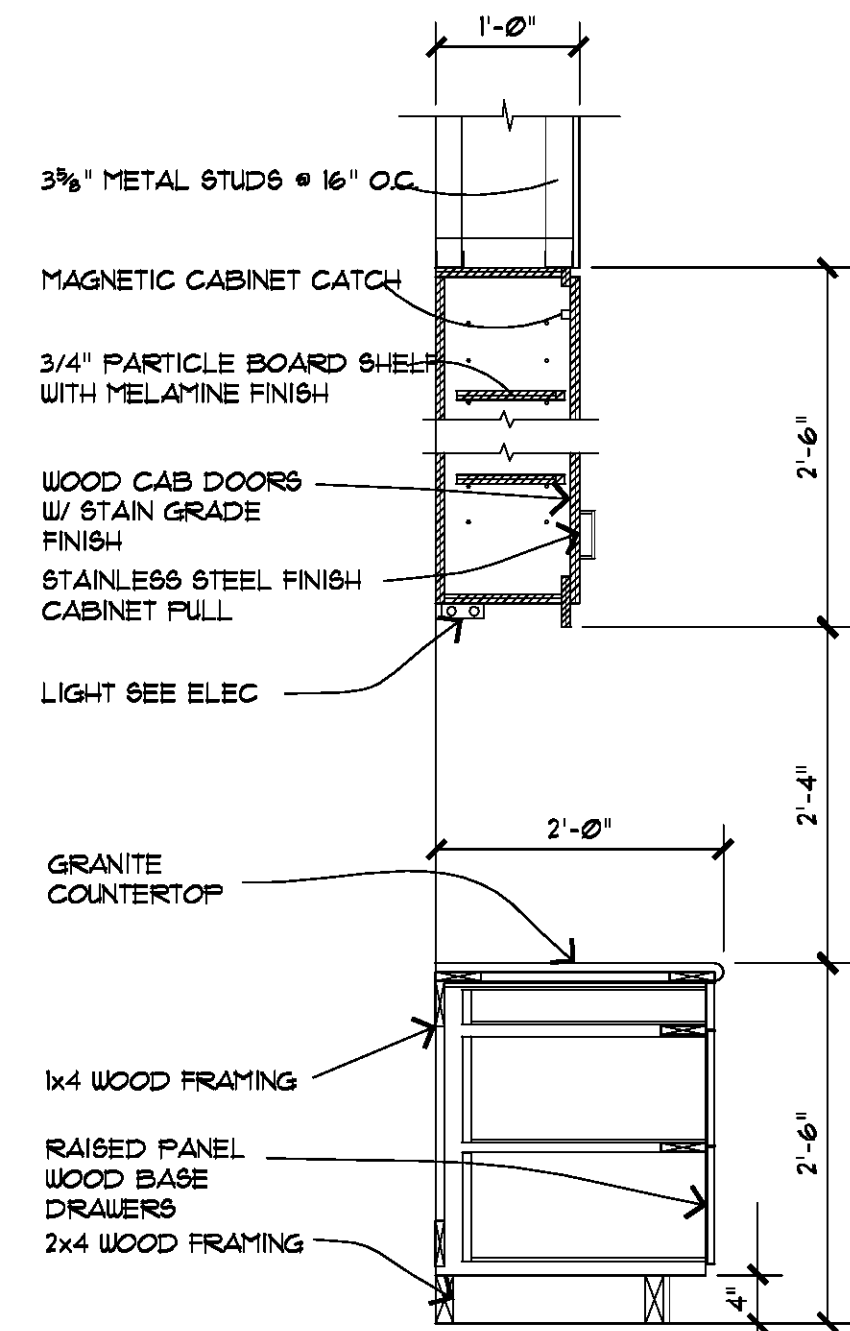
**2 FOOD PREP ELEVATION**  
3/8"=1'-0"



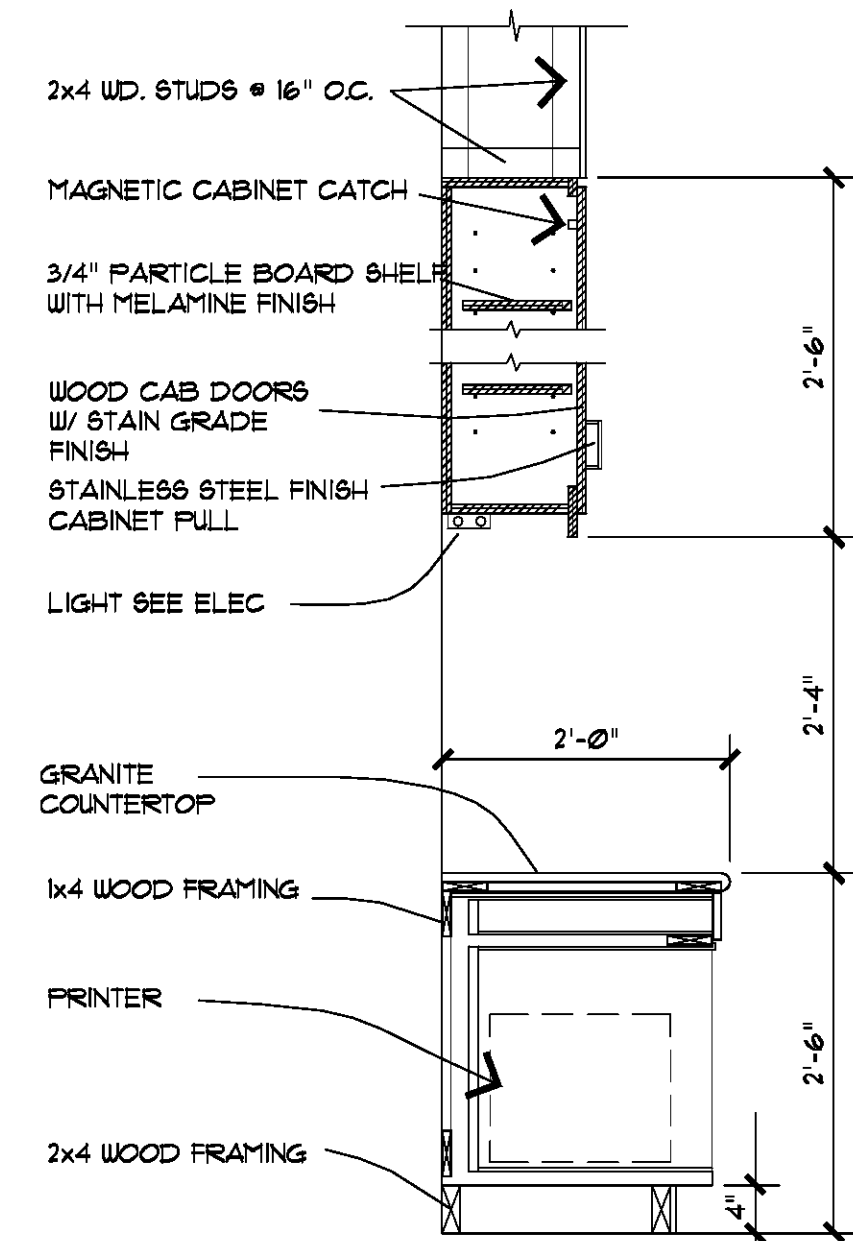
**3 EMPLOYEE LOUNGE**  
3/8"=1'-0"



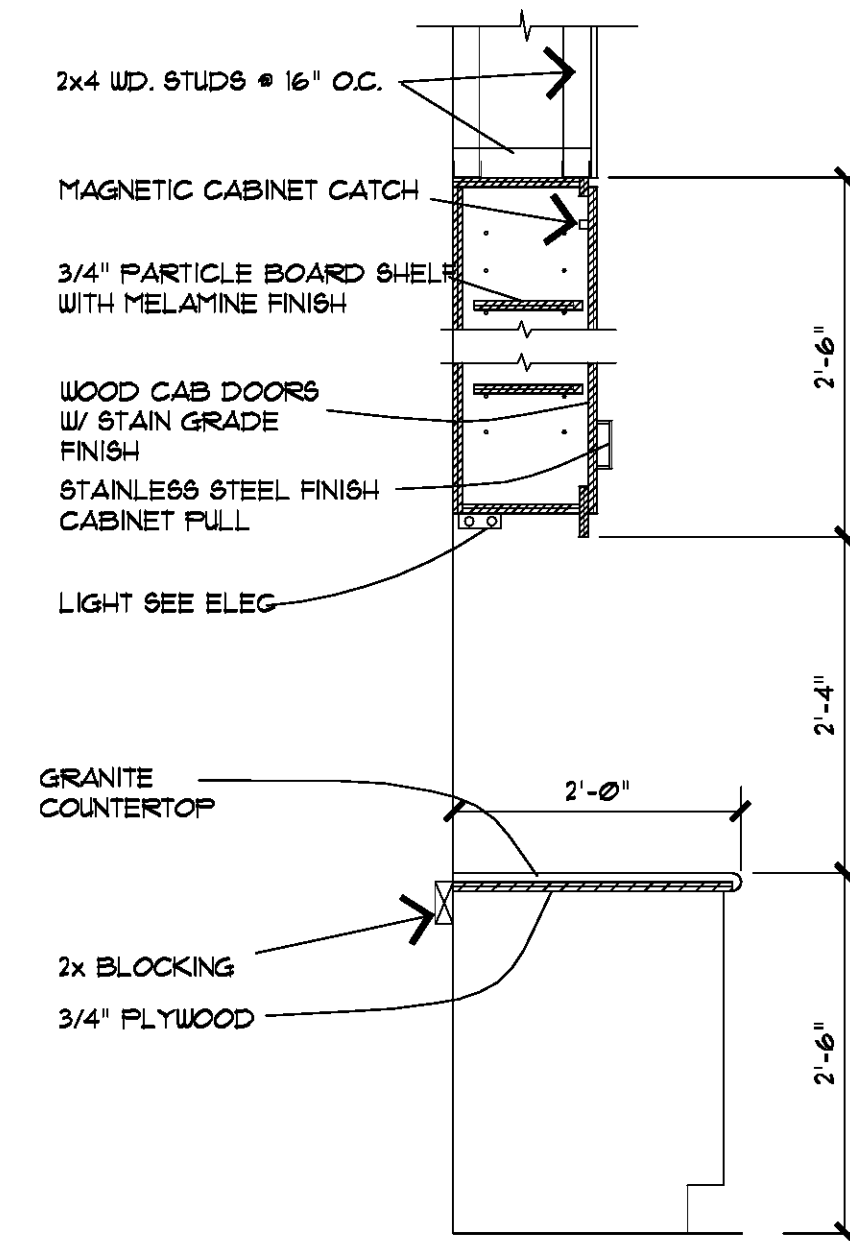
**4 MEETING ROOM SECTION**  
3/4"=1'-0"



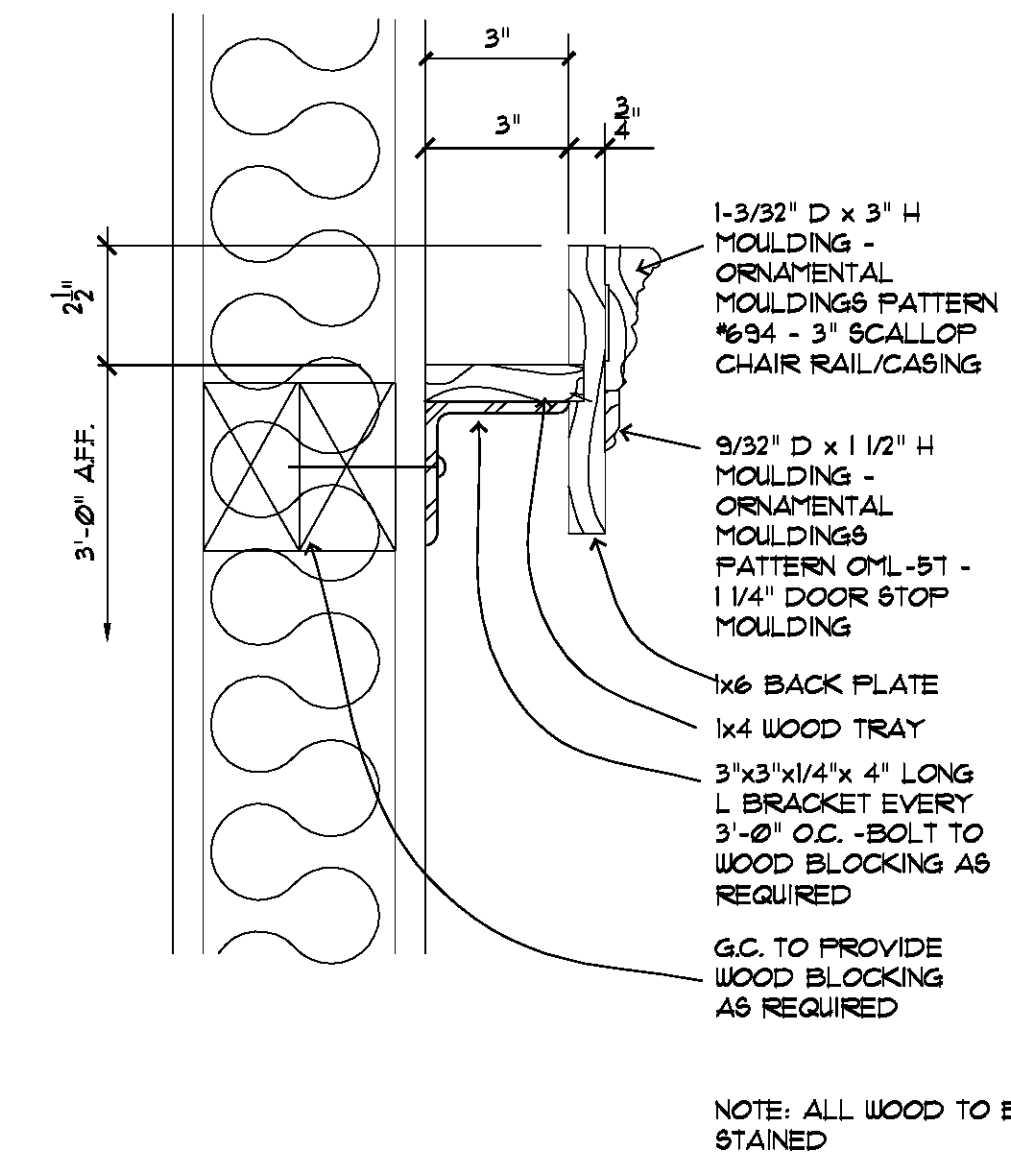
**5 BUSINESS CENTER**  
3/4"=1'-0"



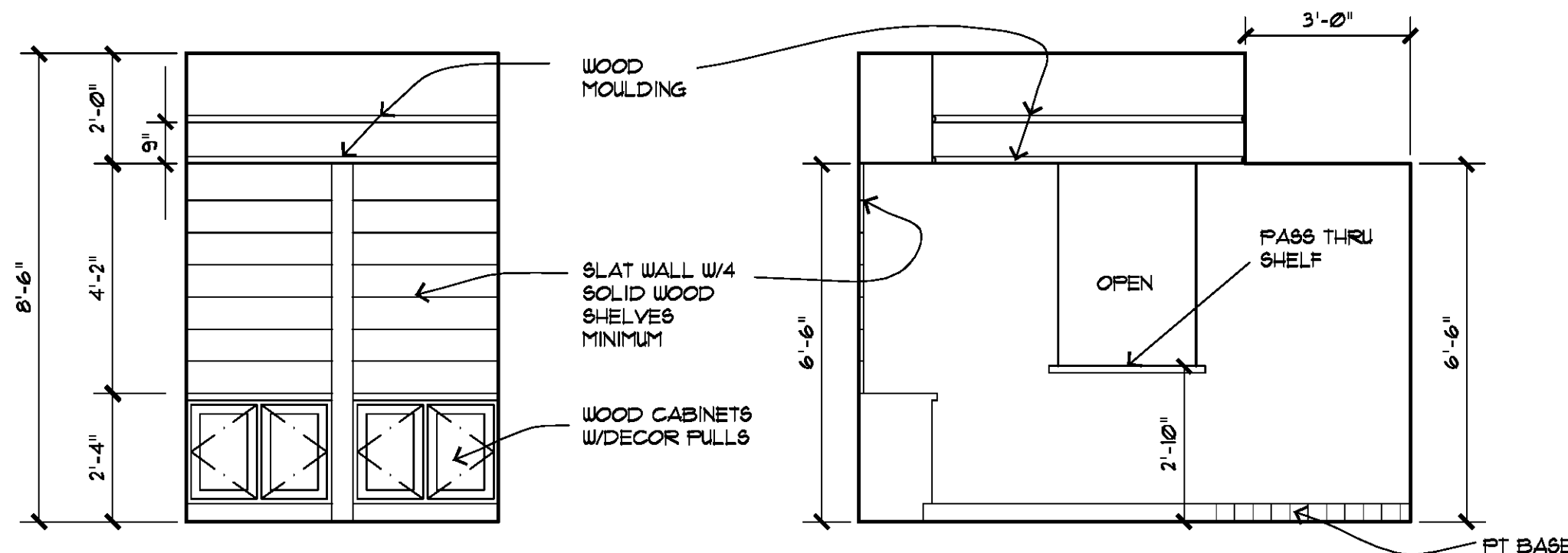
**6 BUSINESS CENTER**  
3/4"=1'-0"



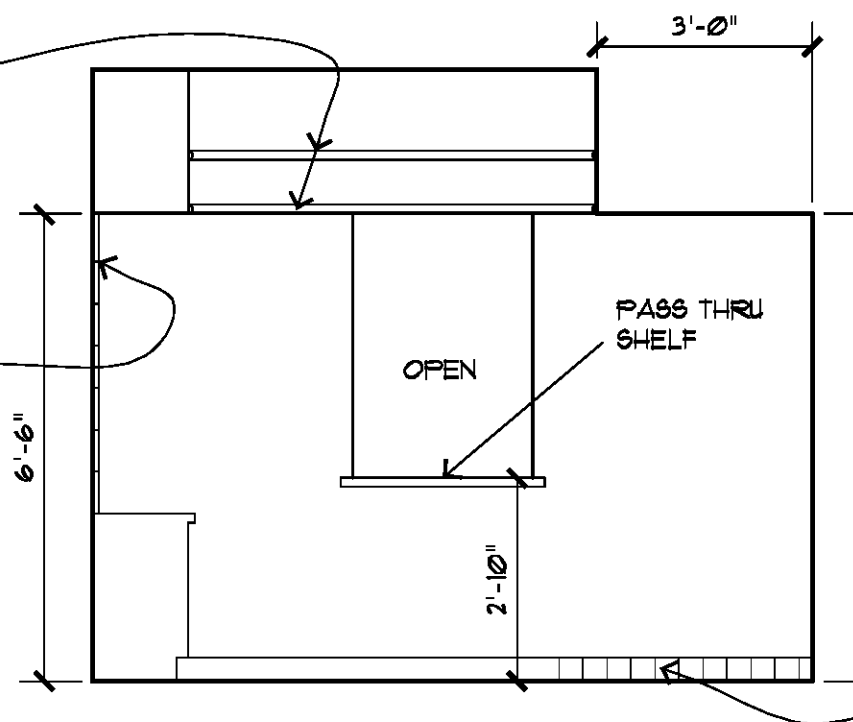
**7 BUSINESS CENTER**  
3/4"=1'-0"



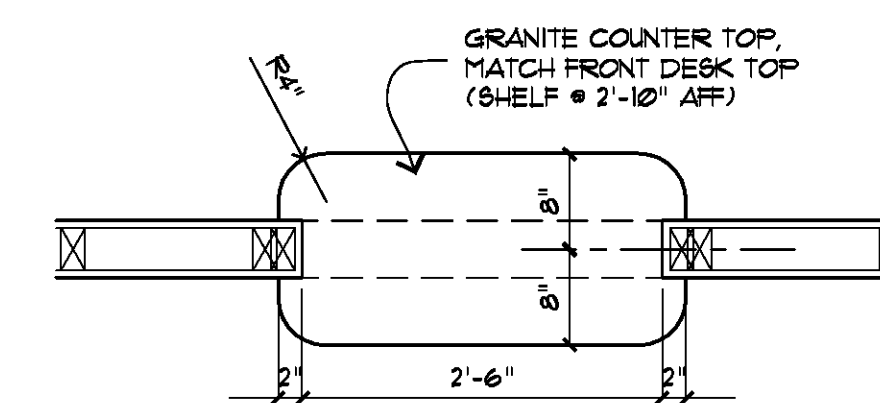
**8 DISPLAY RAIL @ MEETING ROOM**  
3"=1'-0"



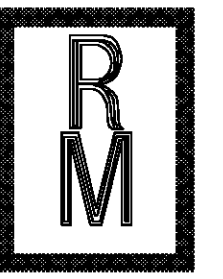
**9 SUITE SHOP**  
3/8"=1'-0"



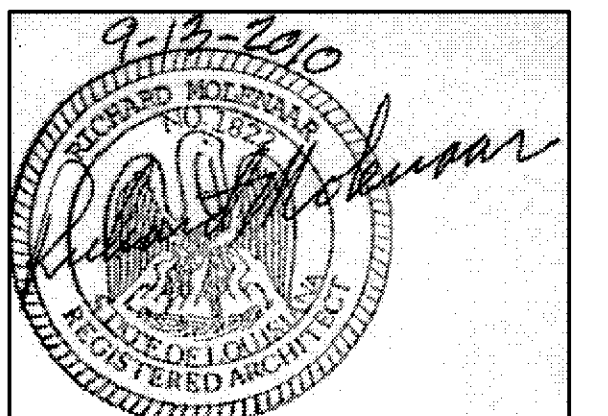
**10 SUITE SHOP**  
3/8"=1'-0"



**13 PASS THRU SHELF**  
3/4"=1'-0"



Richard Molenaar  
ARCHITECT



PROJECT NAME:  
**Hampton Inn**  
Main Street  
West Monroe, Louisiana

SHEET TITLE:  
**Interior Elevations/ Details**

PROJECT NO. 09017  
DATE: 09/13/10  
LATEST REVISION:   
DRAWN BY: CHECKED BY: SHEET NUMBER:

**A606**