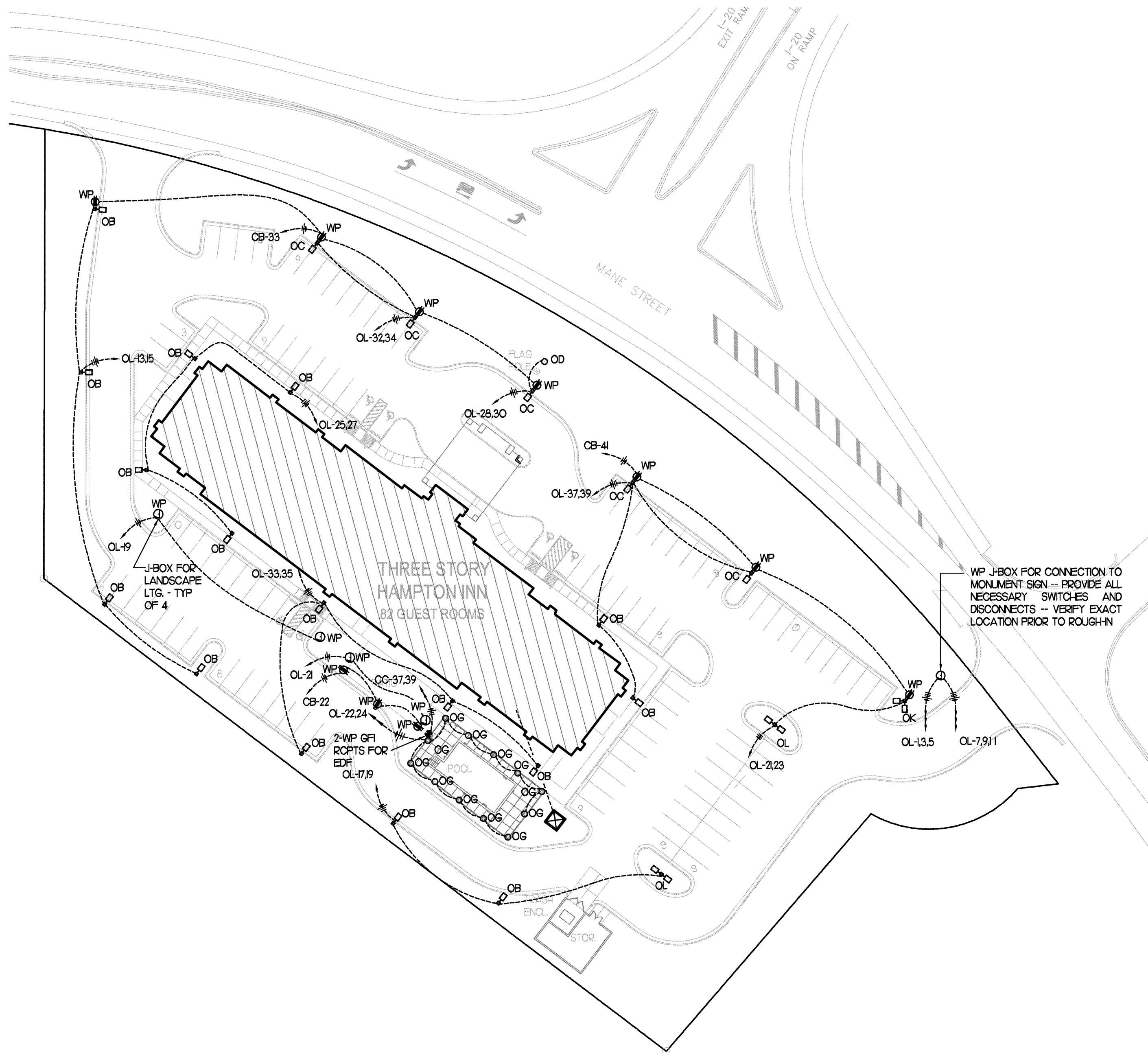
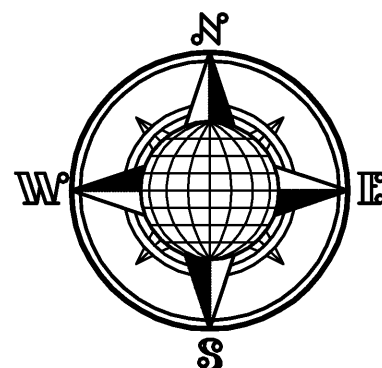


Richard Molenaar

ARCHITECT



ELECTRICAL SITE PLAN  
SCALE: 1" = 40'-0"



**ELECTRICAL SITE PLAN NOTES:**

**TELEPHONE SERVICE**

COORDINATE THE LOCATION OF ALL TELEPHONE SERVICE CONDUITS WITH THE LOCAL TELEPHONE COMPANY. PROVIDE SIZE AND QUANTITIES OF CONDUITS AS REQUIRED. PROVIDE CONDUITS FROM THE PBX ROOM TO A POINT AT THE PROPERTY LINE WITH CONDUITS STUBBED-UP AS DIRECTED BY THE LOCAL TELEPHONE COMPANY.

**CATV SERVICE**

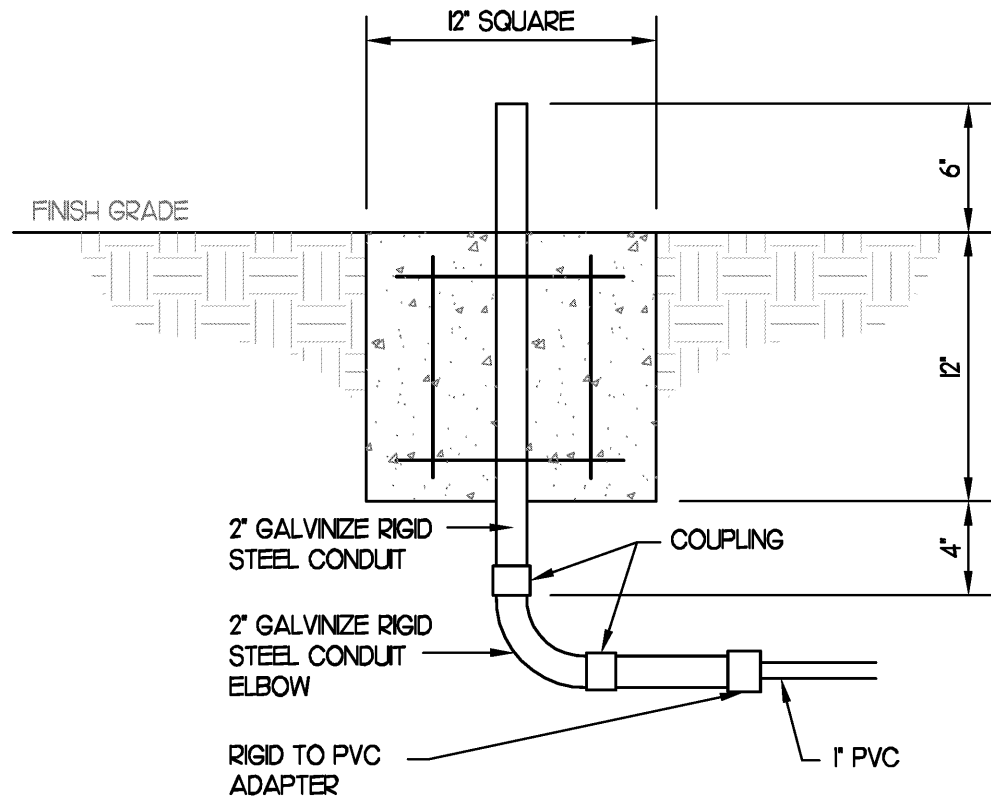
COORDINATE THE LOCATION OF ALL CATV SERVICE CONDUITS WITH THE LOCAL CABLE TELEVISION COMPANY. PROVIDE SIZE AND QUANTITIES OF CONDUITS AS REQUIRED. PROVIDE CONDUITS FROM THE PBX ROOM TO A POINT AT THE PROPERTY LINE WITH CONDUITS STUBBED-UP AS DIRECTED BY THE LOCAL CABLE TELEVISION COMPANY.

**ELECTRICAL SERVICE**

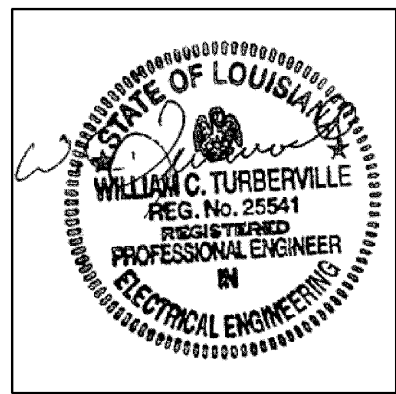
- SERVICE VOLTAGE TO THIS PROJECT SHALL BE 120/208V, 3-PHASE, 4-WIRE, 60 HZ.
- THE ROUTING OF THE UNDERGROUND ELECTRIC PRIMARY SERVICE ENTRANCE SHALL BE AS DETERMINED BY THE LOCAL POWER COMPANY. PROVIDE NECESSARY UNDERGROUND CONDUITS CONSISTING OF THE SIZE AND QUANTITIES AS REQUIRED BY THE LOCAL POWER COMPANY.
- THE LOCATION OF THE PAD MOUNTED TRANSFORMER IS SHOWN ON THE ELECTRICAL SITE PLAN, HOWEVER THE PRECISE LOCATION SHALL BE COORDINATED WITH THE LOCAL POWER COMPANY.
- ARRANGE WITH THE LOCAL POWER COMPANY FOR BOTH TEMPORARY AND PERMANENT POWER TO THIS PROJECT. CONSULT WITH THE LOCAL POWER COMPANY REPRESENTATIVES TO INSURE THAT ADEQUATE POWER OF THE DESIRED VOLTAGE AND PHASE CHARACTERISTICS IS AVAILABLE. ASSIST THE OWNER IN OBTAINING THE NECESSARY SERVICE AGREEMENTS.
- ALL SERVICE REQUIREMENTS SHALL BE CAREFULLY INVESTIGATED BY AND COORDINATED BY THE ELECTRICAL CONTRACTOR. PROVIDE ALL REQUIRED FACILITIES INCLUDING, BUT NOT LIMITED TO, TRENCHING AND BACKFILL, CONDUIT, PULL WIRES AND/OR ROPES & STRINGS, CABLE, CONNECTIONS, AND METERING PROVISIONS AND REQUIREMENTS.
- DO NOT BEGIN ANY WORK IN CONNECTION WITH THE MAIN SERVICE PRIOR TO RECEIVING AN ENGINEERING DRAWING FROM THE POWER COMPANY SHOWING THE REQUIRED FACILITIES.

**GENERAL ELECTRICAL SITE PLAN NOTES**

- ALL WORK SHALL CONFORM TO ALL LOCAL, STATE AND NATIONAL ELECTRICAL CODES, INCLUDING THE 2005 EDITION OF THE N.E.C. AND 1994 ADA GUIDELINES.
- ELECTRICAL CONTRACTOR SHALL BE RESPONSIBLE FOR OBTAINING AND PURCHASING ALL NECESSARY LICENSES, PERMITS, AND INSPECTIONS, AS WELL AS ANY OTHER FEES REGARDING THE ELECTRICAL INSTALLATION.
- CONNECT ALL P.V. VALVES TO THE FIRE ALARM SYSTEM - VERIFY LOCATION OF ALL P.V. VALVES WITH THE SPRINKLER CONTRACTOR.
- PAD MOUNTED TRANSFORMER BY LOCAL POWER COMPANY. PAD AS DIRECTED BY THE LOCAL POWER COMPANY.
- ALL WIRING SHOWN ON THIS SITE PLAN SHALL BE A MINIMUM OF #10 THIN / THIN COPPER IN A MINIMUM 3/4" C, UNLESS NOTED OTHERWISE.
- PROVIDE ALL NECESSARY DISCONNECT AND SWITCHES FOR ALL SIGNS - COORDINATE ALL SIGN CONNECTIONS WITH SIGN CONTRACTOR.
- SEE SHEET "1302" FOR POLE BASE DETAIL.
- UNDERWATER POOL LIGHTS BY POOL CONTRACTOR.



CONCRETE BASE FOR  
FIXTURES "OD" & "OE"  
NO SCALE



PROJECT NAME:

**Hampton Inn**  
Main Street  
West Monroe, Louisiana

SHEET TITLE:

**ELECTRICAL SITE PLAN**

Scale: 1" = 30' - 0"

PROJECT NO.

09017

LATEST REVISION:

DRAWN BY:

SMJ

CHECKED BY:

SMJ

SHEET NUMBER:

DATE:

09/13/10

**E101**